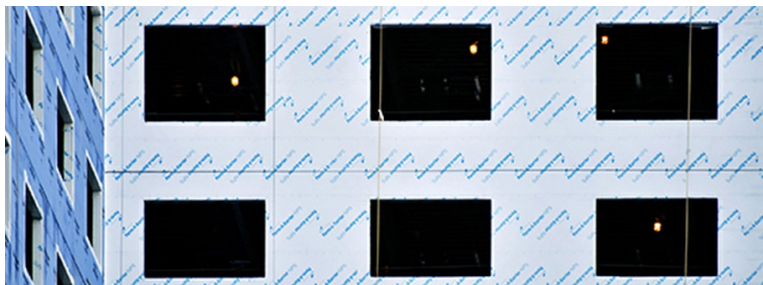


PERM-A-BARRIER® VPL LT Technical Letters

TL NUMBER	TITLE
TL-0002	Substrate Preparation for Application of PERM-A-BARRIER® Products to Glass-Mat Faced Gypsum Sheathing
TL-0012	Impact of Substrate Roughness and Coating Thickness on Fluid Applied Air Barrier Performance
TL-0013	Adhesion Compatibility of PERM-A-BARRIER® VPL/VPL LT with Sealants and Caulks
TL-0014	Substrate Preparation for PERM-A-BARRIER® VPL, VPL LT and VPO Applications
TL-0015	Disposal of PERM-A-BARRIER® VPL/VPL LT Waste and Used Containers
TL-0016	Penetrations Through PERM-A-BARRIER® Systems
TL-0017	Proof of Air Barrier Assembly Testing Performance ASTM E 2357 Testing
TL-0018	Use of GCP Applied Technologies PERM-A-BARRIER® Systems with Stucco
TL-0019	Exposure Guidelines for PERM-A-BARRIER® Self-Adhered Membranes



gcpat.com | North America Customer Service: 1 877-4AD-MIX1 (1 877-423-6491)

This document is only current as of the last updated date stated below and is valid only for use in the United States. It is important that you always refer to the currently available information at the URL below to provide the most current product information at the time of use. Additional literature such as Contractor Manuals, Technical Bulletins, Detail Drawings and detailing recommendations and other relevant documents are also available on www.gcpat.com. Information found on other websites must not be relied upon, as they may not be up-to-date or applicable to the conditions in your location and we do not accept any responsibility for their content. If there are any conflicts or if you need more information, please contact GCP Customer Service.

Last Updated: 2018-08-24

gcpat.com/solutions/products/perm-a-barrier-air-barrier-system/perm-a-barrier-vpl-lt-technical-letters