

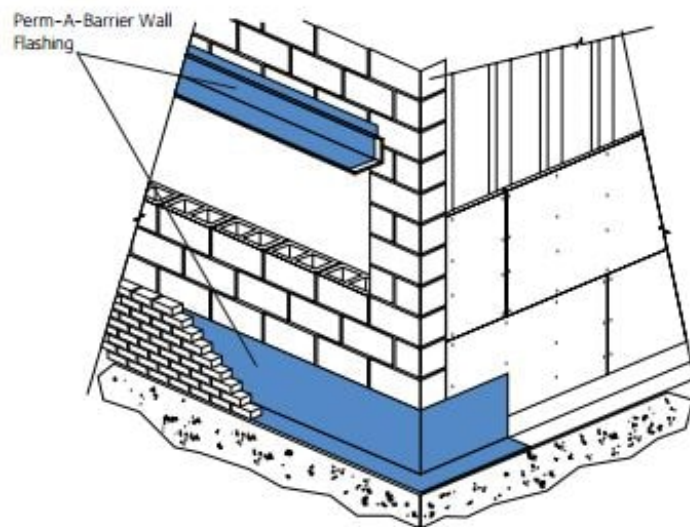
PERM-A-BARRIER[®] Wall Flashing (US Version)

Self-adhesive, rubberized asphalt/polyethylene through-wall flashing for cavity wall applications

Product Description

PERM-A-BARRIER[®] wall membranes are ideal for protecting the building superstructure from the damaging effects of the elements. By minimizing air and water vapor flow through the building exterior, PERM-A-BARRIER[®] wall membranes:

- Prevent premature deterioration of the building envelope
- Enhance thermal performance of the structure and save energy costs
- Improve comfort for the building occupant



Product Advantages

- **Fully bonded**—continuous adhesion to the substrate resists wind loads and prevents water tracking behind the tape
- **Waterproof and impermeable to moisture**—impermeable to the passage of liquid water and water vapor
- **Cross laminated film**—provides dimensional stability, high tear strength, puncture and impact resistance
- **Cold applied**—no flame hazard; self-adhesive overlaps ensure continuity
- **Flexible**—accommodates minor settlement and shrinkage movement
- **Controlled thickness**—factory made sheet ensures constant, non-variable site application
- **Aggressive, conformable adhesive**—creates 100% watertight laps and allows self-sealing around mechanical fasteners

- **Unique green color and logo**—highly differentiated on the job site from other flashing types and enables easy identification of damage
- **RIPCORD® Split Release on Demand**—faster application in the straight-aways, ease of membrane positioning in detailed areas
- **Foldless release paper**—fewer edge catches, 180° pull-back, ease of membrane cutting (single cuts) and membrane positioning, quicker one-man installs

System Components

- **PERM-A-BARRIER® Wall Flashing**— 40 mil (1 mm) total thickness self-adhesive, cold applied tape consisting of 32 mils (0.8 mm) of rubberized asphalt integrally bonded to a 8 mil (0.2 mm) high density, cross laminated polyethylene film. The rolls are interwound with disposable silicone-coated release sheet
- **PERM-A-BARRIER® Primer Plus**— water-based vapor permeable primer used to facilitate tenacious adhesion of PERM-A-BARRIER® self-adhered membranes to the substrate
- **PERM-A-BARRIER® WB Primer**— high tack, water-based primer for use with PERM-A-BARRIER® Wall Flashing on cementitious and exterior gypsum wallboards
- **BITUTHENE® Primer B2 LVC**— low VOC solvent-based primer for green concrete or damp surfaces
- **S100 Sealant**— one part neutral curing, ultra low modulus silicone sealant for sealing penetrations, terminations, brick ties and final terminations.
- **BITUTHENE® Mastic Trowel Grade**— rubberized asphalt mastic for sealing patches, terminations, brick ties, etc.
- **BITUTHENE® Liquid Membrane**— two component, trowel grade, asphalt modified urethane for sealing patches, terminations, brick ties, etc.

Installation

Safety

PERM-A-BARRIER® products must be handled properly. Vapors from the mastic and solvent-based primer are harmful and flammable. For these products, the best available information on safe handling, storage, personal protection, health and environmental considerations has been gathered. Refer to product label and SDS (Safety Data Sheet) before use. All users should acquaint themselves with this information prior to working with the material. Carefully read detailed precaution statements on the product labels and SDS before use. SDS can be obtained from our web site at gcpat.com or by contacting us toll free at 866-333-3SBM (3726).

Preparatory Work

Apply PERM-A-BARRIER® Wall Flashing and accessories only in fair weather when air and surface temperatures are above 25 °F (-4 °C).

Wherever wall flashing is to be applied, the surface must be smooth, clean, dry and free of voids, spalled areas, loose substrate, loose nails, sharp protrusions or other matter that will hinder the adhesion or uniformity of the wall flashing installation. Clean loose dust or dirt from the surface by wiping with a clean dry cloth or a brush.

Conditioning and Priming

Apply PERM-A-BARRIER®Primer Plus by air spray, brush or roller or apply PERM-A-BARRIER®WB Primer by brush or roller. Allow the primer to dry completely before application of the flashing. Drying times may vary depending upon temperature and humidity conditions. Refer to PERM-A-BARRIER®Primer Plus and PERM-A-BARRIER®WB Primer product data sheet for installation recommendations and Technical Letter 2, Substrate Preparation for Application of PERM-A-BARRIER®Products to Glass-Mat Faced Gypsum Sheathing for priming requirements on specific glass-mat faced sheathing products.

Flashing Application

Pre-cut PERM-A-BARRIER®Wall Flashing to easily handled lengths. Peel release paper from roll to expose rubberized asphalt and carefully position flashing against substrate. RIPCORDER®, a Split Release on Demand feature embedded in the membrane, also makes PERM-A-BARRIER®Wall Flashing easy to position in detailed areas. Press firmly into place with a steel hand roller or the back of a utility knife as soon as possible, fully adhering the flashing to the substrate to prevent water from migrating under the PERM-A-BARRIER®Wall Flashing. Form end dams at horizontal flashing terminations to prevent water entry. Overlap adjacent pieces 2 in. (51 mm) and roll overlap with a steel hand roller. Apply a bead of S100 Sealant along all laps, seams, top edges, cuts, penetrations and trowel into place.

When applying PERM-A-BARRIER®Wall Flashing to PERM-A-BARRIER®Liquid, VP, VP LT or VPO, apply a bead of S100 or BITUTHENE®Liquid Membrane along all laps, seams, top edges, cuts, penetrations and as shown in GCP detail drawings, and trowel into place. If PERM-A-BARRIER®Liquid is more than 7 days old, priming may be necessary. Refer to Technical Letter 11 for more information. Lay or trim edges of PERM-A-BARRIER®Wall Flashing 1/2 in. (13 mm) back from the face of the masonry. No reglet is necessary when installing PERM-A-BARRIER®Wall Flashing to vertical surfaces. Complete installation instructions and details are available upon request.

If wrinkles develop, carefully cut out affected area and replace in similar procedure outlined above. The repair piece must be pressed into place with a hand roller as soon as possible to ensure continuous and intimate contact with the substrate.

All non water shedding edges must be sealed with S100 Sealant, BITUTHENE®Liquid Membrane or BITUTHENE®Mastic.

Protection—PERM-A-BARRIER®Wall Flashing must be protected from damage from other trades or construction materials.

Storage and Handling Information

All materials must be protected from rain and physical damage. Pallets of PERM-A-BARRIER®Aluminum Flashing must not be double stacked on the job site. Provide cover on top and all sides, allowing for adequate ventilation. Store membrane where temperatures will not exceed 90 °F (32 °C) for extended periods. All products must be stored in a dry area away from high heat, flames or sparks. Store only as much material at point of use as is required for each day's work.

Supply

	UNIT OF SALE	APPROXIMATE COVERAGE	WEIGHT	PALLETIZATION
PERM-A-BARRIER® Wall Flashing				
12 in. (305 mm)	3 rolls	75 linear ft per roll	22.5 lbs/roll	25 cartons (75 rolls) per pallet
18 in. (457 mm)	2 rolls	75 linear ft per roll	33.7 lbs/roll	pallet
24 in. (610 mm)	1 roll	75 linear ft per roll	49.7 lbs/roll	25 cartons (50 rolls) per pallet
36 in. (914 mm)	1 roll	75 linear ft per roll	67.7 lbs/roll	pallet
				35 cartons (35 rolls) per pallet
				25 cartons (25 rolls) per pallet
BITUTHENE® Mastic—5 gal pail				
	1 pail	approx. 120 ft ² at 60 mils	54 lbs/pail	36 pails per pallet
BITUTHENE® Mastic—30 oz tube				
	12 tubes	approx. 30 linear ft x 1/4 in. bead	32 lbs/carton	72 cartons (864 tubes) per pallet
S100 Sealant—29 oz. Cartridge				
	1 cartridge	approx. 30 linear ft x 1/4 in. bead	29 oz. cartridge	10 cartridges/ carton 42 cartons/ pallet
BITUTHENE® Liquid Membrane—1.5 gal pail				
	1 pail	approx. 200 Linear ft/gal @ 1" wide x 90 mils.	16 lbs/pail	100 pails per pallet
BITUTHENE® Liquid Membrane—4 gal pail				
	1 pail	approx. 200 Linear ft/gal @ 1" wide x 90 mils.	44 lbs/pai	24 pails per pallet
PERM-A-BARRIER® Primer Plus—5 gal pail				
	1 pail	450–500 ft ² /gal (11–12 m ² /L)	43 lbs/pail	36 pails per pallet
PERM-A-BARRIER® WB Primer—5 gal pail				
	1 pail	250–350 ft ² /gal (6–8 m ² /L)	45 lbs/pail	32 pails per pallet

Physical Properties

	TYPICAL VALUE	TEST METHOD
Color	Green with repeated logo imprint	
Thickness	40 mil (1 mm)	ASTM D3767, method A
Low temperature flexibility	Unaffected at -45 °F (-43 °C)	ASTM D1970
Tensile strength, membrane	1200 psi (8300 kPa) minimum	ASTM D412, Die C modified
Elongation, ultimate failure of rubberized asphalt	200% minimum	ASTM D412
Lap adhesion at minimum application temperature	60 lbs/ft (875 N/m) width	ASTM D1876 modified

Adhesion to concrete at minimum application temperature	60 lbs/ft (875 N/m) width	ASTM D903
Puncture resistance, membrane	40 lbs (178 N) minimum MD	ASTM D781
	80 lbs (356 N) minimum MD	ASTM E154
Tear resistance, initiation	13 lbs (58 N) minimum MD	ASTM D1004
Tear resistance, propagation	9 lbs (40 N) minimum MD	ASTM D1938
Permeance	0.05 perms (2.9 ng/m ² sPa) maximum	ASTM E96, method B
Water absorption	0.1% maximum	ASTM D570

Limitations

PERM-A-BARRIER®Wall Flashing must not be applied in areas where it will be exposed to sunlight permanently and must be covered within a reasonable amount of time, not to exceed 60 days. Refer to Technical Letter 19, *Exposure Guidelines for PERM-A-BARRIER®Self-Adhered Membranes*.

PERM-A-BARRIER®Wall Flashing and all other PERM-A-BARRIER®self-adhered membranes should not be applied over S100 Sealant.

Warranty

PERM-A-BARRIER®products are warranted to be free of defects in manufacture for a period of 5 years. Material will be provided at no charge to replace any defective product.

Technical Service

Support is provided by full-time technically trained GCP field sales representatives and technical service personnel, backed by a central research and development technical services staff.

gcpat.com | North America customer service: 1-866-333-3726

We hope the information here will be helpful. It is based on data and knowledge considered to be true and accurate and is offered for consideration, investigation and verification by the user, but we do not warrant the results to be obtained. Please read all statements, recommendations and suggestions in conjunction with our conditions of sale, which apply to all goods supplied by us. No statement, recommendation or suggestion is intended for any use that would infringe any patent, copyright or other third-party right.

PERM-A-BARRIER, BITUTHENE, and RIPCORDER are trademarks, which may be registered in the United States and/or other countries, of GCP Applied Technologies, Inc. This trademark list has been compiled using available published information as of the publication date and may not accurately reflect current trademark ownership or status.

© Copyright 2018 GCP Applied Technologies, Inc. All rights reserved.

GCP Applied Technologies Inc., 62 Whittemore Avenue, Cambridge, MA 02140, USA

GCP Canada, Inc., 294 Clements Road, West, Ajax, Ontario, Canada L1S 3C6

This document is only current as of the last updated date stated below and is valid only for use in the United States. It is important that you always refer to the currently available information at the URL below to provide the most current product information at the time of use. Additional literature such as Contractor Manuals, Technical Bulletins, Detail Drawings and detailing recommendations and other relevant documents are also available on www.gcpat.com. Information found on other websites must not be relied upon, as they may not be up-to-date or applicable to the conditions in your location and we do not accept any responsibility for their content. If there are any conflicts or if you need more information, please contact GCP Customer Service.

Last Updated: 2019-03-30

gcpat.com/solutions/products/perm-a-barrier-air-barrier-system/perm-a-barrier-wall-flashing