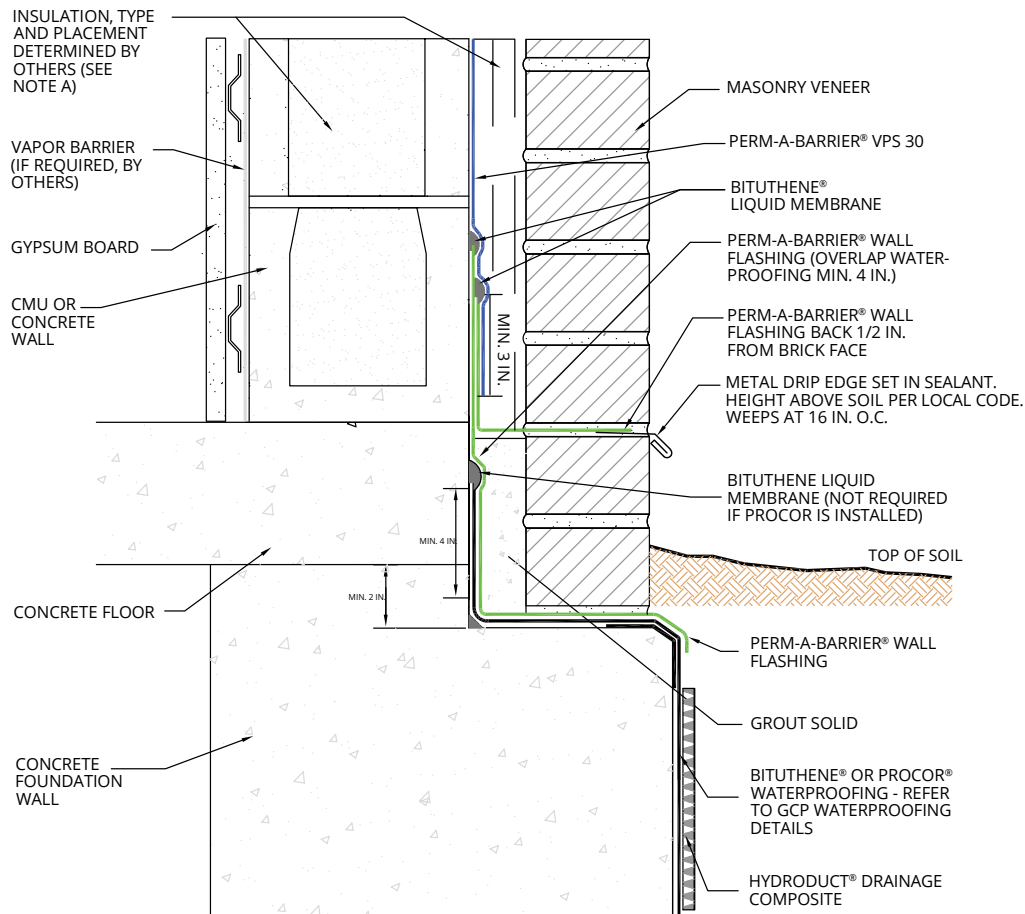


# SEAMLESS TIE-INS WITH UNSURPASSED TECHNICAL SUPPORT

## Air & Vapor Barrier to Below-Grade Waterproofing:



### Important Notes:

- A. Detail not suitable for all climates. Avoiding excessive moisture accumulation in exterior walls is dependent on many factors including proper placement of insulation and air and vapor barriers in the wall. For assistance with exterior wall design, consult with a building science professional or a GCP representative.
- B. To ensure a continuous air barrier across the building envelope, a fully continuous connection should be made to the roof system and GCP waterproofing system.
- C. Ensure window system is properly aligned with wall insulation and installed per the window manufacturer's recommendations to ensure continuity of the air barrier system.
- D. Install all Grace products in accordance with Grace Product Data Sheets and GCP recommendations.

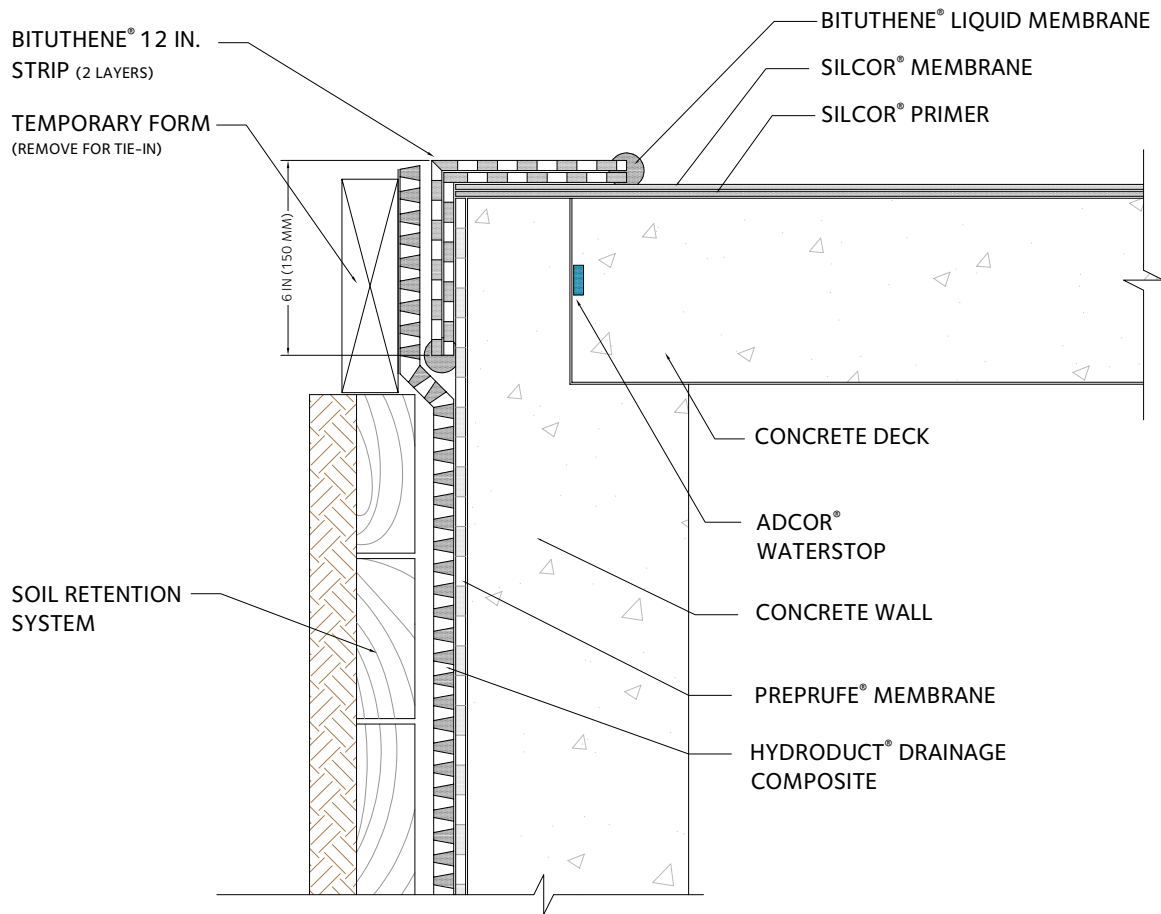
Build with peace of mind, knowing that we have a comprehensive library of technical details to support virtually all tie-in scenarios. Trust one partner to simplify the process, enhance efficiencies and deliver superior performance.

Need something custom? Our expert Technical Services team will work hand-in-hand to draw the needed detail and application plan to ensure your project has the maximum protection.

**Contact your Territory Manager for more information on 6Sides+ and build your project with confidence.**

# SEAMLESS TIE-INS WITH UNSURPASSED TECHNICAL SUPPORT

## Horizontal Deck to Below-Grade:



NOTE - GCP MAY REQUIRE AN ALTERNATE GCP WATERSTOP BASED ON DESIGN CONDITIONS

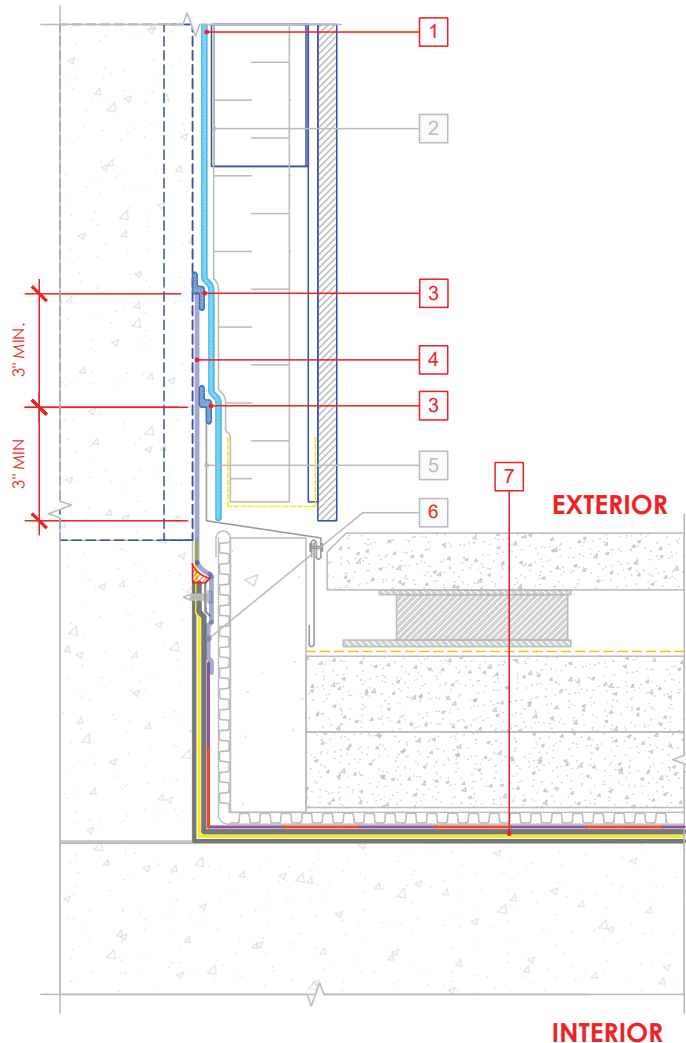
Build with peace of mind, knowing that we have a comprehensive library of technical details to support virtually all tie-in scenarios. Trust one partner to simplify the process, enhance efficiencies and deliver superior performance.

Need something custom? Our expert Technical Services team will work hand-in-hand to draw the needed detail and application plan to ensure your project has the maximum protection.

**Contact your Territory Manager for more information on 6Sides+ and build your project with confidence.**

# SEAMLESS TIE-INS WITH UNSURPASSED TECHNICAL SUPPORT

## Wall to Horizontal Deck:



### LEGEND

1. PERM-A-BARRIER® ULTRA MEMBRANE
2. CLADDING ATTACHMENT, CONFIRM DETAILING REQUIREMENTS WITH THE GCP REPRESENTATIVE
3. PERM-A-BARRIER® UNIVERSAL FLASHING & SEALANT, 1-INCH TROWELED BEAD
4. PERM-A-BARRIER® SELF-ADHERED FLASHING\*
5. SHEET METAL FLASHING PER ARCH
6. TRANSITION TO PERM-A-BARRIER HRA
7. PERM-A-BARRIER HRA SYSTEM

### NOTE

- CONSULT GCP FOR HORIZONTAL WATERPROOFING COMPATIBILITY AND CONNECTION
- SEE PERM-A-BARRIER® HRA SYSTEM DETAIL PAB-HRA-012 (INSIDE CORNER TRANSITION)

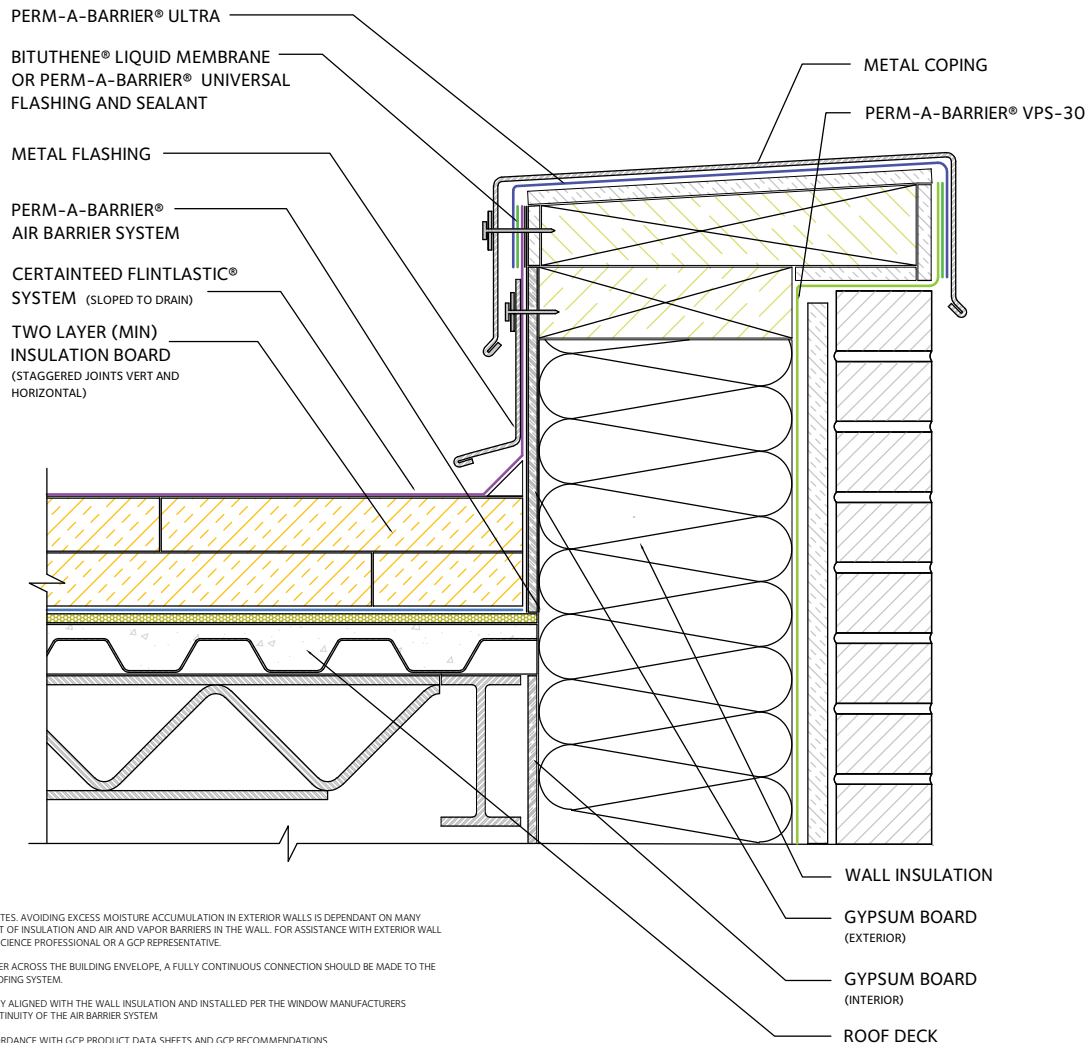
Build with peace of mind, knowing that we have a comprehensive library of technical details to support virtually all tie-in scenarios. Trust one partner to simplify the process, enhance efficiencies and deliver superior performance.

Need something custom? Our expert Technical Services team will work hand-in-hand to draw the needed detail and application plan to ensure your project has the maximum protection.

**Contact your Territory Manager for more information on 6Sides+ and build your project with confidence.**

# SEAMLESS TIE-INS WITH UNSURPASSED TECHNICAL SUPPORT

## Roof to Wall:



NOTE -

- A. DETAIL NOT SUITABLE FOR ALL CLIMATES. AVOIDING EXCESS MOISTURE ACCUMULATION IN EXTERIOR WALLS IS DEPENDANT ON MANY FACTORS, INCLUDING THE PLACEMENT OF INSULATION AND AIR AND VAPOR BARRIERS IN THE WALL. FOR ASSISTANCE WITH EXTERIOR WALL DESIGN, CONSULT WITH A BUILDING SCIENCE PROFESSIONAL OR A GCP REPRESENTATIVE.
- B. TO ENSURE A CONTINUOUS AIR BARRIER ACROSS THE BUILDING ENVELOPE, A FULLY CONTINUOUS CONNECTION SHOULD BE MADE TO THE ROOF SYSTEM AND GCP WATERPROOFING SYSTEM.
- C. ENSURE WINDOW SYSTEM IS PROPERLY ALIGNED WITH THE WALL INSULATION AND INSTALLED PER THE WINDOW MANUFACTURERS RECOMMENDATIONS TO ENSURE CONTINUITY OF THE AIR BARRIER SYSTEM.
- D. INSTALL ALL GCP PRODUCTS IN ACCORDANCE WITH GCP PRODUCT DATA SHEETS AND GCP RECOMMENDATIONS.

Build with peace of mind, knowing that we have a comprehensive library of technical details to support virtually all tie-in scenarios. Trust one partner to simplify the process, enhance efficiencies and deliver superior performance.

Need something custom? Our expert Technical Services team will work hand-in-hand to draw the needed detail and application plan to ensure your project has the maximum protection.

**Contact your Territory Manager for more information on 6Sides+ and build your project with confidence.**