

SWELLPRUFE™

A Safer, Faster, High-Performing
Bentonite Membrane

STOP TRYING TO WATERPROOF WITH MUD IN A RUG.

Dual Layer Protection

Proprietary hybrid design combines rubberized asphalt and encapsulated bentonite in a simple-to-install rolled membrane.

WHY CHOOSE SWELLPRUFE™

Fast & Easy Installation:

Easy to handle and cut, and features a kick-out roll design that speeds up application and reduces labor fatigue; laps can be hot-welded or mechanically fastened.

Walkable Surface—Even When Wet:

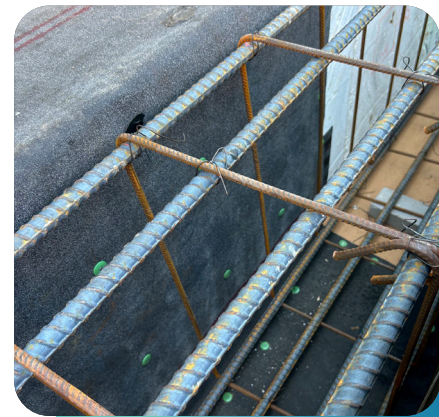
Stable, non-slip surface that's trafficable in wet conditions, minimizing delays and improving jobsite safety.

Increased Coverage per Roll:

110 square feet—nearly double that of traditional bentonite solutions.

IDEAL APPLICATIONS:

- Commercial Building Foundations
- Basements
- Blind Side Walls
- Post-applied Below-grade Walls



Ideal for Pre-Applied Applications



Suitable for Post-Applied Foundations

Next Gen Waterproofing

Customer Centric solutions from the global leader in below-grade waterproofing and building envelope.

HOW SWELLPRUFE™ WORKS

Superior Bond to Concrete:

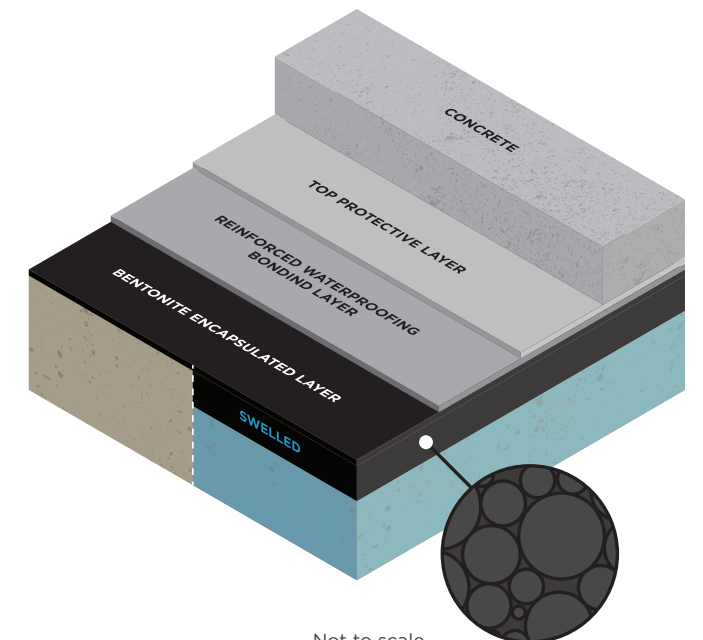
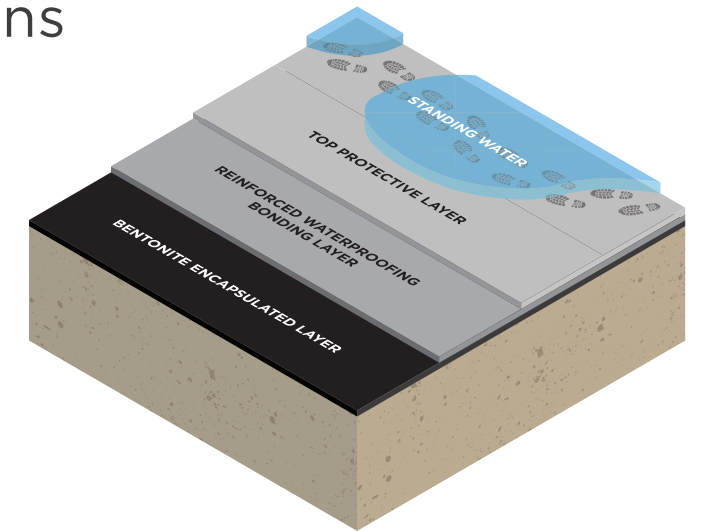
Fully adheres to poured concrete, preventing lateral water migration and ensuring long-term protection under slabs and blind-side walls.

Seals Through Hydration:

Specially designed overlaps seal through hydration, allowing quick mechanical fastening while protecting against water intrusion.

Controlled Swelling:

Engineered with a delayed swelling mechanism that activates only when needed—restricting water ingress at the source.



Not to scale. Shown for technology explanation only.

SWELLPRUFE™

Proudly part of 6Sides+

**More than Product.
More than Partners.
Piece of Mind.**

Imagine entrusting every facet of your building's envelope to one dedicated partner. From premium materials, compatible tie-ins and an expert technical service team, this streamlined approach not only simplifies the process but also enhances project efficiency and delivered performance.

From **Single Source Warranties**, to **Compatible Tie-Ins** along with **360 Degree Support**, Saint-Gobain is dedicated to improving how commercial and infrastructure projects are built.

To learn more about **SWELLPRUFE™** and how 6Sides+ could elevate your construction project, contact your local GCP Territory Manager.