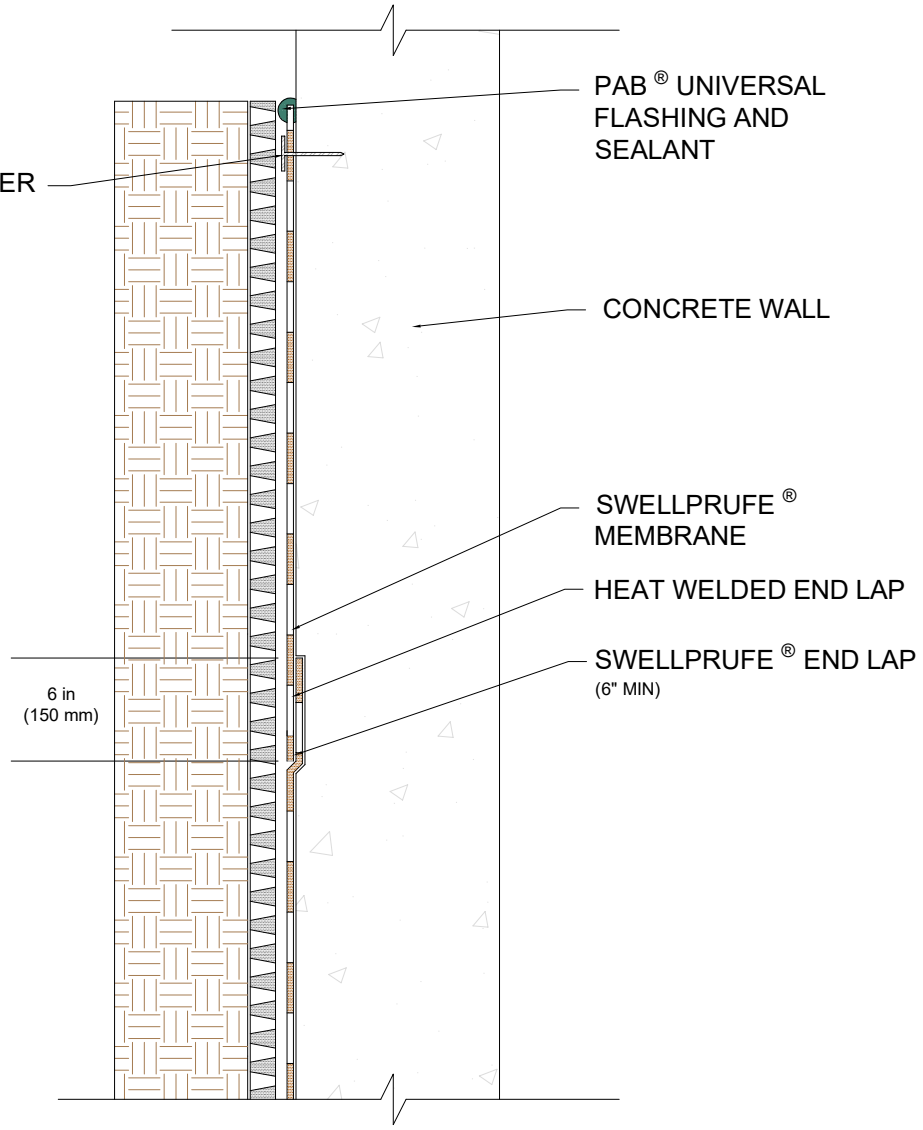


MECHANICAL FASTENER  
(12" MIN SPACING)



NOTES:

- SWELLPRUFE<sup>®</sup> STRIP SHOULD BE PROTECTED DURING BACKFILL PLACEMENT AND COMPACTION
- FOLD SWELLPRUFE<sup>®</sup> STRIP BACK ONTO COMPACTED EARTH/GRAVEL FOR TIE-IN WITH SWELLPRUFE<sup>®</sup> MEMBRANE UNDERSLAB
- PROTECTION COURSE/DRAINAGE & BACKFILL NOT SHOWN FOR CLARITY
- DETAIL ALSO APPLICABLE TO TIE SWELLPRUFE<sup>®</sup> INTO PREVIOUSLY INSTALLED (ADHERED) SWELLPRUFE<sup>®</sup>
- GCP MAY REQUIRE AN ALTERNATE GCP WATERSTOP BASED ON DESIGN CONDITIONS
- REBAR OMITTED FOR CLARITY
- GCP MAY APPROVE AN ALTERNATE INJECTABLE GCP WATERSTOP BASED ON DESIGN CONDITIONS



# VERTICAL APPLICATION - POST APPLIED HEAT WELDED LAP

SWELLPRUFE<sup>®</sup> WATERPROOFING SYSTEM

DRAWING: SWL-PRF-123A
SCALE: NOT TO SCALE
EFFECTIVE DATE: 09/05/2025
SUPERCEDES: N/A