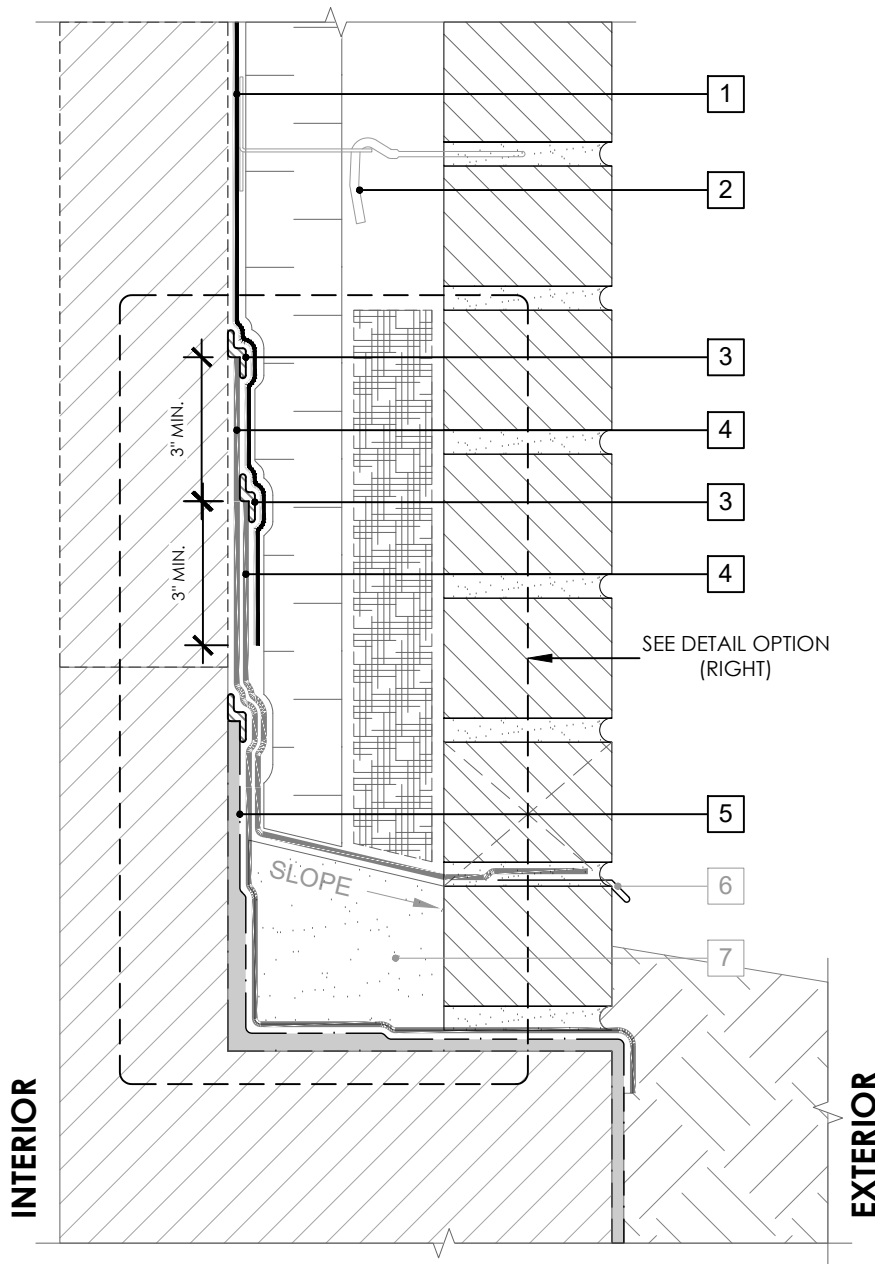


OPTION 1

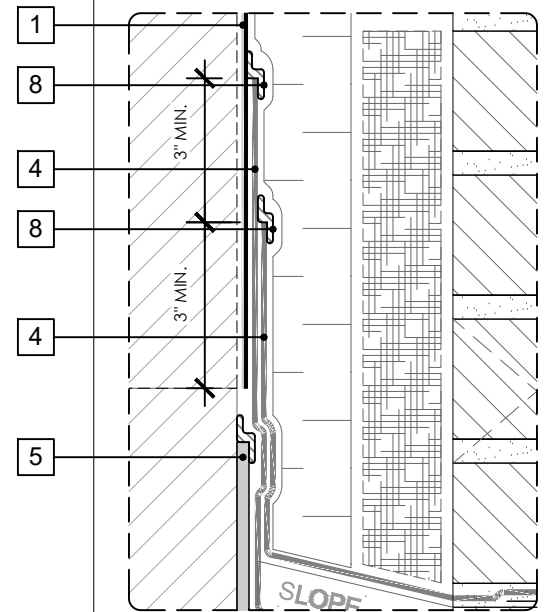


SEE PWM-004 (3D-1) FOR 3D DETAIL

LEGEND

1. PERM-A-BARRIER® WALL MEMBRANE
2. MASONRY ANCHOR DETAILING (SEE DRAWING PWM-006)
3. BITUTHENE MASTIC, BITUTHENE LIQUID MEMBRANE, OR GCP APPROVED SEALANT - 1-INCH TROWELED BEAD
4. PERM-A-BARRIER® WALL FLASHING - PRIME SUBSTRATE WHERE REQUIRED
5. BELOW GRADE WATERPROOFING SYSTEM - SEE GCPAT.COM
6. SHEET METAL FLASHING PER ARCH
7. GROUT SOLID TO HEIGHT OF CURB - SLOPE TOP
8. PERM-A-BARRIER® S100, PERM-A-BARRIER® LIQUID FLASHING, BITUTHENE MASTIC, OR BITUTHENE LIQUID MEMBRANE - 1-INCH TROWELED BEAD

OPTION 2



SEE PWM-004 (3D-2) FOR 3D DETAIL

GENERAL NOTES

1. Detail not suitable for all climates. Avoiding excessive moisture accumulation in exterior walls is dependent on many factors including proper placement of insulation and water, air, and vapor control layers in the wall. Confirm membranes are suitable for project specific service temperatures. For assistance with exterior wall design, consult with a building science professional.
2. Install all GCP products in accordance with GCP Product Data Sheets and GCP recommendations.
3. GCP products are indicated in the detail legend in **BOLDFACE** font. Detail components by others are indicated in GRAY FONT. Install components per manufacturer and project specific requirements.

Refer to air barrier system product data sheet for acceptable SELF-ADHERED FLASHING products.



BASE OF WALL DETAIL - MASONRY CLADDING

PERM-A-BARRIER® WALL
MEMBRANE

DRAWING:	PWM-004
SCALE:	3" = 1'
EFFECTIVE DATE:	2020.05.21
SUPERCEDES:	NEW