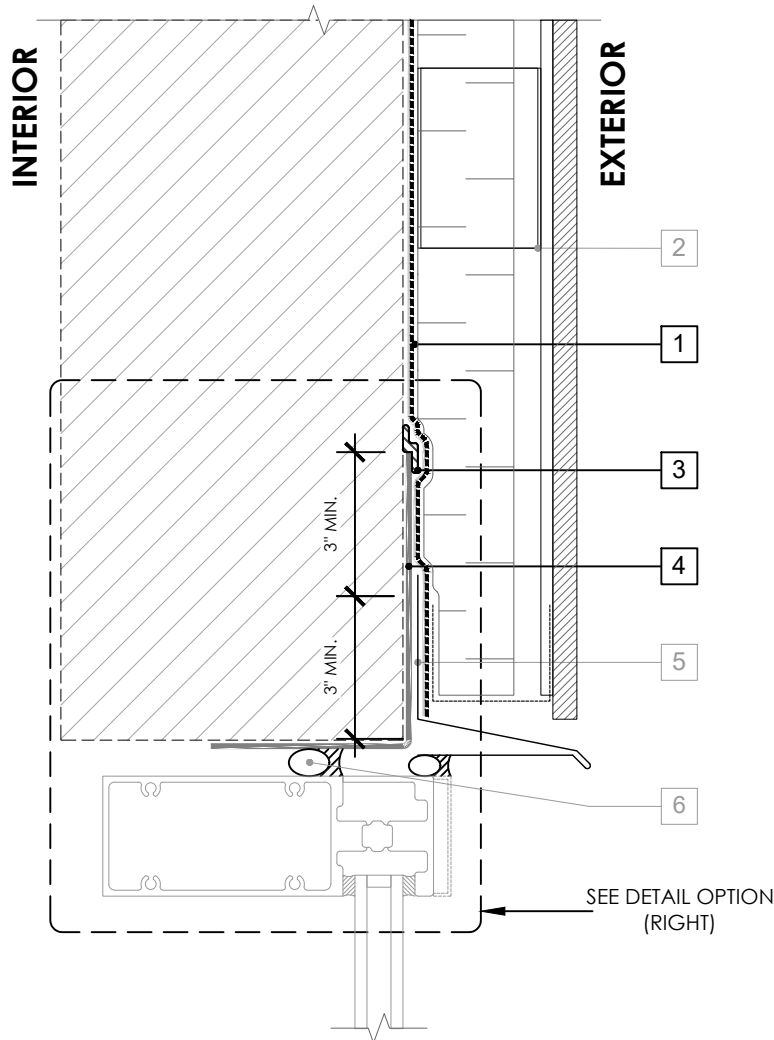


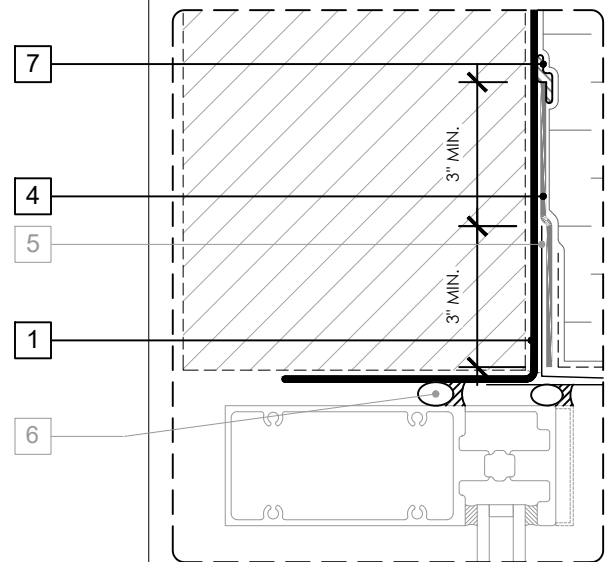
# OPTION 1



## LEGEND

1. **PERM-A-BARRIER® WALL MEMBRANE**
2. CLADDING ATTACHMENT -  
CONFIRM DETAILING REQUIREMENTS  
WITH THE GCPAT REPRESENTATIVE
3. **BITUTHENE MASTIC, BITUTHENE  
LIQUID MEMBRANE, OR GCP  
APPROVED SEALANT - 1-INCH  
TROWELED BEAD**
4. **PERM-A-BARRIER® SELF-ADHERED  
FLASHING\***
5. SHEET METAL FLASHING PER ARCH
6. INTERIOR AIR SEALANT OVER  
BACKER ROD
7. **PERM-A-BARRIER® S100,  
PERM-A-BARRIER® LIQUID FLASHING,  
BITUTHENE MASTIC, OR BITUTHENE  
LIQUID MEMBRANE - 1-INCH  
TROWELED BEAD**

## OPTION 2



## GENERAL NOTES

1. Detail not suitable for all climates. Avoiding excessive moisture accumulation in exterior walls is dependent on many factors including proper placement of insulation and water, air, and vapor control layers in the wall. Confirm membranes are suitable for project specific service temperatures. For assistance with exterior wall design, consult with a building science professional.
2. Install all GCP products in accordance with GCP Product Data Sheets and GCP recommendations.
3. GCP products are indicated in the detail legend in **BOLDFACE** font. Detail components by others are indicated in GRAY FONT. Install components per manufacturer and project specific requirements.

\*Refer to air barrier system product data sheet for acceptable SELF-ADHERED FLASHING\* products.



### CURTAINWALL HEAD DETAIL

### PERM-A-BARRIER® WALL MEMBRANE

DRAWING:	PWM-021
SCALE:	3" = 1'
EFFECTIVE DATE:	2020.05.21
SUPERCEDES:	NEW