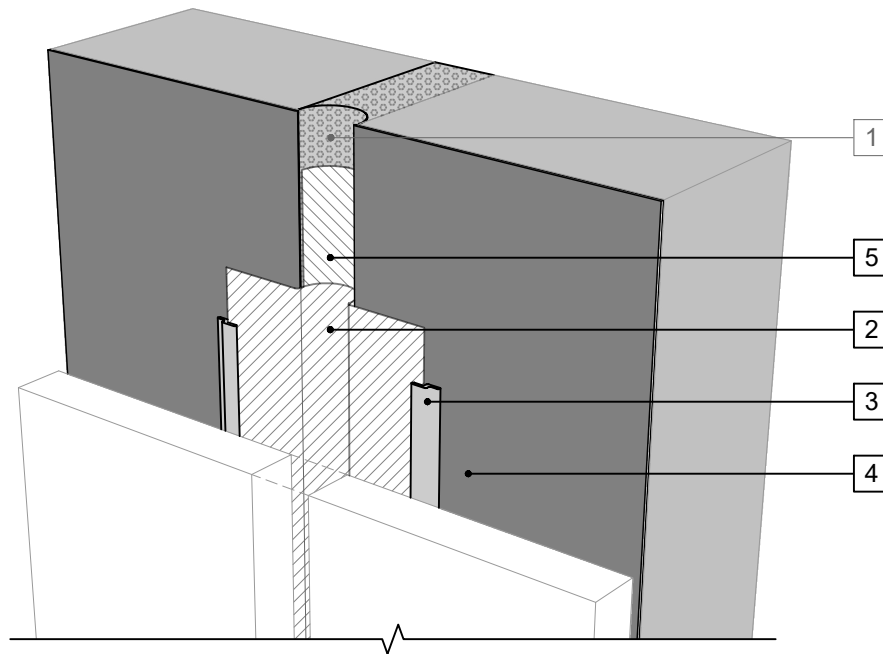


## LEGEND

1. COMPRESSIBLE JOINT FILLER - MAXIMUM 4-INCH WIDE JOINT CAPABLE OF A MAXIMUM 50% MOVEMENT IN COMPRESSION AND ELONGATION
2. PERM-A-BARRIER® SELF-ADHERED FLASHING\* - PRIME SUBSTRATE WHERE REQUIRED
3. PERM-A-BARRIER® S100 SEALANT - 1-INCH WIDE TROWELED BEAD
4. PERM-A-BARRIER® LIQUID
5. PERM-A-BARRIER® SELF-ADHERED FLASHING\* - INVERTED STRIP



## NOTE

- WIDTH OF THE INVERTED STRIP SHALL BE TWICE THE WIDTH OF THE EXPANSION JOINT TO ACCOMMODATE MOVEMENT - ALL SEAMS, OVERLAPS, JOINTS, AND EDGES SEALED WITH S100
- MAXIMUM 4 INCH WIDE JOINT CAPABLE OF A MAXIMUM 50% MOVEMENT IN COMPRESSION AND ELONGATION
- CLADDING AND CLOSURE BY OTHERS NOT SHOWN FOR CLARITY

## PERSPECTIVE VIEW

## GENERAL NOTES

1. Detail not suitable for all climates. Avoiding excessive moisture accumulation in exterior walls is dependent on many factors including proper placement of insulation and water, air, and vapor control layers in the wall. Confirm membranes are suitable for project specific service temperatures. For assistance with exterior wall design, consult with a building science professional.
2. Install all GCP products in accordance with GCP Product Data Sheets and GCP recommendations.
3. GCP products are indicated in the detail legend in **BOLDFACE** font. Detail components by others are indicated in GRAY FONT. Install components per manufacturer and project specific requirements.

\*Refer to air barrier system product data sheet for acceptable self-adhered flashing products.



## EXPANSION JOINT DETAIL - MASONRY CLADDING

PERM-A-BARRIER® LIQUID  
AIR BARRIER SYSTEM

DRAWING: PLQ-008

SCALE: 3" = 1'

EFFECTIVE DATE: 2020.05.21

SUPERCEDES: NEW