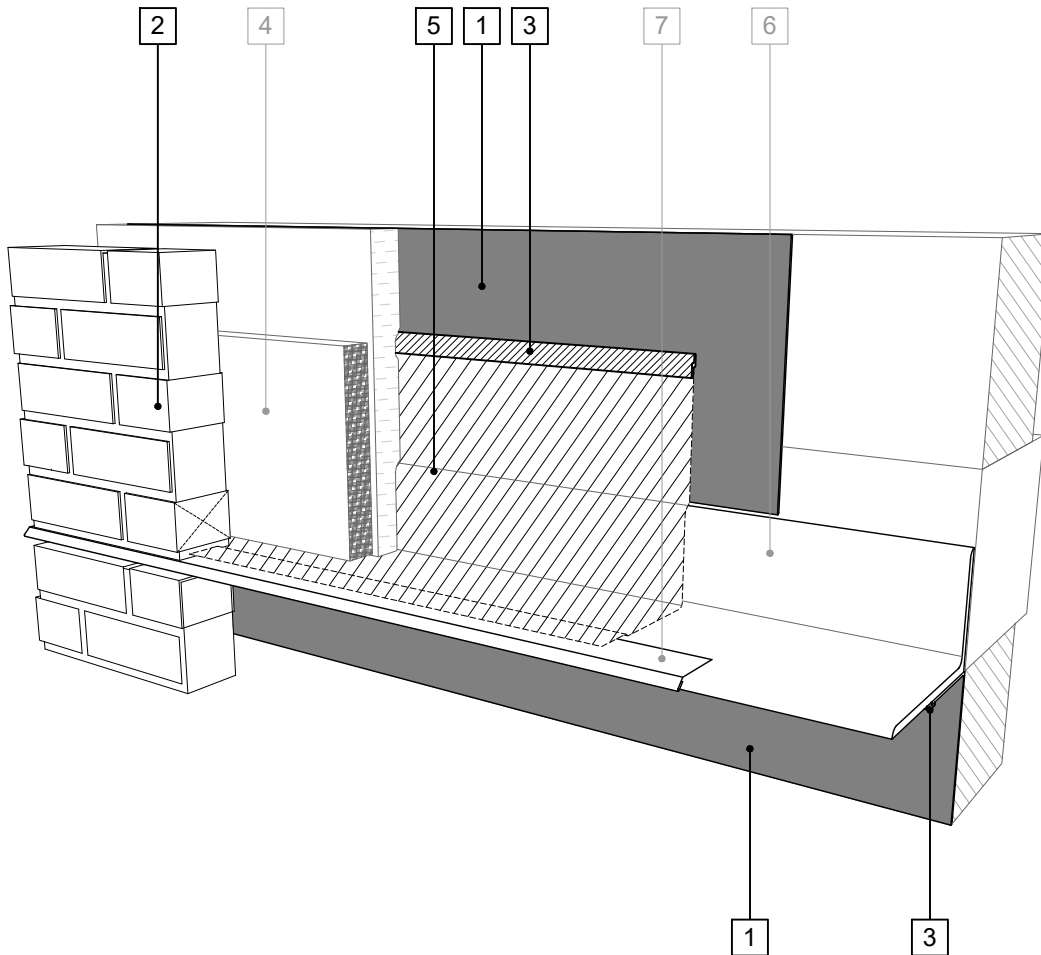


## LEGEND

1. **PERM-A-BARRIER® NPS MEMBRANE**
2. **MASONRY ANCHOR DETAILING (SEE DRAWING NPS-006)**
3. **PERM-A-BARRIER® S100, PERM-A-BARRIER® LIQUID FLASHING, BITUTHENE MASTIC, OR BITUTHENE LIQUID MEMBRANE - 1-INCH TROWELED BEAD**
4. MORTAR COLLECTION MESH
5. **PERM-A-BARRIER® WALL FLASHING, PRIME SUBSTRATE WHERE REQUIRED**
6. CONTINUOUS SHELF ANGLE SUPPORT PER STRUCTURAL
7. SHEET METAL FLASHING PER ARCH



SEE NPS-005 (OPTION 2) FOR 2D DETAIL

## GENERAL NOTES

1. Detail not suitable for all climates. Avoiding excessive moisture accumulation in exterior walls is dependent on many factors including proper placement of insulation and water, air, and vapor control layers in the wall. Confirm membranes are suitable for project specific service temperatures. For assistance with exterior wall design, consult with a building science professional.
2. Install all GCP products in accordance with GCP Product Data Sheets and GCP recommendations.
3. GCP products are indicated in the detail legend in **BOLDFACE** font. Detail components by others are indicated in GRAY FONT. Install components per manufacturer and project specific requirements.

\*Refer to air barrier system product data sheet for acceptable SELF-ADHERED FLASHING\* products.



### FLOOR LINE FLASHING SEQUENCE (OPT. 2) - MASONRY CLADDING

PERM-A-BARRIER® NPS  
MEMBRANE

DRAWING: NPS-005 (3D-2)

SCALE: 3" = 1'

EFFECTIVE DATE: 2020.05.21

SUPERCEDES: NEW