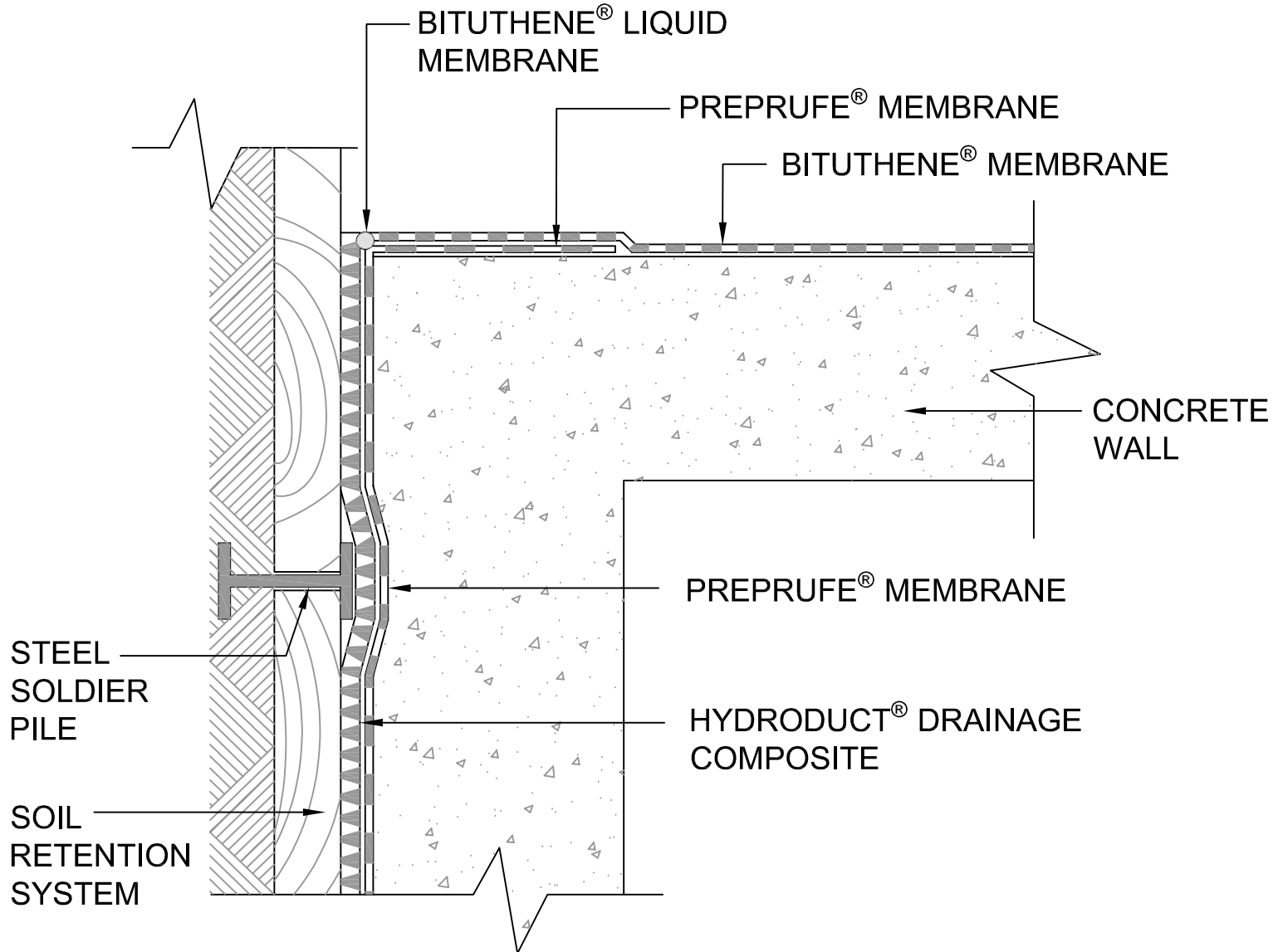


PLAN VIEW



NOTE: HYDRODUCT OR APPROVED PROTECTION COURSE AT BITUTHENE WALL NOT SHOWN FOR CLARITY



Tie into BITUTHENE® Wall  
Waterproofing - Plan View  
**PREPRUFE® WATERPROOFING SYSTEM**

DRAWING: PRE 045

SCALE: Not to scale

EFFECTIVE DATE: 03/23/2020

SUPERCEDES: 07/01/2016

# Tie into Bituthene<sup>®</sup> Wall Waterproofing

Prior to Membrane Installation, Review the Preprufe<sup>®</sup> Data Sheet



## Surface Prep

All surfaces must be sound and solid to eliminate movement during the concrete pour. Substrate must be regular and smooth with no gaps or voids greater than 0.5 in (15 mm). The surface should also be free from loose aggregate and sharp protrusions as outlined in the Preprufe<sup>®</sup> Data Sheet section on Surface Preparation.

## Detailing

1. Install Preprufe 160R over the prepared vertical surface.
2. Extend the Preprufe 160R Membrane 6 in (150 mm) beyond the end of the blind-side wall.
3. As the foundation wall formwork is installed, fold the 12 in (300 mm) piece of Preprufe 160R Membrane to form a sharp corner.
4. Secure it to the inside face of the exterior form panel using Hydroduct Tape or small head fasteners located close to the outer edge of the membrane.
5. Once the wall is poured and cured for seven days, remove the formwork and install the post applied waterproofing according to the manufacturers' standard installation procedures.
6. Apply Hydroduct<sup>®</sup> according to Hydroduct Data Sheet.

## Special Notes

Preprufe membranes should not be used in areas where they will be permanently exposed to sunlight, weather or traffic. Protect membrane from sunlight as quickly as possible after installation.

Provide temporary protection for Preprufe at the tie-in location until the Bituthene tie-in is installed. The tie-in should be completed and backfilled as soon as possible.