

LIST OF DRAWINGS

LEGEND

WINDOW DETAILS AT MASONRY CLADDING

PWM-001	WINDOW HEAD DETAIL	MASONRY CLADDING
PWM-002	WINDOW JAMB DETAIL	MASONRY CLADDING
PWM-003	WINDOW SILL DETAIL	MASONRY CLADDING
PWM-003 (3D-1)	WINDOW FLASHING SEQUENCE	SHEET-APPLIED FLASHING
PWM-003 (3D-2)	SHEET-APPLIED FLASHING PRESTRIP	

BASE OF WALL DETAILS AT MASONRY CLADDING

PWM-004	BASE-OF-WALL DETAIL	MASONRY CLADDING
PWM-004 (3D-1)	BASE-OF-WALL FLASHING SEQ. (OPT. 1)	MASONRY CLADDING
PWM-004 (3D-2)	BASE-OF-WALL FLASHING SEQ. (OPT. 2)	MASONRY CLADDING
PWM-004 (ALT 1)	BASE-OF-WALL DETAIL (ALTERNATE 1)	MASONRY CLADDING
PWM-004 (ALT 2)	BASE-OF-WALL DETAIL (ALTERNATE 2)	MASONRY CLADDING

LEDGER DETAILS AT MASONRY CLADDING

PWM-005	FLOOR LINE DETAIL	MASONRY CLADDING
PWM-005 (3D-1)	FLOOR LINE FLASHING SEQ. (OPT. 1)	MASONRY CLADDING
PWM-005 (3D-2)	FLOOR LINE FLASHING SEQ. (OPT. 2)	MASONRY CLADDING
PWM-006A	MASONRY ANCHOR DETAIL	CMU SUBSTRATE
PWM-006B	MASONRY ANCHOR DETAIL	FRAMED SUBSTRATE

PARAPET DETAILS AT MASONRY CLADDING

PWM-007	PARAPET DETAIL	MASONRY CLADDING
---------	----------------	------------------

EXPANSION AND CONTROL JOINT DETAILS

PWM-008	EXPANSION JOINT DETAIL
PWM-009	CONTROL JOINT DETAIL

WINDOW DETAILS AT NON-MASONRY CLADDING

PWM-010	WINDOW HEAD DETAIL	NON-MASONRY CLADDING
PWM-011	WINDOW JAMB DETAIL	NON-MASONRY CLADDING
PWM-012	WINDOW SILL DETAIL	NON-MASONRY CLADDING

NON-MASONRY CLADDING DETAILS

PWM-013	FLOOR LINE DETAIL	NON-MASONRY CLADDING
PWM-014	CONCRETE STEM WALL DETAIL	NON-MASONRY CLADDING
PWM-015	BASE-OF-WALL DETAIL AT GRADE	NON-MASONRY CLADDING
PWM-016	BASE-OF-WALL DETAIL	NON-MASONRY CLADDING
PWM-017	INSIDE CORNER DETAIL	NON-MASONRY CLADDING
PWM-017 (ALT)	INSIDE CORNER DETAIL (ALTERNATE)	NON-MASONRY CLADDING
PWM-018	OUTSIDE CORNER DETAIL	NON-MASONRY CLADDING
PWM-018 (ALT)	OUTSIDE CORNER DETAIL (ALTERNATE)	NON-MASONRY CLADDING
PWM-019	KNIFEPLATE PENETRATION DETAIL	NON-MASONRY CLADDING
PWM-020	PENETRATION DETAILS	NON-MASONRY CLADDING

CURTAINWALL DETAILS AT NON-MASONRY CLADDING

PWM-021	CURTAINWALL HEAD DETAIL	NON-MASONRY CLADDING
PWM-022	CURTAINWALL JAMB DETAIL	NON-MASONRY CLADDING
PWM-023	CURTAINWALL SILL DETAIL	NON-MASONRY CLADDING

DEFLECTION JOINT

PWM-024	DEFLECTION JOINT	NON-MASONRY CLADDING
---------	------------------	----------------------

GENERAL NOTES

- Detail not suitable for all climates. Avoiding excessive moisture accumulation in exterior walls is dependent on many factors including proper placement of insulation and water, air, and vapor control layers in the wall. Confirm membranes are suitable for project specific service temperatures. For assistance with exterior wall design, consult with a building science professional.
- Install all GCP products in accordance with GCP Product Data Sheets and GCP recommendations.
- GCP products are indicated in the detail legend in **BOLDFACE** font. Detail components by others are indicated in GRAY FONT. Install components per manufacturer and project specific requirements.

Refer to air barrier system product data sheet for acceptable SELF-ADHERED FLASHING products.

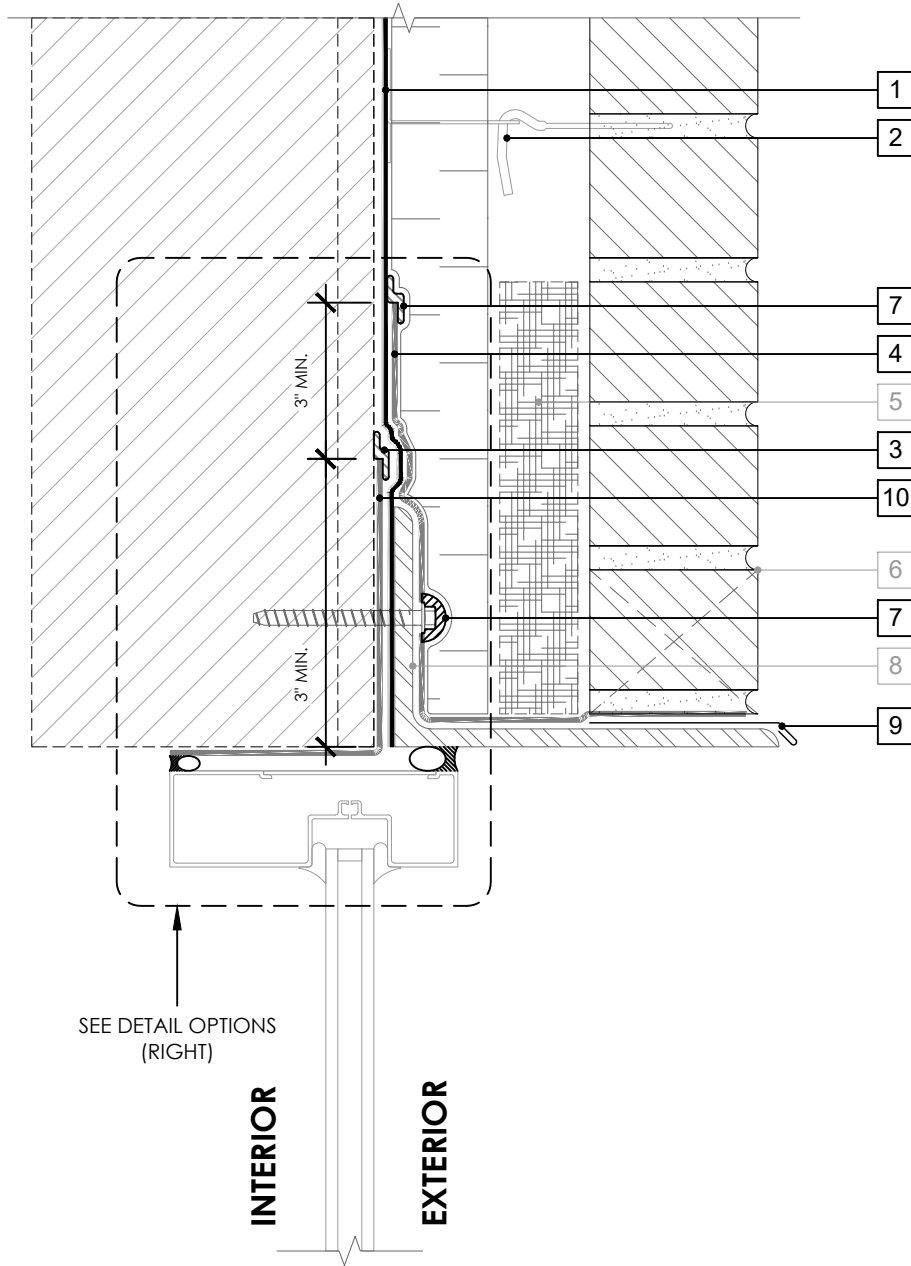


LIST OF DRAWINGS

PERM-A-BARRIER® WALL MEMBRANE

DRAWING:	PWM-000
SCALE:	3" = 1'
EFFECTIVE DATE:	2020.05.21
SUPERCEDES:	NEW

OPTION 1



SEE DETAIL OPTIONS
(RIGHT)

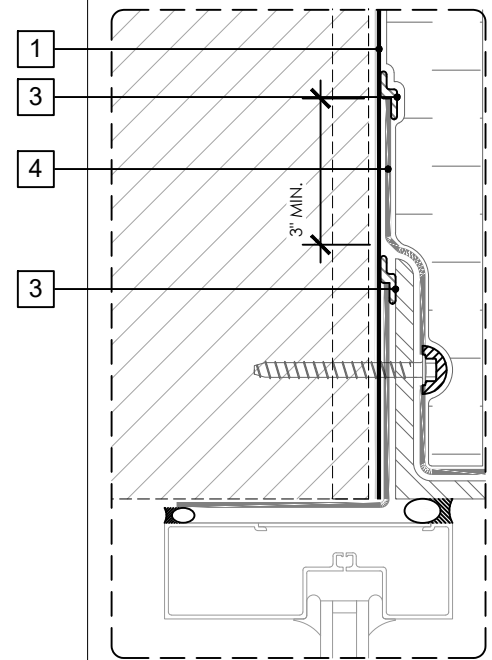
INTERIOR

EXTERIOR

LEGEND

1. PERM-A-BARRIER® WALL MEMBRANE
2. MASONRY ANCHOR DETAILING (SEE DRAWING PWM-006)
3. BITUTHENE MASTIC, BITUTHENE LIQUID MEMBRANE, OR GCP APPROVED SEALANT - 1-INCH TROWELED BEAD
4. PERM-A-BARRIER® WALL FLASHING (STAR CUT AT BOLT) - PRIME SUBSTRATE WHERE REQUIRED
5. MORTAR COLLECTION MESH
6. MASONRY WEEP/VENT
7. PERM-A-BARRIER® S100, PERM-A-BARRIER® LIQUID FLASHING, BITUTHENE MASTIC, OR BITUTHENE LIQUID MEMBRANE
8. CONTINUOUS SHELF ANGLE SUPPORT PER STRUCTURAL
9. SHEET METAL FLASHING PER ARCH
10. PERM-A-BARRIER® SELF-ADHERED FLASHING*

OPTION 2



GENERAL NOTES

1. Detail not suitable for all climates. Avoiding excessive moisture accumulation in exterior walls is dependent on many factors including proper placement of insulation and water, air, and vapor control layers in the wall. Confirm membranes are suitable for project specific service temperatures. For assistance with exterior wall design, consult with a building science professional.
2. Install all GCP products in accordance with GCP Product Data Sheets and GCP recommendations.
3. GCP products are indicated in the detail legend in **BOLDFACE** font. Detail components by others are indicated in GRAY FONT. Install components per manufacturer and project specific requirements.

Refer to air barrier system product data sheet for acceptable SELF-ADHERED FLASHING products.



WINDOW HEAD DETAIL - MASONRY CLADDING

PERM-A-BARRIER® WALL MEMBRANE

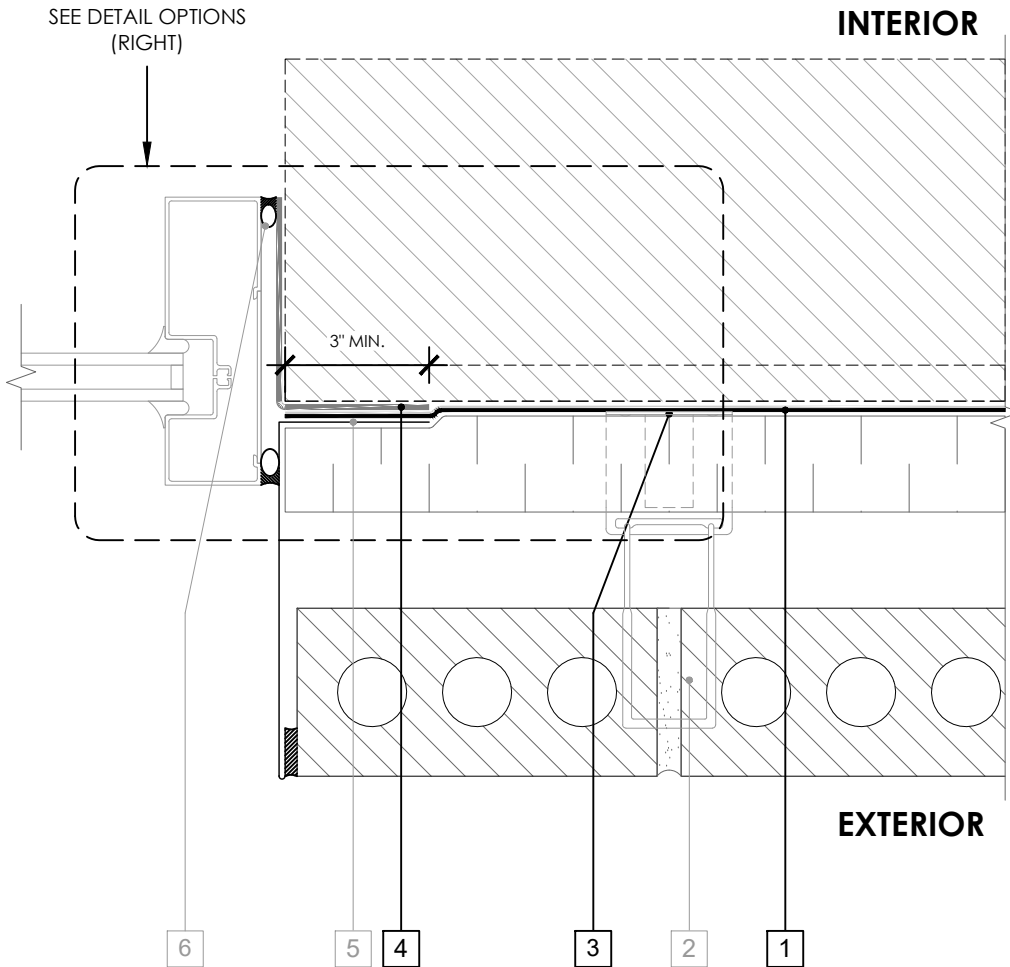
DRAWING: PWM-001

SCALE: 3" = 1'

EFFECTIVE DATE: 2020.05.21

SUPERCEDES: NEW

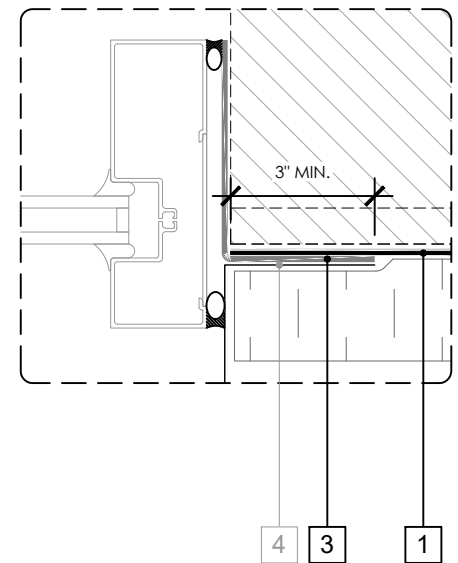
OPTION 1



LEGEND

1. PERM-A-BARRIER® WALL MEMBRANE
2. MASONRY ANCHOR DETAILING (SEE DRAWING PWM-006)
3. PERM-A-BARRIER® S100, PERM-A-BARRIER® LIQUID FLASHING, BITUTHENE MASTIC, OR BITUTHENE LIQUID MEMBRANE AROUND FASTENER IF REQUIRED
4. PERM-A-BARRIER® SELF-ADHERED FLASHING*
5. SHEET METAL FLASHING PER ARCH
6. INTERIOR AIR SEALANT OVER BACKER ROD

OPTION 2



GENERAL NOTES

1. Detail not suitable for all climates. Avoiding excessive moisture accumulation in exterior walls is dependent on many factors including proper placement of insulation and water, air, and vapor control layers in the wall. Confirm membranes are suitable for project specific service temperatures. For assistance with exterior wall design, consult with a building science professional.
2. Install all GCP products in accordance with GCP Product Data Sheets and GCP recommendations.
3. GCP products are indicated in the detail legend in **BOLDFACE** font. Detail components by others are indicated in GRAY FONT. Install components per manufacturer and project specific requirements.

Refer to air barrier system product data sheet for acceptable SELF-ADHERED FLASHING products.

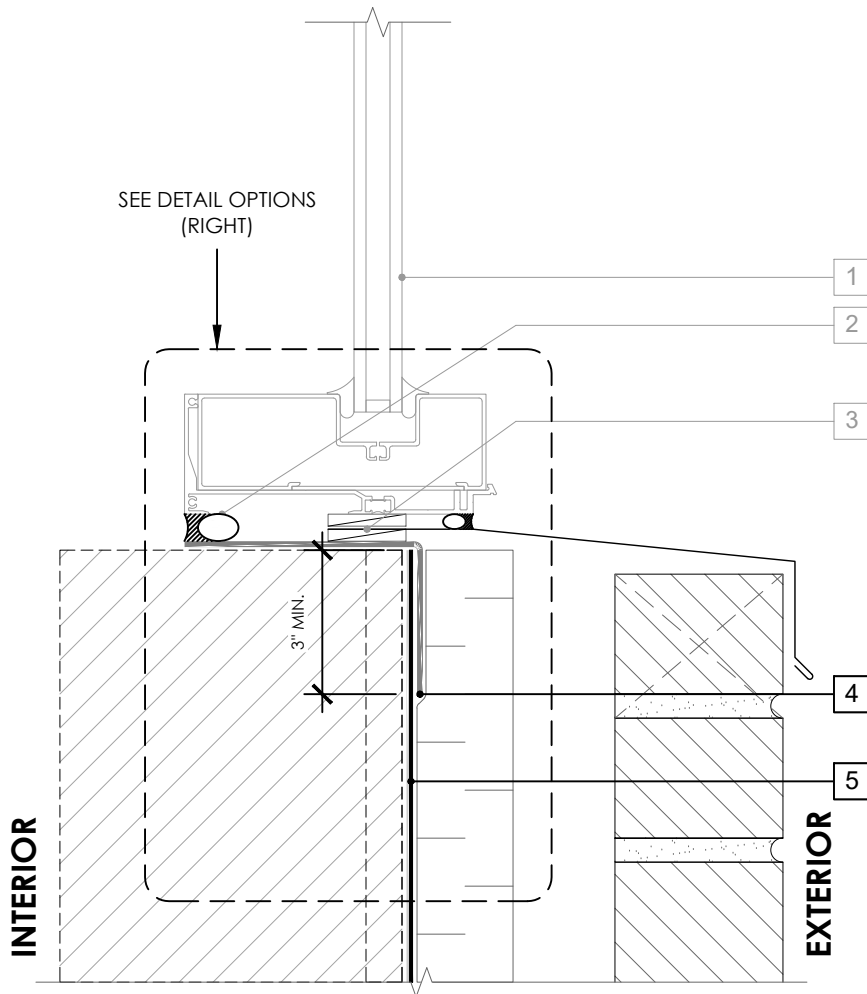


WINDOW JAMB DETAIL - MASONRY CLADDING

PERM-A-BARRIER® WALL MEMBRANE

DRAWING:	PWM-002
SCALE:	3" = 1'
EFFECTIVE DATE:	2020.05.21
SUPERCEDES:	NEW

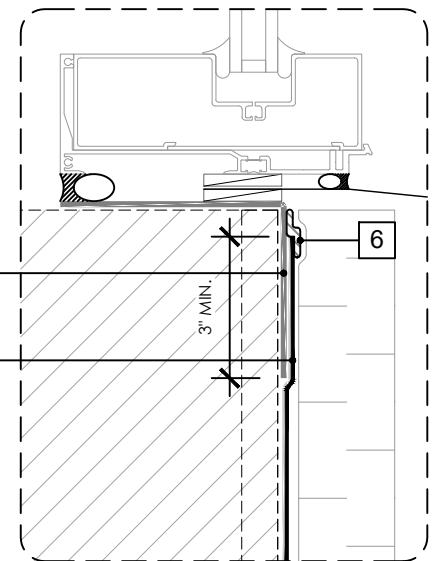
OPTION 1



LEGEND

1. NON-FLANGED WINDOW SYSTEM
2. INTERIOR AIR SEALANT OVER BACKER ROD
3. SHEET METAL FLASHING SANDWICHED BETWEEN INTERMITTENT SHIMS
4. **PERM-A-BARRIER® SELF-ADHERED FLASHING***
5. **PERM-A-BARRIER® WALL MEMBRANE**
6. **PERM-A-BARRIER® S100, PERM-A-BARRIER® LIQUID FLASHING, BITUTHENE MASTIC, OR BITUTHENE LIQUID MEMBRANE**

OPTION 2



GENERAL NOTES

1. Detail not suitable for all climates. Avoiding excessive moisture accumulation in exterior walls is dependent on many factors including proper placement of insulation and water, air, and vapor control layers in the wall. Confirm membranes are suitable for project specific service temperatures. For assistance with exterior wall design, consult with a building science professional.
2. Install all GCP products in accordance with GCP Product Data Sheets and GCP recommendations.
3. GCP products are indicated in the detail legend in **BOLDFACE** font. Detail components by others are indicated in GRAY FONT. Install components per manufacturer and project specific requirements.

Refer to air barrier system product data sheet for acceptable SELF-ADHERED FLASHING products.

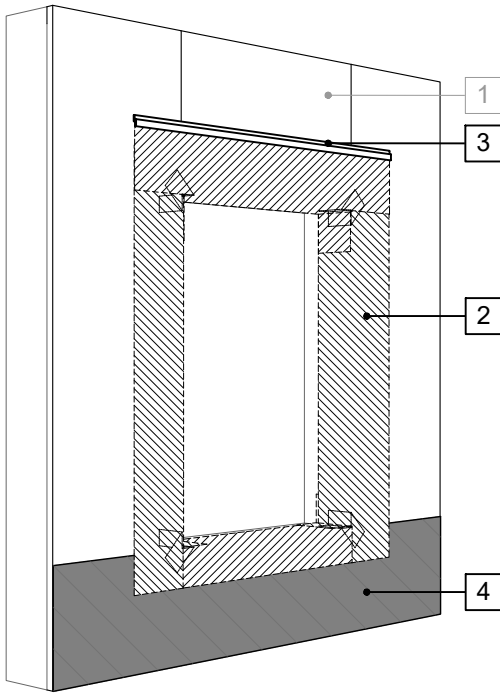


WINDOW SILL DETAIL - MASONRY CLADDING

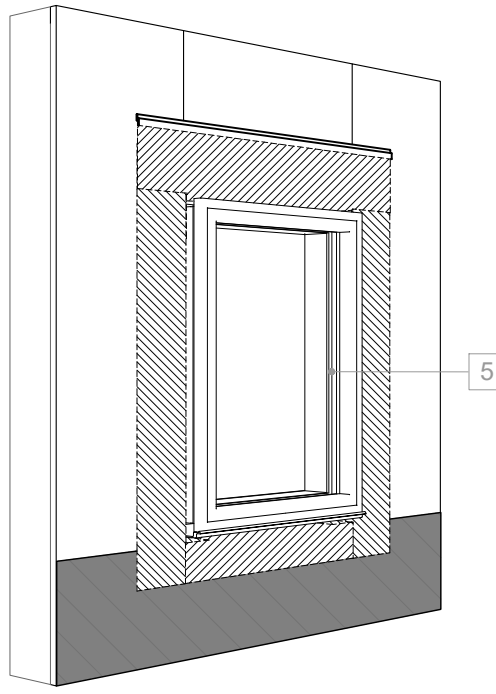
PERM-A-BARRIER® WALL MEMBRANE

DRAWING:	PWM-003
SCALE:	3" = 1'
EFFECTIVE DATE:	2020.05.21
SUPERCEDES:	NEW

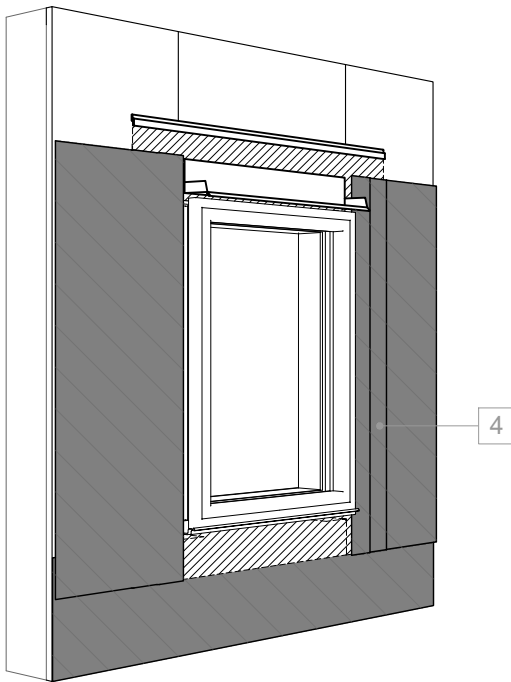
STEP 1



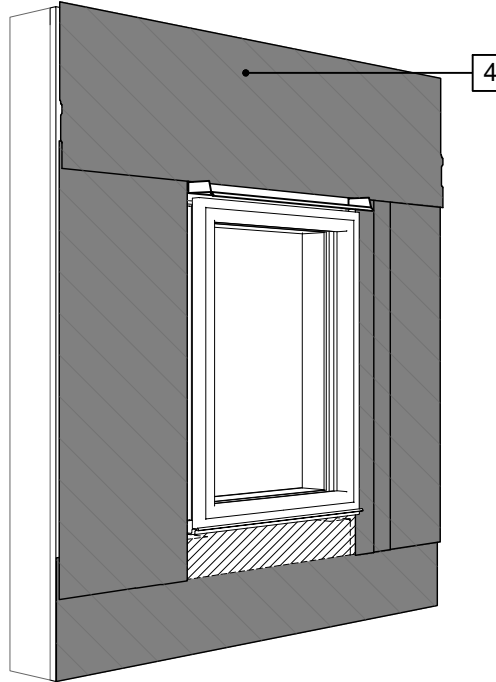
STEP 2



STEP 3



STEP 4



LEGEND

1. SHEATHING SUBSTRATE
2. PERM-A-BARRIER® DETAIL MEMBRANE, NPS DETAIL MEMBRANE, ALUMINUM FLASHING, OR WALL FLASHING - PRIME SUBSTRATE WHERE REQUIRED; SEE PWM-003 (3D-2)
3. PERM-A-BARRIER® S100, PERM-A-BARRIER® LIQUID FLASHING, BITUTHENE MASTIC, OR BITUTHENE LIQUID MEMBRANE - 1-INCH TROVELED BEAD
4. PERM-A-BARRIER® WALL MEMBRANE
5. WINDOW PER ARCH

NOTE

- CONTINUOUS AIR AND WATER SEAL AT PERIMETER OF FENESTRATION, FENESTRATION ATTACHMENT, AND DRAINAGE OF ROUGH OPENING TO BE PER PROJECT SPECIFIC REQUIREMENTS
- SEAL ALL NON-WATER SHEDDING EDGES WITH ACCEPTABLE SEALANT
- OPTIONAL: WINDOW FLASHING SEQUENCE CAN BE COMPLETED AFTER FIELD APPLICATION OF PERM-A-BARRIER® WALL MEMBRANE

GENERAL NOTES

1. Detail not suitable for all climates. Avoiding excessive moisture accumulation in exterior walls is dependent on many factors including proper placement of insulation and water, air, and vapor control layers in the wall. Confirm membranes are suitable for project specific service temperatures. For assistance with exterior wall design, consult with a building science professional.
2. Install all GCP products in accordance with GCP Product Data Sheets and GCP recommendations.
3. GCP products are indicated in the detail legend in **BOLDFACE** font. Detail components by others are indicated in GRAY FONT. Install components per manufacturer and project specific requirements.

*Refer to air barrier system product data sheet for acceptable self-adhered flashing products.



WINDOW FLASHING SEQUENCE - SHEET APPLIED FLASHING

PERM-A-BARRIER® WALL MEMBRANE

DRAWING: PWM-003 (3D-1)

SCALE: 3" = 1'

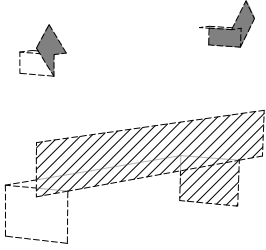
EFFECTIVE DATE: 2020.05.21

SUPERCEDES: NEW

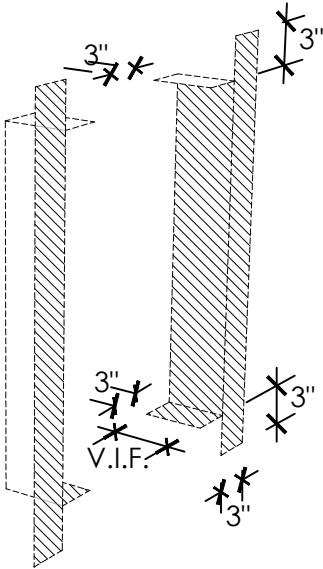
WINDOW PRESTRIP VARIATIONS

A. WITHOUT BACK DAM ANGLE

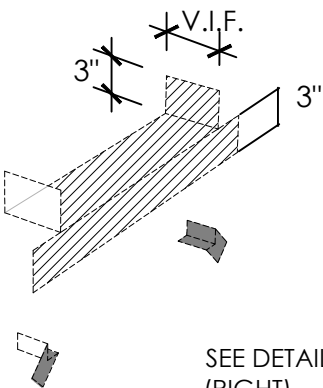
STEP 3



STEP 2



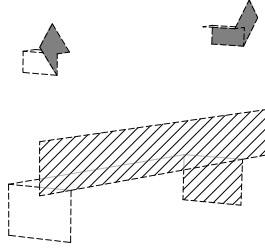
STEP 1



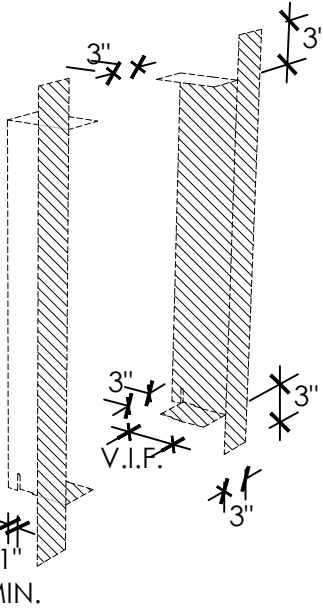
SEE DETAIL A (RIGHT)

B. WITH BACK DAM ANGLE

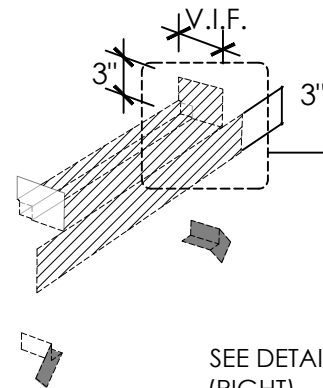
STEP 3



STEP 2



STEP 1

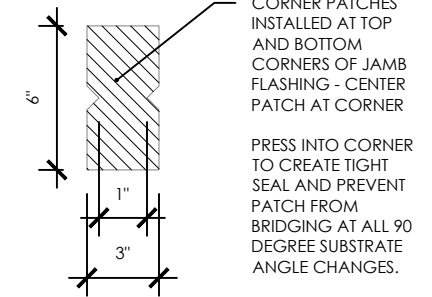


SEE DETAIL B (RIGHT)

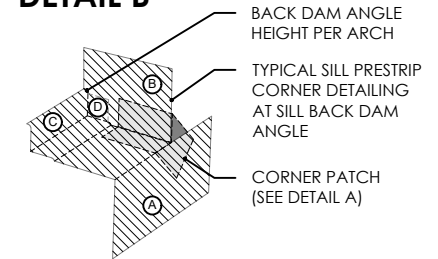
LEGEND

- WINDOW PRESTRIP PERM-A-BARRIER®
- DETAIL MEMBRANE, NPS DETAIL MEMBRANE, ALUMINUM FLASHING, OR WALL FLASHING
- PRIME SUBSTRATE WHERE REQUIRED

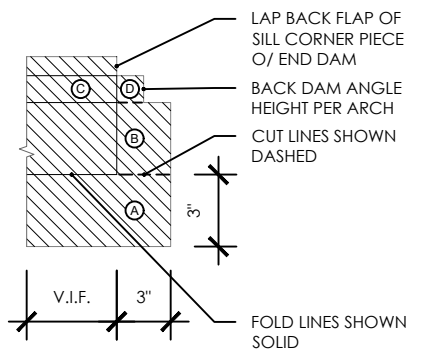
DETAIL A



DETAIL B



FOLDING TEMPLATE



GENERAL NOTES

1. Detail not suitable for all climates. Avoiding excessive moisture accumulation in exterior walls is dependent on many factors including proper placement of insulation and water, air, and vapor control layers in the wall. Confirm membranes are suitable for project specific service temperatures. For assistance with exterior wall design, consult with a building science professional.
2. Install all GCP products in accordance with GCP Product Data Sheets and GCP recommendations.
3. GCP products are indicated in the detail legend in **BOLDFACE** font. Detail components by others are indicated in GRAY FONT. Install components per manufacturer and project specific requirements.

Refer to air barrier system product data sheet for acceptable SELF-ADHERED FLASHING products.

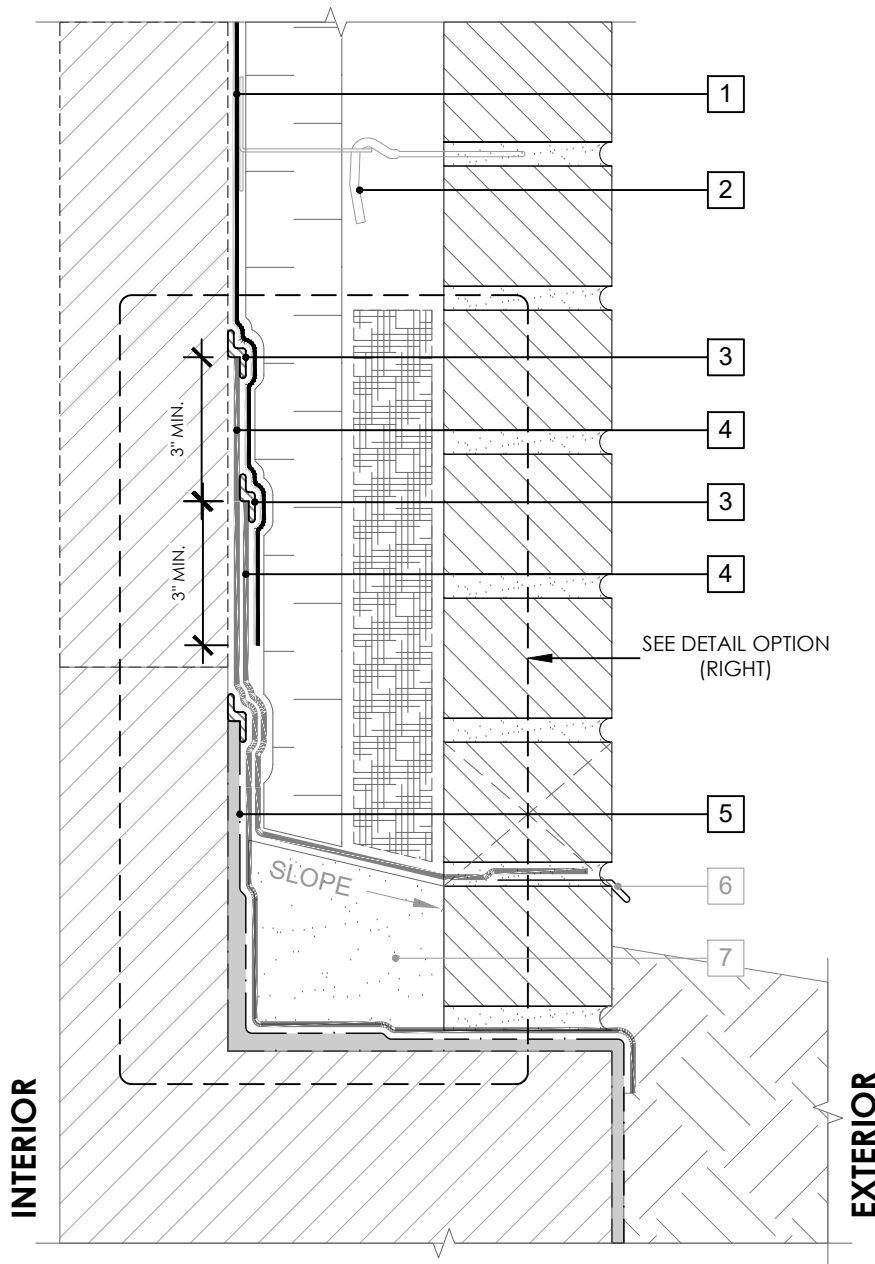


SHEET-APPLIED FLASHING PRESTRIP

PERM-A-BARRIER® WALL MEMBRANE

DRAWING:	PWM-003 (3D-2)
SCALE:	3" = 1'
EFFECTIVE DATE:	2020.05.21
SUPERCEDES:	NEW

OPTION 1

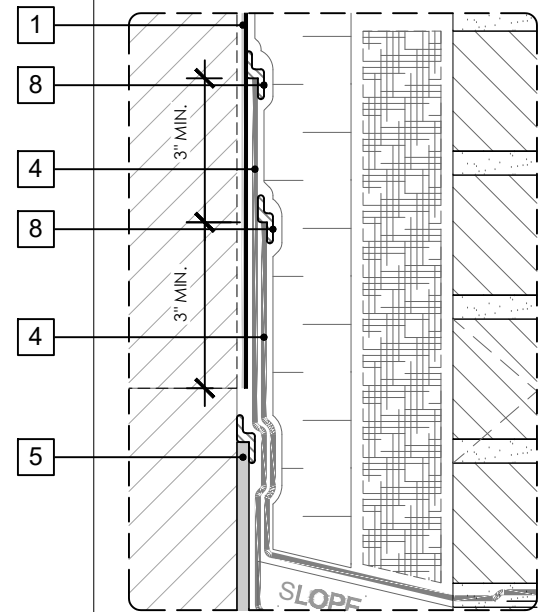


SEE PWM-004 (3D-1) FOR 3D DETAIL

LEGEND

1. PERM-A-BARRIER® WALL MEMBRANE
2. MASONRY ANCHOR DETAILING (SEE DRAWING PWM-006)
3. BITUTHENE MASTIC, BITUTHENE LIQUID MEMBRANE, OR GCP APPROVED SEALANT - 1-INCH TROWELED BEAD
4. PERM-A-BARRIER® WALL FLASHING - PRIME SUBSTRATE WHERE REQUIRED
5. BELOW GRADE WATERPROOFING SYSTEM - SEE GCPAT.COM
6. SHEET METAL FLASHING PER ARCH
7. GROUT SOLID TO HEIGHT OF CURB - SLOPE TOP
8. PERM-A-BARRIER® S100, PERM-A-BARRIER® LIQUID FLASHING, BITUTHENE MASTIC, OR BITUTHENE LIQUID MEMBRANE - 1-INCH TROWELED BEAD

OPTION 2



SEE PWM-004 (3D-2) FOR 3D DETAIL

GENERAL NOTES

1. Detail not suitable for all climates. Avoiding excessive moisture accumulation in exterior walls is dependent on many factors including proper placement of insulation and water, air, and vapor control layers in the wall. Confirm membranes are suitable for project specific service temperatures. For assistance with exterior wall design, consult with a building science professional.
2. Install all GCP products in accordance with GCP Product Data Sheets and GCP recommendations.
3. GCP products are indicated in the detail legend in **BOLDFACE** font. Detail components by others are indicated in GRAY FONT. Install components per manufacturer and project specific requirements.

Refer to air barrier system product data sheet for acceptable SELF-ADHERED FLASHING products.



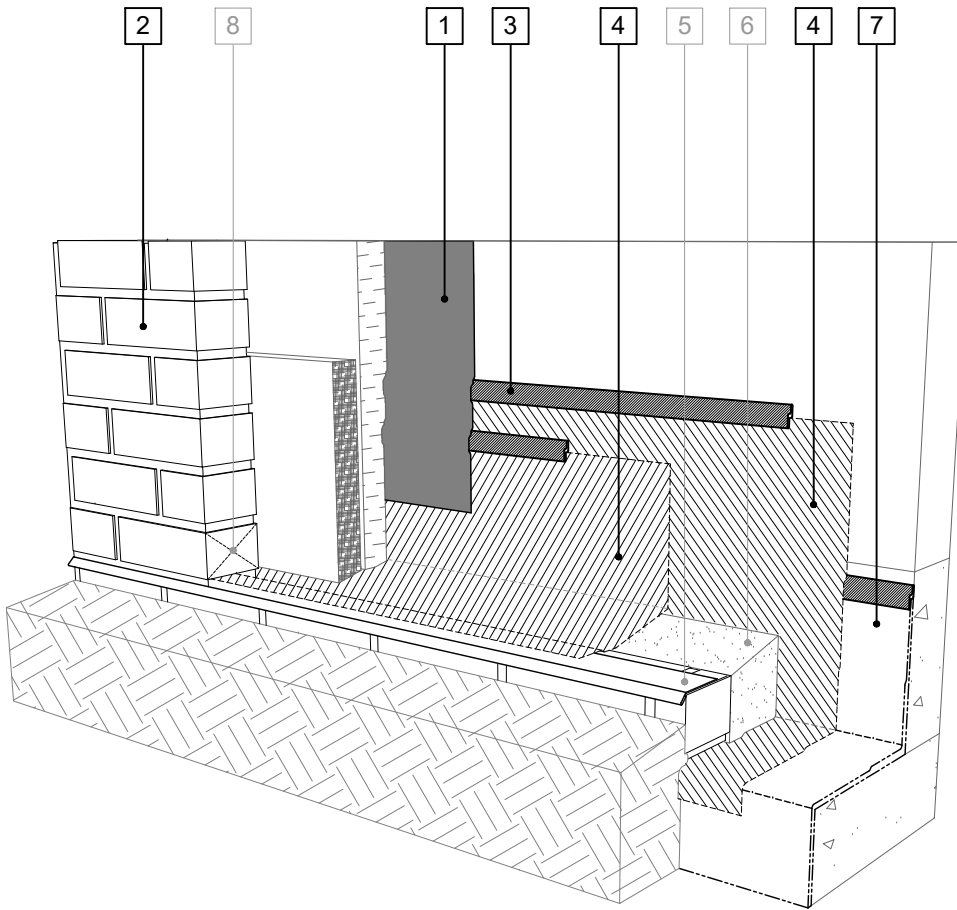
BASE OF WALL DETAIL - MASONRY CLADDING

PERM-A-BARRIER® WALL
MEMBRANE

DRAWING:	PWM-004
SCALE:	3" = 1'
EFFECTIVE DATE:	2020.05.21
SUPERCEDES:	NEW

LEGEND

1. PERM-A-BARRIER® WALL MEMBRANE
2. MASONRY ANCHOR DETAILING (SEE DRAWING PWM-006)
3. BITUTHENE MASTIC, BITUTHENE LIQUID MEMBRANE, OR GCP APPROVED SEALANT - 1-INCH TROWELED BEAD
4. PERM-A-BARRIER® WALL FLASHING - PRIME SUBSTRATE WHERE REQUIRED
5. SHEET METAL FLASHING PER ARCH
6. GROUT SOLID TO HEIGHT OF CURB - SLOPE TOP
7. BELOW GRADE WATERPROOFING SYSTEM - SEE GCPAT.COM
8. MASONRY WEEP/VENT



SEE PWM-004 (OPTION 1) FOR 2D DETAIL

GENERAL NOTES

1. Detail not suitable for all climates. Avoiding excessive moisture accumulation in exterior walls is dependent on many factors including proper placement of insulation and water, air, and vapor control layers in the wall. Confirm membranes are suitable for project specific service temperatures. For assistance with exterior wall design, consult with a building science professional.
2. Install all GCP products in accordance with GCP Product Data Sheets and GCP recommendations.
3. GCP products are indicated in the detail legend in **BOLDFACE** font. Detail components by others are indicated in GRAY FONT. Install components per manufacturer and project specific requirements.

Refer to air barrier system product data sheet for acceptable SELF-ADHERED FLASHING products.



BASE OF WALL FLASHING SEQUENCE (OPTION 1) - MASONRY CLADDING

PERM-A-BARRIER® WALL MEMBRANE

DRAWING: PWM-004 (3D-1)

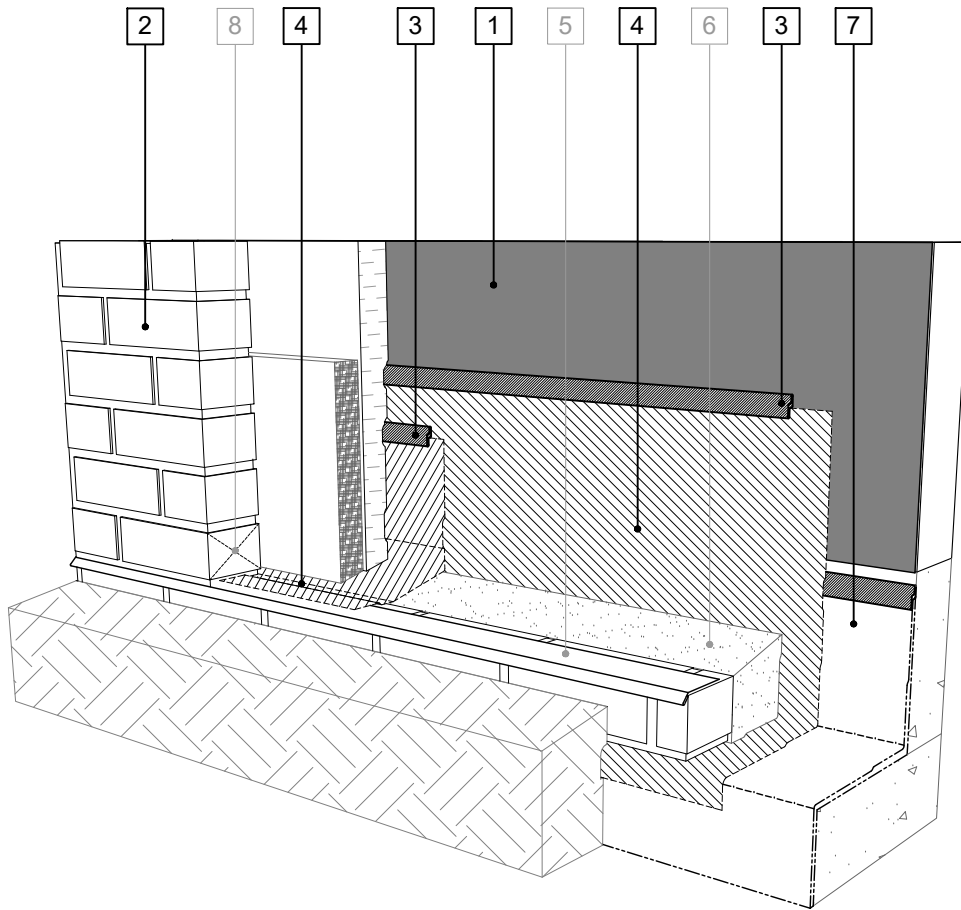
SCALE: 3" = 1'

EFFECTIVE DATE: 2020.05.21

SUPERCEDES: NEW

LEGEND

1. **PERM-A-BARRIER® WALL MEMBRANE**
2. **MASONRY ANCHOR DETAILING (SEE DRAWING PWM-006)**
3. **PERM-A-BARRIER® S100, PERM-A-BARRIER® LIQUID FLASHING, BITUTHENE MASTIC, OR BITUTHENE LIQUID MEMBRANE - 1-INCH TROWELED BEAD**
4. **PERM-A-BARRIER® WALL FLASHING - PRIME SUBSTRATE WHERE REQUIRED**
5. SHEET METAL FLASHING PER ARCH
6. GROUT SOLID TO HEIGHT OF CURB - SLOPE TOP
7. **BELOW GRADE WATERPROOFING SYSTEM - SEE GCPAT.COM**
8. MASONRY WEEP/VENT



SEE PWM-004 (OPTION 2) FOR 2D DETAIL

GENERAL NOTES

1. Detail not suitable for all climates. Avoiding excessive moisture accumulation in exterior walls is dependent on many factors including proper placement of insulation and water, air, and vapor control layers in the wall. Confirm membranes are suitable for project specific service temperatures. For assistance with exterior wall design, consult with a building science professional.
2. Install all GCP products in accordance with GCP Product Data Sheets and GCP recommendations.
3. GCP products are indicated in the detail legend in **BOLDFACE** font. Detail components by others are indicated in GRAY FONT. Install components per manufacturer and project specific requirements.

Refer to air barrier system product data sheet for acceptable SELF-ADHERED FLASHING products.



BASE OF WALL FLASHING SEQUENCE (OPTION 2) - MASONRY CLADDING

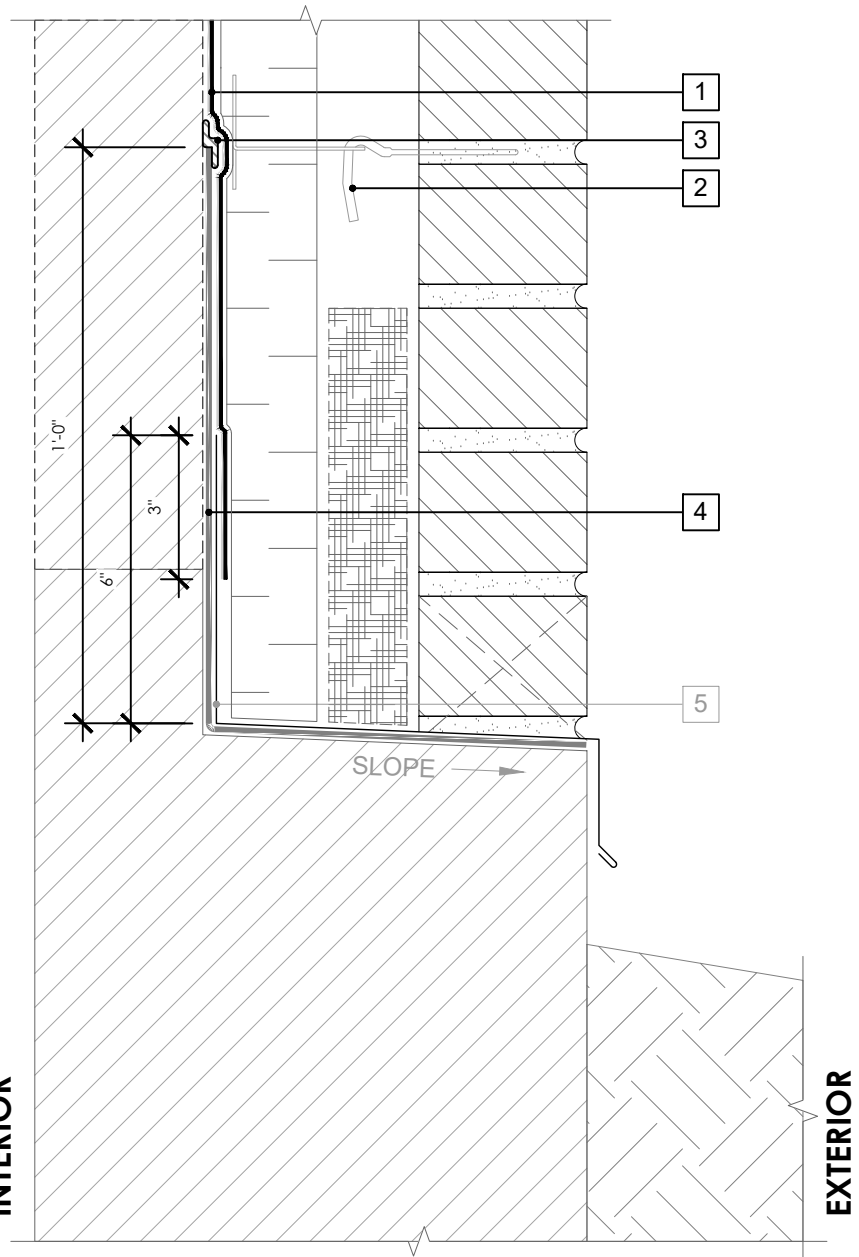
PERM-A-BARRIER® WALL
MEMBRANE

DRAWING: PWM-004 (3D-2)

SCALE: 3" = 1'

EFFECTIVE DATE: 2020.05.21

SUPERCEDES: NEW



LEGEND

- 1. PERM-A-BARRIER® WALL MEMBRANE
- 2. MASONRY ANCHOR DETAILING (SEE DRAWING PWM-006)
- 3. BITUTHENE MASTIC, BITUTHENE LIQUID MEMBRANE, OR GCP APPROVED SEALANT - 1-INCH TROWELED BEAD
- 4. PERM-A-BARRIER® WALL FLASHING
- 5. SHEET METAL FLASHING PER ARCH

GENERAL NOTES

- 1. Detail not suitable for all climates. Avoiding excessive moisture accumulation in exterior walls is dependent on many factors including proper placement of insulation and water, air, and vapor control layers in the wall. Confirm membranes are suitable for project specific service temperatures. For assistance with exterior wall design, consult with a building science professional.
- 2. Install all GCP products in accordance with GCP Product Data Sheets and GCP recommendations.
- 3. GCP products are indicated in the detail legend in **BOLDFACE** font. Detail components by others are indicated in GRAY FONT. Install components per manufacturer and project specific requirements.

Refer to air barrier system product data sheet for acceptable SELF-ADHERED FLASHING products.



BASE OF WALL DETAIL (ALTERNATE 1) - MASONRY CLADDING

PERM-A-BARRIER® WALL MEMBRANE

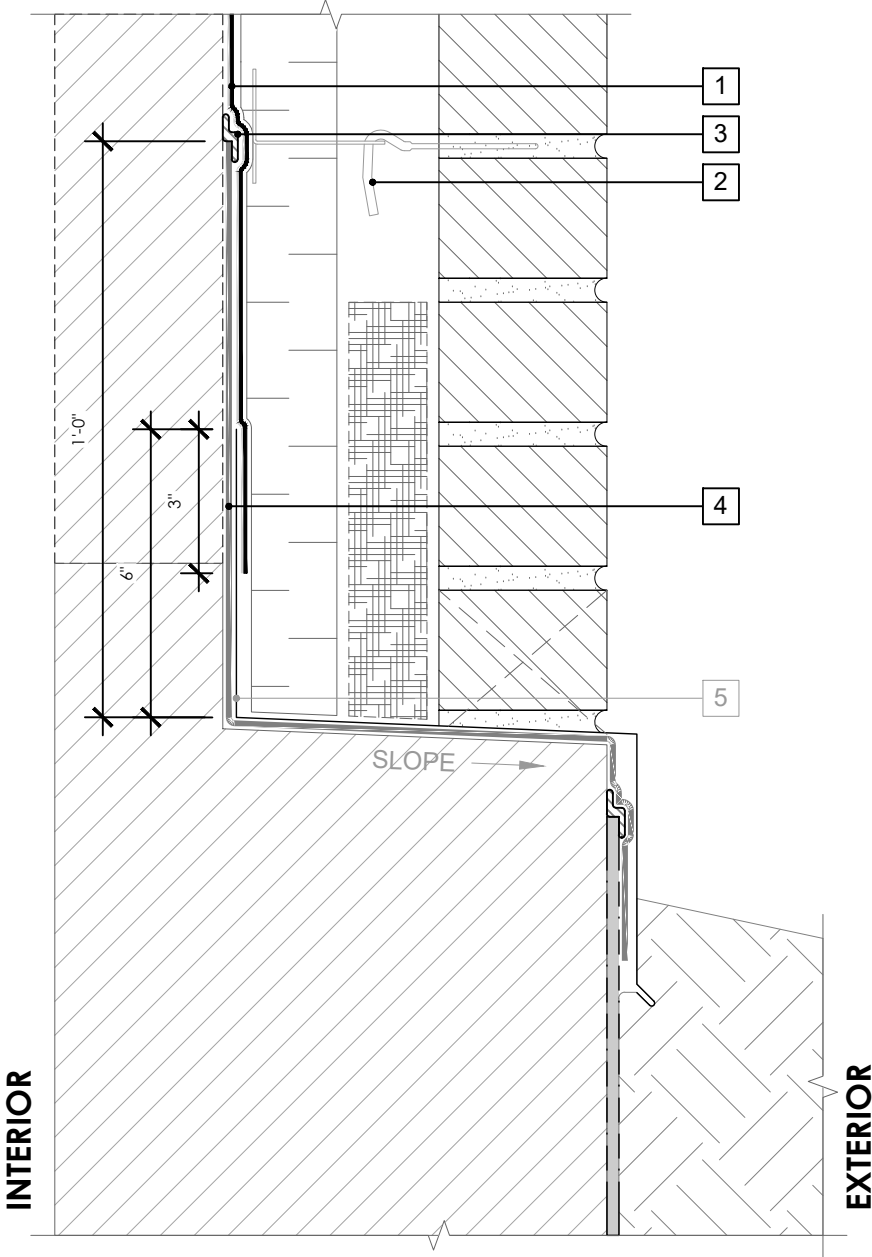
DRAWING:	PWM-004 (ALT 1)
SCALE:	3" = 1'
EFFECTIVE DATE:	2020.05.21
SUPERCEDES:	NEW

LEGEND

- 1. PERM-A-BARRIER® WALL MEMBRANE
- 2. MASONRY ANCHOR DETAILING (SEE DRAWING PWM-006)
- 3. BITUTHENE MASTIC, BITUTHENE LIQUID MEMBRANE, OR GCP APPROVED SEALANT - 1-INCH TROWELED BEAD
- 4. PERM-A-BARRIER® WALL FLASHING
- 5. SHEET METAL FLASHING PER ARCH

NOTE

- CONSULT GCP FOR BELOW GRADE WATERPROOFING COMPATIBILITY AND CONNECTION



GENERAL NOTES

- 1. Detail not suitable for all climates. Avoiding excessive moisture accumulation in exterior walls is dependent on many factors including proper placement of insulation and water, air, and vapor control layers in the wall. Confirm membranes are suitable for project specific service temperatures. For assistance with exterior wall design, consult with a building science professional.
- 2. Install all GCP products in accordance with GCP Product Data Sheets and GCP recommendations.
- 3. GCP products are indicated in the detail legend in **BOLDFACE** font. Detail components by others are indicated in GRAY FONT. Install components per manufacturer and project specific requirements.

Refer to air barrier system product data sheet for acceptable SELF-ADHERED FLASHING products.

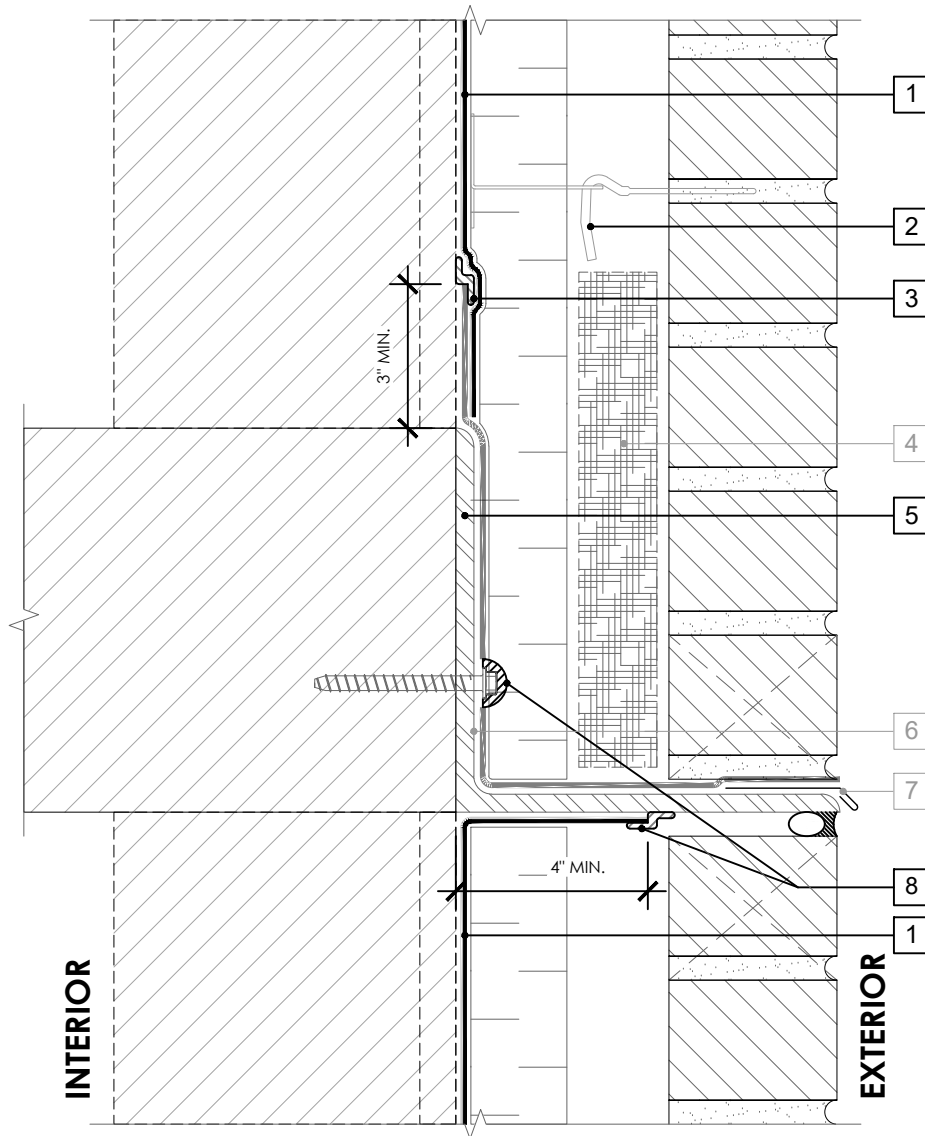


**BASE OF WALL DETAIL (ALTERNATE 2) -
MASONRY CLADDING**

**PERM-A-BARRIER® WALL
MEMBRANE**

DRAWING:	PWM-004 (ALT 2)
SCALE:	3" = 1'
EFFECTIVE DATE:	2020.05.21
SUPERCEDES:	NEW

OPTION 1

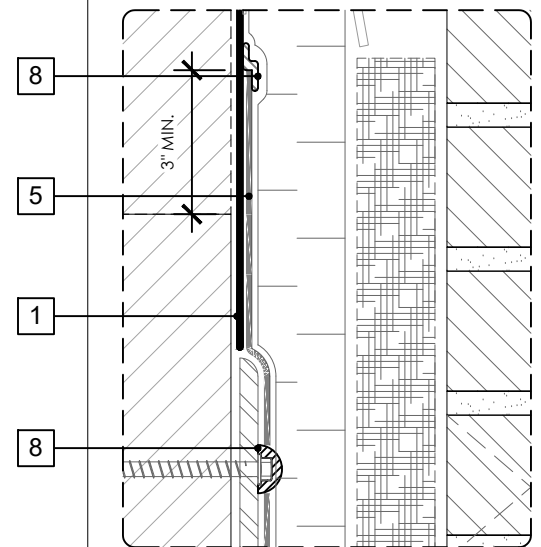


SEE PWM-005 (3D-1) FOR 3D DETAIL

LEGEND

1. PERM-A-BARRIER® WALL MEMBRANE
2. MASONRY ANCHOR DETAILING (SEE DRAWING PWM-006)
3. BITUTHENE MASTIC, BITUTHENE LIQUID MEMBRANE, OR GCP APPROVED SEALANT - 1-INCH TROWELED BEAD
4. MORTAR COLLECTION MESH
5. PERM-A-BARRIER® WALL FLASHING (STAR CUT AT BOLT), PRIME SUBSTRATE WHERE REQUIRED
6. CONTINUOUS SHELF ANGLE SUPPORT PER STRUCTURAL
7. SHEET METAL FLASHING PER ARCH
8. PERM-A-BARRIER® S100, PERM-A-BARRIER® LIQUID FLASHING, BITUTHENE MASTIC, OR BITUTHENE LIQUID MEMBRANE

OPTION 2



SEE PWM-005 (3D-2) FOR 3D DETAIL

GENERAL NOTES

1. Detail not suitable for all climates. Avoiding excessive moisture accumulation in exterior walls is dependent on many factors including proper placement of insulation and water, air, and vapor control layers in the wall. Confirm membranes are suitable for project specific service temperatures. For assistance with exterior wall design, consult with a building science professional.
2. Install all GCP products in accordance with GCP Product Data Sheets and GCP recommendations.
3. GCP products are indicated in the detail legend in **BOLDFACE** font. Detail components by others are indicated in GRAY FONT. Install components per manufacturer and project specific requirements.

Refer to air barrier system product data sheet for acceptable SELF-ADHERED FLASHING products.



FLOOR LINE DETAIL - MASONRY CLADDING

PERM-A-BARRIER® WALL
MEMBRANE

DRAWING: PWM-005

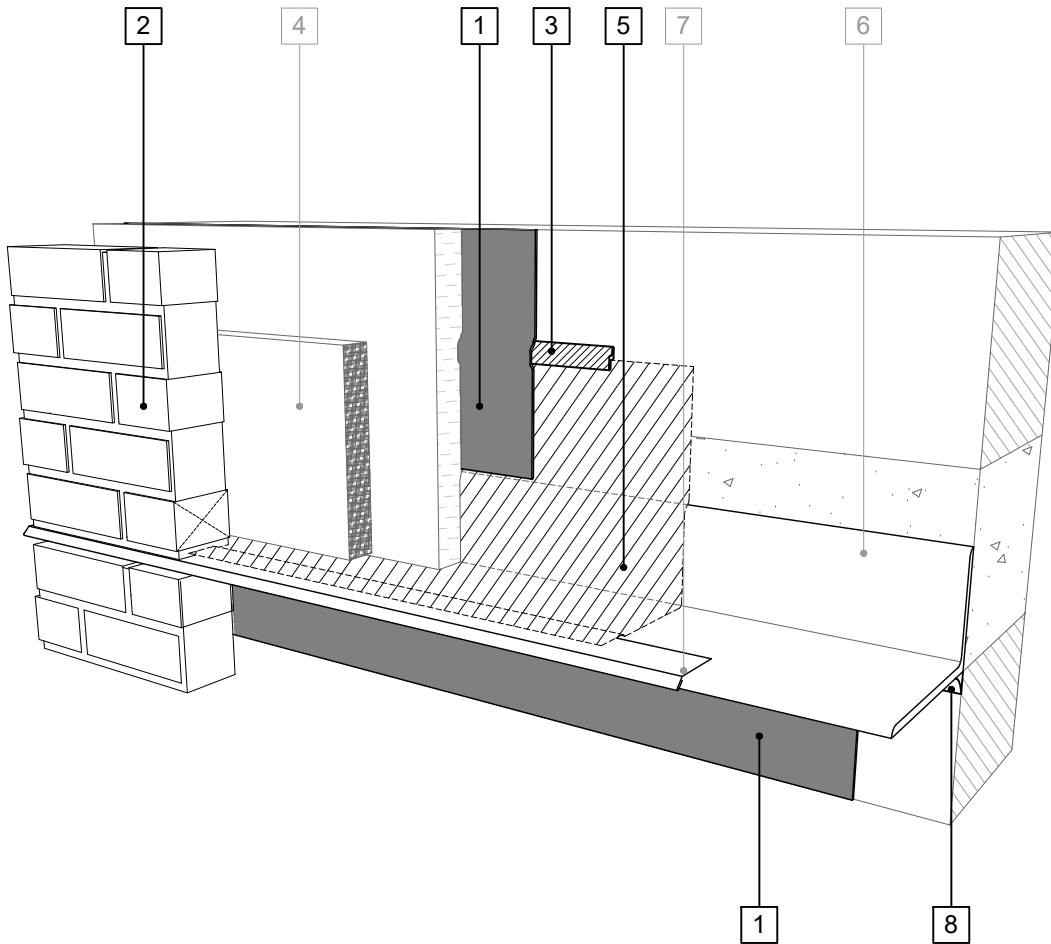
SCALE: 3" = 1'

EFFECTIVE DATE: 2020.05.21

SUPERCEDES: NEW

LEGEND

1. **PERM-A-BARRIER® WALL MEMBRANE**
2. **MASONRY ANCHOR DETAILING (SEE DRAWING PWM-006)**
3. **BITUTHENE MASTIC, BITUTHENE LIQUID MEMBRANE, OR GCP APPROVED SEALANT - 1-INCH TROWELED BEAD**
4. MORTAR COLLECTION MESH
5. **PERM-A-BARRIER® WALL FLASHING, PRIME SUBSTRATE WHERE REQUIRED**
6. CONTINUOUS SHELF ANGLE SUPPORT PER STRUCTURAL
7. SHEET METAL FLASHING PER ARCH
8. **PERM-A-BARRIER® S100, PERM-A-BARRIER® LIQUID FLASHING, BITUTHENE MASTIC, OR BITUTHENE LIQUID MEMBRANE**



SEE PWM-005 (OPTION 1) FOR 2D DETAIL

GENERAL NOTES

1. Detail not suitable for all climates. Avoiding excessive moisture accumulation in exterior walls is dependent on many factors including proper placement of insulation and water, air, and vapor control layers in the wall. Confirm membranes are suitable for project specific service temperatures. For assistance with exterior wall design, consult with a building science professional.
2. Install all GCP products in accordance with GCP Product Data Sheets and GCP recommendations.
3. GCP products are indicated in the detail legend in **BOLDFACE** font. Detail components by others are indicated in GRAY FONT. Install components per manufacturer and project specific requirements.

Refer to air barrier system product data sheet for acceptable SELF-ADHERED FLASHING products.



FLOOR LINE FLASHING SEQUENCE (OPT. 1) - MASONRY CLADDING

PERM-A-BARRIER® WALL
MEMBRANE

DRAWING: PWM-005 (3D-1)

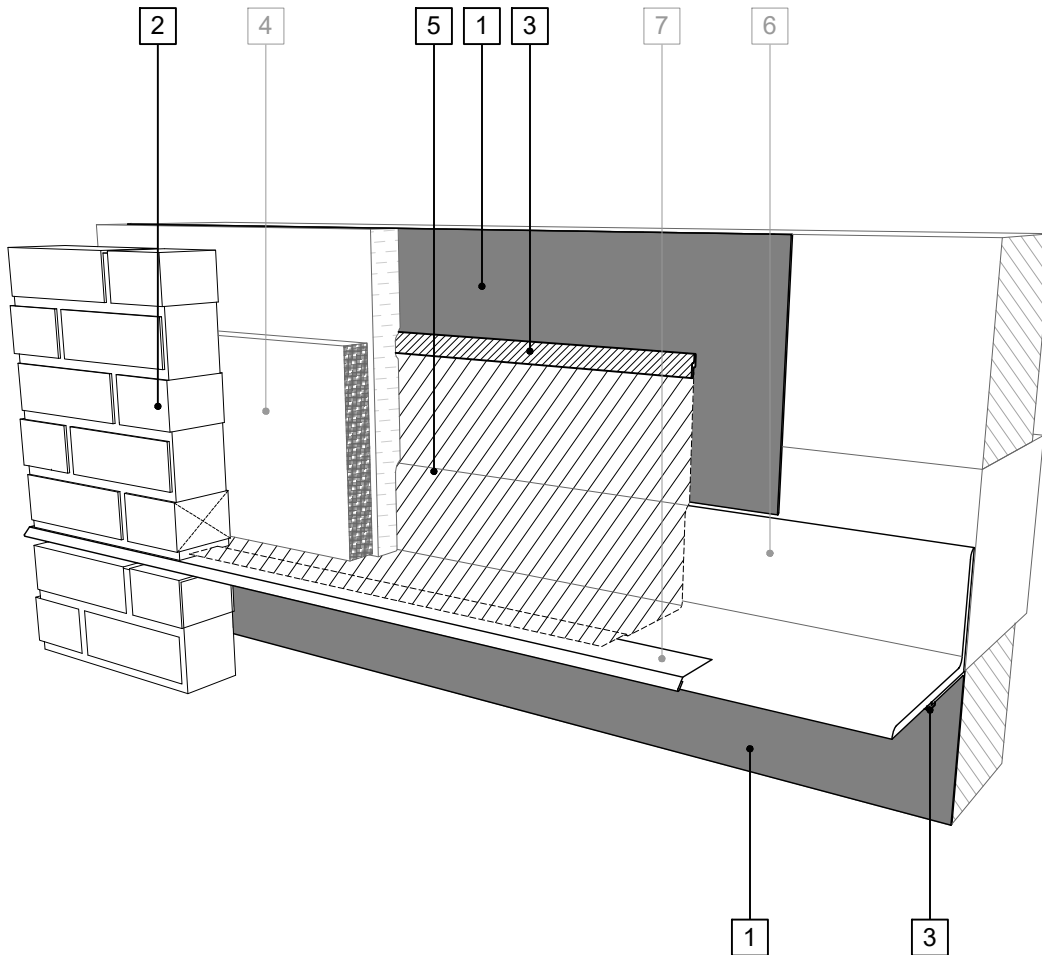
SCALE: 3" = 1'

EFFECTIVE DATE: 2020.05.21

SUPERCEDES: NEW

LEGEND

1. **PERM-A-BARRIER® WALL MEMBRANE**
2. **MASONRY ANCHOR DETAILING (SEE DRAWING PWM-006)**
3. **PERM-A-BARRIER® S100, PERM-A-BARRIER® LIQUID FLASHING, BITUTHENE MASTIC, OR BITUTHENE LIQUID MEMBRANE - 1-INCH TROWELED BEAD**
4. MORTAR COLLECTION MESH
5. **PERM-A-BARRIER® WALL FLASHING, PRIME SUBSTRATE WHERE REQUIRED**
6. CONTINUOUS SHELF ANGLE SUPPORT PER STRUCTURAL
7. SHEET METAL FLASHING PER ARCH



SEE PWM-005 (OPTION 2) FOR 2D DETAIL

GENERAL NOTES

1. Detail not suitable for all climates. Avoiding excessive moisture accumulation in exterior walls is dependent on many factors including proper placement of insulation and water, air, and vapor control layers in the wall. Confirm membranes are suitable for project specific service temperatures. For assistance with exterior wall design, consult with a building science professional.
2. Install all GCP products in accordance with GCP Product Data Sheets and GCP recommendations.
3. GCP products are indicated in the detail legend in **BOLDFACE** font. Detail components by others are indicated in GRAY FONT. Install components per manufacturer and project specific requirements.

Refer to air barrier system product data sheet for acceptable SELF-ADHERED FLASHING products.



FLOOR LINE FLASHING SEQUENCE (OPT. 2) - MASONRY CLADDING

PERM-A-BARRIER® WALL
MEMBRANE

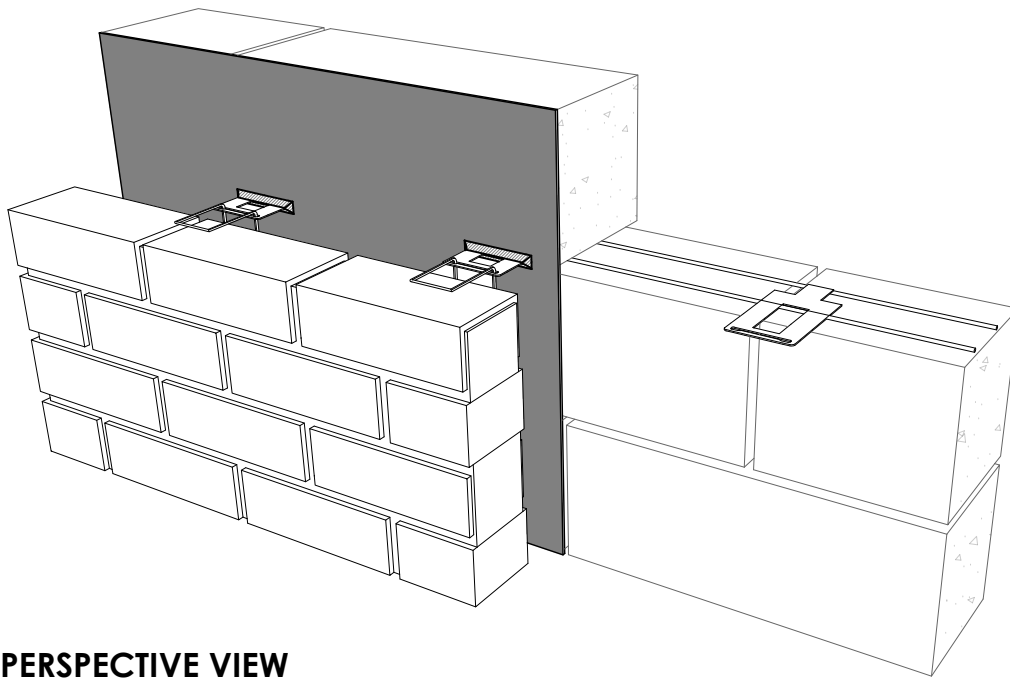
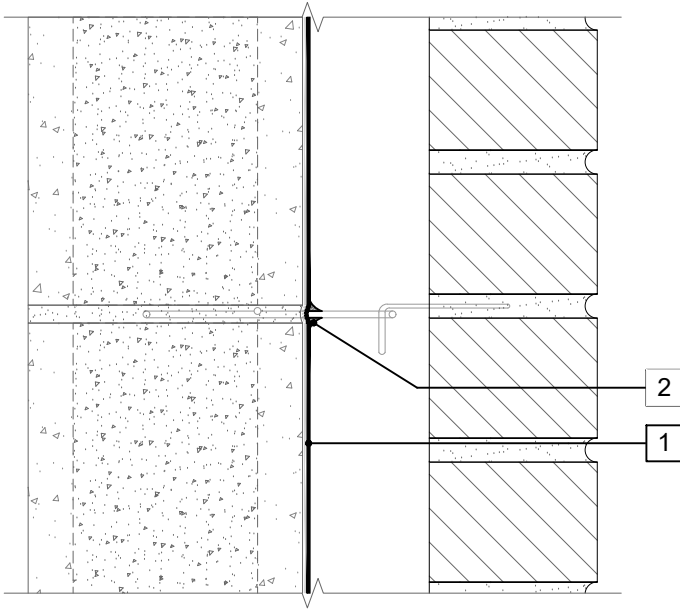
DRAWING: PWM-005 (3D-2)

SCALE: 3" = 1'

EFFECTIVE DATE: 2020.05.21

SUPERCEDES: NEW

SECTION VIEW



PERSPECTIVE VIEW

LEGEND

1. PERM-A-BARRIER® WALL MEMBRANE
2. PERM-A-BARRIER® S100, PERM-A-BARRIER® LIQUID FLASHING, BITUTHENE MASTIC, OR BITUTHENE LIQUID MEMBRANE FILLET SURROUNDING WIRE TIE PENETRATION

NOTE

- ALL CMU JOINTS TO BE STRUCK FULL AND FLUSH

GENERAL NOTES

1. Detail not suitable for all climates. Avoiding excessive moisture accumulation in exterior walls is dependent on many factors including proper placement of insulation and water, air, and vapor control layers in the wall. Confirm membranes are suitable for project specific service temperatures. For assistance with exterior wall design, consult with a building science professional.
2. Install all GCP products in accordance with GCP Product Data Sheets and GCP recommendations.
3. GCP products are indicated in the detail legend in **BOLDFACE** font. Detail components by others are indicated in GRAY FONT. Install components per manufacturer and project specific requirements.

Refer to air barrier system product data sheet for acceptable SELF-ADHERED FLASHING products.



MASONRY ANCHOR DETAIL - CMU SUBSTRATE

PERM-A-BARRIER® WALL MEMBRANE

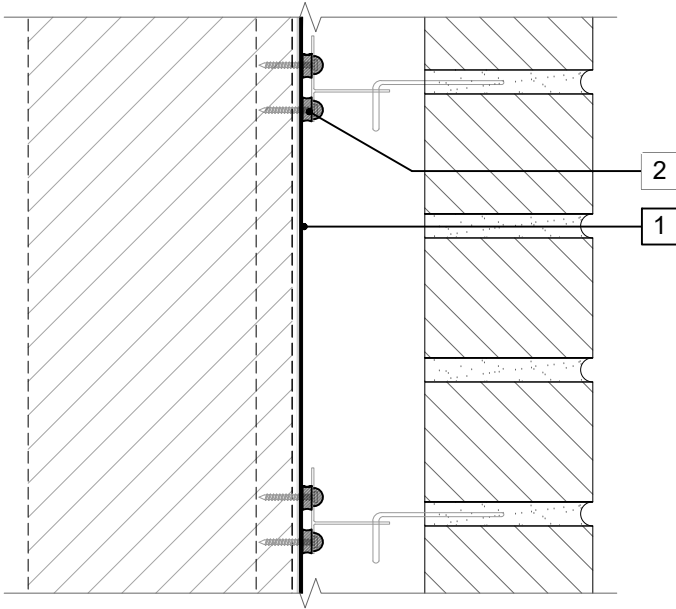
DRAWING: PWM-006A

SCALE: 3" = 1'

EFFECTIVE DATE: 2020.05.21

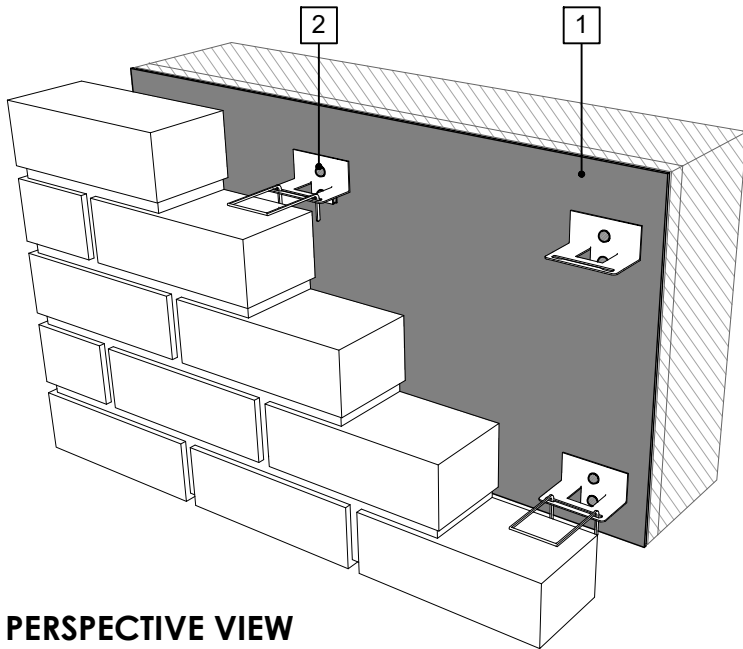
SUPERCEDES: NEW

SECTION VIEW



LEGEND

1. PERM-A-BARRIER® WALL MEMBRANE
2. PERM-A-BARRIER® S100, PERM-A-BARRIER® LIQUID FLASHING, BITUTHENE MASTIC, OR BITUTHENE LIQUID MEMBRANE AROUND FASTENER AT FRONT AND BACK FACE OF MASONRY ANCHOR



PERSPECTIVE VIEW

GENERAL NOTES

1. Detail not suitable for all climates. Avoiding excessive moisture accumulation in exterior walls is dependent on many factors including proper placement of insulation and water, air, and vapor control layers in the wall. Confirm membranes are suitable for project specific service temperatures. For assistance with exterior wall design, consult with a building science professional.
2. Install all GCP products in accordance with GCP Product Data Sheets and GCP recommendations.
3. GCP products are indicated in the detail legend in **BOLDFACE** font. Detail components by others are indicated in GRAY FONT. Install components per manufacturer and project specific requirements.

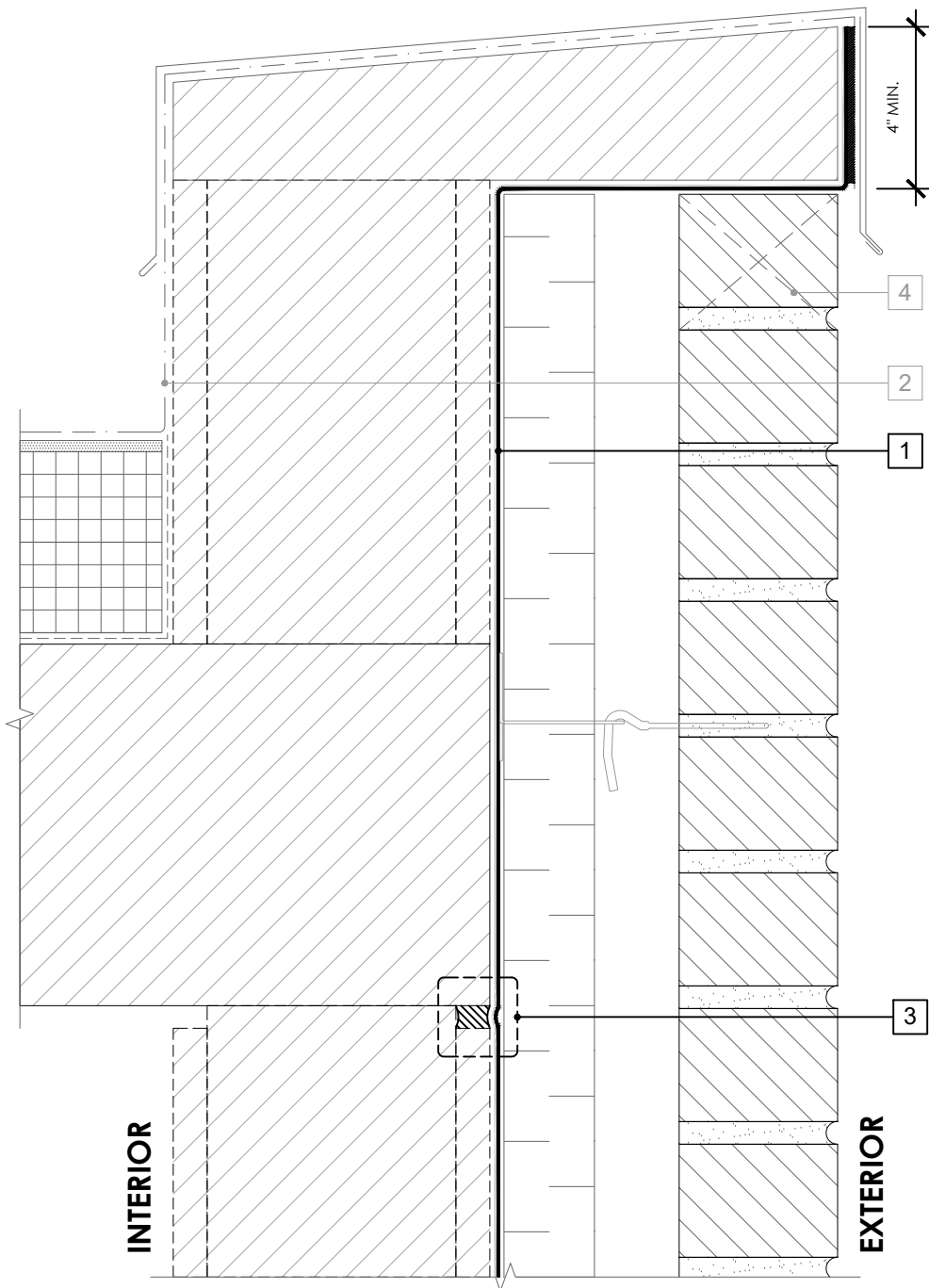
Refer to air barrier system product data sheet for acceptable SELF-ADHERED FLASHING products.



MASONRY ANCHOR DETAIL - FRAMED SUBSTRATE

PERM-A-BARRIER® WALL MEMBRANE

DRAWING:	PWM-006B
SCALE:	3" = 1'
EFFECTIVE DATE:	2020.05.21
SUPERCEDES:	NEW



LEGEND

1. **PERM-A-BARRIER® WALL MEMBRANE**
2. ROOF MEMBRANE AND ROOF DETAILS
3. SEE CONTROL JOINT DETAIL PWM-009
4. MASONRY WEEP/VENT

NOTE

- CONSULT GCP & ROOFING MANUFACTURER FOR COMPATIBILITY AND CONNECTION AT ROOF INTERFACE

GENERAL NOTES

1. Detail not suitable for all climates. Avoiding excessive moisture accumulation in exterior walls is dependent on many factors including proper placement of insulation and water, air, and vapor control layers in the wall. Confirm membranes are suitable for project specific service temperatures. For assistance with exterior wall design, consult with a building science professional.
2. Install all GCP products in accordance with GCP Product Data Sheets and GCP recommendations.
3. GCP products are indicated in the detail legend in **BOLDFACE** font. Detail components by others are indicated in GRAY FONT. Install components per manufacturer and project specific requirements.

Refer to air barrier system product data sheet for acceptable SELF-ADHERED FLASHING products.



PARAPET DETAIL - MASONRY CLADDING

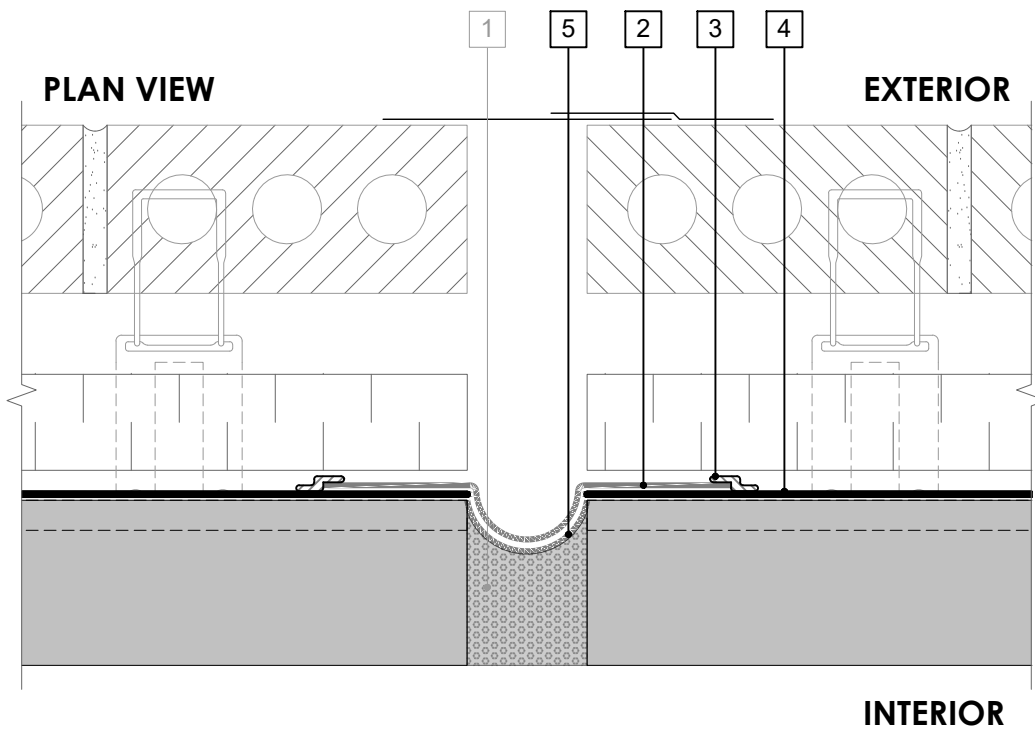
PERM-A-BARRIER® WALL
MEMBRANE

DRAWING: PWM-007

SCALE: 3" = 1'

EFFECTIVE DATE: 2020.05.21

SUPERCEDES: NEW

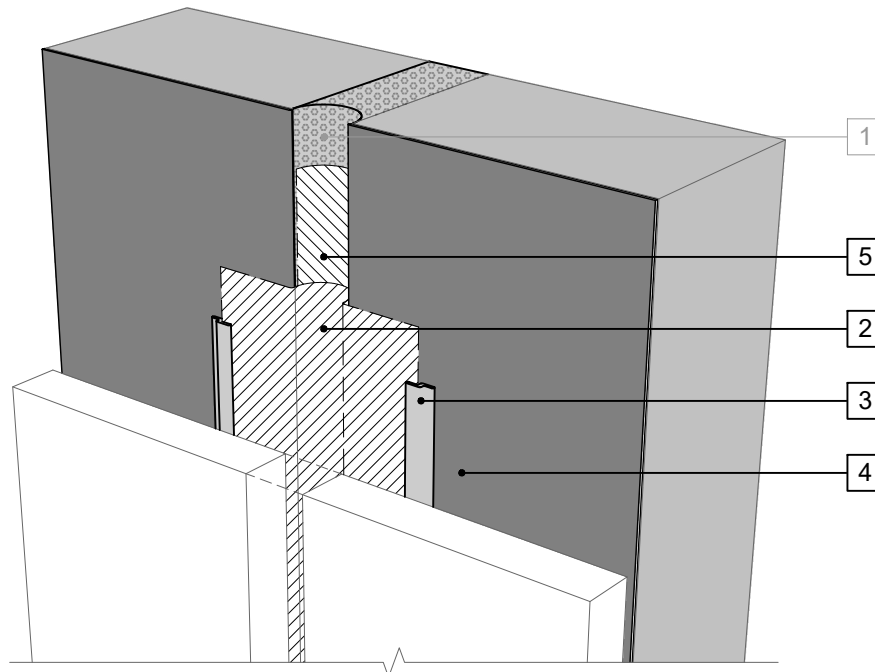


LEGEND

1. COMPRESSIBLE JOINT FILLER - MAXIMUM 4-INCH WIDE JOINT CAPABLE OF A MAXIMUM 50% MOVEMENT IN COMPRESSION AND ELONGATION
2. **PERM-A-BARRIER® SELF-ADHERED FLASHING***
3. **PERM-A-BARRIER® S100, PERM-A-BARRIER® LIQUID FLASHING, BITUTHENE MASTIC, OR BITUTHENE LIQUID MEMBRANE - 1-INCH TROWELED BEAD**
4. **PERM-A-BARRIER® WALL MEMBRANE**
5. **PERM-A-BARRIER® SELF-ADHERED FLASHING* INVERTED STRIP**

NOTE

- WIDTH OF THE INVERTED STRIP SHALL BE TWICE THE WIDTH OF THE EXPANSION JOINT TO ACCOMMODATE MOVEMENT - ALL SEAMS, OVERLAPS, JOINTS, AND EDGES SEALED WITH S100
- MAXIMUM 4 INCH WIDE JOINT CAPABLE OF A MAXIMUM 50% MOVEMENT IN COMPRESSION AND ELONGATION
- CLADDING AND CLOSURE BY OTHERS NOT SHOWN FOR CLARITY



PERSPECTIVE VIEW

GENERAL NOTES

1. Detail not suitable for all climates. Avoiding excessive moisture accumulation in exterior walls is dependent on many factors including proper placement of insulation and water, air, and vapor control layers in the wall. Confirm membranes are suitable for project specific service temperatures. For assistance with exterior wall design, consult with a building science professional.
2. Install all GCP products in accordance with GCP Product Data Sheets and GCP recommendations.
3. GCP products are indicated in the detail legend in **BOLDFACE** font. Detail components by others are indicated in **GRAY FONT**. Install components per manufacturer and project specific requirements.

Refer to air barrier system product data sheet for acceptable SELF-ADHERED FLASHING products.



EXPANSION JOINT DETAIL - MASONRY CLADDING

PERM-A-BARRIER® WALL
MEMBRANE

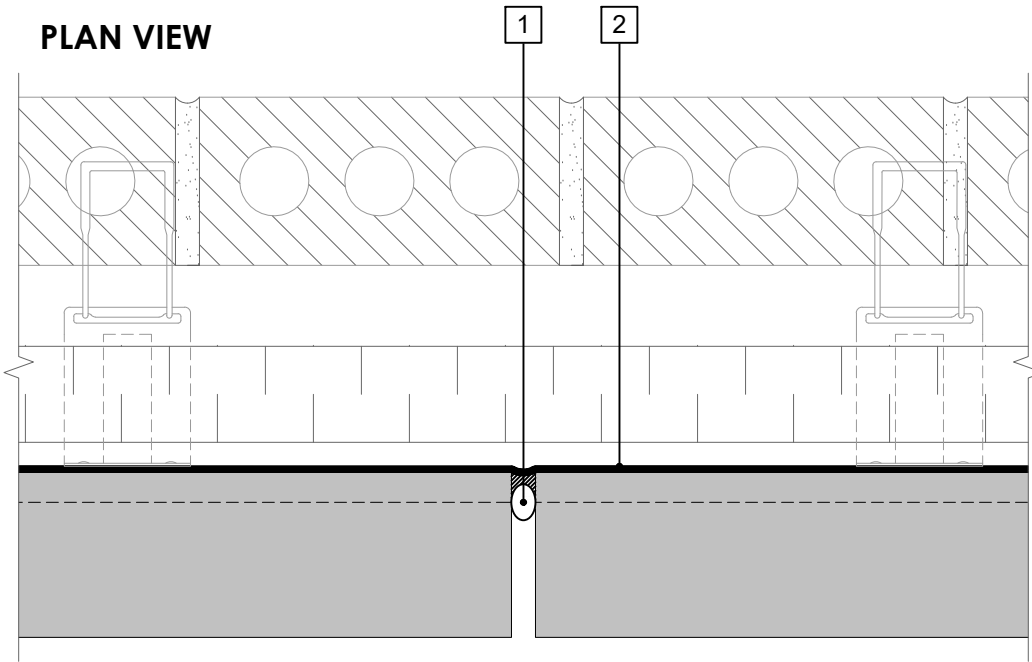
DRAWING: PWM-008

SCALE: 3" = 1'

EFFECTIVE DATE: 2020.05.21

SUPERCEDES: NEW

PLAN VIEW

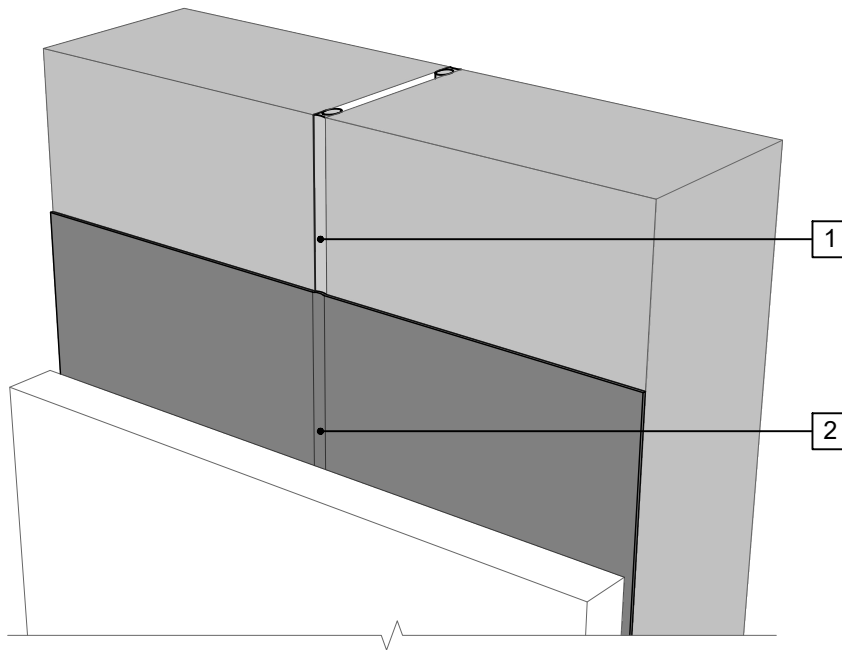


LEGEND

- 1. BACKER ROD AND COMPATIBLE SEALANT
- 2. PERM-A-BARRIER® WALL MEMBRANE

NOTE

- MAX 1/2-INCH JOINT CAPABLE OF MAXIMUM 10% MOVEMENT IN COMPRESSION AND ELONGATION



PERSPECTIVE VIEW

GENERAL NOTES

1. Detail not suitable for all climates. Avoiding excessive moisture accumulation in exterior walls is dependent on many factors including proper placement of insulation and water, air, and vapor control layers in the wall. Confirm membranes are suitable for project specific service temperatures. For assistance with exterior wall design, consult with a building science professional.
2. Install all GCP products in accordance with GCP Product Data Sheets and GCP recommendations.
3. GCP products are indicated in the detail legend in **BOLDFACE** font. Detail components by others are indicated in GRAY FONT. Install components per manufacturer and project specific requirements.

Refer to air barrier system product data sheet for acceptable SELF-ADHERED FLASHING products.

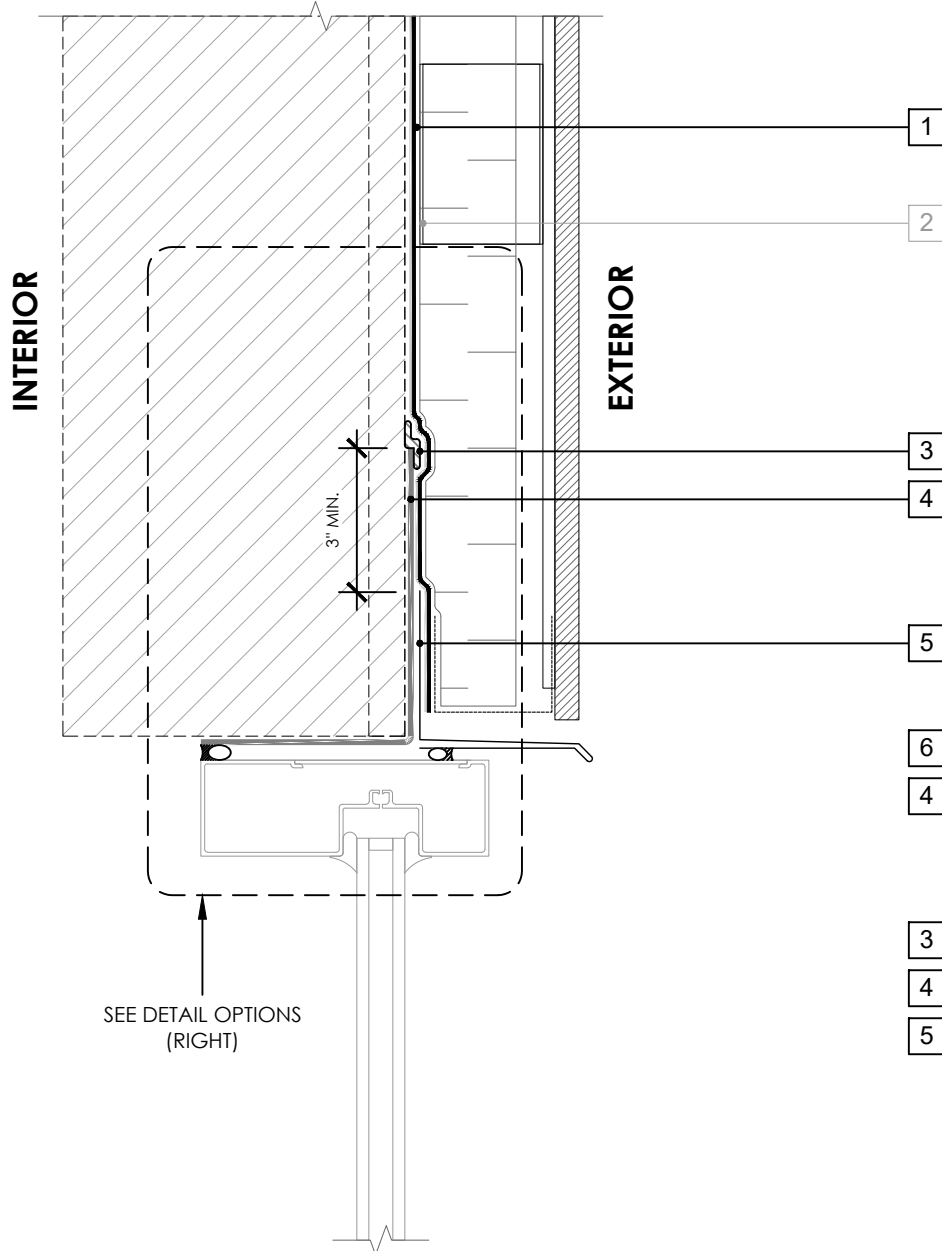


**CONTROL JOINT DETAIL -
MASONRY CLADDING**

**PERM-A-BARRIER® WALL
MEMBRANE**

DRAWING:	PWM-009
SCALE:	3" = 1'
EFFECTIVE DATE:	2020.05.21
SUPERCEDES:	NEW

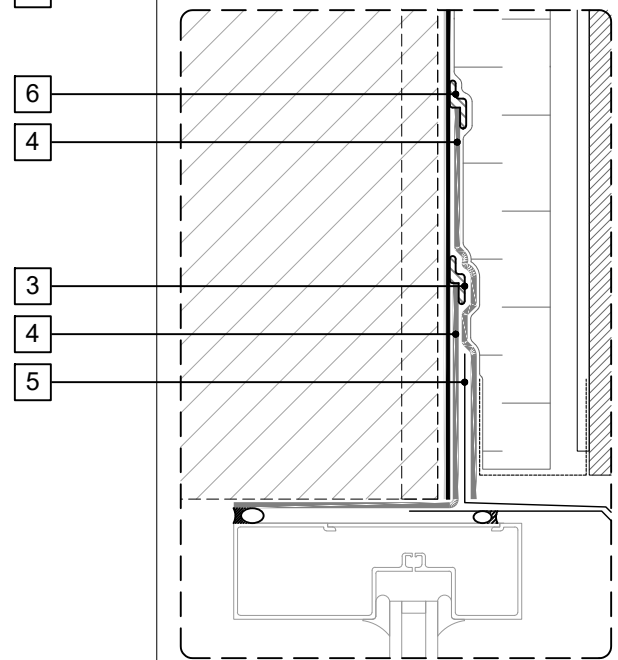
OPTION 1



LEGEND

1. **PERM-A-BARRIER® WALL MEMBRANE**
2. CLADDING ATTACHMENT - CONFIRM DETAILING REQUIREMENTS WITH THE GCPAT REPRESENTATIVE
3. **BITUTHENE MASTIC, BITUTHENE LIQUID MEMBRANE, OR GCP APPROVED SEALANT - 1-INCH TROWELED BEAD**
4. **PERM-A-BARRIER® SELF-ADHERED FLASHING***
5. SHEET METAL FLASHING PER ARCH
6. **PERM-A-BARRIER® S100, PERM-A-BARRIER® LIQUID FLASHING, BITUTHENE MASTIC, OR BITUTHENE LIQUID MEMBRANE - 1-INCH TROWELED BEAD**

OPTION 2



GENERAL NOTES

1. Detail not suitable for all climates. Avoiding excessive moisture accumulation in exterior walls is dependent on many factors including proper placement of insulation and water, air, and vapor control layers in the wall. Confirm membranes are suitable for project specific service temperatures. For assistance with exterior wall design, consult with a building science professional.
2. Install all GCP products in accordance with GCP Product Data Sheets and GCP recommendations.
3. GCP products are indicated in the detail legend in **BOLDFACE** font. Detail components by others are indicated in GRAY FONT. Install components per manufacturer and project specific requirements.

Refer to air barrier system product data sheet for acceptable SELF-ADHERED FLASHING products.



WINDOW HEAD DETAIL - NON-MASONRY CLADDING

PERM-A-BARRIER® WALL
MEMBRANE

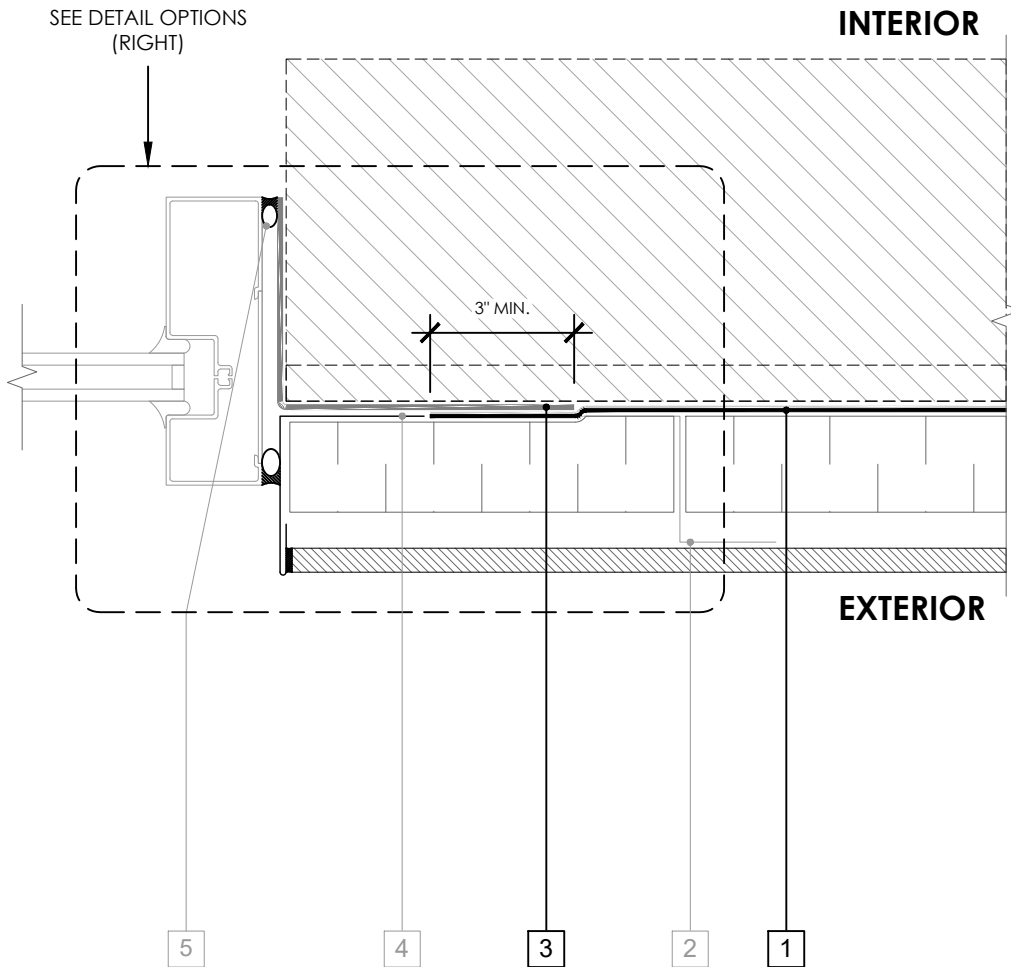
DRAWING: PWM-010

SCALE: 3" = 1'

EFFECTIVE DATE: 2020.05.21

SUPERCEDES: NEW

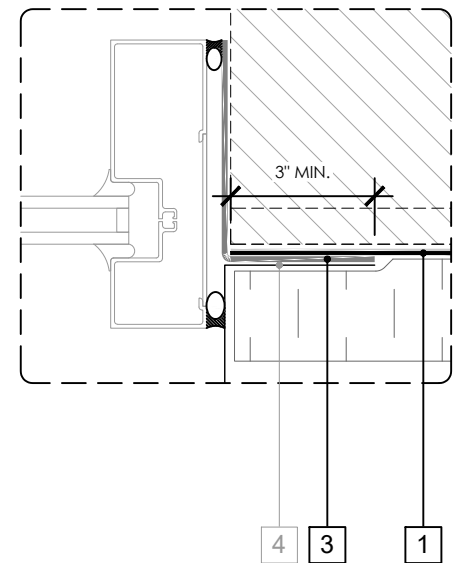
OPTION 1



LEGEND

1. **PERM-A-BARRIER® WALL MEMBRANE**
2. CLADDING ATTACHMENT - CONFIRM DETAILING REQUIREMENTS WITH THE GCPAT REPRESENTATIVE
3. **PERM-A-BARRIER® SELF-ADHERED FLASHING***
4. SHEET METAL FLASHING PER ARCH
5. INTERIOR AIR SEALANT OVER BACKER ROD

OPTION 2



GENERAL NOTES

1. Detail not suitable for all climates. Avoiding excessive moisture accumulation in exterior walls is dependent on many factors including proper placement of insulation and water, air, and vapor control layers in the wall. Confirm membranes are suitable for project specific service temperatures. For assistance with exterior wall design, consult with a building science professional.
2. Install all GCP products in accordance with GCP Product Data Sheets and GCP recommendations.
3. GCP products are indicated in the detail legend in **BOLDFACE** font. Detail components by others are indicated in GRAY FONT. Install components per manufacturer and project specific requirements.

Refer to air barrier system product data sheet for acceptable SELF-ADHERED FLASHING products.

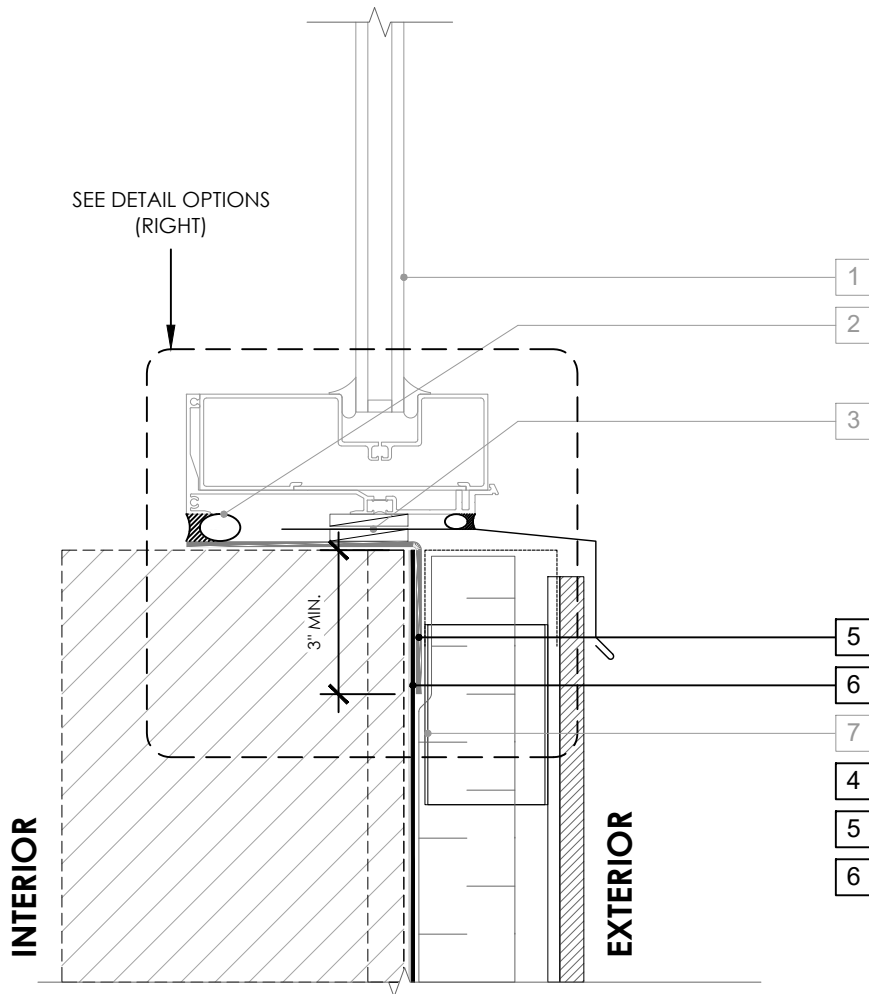


WINDOW JAMB DETAIL - NON-MASONRY CLADDING

PERM-A-BARRIER® WALL
MEMBRANE

DRAWING:	PWM-011
SCALE:	3" = 1'
EFFECTIVE DATE:	2020.05.21
SUPERCEDES:	NEW

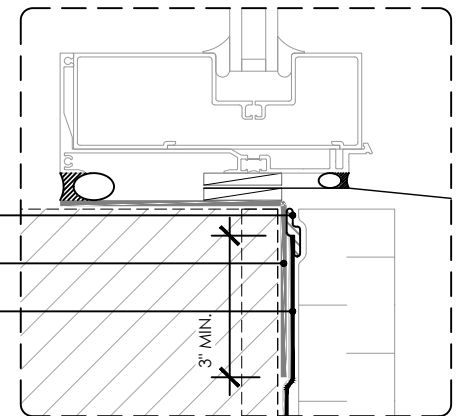
OPTION 1



LEGEND

1. NON-FLANGED WINDOW SYSTEM
2. INTERIOR AIR SEALANT OVER BACKER ROD
3. SHEET METAL FLASHING SANDWICHED BETWEEN INTERMITTENT SHIMS
4. **PERM-A-BARRIER® S100, PERM-A-BARRIER® LIQUID FLASHING, BITUTHENE MASTIC, OR BITUTHENE LIQUID MEMBRANE - 1-INCH TROWELED BEAD**
5. **PERM-A-BARRIER® SELF-ADHERED FLASHING***
6. **PERM-A-BARRIER® WALL MEMBRANE**
7. CLADDING ATTACHMENT - CONFIRM DETAILING REQUIREMENTS WITH THE GCPAT REPRESENTATIVE

OPTION 2



GENERAL NOTES

1. Detail not suitable for all climates. Avoiding excessive moisture accumulation in exterior walls is dependent on many factors including proper placement of insulation and water, air, and vapor control layers in the wall. Confirm membranes are suitable for project specific service temperatures. For assistance with exterior wall design, consult with a building science professional.
2. Install all GCP products in accordance with GCP Product Data Sheets and GCP recommendations.
3. GCP products are indicated in the detail legend in **BOLDFACE** font. Detail components by others are indicated in GRAY FONT. Install components per manufacturer and project specific requirements.

Refer to air barrier system product data sheet for acceptable SELF-ADHERED FLASHING products.



WINDOW SILL DETAIL - NON-MASONRY CLADDING

PERM-A-BARRIER® WALL
MEMBRANE

DRAWING: PWM-012

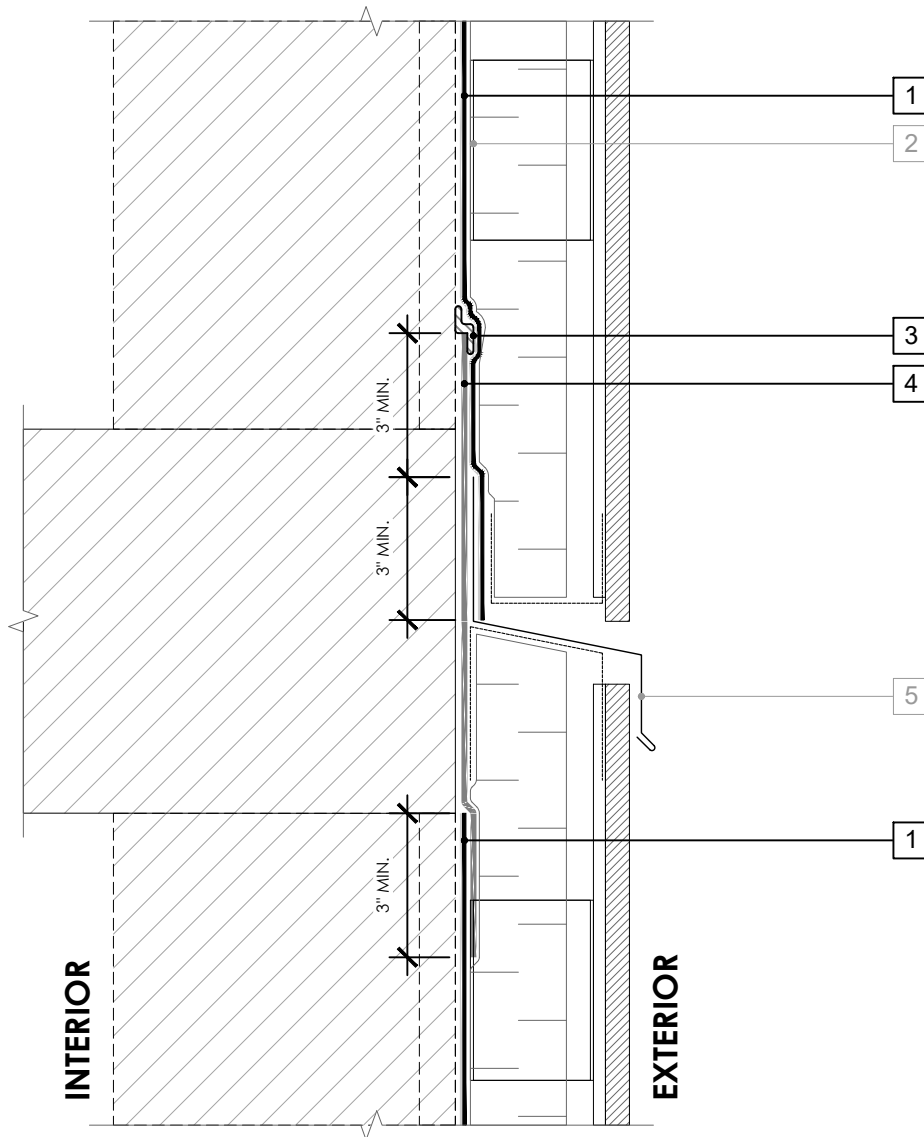
SCALE: 3" = 1'

EFFECTIVE DATE: 2020.05.21

SUPERCEDES: NEW

LEGEND

1. **PERM-A-BARRIER® WALL MEMBRANE**
2. CLADDING ATTACHMENT - CONFIRM DETAILING REQUIREMENTS WITH THE GCPAT REPRESENTATIVE
3. **BITUTHENE MASTIC, BITUTHENE LIQUID MEMBRANE, OR GCP APPROVED SEALANT - 1-INCH TROWELED BEAD**
4. **PERM-A-BARRIER® SELF-ADHERED FLASHING***
5. SHEET METAL FLASHING PER ARCH



GENERAL NOTES

1. Detail not suitable for all climates. Avoiding excessive moisture accumulation in exterior walls is dependent on many factors including proper placement of insulation and water, air, and vapor control layers in the wall. Confirm membranes are suitable for project specific service temperatures. For assistance with exterior wall design, consult with a building science professional.
2. Install all GCP products in accordance with GCP Product Data Sheets and GCP recommendations.
3. GCP products are indicated in the detail legend in **BOLDFACE** font. Detail components by others are indicated in GRAY FONT. Install components per manufacturer and project specific requirements.

Refer to air barrier system product data sheet for acceptable SELF-ADHERED FLASHING products.



FLOOR LINE DETAIL - NON-MASONRY CLADDING

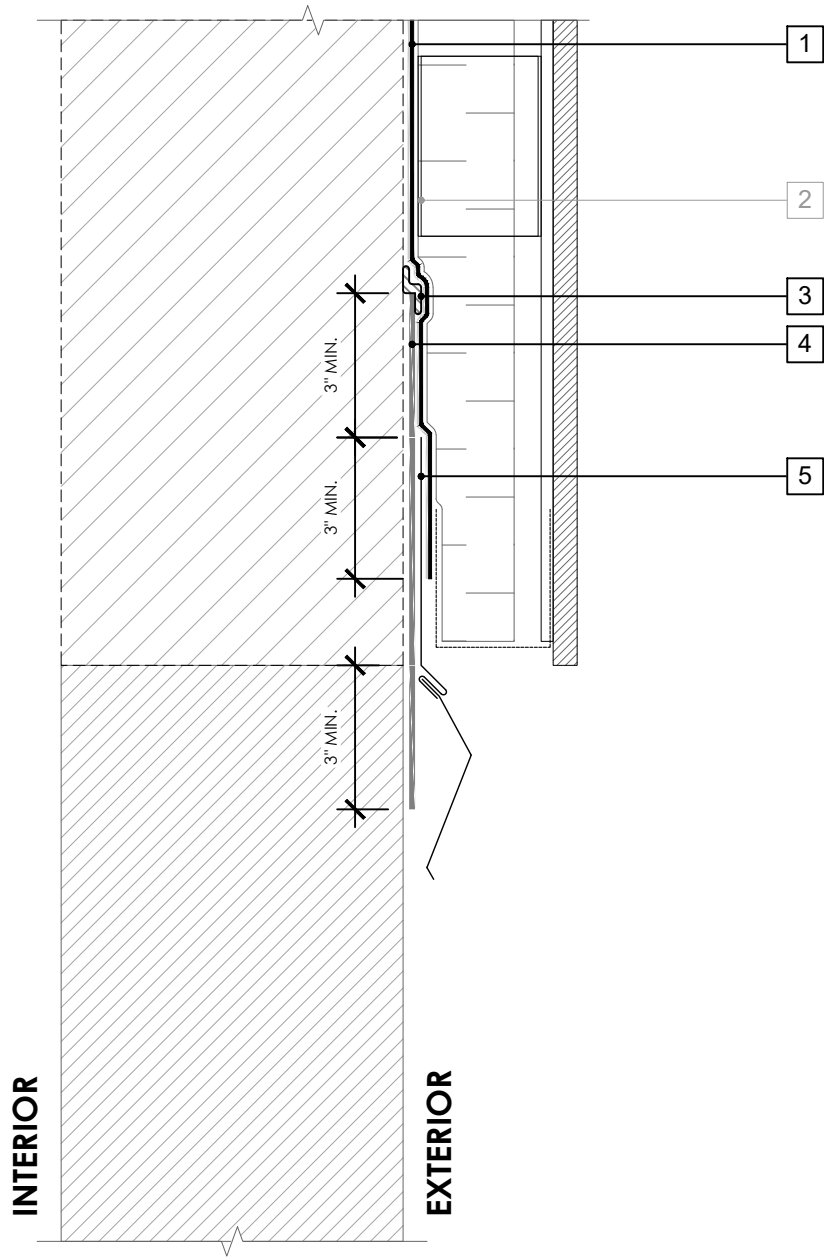
PERM-A-BARRIER® WALL
MEMBRANE

DRAWING: PWM-013

SCALE: 3" = 1'

EFFECTIVE DATE: 2020.05.21

SUPERCEDES: NEW



LEGEND

1. **PERM-A-BARRIER® WALL MEMBRANE**
2. CLADDING ATTACHMENT - CONFIRM DETAILING REQUIREMENTS WITH THE GCPAT REPRESENTATIVE
3. **BITUTHENE MASTIC, BITUTHENE LIQUID MEMBRANE, OR GCP APPROVED SEALANT - 1-INCH TROWELED BEAD**
4. **PERM-A-BARRIER® SELF-ADHERED FLASHING***
5. TWO-PIECE SHEET METAL FLASHING PER ARCH

NOTE

- CONFIRM MAXIMUM SERVICE TEMPERATURE OF PERM-A-BARRIER PRODUCTS DIRECTLY UNDER EXPOSED METAL FLASHING

GENERAL NOTES

1. Detail not suitable for all climates. Avoiding excessive moisture accumulation in exterior walls is dependent on many factors including proper placement of insulation and water, air, and vapor control layers in the wall. Confirm membranes are suitable for project specific service temperatures. For assistance with exterior wall design, consult with a building science professional.
2. Install all GCP products in accordance with GCP Product Data Sheets and GCP recommendations.
3. GCP products are indicated in the detail legend in **BOLDFACE** font. Detail components by others are indicated in GRAY FONT. Install components per manufacturer and project specific requirements.

Refer to air barrier system product data sheet for acceptable SELF-ADHERED FLASHING products.



CONCRETE STEM WALL DETAIL - NON-MASONRY CLADDING

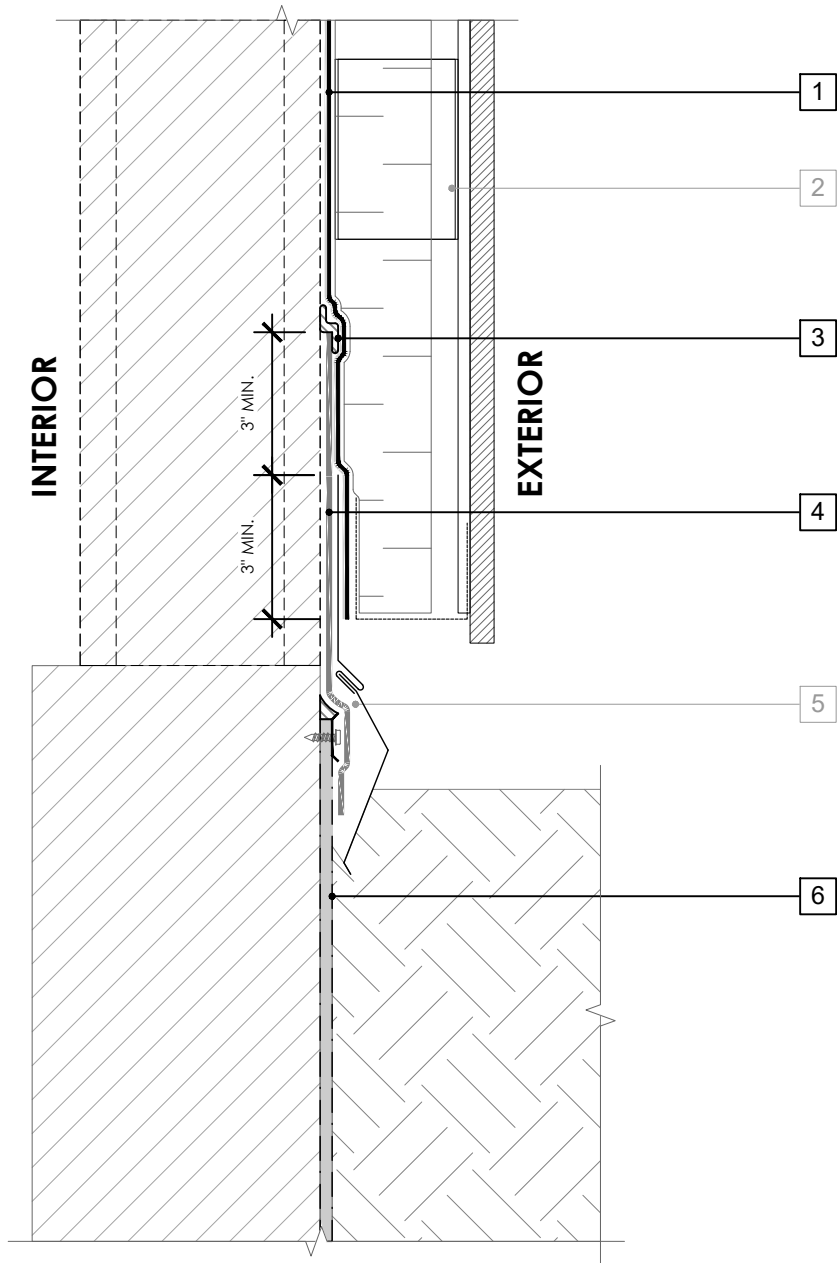
PERM-A-BARRIER® WALL
MEMBRANE

DRAWING: PWM-014

SCALE: 3" = 1'

EFFECTIVE DATE: 2020.05.21

SUPERCEDES: NEW



LEGEND

1. **PERM-A-BARRIER® WALL MEMBRANE**
2. CLADDING ATTACHMENT - CONFIRM DETAILING REQUIREMENTS WITH THE GCPAT REPRESENTATIVE
3. **BITUTHENE MASTIC, BITUTHENE LIQUID MEMBRANE, OR GCP APPROVED SEALANT - 1-INCH TROWELED BEAD**
4. **PERM-A-BARRIER® SELF-ADHERED FLASHING***
5. TWO-PIECE SHEET METAL FLASHING PER ARCH
6. **BELOW GRADE WATERPROOFING SYSTEM - SEE GCPAT.COM**

GENERAL NOTES

1. Detail not suitable for all climates. Avoiding excessive moisture accumulation in exterior walls is dependent on many factors including proper placement of insulation and water, air, and vapor control layers in the wall. Confirm membranes are suitable for project specific service temperatures. For assistance with exterior wall design, consult with a building science professional.
2. Install all GCP products in accordance with GCP Product Data Sheets and GCP recommendations.
3. GCP products are indicated in the detail legend in **BOLDFACE** font. Detail components by others are indicated in GRAY FONT. Install components per manufacturer and project specific requirements.

Refer to air barrier system product data sheet for acceptable SELF-ADHERED FLASHING products.



BASE-OF-WALL AT GRADE DETAIL - NON-MASONRY CLADDING

PERM-A-BARRIER® WALL
MEMBRANE

DRAWING: PWM-015

SCALE: 3" = 1'

EFFECTIVE DATE: 2020.05.21

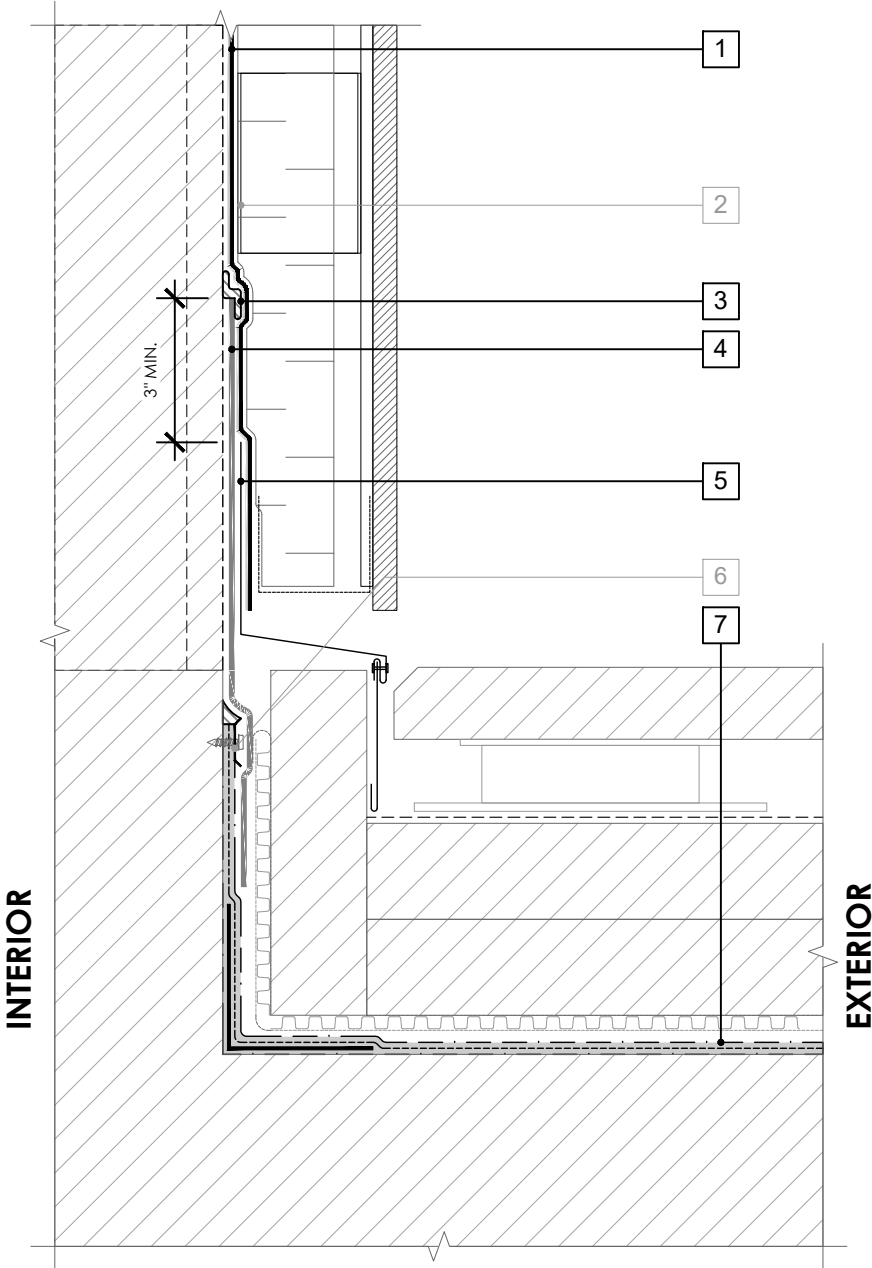
SUPERCEDES: NEW

LEGEND

- 1. **PERM-A-BARRIER® WALL MEMBRANE**
- 2. CLADDING ATTACHMENT - CONFIRM DETAILING REQUIREMENTS WITH THE GCPAT REPRESENTATIVE
- 3. **BITUTHENE MASTIC, BITUTHENE LIQUID MEMBRANE, OR GCP APPROVED SEALANT - 1-INCH TROWEED BEAD**
- 4. **PERM-A-BARRIER® SELF-ADHERED FLASHING***
- 5. SHEET METAL FLASHING PER ARCH
- 6. TERMINATION PER HORIZONTAL WATERPROOFING SYSTEM MANUFACTURER
- 7. **HORIZONTAL WATERPROOFING SYSTEM - SEE GCPAT.COM**

NOTE

- CONSULT GCP FOR HORIZONTAL WATERPROOFING COMPATIBILITY AND CONNECTION



GENERAL NOTES

- 1. Detail not suitable for all climates. Avoiding excessive moisture accumulation in exterior walls is dependent on many factors including proper placement of insulation and water, air, and vapor control layers in the wall. Confirm membranes are suitable for project specific service temperatures. For assistance with exterior wall design, consult with a building science professional.
- 2. Install all GCP products in accordance with GCP Product Data Sheets and GCP recommendations.
- 3. GCP products are indicated in the detail legend in **BOLDFACE** font. Detail components by others are indicated in GRAY FONT. Install components per manufacturer and project specific requirements.

Refer to air barrier system product data sheet for acceptable SELF-ADHERED FLASHING products.



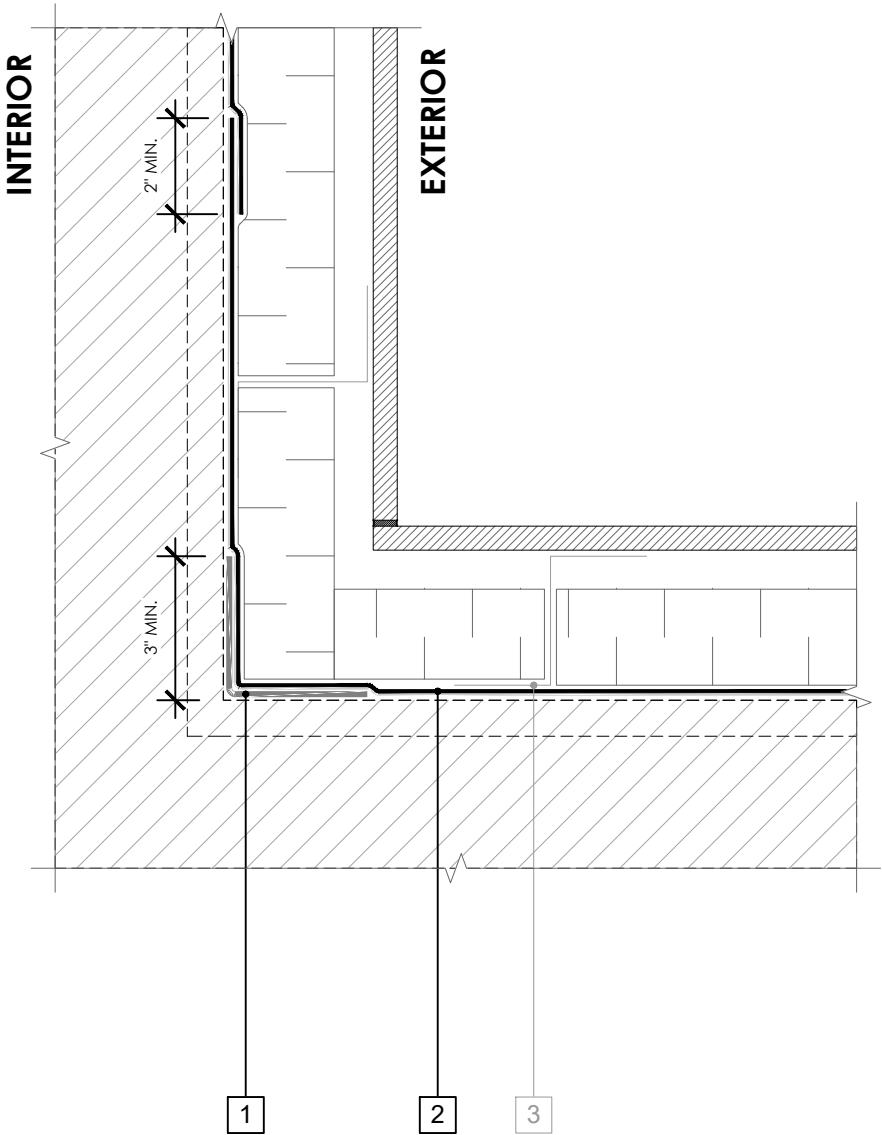
**BASE-OF-WALL DETAIL -
NON-MASONRY CLADDING**

**PERM-A-BARRIER® WALL
MEMBRANE**

DRAWING:	PWM-016
SCALE:	3" = 1'
EFFECTIVE DATE:	2020.05.21
SUPERCEDES:	NEW

LEGEND

- 1. **PERM-A-BARRIER®
SELF-ADHERED FLASHING*.
PRIME SUBSTRATE WHERE
REQUIRED**
- 2. **PERM-A-BARRIER® WALL
MEMBRANE**
- 3. CLADDING ATTACHMENT -
DETAIL PER GCPAT
REQUIREMENTS



GENERAL NOTES

- 1. Detail not suitable for all climates. Avoiding excessive moisture accumulation in exterior walls is dependent on many factors including proper placement of insulation and water, air, and vapor control layers in the wall. Confirm membranes are suitable for project specific service temperatures. For assistance with exterior wall design, consult with a building science professional.
- 2. Install all GCP products in accordance with GCP Product Data Sheets and GCP recommendations.
- 3. GCP products are indicated in the detail legend in **BOLDFACE** font. Detail components by others are indicated in GRAY FONT. Install components per manufacturer and project specific requirements.

Refer to air barrier system product data sheet for acceptable SELF-ADHERED FLASHING products.



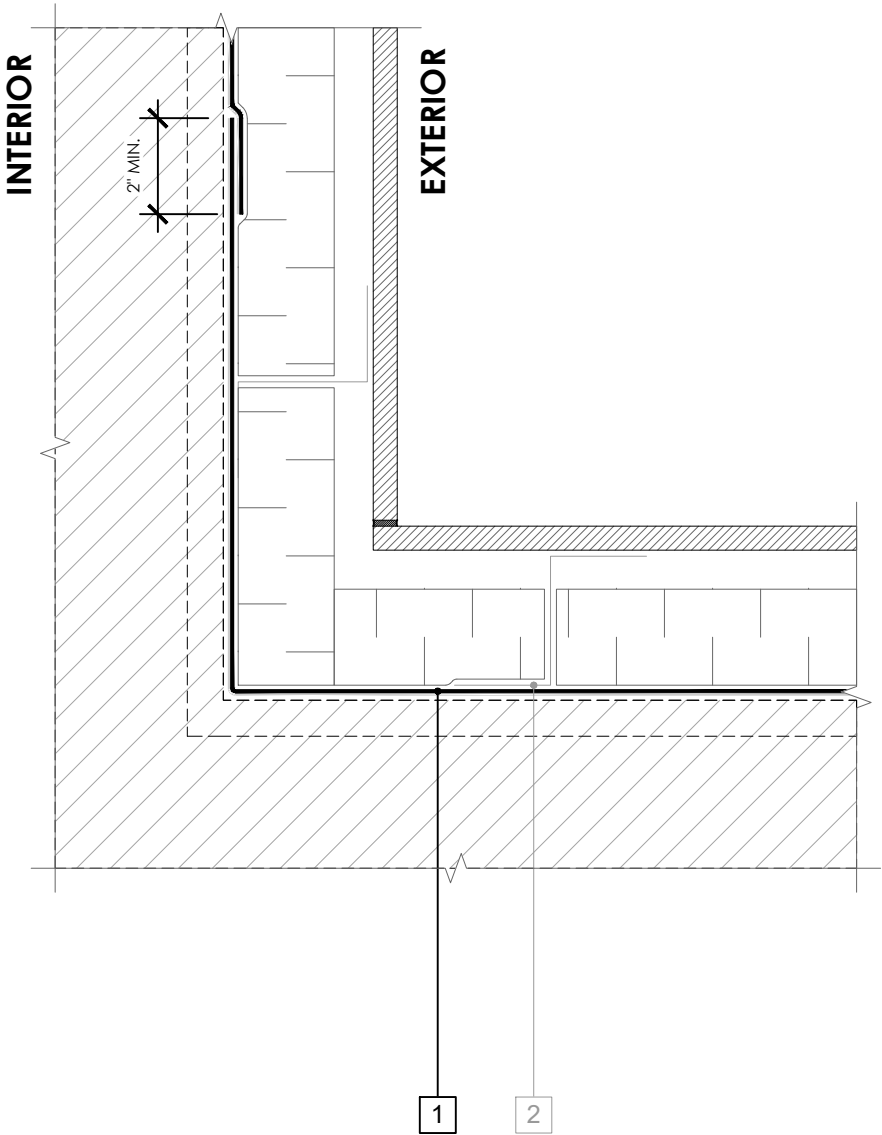
**INSIDE CORNER DETAIL -
NON-MASONRY CLADDING**

**PERM-A-BARRIER® WALL
MEMBRANE**

DRAWING:	PWM-017
SCALE:	3" = 1'
EFFECTIVE DATE:	2020.05.21
SUPERCEDES:	NEW

LEGEND

- 1. **PERM-A-BARRIER® WALL MEMBRANE**
- 2. CLADDING ATTACHMENT - DETAIL PER GCPAT REQUIREMENTS



GENERAL NOTES

- 1. Detail not suitable for all climates. Avoiding excessive moisture accumulation in exterior walls is dependent on many factors including proper placement of insulation and water, air, and vapor control layers in the wall. Confirm membranes are suitable for project specific service temperatures. For assistance with exterior wall design, consult with a building science professional.
- 2. Install all GCP products in accordance with GCP Product Data Sheets and GCP recommendations.
- 3. GCP products are indicated in the detail legend in **BOLDFACE** font. Detail components by others are indicated in GRAY FONT. Install components per manufacturer and project specific requirements.

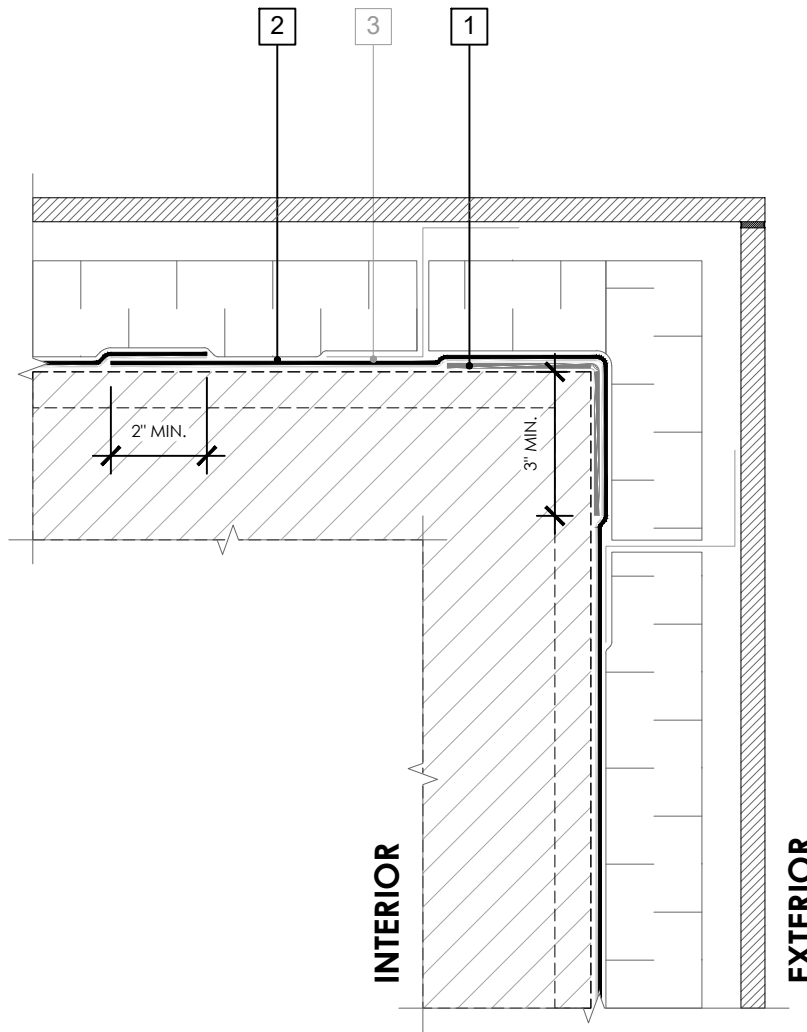
Refer to air barrier system product data sheet for acceptable SELF-ADHERED FLASHING products.



**INSIDE CORNER DETAIL (ALTERNATE) -
NON-MASONRY CLADDING**

**PERM-A-BARRIER® WALL
MEMBRANE**

DRAWING:	PWM-017 (ALT)
SCALE:	3" = 1'
EFFECTIVE DATE:	2020.05.21
SUPERCEDES:	NEW



LEGEND

1. **PERM-A-BARRIER®** DETAIL MEMBRANE, NPS DETAIL MEMBRANE, ALUMINUM FLASHING, OR WALL FLASHING. PRIME SUBSTRATE WHERE REQUIRED
2. **PERM-A-BARRIER®** WALL MEMBRANE
3. CLADDING ATTACHMENT - DETAIL PER GCPAT REQUIREMENTS

GENERAL NOTES

1. Detail not suitable for all climates. Avoiding excessive moisture accumulation in exterior walls is dependent on many factors including proper placement of insulation and water, air, and vapor control layers in the wall. Confirm membranes are suitable for project specific service temperatures. For assistance with exterior wall design, consult with a building science professional.
2. Install all GCP products in accordance with GCP Product Data Sheets and GCP recommendations.
3. GCP products are indicated in the detail legend in **BOLDFACE** font. Detail components by others are indicated in GRAY FONT. Install components per manufacturer and project specific requirements.

Refer to air barrier system product data sheet for acceptable SELF-ADHERED FLASHING products.



OUTSIDE CORNER DETAIL - NON-MASONRY CLADDING

PERM-A-BARRIER® WALL
MEMBRANE

DRAWING: PWM-018

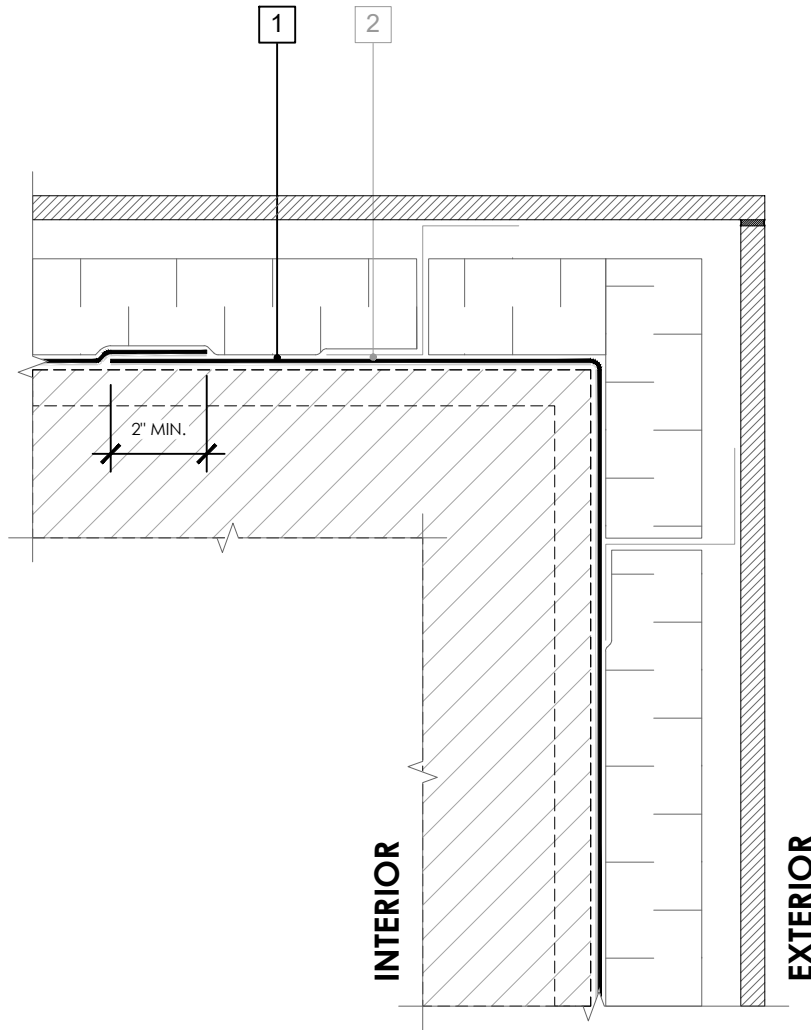
SCALE: 3" = 1'

EFFECTIVE DATE: 2020.05.21

SUPERCEDES: NEW

LEGEND

1. **PERM-A-BARRIER® WALL MEMBRANE**
2. CLADDING ATTACHMENT -
DETAIL PER GCPAT
REQUIREMENTS



GENERAL NOTES

1. Detail not suitable for all climates. Avoiding excessive moisture accumulation in exterior walls is dependent on many factors including proper placement of insulation and water, air, and vapor control layers in the wall. Confirm membranes are suitable for project specific service temperatures. For assistance with exterior wall design, consult with a building science professional.
2. Install all GCP products in accordance with GCP Product Data Sheets and GCP recommendations.
3. GCP products are indicated in the detail legend in **BOLDFACE** font. Detail components by others are indicated in GRAY FONT. Install components per manufacturer and project specific requirements.

Refer to air barrier system product data sheet for acceptable SELF-ADHERED FLASHING products.



OUTSIDE CORNER DETAIL (ALTERNATE) - NON-MASONRY CLADDING

PERM-A-BARRIER® WALL
MEMBRANE

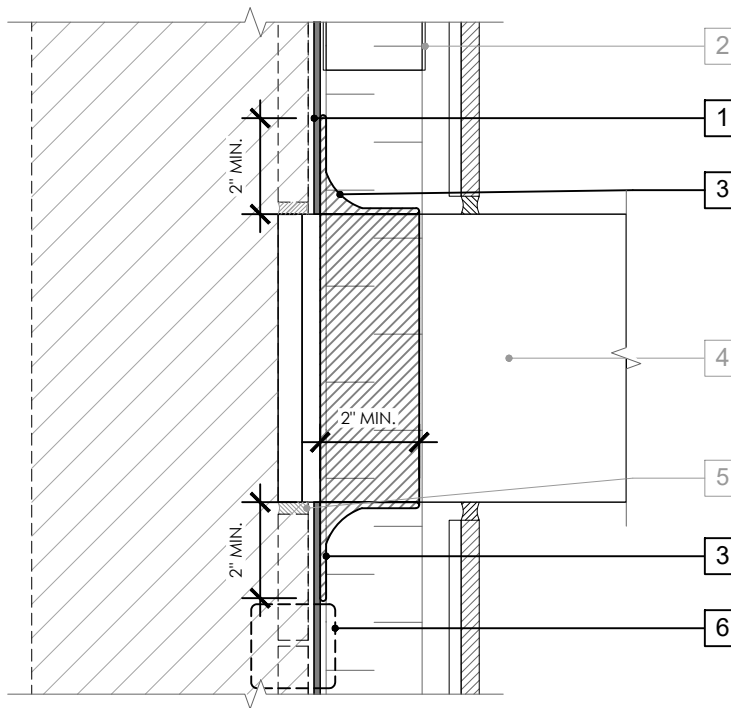
DRAWING: PWM-018 (ALT)

SCALE: 3" = 1'

EFFECTIVE DATE: 2020.05.21

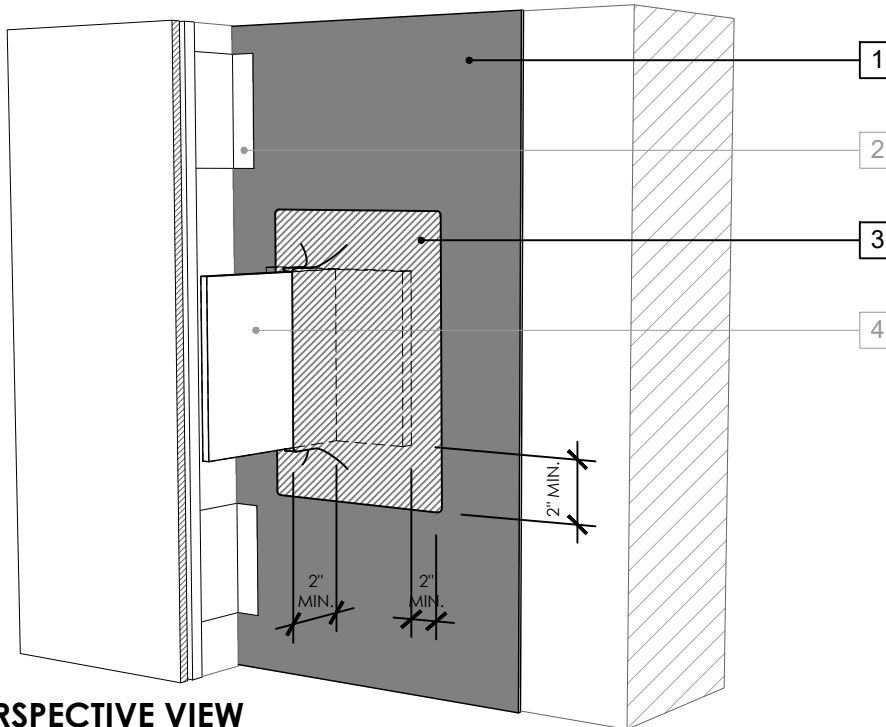
SUPERCEDES: NEW

SECTION VIEW



LEGEND

1. **PERM-A-BARRIER® WALL MEMBRANE**
2. CLADDING ATTACHMENT - CONFIRM DETAILING REQUIREMENTS WITH THE GCPAT REPRESENTATIVE
3. **PERM-A-BARRIER® S100, PERM-A-BARRIER® LIQUID FLASHING, BITUTHENE MASTIC, OR BITUTHENE LIQUID MEMBRANE - FLASHING AND CANT SEAL**
4. KNIFE PLATE PENETRATION
5. POLYURETHANE SEALANT OR NON-SHRINK GROUT PER BACKUP WALL TYPE
6. **JOINT TREATMENT PER DETAIL PWM-009**



PERSPECTIVE VIEW

GENERAL NOTES

1. Detail not suitable for all climates. Avoiding excessive moisture accumulation in exterior walls is dependent on many factors including proper placement of insulation and water, air, and vapor control layers in the wall. Confirm membranes are suitable for project specific service temperatures. For assistance with exterior wall design, consult with a building science professional.
2. Install all GCP products in accordance with GCP Product Data Sheets and GCP recommendations.
3. GCP products are indicated in the detail legend in **BOLDFACE** font. Detail components by others are indicated in GRAY FONT. Install components per manufacturer and project specific requirements.

Refer to air barrier system product data sheet for acceptable SELF-ADHERED FLASHING products.



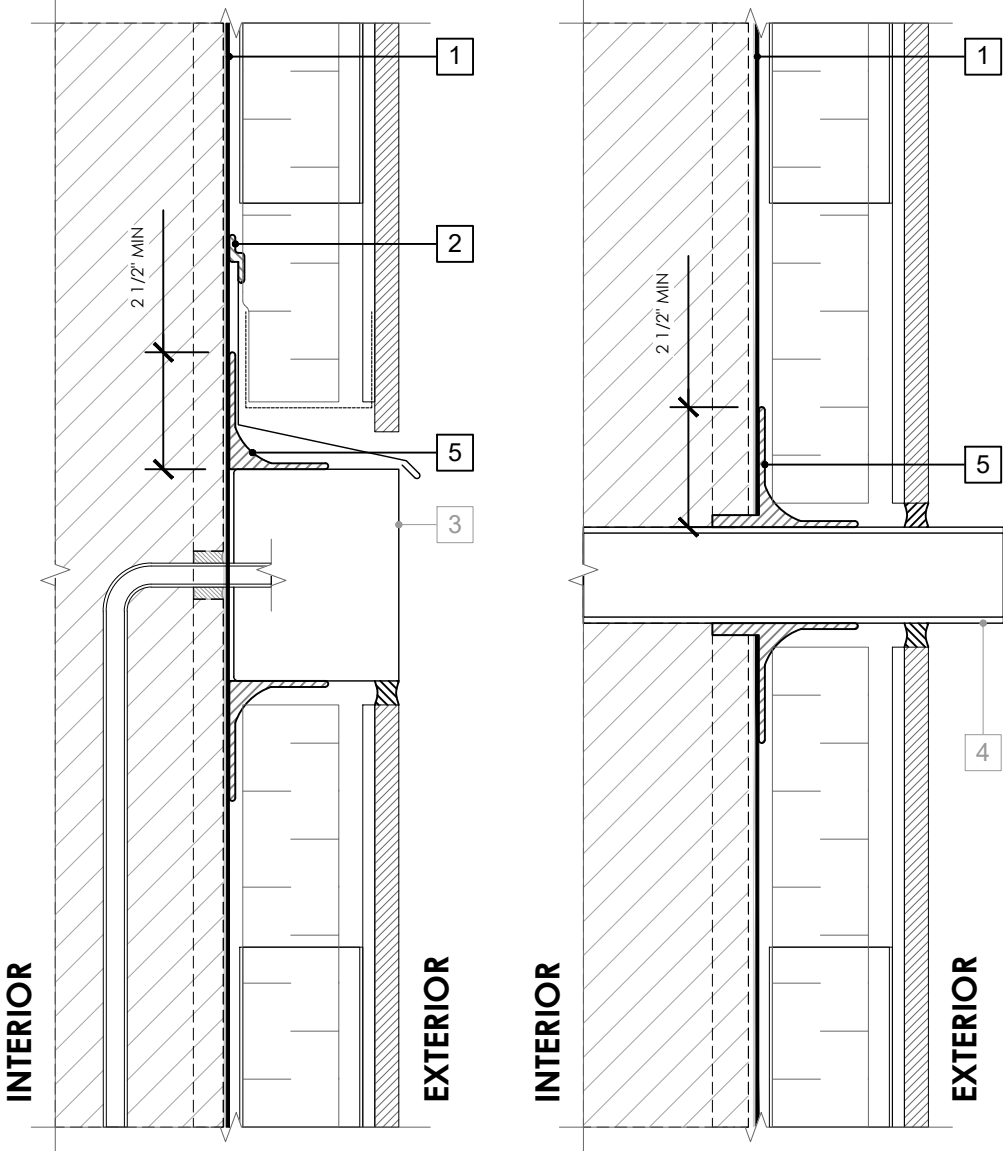
KNIFEPLATE PENETRATION DETAIL - NON-MASONRY CLADDING

PERM-A-BARRIER® WALL
MEMBRANE

DRAWING:	PWM-019
SCALE:	3" = 1'
EFFECTIVE DATE:	2020.05.21
SUPERCEDES:	NEW

LEGEND

- 1. **PERM-A-BARRIER® WALL MEMBRANE**
- 2. **PERM-A-BARRIER® S100, PERM-A-BARRIER® LIQUID FLASHING, BITUTHENE MASTIC, OR BITUTHENE LIQUID MEMBRANE - 1-INCH TROWELED BEAD**
- 3. AIR AND WATER TIGHT BOX AND PENETRATION
- 4. AIR AND WATER TIGHT PIPE OR DUCT PENETRATION
- 5. **PERM-A-BARRIER® S100, PERM-A-BARRIER® LIQUID FLASHING, BITUTHENE MASTIC, OR BITUTHENE LIQUID MEMBRANE - FLASHING AND CANT SEAL**



GENERAL NOTES

- 1. Detail not suitable for all climates. Avoiding excessive moisture accumulation in exterior walls is dependent on many factors including proper placement of insulation and water, air, and vapor control layers in the wall. Confirm membranes are suitable for project specific service temperatures. For assistance with exterior wall design, consult with a building science professional.
- 2. Install all GCP products in accordance with GCP Product Data Sheets and GCP recommendations.
- 3. GCP products are indicated in the detail legend in **BOLDFACE** font. Detail components by others are indicated in GRAY FONT. Install components per manufacturer and project specific requirements.

Refer to air barrier system product data sheet for acceptable SELF-ADHERED FLASHING products.

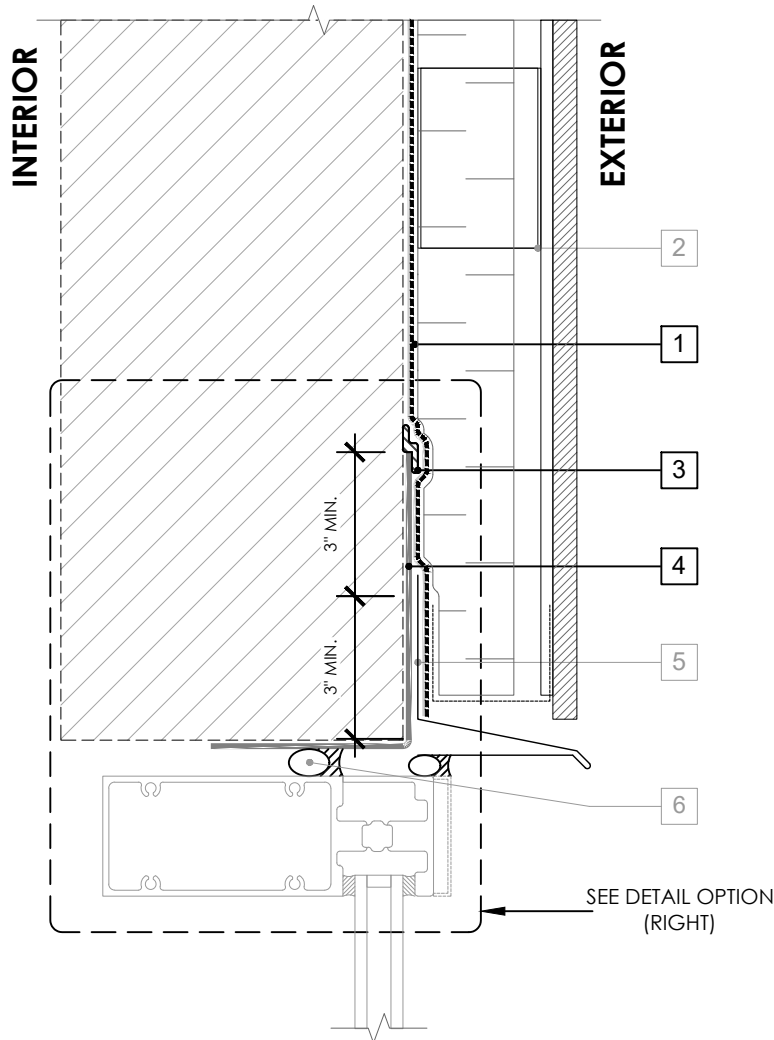


**PENETRATION DETAILS -
NON-MASONRY CLADDING**

**PERM-A-BARRIER® WALL
MEMBRANE**

DRAWING:	PWM-020
SCALE:	3" = 1'
EFFECTIVE DATE:	2020.05.21
SUPERCEDES:	NEW

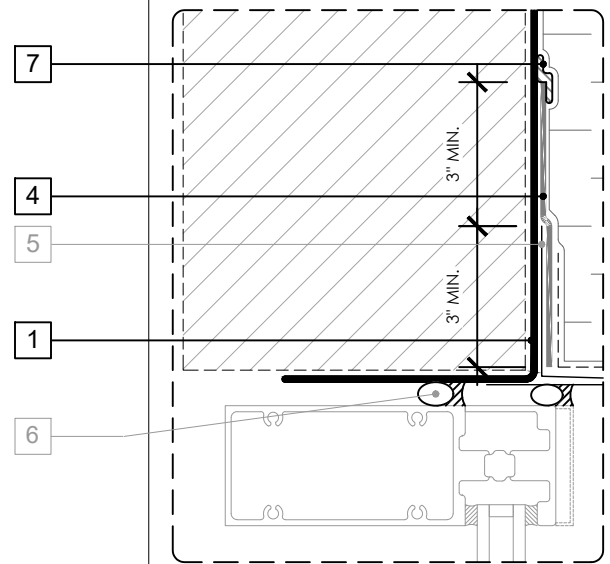
OPTION 1



LEGEND

1. **PERM-A-BARRIER® WALL MEMBRANE**
2. CLADDING ATTACHMENT -
CONFIRM DETAILING REQUIREMENTS
WITH THE GCPAT REPRESENTATIVE
3. **BITUTHENE MASTIC, BITUTHENE
LIQUID MEMBRANE, OR GCP
APPROVED SEALANT - 1-INCH
TROWELED BEAD**
4. **PERM-A-BARRIER® SELF-ADHERED
FLASHING***
5. SHEET METAL FLASHING PER ARCH
6. INTERIOR AIR SEALANT OVER
BACKER ROD
7. **PERM-A-BARRIER® S100,
PERM-A-BARRIER® LIQUID FLASHING,
BITUTHENE MASTIC, OR BITUTHENE
LIQUID MEMBRANE - 1-INCH
TROWELED BEAD**

OPTION 2



GENERAL NOTES

1. Detail not suitable for all climates. Avoiding excessive moisture accumulation in exterior walls is dependent on many factors including proper placement of insulation and water, air, and vapor control layers in the wall. Confirm membranes are suitable for project specific service temperatures. For assistance with exterior wall design, consult with a building science professional.
2. Install all GCP products in accordance with GCP Product Data Sheets and GCP recommendations.
3. GCP products are indicated in the detail legend in **BOLDFACE** font. Detail components by others are indicated in GRAY FONT. Install components per manufacturer and project specific requirements.

Refer to air barrier system product data sheet for acceptable SELF-ADHERED FLASHING products.

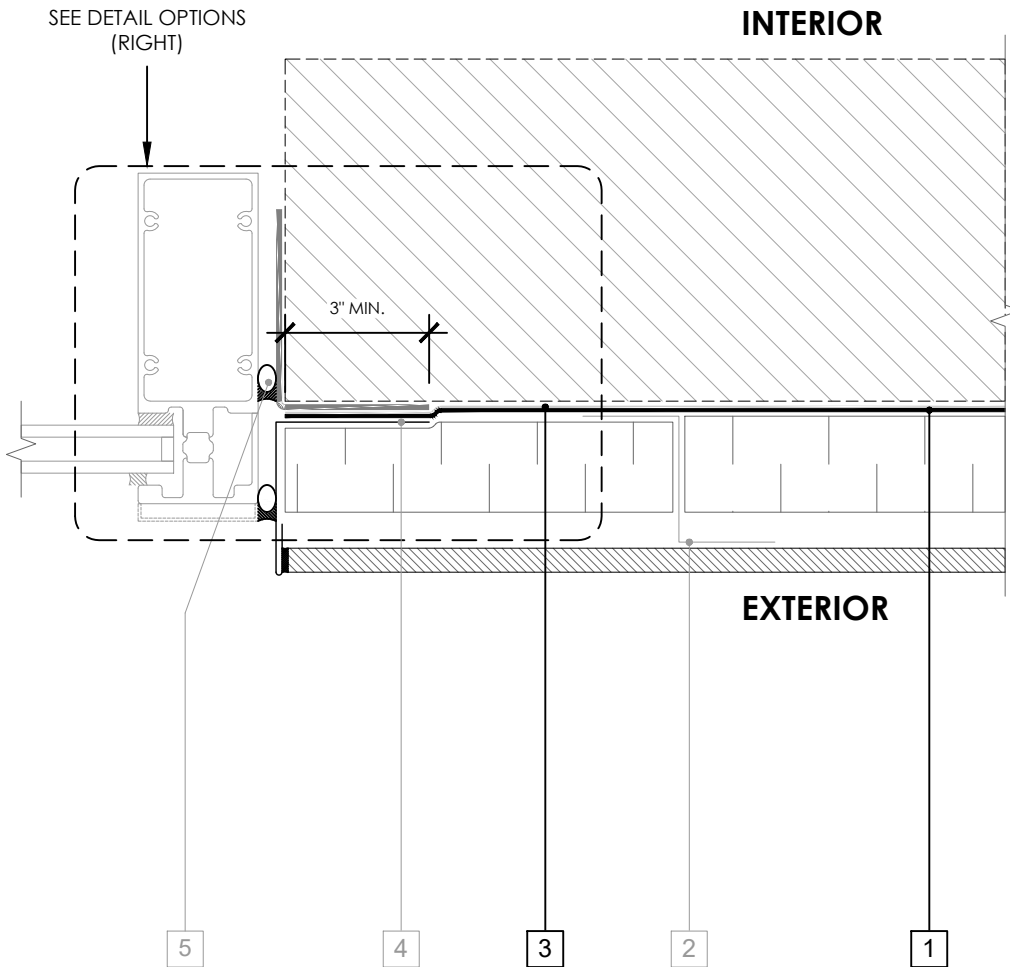


CURTAINWALL HEAD DETAIL

PERM-A-BARRIER® WALL MEMBRANE

DRAWING:	PWM-021
SCALE:	3" = 1'
EFFECTIVE DATE:	2020.05.21
SUPERCEDES:	NEW

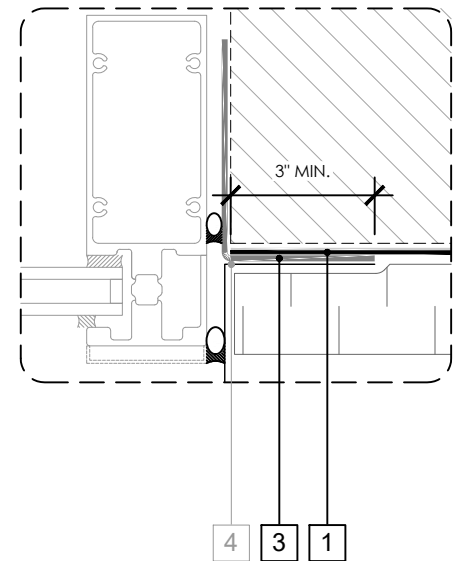
OPTION 1



LEGEND

1. **PERM-A-BARRIER® WALL MEMBRANE**
2. CLADDING ATTACHMENT -
CONFIRM DETAILING REQUIREMENTS
WITH THE GCPAT REPRESENTATIVE
3. **PERM-A-BARRIER® SELF-ADHERED
FLASHING***
4. SHEET METAL FLASHING PER ARCH
5. INTERIOR AIR SEALANT OVER
BACKER ROD

OPTION 2



GENERAL NOTES

1. Detail not suitable for all climates. Avoiding excessive moisture accumulation in exterior walls is dependent on many factors including proper placement of insulation and water, air, and vapor control layers in the wall. Confirm membranes are suitable for project specific service temperatures. For assistance with exterior wall design, consult with a building science professional.
2. Install all GCP products in accordance with GCP Product Data Sheets and GCP recommendations.
3. GCP products are indicated in the detail legend in **BOLDFACE** font. Detail components by others are indicated in GRAY FONT. Install components per manufacturer and project specific requirements.

Refer to air barrier system product data sheet for acceptable SELF-ADHERED FLASHING products.



CURTAINWALL JAMB DETAIL

PERM-A-BARRIER® WALL MEMBRANE

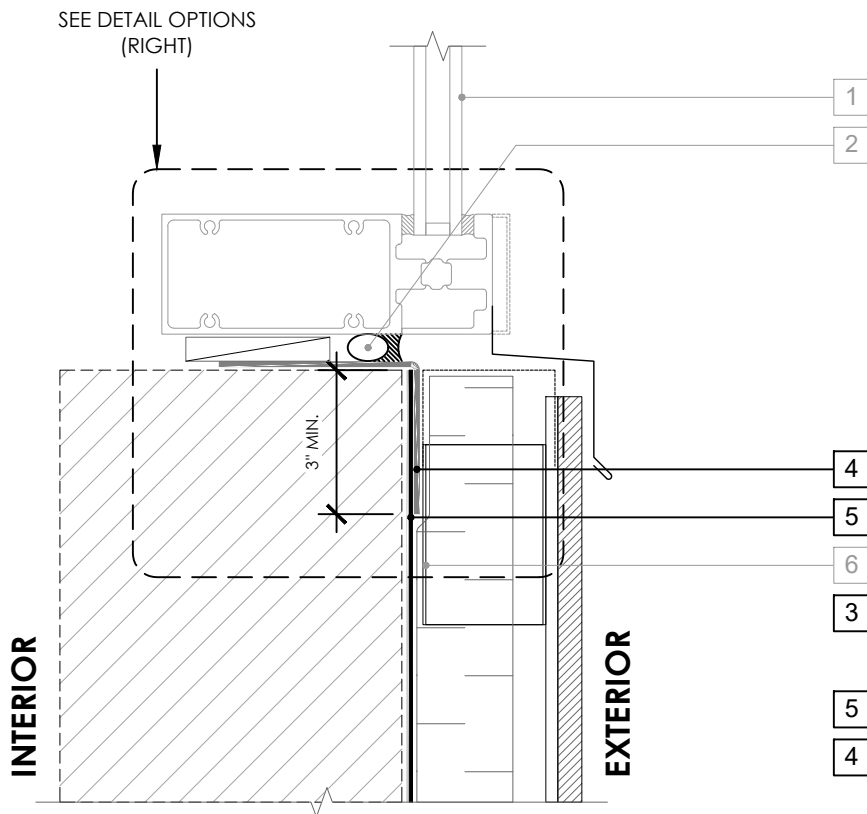
DRAWING: PWM-022

SCALE: 3" = 1'

EFFECTIVE DATE: 2020.05.21

SUPERCEDES: NEW

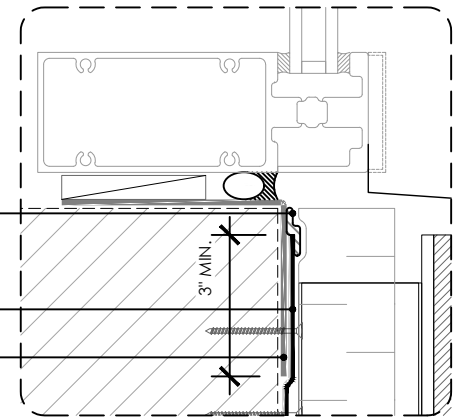
OPTION 1



LEGEND

1. CURTAINWALL SILL OVER MANUFACTURER'S STARTER TRACK
2. INTERIOR AIR SEALANT OVER BACKER ROD
3. **PERM-A-BARRIER® S100, PERM-A-BARRIER® LIQUID FLASHING, BITUTHENE MASTIC, OR BITUTHENE LIQUID MEMBRANE - 1-INCH TROWELED BEAD**
4. **PERM-A-BARRIER® SELF-ADHERED FLASHING***
5. **PERM-A-BARRIER® WALL MEMBRANE**
6. CLADDING ATTACHMENT - CONFIRM DETAILING REQUIREMENTS WITH THE GCPAT REPRESENTATIVE

OPTION 2



GENERAL NOTES

1. Detail not suitable for all climates. Avoiding excessive moisture accumulation in exterior walls is dependent on many factors including proper placement of insulation and water, air, and vapor control layers in the wall. Confirm membranes are suitable for project specific service temperatures. For assistance with exterior wall design, consult with a building science professional.
2. Install all GCP products in accordance with GCP Product Data Sheets and GCP recommendations.
3. GCP products are indicated in the detail legend in **BOLDFACE** font. Detail components by others are indicated in GRAY FONT. Install components per manufacturer and project specific requirements.

Refer to air barrier system product data sheet for acceptable SELF-ADHERED FLASHING products.



CURTAINWALL SILL DETAIL

PERM-A-BARRIER® WALL MEMBRANE

DRAWING: PWM-023

SCALE: 3" = 1'

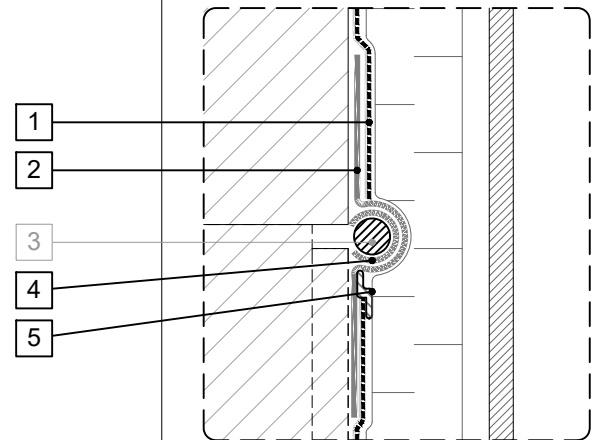
EFFECTIVE DATE: 2020.05.21

SUPERCEDES: NEW

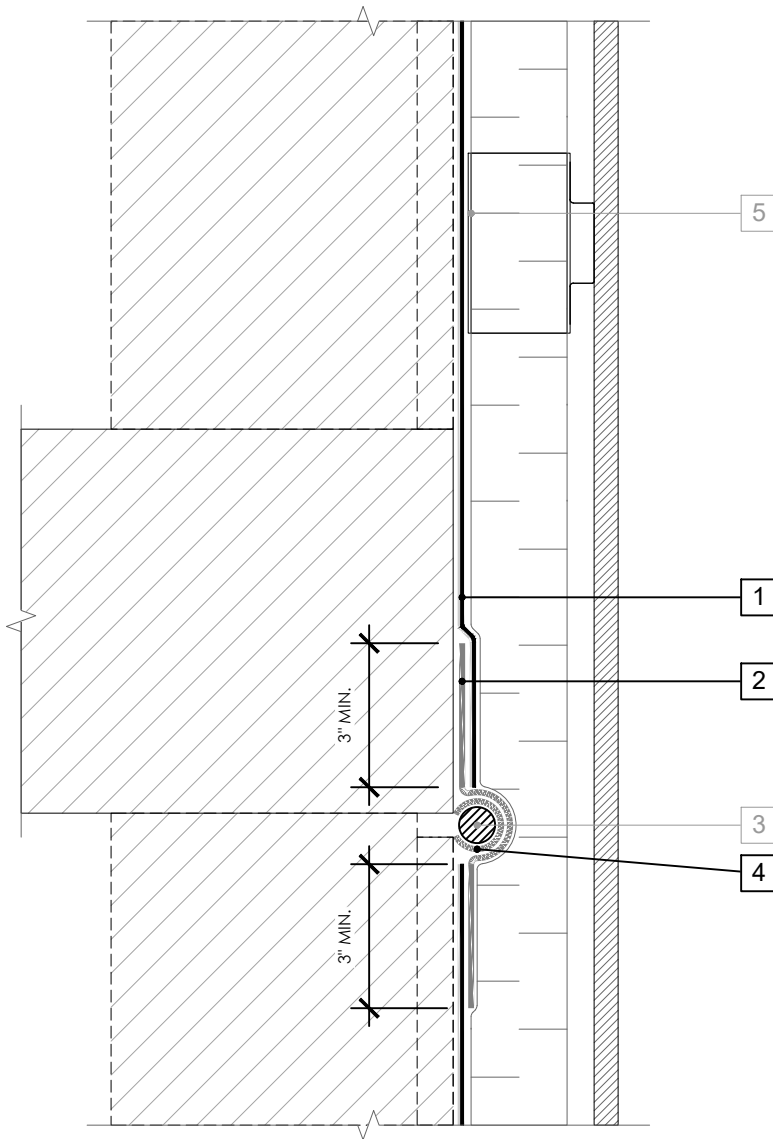
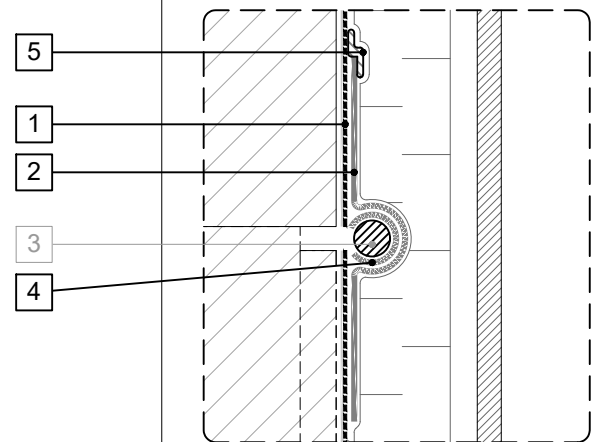
LEGEND

1. **PERM-A-BARRIER® WALL MEMBRANE**
2. **PERM-A-BARRIER® SELF-ADHERED FLASHING***
3. MINIMUM 3/4" BACKER ROD
4. **PERM-A-BARRIER DETAIL MEMBRANE INVERTED STRIP SUFFICIENT IN SIZE TO COVER BACKER ROD**
5. CLADDING ATTACHMENT, CONFIRM DETAILING REQUIREMENTS WITH THE GCPAT REPRESENTATIVE

OPTION 2



OPTION 3



GENERAL NOTES

1. Detail not suitable for all climates. Avoiding excessive moisture accumulation in exterior walls is dependent on many factors including proper placement of insulation and water, air, and vapor control layers in the wall. Confirm membranes are suitable for project specific service temperatures. For assistance with exterior wall design, consult with a building science professional.
2. Install all GCP products in accordance with GCP Product Data Sheets and GCP recommendations.
3. GCP products are indicated in the detail legend in **BOLDFACE** font. Detail components by others are indicated in GRAY FONT. Install components per manufacturer and project specific requirements.

Refer to air barrier system product data sheet for acceptable SELF-ADHERED FLASHING products.



DEFLECTION JOINT

PERM-A-BARRIER® WALL MEMBRANE

DRAWING: PWM-024

SCALE: 3" = 1'

EFFECTIVE DATE: 2020.05.21

SUPERCEDES: NEW