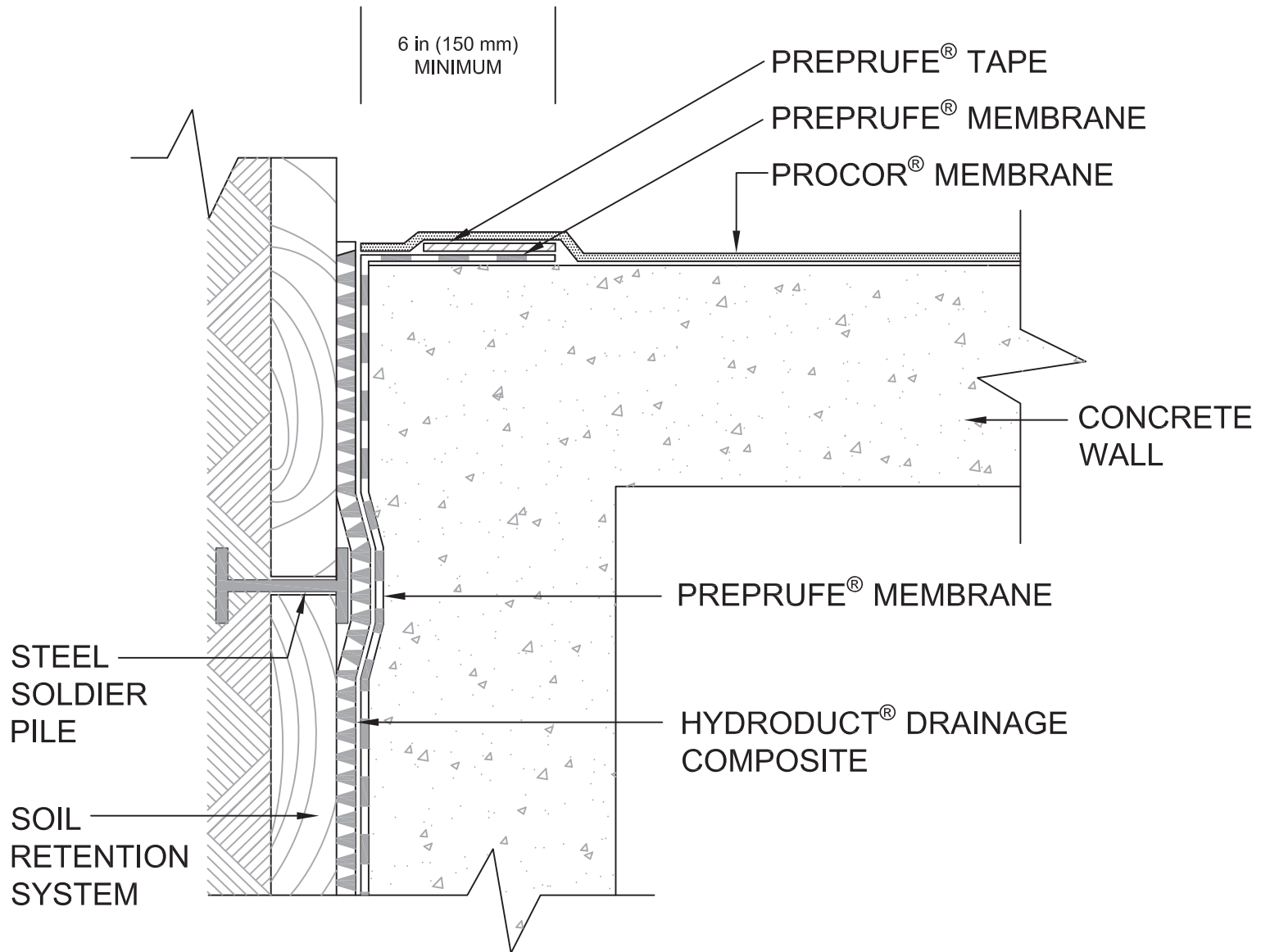


PLAN VIEW



**TIE INTO PREPRUFE® WALL
WATERPROOFING - PLAN VIEW**
PROCOR® WATERPROOFING SYSTEM

DRAWING: PRO 015

SCALE: Not to scale

EFFECTIVE DATE: 07/01/2016

SUPERCEDES: 04012015

Tie into Preprufe® Waterproofing

Plan View

Prior to Membrane Installation, Review the Procor® Data Sheet



Surface Prep

All surfaces must be structurally sound and free from spalled areas, loose aggregate, sharp protrusions or other matter that may hinder the adhesion or regularity of the membrane installation. The surface should also be free from frost, dirt, grease, oil or other contaminants as outlined in the Procor® Data Sheet section on Surface Preparation. Clean loose dust and dirt from the surface.

Detailing

1. Install Preprufe over the prepared vertical surface following the standard vertical application instructions.
2. Extend the Preprufe Membrane a minimum of 6 in (150 mm) beyond the end of the blind-side wall and terminate in formwork to allow for tie-in.
3. Once the wall is poured and cured, remove the formwork.
4. Apply Preprufe Tape at the termination of the Preprufe field membrane to ensure good adhesion with the Procor membrane.
5. Install the field membrane in accordance with the Procor Data Sheet section on Installation. Extend Procor completely over Preprufe Tape detail.

Special Notes

Procor membranes should not be used in areas where they will be permanently exposed to sunlight, weather or traffic. Protect membrane from sunlight as quickly as possible after installation.