

# INJECTO<sup>®</sup> Tube

## Groutable Hose Waterstop System

### Product Description

INJECTO<sup>®</sup> is an injectable waterstop system that provides a conduit for the placement of GCP approved chemical grouts. The 1/2" (12mm) permeable tube is installed before the concrete pour, but not injected until after the shrinkage associated with the curing concrete process is complete (a minimum 28-days cure; consult with GCP Applied Technologies). This allows the cracks to open fully before permanently sealing the interfaces and voids within construction joints, pipe penetrations, slurry walls and slab connections with chemical grout.



Figure 1. Injecto Tube Kit

### Applications

- Sealing cold and construction joints
- Sealing pipe penetrations and details
- Sealing joints between slurry walls and slabs

**INJECTO Tube** may only be used with GCP approved chemical grouts. The various grouts available depend on site conditions and other requirements. Contact your local sales representative or technical service consultant to determine the best grout needed for your application.

### Product Advantages

- Fast, simple installation
- No special tools required
- Low pressure injection
- Permanent seal after injection
- Injectable anytime after concrete cure
- **INJECTO<sup>®</sup>** System Warranty

### Packaging & Handling

INJECTO Tube is supplied in 100 ft. kits to allow the system to be cut to length on site. The maximum recommended cut length of INJECTO Tube to be installed between packers is 25 ft. (see Figure 1).

- Yellow INJECTO Tube: 100 ft.
- Clear PVC Packer Tubing : 18 ft.
- Blue trumpets: 12 pieces
- Anchoring clips: 100 pieces
- 1 Pallet = 40 x 100 ft. kits = 4000 ft.
- Unlimited shelf life when stored in a dry place.

### Properties

Typical Properties	
Outside Diameter	1/2 in.
Inside Diameter	5/16 in.
Length	Maximum 25 ft.
Weight	4.5 lbs per 25 ft.
Operating temperature	Up to 158°F
Tensile strength steel wire	Approx. 261,000 psi
Diameter filter pores	35 microns

## Installation Guidelines

A high strength spiral wire coil (1) prevents collapse during concrete placement, while the non-woven filter membrane (2) prevents the tube from being clogged with concrete particles. A bright yellow reinforced mesh sleeve (3) protects the tube and allows for easy inspection before the pour. Wherever old to new concrete surfaces join, the INJECTO Tube system can be easily installed (see Figure 2).

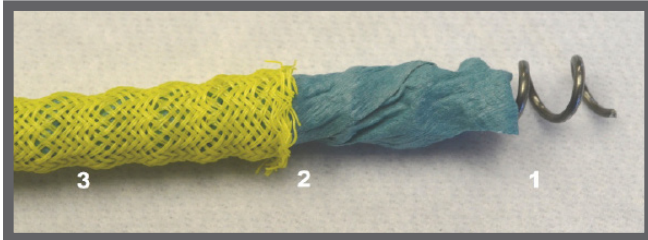


Figure 2. INJECTO® Tube Construction

The yellow INJECTO Tube is installed onto the hardened concrete during formwork installation. In the case of rough surfaces, any gap between INJECTO Tube and the surface should be filled with SWELLSEAL® WA or Preprufe® Hydrophilic Sealant.

The yellow INJECTO Tube is cut to the required length on the job site (recommended length 25 ft. or less). The cut ends are smoothed with a twist; then the blue trumpets are installed over the yellow INJECTO Tube and screwed down to the stop mark inside the trumpet (Figure 3).

The yellow INJECTO Tube is attached to the concrete with the anchoring clips between the inner and outer reinforcing bars. Attach the anchoring clips to the concrete every 12 inches with concrete anchors or nails applied with a powder actuated system (see Figures 5, 6 & 7).

The blue trumpets provide a connection between the yellow INJECTO Tube and the clear packer tubing. Trumpets on adjacent runs should be installed with the wide ends of the trumpets (where the yellow INJECTO Tube is attached) in line with each other and the two trumpets separated by 2-3 inches (see Figures 4 & 8). This will help avoid cross contamination of the yellow INJECTO Tubes during the grouting operation.

Always terminate the yellow INJECTO Tube into a trumpet and allow for a minimum of 2-1/2" of concrete cover.

**Do not run the yellow INJECTO Tube outside the formwork.**

Attach the clear packer tubing over the serrated end of the trumpets. Then cut the appropriate length of packer tubing as required to reach a formholder packer or to extend outside the formwork. The clear packer tubing should be secured to the rebar with tie wire to prevent movement during the pour.

The formholder packers can be either nailed to wooden formwork or attached to the rebar with steel tie wire if metal forms are used. If formholder packers are used, attach the clear packer tubing directly to them. If the clear packer tubing is being run outside the formwork, protect the open ends with a plastic cap or tape and take measures to protect them from damage during formwork, installation and stripping.

The INJECTO Tube System is ideal for unique and problem details such as pipe penetrations and attachment to conventional PVC waterstops that may encounter very high head pressures (see Figures 9 and 10).

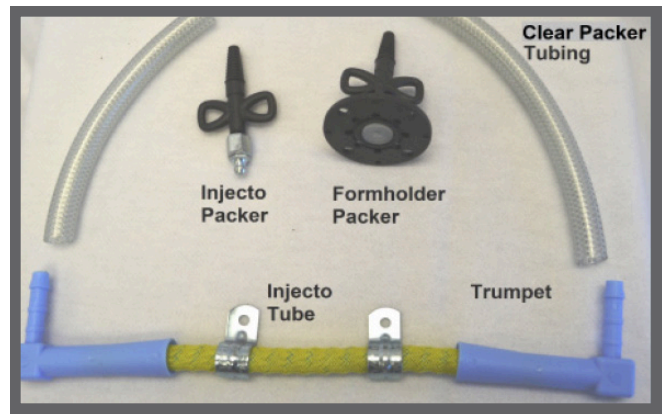


Figure 3. INJECTO® Tube shown with blue trumpets. Injecto Packer and Formholder Packer are not included in standard Injecto Tube "kit"

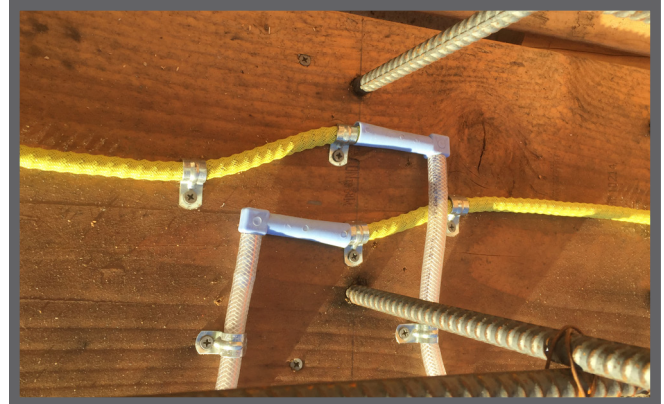


Figure 4. Position of trumpets



Figure 5. Anchoring clips on Injecto

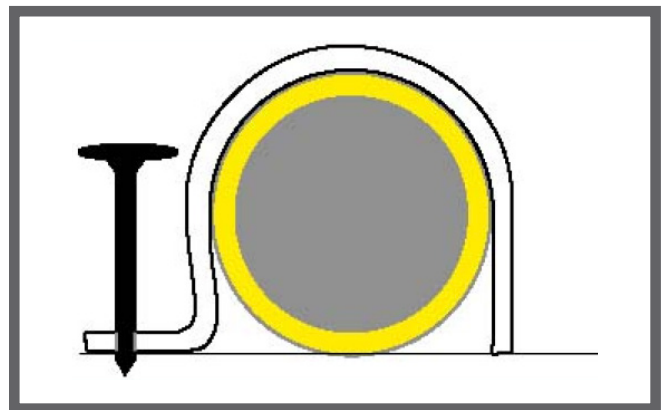


Figure 6. Nailing anchor clips

## CAUTIONS:

1. The yellow INJECTO Tube must be installed in direct contact with the joint over its full length, to allow proper and complete distribution of the injection resin. If the concrete is not smooth enough to allow full contact, use SWELLSEAL WA to create a smooth surface. Press INJECTO into the SWELLSEAL WA.
2. Do not cross the yellow INJECTO Tubes. Yellow should never touch yellow or cross contamination could occur during the grouting operation.
3. Ends and beginnings of yellow INJECTO Tube lengths should have trumpets spaced 3-in apart (see Figures 4 and 8). This is to prevent cross-contamination during the resin injection process.
4. Concrete coverage must be a minimum of 2 ½" on all sides. After concrete has cured for the recommended 28 days, any water infiltrating into the joint will be collected by the system and appear through the clear packer tubing. The tubing should either protrude out of the concrete at easily accessible places or be connected to a formholder packer.

The INJECTO Tube system is designed to provide a delivery system for waterproofing resins, which are injected into the structure in accordance with the instructions found in the selected injection resins technical data sheets. Consult with the GCP Technical Department for assistance in selecting the appropriate sealing resin for each condition.

## Health and Safety

Always use protective clothing, gloves and goggles consistent with OSHA regulations during use. Avoid eye and skin contact. Do not ingest. Refer to SDS (Safety Data Sheet) for detailed safety precautions.

In the event of an EMERGENCY call:  
**CHEMTREC 800-424-9300.**

## Limitations

**INJECTO Tube** waterstop system must be installed by an Approved GCP **INJECTO** Applicator, in accordance with the **INJECTO** Manual, for Warranty to be effective. Concrete cover must be a minimum of 2 ½" on all sides.

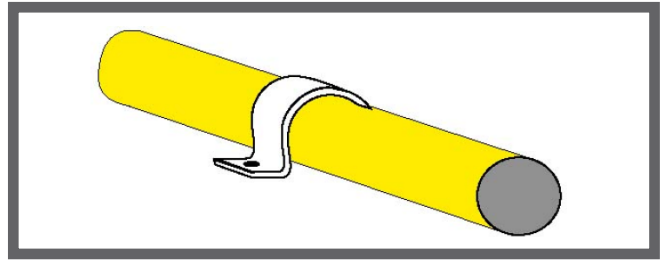


Figure 7. Placement of anchor clips

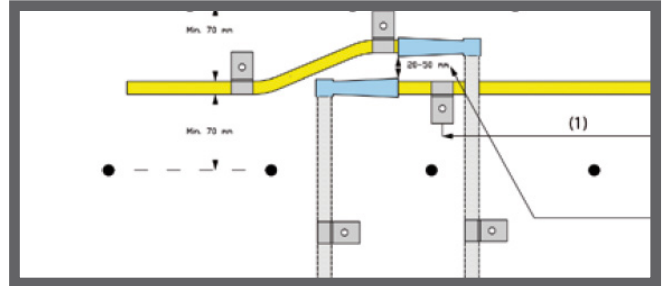


Figure 8. End and beginning of INJECTO® Tube lengths

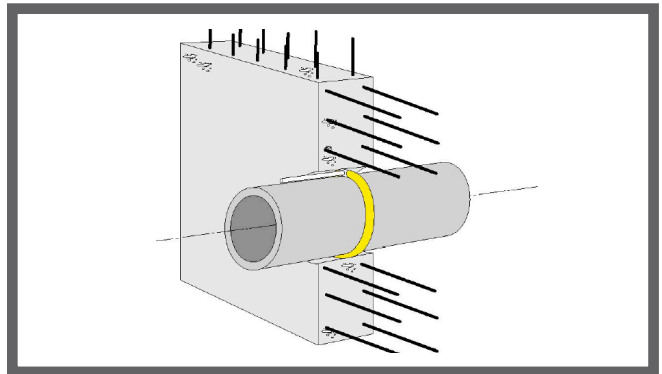


Figure 9. Pipe Sealing

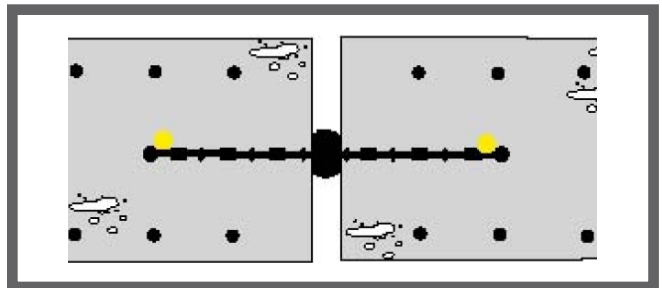


Figure 10. PVC Waterstop

[gcpat.com](http://gcpat.com) | Customer Service: 1-866-333-3726

We hope the information here will be helpful. It is based on data and knowledge considered to be true and accurate, and is offered for consideration, investigation and verification by the user, but we do not warrant the results to be obtained. Please read all statements, recommendations, and suggestions in conjunction with our conditions of sale, which apply to all goods supplied by us. No statement, recommendation, or suggestion is intended for any use that would infringe any patent, copyright, or other third party right.

INJECTO, SWELLSEAL and Preprufe are trademarks, which may be registered in the United States and/or other countries, of GCP Applied Technologies Inc. This trademark list has been compiled using available published information as of the publication date and may not accurately reflect current trademark ownership or status.

© Copyright 2017 GCP Applied Technologies Inc. All rights reserved.

GCP Applied Technologies Inc., 62 Whittemore Avenue, Cambridge, MA 02140 USA.

In Canada, GCP Canada Inc., 294 Clements Road, West, Ajax, Ontario, Canada L1S 3C6.

GCP0083 WS-001-0617 INJECTO-tube



**gcp** applied technologies