

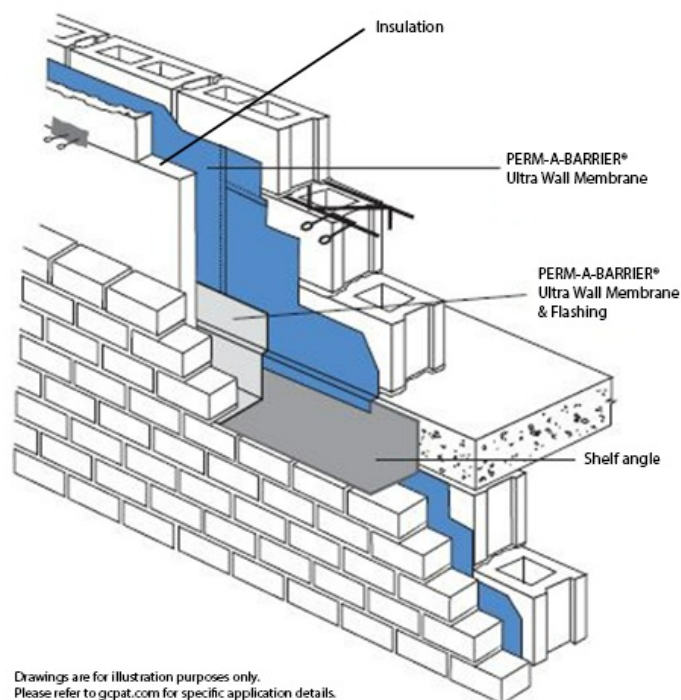
# PERM-A-BARRIER® Ultra™ Wall Membrane and Flashing

100% Butyl Rubber, Aluminum Faced Self-Adhered Air & Vapor Barrier Membrane

## Product Description

PERM-A-BARRIER® Ultra is a 30mil thick cold applied self-adhered membrane with cross laminated high density polyethylene film laminated to an aluminum foil and coated on high temperature 100% Butyl adhesive.

PERM-A-BARRIER® Ultra Wall Membranes and Flashings are ideal for protecting the building superstructure from the damaging effects of the elements. PERM-A-BARRIER Ultra Wall Membranes and Flashings minimizes air and water vapor flow through the building exterior and prevent premature deterioration of the building envelope in extreme climate, Enhance thermal performance of the structure and save energy costs.



## Product Advantages

- Aggressive, conformable 100% Butyl rubber adhesive - allows self-sealing around mechanical fasteners, Compatible with adjacent PERM-A-BARRIER products and variety of roofing products such as TPO & EPDM\*.
- Aluminum facer - provides extended UV exposure, compatible with variety of construction sealant, improved adhesion to film, dimensional stability, high tear, puncture and impact resistance
- Stable at high Inservice temperature up to 300°F, recommended for high altitude, high temperature & under metal cladding applications and parapet details.

- PERM-A-BARRIER Ultra Flashings are heavy duty commercial window and door flashing compatible with other PERM-A-BARRIER sheet and liquid applied air barriers.
- Fire resistant - meets NFPA 285 as part of various wall assemblies with exterior insulations minimizes the air
- Waterproof and impermeable to moisture - Impermeable to the passage of liquid water and vapor
- Airtight - protects against air passage and associated energy losses. Meets ASTM E2357 standard as required by IECC 2012
- Wide temperature application window
- PERM-A-BARRIER Ultra Wall Membrane and Flashing is suitable for application above surface and ambient temperatures at 25°F (-4°C)
- AAMA 711 complaint flashings

## System components

- PERM-A-BARRIER® Adhesive Primer - Primer used to facilitate tenacious adhesion of PERM-A-BARRIER Ultra to the various substrate
- PERM-A-BARRIER® WB Primer - high tack, water-based primer for use with PERM-A-BARRIER Ultra on various substrate
- PERM-A-BARRIER® Universal Flashing & Sealant - one part moisture curing, STPE sealant for sealing penetrations, terminations, brick ties, final terminations, sheathing joint & flashing application.
- PERM-A-BARRIER® Wall Flashing - fully adhered through wall flashing system
- PERM-A-BARRIER® Ultra Flashing - fully adhered flashing for protecting and sealing critical detail areas. Available in 6", 9" and 12" width.

## Safety & Handling

PERM-A-BARRIER® products must be handled properly. Vapors from the mastic and solvent-based primer are harmful and flammable. For these products, the best available information on safe handling, storage, personal protection, health and environmental considerations has been gathered. Refer to product label and SDS (Safety Data Sheet) before use. All users should acquaint themselves with this information prior to working with the material. Carefully read detailed precaution statements on the product labels and SDS before use. SDSs can be obtained from our web site or by contacting us toll free at 866-333-3726.

## Storage Information

- Pallets of PERM-A-BARRIER® Ultra must not be double stacked on the job site.
- All materials must be protected from rain and physical damage.
- Store off ground under tarps with adequate ventilation or otherwise protected from rain and ground moisture. Store membrane where temperatures will not exceed 90°F (32°C) for extended periods.
- Store in dry conditions at 40°F (4.5°C)-90°F(32°C)
- Review technical letter #30 Shelf Life/Storage and Handling of GCP Waterproofing and Air Barrier Products
- Observe two (2) year shelf life and use on a first in- first out basis

## Surface Preparation

Surface must be smooth, clean, dry and free of voids, spalled areas, loose aggregate, loose nails, sharp protrusions or other matter that will hinder the adhesion or regularity of the membrane installation. Clean loose dust or dirt from the surface to which the wall membrane is to be applied by wiping with a clean, dry cloth or brush. It is best practice to first apply primer onto any gypsum sheathing cut edges that will receive PERM-A-BARRIER Ultra and Ultra Flashing to help reduce dust that may impact adhesion. In cold temperature installations do not apply over ice or frost.

## Temperature

PERM-A-BARRIER® Ultra can be applied in dry weather when air and surface temperatures are above 25°F (-4°C).

## Application

Priming of the substrate: Primer should be used prior to application of membrane. PERM-A-BARRIER® Adhesive Primer Or PERM-A-BARRIER® WB Primer can be used. Refer to Technical Letter 2, Substrate Preparation for Application of PERM-A-BARRIER® Products to Glass Mat Faced Gypsum Sheathing for priming requirements on specific glass-mat faced sheathing products.

## Membrane Application

- Pre-cut PERM-A-BARRIER Ultra to easily handled lengths. Peel release liner from roll to expose adhesive and carefully position the membrane against substrate. The entirety of the membrane must be pressed firmly into place with sufficient pressure using a rubber or vinyl hand roller during application to ensure continuous and intimate contact with the substrate and to prevent water from migrating under the membrane. Overlap adjacent pieces 2 in. (51 mm) and roll overlap with a steel hand roller.
- When applying PERM-A-BARRIER Ultra to PERM-A-BARRIER® Wall Membranes and PERM-A-BARRIER® Wall Flashing – Apply a bead of Universal Flashing & Sealant along top edges of cuts on all non-water shedding laps, penetrations, all laps and seams on horizontal surfaces (e.g. sill plates), critical areas and as shown in GCP detail drawings, and tool into place.
- All non-water shedding edges must be sealed with Universal Flashing & Sealant.
- When applying PERM-A-BARRIER Ultra to other PERM-A-BARRIER product – Apply a bead of PAB Universal Flashing & Sealant along top edges, cuts, penetrations, all laps and seams on horizontal surfaces (e.g. sill plates), critical areas and as shown in GCP detail drawings, and trowel into place.
- PERM-A-BARRIER Ultra can be wet set (1 hr after application) into PERM-A-BARRIER VPL 50RS UV Stable. Alternatively, PERM-A-BARRIER Ultra can be applied over cured PERM-A-BARRIER VPL 50RS UV Stable (24 hrs after application).
- No reglet is necessary when installing PERM-A-BARRIER Ultra to vertical surfaces.
- (\*) if tying into PVC & EPDM roofing, consult GCP Technical services for approved tie-in detailing.

## Membrane Repairs

- Repairs must be made using PERM-A-BARRIER® Ultra sized to extend 6 in. (150mm) in all directions from the perimeter of the affected area.
- The repair piece must be pressed into place with a hand roller as soon as possible to ensure continuous and intimate contact with the substrate.
- When sealing the patch if placed in a diamond pattern both water sheading edges will need sealant. If the patches are placed straight, then the top edge and minimum of 3" down each side will need sealant termination.

## Membrane Protection

PERM-A-BARRIER® Ultra must be protected from damage by other trades or construction materials.

## Limitations of use

- Approved uses only include those uses specifically detailed in this Product Data Sheet and other current Product Data Sheets that can be found at [gcpat.com](http://gcpat.com) PERM-A-BARRIER Ultra is not intended for any other use. Contact GCP Technical Services where any other use is anticipated or intended.
- PERM-A-BARRIER Ultra & Ultra Flashings must not be applied in areas where it will be exposed to direct sunlight permanently and must be covered within 1 year of installation. Refer to Technical Letter 19, Exposure Guidelines for PERM-A-BARRIER Self-Adhered Membranes.
- Maximum In Service Temperature (as installed) is 300° F (149° C)
- Not recommended direct over granular surfaces.

## Supply

PRODUCT	UNIT OF SALE	APPROXIMATE COVERAGE	WEIGHT	PALLETIZATION
PERM-A-BARRIER® Ultra	1 roll	210 ft <sup>2</sup> (19.5 m <sup>2</sup> ) 36 in. X 70 ft (0.91 x 21.3m) roll	54 lbs/roll	25 cartons (25 rolls)
PERM-A-BARRIER® Ultra Flashing				
6 in. (150 mm)	6 rolls	70 linear ft per roll	9.1 lbs/roll	25 cartons (150 rolls)
9 in. (225 mm)	4 rolls	70 linear ft per roll	13.5 lbs/roll	25 cartons (100 rolls)
12 in. (300 mm)	3 roll	70 linear ft per roll	18.0 lbs/roll	25 cartons (75 rolls)
36 in. (914 mm)	1 roll	70 linear ft per roll	54 lbs/roll	25 cartons (25 rolls)
PERM-A-BARRIER® Universal Flashing & Sealant- 29 oz. Cartridge	1 cartridge	approx. 30 linear ft x 1/4 in. bead	29 oz. cartridge	10 cartridges/ carton 42 cartons/ pallet

## Typical Properties

PROPERTY	PERM-A-BARRIER <sup>®</sup> Ultra	TEST METHOD
Thickness	0.03 in. (0.8 mm)	ASTM D3767 method A
Minimum tensile strength, film	5000 psi (34.5 MPa)	ASTM D882
Minimum elongation, to failure	200%	ASTM D882
Pliability, at 180° bend over 1 in. (25 mm) mandrel	Pass at -20°F (-29°C)	ASTM D1970
Nail Sealability	Pass	ASTM D1970
Minimum puncture resistance, membrane	70 lbs (311 N)	ASTM E154
Lap peel adhesion	3.5 lbs/in.	ASTM D903 Mod
Maximum permeance to water vapor transmission	<0.01 perms / 0.02 perms	ASTM E96 Method A/ Method B
Water resistance of in-place membrane	Pass	ASTM E331
Air permeance of in-place membrane <sup>1</sup>	< 0.02 L/s/m <sup>2</sup> (0.004cfm/ft <sup>2</sup> )	ASTM E2178
Assembly air permeance at 1.57 psf (75 Pa) pressure difference <sup>1</sup>	< 0.02 L/s/m <sup>2</sup> (0.004cfm/ft <sup>2</sup> )	ASTM E2357
Wall assembly fire test	Pass as part of various wall assemblies	NFPA 285
Peel Adhesion to Gypsum board	>5 pli	ASTM D903
Peel adhesion to concrete	>5 pli	ASTM D903

### Footnote:

1. Air permeance measured at a pressure differential of 1.57 psf (75 Pa).
2. Specific wall assemblies are available at [gcpat.com](http://gcpat.com).

## gcpat.com | North America Customer Service: 1-866-333-3726

We hope the information here will be helpful. It is based on data and knowledge considered to be true and accurate, and is offered for consideration, investigation and verification by the user, but we do not warrant the results to be obtained. Please read all statements, recommendations, and suggestions in conjunction with our conditions of sale, which apply to all goods supplied by us. No statement, recommendation, or suggestion is intended for any use that would infringe any patent, copyright, or other third party right.

PERM-A-BARRIER is a trademark, which may be registered in the United States and/or other countries, of GCP Applied Technologies Inc. This trademark list has been compiled using available published information as of the publication date and may not accurately reflect current trademark ownership or status.

© 2023 GCP Applied Technologies Inc. All rights reserved

GCP Applied Technologies Inc., 2325 Lakeview Parkway, Suite 400, Alpharetta, GA 30009, USA  
GCP Canada, Inc., 294 Clements Road, West, Ajax, Ontario, Canada L1S 3C6

This document is only current as of the last updated date stated below and is valid only for use in the United States. It is important that you always refer to the currently available information at the URL below to provide the most current product information at the time of use. Additional literature such as Contractor Manuals, Technical Bulletins, Detail Drawings and detailing recommendations and other relevant documents are also available on [www.gcpat.com](http://www.gcpat.com). Information found on other websites must not be relied upon, as they may not be up-to-date or applicable to the conditions in your location and we do not accept any responsibility for their content. If there are any conflicts or if you need more information, please contact GCP Customer Service.

Last Updated: 2024-03-20

[gcpat.com/solutions/products/perm-a-barrier-air-barrier-system/perm-a-barrier-ultra-wall-membrane-and](http://gcpat.com/solutions/products/perm-a-barrier-air-barrier-system/perm-a-barrier-ultra-wall-membrane-and)