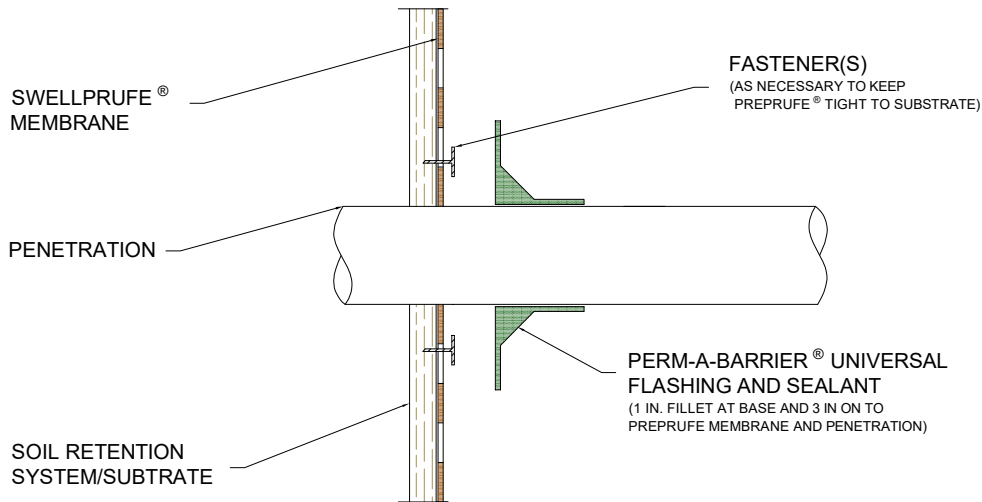


NOTES: ALL PENETRATIONS TO BE GROUTED SOLID IN PLACE.



## ASSEMBLY

**PERM-A-BARRIER® UNIVERSAL FLASHING AND SEALANT**  
(1 IN. FILLET AT BASE AND 3 IN ON TO PREPRUFE® MEMBRANE AND PENETRATION)

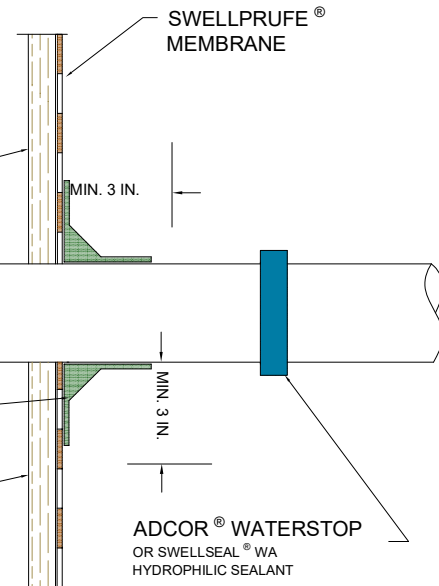
**SOIL RETENTION SYSTEM/SUBSTRATE**

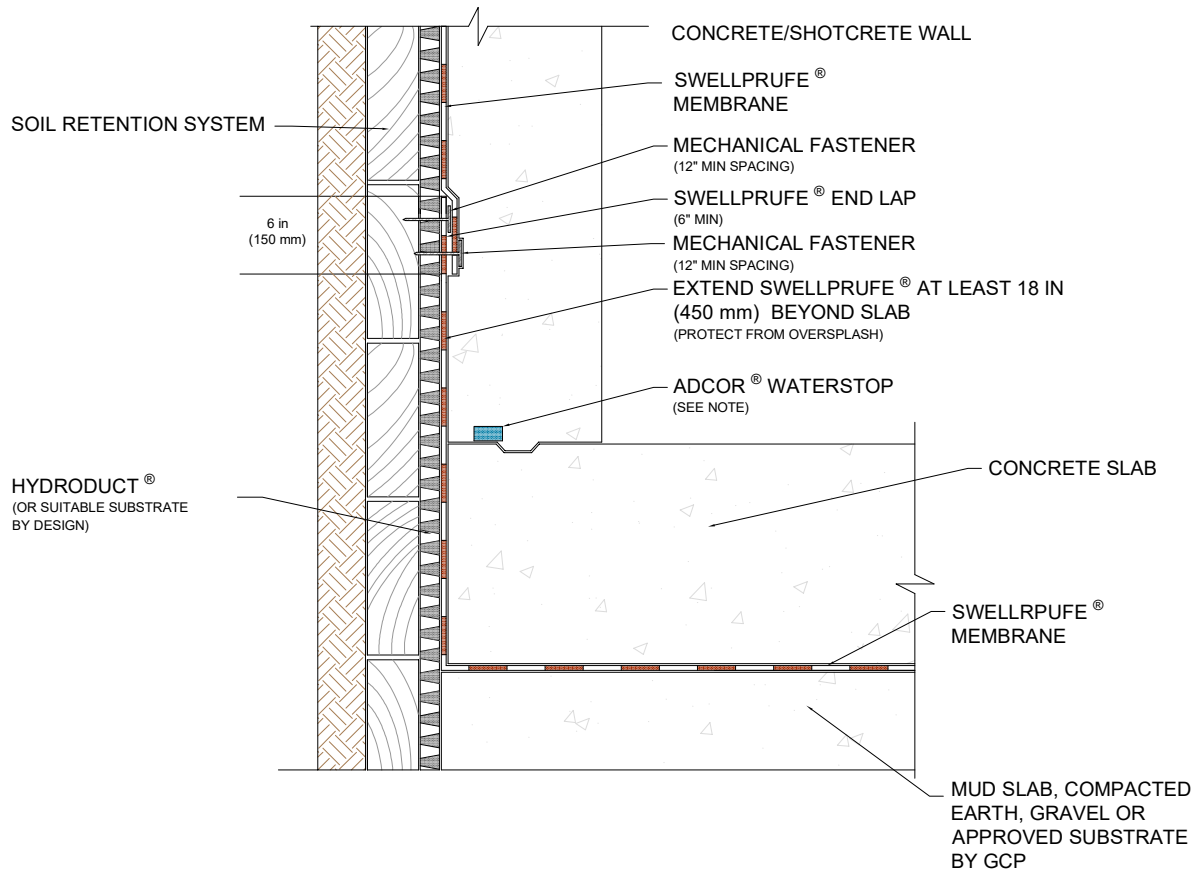
**PENETRATION**

**PERM-A-BARRIER® UNIVERSAL FLASHING AND SEALANT**  
(1 IN. FILLET AT BASE AND 3 IN ON TO PREPRUFE® MEMBRANE AND PENETRATION)

**SOIL RETENTION SYSTEM/SUBSTRATE**

## FINISHED





NOTE: GCP MAY APPROVE AN ALTERNATE GCP WATERSTOP BASED ON DESIGN CONDITIONS

PAB® UNIVERSAL  
FLASHING AND  
SEALANT

MECHANICAL  
FASTENERS  
(12" ON CENTER)

SWELLPRUFE®  
MEMBRANE

MECHANICAL  
FASTENERS  
(12" ON CENTER)

CANT TRANSITION  
(PAB UNIVERSAL FLASHING AND  
SEALANT, 45 DEG WOOD STRIP,  
MORTAR OR EQUIVALENT)

MECHANICAL  
FASTENER

PAB® UNIVERSAL  
FLASHING AND  
SEALANT

SWELLPRUFE®  
MEMBRANE

6 in  
(150 mm)

NOTES:

- SWELLPRUFE® STRIP SHOULD BE PROTECTED DURING BACKFILL PLACEMENT AND COMPACTION
- FOLD SWELLPRUFE® STRIP BACK ONTO COMPACTED EARTH/GRAVEL FOR TIE-IN WITH SWELLPRUFE® MEMBRANE UNDERSLAB
- PROTECTION COURSE/DRAINAGE & BACKFILL NOT SHOWN FOR CLARITY
- DETAIL ALSO APPLICABLE TO TIE SWELLPRUFE® INTO PREVIOUSLY INSTALLED (ADHERED) SWELLPRUFE®
- GCP MAY REQUIRE AN ALTERNATE GCP WATERSTOP BASED ON DESIGN CONDITIONS
- REBAR OMITTED FOR CLARITY
- GCP MAY APPROVE AN ALTERNATE INJECTABLE GCP WATERSTOP BASED ON DESIGN CONDITIONS
- MECHANICAL FASTENER MINIMUM 3/4" INCH FROM EDGE
- MECHANICAL FASTENER MINIMUM 1/2" IN LENGTH



## TRANSITION FROM PRE APPLIED TO POST APPLIED

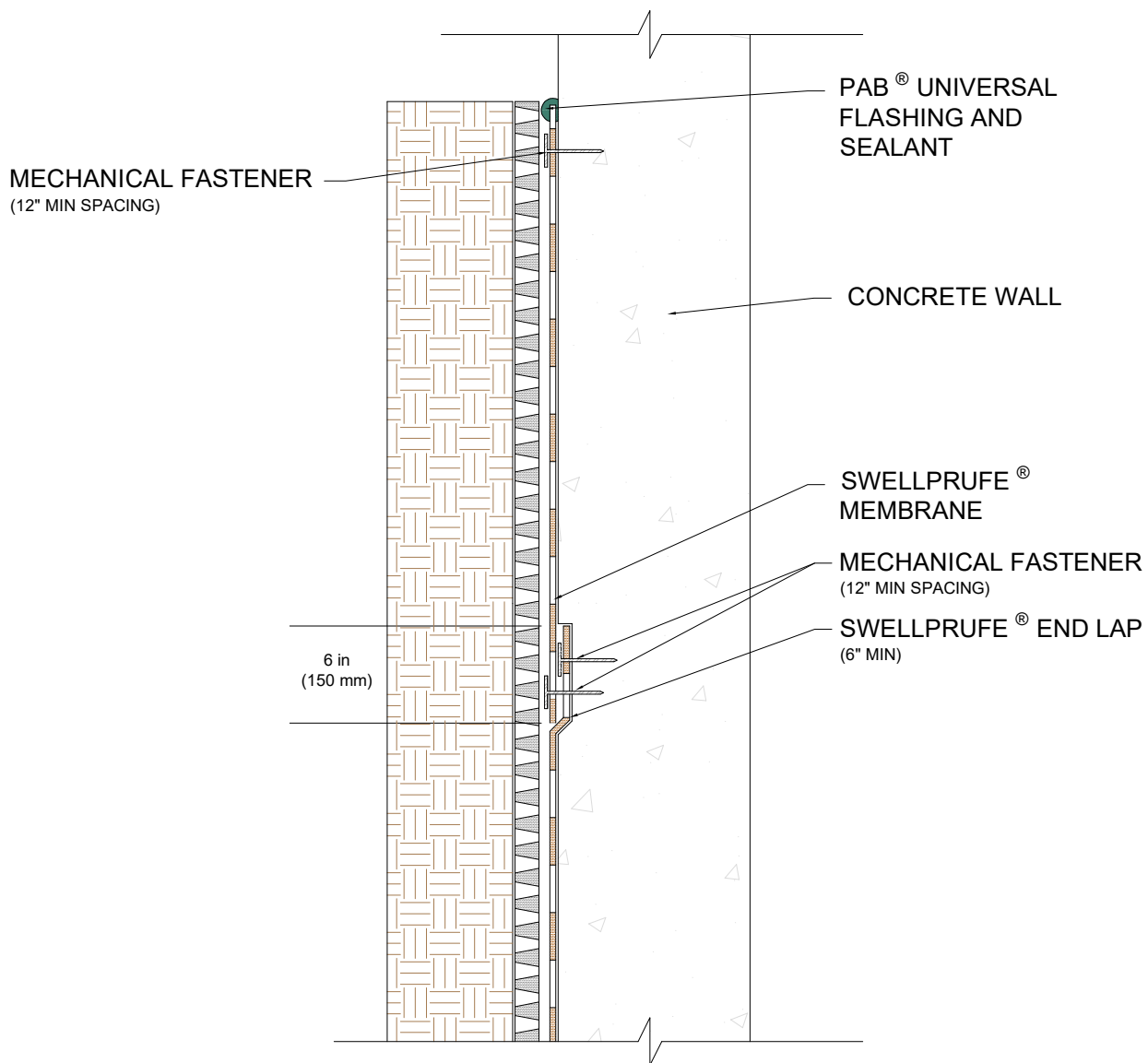
**SWELLPRUFE® WATERPROOFING SYSTEM**

DRAWING: SWL-PRF-122

SCALE: NOT TO SCALE

DATE: 09/05/2025

SUPERCEDES: N/A



#### NOTES:

- SWELLPRUFE® STRIP SHOULD BE PROTECTED DURING BACKFILL PLACEMENT AND COMPACTION
- FOLD SWELLPRUFE® STRIP BACK ONTO COMPACTED EARTH/GRAVEL FOR TIE-IN WITH SWELLPRUFE® MEMBRANE UNDERSLAB
- PROTECTION COURSE/DRAINAGE & BACKFILL NOT SHOWN FOR CLARITY
- DETAIL ALSO APPLICABLE TO TIE SWELLPRUFE® INTO PREVIOUSLY INSTALLED (ADHERED) SWELLPRUFE®
- GCP MAY REQUIRE AN ALTERNATE GCP WATERSTOP BASED ON DESIGN CONDITIONS
- REBAR OMITTED FOR CLARITY
- GCP MAY APPROVE AN ALTERNATE INJECTABLE GCP WATERSTOP BASED ON DESIGN CONDITIONS



## VERTICAL APPLICATION - TYP POST APPLIED

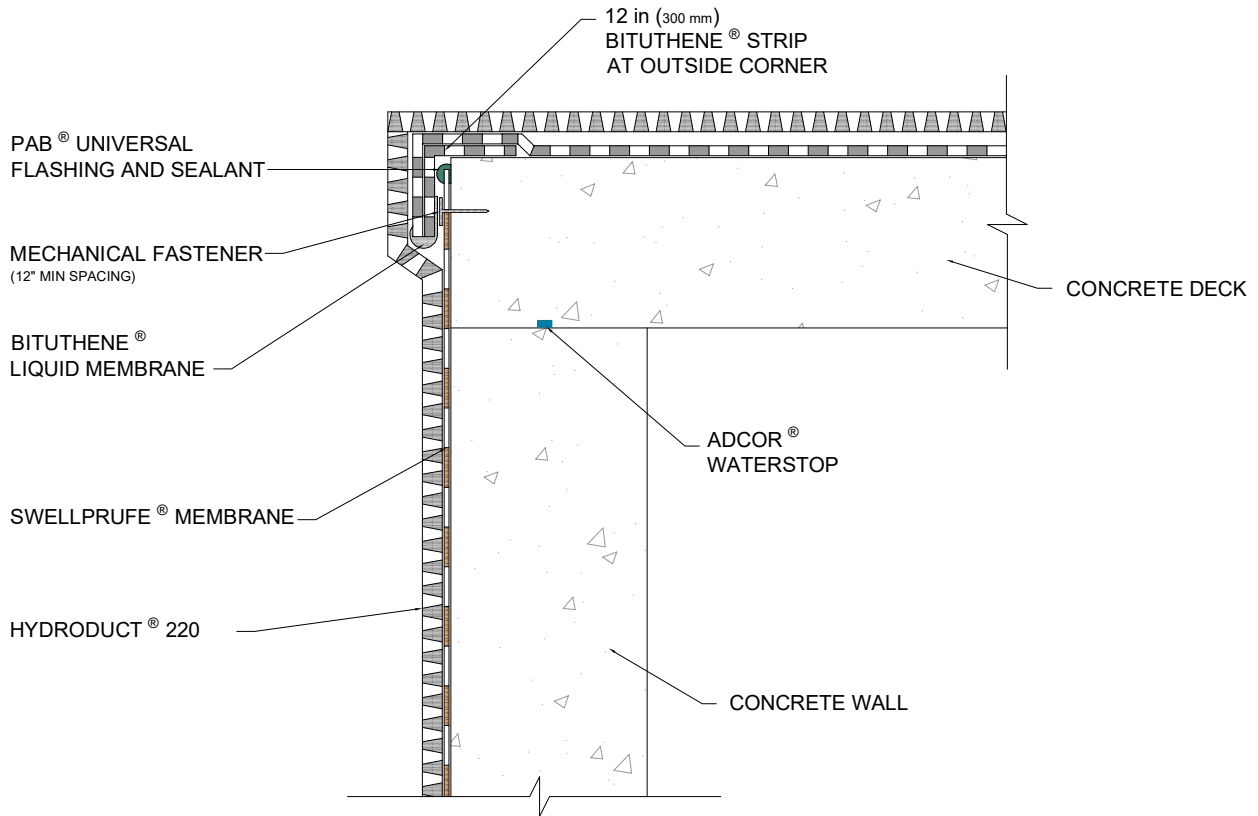
SWELLPRUFE® WATERPROOFING SYSTEM

DRAWING: SWL-PRF-123

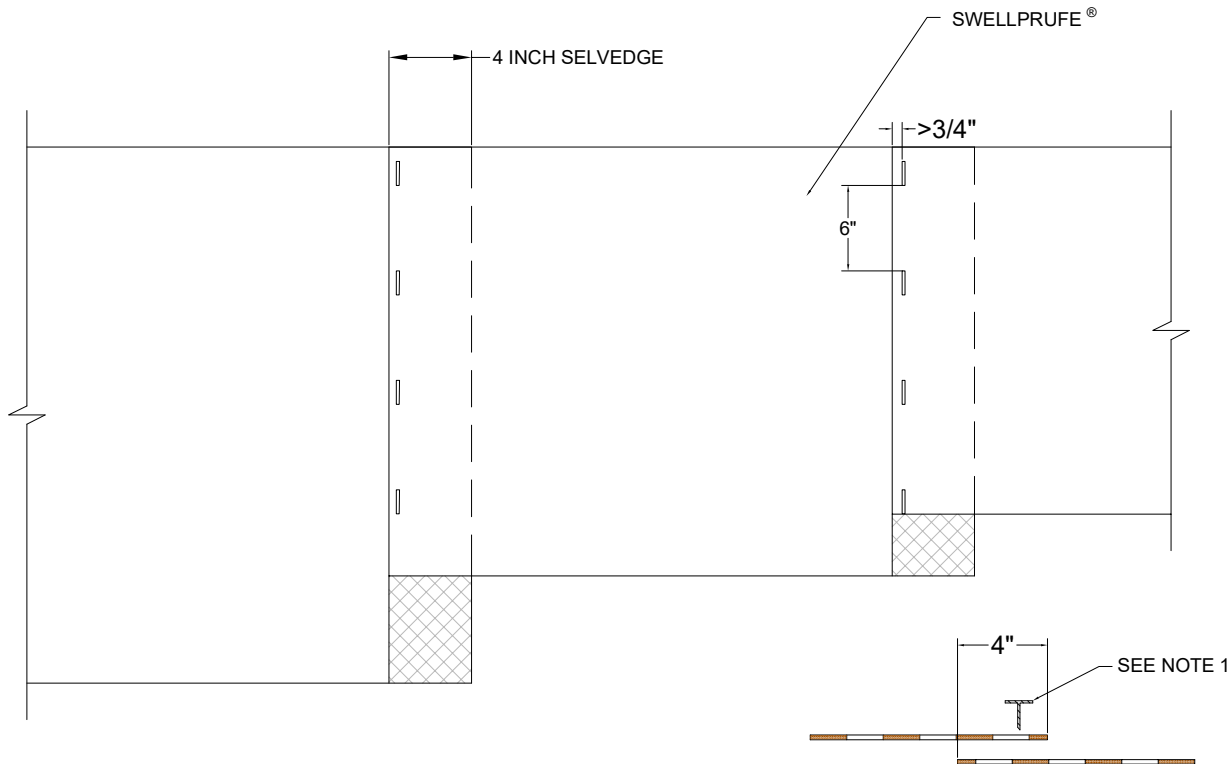
SCALE: NOT TO SCALE

EFFECTIVE DATE: 09/05/2025

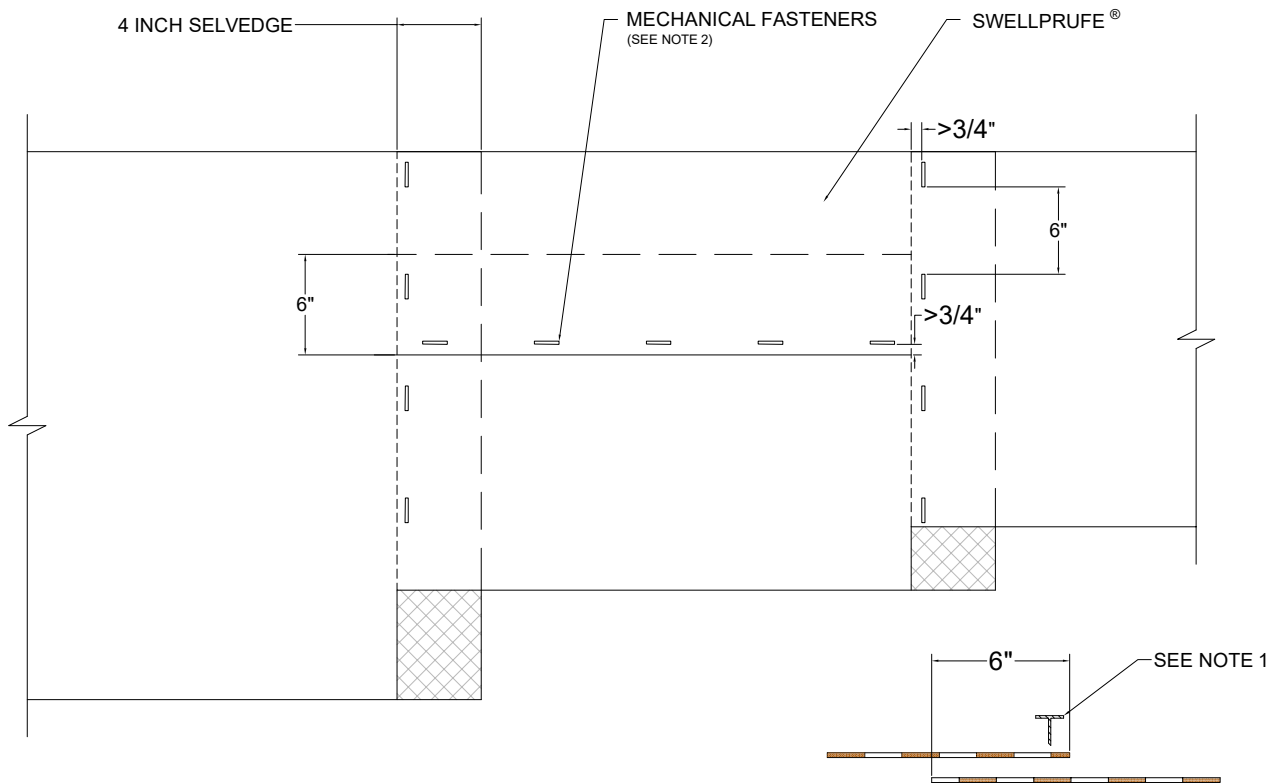
SUPERCEDES: N/A



NOTE - GCP MAY REQUIRE AN ALTERNATE GCP WATERSTOP BASED ON DESIGN CONDITIONS



NOTES:  
1. MECHANICALLY FASTEN AT 6 INCH CENTERS

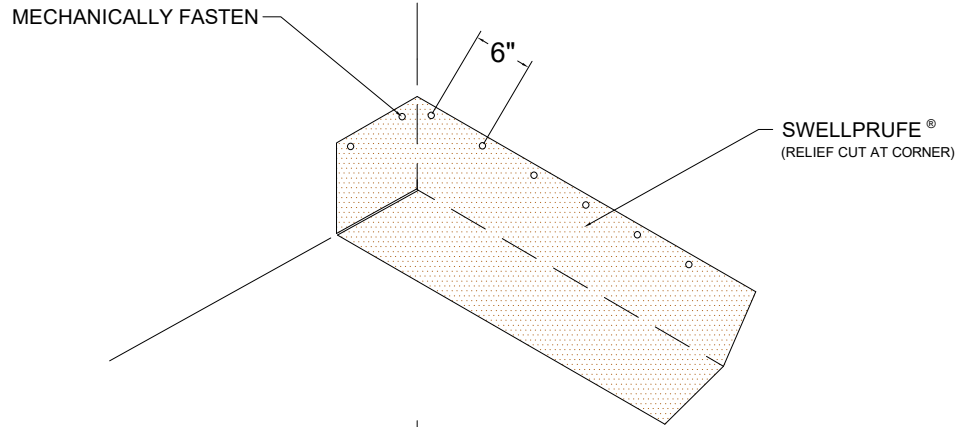


NOTES:

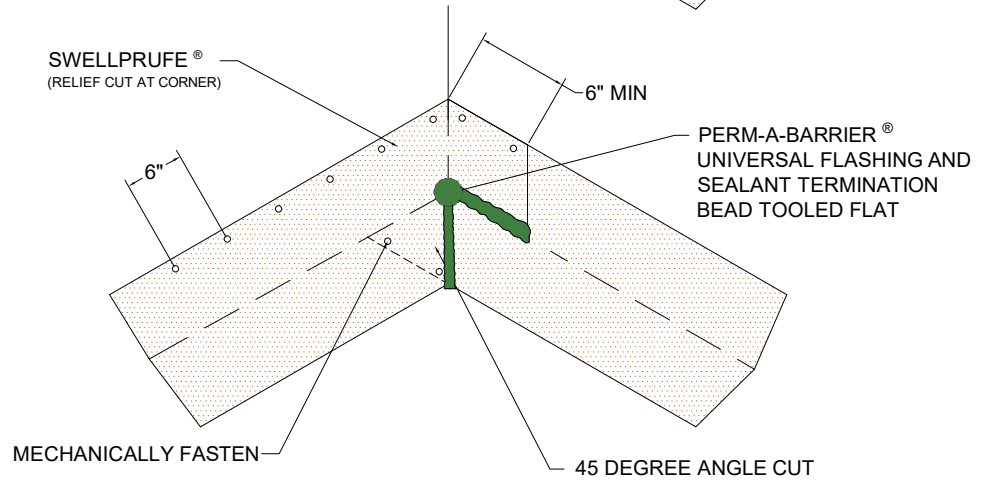
1. MECHANICALLY FASTEN AT 6 INCH CENTERS
2. MAXIMUM 6 FASTENERS ON END LAP



STEP 1

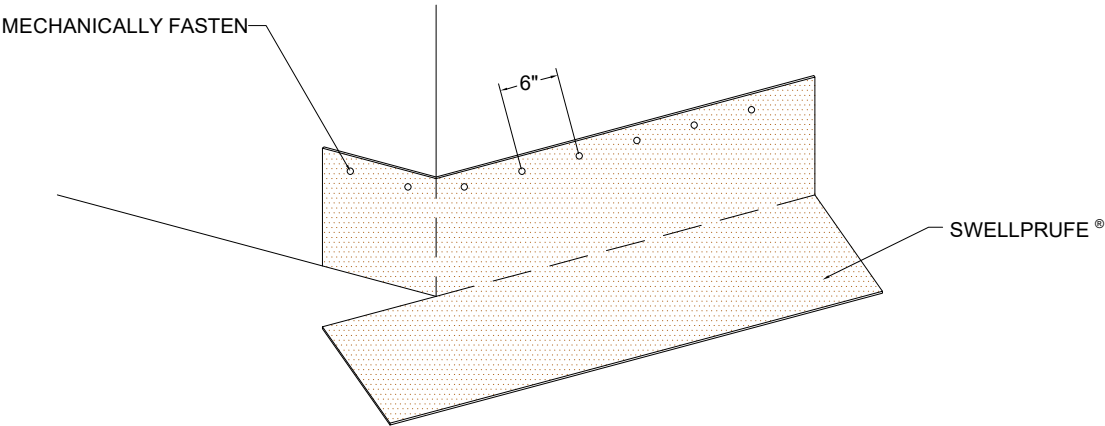


STEP 2

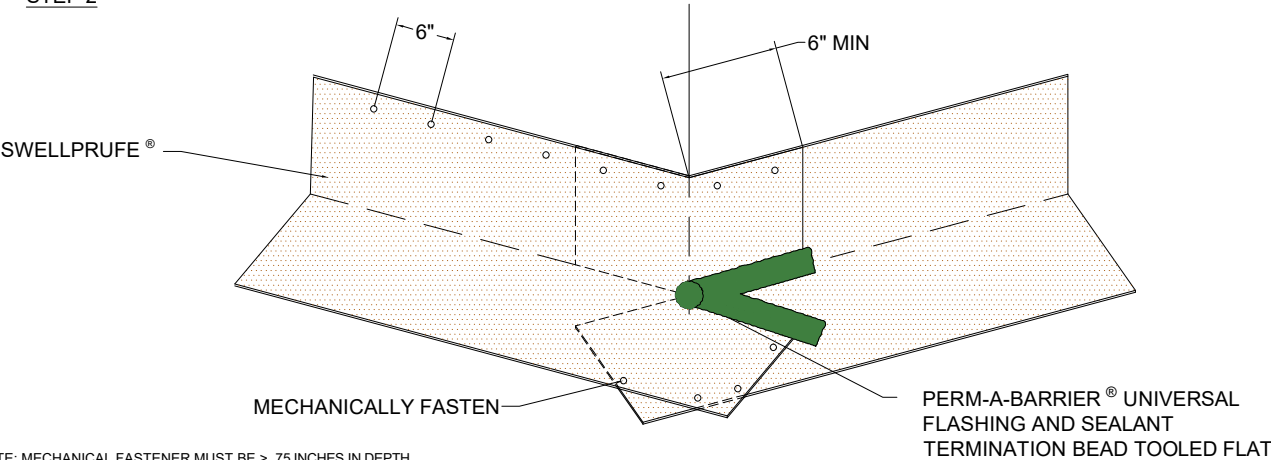


NOTE: MECHANICAL FASTENER MUST BE > .75 INCHES IN DEPTH

STEP 1



STEP 2



NOTE: MECHANICAL FASTENER MUST BE > .75 INCHES IN DEPTH