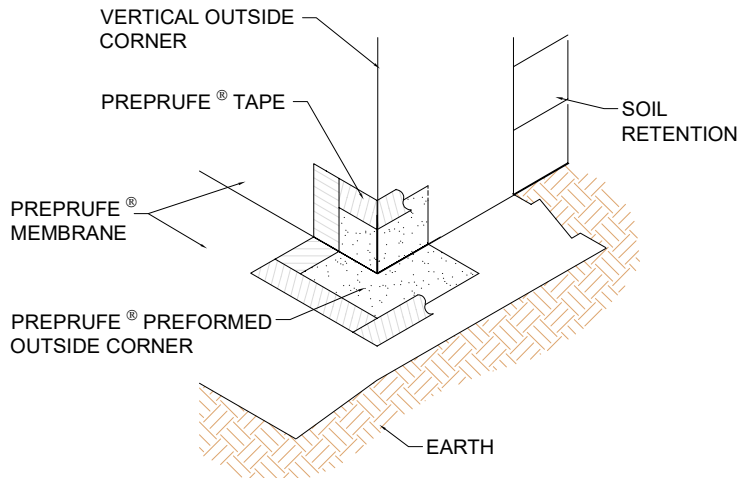


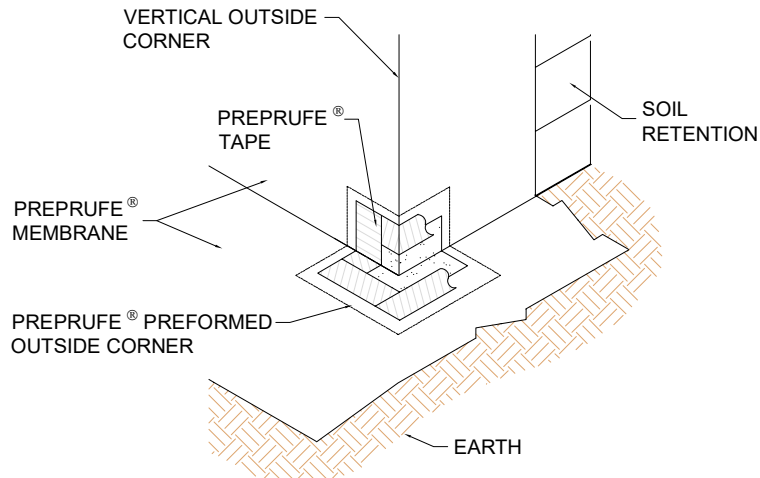
OPTION A - INSTALLATION AFTER MEMBRANE



OPTION A - INSTALLATION INSTRUCTIONS:

1. REMOVE RELEASE LINER FROM BOTH SIDES OF PREPRUFE® OUTSIDE CORNER AND INSTALL TIGHT AGAINST PREPRUFE® MEMBRANE
2. ENSURE THE PREPRUFE® OUTSIDE CORNER COVERS THE PREPRUFE® MEMBRANE BY A MINIMUM OF 3 in. (75 mm) ON ALL SIDES
3. APPLY PREPRUFE® TAPE CENTERED OVER ALL EDGES OF THE PREPRUFE® OUTSIDE CORNER. ROLL FIRMLY IN PLACE, REMOVE RELEASE LINER AND DISCARD

OPTION B - INSTALLATION BEFORE MEMBRANE



OPTION B - INSTALLATION INSTRUCTIONS:

1. INSTALL PREPRUFE® OUTSIDE CORNER TIGHT AGAINST SUBSTRATE, REMOVE RELEASE LINER AND DISCARD
2. APPLY PREPRUFE® MEMBRANE OVER PREPRUFE® OUTSIDE CORNER ENSURING A 3-5 in. (75-125 mm) OVERLAP ONTO PREPRUFE® OUTSIDE CORNER
3. APPLY PREPRUFE® TAPE CENTERED OVER THE EDGE OF PREPRUFE® MEMBRANE AND ONTO THE PREPRUFE® OUTSIDE CORNER. ROLL FIRMLY IN PLACE, REMOVE RELEASE LINER AND DISCARD.

NOTES:

- PREPRUFE® MEMBRANE SEAMS NOT SHOWN FOR CLARITY
- PREPRUFE® TAPE SHOULD OVERLAP ONTO SURFACES OF TAPE, MEMBRANE, CORNER/CAP, ETC. A MINIMUM OF 2 in (50 mm)
- USE DETAIL PRE036 WHEN PREPRUFE® PREFORMED OUTSIDE CORNER IS **NOT** VIABLE

OUTSIDE FORMED CORNERS

PREPRUFE® WATERPROOFING SYSTEM

DRAWING: PRE-054

SCALE: NOT TO SCALE

EFFECTIVE DATE: 08-01-2025

SUPERCEDES: 10-10-2024