

Table of Contents

Technical Data Sheets

PREPRUFE® SCS Plus Data Sheet	2
PREPRUFE® Tape and PREPRUFE® CJ Tape	12

Safety Data Sheets

Preprufe® SCS Plus Membrane	14
PREPRUFE® Tapes (All Products)	21
PREPRUFE® SCS Hydrophilic Grout Part A	28
PREPRUFE® SCS Hydrophilic Grout Part B	36
PREPRUFE® SCS Hydrophilic Grout Part A Activator	43
PREPRUFE® SCS Hydrophilic Grout Part B Activator	51

Detail Drawings - All	59
------------------------------	-----------

PREPRUFE® SCS Plus Data Sheet

Blindside waterproofing system for shotcrete foundation walls

[PREPRUFE® SCS Installation Video](#)

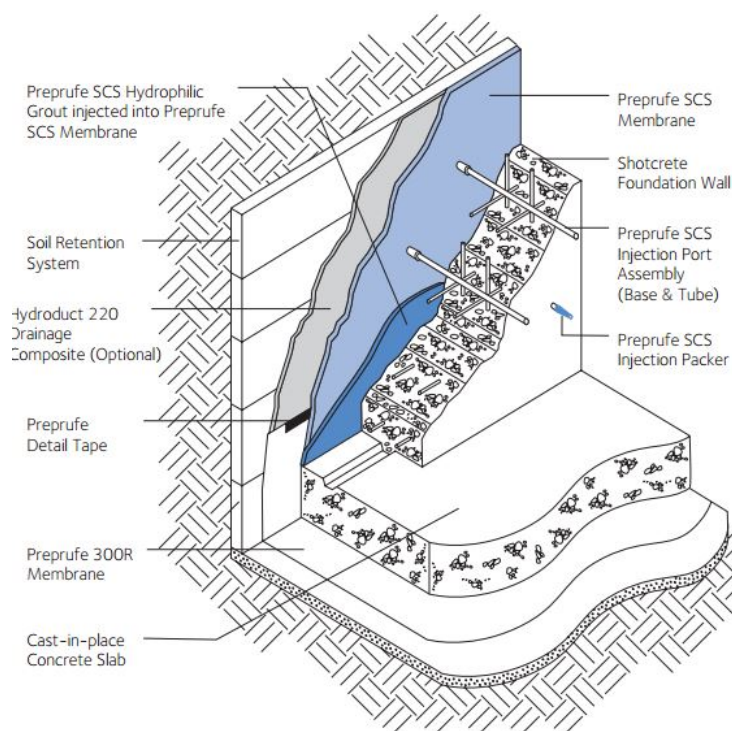
Product Description

PREPRUFE® SCS Plus is a unique blindside waterproofing system specifically developed to provide a high performance waterproofing solution for shotcrete foundation walls. The waterproofing system consists of the following:

- PREPRUFE® SCS Plus membrane consisting of a polymer mesh-reinforced cavity backed by a plastic film facing the soil retention system, and faced with a non-woven, semi-permeable geotextile acting as a shotcrete barrier while allowing grout to bond to the shotcrete
 - PREPRUFE® SCS Plus membrane is a methane barrier fully compliant to LARR requirement of LADBS AC-L137 for waterproofing and shotcrete.
- PREPRUFE® SCS grout injection ports installed prior to shotcrete placement to facilitate hydrophilic grout injection
- PREPRUFE® SCS hydrophilic grout post-injected under pressure into composite sheet through injection ports left protruding through the shotcrete. The shotcrete side of the membrane enables grout to bond with shotcrete across the permeable geotextile.

The PREPRUFE® SCS Plus composite sheet membrane is applied vertically to timber lagging or other soil retention systems. Shotcrete is then placed directly against the geotextile side of the membrane. Unlike conventional waterproofing systems, the PREPRUFE® SCS waterproofing system has injection ports to facilitate grout injection into a pre-created cavity space, forming an in-situ monolithic grout membrane with uniform thickness.

After shotcrete placement, injection of the specially formulated PREPRUFE® SCS hydrophilic grout is used to fill and seal the system, providing ultimate waterproofing protection. All components of the specially developed PREPRUFE® SCS system work together to form a continuous and integral bond to the structure, eliminating lateral water migration between the membrane and the shotcrete. When properly installed and grouted, the PREPRUFE® SCS system will provide a robust barrier to water, moisture and gas and prevents both the ingress and lateral migration of water.



Product Advantages

GCP'S PREPRUFE®SCS is the only waterproofing solution specifically designed to solve the challenges associated with shotcrete waterproofing

- Durable system designed specifically to withstand the force of shotcrete placement
- Post-injected grout creates a seamless, monolithic curtain of grout that permanently and fully adheres to shotcrete walls and fills void, cracks and rebar shadows within the shotcrete wall to stop lateral water migration
- PREPRUFE SCS Grout quickly gels, sealing around rebar anchors and penetrations for added redundancy
 - In the event of water intrusion past the membrane, PREPRUFE® SCS Grout hydrophilic properties cause it to expand and block the water from entering the building.
- Water and vapor proof – protects basements from ground water and gasses
- Methane Barrier – PREPRUFE® SCS Plus membrane serves as an effective methane barrier, fully compliant with the Los Angeles Research Report (LARR) standards.
- Gas resistance – PREPRUFE® SCS Plus membrane will restrict the ingress of Radon, Benzene, Toluene, Gasoline & other VOCs Trichloroethylene & Tetrachloroethylene (TCE/PCE) into buildings from landfill and naturally occurring sources, satisfying the performance criteria for a gas-resistant membrane.
- Chemically resistant – provides effective external protection against most aggressive soils, contaminated ground water and hydrocarbons in suspension
- Durability
 - Unique composite film – engineered for strength, flexibility, gas barrier and a smooth finish
 - This unique composite HDPE film makes PREPRUFE® SCS Plus extremely tough & durable.
 - Quality Assurance – Self-adhesive selvage ensures minimum laps.
- System Compatibility – Can be combined with PREPRUFE® pre-applied membranes under the slab, BITUTHENE® Liquid Membrane, and HYDRODUCT® drainage composites and accessories for waterproofing system solutions
- Proven track record of successful shotcrete wall waterproofing

Installation

The PREPRUFE® SCS system is intended to be installed by GCP trained applicators only. For a list of trained applicators, please contact your GCP representative. All PREPRUFE® SCS system materials shall be supplied by GCP and applied strictly in accordance with the company's instructions. Refer to the PREPRUFE® SCS waterproofing systems installation manual for detailed application instructions.

Substrate Preparation

It is essential to create a sound and solid substrate to eliminate movement during the shotcrete placement. Substrates must be regular and smooth with no gaps or voids greater than 1/2 in. (12 mm). Grout around all penetrations such as utility conduits for stability.

If necessary, apply plywood, rigid insulation, HYDRODUCT® 220 drainage composite or other approved facing to the substrate to provide support to the membrane. Board systems such as timber lagging must be close butted to provide support and not more than 1/2 in. (12 mm) out of alignment. For areas close to finished grade where steel soldier piles and wood lagging will be removed, install a protection layer of 1/2 in. (12 mm) thick cementitious wall board centered over the steel soldier piles. Apply the PREPRUFE® 300R membrane below all horizontal slabs and rafts (i.e., mud slabs), extending a minimum of 18 in. (457 mm) beyond the top of the slab and protect from over splash. Refer to the PREPRUFE® 300R membrane product information for more detailed installation instructions. If the PREPRUFE® 300R membrane will not be used below the slab, consult your GCP representative.

Membrane Installation

The PREPRUFE® SCS Plus membrane can be applied at temperatures of 25°F (-4°C) or above. The waterproofing membrane may be installed in any convenient length, but is best installed vertically along the full length of the soil retention. With the geotextile side facing toward the shotcrete placement, attach the membrane to the substrate with staples, approved by GCP, spaced at 24 to 36 in. (610 to 914 mm) O.C. down the middle of the membrane. Ensure the plastic film extension and the underside of the succeeding sheet are clean, dry and free from contamination before attempting to overlap. Overlap the seams by following self-adhesive selvedge guideline to provide a minimum of 4 in. (100 mm) overlap and ensure the top piece of SCS Plus membrane has only the geotextile extension (not film) on the top of the existing SCS Plus membrane. Remove the release liner from the PREPRUFE® SCS Plus membrane and roll the membrane firmly at the seam with a hand roller to ensure a good seal. Mechanically fasten the overlap with staples spaced at 12 to 18 in. (305 to 457 mm) O.C.

For roll ends and cut edges, place PREPRUFE® CJ Tape under the membrane with the adhesive side facing membrane centered along the ends/cut edges. Secure strips to the substrate with staples. Ensure the underside of the membrane is clean, dry and free from contamination. Butt joints the membrane and roll firmly at the seam with a hand roller to ensure a good seal. Apply PREPRUFE® SCS geotextile strip centered over the butt joint and secure on the top and bottom of the butt joint with staples at 12 to 18 in. (305 to 457 mm) O.C.

Penetrations

Follow steps as per Preprufe SCS waterproofing system standard detail # SCS – 004A/B to seal around penetrations such as service pipes, rebar, all-thread and metal dowels. Overlap Preprufe SCS Plus membrane with two lines of Preprufe Detail Tape over the Preprufe target sheets. For technical assistance, please contact GCP Technical Services or your local GCP representative.

Tiebacks

Prior to membrane installation, fasten the PREPRUFE® Tieback Cover ABS base to the substrate to cover the tieback. Apply PREPRUFE® Detail Tape around the outside edge of the ABS base. Install the PREPRUFE® SCS Plus membrane over the ABS base and then cut out the membrane 1/2 in. to 1 in. (12 mm to 25 mm) around the dome hemisphere.

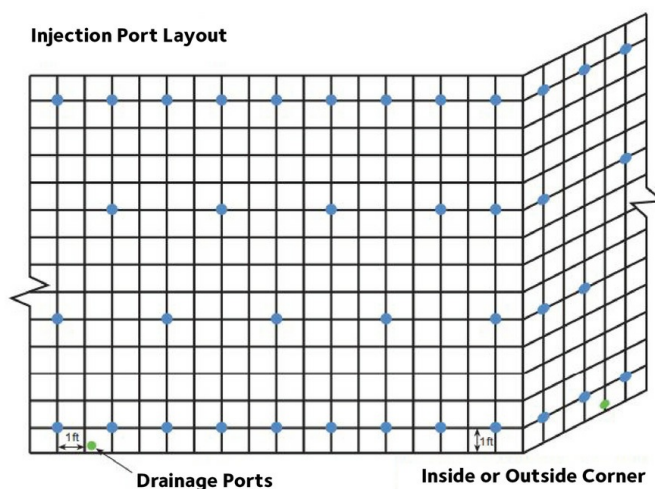
Remove the release paper on the PREPRUFE® Detail Tape and press the membrane firmly to the ABS base. Roll the membrane firmly at the joint with a hand roller to ensure a good seal. Position the PREPRUFE® Tieback Cover on top of the ABS base and mechanically fasten the PREPRUFE® dome. Apply PREPRUFE® Detail Tape (LT or HC) over the top edge of the tieback cover.

Terminations

Position PREPRUFE® CJ Tape under the SCS Plus membrane along the termination, centered along the membrane cut edges/roll ends. Secure half of the tape under the membrane to the substrate with staples. Press the membrane firmly onto the tape and fold over the membrane. Roll the folding area with a hand roller to ensure a good seal. Remove the release paper. Mechanically fasten with staples at 12 in. (305 mm) O.C. along the top edge of the PREPRUFE® CJ Tape.

Tie-ins of PREPRUFE® SCS Plus Membrane to PREPRUFE® 300R Sub-slab Waterproofing

Install the PREPRUFE® 300R Plus membrane over the prepared substrate as detailed in the PREPRUFE® 300R membrane installation guide. If the PREPRUFE® 300R Plus membrane will not be used below the slab, consult your GCP representative.



PREPRUFE® SCS Figure 1

Apply two parallel lengths of PREPRUFE® Detail Tape, one at the top edge of the PREPRUFE® 300R Plus membrane and the other 6–12 in. (150–300 mm) from the top of slab. Remove the release liner. Press the PREPRUFE® SCS Plus membrane to the tape and roll firmly with a hand roller. If necessary, apply 4 in. (102 mm) pieces of PREPRUFE® Detail Tape at 4 ft (1.2 m) O.C. to the bottom edge of the PREPRUFE® SCS Plus membrane to secure it to the PREPRUFE® 300R Plus membrane. Do not use mechanical fasteners through the PREPRUFE® 300R Plus membrane.

Membrane Repair

Inspect the SCS Plus membrane before and after installation of reinforcement steel. Repair damage by wiping the area with a damp cloth to ensure the area is clean and free from dust, and allow to dry. Repair small punctures (1/2 in./12 mm or less) and slices by applying SWELLSEAL®WA centered over the damaged area. Repair large holes and punctures by first cutting out the damaged area. Next, prepare a length of PREPRUFE® CJ Tape at least 3 in. (76 mm) wider than the damaged area on each side. If necessary, overlap the PREPRUFE® CJ Tape with a 3 in. (76 mm) overlap to make a large piece. Center the PREPRUFE® CJ Tape under the damaged area with the adhesive side facing the membrane. Secure the tape with staples. Ensure the membrane overlaps at least 3 in. (76 mm) on the tape on each side. Apply a patch of SCS Plus membrane with the film removed and the geotextile side facing shotcrete extended 6 in. (150 mm) beyond the damaged area. Secure the patch with staples at 4 in. (100 mm) O.C. on each side.

Injection Port Installation

Install the injection port assembly after installation of reinforcement steel and before shotcrete placement. Pre-assemble the injection port assembly by cutting a piece of PREPRUFE® SCS injection tube 4 in. (100 mm) longer than the thickness of the wall and twisting the tube into a PREPRUFE® SCS injection base until a tight connection is made.

The injection port assembly spacing shall be 4 feet in any direction with 2 feet offset every vertical step. The top and bottom layer of injection port assemblies shall be two feet in spacing, located one foot from the edge of the membrane. All vertical corners and terminations shall have port assemblies spaced 2 feet vertically, located one foot from the corner or termination. To allow existing water to drain from the system prior to grout injection, install additional port assemblies 1 in. (25 mm) above the bottom of the membrane at 20 feet (6.1 m) O.C. (refer to Figure 1). All tie-back covers shall have one injection port assembly installed, located on the membrane directly above the tieback (not shown in the figure).

Position the injection port assembly adjacent to the intersection of the reinforcing steel. Press the injection port assembly tightly against the SCS Plus membrane and screw the injection base into the membrane by turning the nozzle clockwise. The port assembly should be twisted until it cannot turn any further (usually 1/4 – 1/2 rotation, although more may be needed). If the port assembly does not snag the geotextile or stop rotating, it has not been attached to the membrane properly. Repeat with a new injection base. Tie the tubing to both the inside and outside layer of reinforcing steel with rebar ties. Cover the tubing end with duct tape to prevent blockage during the shotcrete placement.

Shotcrete Placement

Inspect the port installation before the placement of shotcrete to ensure all ports are still attached to the SCS Plus membrane. Reinstall any damaged or loose ports.

It is recommended that shotcrete be placed within 56 days (42 days in hot climates) of the SCS Plus membrane installation. Shotcrete must be placed in accordance with ACI 506.2. Never use a sharp object to consolidate the concrete. Avoid putting large force on the injection tubing during shotcrete surface finishing. Shotcrete surface finish around all injection ports should be the same as the rest of the wall, avoiding any rough areas or projections adjacent to the ports.

Grouting Procedure

Safety

Read the product label and Preprufe SCS Grout safety data sheet (SDS) and for each system component. All users should acquaint themselves with this information prior to working with the products and follow the precautionary statements. SDSs can be obtained by contacting your local GCP representative or office, by calling GCP toll free at 1-866-333-3SBM (3726) and in some cases from our website at gcpat.com.

Users must be made aware that the equipment used for the PREPRUFE® SCS waterproofing system operates under pressure. Only trained individuals should operate this equipment. Installation personnel should utilize all necessary personal protective gear.

General Guidelines

PREPRUFE® SCS hydrophilic grout can be injected into the PREPRUFE® SCS Plus membrane a minimum of seven days to a maximum of six months after the shotcrete placement. This minimum wait period allows the shotcrete to gain sufficient compressive strength. A minimum concrete compressive strength of 1,500 psi (10 N/mm²) is recommended prior to grout injection.

Preprufe SCS Grout is 'one to one (1:1)' ratio product. To complete one kit of Grout set; below 4 SKUs must be needed.

- 1 pail of Preprufe® SCS Hydrophilic Grout Part A
- 1 pail of Preprufe® SCS Hydrophilic Grout Part B
- 1 can of Preprufe® SCS Hydrophilic Part A Act
- 1 jar of Preprufe SCS Hydrophilic Part B-Act 2lb

Port Preparation

Cut the tubing flush to the shotcrete surface and install the PREPRUFE® SCS injection packer into the tubing. Allow all water to gravity drain from the bottom "drainage ports" prior to installing the packer. Tighten packers using a ratchet or open-end wrench, by turning clockwise until firm and secure. Packers are supplied with a one-way check valve to minimize back flow during the injection procedure.

Grout Injection

The pump mix manifold and clutch that will be used for injecting PREPRUFE® SCS hydrophilic grout should be flushed with flushing agent prior to beginning the grout operation. Flushing lubricates the system. After injecting, the pump mix manifold and clutch should be flushed to remove any liquid grout residue. The general injection technique is as follows:

- Measure the material's temperature and refer to the chart in the detailed installation manual for usage of Activators A and B to get 60–90 seconds setting time. All results are based on laboratory tests. Site trials should always be carried out to determine the actual setting time.
- Determine the pumping volume per port as outlined in the detailed installation manual.
- Begin injection from bottom to top. Start injection from one end to the other end or any convenient distance at each horizontal level, then switch to the next level and follow the same sequence.
- If the pump sits idle (no grout being injected) for more than 30 seconds, flush the pump mix manifold and clutch with flushing agent.

If excessive pumping pressures are needed to cause grout flow or manifold pressure changes significantly, discontinue injection, flush the pump mix manifold and clutch and notify your GCP representative immediately. Avoid sudden application of high pressures during the injection process. Grouting pressure before the mixing head shall not exceed 500 psi.

Environmental Conditions

Precautions

A GCP representative should be consulted prior to application to verify that site conditions are appropriate for the PREPRUFE® SCS system.

The PREPRUFE® SCS system includes injection of grout at high pressures. The project structural engineer should evaluate the site for potential effects on adjacent building elements. Injection has the potential to cause hidden damage if installed incorrectly.

Limitations

Low temperatures will significantly extend set times. Bring the product up to a minimum temperature of 50°F for a minimum period of 24 hours prior to use. If site temperatures are extremely low, material should be held in a warm area before and during use to maintain the product's temperature. Allow no water into open containers. **DO NOT EXCEED 90 °F WHEN WARMING.** (CAUTION—pH NOTICE. Water used on site to activate grouts must be in a range of pH 5.5–7 for optimum grout quality. Varying water pH will cause the reaction times to change. Test ground water for pH and consult with GCP to ensure the pH falls within the threshold limitations.)

Storage & Handling

All PREPRUFE® SCS waterproofing system grout components should be shipped and stored in cool, dry, protected conditions at temperatures between 40°F and 77°F, out of direct sunlight and in accordance with the relevant site health & safety regulations. Do not thin with solvents. **Warning:** Do not combine components other than mixing during field application, as this may cause an exothermic reaction with the production of intense heat, smoke and irritating fumes.

Store in unopened containers.

Shelf life

- SCS Grouts Part A & Part B – 6 Months
- SCS Grout Activator – 12 Months
- SCS Plus Membranes – 12 Months

Transportation Requirement

- SCS Grout Part A – no special requirement.
- SCS Grout Part B – freeze protect.
- SCS Activators – no special requirement
- Preprufe SCS Plus membrane – no special requirement

Shipping Requirements

- SCS Grout Part A + B = Not DG
- Activator part A- ok for partial shipment, follow SDS for bulk quantity shipment
- Activator Part B – HAZMAT shipping, follow material SDS
- Do not stack or palletize Activators A & B together

PREPRUFE[®] SCS Plus Membranes Physical Properties

PROPERTY	TYPICAL VALUE	TEST METHOD
Thickness	0.14 in.	ASTM D6525
Elongation at ultimate break	50%	ASTM D412
Tensile strength, film	5,500 psi	ASTM D412
Peel adhesion to concrete	5 pli	ASTM D903
Resistance to hydrostatic head	232 ft (70 m)	ASTM D5385 ¹
Puncture resistance	185 lbs (820 N)	ASTM E154
Impact resistance, membrane	No change in appearance	SAE J400 ²
VOC permeance of BTEX and saturated TCE & PCE	Not Detectable (Membrane, Seam)	ASTM F 739 (Open loop)
Diffusion coefficient, TCE	$<1.24 \times 10^{-12} \text{ m}^2/\text{s}$	Calculated
Diffusion coefficient, PCE	$<1.45 \times 10^{-12} \text{ m}^2/\text{s}$	Calculated
Diffusion Coefficient, Benzene	$<3.56 \times 10^{-11} \text{ m}^2/\text{s}$	Calculated
Diffusion Coefficient, Toluene	$<1.52 \times 10^{-11} \text{ m}^2/\text{s}$	Calculated
Diffusion Coefficient, Ethylbenzene	$<3.60 \times 10^{-11} \text{ m}^2/\text{s}$	Calculated
Diffusion Coefficient, Xylene	$<7.53 \times 10^{-12} \text{ m}^2/\text{s}$	Calculated
Methane Gas Transmission Rate after Soil Burial, (mL/day-m ² -atm),	8	ASTM D 1434
Environmental Stress Cracking	PASS	ASTM D 1693

Footnotes:

1. Hydrostatic head tests are performed by casting concrete against the geotextile side of the membrane with a lap and then injecting grout into the membrane space. The cured block is cracked and then placed in a chamber where water is introduced to the membrane surface (including the lap) up to 231 ft (70 m) head.
2. The tests are performed by projecting 3/8 in. gravel by means of 100 psi air blast onto the geotextile side of the membrane.

Supply of Components

Membrane Installation

PRODUCT NAME	DESCRIPTION	SUPPLY
PREPRUFE® SCS Plus Membrane	A unique composite sheet membrane LARR complaint methane barrier and waterproofing membrane applied vertically to the soil retention system serving as a channel to contain the flow of the post-injected grout.	Rolls, 40 in. (1 m) x 100 ft, with a lap extension on both sides to provide continuous membrane between rolls 1 roll per box 6 box/pallet
PREPRUFE® Detail Tape (LT or HC)*	A two-sided, highly aggressive adhesive tape for sealing side laps and other miscellaneous details.	Rolls, 2 in. x 50 ft, 18 rolls per box
PREPRUFE® SCS Geotextile Strip	A semi-permeable geotextile for covering cut edges and roll ends	Rolls, 12 in. x 1000 ft, 1 roll per box
PREPRUFE® CJ Tape (LT or HC)*	A reinforced pressure sensitive tape for sealing cut edges, roll ends, and terminations.	Rolls, 8 in. x 49 ft, 4 rolls per box
SWELLSEAL® WA	A caulk-applied hydro-swelling mastic for sealing around pipe penetrations, rebar, utility conduits, etc.	10.5 oz cartridges, 12 per box
PREPRUFE® 300R Plus membrane	A composite sheet membrane for transitions to other GCP waterproofing systems (top, bottom, sides).	Refer to GCP PREPRUFE® 300R Plus membrane data sheet

Injection Port Assembly Installation

PRODUCT NAME	DESCRIPTION	SUPPLY
PREPRUFE® SCS Injection Base	A specially designed component used to mechanically attach the injection tube to the membrane.	1000 bases per box
PREPRUFE® SCS Injection Tube	A durable, flexible tube used to deliver the grout to the membrane after shotcrete placement.	100 lf coils, 5 coils per box

Grout Injection

PRODUCT NAME	DESCRIPTION	SUPPLY
PREPRUFE® SCS Injection Packer	Button-head, backflow prevention packer used to connect the grout pump to the injection tube.	500 packers per box
PREPRUFE® SCS Hydrophilic Grout Part A	Grout part A for injection into PREPRUFE® SCS Plus Membrane providing ultimate waterproofing protection.	5 gallon pails
PREPRUFE® SCS Hydrophilic Grout Part A Activator	Activator used for Part A to provide for temperature flexibility during installation.	28 fl oz cans
PREPRUFE® SCS Hydrophilic Grout Part B	Grout part B for injection into PREPRUFE® SCS Plus Membrane providing ultimate waterproofing protection.	5 gallon pails
PREPRUFE® SCS Hydrophilic Grout Part B Activator**	Activator used for Part B to provide for temperature flexibility during installation.	2 lb jars

Ancillary Products (if required)

PRODUCT NAME	DESCRIPTION	SUPPLY
PREPRUFE® Tieback Cover	A specially designed, two-part cover used to maintain waterproofing integrity at soil retention tieback heads.	Refer to GCP PREPRUFE® Tieback Cover data sheet
PREPRUFE® Tape (LT or HC)*	A reinforced pressure sensitive tape for sealing PREPRUFE® Tieback Cover.	Rolls, 4 in. x 49 ft, 4 rolls per box
HYDRODUCT® 220 Drainage Composite	A prefabricated geocomposite drain for use as a combined drainage and protection layer.	Refer to GCP HYDRODUCT® 220 data sheet

* LT denotes Low Temperature (between 25 °F (-4 °C) and 86 °F (+30 °C)); HC denotes Hot Climate (50 °F (>+10 °C))

** Part B Activator is shipped as hazmat: corrosive

gcpat.com | North America Customer Service: 1-866-333-3726

We hope the information here will be helpful. It is based on data and knowledge considered to be true and accurate, and is offered for consideration, investigation and verification by the user, but we do not warrant the results to be obtained. Please read all statements, recommendations, and suggestions in conjunction with our conditions of sale, which apply to all goods supplied by us. No statement, recommendation, or suggestion is intended for any use that would infringe any patent, copyright, or other third party right.

HYDRODUCT and PREPRUFE are trademarks, which may be registered in the United States and/or other countries, of GCP Applied Technologies Inc. This trademark list has been compiled using available published information as of the publication date and may not accurately reflect current trademark ownership or status.

© Copyright 2020 GCP Applied Technologies Inc. All rights reserved.

GCP Applied Technologies Inc., 2325 Lakeview Parkway, Suite 400, Alpharetta, GA 30009, USA

GCP Canada, Inc., 294 Clements Road, West, Ajax, Ontario, Canada L1S 3C6

This document is only current as of the last updated date stated below and is valid only for use in the United States. It is important that you always refer to the currently available information at the URL below to provide the most current product information at the time of use. Additional literature such as Contractor Manuals, Technical Bulletins, Detail Drawings and detailing recommendations and other relevant documents are also available on www.gcpat.com. Information found on other websites must not be relied upon, as they may not be up-to-date or applicable to the conditions in your location and we do not accept any responsibility for their content. If there are any conflicts or if you need more information, please contact GCP Customer Service.

Last Updated: 2025-06-19

gcpat.com/solutions/products/preprufe-comprehensive-waterproofing-system/preprufe-scs-plus-data-sheet

PREPRUFE® Tape and PREPRUFE® CJ Tape Data Sheet

View Sustainability Certifications: [Tape LT](#), [Tape HC](#), [CJ Tape HC](#), [CJ Tape LT](#)

Product Description

PREPRUFE® Tape and PREPRUFE® CJ Tape are specially formulated two sided, reinforced pressure sensitive tapes. The bottom side of the tape has a highly aggressive pressure sensitive adhesive which is designed to adhere to penetrations, protrusions and GCP waterproofing membranes and accessories. The top side of the tape has a pressure sensitive adhesive, a weather resistant protective coating and a release liner. Concrete is cast directly against the protective white coating of the tape. The specially developed PREPRUFE® adhesive layers work together to form a continuous and integral seal to the structure.

PREPRUFE® Tape and PREPRUFE® CJ Tape are provided in Low Temperature and Hot Climate Grades as follows:

- PREPRUFE® Tape LT and PREPRUFE® CJ Tape LT - for temperatures between 25°F (-4°C) and 95°F (+35°C).
- PREPRUFE® Tape HC and PREPRUFE® CJ Tape HC - for use in Hot Climates, above 50°F (10°C).

Use

PREPRUFE® Tape is a 4 in. (100 mm) wide tape used in detail areas including end laps, penetrations and various tie-ins. It is also used to patch damaged areas in the PREPRUFE® membranes.

PREPRUFE® CJ Tape is an 8 in. (200 mm) wide tape used at construction joints in the concrete that is cast against it or in critical areas where a wider tape is required.

Application

Wipe substrates to receive PREPRUFE® Tape and PREPRUFE® CJ Tape clean to remove any dirt, dust or moisture. Clean the surface of penetrations or protrusions with a wire brush to remove dirt, dust, rust and loose particles.

Unroll the tape and adhere the exposed pressure sensitive adhesive surface to the membrane or penetration. The protective coating surface of the tape should face toward the concrete to be cast onto the tape.

The use of rollers is required to maximize adhesion. Remove the release liner during application.

Ensure the plastic release liner is removed from all areas of PREPRUFE® Tape and PREPRUFE® CJ Tape. It is recommended that concrete be poured within 56 days (42 days in hot climates) of application of the PREPRUFE® system. Following proper ACI guidelines, concrete must be placed carefully and consolidated properly to avoid damage to the membrane. Never use a sharp object to consolidate the concrete. Provide temporary protection from concrete over splash for areas of the tape that are adjacent to a concrete pour.

DIMENSIONS (NOMINAL)	PREPRUFE [®] TAPE (HC OR LT)	PREPRUFE [®] CJ TAPE (HC OR LT)
Roll Size	4 in. x 49 ft. (100 mm x 15 m)	8 in. x 49 ft. (200 mm x 15 m)
Roll Weight	2.5 lbs (1.2 kg)	5 lbs (2.3 kg)

gcpat.com | North America Customer Service: 1-866-333-3726

We hope the information here will be helpful. It is based on data and knowledge considered to be true and accurate, and is offered for consideration, investigation and verification by the user, but we do not warrant the results to be obtained. Please read all statements, recommendations, and suggestions in conjunction with our conditions of sale, which apply to all goods supplied by us. No statement, recommendation, or suggestion is intended for any use that would infringe any patent, copyright, or other third party right.

PREPRUFE and HYDRODUCT are trademarks, which may be registered in the United States and/or other countries, of GCP Applied Technologies Inc. This trademark list has been compiled using available published information as of the publication date and may not accurately reflect current trademark ownership or status.

© Copyright 2018 GCP Applied Technologies Inc. All rights reserved.

GCP Applied Technologies Inc., 2325 Lakeview Parkway, Suite 400, Alpharetta, GA 30009, USA

GCP Canada, Inc., 294 Clements Road, West, Ajax, Ontario, Canada L1S 3C6

This document is only current as of the last updated date stated below and is valid only for use in the United States. It is important that you always refer to the currently available information at the URL below to provide the most current product information at the time of use. Additional literature such as Contractor Manuals, Technical Bulletins, Detail Drawings and detailing recommendations and other relevant documents are also available on www.gcpat.com. Information found on other websites must not be relied upon, as they may not be up-to-date or applicable to the conditions in your location and we do not accept any responsibility for their content. If there are any conflicts or if you need more information, please contact GCP Customer Service.

Last Updated: 2025-05-13

gcpat.com/solutions/products/preprufe-comprehensive-waterproofing-system/preprufe-tape-and-preprufe-cj-tape

1. Identification

Product identifier Preprufe® SCS Plus Membrane

Other means of identification

Synonyms Waterproofing membrane

Recommended use Construction Materials

Recommended restrictions No other uses are advised.

Manufacturer/Importer/Supplier/Distributor information

Manufacturer

Company name GCP
Address 20 Moores Rd.
 Malvern, PA 19355
 United States

Telephone +1 866-333-3726

Website www.gcpat.com

E-mail Not available.

Emergency phone number 3E Global Incident Hotline
 1 760 476 3962
 1 866 519 4752 (Toll Free)
 Access Code: 336250

2. Hazard(s) identification

Physical hazards Not classified.

Health hazards Not classified.

Environmental hazards Not classified.

OSHA defined hazards Not classified.

Label elements

Hazard symbol None.

Signal word None.

Hazard statement This product is considered an article and does not meet the criteria for classification.

Precautionary statement

Prevention Observe good industrial hygiene practices.

Response Wash hands after handling.

Storage Store away from incompatible materials.

Disposal Dispose of waste and residues in accordance with local authority requirements.

Hazard(s) not otherwise classified (HNOC) None known.

Supplemental information Processing at high temperatures or grinding may release dust/fumes which may be irritating to the eyes, skin, and respiratory systems.

3. Composition/information on ingredients

Mixtures

Chemical name	Common name and synonyms	CAS number	%
Distillates (petroleum), Hydrotreated Heavy Naphthenic		64742-52-5	5 - 10
[2-Hydroxy-4-(octyloxy)phenyl]phenyl Imethanone		1843-05-6	0.1 - 1

Chemical name	Common name and synonyms	CAS number	%
Bis (1, 2, 2, 6, 6-pentamethyl-4-piperidyl)		41556-26-7	0.1 - 1

Composition comments The exact concentrations of the above listed chemicals are being withheld as a trade secret. All concentrations are in percent by weight.

Non-classification as a carcinogen is based on the non-respirable form of the product.

4. First-aid measures

Inhalation	Respiration of particles is unlikely during normal use. Move to fresh air. Call a physician if symptoms develop or persist.
Skin contact	Wash off with soap and water. Get medical attention if irritation develops and persists.
Eye contact	Unlikely route of exposure. Rinse with water. Get medical attention if irritation develops and persists.
Ingestion	Unlikely route of exposure.
Most important symptoms/effects, acute and delayed	None known.
Indication of immediate medical attention and special treatment needed	Treat symptomatically.
General information	Ensure that medical personnel are aware of the material(s) involved, and take precautions to protect themselves.

5. Fire-fighting measures

Suitable extinguishing media	Use fire-extinguishing media appropriate for surrounding materials.
Unsuitable extinguishing media	Do not use water jet as an extinguisher, as this will spread the fire.
Specific hazards arising from the chemical	During fire, gases hazardous to health may be formed.
Special protective equipment and precautions for firefighters	Self-contained breathing apparatus and full protective clothing must be worn in case of fire.
Fire fighting equipment/instructions	Not applicable.
Specific methods	Use standard firefighting procedures and consider the hazards of other involved materials.
General fire hazards	No unusual fire or explosion hazards noted.

6. Accidental release measures

Personal precautions, protective equipment and emergency procedures	Ensure adequate ventilation. Keep unnecessary personnel away. For personal protection, see section 8 of the SDS.
Methods and materials for containment and cleaning up	Pick up mechanically; Send for recovery or disposal in suitable receptacles. For waste disposal, see section 13 of the SDS.
Environmental precautions	Avoid release to the environment.

7. Handling and storage

Precautions for safe handling	Provide adequate ventilation. Observe good industrial hygiene practices.
Conditions for safe storage, including any incompatibilities	Store away from incompatible materials (see Section 10 of the SDS).

8. Exposure controls/personal protection

Occupational exposure limits

The following constituents are the only constituents of the product which have a PEL, TLV or other recommended exposure limit. At this time, the other constituents have no known exposure limits.

US. OSHA Table Z-1 Permissible Exposure Limits (PEL) for Air Contaminants (29 CFR 1910.1000)

Components	Type	Value	Form
Distillates (petroleum), Hydrotreated Heavy Naphthenic (CAS 64742-52-5)	PEL	5 mg/m3	Mist.
		2000 mg/m3	
		500 ppm	

US. ACGIH Threshold Limit Values (TLV)

Components	Type	Value	Form
Distillates (petroleum), Hydrotreated Heavy Naphthenic (CAS 64742-52-5)	TWA	5 mg/m3	Inhalable fraction.

NIOSH. Immediately Dangerous to Life or Health (IDLH) Values, as amended

Components	Type	Value
Distillates (petroleum), Hydrotreated Heavy Naphthenic (CAS 64742-52-5)	IDLH	2500 mg/m3

US. NIOSH: Pocket Guide to Chemical Hazards Recommended Exposure Limits (REL)

Components	Type	Value	Form
Distillates (petroleum), Hydrotreated Heavy Naphthenic (CAS 64742-52-5)	Ceiling	1800 mg/m3	
	STEL	10 mg/m3	Mist.

Biological limit values

No biological exposure limits noted for the ingredient(s).

Appropriate engineering controls

Good general ventilation should be used. Ventilation rates should be matched to conditions. If applicable, use process enclosures, local exhaust ventilation, or other engineering controls to maintain airborne levels below recommended exposure limits. If exposure limits have not been established, maintain airborne levels to an acceptable level.

Individual protection measures, such as personal protective equipment

Eye/face protection Wear safety glasses with side shields (or goggles).

Skin protection

Hand protection Wear protective gloves.

Other

Normal work clothing (long sleeved shirts and long pants) is recommended.

Respiratory protection

Inhalation of dusts produced during cutting, grinding or sanding of this product may cause irritation of the respiratory tract
Dust mask recommended.

Thermal hazards

Not applicable.

General hygiene considerations

Always observe good personal hygiene measures, such as washing after handling the material and before eating, drinking, and/or smoking. Routinely wash work clothing and protective equipment to remove contaminants.

9. Physical and chemical properties**Appearance**

Physical state Solid.

Form Roll.

Color Grey

Odor Odorless.

Odor threshold Not available.

pH	Not available.
Melting point/freezing point	Not available.
Initial boiling point and boiling range	Not available.
Flash point	Not available.
Evaporation rate	Not available.
Flammability (solid, gas)	Not available.
Upper/lower flammability or explosive limits	
Explosive limit - lower (%)	Not available.
Explosive limit - upper (%)	Not available.
Vapor pressure	Not available.
Vapor density	Not available.
Relative density	Not available.
Solubility(ies)	
Solubility (water)	Not soluble.
Partition coefficient (n-octanol/water)	Not available.
Auto-ignition temperature	Not available.
Decomposition temperature	Not available.
Viscosity	Not available.
Other information	
Explosive properties	Not explosive.
Oxidizing properties	Not oxidizing.

10. Stability and reactivity

Reactivity	The product is stable and non-reactive under normal conditions of use, storage and transport.
Chemical stability	Material is stable under normal conditions.
Possibility of hazardous reactions	No dangerous reaction known under conditions of normal use.
Conditions to avoid	Contact with incompatible materials.
Incompatible materials	None known.
Hazardous decomposition products	No hazardous decomposition products are known.

11. Toxicological information

Information on likely routes of exposure

Inhalation	Under normal conditions of intended use, this material is not expected to be an inhalation hazard.
Skin contact	No adverse effects due to skin contact are expected.
Eye contact	Dust may irritate the eyes.
Ingestion	Expected to be a low ingestion hazard.

Symptoms related to the physical, chemical and toxicological characteristics	None known.
---	-------------

Information on toxicological effects

Acute toxicity	Not known.
-----------------------	------------

Components	Species	Test Results
[2-Hydroxy-4-(octyloxy)phenyl]phenylmethanone (CAS 1843-05-6)		
Acute		
Dermal		
LD50	Rabbit	> 10 g/kg
Oral		
LD50	Rat	> 10000 mg/kg
Skin corrosion/irritation	Not applicable.	
Serious eye damage/eye irritation	Dust in the eyes will cause irritation.	
Respiratory or skin sensitization		
Respiratory sensitization	Not a respiratory sensitizer.	
Skin sensitization	This product is not expected to cause skin sensitization.	
Germ cell mutagenicity	No data available to indicate product or any components present at greater than 0.1% are mutagenic or genotoxic.	
Carcinogenicity	Reference to chemical component(s) listed are based on unbound respirable particles and are not generally applicable to product as supplied.	
IARC Monographs. Overall Evaluation of Carcinogenicity		
Distillates (petroleum), Hydrotreated Heavy Naphthenic (CAS 64742-52-5)	3	Not classifiable as to carcinogenicity to humans.
OSHA Specifically Regulated Substances (29 CFR 1910.1001-1053)		
Not listed.		
US. National Toxicology Program (NTP) Report on Carcinogens		
Not listed.		
Reproductive toxicity	This product is not expected to cause reproductive or developmental effects.	
Specific target organ toxicity - single exposure	Not classified.	
Specific target organ toxicity - repeated exposure	Not classified.	
Aspiration hazard	Not an aspiration hazard.	
Chronic effects	Not applicable.	

12. Ecological information

This article is expected to present a low environmental risk either because use and disposal are unlikely to result in a significant release of components to the environment or because those components that may be released are expected to have insignificant environmental impact.

13. Disposal considerations

Disposal instructions	Dispose of this material and its container to hazardous or special waste collection point. Incinerate the material under controlled conditions in an approved incinerator. Do not incinerate sealed containers. If discarded, this product is considered a RCRA ignitable waste, D001.
Local disposal regulations	Dispose in accordance with all applicable regulations.
Hazardous waste code	D001: Waste Flammable material with a flash point <140 F The waste code should be assigned in discussion between the user, the producer and the waste disposal company.
Waste from residues / unused products	Dispose of in accordance with local regulations. Empty containers or liners may retain some product residues. This material and its container must be disposed of in a safe manner.
Contaminated packaging	Since emptied containers may retain product residue, follow label warnings even after container is emptied. Empty containers should be taken to an approved waste handling site for recycling or disposal.

14. Transport information

DOT

Not regulated as dangerous goods.

IATA

Not regulated as dangerous goods.

IMDG

Not regulated as dangerous goods.

Transport in bulk according to Annex II of MARPOL 73/78 and the IBC Code Not applicable.

15. Regulatory information

US federal regulations This product is not known to be a "Hazardous Chemical" as defined by the OSHA Hazard Communication Standard, 29 CFR 1910.1200.

Toxic Substances Control Act (TSCA) All components of the mixture on the TSCA 8(b) inventory are designated "active".

TSCA Section 12(b) Export Notification (40 CFR 707, Subpt. D)

Not regulated.

CERCLA Hazardous Substance List (40 CFR 302.4)

Not listed.

SARA 304 Emergency release notification

Not regulated.

OSHA Specifically Regulated Substances (29 CFR 1910.1001-1053)

Not listed.

Superfund Amendments and Reauthorization Act of 1986 (SARA)

SARA 302 Extremely hazardous substance

Not listed.

SARA 311/312 Hazardous chemical Yes

Classified hazard categories Serious eye damage or eye irritation
Respiratory or skin sensitization

SARA 313 (TRI reporting)

Not regulated.

Other federal regulations

Clean Air Act (CAA) Section 112 Hazardous Air Pollutants (HAPs) List

Not regulated.

Clean Air Act (CAA) Section 112(r) Accidental Release Prevention (40 CFR 68.130)

Not regulated.

Safe Drinking Water Act (SDWA) Not regulated.

US state regulations

California Proposition 65



WARNING: This product can expose you to Distillates (petroleum), Hydrotreated Heavy Naphthenic, which is known to the State of California to cause cancer. For more information go to www.P65Warnings.ca.gov.

International Inventories

Country(s) or region	Inventory name	On inventory (yes/no)*
Australia	Australian Inventory of Industrial Chemicals (AICIS)	Yes
Canada	Domestic Substances List (DSL)	Yes
Canada	Non-Domestic Substances List (NDSL)	No
China	Inventory of Existing Chemical Substances in China (IECSC)	Yes

Country(s) or region	Inventory name	On inventory (yes/no)*
Europe	European Inventory of Existing Commercial Chemical Substances (EINECS)	Yes
Europe	European List of Notified Chemical Substances (ELINCS)	No
Japan	Inventory of Existing and New Chemical Substances (ENCS)	Yes
Korea	Existing Chemicals List (ECL)	Yes
New Zealand	New Zealand Inventory	Yes
Philippines	Philippine Inventory of Chemicals and Chemical Substances (PICCS)	Yes
Taiwan	Taiwan Chemical Substance Inventory (TCSI)	Yes
United States & Puerto Rico	Toxic Substances Control Act (TSCA) Inventory	Yes

*A "Yes" indicates that all components of this product comply with the inventory requirements administered by the governing country(s)
A "No" indicates that one or more components of the product are not listed or exempt from listing on the inventory administered by the governing country(s).

16. Other information, including date of preparation or last revision

Issue date	04-29-2025
Version #	01
Disclaimer	GCP cannot anticipate all conditions under which this information and its product, or the products of other manufacturers in combination with its product, may be used. It is the user's responsibility to ensure safe conditions for handling, storage and disposal of the product, and to assume liability for loss, injury, damage or expense due to improper use. The information in the sheet was written based on the best knowledge and experience currently available.

1 Identification

Product identifier

Trade name: ***PREPRUFE® Tapes (All Products)***

SDS ID Number: 153

Relevant identified uses of the substance or mixture, and uses advised against:

Waterproofing.

Specialty construction product. Not intended for other uses.

Details of the supplier of the safety data sheet

Manufacturer/Supplier:

GCP Applied Technologies
62 Whittemore Avenue
Cambridge, MA 02140 USA

GCP Canada, Inc.
294 Clements Road W.
Ajax, Ontario L1S 3C6 Canada

Information department:

Environmental Health & Safety
USA: +1-617-876-1400 (24 hours)
+1-800-354-5414 (8AM - 5PM) Not functional within Massachusetts
CAN: 1-905-683-8561 (24 hours)
Email address: msds.gcp@gcpat.com

Transport Emergency: Chemtrec +1-800-424-9300 (24 hours)

2 Hazard(s) identification

Classification of the substance or mixture

The product is not classified, according to the Globally Harmonized System (GHS).

Additional information:

SDS's are not required for finished articles. nevertheless, the following information is provided to assist with safe use.

Label elements:

Hazard pictograms Not applicable.

Not applicable.

Hazard statements Not applicable.

NFPA ratings (scale 0 - 4)



Health = 0
Fire = 1
Reactivity = 0

HMIS-ratings (scale 0 - 4)



Health = 0
Flammability = 1
Reactivity = 0

Other hazards Contact with residue from adhesive may cause eye and skin irritation.

Safety Data Sheet

Printing date 08/22/2019

Version Number 1.0

Reviewed on 08/22/2019

Trade name: **PREPRUFE® Tapes (All Products)**

(Cont. from page 1)

Results of PBT and vPvB assessment**PBT:** Not applicable.**vPvB:** Not applicable.**3 Composition/information on ingredients****Chemical characterization: Mixture****Hazardous components:** Not applicable.**Additional information:** Non-hazardous ingredients may be listed in Section 15; Right-To-Know disclosure.**4 First-aid measures****Description of first aid measures****General information:** Get medical advice/attention if you feel unwell.**After inhalation:** No special measures required.**After skin contact:** If skin irritation occurs, consult a doctor.**After eye contact:**

Rinse cautiously with water for several minutes.

If symptoms persist, consult a physician.

After swallowing:

Rinse mouth.

Do NOT induce vomiting.

Information for doctor:**Most important symptoms and effects, both acute and delayed** No further relevant information available.**Indication of any immediate medical attention and special treatment needed** No further relevant information available.**5 Fire-fighting measures****Special hazards arising from the substance or mixture** No further relevant information available.**Additional information** Collect contaminated fire fighting water separately. It must not enter the sewage system.**6 Accidental release measures****Personal precautions, protective equipment and emergency procedures**

Wear protective equipment. Keep unprotected persons away.

Methods and material for containment and cleaning up: Pick up mechanically.**Reference to other sections**

See Section 7 for information on safe handling.

See Section 8 for information on personal protection equipment.

See Section 13 for disposal information.

USGHS

(Cont. on page 3)

Safety Data Sheet

Printing date 08/22/2019

Version Number 1.0

Reviewed on 08/22/2019

Trade name: **PREPRUFE® Tapes (All Products)**

(Cont. from page 2)

7 Handling and storage**Handling:****Precautions for safe handling**

Wash thoroughly after handling.

Avoid eye and skin contact with residue from adhesive.

Release liners are slippery. Remove from work area immediately after membrane application.

Membrane is slippery when wet or covered with frost.

Release liners may cause slip and trip hazards.

Do not eat, drink or smoke when using this product.

Wash skin after handling.

For professional use only. Keep out of children's reach.

Information about protection against explosions and fires:

Removal of release liner may generate a static electrical discharge (spark).

Conditions for safe storage, including any incompatibilities**Storage:****Information about storage in one common storage facility:** No special measures required.**Further information about storage conditions:** Keep receptacle tightly sealed.**Specific end use(s)** No further relevant information available.**8 Exposure controls/personal protection****Additional information about design of technical systems:** No further data; see item 7.**Control parameters****Components with limit values that require monitoring at the workplace:**

The product does not contain any relevant quantities of materials with critical values that have to be monitored at the workplace.

Additional information: The lists that were valid during the creation were used as basis.**Exposure controls****Personal protective equipment:****General protective and hygienic measures:**

Avoid contact with the eyes and skin.

The usual precautionary measures for handling chemicals should be followed.

Breathing equipment:

Control exposure to ingredients with workplace control parameters if mentioned above. If no ingredients are listed, respiratory protection is generally not required.

If exposure limits are listed and may be exceeded, use approved respiratory protective equipment and filter type appropriate for the listed ingredients. (NIOSH, CEN, etc.).

Protection of hands: Gloves should be worn to prevent skin contact and should be impermeable and resistant to the product.**Material of gloves** Rubber or other impervious gloves should be worn to prevent skin contact.**Eye protection:**

Safety glasses with side shield protection.

(Cont. on page 4)

USGHS

Safety Data Sheet

Printing date 08/22/2019

Version Number 1.0

Reviewed on 08/22/2019

Trade name: **PREPRUFE® Tapes (All Products)**

(Cont. from page 3)

Body protection:

Use personal protective equipment as required.

Take off contaminated clothing.

9 Physical and chemical properties**Information on basic physical and chemical properties****General Information****Appearance:**

Form:	Solid
Color:	According to product specification
Odor:	Characteristic
Odor threshold:	Not determined.

pH-value (~): Not applicable.**Change in condition**

Melting point/Melting range:	Undetermined.
Boiling point/Boiling range:	Undetermined.
Flash point:	Not applicable.

Flammability (solid, gaseous): Not determined.**Ignition temperature:** Undetermined.**Decomposition temperature:** Not determined.**Auto igniting:** Not determined.**Danger of explosion:** Product does not present an explosion hazard.**Explosion limits:**

Lower:	Not determined.
Upper:	Not determined.
VOC Content (max):	Not determined.

Vapor pressure: Not applicable.**Density: (~) at 20 °C (68 °F)** 1 g/cm³ (8.3 lbs/gal)**Relative density** Not determined.**Vapor density** Not determined.**Solubility in / Miscibility with****Water:** Not miscible or difficult to mix.**Partition coefficient (n-octanol/water):** Not determined.**Viscosity:****Dynamic:** Not applicable.**Kinematic:** Not applicable.**Molecular weight** Not applicable.**Other information**

No further relevant information available.

10 Stability and reactivity**Reactivity**

Stable under normal conditions.

No further relevant information available.

Chemical stability**Thermal decomposition:** No decomposition if used according to specifications.

(Cont. on page 5)

USGHS

Safety Data Sheet

Printing date 08/22/2019

Version Number 1.0

Reviewed on 08/22/2019

Trade name: **PREPRUFE® Tapes (All Products)**

(Cont. from page 4)

Possibility of hazardous reactions

No dangerous reactions known.

No further relevant information available.

Conditions to avoid No further relevant information available.**Incompatible materials:** No further relevant information available.**Hazardous decomposition products:** Carbon monoxide and carbon dioxide* **11 Toxicological information****Information on toxicological effects****Acute toxicity:****Primary irritant effect:****on the skin:** No irritating effect expected**on the eye:** No irritating effect expected**inhalation:** No irritating effect expected**Additional toxicological information:****Carcinogenic categories****IARC (International Agency for Research on Cancer) Human Carcinogenicity:**
Group 1- Positive, Group 2A- Probable, Group 2B- Possible, Group 3- Not Classifiable

None of the ingredients are listed.

NTP (National Toxicology Program)**K–Known to be carcinogenic, R–May reasonably be anticipated to be carcinogenic**

None of the ingredients are listed.

OSHA-Ca (Occupational Safety & Health Administration)

None of the ingredients are listed.

* **12 Ecological information****Toxicity****Aquatic toxicity:** No further relevant information available.**Persistence and degradability** No further relevant information available.**Behavior in environmental systems:****Bioaccumulative potential** No further relevant information available.**Mobility in soil** No further relevant information available.**Additional ecological information:****General notes:** Not known to be hazardous to water.**Results of PBT and vPvB assessment****PBT:** Not applicable.**vPvB:** Not applicable.**Other adverse effects** No further relevant information available.

USGHS

(Cont. on page 6)

Safety Data Sheet

Printing date 08/22/2019

Version Number 1.0

Reviewed on 08/22/2019

Trade name: **PREPRUFE® Tapes (All Products)**

(Cont. from page 5)

* **13 Disposal considerations****Disposal methods:**

Consult all regulations (federal, state, provincial, local) or a qualified waste disposal firm when characterizing product for disposal. Dispose of waste in accordance with all applicable regulations.

Recommendation:

Must not be disposed of together with household garbage. Do not allow product to reach sewage system.

Uncleaned packagings:

Recommendation: Dispose of contents/container in accordance with local/regional/national/international regulations.

* **14 Transport information****UN-Number**

DOT, IMDG, IATA

Not applicable.

UN proper shipping name

DOT, IMDG, IATA

Not applicable.

Transport hazard class(es)

DOT, IMDG, IATA

Class

Not applicable.

Packing group

DOT, IMDG, IATA

Not applicable.

Environmental hazards:

Marine pollutant:

No

Special precautions for user

Not applicable.

Transport/Additional information: Not classified as a dangerous good for transport by road, rail or air.

DOT

Remarks:

Not Regulated.

UN "Model Regulation":

Not applicable.

* **15 Regulatory information****SARA (Superfund Amendments and Reauthorization Act)****Section 302/304 (extremely hazardous substances):**

None of the ingredients is listed.

Section 313 Reportable Ingredients (Chemicals present below reporting threshold are exempt):

None of the ingredients is listed.

SARA Section 312/Tier I & II Hazard Categories: None**North America Chemical Inventory Status****TSCA (Toxic Substances Control Act - United States):**

All ingredients are listed or exempt from listing unless otherwise noted below.

CEPA (Canadian DSL):

All ingredients are listed or exempt from listing unless otherwise noted below.

(Cont. on page 7)

USGHS

Safety Data Sheet

Printing date 08/22/2019

Version Number 1.0

Reviewed on 08/22/2019

Trade name: **PREPRUFE® Tapes (All Products)**

(Cont. from page 6)

Right to Know Ingredient Disclosure:

Non-hazardous ingredients

California Proposition 65: (Substances <0.1% unless noted in Section 3)**Chemicals known to cause cancer:**

None of the ingredients is listed.

Chemicals known to cause reproductive toxicity for females:

None of the ingredients are listed.

Chemicals known to cause reproductive toxicity for males:

None of the ingredients are listed.

Chemicals known to cause developmental toxicity:

None of the ingredients are listed.

Carcinogenicity Categories**TLV-ACGIH (THE American Conference of Governmental Industrial Hygienists)****Human Carcinogen - A1 Confirmed, A2 Suspected, A3 Unknown Relevance, A4 Not Classifiable**

None of the ingredients are listed.

NIOSH-Cancer (National Institute for Occupational Safety and Health)

None of the ingredients are listed.

Volatile Organic Compounds (VOC) reported per the Emission Standards.

If no g/L value is provided this product is not subject to above standard.

*

16 Other information

The data included herein are presented in accordance with various environment, health and safety regulations. It is the responsibility of a recipient of the data to remain currently informed on chemical hazard information, to design and update its own program and to comply with all national, federal, state and local laws and regulations applicable to safety, occupational health, right-to-know and environmental protection.

Department issuing SDS:

GCP Applied Technologies

62 Whittemore Avenue

Cambridge, MA 02140 USA

USA: +1-617-876-1400 (24 hours)

+1-800-354-5414

Other Information:

This SDS is for the following products: PREPRUFE® Detail Tape, PREPRUFE® Tape LT, PREPRUFE® Tape HC, PREPRUFE® CJ Tape LT, & PREPRUFE® CJ Tape HC.

The first date of preparation 03/15/2019**Number of revision times and the latest revision date** 1.0 / 08/22/2019

USGHS

Safety Data Sheet

Printing date 06/15/2023

Version Number 1.0

Reviewed on 06/15/2023

1 Identification

Product identifier

Trade name: ***PREPRUFE® SCS Hydrophilic Grout Part A***

SDS ID Number: 46303

Relevant identified uses of the substance or mixture, and uses advised against:
Specialty construction product. Not intended for other uses.

Details of the supplier of the safety data sheet

Manufacturer/Supplier:

GCP Applied Technologies
2325 Lakeview Pkwy
Alpharetta GA 30009 USA

GCP Canada, Inc.
294 Clements Road W.
Ajax, Ontario L1S 3C6 Canada

Information department:

Environmental Health & Safety
USA: +1-617-876-1400 (24 hours)
+1-800-354-5414 (8AM - 5PM) Not functional within Massachusetts
CAN: 1-905-683-8561 (24 hours)
Email address: msds.gcp@gcpat.com

Emergency telephone number:

For Chemical Emergency: (Spill, Leak, Fire, Exposure or Accident) - Call CHEMTREC (Day/Night) on:

Within USA & Canada : 800-424-9300,
Outside USA & Canada : +1 703-741-5970

National emergency telephone number: CHEMTREC Switzerland +(41)-435082011

Transport Emergency: Chemtrec +1-800-424-9300 (24 hours)

2 Hazard(s) identification

Classification of the substance or mixture

May cause an allergic skin reaction.

Label elements: The product is classified and labeled according to the Globally Harmonized System (GHS)

Hazard pictograms



Warning

Hazard statements

May cause an allergic skin reaction.

Precautionary statements

Avoid breathing dust/fume/gas/mist/vapors/spray
Contaminated work clothing should not be allowed out of the workplace.
Wear protective gloves.
If on skin: Wash with plenty of water.

Safety Data Sheet

Printing date 06/15/2023

Version Number 1.0

Reviewed on 06/15/2023

Trade name: **PREPRUFE® SCS Hydrophilic Grout Part A**

(Cont. from page 1)

If skin irritation or rash occurs: Get medical advice/attention.
 Wash contaminated clothing before reuse.
 Dispose of contents/container in accordance with local/regional/national/international regulations.

Hazard description:

NFPA ratings (scale 0 - 4)



Health = 1
 Fire = 1
 Reactivity = 0

HMIS-ratings (scale 0 - 4)



Health = 1
 Flammability = 1
 Reactivity = 0

Other hazards

Results of PBT and vPvB assessment

PBT: Not applicable.

vPvB: Not applicable.

3 Composition/information on ingredients**Chemical characterization: Mixture**

Description: Mixture of the hazardous substance(s) listed below with additional nonhazardous ingredients.

Hazardous components:

868-77-9	2-hydroxyethyl methacrylate	0.1-<1%
26570-48-9	Poly(oxy-1,2-ethanediyl), .alpha.-(1-oxo-2-propenyl)-.omega.-[(1-oxo- 2-propenyl)oxy]-	0.1-<1%

Additional information: Non-hazardous ingredients may be listed in Section 15; Right-To-Know disclosure.

4 First-aid measures**Description of first aid measures**

General information: Get medical advice/attention if you feel unwell.

After inhalation: IF INHALED: Remove person to fresh air and keep comfortable for breathing.

After skin contact:

Immediately wash contaminated skin with soap or mild detergent and water. If this chemical soaks clothing, immediately remove clothing and wash skin.

Do not use solvents or thinners to clean skin.

After eye contact: Rinse cautiously with water for several minutes.

After swallowing:

Rinse mouth.

Do NOT induce vomiting.

Information for doctor:

Most important symptoms and effects, both acute and delayed Allergic reactions

Indication of any immediate medical attention and special treatment needed No further relevant information available.

USGHS

(Cont. on page 3)

Safety Data Sheet

Printing date 06/15/2023

Version Number 1.0

Reviewed on 06/15/2023

Trade name: **PREPRUFE® SCS Hydrophilic Grout Part A**

(Cont. from page 2)

5 Fire-fighting measures**Extinguishing media**

Suitable extinguishing agents: CO₂, extinguishing powder or water spray. Fight larger fires with water spray.

Special hazards arising from the substance or mixture

Combustion products may include toxic gases such as carbon monoxide and smoke.

Advice for firefighters

Protective equipment: Wear personal protective equipment.

Additional information

Collect contaminated fire fighting water separately. It must not enter the sewage system.

Do not breathe smoke and gasses created by overheating or burning material.

Decomposition products can be highly toxic and irritating.

Firefighters should wear self-contained breathing apparatus and appropriate firefighting protective equipment.

6 Accidental release measures**Personal precautions, protective equipment and emergency procedures**

Wear protective equipment. Keep unprotected persons away.

Methods and material for containment and cleaning up:

Dispose of the collected material according to regulations.

Reference to other sections

See Section 7 for information on safe handling.

See Section 8 for information on personal protection equipment.

See Section 13 for disposal information.

7 Handling and storage**Handling:****Precautions for safe handling**

Prevent formation of aerosols.

Avoid contact with skin and eyes.

Wear appropriate eye and skin protection.

Wash thoroughly after handling.

Decomposition products can be highly toxic. Do not heat or burn this material. Closed containers may explode due to exothermic reaction if product is contaminated with water.

Information about protection against explosions and fires: No special measures required.

Conditions for safe storage, including any incompatibilities**Storage:****Information about storage in one common storage facility:**

Store in tightly closed containers to prevent moisture contamination. Do not reseal if contamination is suspected.

Further information about storage conditions: Keep receptacle tightly sealed.

Specific end use(s) No further relevant information available.

USGHS

(Cont. on page 4)

Safety Data Sheet

Printing date 06/15/2023

Version Number 1.0

Reviewed on 06/15/2023

Trade name: **PREPRUFE® SCS Hydrophilic Grout Part A**

(Cont. from page 3)

8 Exposure controls/personal protection**Additional information about design of technical systems:** No further data; see item 7.**Control parameters****Components with limit values that require monitoring at the workplace:**

The product does not contain any relevant quantities of materials with critical values that have to be monitored at the workplace.

Additional information:

The lists that were valid during the creation were used as basis.

Canadian employers must consult the exposure limits in their province.

Exposure controls**Personal protective equipment:****General protective and hygienic measures:** The usual precautionary measures for handling chemicals should be followed.**Breathing equipment:**

Control exposure to ingredients with workplace control parameters if mentioned above. If no ingredients are listed, respiratory protection is generally not required.

If exposure limits are listed and may be exceeded, use approved respiratory protective equipment and filter type appropriate for the listed ingredients. (NIOSH, CEN, etc.).

Protection of hands: Gloves should be worn to prevent skin contact and should be impermeable and resistant to the product.**Material of gloves** Rubber or other impervious gloves should be worn to prevent skin contact.**Eye protection:**

Safety glasses with side shield protection.

Body protection:

Use personal protective equipment as required.

Take off contaminated clothing.

9 Physical and chemical properties**Information on basic physical and chemical properties****General Information****Appearance:**

Form:	Liquid
Color:	According to product specification
Odor:	Characteristic
Odor threshold:	Not determined.

pH-value (~) at 20 °C (68 °F): 7**Change in condition**

Melting point/Melting range:	Undetermined.
Boiling point/Boiling range:	>100 °C (>212 °F)
Flash point:	>100 °C (>212 °F)

Flammability (solid, gaseous): Not applicable.**Ignition temperature:** Undetermined.**Decomposition temperature:** Not determined.**Auto igniting:** Product is not self-igniting.**Danger of explosion:** Product does not present an explosion hazard.

(Cont. on page 5)

USGHS

Safety Data Sheet

Printing date 06/15/2023

Version Number 1.0

Reviewed on 06/15/2023

Trade name: **PREPRUFE® SCS Hydrophilic Grout Part A**

(Cont. from page 4)

Explosion limits:**Lower:**

Not applicable.

Upper:

Not applicable.

Vapor pressure:

Not determined.

Density: (~) at 20 °C (68 °F)1.2 g/cm³ (10 lbs/gal)**Vapor density**

Not determined.

Evaporation rate

Not applicable.

Solubility in / Miscibility with**Water:**

Not miscible or difficult to mix.

Partition coefficient (n-octanol/water): Not determined.**Viscosity:****Dynamic:**

Not determined.

Kinematic:

Not determined.

Molecular weight

Not determined.

Other information

No further relevant information available.

10 Stability and reactivity**Reactivity**

Stable under normal conditions.

No further relevant information available.

Chemical stability**Thermal decomposition:** No decomposition if used according to specifications.**Possibility of hazardous reactions**

No dangerous reactions known.

No further relevant information available.

Conditions to avoid No further relevant information available.**Incompatible materials:** No further relevant information available.**Hazardous decomposition products:** Carbon monoxide and carbon dioxide**11 Toxicological information****Information on toxicological effects****Acute toxicity:****Primary irritant effect:****on the skin:** No irritating effect expected**on the eye:** No irritating effect expected**inhalation:** No irritating effect expected**Sensitization:** May cause an allergic skin reaction.**Additional toxicological information:****Carcinogenic categories****IARC (International Agency for Research on Cancer) Human Carcinogenicity:****Group 1- Positive, Group 2A- Probable, Group 2B- Possible, Group 3- Not Classifiable**

None of the ingredients are listed.

(Cont. on page 6)

USGHS

Safety Data Sheet

Printing date 06/15/2023

Version Number 1.0

Reviewed on 06/15/2023

Trade name: **PREPRUFE® SCS Hydrophilic Grout Part A**

(Cont. from page 5)

NTP (National Toxicology Program)**K–Known to be carcinogenic, R–May reasonably be anticipated to be carcinogenic**

None of the ingredients are listed.

OSHA-Ca (Occupational Safety & Health Administration)

None of the ingredients are listed.

12 Ecological information**Toxicity****Aquatic toxicity:** No further relevant information available.**Persistence and degradability** No further relevant information available.**Behavior in environmental systems:****Bioaccumulative potential** No further relevant information available.**Mobility in soil** No further relevant information available.**Additional ecological information:****General notes:** Not known to be hazardous to water.**Results of PBT and vPvB assessment****PBT:** Not applicable.**vPvB:** Not applicable.**13 Disposal considerations****Disposal methods:**

Consult all regulations (federal, state, provincial, local) or a qualified waste disposal firm when characterizing product for disposal. Dispose of waste in accordance with all applicable regulations.

Recommendation:

Must not be disposed of together with household garbage. Do not allow product to reach sewage system.

Uncleaned packagings:**Recommendation:** Dispose of contents/container in accordance with local/regional/national/international regulations.**14 Transport information****UN-Number**

DOT, IMDG, IATA Not applicable.

UN proper shipping name

DOT, IMDG, IATA Not applicable.

Transport hazard class(es)

DOT, IMDG, IATA

Class Not applicable.

Packing group

DOT, IMDG, IATA Not applicable.

(Cont. on page 7)

USGHS

Safety Data Sheet

Printing date 06/15/2023

Version Number 1.0

Reviewed on 06/15/2023

Trade name: **PREPRUFE® SCS Hydrophilic Grout Part A**

(Cont. from page 6)

Environmental hazards: Not applicable.**Special precautions for user** Not applicable.**Transport/Additional information:****DOT****Remarks:** Not Regulated.**15 Regulatory information****Other regulations in domestic and foreign countries****SARA (Superfund Amendments and Reauthorization Act)****Section 302/304 (extremely hazardous substances):**

None of the ingredients is listed.

Section 313 Reportable Ingredients (Chemicals present below reporting threshold are exempt):

None of the ingredients is listed.

SARA Section 312/Tier I & II Hazard Categories: Health Hazard - Respiratory or Skin Sensitization**North America Chemical Inventory Status****TSCA (Toxic Substances Control Act - United States):**

All ingredients are listed or exempt from listing unless otherwise noted below.

CEPA (Canadian DSL):

All ingredients are listed or exempt from listing unless otherwise noted below.

Right to Know Ingredient Disclosure:

7732-18-5 Water

Proprietary Short chain organic acid salt - NJTSN 801416095

26915-72-0 Methoxypropylenglycol methacrylate

California Proposition 65: (Substances <0.1% unless noted in Section 3)**Chemicals known to cause cancer:**

None of the ingredients is listed.

Chemicals known to cause reproductive toxicity for females:

None of the ingredients are listed.

Chemicals known to cause reproductive toxicity for males:

None of the ingredients are listed.

Chemicals known to cause developmental toxicity:

None of the ingredients are listed.

Carcinogenicity Categories**TLV-ACGIH (THE American Conference of Governmental Industrial Hygienists)****Human Carcinogen - A1 Confirmed, A2 Suspected, A3 Unknown Relevance, A4 Not Classifiable**

None of the ingredients are listed.

NIOSH-Cancer (National Institute for Occupational Safety and Health)

None of the ingredients are listed.

Volatile Organic Compounds (VOC) reported per the Emission Standards.

If no g/L value is provided this product is not subject to above standard.

16 Other information

The data included herein are presented in accordance with various environment, health and safety regulations. It is the responsibility of a recipient of the data to remain currently informed on chemical hazard information, to design and update its own program and to comply with all national, federal, state and local laws and regulations applicable to safety, occupational health, right-to-know and environmental protection.

(Cont. on page 8)

USGHS

Safety Data Sheet

Printing date 06/15/2023

Version Number 1.0

Reviewed on 06/15/2023

Trade name: *PREPRUFE® SCS Hydrophilic Grout Part A*

(Cont. from page 7)

Department issuing SDS:

GCP Applied Technologies

2325 Lakeview Pkwy

Alpharetta GA, 30009 USA

USA: +1-617-876-1400 (24 hours)

+1-800-354-5414

Contact:**The first date of preparation** 05/24/2023**Number of revision times and the latest revision date** 1.0 / 06/15/2023

USGHS

1 Identification

Product identifier

Trade name: ***PREPRUFE® SCS Hydrophilic Grout Part B***

SDS ID Number: 46305

Relevant identified uses of the substance or mixture, and uses advised against:
Specialty construction product. Not intended for other uses.

Details of the supplier of the safety data sheet

Manufacturer/Supplier:

GCP Applied Technologies
62 Whittemore Avenue
Cambridge, MA 02140 USA

GCP Canada, Inc.
294 Clements Road W.
Ajax, Ontario L1S 3C6 Canada

Information department:

Environmental Health & Safety
USA: +1-617-876-1400 (24 hours)
+1-800-354-5414 (8AM - 5PM) Not functional within Massachusetts
CAN: 1-905-683-8561 (24 hours)
Email address: msds.gcp@gcpat.com

Transport Emergency: Chemtrec +1-800-424-9300 (24 hours)

2 Hazard(s) identification

Classification of the substance or mixture

The product is not classified, according to the Globally Harmonized System (GHS).

Label elements:

Hazard pictograms Not applicable.

Not applicable.

Hazard statements Not applicable.

Hazard description:

NFPA ratings (scale 0 - 4)



Health = 1
Fire = 1
Reactivity = 0

HMIS-ratings (scale 0 - 4)



Health = 1
Flammability = 1
Reactivity = 0

Other hazards

Results of PBT and vPvB assessment

PBT: Not applicable.

Safety Data Sheet

Printing date 05/13/2021

Version Number 1.0

Reviewed on 05/13/2021

Trade name: *PREPRUFE® SCS Hydrophilic Grout Part B***vPvB:** Not applicable.

(Cont. from page 1)

3 Composition/information on ingredients**Chemical characterization:** Mixture**Hazardous components:** Not applicable.**Additional information:** Non-hazardous ingredients may be listed in Section 15; Right-To-Know disclosure.**4 First-aid measures****Description of first aid measures****General information:** Get medical advice/attention if you feel unwell.**After inhalation:** No special measures required.**After skin contact:**

Immediately wash contaminated skin with soap or mild detergent and water. If this chemical soaks clothing, immediately remove clothing and wash skin.

After eye contact: Rinse cautiously with water for several minutes.**After swallowing:**

Rinse mouth.

Do NOT induce vomiting.

Information for doctor:**Most important symptoms and effects, both acute and delayed** No further relevant information available.**Indication of any immediate medical attention and special treatment needed** No further relevant information available.**5 Fire-fighting measures****Extinguishing media****Suitable extinguishing agents:** CO₂, extinguishing powder or water spray. Fight larger fires with water spray.**Special hazards arising from the substance or mixture**

Combustion products may include toxic gases such as carbon monoxide and smoke.

Advice for firefighters**Protective equipment:** Wear personal protective equipment.**Additional information** Collect contaminated fire fighting water separately. It must not enter the sewage system.**6 Accidental release measures****Personal precautions, protective equipment and emergency procedures**

Wear protective equipment. Keep unprotected persons away.

Methods and material for containment and cleaning up:

Dispose of the collected material according to regulations.

Reference to other sections

See Section 7 for information on safe handling.

See Section 8 for information on personal protection equipment.

(Cont. on page 3)

USGHS

Safety Data Sheet

Printing date 05/13/2021

Version Number 1.0

Reviewed on 05/13/2021

Trade name: PREPRUFE® SCS Hydrophilic Grout Part B

(Cont. from page 2)

See Section 13 for disposal information.

7 Handling and storage**Handling:****Precautions for safe handling** No special precautions are necessary if used correctly.**Information about protection against explosions and fires:** No special measures required.**Conditions for safe storage, including any incompatibilities****Storage:****Information about storage in one common storage facility:** No special measures required.**Further information about storage conditions:** Keep receptacle tightly sealed.**Specific end use(s)** No further relevant information available.**8 Exposure controls/personal protection****Additional information about design of technical systems:** No further data; see item 7.**Control parameters****Components with limit values that require monitoring at the workplace:**

The product does not contain any relevant quantities of materials with critical values that have to be monitored at the workplace.

Additional information:

The lists that were valid during the creation were used as basis.

Canadian employers must consult the exposure limits in their province.

Exposure controls**Personal protective equipment:****General protective and hygienic measures:** The usual precautionary measures for handling chemicals should be followed.**Breathing equipment:**

Control exposure to ingredients with workplace control parameters if mentioned above. If no ingredients are listed, respiratory protection is generally not required.

If exposure limits are listed and may be exceeded, use approved respiratory protective equipment and filter type appropriate for the listed ingredients. (NIOSH, CEN, etc.).

Protection of hands: Gloves should be worn to prevent skin contact and should be impermeable and resistant to the product.**Material of gloves** Rubber or other impervious gloves should be worn to prevent skin contact.**Eye protection:**

Safety glasses with side shield protection.

Body protection: Use personal protective equipment as required.USGHS
(Cont. on page 4)

Safety Data Sheet

Printing date 05/13/2021

Version Number 1.0

Reviewed on 05/13/2021

Trade name: **PREPRUFE® SCS Hydrophilic Grout Part B**

(Cont. from page 3)

9 Physical and chemical properties**Information on basic physical and chemical properties****General Information****Appearance:**

Form: Liquid
Color: According to product specification
Odor: Characteristic
Odor threshold: Not determined.

pH-value (~) at 20 °C (68 °F):

7

Change in condition

Melting point/Melting range: Undetermined.
Boiling point/Boiling range: Undetermined.
Flash point: 100 °C (212 °F)

Flammability (solid, gaseous): Not applicable.**Ignition temperature:** Undetermined.**Decomposition temperature:** Not determined.**Auto igniting:** Product is not self-igniting.**Danger of explosion:** Product does not present an explosion hazard.**Explosion limits:****Lower:** Not applicable.**Upper:** Not applicable.**Vapor pressure at 20 °C (68 °F):** 17.5 hPa (13.1 mm Hg)**Density: (~) at 20 °C (68 °F)** 1 g/cm³ (8.3 lbs/gal)**Vapor density** Not determined.**Evaporation rate** Not applicable.**Solubility in / Miscibility with****Water:** Not miscible or difficult to mix.**Partition coefficient (n-octanol/water):** Not determined.**Viscosity:****Dynamic:** Not determined.**Kinematic:** Not determined.**Molecular weight** Not determined.**Other information**

No further relevant information available.

10 Stability and reactivity**Reactivity**

Stable under normal conditions.

No further relevant information available.

Chemical stability**Thermal decomposition:** No decomposition if used according to specifications.**Possibility of hazardous reactions**

No dangerous reactions known.

No further relevant information available.

Conditions to avoid No further relevant information available.**Incompatible materials:** No further relevant information available.**Hazardous decomposition products:** Carbon monoxide and carbon dioxide

USGHS

(Cont. on page 5)

Safety Data Sheet

Printing date 05/13/2021

Version Number 1.0

Reviewed on 05/13/2021

Trade name: **PREPRUFE® SCS Hydrophilic Grout Part B**

(Cont. from page 4)

11 Toxicological information**Information on toxicological effects****Acute toxicity:****Primary irritant effect:****on the skin:** No irritating effect expected**on the eye:** No irritating effect expected**inhalation:** No irritating effect expected**Additional toxicological information:****Carcinogenic categories****IARC (International Agency for Research on Cancer) Human Carcinogenicity:**
Group 1- Positive, Group 2A- Probable, Group 2B- Possible, Group 3- Not Classifiable

None of the ingredients are listed.

NTP (National Toxicology Program)**K–Known to be carcinogenic, R–May reasonably be anticipated to be carcinogenic**

None of the ingredients are listed.

OSHA-Ca (Occupational Safety & Health Administration)

None of the ingredients are listed.

12 Ecological information**Toxicity****Aquatic toxicity:** No further relevant information available.**Persistence and degradability** No further relevant information available.**Behavior in environmental systems:****Bioaccumulative potential** No further relevant information available.**Mobility in soil** No further relevant information available.**Additional ecological information:****General notes:** Not known to be hazardous to water.**Results of PBT and vPvB assessment****PBT:** Not applicable.**vPvB:** Not applicable.**Other adverse effects** No further relevant information available.**13 Disposal considerations****Disposal methods:**

Consult all regulations (federal, state, provincial, local) or a qualified waste disposal firm when characterizing product for disposal. Dispose of waste in accordance with all applicable regulations.

Recommendation:

Must not be disposed of together with household garbage. Do not allow product to reach sewage system.

(Cont. on page 6)

USGHS

Safety Data Sheet

Printing date 05/13/2021

Version Number 1.0

Reviewed on 05/13/2021

Trade name: **PREPRUFE® SCS Hydrophilic Grout Part B**

(Cont. from page 5)

Uncleaned packagings:**Recommendation:** Dispose of contents/container in accordance with local/regional/national/international regulations.

*

14 Transport information**UN-Number**

DOT, IMDG, IATA Not applicable.

UN proper shipping name

DOT, IMDG, IATA Not applicable.

Transport hazard class(es)

DOT, IMDG, IATA

Class Not applicable.

Packing group

DOT, IMDG, IATA Not applicable.

Environmental hazards: Not applicable.**Special precautions for user** Not applicable.**Transport/Additional information:**

DOT

Remarks: Not Regulated.**UN "Model Regulation":** Not applicable.

*

15 Regulatory information**Other regulations in domestic and foreign countries****SARA (Superfund Amendments and Reauthorization Act)****Section 302/304 (extremely hazardous substances):**

None of the ingredients is listed.

Section 313 Reportable Ingredients (Chemicals present below reporting threshold are exempt):

None of the ingredients is listed.

SARA Section 312/Tier I & II Hazard Categories: None**North America Chemical Inventory Status****TSCA (Toxic Substances Control Act - United States):**

All ingredients are listed or exempt from listing unless otherwise noted below.

CEPA (Canadian DSL):

All ingredients are listed or exempt from listing unless otherwise noted below.

Right to Know Ingredient Disclosure:

7732-18-5 Water

Proprietary Polymer - NJTSN801416167

California Proposition 65: (Substances <0.1% unless noted in Section 3)**Chemicals known to cause cancer:**

None of the ingredients is listed.

Chemicals known to cause reproductive toxicity for females:

None of the ingredients are listed.

Chemicals known to cause reproductive toxicity for males:

None of the ingredients are listed.

(Cont. on page 7)

USGHS

Safety Data Sheet

Printing date 05/13/2021

Version Number 1.0

Reviewed on 05/13/2021

Trade name: **PREPRUFE® SCS Hydrophilic Grout Part B**

(Cont. from page 6)

Chemicals known to cause developmental toxicity:

None of the ingredients are listed.

Carcinogenicity Categories**TLV-ACGIH (THE American Conference of Governmental Industrial Hygienists)****Human Carcinogen - A1 Confirmed, A2 Suspected, A3 Unknown Relevance, A4 Not Classifiable**

None of the ingredients are listed.

NIOSH-Cancer (National Institute for Occupational Safety and Health)

None of the ingredients are listed.

Volatile Organic Compounds (VOC) reported per the Emission Standards.

If no g/L value is provided this product is not subject to above standard.

16 Other information

The data included herein are presented in accordance with various environment, health and safety regulations. It is the responsibility of a recipient of the data to remain currently informed on chemical hazard information, to design and update its own program and to comply with all national, federal, state and local laws and regulations applicable to safety, occupational health, right-to-know and environmental protection.

Department issuing SDS:

GCP Applied Technologies
62 Whittemore Avenue
Cambridge, MA 02140 USA
USA: +1-617-876-1400 (24 hours)
+1-800-354-5414

Contact:

The first date of preparation 05/13/2021

Number of revision times and the latest revision date 1.0 / 05/13/2021

USGHS

1 Identification

Product identifier

Trade name: ***PREPRUFE® SCS Hydrophilic Grout Part A Activator***

SDS ID Number: 46306

Relevant identified uses of the substance or mixture, and uses advised against:
Specialty construction product. Not intended for other uses.

Details of the supplier of the safety data sheet

Manufacturer/Supplier:

GCP Applied Technologies
62 Whittemore Avenue
Cambridge, MA 02140 USA

GCP Canada, Inc.
294 Clements Road W.
Ajax, Ontario L1S 3C6 Canada

Information department:

Environmental Health & Safety
USA: +1-617-876-1400 (24 hours)
+1-800-354-5414 (8AM - 5PM) Not functional within Massachusetts
CAN: 1-905-683-8561 (24 hours)
Email address: msds.gcp@gcpat.com

Transport Emergency: Chemtrec +1-800-424-9300 (24 hours)

2 Hazard(s) identification

Classification of the substance or mixture

The product is not classified, according to the Globally Harmonized System (GHS).

Label elements:

Hazard pictograms Not applicable.

Not applicable.

Hazard statements Not applicable.

Hazard description:

NFPA ratings (scale 0 - 4)



Health = 1
Fire = 1
Reactivity = 0

HMIS-ratings (scale 0 - 4)



Health = 1
Flammability = 1
Reactivity = 0

Other hazards

Results of PBT and vPvB assessment

PBT: Not applicable.

Safety Data Sheet

Printing date 05/13/2021

Version Number 1.0

Reviewed on 05/13/2021

Trade name: **PREPRUFE® SCS Hydrophilic Grout Part A Activator**

vPvB: Not applicable.

(Cont. from page 1)

3 Composition/information on ingredients**Chemical characterization: Mixture****Hazardous components:**

102-71-6 | Triethanolamine

70-<80%

Additional information: Non-hazardous ingredients may be listed in Section 15; Right-To-Know disclosure.**4 First-aid measures****Description of first aid measures****General information:** Get medical advice/attention if you feel unwell.**After inhalation:** No special measures required.**After skin contact:**

Immediately wash contaminated skin with soap or mild detergent and water. If this chemical soaks clothing, immediately remove clothing and wash skin.

After eye contact: Rinse cautiously with water for several minutes.**After swallowing:**

Rinse mouth.

Do NOT induce vomiting.

Information for doctor:**Most important symptoms and effects, both acute and delayed** No further relevant information available.**Indication of any immediate medical attention and special treatment needed** No further relevant information available.**5 Fire-fighting measures****Extinguishing media****Suitable extinguishing agents:** CO₂, extinguishing powder or water spray. Fight larger fires with water spray.**Special hazards arising from the substance or mixture**

Combustion products may include toxic gases such as carbon monoxide and smoke.

Advice for firefighters**Protective equipment:** Wear personal protective equipment.**Additional information** Collect contaminated fire fighting water separately. It must not enter the sewage system.**6 Accidental release measures****Personal precautions, protective equipment and emergency procedures**

Wear protective equipment. Keep unprotected persons away.

Methods and material for containment and cleaning up:

Dispose of the collected material according to regulations.

Reference to other sections

See Section 7 for information on safe handling.

(Cont. on page 3)

USGHS

Safety Data Sheet

Printing date 05/13/2021

Version Number 1.0

Reviewed on 05/13/2021

Trade name: **PREPRUFE® SCS Hydrophilic Grout Part A Activator**

(Cont. from page 2)

See Section 8 for information on personal protection equipment.

See Section 13 for disposal information.

7 Handling and storage**Handling:****Precautions for safe handling** No special precautions are necessary if used correctly.**Information about protection against explosions and fires:** No special measures required.**Conditions for safe storage, including any incompatibilities****Storage:****Information about storage in one common storage facility:** No special measures required.**Further information about storage conditions:** Keep receptacle tightly sealed.**Specific end use(s)** No further relevant information available.**8 Exposure controls/personal protection****Additional information about design of technical systems:** No further data; see item 7.**Control parameters****Components with limit values that require monitoring at the workplace:****102-71-6 Triethanolamine**

EL (Canada)	Long-term value: 5 mg/m ³
EV (Canada)	Long-term value: 3.1 mg/m ³ , 0.5 ppm
TLV (USA)	Long-term value: 5 mg/m ³

Additional information:

The lists that were valid during the creation were used as basis.
 Canadian employers must consult the exposure limits in their province.

Exposure controls**Personal protective equipment:****General protective and hygienic measures:** The usual precautionary measures for handling chemicals should be followed.**Breathing equipment:**

Control exposure to ingredients with workplace control parameters if mentioned above. If no ingredients are listed, respiratory protection is generally not required.

If exposure limits are listed and may be exceeded, use approved respiratory protective equipment and filter type appropriate for the listed ingredients. (NIOSH, CEN, etc.).

Protection of hands: Gloves should be worn to prevent skin contact and should be impermeable and resistant to the product.**Material of gloves** Rubber or other impervious gloves should be worn to prevent skin contact.**Eye protection:**

Safety glasses with side shield protection.

Body protection: Use personal protective equipment as required.

Safety Data Sheet

Printing date 05/13/2021

Version Number 1.0

Reviewed on 05/13/2021

Trade name: **PREPRUFE® SCS Hydrophilic Grout Part A Activator**

(Cont. from page 3)

9 Physical and chemical properties**Information on basic physical and chemical properties****General Information****Appearance:**

Form: Liquid
Color: According to product specification
Odor: Characteristic
Odor threshold: Not determined.

pH-value (~): Not determined.

Change in condition

Melting point/Melting range: Undetermined.
Boiling point/Boiling range: 310 °C (590 °F)
Flash point: 176 °C (348.8 °F)

Flammability (solid, gaseous): Not applicable.

Ignition temperature: 305 °C (581 °F)

Decomposition temperature: Not determined.
Auto igniting: Product is not self-igniting.
Danger of explosion: Product does not present an explosion hazard.

Explosion limits:
Lower: 2.1 Vol %
Not applicable.
Upper: 10.6 Vol %
Not applicable.

Vapor pressure: Not determined.
Density: (~) at 20 °C (68 °F) 1.1 g/cm³ (9.2 lbs/gal)
Vapor density Not determined.
Evaporation rate Not applicable.

Solubility in / Miscibility with Water: Not miscible or difficult to mix.

Partition coefficient (n-octanol/water): Not determined.

Viscosity:
Dynamic: Not determined.
Kinematic: Not determined.
Molecular weight Not determined.

Other information No further relevant information available.

10 Stability and reactivity**Reactivity**

Stable under normal conditions.
No further relevant information available.

Chemical stability

Thermal decomposition: No decomposition if used according to specifications.

Possibility of hazardous reactions

No dangerous reactions known.
No further relevant information available.

Conditions to avoid No further relevant information available.

Incompatible materials: No further relevant information available.

(Cont. on page 5)

USGHS

Safety Data Sheet

Printing date 05/13/2021

Version Number 1.0

Reviewed on 05/13/2021

Trade name: **PREPRUFE® SCS Hydrophilic Grout Part A Activator**

(Cont. from page 4)

Hazardous decomposition products: Carbon monoxide and carbon dioxide**11 Toxicological information****Information on toxicological effects****Acute toxicity:****LD/LC50 values relevant for classification:****102-71-6 Triethanolamine**

Oral	LD50	5,300 mg/kg (guinea pig) 6,400 mg/kg (rat - male)
Dermal	LD50	>10,000 mg/kg (rabbit)
	LC50, 96h	11,800 mg/l (fish)

Primary irritant effect:**on the skin:** No irritating effect expected**on the eye:** No irritating effect expected**inhalation:** No irritating effect expected**Additional toxicological information:****102-71-6 Triethanolamine**

NOEC/NOEL 16 mg/l (crustaceans) (Chronic NOEC)

Carcinogenic categories**IARC (International Agency for Research on Cancer) Human Carcinogenicity:****Group 1- Positive, Group 2A- Probable, Group 2B- Possible, Group 3- Not Classifiable**

102-71-6	Triethanolamine	3
111-42-2	Diethanolamine	2B

NTP (National Toxicology Program)**K–Known to be carcinogenic, R–May reasonably be anticipated to be carcinogenic**

None of the ingredients are listed.

OSHA-Ca (Occupational Safety & Health Administration)

None of the ingredients are listed.

12 Ecological information**Toxicity****Aquatic toxicity:****102-71-6 Triethanolamine**

EC50, 72h	512 mg/l (algae)
EC50, 48h	609.88 mg/l (daphnia magna)

Persistence and degradability No further relevant information available.**Behavior in environmental systems:****Bioaccumulative potential** No further relevant information available.**Mobility in soil** No further relevant information available.**Additional ecological information:****General notes:** Not known to be hazardous to water.**Results of PBT and vPvB assessment****PBT:** Not applicable.

(Cont. on page 6)

USGHS

Safety Data Sheet

Printing date 05/13/2021

Version Number 1.0

Reviewed on 05/13/2021

Trade name: **PREPRUFE® SCS Hydrophilic Grout Part A Activator**

(Cont. from page 5)

vPvB: Not applicable.

Other adverse effects No further relevant information available.**13 Disposal considerations****Disposal methods:**

Consult all regulations (federal, state, provincial, local) or a qualified waste disposal firm when characterizing product for disposal. Dispose of waste in accordance with all applicable regulations.

Recommendation:

Must not be disposed of together with household garbage. Do not allow product to reach sewage system.

Uncleaned packagings:**Recommendation:** Dispose of contents/container in accordance with local/regional/national/international regulations.**14 Transport information****UN-Number****Remarks:****Not DOT regulated in drums/totes**

DOT

UN3082

IMDG, IATA

Not applicable.

UN proper shipping name**Remarks:****Not DOR regulated in drums/totes**

DOT

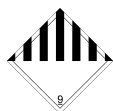
Environmentally hazardous substance, liquid, n.o.s. (Diethanolamine)

IMDG, IATA

Not applicable.

Transport hazard class(es)

DOT



Class

9 Miscellaneous

Label

9

Remarks:

Bulk shipments above 2163 gallons exceeding the reportable quantity for Diethanolamine (RQ=100 pounds) are regulated as HazMats.

IMDG, IATA

Class

Not applicable.

Packing group

DOT

III

IMDG, IATA

Not applicable.

Environmental hazards:

No additional hazards.

Special precautions for user Not applicable.

(Cont. on page 7)

USGHS

Safety Data Sheet

Printing date 05/13/2021

Version Number 1.0

Reviewed on 05/13/2021

Trade name: **PREPRUFE® SCS Hydrophilic Grout Part A Activator**

(Cont. from page 6)

Transport/Additional information:

DOT

Remarks: Not Regulated.

15 Regulatory information**Other regulations in domestic and foreign countries****SARA (Superfund Amendments and Reauthorization Act)****Section 302/304 (extremely hazardous substances):**

None of the ingredients is listed.

Section 313 Reportable Ingredients (Chemicals present below reporting threshold are exempt):

None of the ingredients is listed.

SARA Section 312/Tier I & II Hazard Categories: None**North America Chemical Inventory Status****TSCA (Toxic Substances Control Act - United States):**

All ingredients are listed or exempt from listing unless otherwise noted below.

CEPA (Canadian DSL):

All ingredients are listed or exempt from listing unless otherwise noted below.

Right to Know Ingredient Disclosure:

7732-18-5 | Water

California Proposition 65: (Substances <0.1% unless noted in Section 3)**Chemicals known to cause cancer:**

None of the ingredients is listed.

Chemicals known to cause reproductive toxicity for females:

None of the ingredients are listed.

Chemicals known to cause reproductive toxicity for males:

None of the ingredients are listed.

Chemicals known to cause developmental toxicity:

None of the ingredients are listed.

Carcinogenicity Categories**TLV-ACGIH (THE American Conference of Governmental Industrial Hygienists)****Human Carcinogen - A1 Confirmed, A2 Suspected, A3 Unknown Relevance, A4 Not Classifiable**

Triethanolamine

A3

NIOSH-Cancer (National Institute for Occupational Safety and Health)

None of the ingredients are listed.

Volatile Organic Compounds (VOC) reported per the Emission Standards.

If no g/L value is provided this product is not subject to above standard.

16 Other information

The data included herein are presented in accordance with various environment, health and safety regulations. It is the responsibility of a recipient of the data to remain currently informed on chemical hazard information, to design and update its own program and to comply with all national, federal, state and local laws and regulations applicable to safety, occupational health, right-to-know and environmental protection.

Department issuing SDS:

GCP Applied Technologies

62 Whittemore Avenue

Cambridge, MA 02140 USA

USA: +1-617-876-1400 (24 hours)

+1-800-354-5414

(Cont. on page 8)

USGHS

Safety Data Sheet

Printing date 05/13/2021

Version Number 1.0

Reviewed on 05/13/2021

Trade name: *PREPRUFE® SCS Hydrophilic Grout Part A Activator*

(Cont. from page 7)

Contact:**The first date of preparation** 05/13/2021**Number of revision times and the latest revision date** 1.0 / 05/13/2021

USGHS

1 Identification

Product identifier

Trade name: *Preprufe SCS Hydrophilic Grout Part B Activator*

SDS ID Number: 46307

Relevant identified uses of the substance or mixture, and uses advised against
Specialty construction product. Not intended for other uses

Details of the supplier of the safety data sheet

Manufacturer/Supplier:

GCP Applied Technologies
62 Whittemore Avenue
Cambridge, MA 02140 USA

GCP Canada, Inc.
294 Clements Road W.
Ajax, Ontario L1S 3C6 Canada

Information department:

Environmental Health & Safety
USA: +1-617-876-1400 (24 hours)
+1-800-354-5414 (8AM - 5PM) Not functional within Massachusetts
CAN: 1-905-683-8561 (24 hours)
Email address: msds.gcp@gcpat.com

Transport Emergency: Chemtrec +1-800-424-9300 (24 hours)

2 Hazard(s) identification

Classification of the substance or mixture

May intensify fire; oxidizer.

Toxic if swallowed.

May cause allergy or asthma symptoms or breathing difficulties if inhaled.

May cause an allergic skin reaction.

Label elements:

Hazard pictograms



GHS03 GHS06 GHS08

Danger

Hazard statements

May intensify fire; oxidizer.

Toxic if swallowed.

May cause allergy or asthma symptoms or breathing difficulties if inhaled.

May cause an allergic skin reaction.

Precautionary statements

Take any precaution to avoid mixing with combustibles.

Avoid breathing dust/fume/gas/mist/vapors/spray

Wear protective gloves/protective clothing/eye protection/face protection.

Safety Data Sheet

Printing date 03/29/2017

Version Number 1.0

Reviewed on 03/29/2017

Trade name: *Preprufe SCS Hydrophilic Grout Part B Activator*

(Cont. from page 1)

Keep away from heat.
 [In case of inadequate ventilation] wear respiratory protection.
 Keep/Store away from clothing/combustible materials.
 IF SWALLOWED: Immediately call a POISON CENTER/ doctor.
 IF ON SKIN: Wash with plenty of water.
NFPA ratings (scale 0 - 4)



Health = 1
 Fire = 3
 Reactivity = 0

The substance possesses oxidizing properties.

HMIS-ratings (scale 0 - 4)

HEALTH	1
FIRE	3
REACTIVITY	0

Health = *1
 Flammability = 3
 Reactivity = 0

Other hazards

Results of PBT and vPvB assessment

PBT: Not applicable.
vPvB: Not applicable.

3 Composition/information on ingredients

Chemical characterization: Mixture

Description: Mixture of the hazardous substance(s) listed below with additional nonhazardous ingredients.

Hazardous components:

7775-27-1	disodium peroxodisulphate	50-100%
-----------	---------------------------	---------

Additional information: Non-hazardous ingredients may be listed in Section 15; Right-To-Know disclosure.

4 First-aid measures

Description of first aid measures

General information: Get medical advice/attention if you feel unwell.

After inhalation:

Supply fresh air. If required, provide artificial respiration. Keep patient warm. Consult doctor if symptoms persist.

After skin contact:

Immediately wash contaminated skin with soap or mild detergent and water. If this chemical soaks clothing, immediately remove clothing and wash skin.

After eye contact:

Rinse opened eye for several minutes under running water.

Rinse cautiously with water for several minutes.

After swallowing:

Do NOT induce vomiting.

Immediately call a doctor.

Never give anything by mouth to an unconscious person.

Information for doctor:

Most important symptoms and effects, both acute and delayed Harmful if swallowed.

(Cont. on page 3)

USGHS

Safety Data Sheet

Printing date 03/29/2017

Version Number 1.0

Reviewed on 03/29/2017

Trade name: *Preprufe SCS Hydrophilic Grout Part B Activator*

(Cont. from page 2)

Indication of any immediate medical attention and special treatment needed No further relevant information available.

* 5 Fire-fighting measures

Special hazards arising from the substance or mixture No further relevant information available.**Additional information** Collect contaminated fire fighting water separately. It must not enter the sewage system.

6 Accidental release measures

Personal precautions, protective equipment and emergency procedures

Wear protective equipment. Keep unprotected persons away.

Methods and material for containment and cleaning up:

Contain and/or absorb spill with inert material (i.e. sand, vermiculite) then place in a suitable container.

Sweep up spilled product into receptacles.

Dispose contaminated material as waste according to section 13 of the SDS.

Reference to other sections

See Section 7 for information on safe handling.

See Section 8 for information on personal protection equipment.

See Section 13 for disposal information.

* 7 Handling and storage

Handling:**Precautions for safe handling**

Open and handle receptacle with care.

Do not breathe dust.

Prevent formation of dust.

Information about protection against explosions and fires: No special measures required.**Conditions for safe storage, including any incompatibilities****Storage:****Information about storage in one common storage facility:** No special measures required.**Further information about storage conditions:** Keep receptacle tightly sealed.**Specific end use(s)** No further relevant information available.

* 8 Exposure controls/personal protection

Additional information about design of technical systems: No further data; see item 7.**Control parameters****Components with limit values that require monitoring at the workplace:****7775-27-1 disodium peroxodisulphate**

TLV (USA)	Long-term value: 0.1 mg/m ³ as Persulfates
-----------	--

Additional information: The lists that were valid during the creation were used as basis.

(Cont. on page 4)

USGHS

Safety Data Sheet

Printing date 03/29/2017

Version Number 1.0

Reviewed on 03/29/2017

Trade name: *Preprufe SCS Hydrophilic Grout Part B Activator*

(Cont. from page 3)

Exposure controls**Personal protective equipment:****General protective and hygienic measures:**

Avoid contact with the eyes and skin.

The usual precautionary measures for handling chemicals should be followed.

Breathing equipment:

Control exposure to ingredients with workplace control parameters if mentioned above. If no ingredients are listed, respiratory protection is generally not required.

If exposure limits are listed and may be exceeded, use approved respiratory protective equipment and filter type appropriate for the listed ingredients. (NIOSH, CEN, etc.).

Protection of hands: Gloves should be worn to prevent skin contact and should be impermeable and resistant to the product.**Material of gloves** Gloves should be worn to prevent skin contact and should be impermeable and resistant to the product.**Eye protection:**

Safety glasses with side shield protection.

Safety glasses with side shields should be worn to prevent contact due to splashing. Under high vapor mist concentrations, tightly sealed goggles should be worn.



A face shield should also be worn if there is potential exposure to splash or spray.

Body protection:

Protective work clothing

Use personal protective equipment as required.

Take off contaminated clothing.

9 Physical and chemical properties**Information on basic physical and chemical properties****General Information****Appearance:**

Form:	Powder
Color:	Colorless
Odor:	Pungent
Odor threshold:	Not determined.

pH-value (~) at 20 °C (68 °F):

6

Change in condition

Melting point/Melting range:	Undetermined.
Boiling point/Boiling range:	Undetermined.
Flash point:	Not determined

Flammability (solid, gaseous): Contact with combustible material may cause fire.

Decomposition temperature:	Not determined.
Auto igniting:	Product is not self-igniting.
Danger of explosion:	Not determined.

(Cont. on page 5)

USGHS

Safety Data Sheet

Printing date 03/29/2017

Version Number 1.0

Reviewed on 03/29/2017

Trade name: *Preprufe SCS Hydrophilic Grout Part B Activator*

(Cont. from page 4)

Explosion limits:**Lower:** Not determined.**Upper:** Not determined.**VOC Content (max):** Not determined.**Vapor pressure:**

Not applicable.

Density: (~) at 20 °C (68 °F)2.6 g/cm³ (21.697 lbs/gal)**Relative density**

Not determined.

Vapor density

Not applicable.

Evaporation rate

Not applicable.

Solubility in / Miscibility with**Water:** Not miscible or difficult to mix.**Partition coefficient (n-octanol/water):** Not determined.**Viscosity:****Dynamic:** Not applicable.**Kinematic:** Not applicable.**Molecular weight**

238.09 g/mol

Not applicable.

Other information

No further relevant information available.

*

10 Stability and reactivity**Reactivity** Stable under normal conditions.**Chemical stability****Thermal decomposition:** No decomposition if used according to specifications.**Possibility of hazardous reactions** No further relevant information available.**Conditions to avoid** No further relevant information available.**Incompatible materials:** No further relevant information available.**Hazardous decomposition products:** Carbon monoxide and carbon dioxide**Additional information:** See section 7 for information on handling, storage and conditions to be avoided.

*

11 Toxicological information**Information on toxicological effects****Acute toxicity:****Primary irritant effect:****on the skin:** No irritating effect expected**on the eye:** No irritating effect expected**inhalation:** No irritating effect expected**Ingestion:** Toxic if swallowed.**Sensitization:**

May cause allergy or asthma symptoms or breathing difficulties if inhaled.

May cause an allergic skin reaction.

Additional toxicological information: Toxic

(Cont. on page 6)

USGHS

Safety Data Sheet

Printing date 03/29/2017

Version Number 1.0

Reviewed on 03/29/2017

Trade name: *Preprufe SCS Hydrophilic Grout Part B Activator*

(Cont. from page 5)

Carcinogenic categories**IARC (International Agency for Research on Cancer) Human Carcinogenicity:**
Group 1- Positive, Group 2A- Probable, Group 2B- Possible, Group 3- Not Classifiable

None of the ingredients is listed.

NTP (National Toxicology Program)**K–Known to be carcinogenic, R–May reasonably be anticipated to be carcinogenic**

None of the ingredients is listed.

OSHA-Ca (Occupational Safety & Health Administration)

None of the ingredients is listed.

12 Ecological information**Toxicity****Aquatic toxicity:** No further relevant information available.**Persistence and degradability** No further relevant information available.**Behavior in environmental systems:****Bioaccumulative potential** No further relevant information available.**Mobility in soil** No further relevant information available.**Additional ecological information:****General notes:** Do not allow undiluted product or large quantities of it to reach ground water, water course or sewage system.**Results of PBT and vPvB assessment****PBT:** Not applicable.**vPvB:** Not applicable.**Other adverse effects** No further relevant information available.**13 Disposal considerations****Disposal methods:**

Consult all regulations (federal, state, provincial, local) or a qualified waste disposal firm when characterizing product for disposal. Dispose of waste in accordance with all applicable regulations.

Recommendation:

Must not be disposed of together with household garbage. Do not allow product to reach sewage system.

Uncleaned packagings:**Recommendation:** Dispose of contents/container in accordance with local/regional/national/international regulations.**14 Transport information****UN-Number**

DOT, IMDG, IATA

UN1505

UN proper shipping name

DOT

Sodium persulfate

(Cont. on page 7)

USGHS

Safety Data Sheet

Printing date 03/29/2017

Version Number 1.0

Reviewed on 03/29/2017

Trade name: *Preprufe SCS Hydrophilic Grout Part B Activator*

(Cont. from page 6)

IMDG, IATA

SODIUM PERSULPHATE

Transport hazard class(es)

DOT

Class
Label5.1 Oxidizing substances
5.1

IMDG, IATA

Class
Label5.1 Oxidizing substances
5.1

Packing group

DOT, IMDG, IATA

III

Environmental hazards:

Marine pollutant:

No

Special precautions for user

Danger code (Kemler):

EMS Number:

Warning: Oxidizing substances

50

F-A,S-Q

Transport/Additional information: Not classified as a dangerous good for transport by road, rail or air.

IMDG

Limited quantities (LQ)

Excepted quantities (EQ)

5 kg

Code: E1

Maximum net quantity per inner packaging: 30 g

Maximum net quantity per outer packaging: 1000 g

UN "Model Regulation":

UN1505, Sodium persulfate, 5.1, III

*

15 Regulatory information

SARA (Superfund Amendments and Reauthorization Act)

Section 302/304 (extremely hazardous substances):

None of the ingredients is listed.

Section 313 Reportable Ingredients (Chemicals present below reporting threshold are exempt):

None of the ingredients is listed.

SARA Section 312/Tier I & II Hazard Categories:

Physical Hazard - Oxidizer (solid, liquid, or gas)

Health Hazard - Acute toxicity (any route of exposure)

Health Hazard - Respiratory or Skin Sensitization

North America Chemical Inventory Status

TSCA (Toxic Substances Control Act - United States):

All ingredients are listed or exempt from listing unless otherwise noted below.

CEPA (Canadian DSL):

All ingredients are listed or exempt from listing unless otherwise noted below.

(Cont. on page 8)

USGHS

Safety Data Sheet

Printing date 03/29/2017

Version Number 1.0

Reviewed on 03/29/2017

Trade name: *Preprufe SCS Hydrophilic Grout Part B Activator*

(Cont. from page 7)

California Proposition 65**Chemicals known to cause cancer:**

None of the ingredients is listed.

Chemicals known to cause reproductive toxicity for females:

None of the ingredients is listed.

Chemicals known to cause reproductive toxicity for males:

None of the ingredients is listed.

Chemicals known to cause developmental toxicity:

None of the ingredients is listed.

Carcinogenicity Categories**EPA (Environmental Protection Agency)**

None of the ingredients is listed.

TLV-ACGIH (THE American Conference of Governmental Industrial Hygienists)**Human Carcinogen - A1 Confirmed, A2 Suspected, A3 Unknown Relevance, A4 Not Classifiable**

None of the ingredients is listed.

NIOSH-Cancer (National Institute for Occupational Safety and Health)

None of the ingredients is listed.

Volatile Organic Compounds (VOC) reported per the Emission Standards.

If no g/L value is provided this product is not subject to above standard.

*

16 Other information

The data included herein are presented in accordance with various environment, health and safety regulations. It is the responsibility of a recipient of the data to remain currently informed on chemical hazard information, to design and update its own program and to comply with all national, federal, state and local laws and regulations applicable to safety, occupational health, right-to-know and environmental protection.

Department issuing SDS:

GCP Applied Technologies

62 Whittemore Avenue

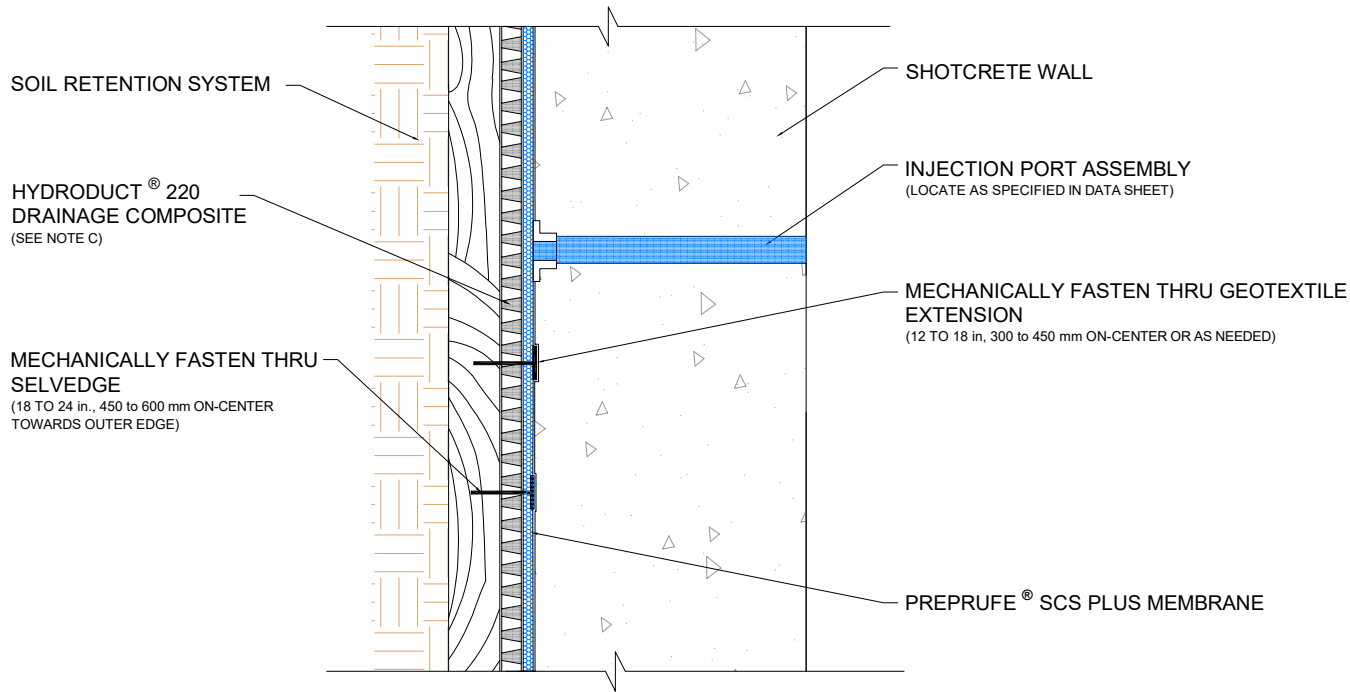
Cambridge, MA 02140 USA

USA: +1-617-876-1400 (24 hours)

+1-800-354-5414

Date of preparation / last revision 03/29/2017 / -**The first date of preparation** 01/07/2011**Number of revision times and the latest revision date** 1.0 / 03/29/2017

USGHS



- NOTES: A) DO NOT POSITION INJECTION PORT ASSEMBLY DIRECTLY OVER THE SIDE LAP
B) IF HYDRODUCT® IS USED AS PART OF THE DRAINAGE SYSTEM, 6 MIL, 1.5 mm POLY IS REQUIRED BETWEEN THE HYDRODUCT® AND THE PREPRUFE® SCS PLUS MEMBRANE



SIDE LAP

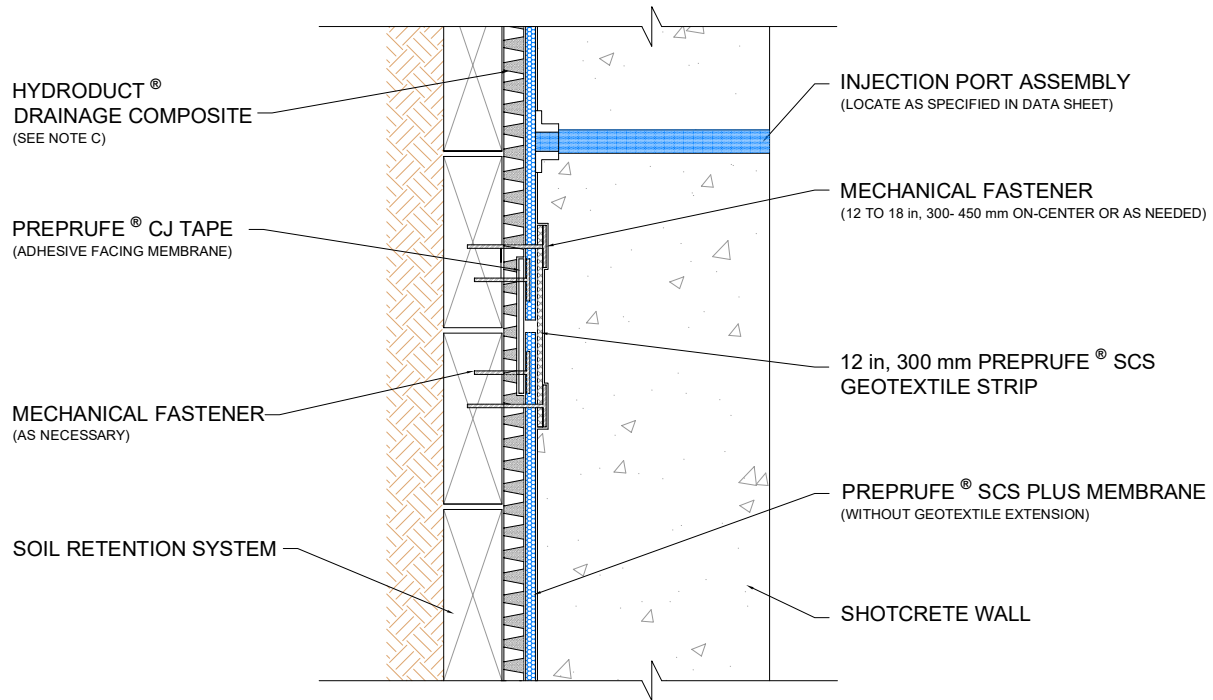
PREPRUFE® SCS PLUS WATERPROOFING SYSTEM FOR SHOTCRETE

DRAWING: SCS-001

SCALE: NOT TO SCALE

DATE: 03-01-2025

SUPERCEDES: 06-01-2024



- NOTES: A) USE SEAM ROLLER TO ENSURE PROPER SEAL TO THE INVERTED PREPRUFE® CJ TAPE
 B) DO NOT POSITION INJECTION PORT ASSEMBLY DIRECTLY OVER THE END LAP
 C) IF HYDRODUCT® IS USED AS PART OF THE DRAINAGE SYSTEM, 6 MIL, 1.5 mm POLY IS REQUIRED BETWEEN THE HYDRODUCT® AND THE PREPRUFE® SCS PLUS MEMBRANE



END LAP

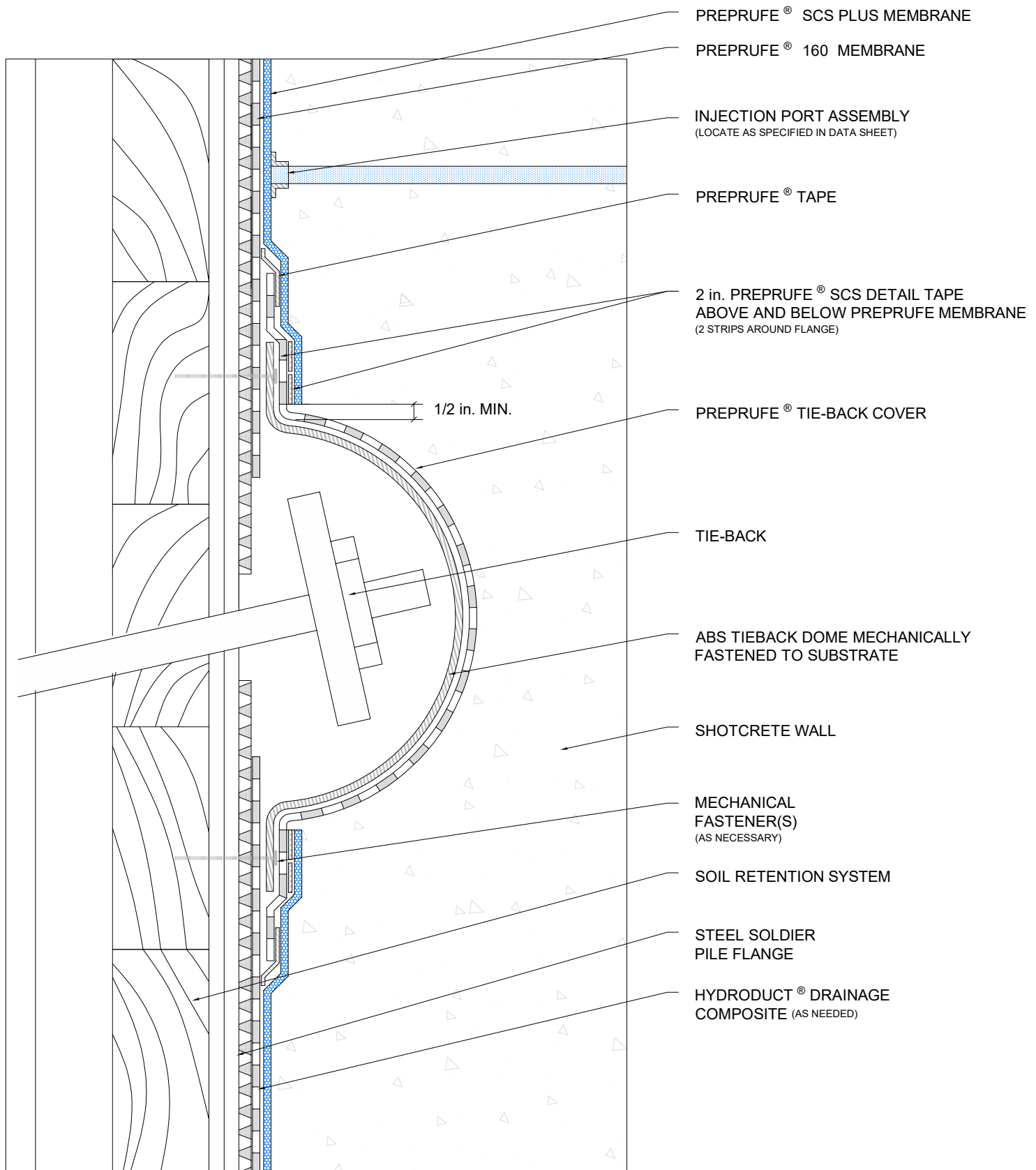
PREPRUFE® SCS PLUS WATERPROOFING SYSTEM FOR SHOTCRETE

DRAWING: SCS-002

SCALE: NOT TO SCALE

DATE: 03-01-2025

SUPERCEDES: 06-01-2024



TIE-BACK COVER

PREPRUFE[®] SCS PLUS WATERPROOFING SYSTEM FOR SHOTCRETE

DRAWING: SCS-003

SCALE: NOT TO SCALE

EFFECTIVE DATE: 03-01-2025

SUPERSEDES: 09-19-2022

PREPRUFE[®] MEMBRANE PATCH
(EXTENDING 12" FROM O.D. OF PENETRATION)

HYDRODUCT[®] DRAINAGE COMPOSITE
(SEE NOTE B)

PREPRUFE[®] DETAIL TAPE
(2 COURSES MIN 1" SPACING)

INJECTION PORT ASSEMBLY
(LOCATE AS SPECIFIED IN DATA SHEET)

$\frac{1}{2}$ in.
(15 mm) (TYP)

ADCOR[®] WATERSTOP
(SEE NOTE C)

PENETRATION

- SECURELY FIXED TO SUBSTRATE
- FREE OF CONNECTORS, COUPLINGS, ETC., FOR A MIN. OF 6 in, 150 mm FROM THE MEMBRANE

MECHANICAL FASTENER(S)
(AS NECESSARY- TAPE OVER ALL NAIL HEADS WITH 4"x4" PP TAPE OR PREPRUFE LIQUID FLASHING)

SOIL RETENTION SYSTEM

DENEFF SWELLSEAL[®] WA HYDROPHILIC SEALANT
(FILL MEMBRANE AFTER TRIMMING GEOTEXTILE FABRIC - SEE NOTE A - STEP 1)

PREPRUFE[®] SCS PLUS MEMBRANE

SHOTCRETE WALL

- NOTE: A) APPLY PREPRUFE[®] HYDROPHILIC SEALANT IN TWO SEPARATE APPLICATIONS
STEP 1 - SEAL EDGE OF TRIMMED MEMBRANE TO PENETRATION AS SHOWN ABOVE
STEP 2 - APPLY 1 in, 25 mm FILLET EXTENDING OVER PREPRUFE[®] SCS PLUS MEMBRANE AS SHOWN ABOVE
B) IF HYDRODUCT[®] IS USED AS PART OF THE DRAINAGE SYSTEM, 6 MIL 1.5 mm POLY IS REQUIRED BETWEEN HYDRODUCT[®] AND PREPRUFE[®] SCS PLUS MEMBRANE
C) GCP MAY REQUIRE AN ALTERNATE GCP WATERSTOP BASED ON DESIGN CONDITIONS



PENETRATION (OPTION - 1)
PREPRUFE[®] SCS PLUS WATERPROOFING SYSTEM FOR SHOTCRETE

DRAWING: SCS-004 A

SCALE: NOT TO SCALE

DATE: 03-01-2025

SUPERCEDES: 06-01-2024

PREPRUFE® MEMBRANE PATCH

(EXTENDING 12" FROM O.D. OF PENETRATION)

HYDRODUCT® DRAINAGE COMPOSITE

(SEE NOTE B)

PREPRUFE® DETAIL TAPE

(2 COURSES MIN 1" SPACING)

PENETRATION

- SECURELY FIXED TO SUBSTRATE
- FREE OF CONNECTORS, COUPLINGS, ETC., FOR A MIN. OF 6 in, 150 mm FROM THE MEMBRANE

MECHANICAL FASTENER(S)

(AS NECESSARY- TAPE OVER ALL NAIL HEADS WITH 4"x4" PP TAPE OR PREPRUFE LIQUID FLASHING)

SOIL RETENTION SYSTEM

INJECTION PORT ASSEMBLY

(LOCATE AS SPECIFIED IN DATA SHEET)

PREPRUFE® COLLAR PATCH

(SEE PRE-034)

PREPRUFE® TAPE

(SEE PRE-034)

ADCOR® WATERSTOP

(SEE NOTE C)

½ in,
(15 mm) (TYP)

DENEFF SWELLSEAL®

WA HYDROPHILIC SEALANT

(REPLACING LIQUID MEMBRANE CANT IN PRE-034)

PREPRUFE® SCS PLUS MEMBRANE

SHOTCRETE WALL

- NOTE:
- A) IF HYDRODUCT® IS USED AS PART OF THE DRAINAGE SYSTEM, 6 MIL 1.5 mm POLY IS REQUIRED BETWEEN HYDRODUCT® AND PREPRUFE® SCS PLUS MEMBRANE
 - B) GCP MAY REQUIRE AN ALTERNATE GCP WATERSTOP BASED ON DESIGN CONDITIONS
 - C) REFER TO PRE-034 FOR PREPRUFE® PIPE PENETRATION



PENETRATION (OPTION - 2)

PREPRUFE® SCS PLUS WATERPROOFING SYSTEM FOR SHOTCRETE

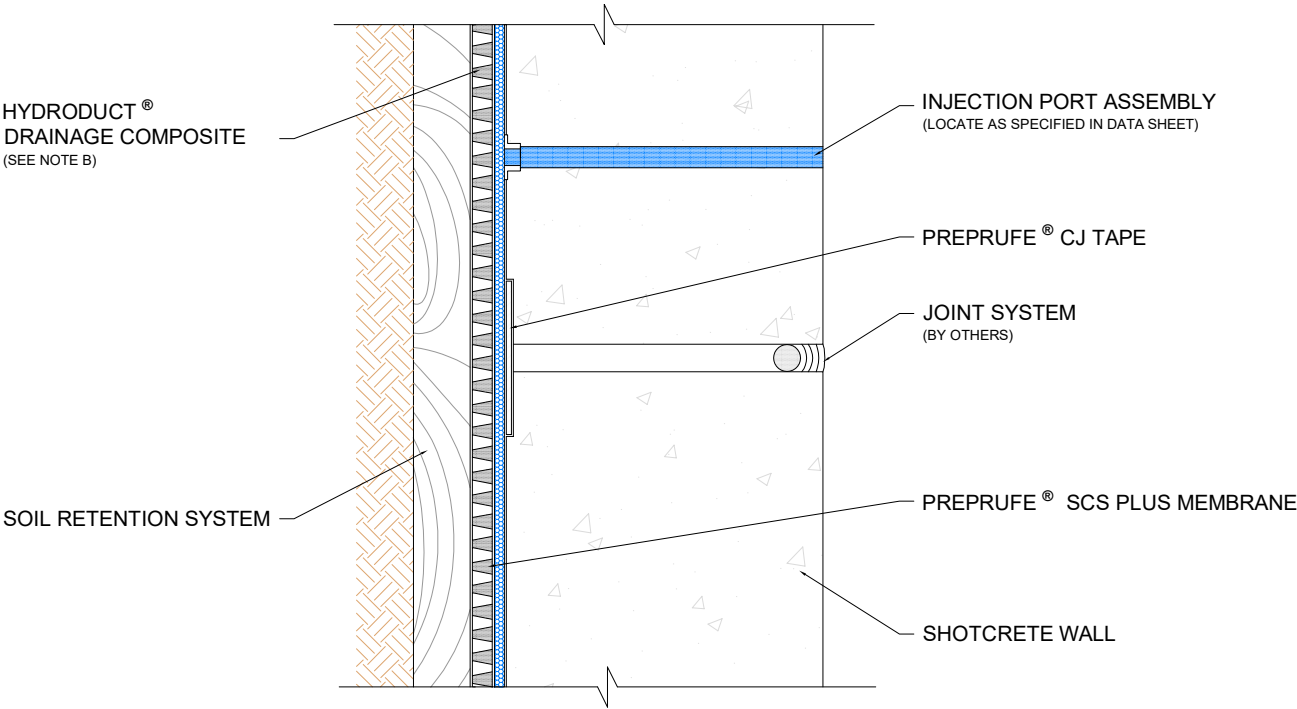
DRAWING: SCS-004 B

SCALE: NOT TO SCALE

DATE: 03-01-2025

SUPERCEDES: 06-01-2024

PLAN VIEW

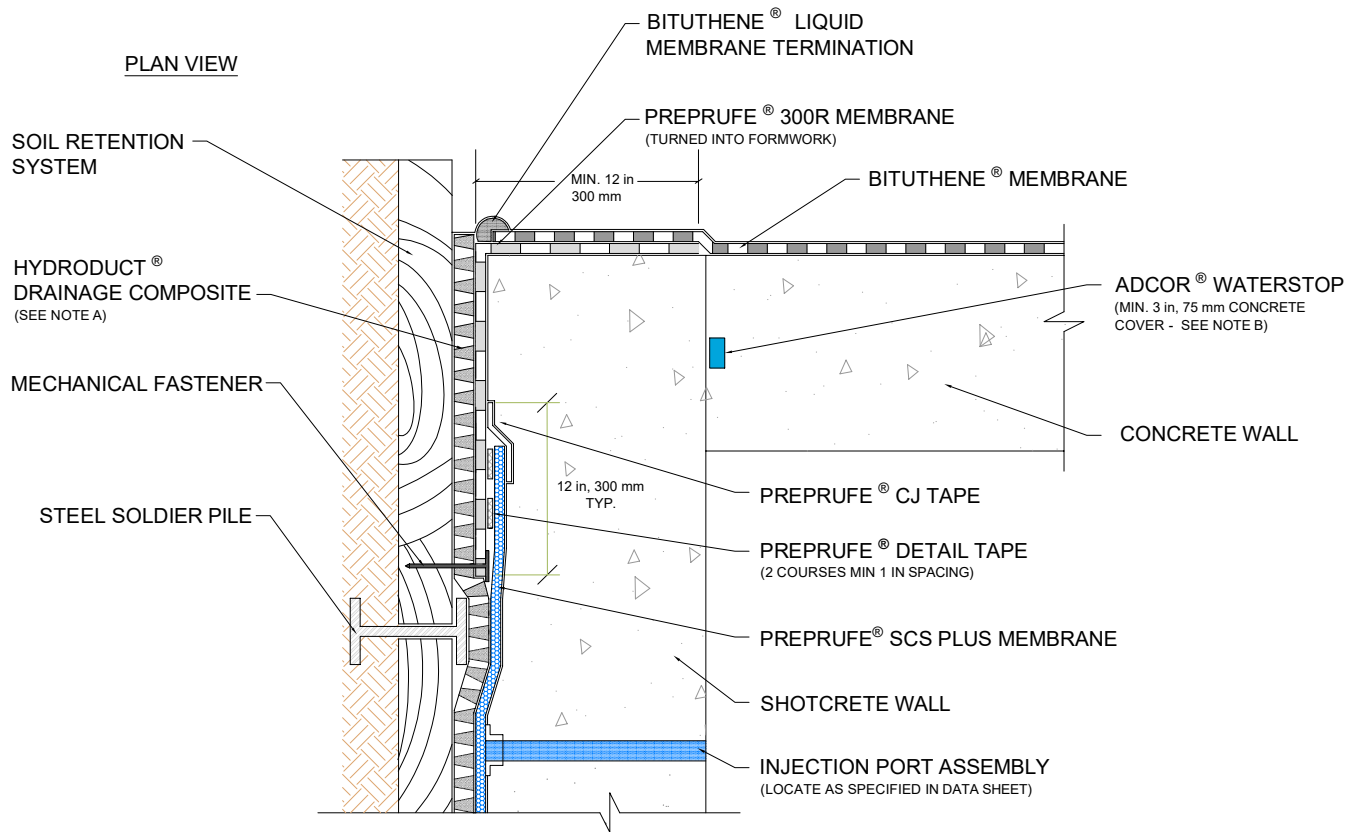


- NOTES:
- A) JOINT WATERPROOFING DESIGN BY OTHERS
 - B) IF HYDRODUCT® IS USED AS PART OF THE DRAINAGE SYSTEM, 6 MIL, 1.5 mm POLY IS REQUIRED BETWEEN THE HYDRODUCT® AND THE PREPRUFE® SCS PLUS MEMBRANE



VERTICAL WALL CONTROL/CONTRACTION JOINT
PREPRUFE® SCS PLUS WATERPROOFING SYSTEM FOR SHOTCRETE

DRAWING: SCS-005
SCALE: NOT TO SCALE
DATE: 03-01-2025
SUPERCEDES: 06-01-2024



- NOTES: A) IF HYDRODUCT® IS USED AS PART OF THE DRAINAGE SYSTEM, 6 MIL, 1.5 mm POLY IS REQUIRED BETWEEN THE HYDRODUCT® AND THE PREPRUFE® SCS PLUS MEMBRANE
- B) GCP MAY REQUIRE AN ALTERNATE GCP WATERSTOP BASED ON DESIGN CONDITIONS



TIE INTO BITUTHENE® (WALL)

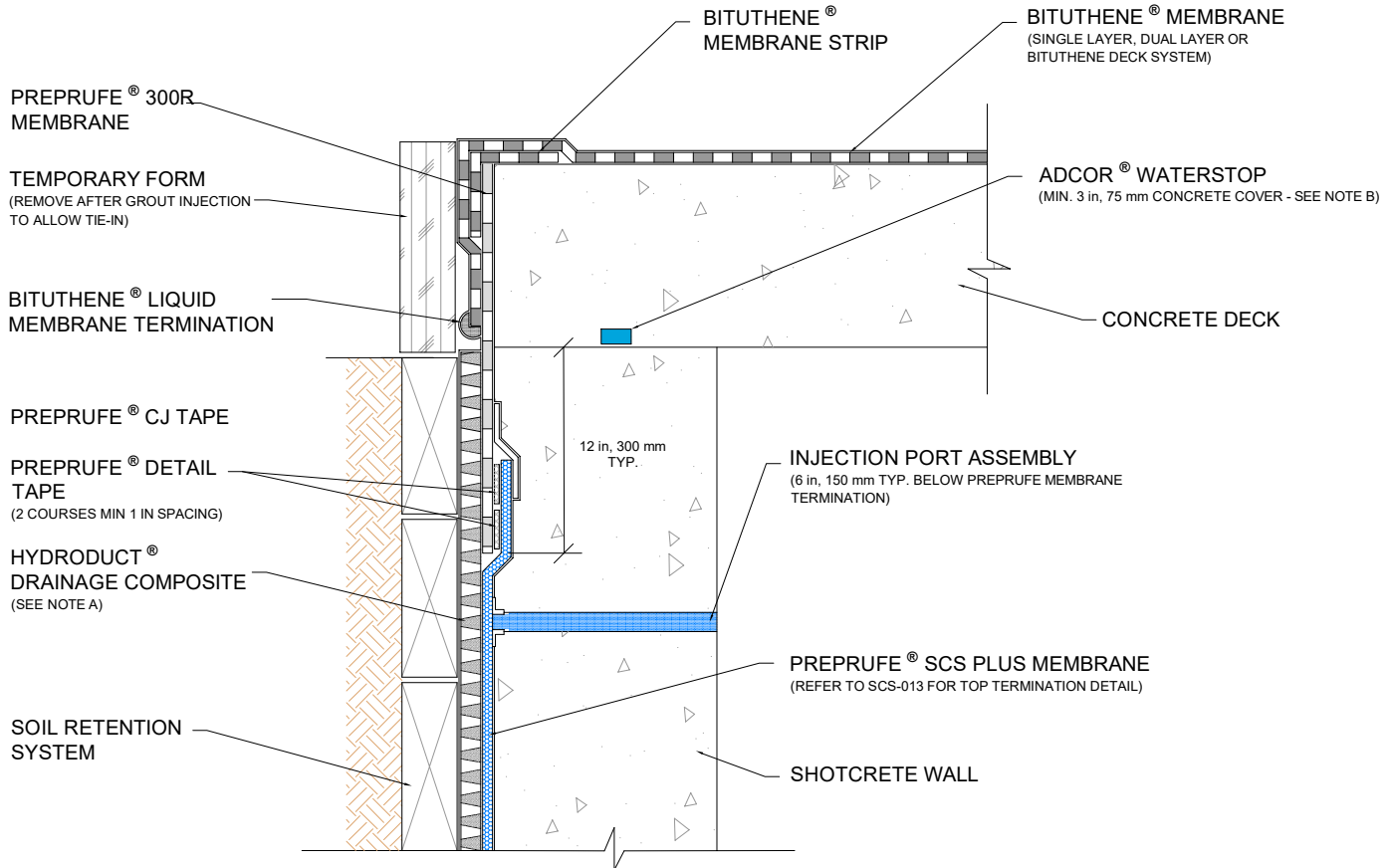
PREPRUFE® SCS PLUS WATERPROOFING SYSTEM FOR SHOTCRETE

DRAWING: SCS-006

SCALE: NOT TO SCALE

DATE: 03-01-2025

SUPERCEDES: 06-01-2024



- NOTES: A) IF HYDRODUCT® IS USED AS PART OF THE ACTIVE DRAINAGE SYSTEM, 6 MIL 1.5 mm POLY IS REQUIRED BETWEEN THE HYDRODUCT® AND THE PREPRUFE® SCS PLUS MEMBRANE
- B) GCP MAY REQUIRE AN ALTERNATE GCP WATERSTOP BASED ON DESIGN CONDITIONS



TIE INTO BITUTHENE® (DECK)

PREPRUFE® SCS PLUS WATERPROOFING SYSTEM FOR SHOTCRETE

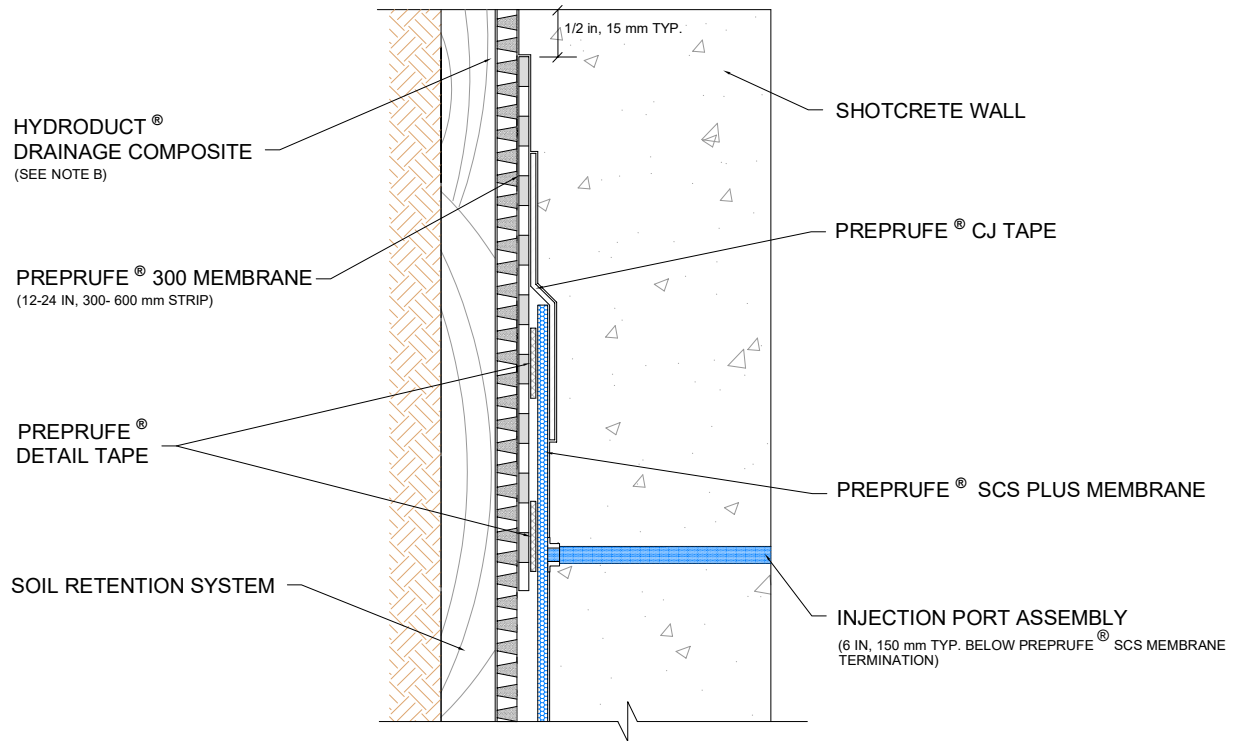
DRAWING: SCS-007

SCALE: NOT TO SCALE

DATE: 03-01-2025

SUPERCEDES: 06-01-2024

PLAN VIEW



NOTES:

- A) TRIM GEOTEXTILE EXTENSION FROM EDGE OF THE PREPRUFE® SCS MEMBRANE PRIOR TO SEALING SIDE TERMINATION WITH PREPRUFE® CJ TAPE
- B) IF HYDRODUCT® IS USED AS PART OF THE DRAINAGE SYSTEM, 6 MIL, 1.5 mm POLY IS REQUIRED BETWEEN THE HYDRODUCT® AND THE PREPRUFE® SCS PLUS MEMBRANE



SIDE TERMINATION

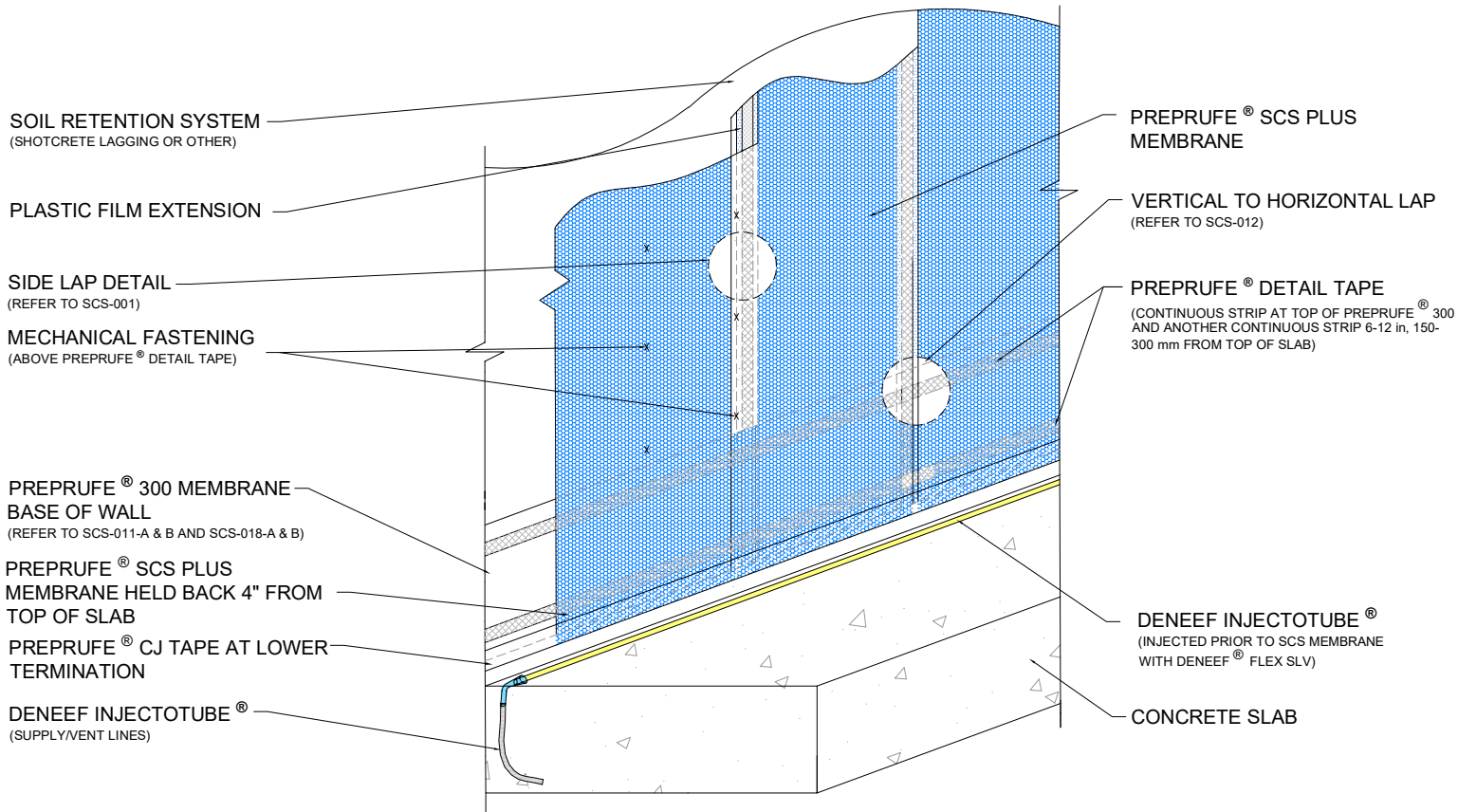
PREPRUFE® SCS PLUS WATERPROOFING SYSTEM FOR SHOTCRETE

DRAWING: SCS-008

SCALE: NOT TO SCALE

DATE: 03-01-2025

SUPERCEDES: 06-01-2024



NOTES:

- A) INJECTION PORT ASSEMBLY NOT SHOWN FOR CLARITY
 B) HYDRODUCT® OR APPROVED FACING MATERIAL NOT SHOWN ON SOIL RETENTION SYSTEM FOR CLARITY
 C) IF HYDRODUCT® IS USED AS PART OF THE DRAINAGE SYSTEM, 6 MIL, 1.5 mm POLY IS REQUIRED BETWEEN THE HYDRODUCT® AND THE PREPRUFE® SCS PLUS MEMBRANE
 D) SEE DETAILS SCS-011-A & B AND SCS-018-A & B FOR SECTION VIEWS AND FURTHER DETAILING INSTRUCTIONS AT BASE OF WALL



BASE OF WALL - ELEVATION DETAIL
PREPRUFE® SCS PLUS WATERPROOFING SYSTEM FOR SHOTCRETE

DRAWING: SCS-009

SCALE: NOT TO SCALE

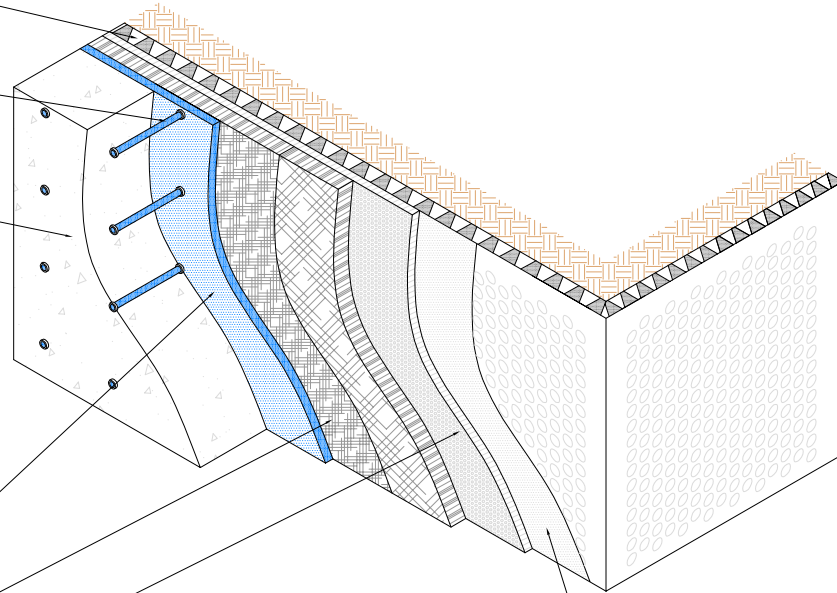
DATE: 03-01-2025

SUPCEDES: 06-01-2024

HYDRODUCT® DRAINAGE
COMPOSITE

INJECTION
PORT ASSEMBLY

SHOTCRETE WALL



- * SCS HYDROPHILIC GROUT
(WETTED TO SHOTCRETE SURFACE)
- * SCS GEOTEXTILE FABRIC
(IMPERMEABLE TO CEMENT PASTE,
PERMEABLE TO SCS GROUT)
- * SCS HDPE BACKSHEET

POLY SHEET BETWEEN HYDRODUCT®
AND PREPRUFE® SCS PLUS
MEMBRANE
(6 MIL 1.5 mm)

* PREPRUFE® SCS PLUS SYSTEM COMPONENTS



PREPRUFE® SCS PLUS
SYSTEM CROSS SECTION SHOTCRETE WATERPROOFING SYSTEM

DRAWING: SCS-010

SCALE: NOT TO SCALE

DATE: 03/01/2025

SUPERCEDES: 08-01-2016