

Table of Contents

Technical Data Sheets

BITUTHENE® 8000	2
BITUTHENE® Adhesive Primer B2 LVC	9
HYDRODUCT® 220	12

Safety Data Sheets

BITUTHENE® 8000	16
BITUTHENE® Adhesive Primer B2 LVC	23
HYDRODUCT® 220	32

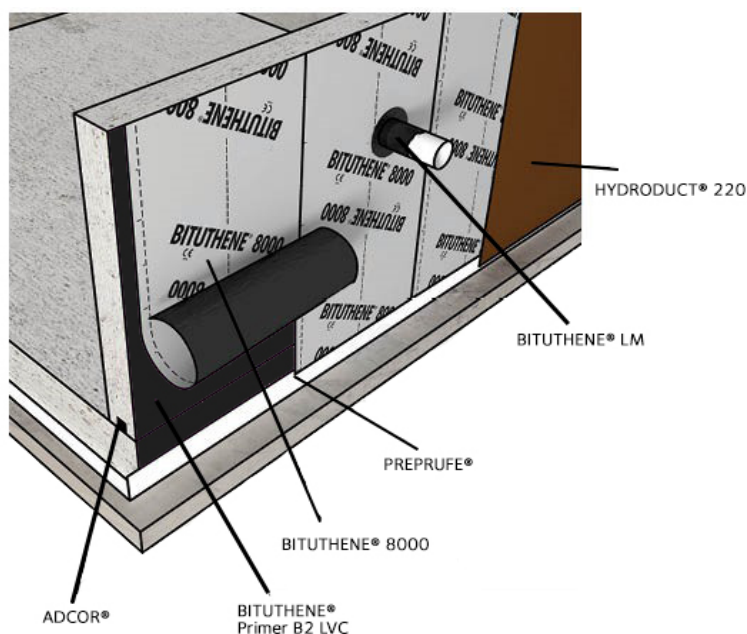
Detail Drawings - All	39
-----------------------	----

BITUTHENE® 8000 Data Sheet

Advanced, self-adhesive membrane with unique HDPE composite film that provides superior physical properties for water, vapor and gas proof application in sub-structures.

Product Description

GCP BITUTHENE® 8000 membrane combines the proven BITUTHENE® adhesive technology with a unique composite, grey-colored carrier film to provide superior performance, easier installation and protection from methane gas.



Drawings are for illustration purposes only.
Please refer to gcpat.com for specific application details.

Advantages

- **Water and vapor proof** – protects basements from ground water and gasses
- **Methane Barrier** – BITUTHENE® 8000 membrane serves as an effective methane barrier, fully compliant with the Los Angeles Research Report (LARR) standards.
- **Gas resistance** – BITUTHENE® 8000 membrane will restrict the ingress of Radon, Benzene, Toluene, Gasoline & other VOCs Trichloroethylene & Tetrachloroethylene (TCE/PCE) into buildings from landfill and naturally occurring sources, satisfying the performance criteria for a gas-resistant membrane.
- **Chemically resistant** – provides effective external protection against most aggressive soils, contaminated ground water and hydrocarbons in suspension
- **Superior performance** – 230 ft (70 m) hydrostatic pressure resistance with ultra-low moisture transmission rate
- **Durability** –
 - **Unique composite film** – engineered for strength, flexibility, gas barrier and a smooth finish
 - This unique composite HDPE film makes BITUTHENE® 8000 extremely tough & durable.

- **Quality Assurance** –
 - Accidental damage which would otherwise be missed, is made more visible by the black compound showing through the light grey film.
 - Printed overlap line ensures minimum laps.
- **Wide application “window” reduces delays** – application temperature from 25°F(-4°C) and damp surface tolerant using BITUTHENE® Adhesive Primer B2 LVC
- **System Compatibility** – Can be combined with PREPRUFE® pre-applied membranes, BITUTHENE® Liquid Membrane, and HYDRODUCT® drainage composites and accessories for waterproofing system solutions

This document is applicable to projects and applications in the US only. Please refer to the local website for further information at gcpat.com, or contact your GCP representative.

Application

- **Below-Grade:** Foundation Walls (Concrete & CMU), Retaining Walls, Basements Decks & Planters: Plaza Decks, Split-Slab Decks, Planter Boxes
- **Methane Barrier:** LARR complying Methane barrier for foundation walls and under horizontal concrete slabs on grade. When installing under slab on grade, do not remove siliconized release paper. All overlap must be minimum 3”.

Approval

- ‘LARR’ – Research Report 26224
- LADBS AC-L137 test report available upon request

System Components

Ancillary Components

- BITUTHENE® Adhesive Primer B2 LVC – low VOC, solvent-based primer to apply BITUTHENE® 8000 membrane to concrete surfaces
- BITUTHENE® liquid membrane – two component, elastomeric, liquid applied detailing compound
- BITUTHENE® mastic – rubberized asphalt-based mastic
- PREPRUFE® Detail Tape – double-sided, self-adhesive tape
- HYDRODUCT® drainage sheet – high impact and creep resistant geo-composite and protection layer

Limitations of Use

- Approved uses only include those uses specifically detailed in this product data sheet and other current product data sheets that can be found at gcpat.com.
- BITUTHENE® membranes are not intended for any other use. Contact GCP Technical Services where any other use is anticipated or intended.
- BITUTHENE® membranes are designed where in-service temperatures will not exceed 130°F (54°C).
- Do not use BITUTHENE® mastic to terminate BITUTHENE® membranes to PREPRUFE® pre-applied waterproofing systems. Terminations to PREPRUFE® membranes should only be done with BITUTHENE® liquid membrane.
- Do not apply BITUTHENE® Membranes over insulation or lightweight insulating concrete

Special Note: When this information is printed from the gcpat.com website, a footer appearing on this document will restrict its applicability to the United States. Note that the information and references in this document is hereby expanded and applied to North, Central and South America.

Safety and Handling Information

Users must read and understand the product label and Safety Data Sheets (SDS's) for each system component before use. All users should acquaint themselves with this information prior to working with the material. Carefully read detailed precaution statements on the product labels and SDS's before use. The most current SDS's can be obtained from the GCP web site at gcpat.com.

Storage

- All BITUTHENE® Membranes should be stored upright
- Observe one-year shelf life and use on a first in, first out basis.
- Store in dry conditions between 40 °F (4.5 °C) – 90 °F (32 °C).
- Store off ground, under tarps, or otherwise protected from rain and ground moisture.
- See Technical Letter #TL-0030 Shelf Life/Storage and Handling of GCP Waterproofing.

Installation

Technical Support, Details and Technical Letters

The most up to date detail drawings and technical letters are available at gcpat.com. Documents in hardcopy as well as information found on websites other than www.gcpat.com may be out of date or in error. Before using this product, it is important that information be confirmed by accessing www.gcpat.com and reviewing the most recent product information, including without limitation product data sheets and contractor manuals, technical bulletins, detail drawings and detailing recommendations. Please review all materials prior to installation of BITUTHENE® 8000 membrane. Support is also available by full-time technically trained GCP field sales representatives and technical service personnel, backed by a central research and development technical services staff. For technical assistance with detailing and problem solving please contact your local representative. A GCP Representative locator is available at www.gcpat.com.

Temperature

- Apply BITUTHENE® 8000 Membrane only in dry weather and when air and surface temperatures are above 25 °F (–4 °C).
- Apply BITUTHENE® adhesive primer B2 LVC in dry weather above 25 °F (–4 °C). (See separate product information sheet.)

Surface Preparation

Surfaces must be structurally sound and free of voids, spalled areas, loose aggregate and sharp protrusions. Remove contaminants such as grease, oil and wax from exposed surfaces. Remove dust, dirt, loose stone and debris. Concrete must be properly cured (minimum 7-days for normal structural concrete and 14-days for lightweight structural concrete). Certain conditions may require longer dry times, such as unusually wet weather or late removal of forms. On vertical applications BITUTHENE® Adhesive Primer B2 LVC may be used to allow priming and installation of membrane on damp surfaces or green concrete. Priming may begin in this case as soon as the concrete will maintain structural integrity. Use form release agents which will not transfer to the concrete. Remove forms as soon as possible from below horizontal slabs to prevent entrapment of excess moisture. Excess moisture may lead to blistering of the membrane. Cure concrete with clear, resin-based curing compounds which do not contain oil, wax or pigment. See Technical Letter #TL-0005 Curing Compounds and Form Release Agents. Except with BITUTHENE® Adhesive Primer B2 LVC, allow concrete to thoroughly dry following rain. Do not apply any products to frozen concrete.

Repair defects such as spalled or poorly consolidated areas. Remove sharp protrusions and form match lines. For rough or uneven deck surfaces use BITUTHENE® Deck Prep as a repair and leveling agent. See Above Grade Waterproofing BITUTHENE® Deck Prep product information sheet for details. On masonry surfaces, apply a parge coat to rough concrete block and brick walls or trowel cut mortar joints flush to the face of the concrete blocks.

Priming

- Apply BITUTHENE® adhesive primer B2 LVC by a lamb's wool roller at a coverage rate of 325–425 ft²/gal (7.5–10.0 m²/L). Allow primer to dry one hour or until tack-free.
- Dry time may be longer in cold temperatures. Re-prime areas if contaminated by dust. If the work area is dusty, apply membrane as soon as the primer is dry. In general, priming should be limited to what can be covered within 24-hours
- Do not apply any primer onto BITUTHENE® membrane.

Application on Vertical Surfaces

Apply BITUTHENE®8000 membranes in lengths up to 8 ft (2.5 m). Overlap all seams at least 2.5 in. (65 mm). On walls higher than eight feet, apply membranes in two or more “shingled” lifts, with the upper sheet overlapping the lower by at least 2.5 in. (65 mm). Roll all membranes with a hand roller.

Terminate the membranes at grade level. Press each membrane firmly to the wall with the butt end of a hardwood tool such as a hammer handle or secure into a reglet. Failure to use heavy pressure at terminations can result in a poor seal.

All top-of-wall terminations should be sealed with BITUTHENE® LM liquid membrane or BITUTHENE® mastic. A termination bar may be used to ensure a tight seal. If the wall has been only partially covered by the end of the working day, apply a maximum ¼” bead of BITUTHENE® mastic tooled thin or BITUTHENE® LM liquid membrane along the exposed edges of the membrane at its temporary terminations to prevent vertical drainage of precipitation, which could undermining the membrane adhesion. Terminate the membranes at the base of the wall if the bottom of the interior floor slab is at least 6 in. (150 mm) above the footing.

Otherwise, use appropriate inside corner detail where the wall and footing meet. A 1/8 in. (3 mm) x 1 in. (25 mm) aluminum termination bar aligned with the top of the membrane is recommended for terminations on CMU, in earth covered decks and in earth-bermed applications where soil cannot be fully compacted. See technical letter 26 about BITUTHENE® membrane terminations for additional information.

Application on Horizontal Surfaces

Note: PREPRUFE® pre-applied membranes are strongly recommended and are the preferred products for below slab applications or for any application where the membrane is applied before concrete is poured. See PREPRUFE® membrane waterproofing product information sheets at gcpat.com.

All horizontal surfaces to receive BITUTHENE®8000 membranes should be sloped to drain at least 1/8 in./ft. (11 mm/m). When a minimum slope of 1/8 in. /ft. (11 mm/m) cannot be achieved, two layers of BITUTHENE®8000 membranes or 80-mils of BITUTHENE® Deck Prep surface treatment and one layer of BITUTHENE®8000 membranes maybe an option. Contact your local GCP representative for more details.

Apply the membranes from the low point to the high point so that laps shed water. Overlap all seams at least 3 in. (76.2 mm). Stagger all end laps. Roll the entire membrane firmly, and completely as soon as possible. Use a linoleum roller or standard water-filled garden roller less than 30 in. (760 mm) wide, weighing a minimum of 75 lbs (34 kg) when filled. Cover the face of the roller with a “conforming” material such as 1/2 in. (13 mm) plastic foam sheeting or two wraps of indoor-outdoor carpet to allow the membrane to fully contact the primed substrate. Seal all T-joints and membrane terminations with BITUTHENE® LM liquid membrane by the end of the day of membrane application.

For Methane Barrier application under slabs on grade, leave release paper on. Measure 3” of side lap and end lap, rip the release paper only from the 3” section and make the overlap. Roll the entire overlap area firmly.

Repairs, Protection & Drainage

Patch tears and inadequately lapped seams with the same membrane as used on the surrounding surface. Clean the in place membrane with a damp cloth and completely dry. Slit fish mouths and repair with a patch extending 6 in. (150 mm) in all directions from the slit and seal edges of the patch with BITUTHENE® Liquid Membrane. Inspect the membrane thoroughly before covering and make all repairs prior to testing, covering or backfilling.

- Protect BITUTHENE® membranes immediately after application to avoid damage from other trades, construction materials or backfill, using HYDRODUCT® drainage composite boards. See HYDRODUCT® product data sheet at gcpat.com.

Drainage

HYDRODUCT® drainage composites are recommended for both active drainage and protection of the membrane

Insulation

Always apply BITUTHENE® Membrane directly to primed or conditioned structural substrates. Insulation, if used, must be applied over the membrane. Do not apply BITUTHENE® Membranes over insulation or lightweight insulating concrete.

Supply

BITUTHENE® 8000	3.28 ft X 65.6 ft Roll (215 sq ft) [1 m x 20 m, 20 sq m Roll] Weight 36kg
-----------------	--

Physical Properties

PROPERTY	TYPICAL VALUE	TEST METHOD
Color	light grey	
Application Temp	>25 °F (-4 °C)	
Thickness	60 mils (1.5 mm)	ASTM D3767 - method A
Low temperature Flexibility, 180° bend over 1 in. (25 mm) mandrel at -25 °F (-32 °C)	Unaffected/Pass	ASTM D1970
Tensile strength, film	5,500 psi (38 MPa)	ASTM D412
Elongation, ultimate failure of rubberized asphalt	300%	ASTM D412 ¹
Crack cycling at -25 °F (-32 °C), (1/8 inch) 3.2mm	Unaffected/Pass	ASTM C1305
Lap shear	30 lbf (133 N)	ASTM D1002 ¹
Peel strength	12 lbf/in. (2,100 N/m)	ASTM D903 ²
Puncture resistance, membrane	63 lbf (280 N)	ASTM E154
Resistance to hydrostatic head	230 ft (70m) of water	ASTM D5385
Water Vapor Permeance	<0.03 perms	ASTM E96, Method B
Water absorption	<0.05%	ASTM D570
VOC permeance	Not Detectable Membrane, Seam	ASTM F 739 Open loop
Methane Permeability	<10 mL/day.m ² .atm	ASTM D1434-82
Methane Permeability, Overlaps	<10 mL/day.m ² .atm	ASTM D1434
Diffusion Coefficient, TCE	<5.1 x 10 ⁻¹³ m ² /s	Calculated
Diffusion Coefficient, PCE	<5.1 x 10 ⁻¹³ m ² /s	Calculated
Diffusion Coefficient, Benzene	<2.7 x 10 ⁻¹³ m ² /s	Calculated
Diffusion Coefficient, Toluene	<1.1 x 10 ⁻¹³ m ² /s	Calculated
Diffusion Coefficient, Ethylbenzene	<2.7 x 10 ⁻¹³ m ² /s	Calculated
Diffusion Coefficient, Xylene	<1.2 x 10 ⁻¹⁴ m ² /s	Calculated

Footnotes:

1. The test is run at a rate of 2 in. (50 mm) per minute.
2. With BITUTHENE[®] Primer B2 LVC
3. Individual roll length may vary +/- 1%

All declared values shown in this data sheet are based on test results determined under laboratory conditions and with the product sample taken directly from stock in its original packing without any alteration or modification of its component parts.

gcpat.com | North America Customer Service: +1 (877) 423 6491

The information here is based on data and knowledge considered to be true and accurate, but without warranty. Our conditions of sale apply to all goods supplied by us. No statement, recommendation, or suggestion is intended for any use that would infringe any patent, copyright, or other third party right.

GCP and BITUTHENE are trademarks, which may be registered in the United States and/or other countries, of GCP Applied Technologies Inc. This trademark list has been compiled using available published information as of the publication date and may not accurately reflect current trademark ownership or status.

© Copyright 2022 GCP Applied Technologies Inc. All rights reserved.

GCP Applied Technologies Inc., 2325 Lakeview Parkway, Suite 400, Alpharetta, GA 30009, USA

GCP Canada, Inc., 294 Clements Road, West, Ajax, Ontario, Canada L1S 3C6

This document is only current as of the last updated date stated below and is valid only for use in the United States. It is important that you always refer to the currently available information at the URL below to provide the most current product information at the time of use. Additional literature such as Contractor Manuals, Technical Bulletins, Detail Drawings and detailing recommendations and other relevant documents are also available on www.gcpat.com. Information found on other websites must not be relied upon, as they may not be up-to-date or applicable to the conditions in your location and we do not accept any responsibility for their content. If there are any conflicts or if you need more information, please contact GCP Customer Service.

Last Updated: 2025-06-13

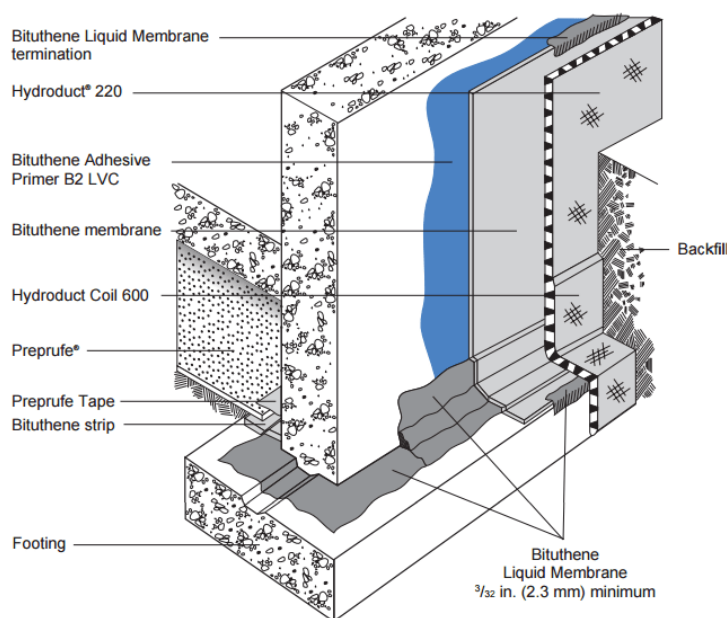
gcpat.com/solutions/products/bituthene-post-applied-waterproofing/bituthene-8000-data-sheet

BITUTHENE® Adhesive Primer B2 LVC Data Sheet

Specially formulated low VOC primer for use with GCP self-adhered membranes on green concrete or damp substrates

Product Description

BITUTHENE® Adhesive Primer B2 LVC is a low VOC primer in solvent specially formulated to provide good initial adhesion of GCP self-adhered membranes. In addition, its formulation promotes the adhesion of GCP self-adhered membranes to green concrete and damp surfaces. The VOC (Volatile Organic Compound) content is <200 g/L and is compliant with all state and local VOC requirements for adhesives and sealants. Architectural and industrial maintenance regulations limit the VOC content in products classified as adhesive primers. Refer to technical letters at gcpat.com for the most current list of allowable limits.



Use

BITUTHENE® Adhesive Primer B2 LVC is used to prime green concrete (less than seven day cure for normal structural concrete). It is also used to prime damp concrete, masonry, gypsum sheathing or wood surfaces on which GCP self-adhered membranes will be applied.

BITUTHENE® Adhesive Primer B2 LVC is used for vertical and horizontal applications at 25 °F (-4 °C) or above.

Application Procedures

Safety, Storage and Handling Information

GCP products must be handled properly. Vapors from solvent-based primers and mastic are harmful and flammable. For these products, the best available information on safe handling, storage, personal protection, health and environmental considerations has been gathered. SDS (Safety Data Sheet) are available at gcpat.com and users should acquaint themselves with this information. Carefully read detailed precaution statements on product labels and the SDS before use.

Supply

BITUTHENE® PRIMER B2 PROPERTY	VALUE
Unit Size	5 gal (18.9 L) pail
Weight	44 lbs (20 kg)/pail
Units per pallet	48 pails
Coverage	325–425 ft ² /gal (7.5–10.0 m ² /L)

BITUTHENE® Adhesive Primer B2 LVC is subject to a 18 months standard shelf life provided it is stored as per GCP recommendation.

Product Application

BITUTHENE® Adhesive Primer B2 LVC may be applied by roller or brush. Use a heavy nap roller made of natural material, such as lamb's wool.

Stir until a uniform color and consistency is achieved.

Apply it to clean, dirt free, frost-free surfaces at an approximate coverage rate of 325–425 ft²/gal (7.5–10.0 m²/L). Do not apply to frozen concrete or to areas with standing or visible water. Do not use during wet weather. Allow BITUTHENE® Adhesive Primer B2 LVC to dry one hour or until tack-free. Dry time may be longer in cold temperatures. Deep puddles of primer should be avoided as this will lengthen drying time. Rollers or brushes should be dipped into pans. Avoid pouring primer directly onto a horizontal substrate. Do not apply directly to GCP self-adhered membrane.

In general, priming should be limited to an area that can be covered with membrane within 24 hours. Areas that accumulate significant amounts of dust or dirt must be reprimed before membrane is applied.

Although it may be used on green concrete and damp surfaces, moisture may become trapped under the membrane. This may result in blistering, particularly on warm, sunny days. Therefore, cover the membrane as soon as possible to minimize blistering. If blistering occurs, allow membrane to cool and re-roll with heavy roller. Blisters over 4 in. (100 mm) in diameter should be cut and patched.

Clean tools with mineral spirits at the end of each day. Mineral spirits is a combustible liquid and should be used only in accordance with the manufacturer's safety recommendations. **Do not use solvents to clean hands or skin.**

gcpat.com | North America Customer Service: 1-866-333-3726

We hope the information here will be helpful. It is based on data and knowledge considered to be true and accurate, and is offered for consideration, investigation and verification by the user, but we do not warrant the results to be obtained. Please read all statements, recommendations, and suggestions in conjunction with our conditions of sale, which apply to all goods supplied by us. No statement, recommendation, or suggestion is intended for any use that would infringe any patent, copyright, or other third party right.

BITUTHENE is a registered trademark, which may be registered in the United States and/or other countries, of GCP Applied Technologies Inc. This trademark list has been compiled using available published information as of the publication date and may not accurately reflect current trademark ownership or status.

© Copyright 2018 GCP Applied Technologies Inc. All rights reserved

GCP Applied Technologies Inc., 2325 Lakeview Parkway, Suite 400, Alpharetta, GA 30009, USA

GCP Canada, Inc., 294 Clements Road, West, Ajax, Ontario, Canada L1S 3C6

This document is only current as of the last updated date stated below and is valid only for use in the United States. It is important that you always refer to the currently available information at the URL below to provide the most current product information at the time of use. Additional literature such as Contractor Manuals, Technical Bulletins, Detail Drawings and detailing recommendations and other relevant documents are also available on www.gcpat.com. Information found on other websites must not be relied upon, as they may not be up-to-date or applicable to the conditions in your location and we do not accept any responsibility for their content. If there are any conflicts or if you need more information, please contact GCP Customer Service.

Last Updated: 2025-05-13

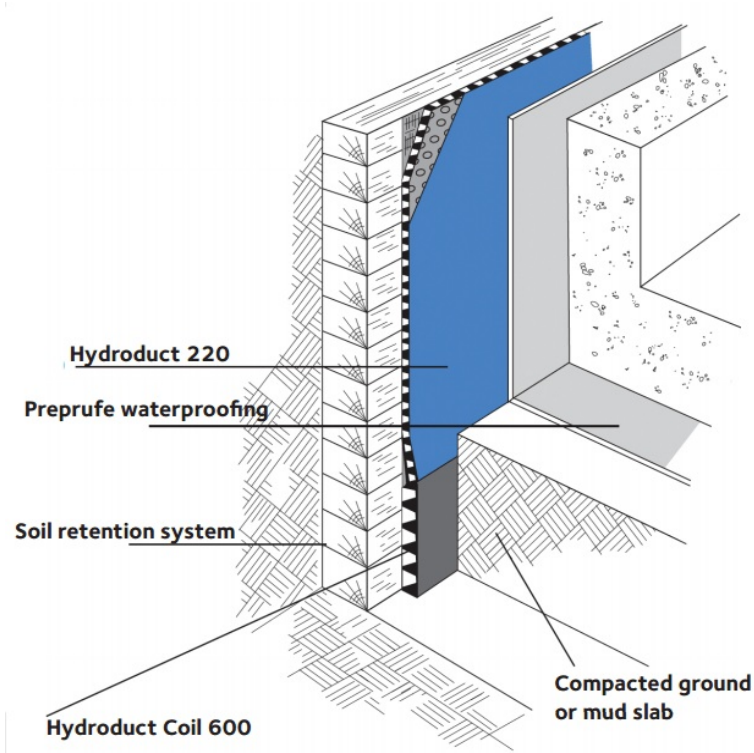
gcpat.com/solutions/products/bituthene-post-applied-waterproofing/bituthene-adhesive-primer-b2-lvc

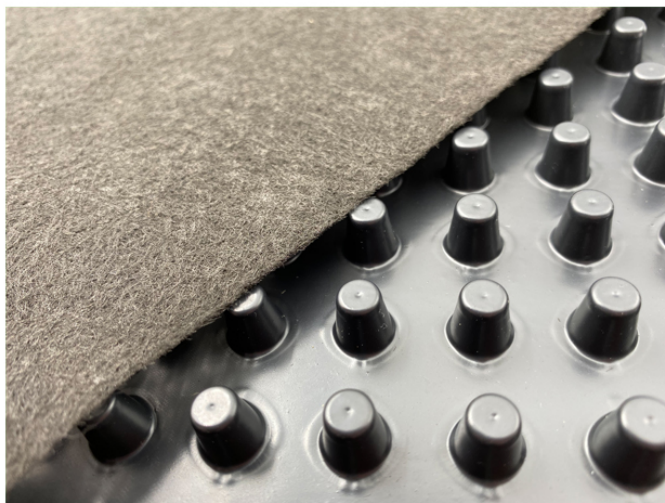
HYDRODUCT® 220 Data Sheet

Drainage composite for use as a combined drainage and protection layer with GCP waterproofing membranes

Product Description

HYDRODUCT® 220 is a strong, preformed 0.44 in. (11 mm) thick geocomposite drainage sheet system, comprising a hollow studded polypropylene core, covered on one side with a nonwoven, needle punched polypropylene filter fabric and on the other side with a smooth polymeric film.





Uses

HYDRODUCT® 220 is designed primarily for use with waterproofing materials in vertical installations.

HYDRODUCT® 220 has been specially developed to provide a simple and highly practical collector and deflector of unwanted ground water on foundation walls, retaining walls, tunnels and planters. It can be used with PREPRUFE®, PROCOR®, or BITUTHENE® waterproof membranes. When installed it protects the membrane from damage and minimizes the build-up of percolated surface water against the structure. The construction of the studded sheet also creates an air void to isolate the structure from the effects of the surrounding ground.

HYDRODUCT® 220 has been designed to withstand ground pressures and the compaction forces of wet concrete to maintain a high water flow capacity. The drainage sheet must be connected into the site drainage system to minimize hydrostatic build-up and collect infiltrated water using HYDRODUCT® Coil 600. Traditional perforated pipes can also be used wrapped and linked with the geotextile filter fabric to prevent clogging.

While HYDRODUCT® 220 is designed primarily for use in vertical installations, it can be used in specific pedestrian walkways applications, where the load will not exceed 15000 psf.

For any other horizontal application, regardless of the type of overburden, it is recommended to use HYDRODUCT® 660.

Product Advantages

- Enhances waterproofing—eliminates hydrostatic pressure build-up
- Efficient water collector/deflector—can be used as a sandwich drainage layer between lagging and the reinforced concrete structure
- Smooth polymeric sheet—compatible with PREPRUFE®, PROCOR®, or BITUTHENE® membranes
- Convenient drainage and protection layer—serves as robust membrane protection and drainage

- Geotextile fabric filter—allows ground water to pass into the drain core while restricting the movement of soil particles
- High flow capacity
- Rot proof—unaffected by permanent immersion in water, bacteria, dilute acids and alkalis
- Economical—eliminates imported aggregate drainage layers
- Studded core—allows water to flow to designated drainage collection points

Application Procedures

Safety, Storage and Handling Information

All construction products must be handled properly. Safety Data Sheets (SDS) are available, and users should acquaint themselves with this information. Carefully read detailed precaution statements on product labels and the SDS before use.

Installation

Position HYDRODUCT® so that the geotextile fabric filter is facing toward the groundwater, soil or overburden. The solid polymeric film provides extra protection for waterproofing such as PROCOR® or BITUTHENE® and should not be removed. In vertical applications, HYDRODUCT® 220 Drainage Composites can be applied to the substrate vertically but should extend from the perimeter discharge pipe to a point approximately 6 in. (150 mm) below the anticipated grade line.

When adhering HYDRODUCT® 220 directly to BITUTHENE® waterproofing membranes, PREPRUFE® Detail Tape should be used. When using PREPRUFE® Detail Tape, press firmly to ensure good adhesion.

Substrate and job site conditions will determine the attachment pattern. Additional consideration should be given in high wind exposures. Abut adjacent rolls with excess fabric overlapping in shingle fashion.

For inside and outside corners, abut adjoining drainage composite at the corner. Cover open core with extra geotextile filter fabric. The exposed core along the top terminations should be covered with a strip of geotextile to prevent intrusion of soil into core. At the bottom termination extend the HYDRODUCT® 220 Drainage Composite out from the structure so that it passes behind and under the perimeter discharge pipe. Additional geotextile should be wrapped over the pipe to prevent soil intrusion.

To secure HYDRODUCT® 220 around protrusions, apply PREPRUFE® Detail Tape around the protrusion in a picture frame configuration. Cut HYDRODUCT® 220 to fit snugly around the protrusion. Press the cut edge firmly into PREPRUFE® Detail Tape.

HYDRODUCT® 220 should be covered promptly. Do not leave HYDRODUCT® 220 exposed to sunlight for more than two weeks.

Motor vehicles, construction equipment or other trades should never be allowed directly on the HYDRODUCT® 220. This point should be carefully considered in case of pedestrian walkways applications (up to 15000 psf).

Supply

HYDRODUCT [®]	
COMPLIMENTARY MATERIALS	
Roll size	4 ft x 50 ft (1.2 m x 15.2 m) 200 ft ² (18.6 m ²)
Packaging	6 rolls/pallet
Weight	39 lbs (17.7 kg)/roll
PREPRUFE [®] Detail Tape	2 in. x 50 ft (50 mm x 15 m) rolls

Physical Properties

PROPERTY	TYPICAL VALUE	TEST METHOD
DRAINAGE CORE		
GEOTEXTILE	TYPICAL VALUE	TEST METHOD
Thickness	0.40 in. (10 mm) nominal	ASTM D1777
Compressive strength	15,000 lbs/ft ² (718 kPa)	ASTM D6364
Flow rate (gradient 1.0,)	18 gal/min./ft (224 L/min./m)	ASTM D4716
Tensile strength	100 lbs (445 N)	ASTM D4632
Apparent opening size	70 U.S. sieve (0.21 mm)	ASTM D4751
Flow rate	165 gal/min./ft ² (6724 L/min./m ²)	ASTM D4491
CBR puncture	275 lbs (1.23 kN)	ASTM D6241

gcpat.com | North America Customer Service: 1-866-333-3726

We hope the information here will be helpful. It is based on data and knowledge considered to be true and accurate, and is offered for consideration, investigation and verification by the user, but we do not warrant the results to be obtained. Please read all statements, recommendations, and suggestions in conjunction with our conditions of sale, which apply to all goods supplied by us. No statement, recommendation, or suggestion is intended for any use that would infringe any patent, copyright, or other third party right.

HYDRODUCT, PREPRUFE, PROCOR, and BITUTHENE are trademarks, which may be registered in the United States and/or other countries, of GCP Applied Technologies, Inc. This trademark list has been compiled using available published information as of the publication date and may not accurately reflect current trademark ownership or status.

© Copyright 2024 GCP Applied Technologies, Inc. All rights reserved.

GCP Applied Technologies Inc., 2325 Lakeview Parkway, Suite 400, Alpharetta, GA 30009, USA
GCP Canada, Inc., 294 Clements Road, West, Ajax, Ontario, Canada L1S 3C6

This document is only current as of the last updated date stated below and is valid only for use in the United States. It is important that you always refer to the currently available information at the URL below to provide the most current product information at the time of use. Additional literature such as Contractor Manuals, Technical Bulletins, Detail Drawings and detailing recommendations and other relevant documents are also available on www.gcpat.com. Information found on other websites must not be relied upon, as they may not be up-to-date or applicable to the conditions in your location and we do not accept any responsibility for their content. If there are any conflicts or if you need more information, please contact GCP Customer Service.

1 Identification

Product identifier

Trade name: ***Bituthene 8000 (NA) - Meter Wide***

SDS ID Number: 745

Relevant identified uses of the substance or mixture, and uses advised against:

Waterproofing.

Specialty construction product. Not intended for other uses.

Details of the supplier of the safety data sheet

Manufacturer/Supplier:

GCP Applied Technologies
62 Whittemore Avenue
Cambridge, MA 02140 USA

GCP Canada, Inc.
294 Clements Road W.
Ajax, Ontario L1S 3C6 Canada

Information department:

Environmental Health & Safety
USA: +1-617-876-1400 (24 hours)
+1-800-354-5414 (8AM - 5PM) Not functional within Massachusetts
CAN: 1-905-683-8561 (24 hours)
Email address: msds.gcp@gcpat.com

Transport Emergency: Chemtrec +1-800-424-9300 (24 hours)

2 Hazard(s) identification

Classification of the substance or mixture

The product is not classified, according to the Globally Harmonized System (GHS).

Additional information:

SDS's are not required for finished articles. Nevertheless, the following information is provided to assist with safe use.

Label elements:

Hazard pictograms Not applicable.

Not applicable.

Hazard statements Not applicable.

Hazard description:

NFPA ratings (scale 0 - 4)



Health = 1
Fire = 0
Reactivity = 0

HMIS-ratings (scale 0 - 4)



Health = 1
Flammability = 0
Reactivity = 0

Other hazards Contact with residue from adhesive may cause eye and skin irritation.

Safety Data Sheet

Printing date 01/27/2022

Version Number 1.0

Reviewed on 01/27/2022

Trade name: *Bituthene 8000 (NA) - Meter Wide*

(Cont. from page 1)

Results of PBT and vPvB assessment**PBT:** Not applicable.**vPvB:** Not applicable.**3 Composition/information on ingredients****Chemical characterization: Mixture****Hazardous components:** Not applicable.**Additional information:** Non-hazardous ingredients may be listed in Section 15; Right-To-Know disclosure.**4 First-aid measures****Description of first aid measures****General information:** Get medical advice/attention if you feel unwell.**After inhalation:** No special measures required.**After skin contact:** If skin irritation occurs, consult a doctor.**After eye contact:**

Rinse cautiously with water for several minutes.

If symptoms persist, consult a physician.

After swallowing:

Rinse mouth.

Do NOT induce vomiting.

Information for doctor:**Most important symptoms and effects, both acute and delayed** No further relevant information available.**Indication of any immediate medical attention and special treatment needed** No further relevant information available.**5 Fire-fighting measures****Special hazards arising from the substance or mixture** No further relevant information available.**Advice for firefighters****Protective equipment:** Wear personal protective equipment.**Additional information** Collect contaminated fire fighting water separately. It must not enter the sewage system.**6 Accidental release measures****Personal precautions, protective equipment and emergency procedures**

Wear protective equipment. Keep unprotected persons away.

Methods and material for containment and cleaning up: Pick up mechanically.**Reference to other sections**

See Section 7 for information on safe handling.

See Section 8 for information on personal protection equipment.

See Section 13 for disposal information.

Safety Data Sheet

Printing date 01/27/2022

Version Number 1.0

Reviewed on 01/27/2022

Trade name: *Bituthene 8000 (NA) - Meter Wide*

(Cont. from page 2)

7 Handling and storage

Handling:

Precautions for safe handling

Wash thoroughly after handling.

Avoid eye and skin contact with residue from adhesive.

Release liners are slippery. Remove from work area immediately after membrane application.

Membrane is slippery when wet or covered with frost.

Release liners may cause slip and trip hazards.

Do not eat, drink or smoke when using this product.

Wash skin after handling.

For professional use only. Keep out of children's reach.

Information about protection against explosions and fires:

Removal of release liner may generate a static electrical discharge (spark).

Conditions for safe storage, including any incompatibilities

Storage:

Information about storage in one common storage facility: No special measures required.

Further information about storage conditions: Keep receptacle tightly sealed.

Specific end use(s) No further relevant information available.

8 Exposure controls/personal protection

Additional information about design of technical systems: No further data; see item 7.

Control parameters

Components with limit values that require monitoring at the workplace:

The product does not contain any relevant quantities of materials with critical values that have to be monitored at the workplace.

Additional information:

The lists that were valid during the creation were used as basis.

Canadian employers must consult the exposure limits in their province.

Exposure controls

Personal protective equipment:

General protective and hygienic measures:

Avoid contact with the eyes and skin.

The usual precautionary measures for handling chemicals should be followed.

Breathing equipment:

Control exposure to ingredients with workplace control parameters if mentioned above. If no ingredients are listed, respiratory protection is generally not required.

If exposure limits are listed and may be exceeded, use approved respiratory protective equipment and filter type appropriate for the listed ingredients. (NIOSH, CEN, etc.).

Protection of hands: Gloves should be worn to prevent skin contact and should be impermeable and resistant to the product.

Material of gloves Rubber or other impervious gloves should be worn to prevent skin contact.

(Cont. on page 4)

USGHS

Safety Data Sheet

Printing date 01/27/2022

Version Number 1.0

Reviewed on 01/27/2022

Trade name: *Bituthene 8000 (NA) - Meter Wide*

(Cont. from page 3)

Eye protection:



Safety glasses with side shield protection.

Body protection: Use personal protective equipment as required.

* 9 Physical and chemical properties

Information on basic physical and chemical properties

General Information

Appearance:

Form:	Solid
Color:	According to product specification
Odor:	Characteristic
Odor threshold:	Not determined.

pH-value (~): Not applicable.

Change in condition

Melting point/Melting range:	Undetermined.
Boiling point/Boiling range:	Undetermined.
Flash point:	Not applicable.

Flammability (solid, gaseous): Not determined.

Ignition temperature: Undetermined.

Decomposition temperature: Not determined.

Auto igniting: Not determined.

Danger of explosion: Product does not present an explosion hazard.

Explosion limits:

Lower:	Not determined.
Upper:	Not determined.

Vapor pressure:	Not applicable.
Density: (~) at 20 °C (68 °F)	1 g/cm ³ (8.3 lbs/gal)
Relative density	Not determined.
Vapor density	Not determined.

Solubility in / Miscibility with Water: Insoluble.

Partition coefficient (n-octanol/water): Not determined.

Viscosity:

Dynamic:	Not applicable.
Kinematic:	Not applicable.
Molecular weight	Not determined.

Other information No further relevant information available.

* 10 Stability and reactivity

Reactivity

Stable under normal conditions.
No further relevant information available.

Chemical stability

Thermal decomposition: No decomposition if used according to specifications.

(Cont. on page 5)

USGHS

Safety Data Sheet

Printing date 01/27/2022

Version Number 1.0

Reviewed on 01/27/2022

Trade name: *Bituthene 8000 (NA) - Meter Wide*

(Cont. from page 4)

Possibility of hazardous reactions

No dangerous reactions known.

No further relevant information available.

Conditions to avoid No further relevant information available.**Incompatible materials:** No further relevant information available.**Hazardous decomposition products:** Carbon monoxide and carbon dioxide

*

11 Toxicological information**Information on toxicological effects****Acute toxicity:****Primary irritant effect:****on the skin:** No irritating effect expected**on the eye:** No irritating effect expected**inhalation:** No irritating effect expected**Additional toxicological information:****Carcinogenic categories****IARC (International Agency for Research on Cancer) Human Carcinogenicity:**
Group 1- Positive, Group 2A- Probable, Group 2B- Possible, Group 3- Not Classifiable

None of the ingredients are listed.

NTP (National Toxicology Program)**K–Known to be carcinogenic, R–May reasonably be anticipated to be carcinogenic**

None of the ingredients are listed.

OSHA-Ca (Occupational Safety & Health Administration)

None of the ingredients are listed.

12 Ecological information**Toxicity****Aquatic toxicity:** No further relevant information available.**Persistence and degradability** No further relevant information available.**Behavior in environmental systems:****Bioaccumulative potential** No further relevant information available.**Mobility in soil** No further relevant information available.**Additional ecological information:****General notes:** Not known to be hazardous to water.**Results of PBT and vPvB assessment****PBT:** Not applicable.**vPvB:** Not applicable.**Other adverse effects** No further relevant information available.

USGHS

(Cont. on page 6)

Safety Data Sheet

Printing date 01/27/2022

Version Number 1.0

Reviewed on 01/27/2022

Trade name: *Bituthene 8000 (NA) - Meter Wide*

(Cont. from page 5)

* 13 Disposal considerations

Disposal methods:

Consult all regulations (federal, state, provincial, local) or a qualified waste disposal firm when characterizing product for disposal. Dispose of waste in accordance with all applicable regulations.

Recommendation:

Must not be disposed of together with household garbage. Do not allow product to reach sewage system.

Uncleaned packagings:

Recommendation: Dispose of contents/container in accordance with local/regional/national/international regulations.

* 14 Transport information

UN-Number

DOT, IMDG, IATA

Not applicable.

UN proper shipping name

DOT, IMDG, IATA

Not applicable.

Transport hazard class(es)

DOT, IMDG, IATA

Class

Not applicable.

Packing group

DOT, IMDG, IATA

Not applicable.

Environmental hazards:

Marine pollutant:

No

Special precautions for user

Not applicable.

Transport/Additional information: Not classified as a dangerous good for transport by road, rail or air.

DOT

Remarks:

Not Regulated.

* 15 Regulatory information

Other regulations in domestic and foreign countries

SARA (Superfund Amendments and Reauthorization Act)

Section 302/304 (extremely hazardous substances):

None of the ingredients is listed.

Section 313 Reportable Ingredients (Chemicals present below reporting threshold are exempt):

None of the ingredients is listed.

SARA Section 312/Tier I & II Hazard Categories: None

North America Chemical Inventory Status

TSCA (Toxic Substances Control Act - United States):

All ingredients are listed or exempt from listing unless otherwise noted below.

CEPA (Canadian DSL):

All ingredients are listed or exempt from listing unless otherwise noted below.

(Cont. on page 7)

USGHS

Safety Data Sheet

Printing date 01/27/2022

Version Number 1.0

Reviewed on 01/27/2022

Trade name: *Bituthene 8000 (NA) - Meter Wide*

(Cont. from page 6)

Right to Know Ingredient Disclosure:

Non Hazardous / Non Regulated Components

Non-hazardous ingredients

California Proposition 65: (Substances <0.1% unless noted in Section 3)**Chemicals known to cause cancer:**

Mineral oil, untreated and mildly treated

Polycyclic Aromatic Hydrocarbons

Chemicals known to cause reproductive toxicity for females:

None of the ingredients are listed.

Chemicals known to cause reproductive toxicity for males:

None of the ingredients are listed.

Chemicals known to cause developmental toxicity:

None of the ingredients are listed.

Carcinogenicity Categories**TLV-ACGIH (THE American Conference of Governmental Industrial Hygienists)****Human Carcinogen - A1 Confirmed, A2 Suspected, A3 Unknown Relevance, A4 Not Classifiable**

None of the ingredients are listed.

NIOSH-Cancer (National Institute for Occupational Safety and Health)

None of the ingredients are listed.

Volatile Organic Compounds (VOC) reported per the Emission Standards.

If no g/L value is provided this product is not subject to above standard.

*

16 Other information

The data included herein are presented in accordance with various environment, health and safety regulations. It is the responsibility of a recipient of the data to remain currently informed on chemical hazard information, to design and update its own program and to comply with all national, federal, state and local laws and regulations applicable to safety, occupational health, right-to-know and environmental protection.

Department issuing SDS:

GCP Applied Technologies

62 Whittemore Avenue

Cambridge, MA 02140 USA

USA: +1-617-876-1400 (24 hours)

+1-800-354-5414

Contact:**The first date of preparation** 01/27/2022**Number of revision times and the latest revision date** 1.0 / 01/27/2022

USGHS

1 Identification

Product identifier

Trade name: ***Bituthene Adhesive Primer B2 LVC***

SDS ID Number: 60028

Relevant identified uses of the substance or mixture, and uses advised against:
Specialty construction product. Not intended for other uses.

Details of the supplier of the safety data sheet

Manufacturer/Supplier:
GCP Applied Technologies
62 Whittemore Avenue
Cambridge, MA 02140 USA

GCP Canada, Inc.
294 Clements Road W.
Ajax, Ontario L1S 3C6 Canada

Information department:

Environmental Health & Safety
USA: +1-617-876-1400 (24 hours)
+1-800-354-5414 (8AM - 5PM) Not functional within Massachusetts
CAN: 1-905-683-8561 (24 hours)
Email address: msds.gcp@gcpat.com

Transport Emergency: Chemtrec +1-800-424-9300 (24 hours)

2 Hazard(s) identification

Classification of the substance or mixture

Flammable liquid and vapor.

Causes skin irritation.

May cause genetic defects.

May cause cancer.

Causes damage to organs through prolonged or repeated exposure. May cause damage to the central nervous system through prolonged or repeated exposure.

Label elements:

Hazard pictograms



GHS02

GHS07

GHS08

Danger

Hazard statements

Flammable liquid and vapor.

Causes skin irritation.

May cause genetic defects.

May cause cancer.

Causes damage to organs through prolonged or repeated exposure. May cause damage to the central nervous system through prolonged or repeated exposure.

Safety Data Sheet

Printing date 05/08/2018

Version Number 1.0

Reviewed on 05/08/2018

Trade name: *Bituthene Adhesive Primer B2 LVC*

(Cont. from page 1)

Precautionary statements

Keep away from heat/sparks/open flames/hot surfaces. - No smoking.

Keep container tightly closed.

Ground/bond container and receiving equipment.

Take precautionary measures against static discharge.

Wear protective gloves/protective clothing/eye protection/face protection.

If on skin (or hair): Take off immediately all contaminated clothing. Rinse skin with water/shower.

If exposed or concerned: Get medical advice/attention.

Take off contaminated clothing and wash it before reuse.

If skin irritation occurs: Get medical advice/attention.

Store in a well-ventilated place. Keep cool.

Hazard description: Flammable**NFPA ratings (scale 0 - 4)**

Health = 2

Fire = 3

Reactivity = 0

HMIS-ratings (scale 0 - 4)

Health = *3

Flammability = 3

Reactivity = 0

Other hazards**Results of PBT and vPvB assessment****PBT:** Not applicable.**vPvB:** Not applicable.**3 Composition/information on ingredients****Chemical characterization: Mixture****Description:** Mixture of the hazardous substance(s) listed below with additional nonhazardous ingredients.**Hazardous components:**

68478-07-9	Hydrocarbon Resin	30-50%
95-47-6	Xylene (o)	10-20%
8052-41-3	Stoddard solvent	2.0-5.0%
63449-39-8	Paraffin waxes and hydrocarbon waxes	1.0-2.0%
8052-42-4	Asphalt	1.0-2.0%
100-41-4	Ethylbenzene	0.1-1.0%

Additional information: Non-hazardous ingredients may be listed in Section 15; Right-To-Know disclosure.**4 First-aid measures****Description of first aid measures****General information:** Get medical advice/attention if you feel unwell.**After inhalation:**

Supply fresh air. If required, provide artificial respiration. Keep patient warm. Consult doctor if symptoms persist.

After skin contact:

Immediately wash contaminated skin with soap or mild detergent and water. If this chemical soaks clothing, immediately remove clothing and wash skin.

After eye contact: Rinse cautiously with water for several minutes.

(Cont. on page 3)

USGHS

Safety Data Sheet

Printing date 05/08/2018

Version Number 1.0

Reviewed on 05/08/2018

Trade name: *Bituthene Adhesive Primer B2 LVC*

(Cont. from page 2)

After swallowing:

Rinse mouth.

Do NOT induce vomiting.

Information for doctor:**Most important symptoms and effects, both acute and delayed** No further relevant information available.**Indication of any immediate medical attention and special treatment needed** No further relevant information available.**5 Fire-fighting measures****Extinguishing media****Suitable extinguishing agents:** CO₂, sand,extinguishing powder. Do not use water.**Special hazards arising from the substance or mixture** No further relevant information available.**Additional information** Collect contaminated fire fighting water separately. It must not enter the sewage system.**6 Accidental release measures****Personal precautions, protective equipment and emergency procedures**

Wear protective equipment. Keep unprotected persons away.

Methods and material for containment and cleaning up:

Contain and/or absorb spill with inert material (i.e. sand, vermiculite) then place in a suitable container.

Sweep up spilled product into receptacles.

Dispose contaminated material as waste according to section 13 of the SDS.

Reference to other sections

See Section 7 for information on safe handling.

See Section 8 for information on personal protection equipment.

See Section 13 for disposal information.

7 Handling and storage**Handling:****Precautions for safe handling**

Avoid contact with skin.

Prevent formation of aerosols.

Flammable mixtures with air can be formed in emptied containers. Do not puncture, cut, drill, heat or weld uncleaned drums.

Information about protection against explosions and fires:

Keep ignition sources away - Do not smoke.

Use only in explosion protected area.

Protect against electrostatic charges.

Use explosion-proof apparatus / fittings and spark-proof tools.

(Cont. on page 4)

USGHS

Safety Data Sheet

Printing date 05/08/2018

Version Number 1.0

Reviewed on 05/08/2018

Trade name: *Bituthene Adhesive Primer B2 LVC*

(Cont. from page 3)

Empty containers may retain hazardous residue, both liquid and vapor.

Conditions for safe storage, including any incompatibilities**Storage:****Information about storage in one common storage facility:** Use only in explosion protected area.**Further information about storage conditions:** Keep receptacle tightly sealed.**Specific end use(s)** No further relevant information available.**8 Exposure controls/personal protection****Additional information about design of technical systems:** No further data; see item 7.**Control parameters****Components with limit values that require monitoring at the workplace:****95-47-6 Xylene (o)**

PEL (USA)	Long-term value: 435 mg/m ³ , 100 ppm
REL (USA)	Short-term value: 655 mg/m ³ , 150 ppm
	Long-term value: 435 mg/m ³ , 100 ppm
TLV (USA)	Short-term value: 651 mg/m ³ , 150 ppm
	Long-term value: 434 mg/m ³ , 100 ppm
	BEI

8052-41-3 Stoddard solvent

PEL (USA)	Long-term value: 2900 mg/m ³ , 500 ppm
REL (USA)	Long-term value: 350 mg/m ³
	Ceiling limit value: 1800* mg/m ³
	*15-min
TLV (USA)	Long-term value: 525 mg/m ³ , 100 ppm

8052-42-4 Asphalt

REL (USA)	Ceiling limit value: 5* mg/m ³
	*15-min; See Pocket Guide App. A
TLV (USA)	Long-term value: 0.5* mg/m ³
	*inh. fraction; as benzene-soluble aerosol; BEIp

Ingredients with biological limit values:**95-47-6 Xylene (o)**

BEI (USA)	1.5 g/g creatinine
	Medium: urine
	Time: end of shift
	Parameter: Methylhippuric acids

8052-42-4 Asphalt

BEI (USA)	-
	Medium: urine
	Time: end of shift at end of workweek
	Parameter: 1-Hydroxypyrene with hydrolysis (nonquantitative)

Additional information: The lists that were valid during the creation were used as basis.**Exposure controls****Personal protective equipment:****General protective and hygienic measures:** The usual precautionary measures for handling chemicals should be followed.**Breathing equipment:**

Control exposure to ingredients with workplace control parameters if mentioned above. If no ingredients are listed, respiratory protection is generally not required.

If exposure limits are listed and may be exceeded, use approved respiratory protective equipment and filter type appropriate for the listed ingredients. (NIOSH, CEN, etc.).

(Cont. on page 5)

USGHS

Safety Data Sheet

Printing date 05/08/2018

Version Number 1.0

Reviewed on 05/08/2018

Trade name: *Bituthene Adhesive Primer B2 LVC*

(Cont. from page 4)

A chemical cartridge respirator with organic vapor cartridge is required if occupational exposure limits are exceeded. A dust/mist cartridge or prefilter may be needed in addition to control exposure to mist. Supplied air respirator (SCBA) is required at exposure levels above the capabilities of a chemical cartridge respirator.

Protection of hands: Gloves should be worn to prevent skin contact and should be impermeable and resistant to the product.

Material of gloves Gloves should be worn to prevent skin contact and should be impermeable and resistant to the product.

Eye protection:

Safety glasses with side shield protection.

Safety glasses with side shields should be worn to prevent contact due to splashing. Under high vapor mist concentrations, tightly sealed goggles should be worn.



A face shield should also be worn if there is potential exposure to splash or spray.

Body protection:

Use personal protective equipment as required.

Take off contaminated clothing.

9 Physical and chemical properties

Information on basic physical and chemical properties**General Information****Appearance:**

Form:	Liquid
Color:	According to product specification
Odor:	Characteristic
Odor threshold:	Not determined.

pH-value (~):	Not determined.
----------------------	-----------------

Change in condition

Melting point/Melting range:	Undetermined.
Boiling point/Boiling range:	161 °C (321.8 °F)
Flash point:	27 °C (80.6 °F)

Flammability (solid, gaseous):	Not applicable.
---------------------------------------	-----------------

Ignition temperature:	465 °C (869 °F)
------------------------------	-----------------

Decomposition temperature:	Not determined.
Auto igniting:	Product is not self-igniting.
Danger of explosion:	In use, may form flammable/explosive vapor-air mixture.

Explosion limits:	
Lower:	1.7 Vol %
Upper:	7.6 Vol %
VOC Content (max):	Not determined.

Vapor pressure at 20 °C (68 °F):	7 hPa (5.3 mm Hg)
Density: (~) at 20 °C (68 °F)	1 g/cm ³ (8.3 lbs/gal)
Relative density	Not determined.
Vapor density	Not determined.
Evaporation rate	Not determined.

Solubility in / Miscibility with	
Water:	Not miscible or difficult to mix.

(Cont. on page 6)

USGHS

Safety Data Sheet

Printing date 05/08/2018

Version Number 1.0

Reviewed on 05/08/2018

Trade name: *Bituthene Adhesive Primer B2 LVC*

(Cont. from page 5)

Partition coefficient (n-octanol/water): Not determined.

Viscosity:**Dynamic:**

Not determined.

Kinematic:

Not determined.

Molecular weight

Not applicable.

Other information

No further relevant information available.

10 Stability and reactivity**Reactivity** Stable under normal conditions.**Chemical stability****Thermal decomposition:** No decomposition if used according to specifications.**Possibility of hazardous reactions** No dangerous reactions known.**Conditions to avoid** No further relevant information available.**Incompatible materials:** No further relevant information available.**Hazardous decomposition products:**

Carbon monoxide and carbon dioxide

Other potentially hazardous products may also be formed.

Additional information: See section 7 for information on handling, storage and conditions to be avoided.**11 Toxicological information****Information on toxicological effects****Acute toxicity:****Primary irritant effect:****on the skin:** Causes skin irritation.**on the eye:** No irritating effect expected**inhalation:** No irritating effect expected**Additional toxicological information:**

The product can cause inheritable damage.

Over exposure by inhalation or ingestion may be fatal. Chemicals contained in this product can affect the skin, heart, brain, liver, kidneys, lungs and spleen. Some harmful effects are also possible through skin absorption.

Carcinogenic categories**IARC (International Agency for Research on Cancer) Human Carcinogenicity:**
Group 1- Positive, Group 2A- Probable, Group 2B- Possible, Group 3- Not Classifiable

95-47-6	Xylene (o)	3
8052-42-4	Asphalt	2B
100-41-4	Ethylbenzene	2B

NTP (National Toxicology Program)**K–Known to be carcinogenic, R–May reasonably be anticipated to be carcinogenic**

None of the ingredients is listed.

OSHA-Ca (Occupational Safety & Health Administration)

None of the ingredients is listed.

USGHS

(Cont. on page 7)

Safety Data Sheet

Printing date 05/08/2018

Version Number 1.0

Reviewed on 05/08/2018

Trade name: *Bituthene Adhesive Primer B2 LVC*

(Cont. from page 6)

12 Ecological information

Toxicity**Aquatic toxicity:** No further relevant information available.**Persistence and degradability** No further relevant information available.**Behavior in environmental systems:****Bioaccumulative potential** No further relevant information available.**Mobility in soil** No further relevant information available.**Additional ecological information:****General notes:**

Do not allow product to reach ground water, water course or sewage system, even in small quantities.

Danger to drinking water if even extremely small quantities leak into the ground.

Results of PBT and vPvB assessment**PBT:** Not applicable.**vPvB:** Not applicable.**Other adverse effects** No further relevant information available.

* 13 Disposal considerations

Disposal methods:

Consult all regulations (federal, state, provincial, local) or a qualified waste disposal firm when characterizing product for disposal. Dispose of waste in accordance with all applicable regulations.

Recommendation:

Must not be disposed of together with household garbage. Do not allow product to reach sewage system.

Uncleaned packagings:**Recommendation:** Dispose of contents/container in accordance with local/regional/national/international regulations.

* 14 Transport information

UN-Number

DOT, IMDG, IATA UN3295

UN proper shipping nameDOT Hydrocarbons, liquid, n.o.s.
IMDG, IATA HYDROCARBONS, LIQUID, N.O.S.**Transport hazard class(es)**

DOT



Class

3 Flammable liquids

(Cont. on page 8)

USGHS

Safety Data Sheet

Printing date 05/08/2018

Version Number 1.0

Reviewed on 05/08/2018

Trade name: *Bituthene Adhesive Primer B2 LVC*

(Cont. from page 7)

Label 3

IMDG, IATA



Class 3 Flammable liquids
Label 3

Packing group
DOT, IMDG, IATA III

Environmental hazards:
Marine pollutant: No

Special precautions for user Warning: Flammable liquids
Danger code (Kemler): 30
EMS Number: F-E,S-D
Stowage Category A

Transport/Additional information:

IMDG
Limited quantities (LQ) 5L
Excepted quantities (EQ) Code: E1
Maximum net quantity per inner packaging: 30 ml
Maximum net quantity per outer packaging: 1000 ml

UN "Model Regulation": UN 3295 HYDROCARBONS, LIQUID, N.O.S., 3, III

15 Regulatory information

SARA (Superfund Amendments and Reauthorization Act)

Section 302/304 (extremely hazardous substances):

None of the ingredients is listed.

Section 313 Reportable Ingredients (Chemicals present below reporting threshold are exempt):

95-47-6 Xylene (o)	14.5%
--------------------	-------

SARA Section 312/Tier I & II Hazard Categories:

Physical Hazard - Flammable (gases, aerosols, liquids, or solids)
Health Hazard - Carcinogenicity
Health Hazard - Skin Corrosion or Irritation
Health Hazard - Specific target organ toxicity (single or repeated exposure)
Health Hazard - Germ cell mutagenicity

North America Chemical Inventory Status

TSCA (Toxic Substances Control Act - United States):

All ingredients are listed or exempt from listing unless otherwise noted below.

CEPA (Canadian DSL):

All ingredients are listed or exempt from listing unless otherwise noted below.

Right to Know Ingredient Disclosure:

616-38-6 dimethyl carbonate

California Proposition 65: (Substances <0.1% unless noted in Section 3)

Chemicals known to cause cancer:

Ethylbenzene

Chemicals known to cause reproductive toxicity for females:

None of the ingredients is listed.

(Cont. on page 9)

USGHS

Safety Data Sheet

Printing date 05/08/2018

Version Number 1.0

Reviewed on 05/08/2018

Trade name: *Bituthene Adhesive Primer B2 LVC*

(Cont. from page 8)

Chemicals known to cause reproductive toxicity for males:

None of the ingredients is listed.

Chemicals known to cause developmental toxicity:

None of the ingredients is listed.

Carcinogenicity Categories**TLV-ACGIH (THE American Conference of Governmental Industrial Hygienists)**
Human Carcinogen - A1 Confirmed, A2 Suspected, A3 Unknown Relevance, A4 Not Classifiable

Xylene (o)

A4

Asphalt

A4

NIOSH-Cancer (National Institute for Occupational Safety and Health)

8052-42-4 | Asphalt

Volatile Organic Compounds (VOC) reported per the Emission Standards. 192 grams/liter**16 Other information**

The data included herein are presented in accordance with various environment, health and safety regulations. It is the responsibility of a recipient of the data to remain currently informed on chemical hazard information, to design and update its own program and to comply with all national, federal, state and local laws and regulations applicable to safety, occupational health, right-to-know and environmental protection.

Department issuing SDS:

GCP Applied Technologies

62 Whittemore Avenue

Cambridge, MA 02140 USA

USA: +1-617-876-1400 (24 hours)

+1-800-354-5414

Date of preparation / last revision 05/08/2018 / -**The first date of preparation** 03/04/2015**Number of revision times and the latest revision date** 1.0 / 05/08/2018

USGHS

1 Identification

Product identifier

Trade name: ***Hydroduct® Waterproofing Products***

SDS ID Number:
2902

Additional Information: Full product name listing available in Section 16.

Relevant identified uses of the substance or mixture, and uses advised against:

Waterproofing.
Specialty construction product. Not intended for other uses.

Details of the supplier of the safety data sheet

Manufacturer/Supplier:
GCP Applied Technologies
62 Whittemore Avenue
Cambridge, MA 02140 USA

GCP Canada, Inc.
294 Clements Road W.
Ajax, Ontario L1S 3C6 Canada

Information department:

Environmental Health & Safety
USA: +1-617-876-1400 (24 hours)
+1-800-354-5414 (8AM - 5PM) Not functional within Massachusetts
CAN: 1-905-683-8561 (24 hours)
Email address: msds.gcp@gcpat.com

Transport Emergency: Chemtrec +1-800-424-9300 (24 hours)

2 Hazard(s) identification

Classification of the substance or mixture

The product is not classified, according to the Globally Harmonized System (GHS).

Additional information:

SDS's are not required for finished articles. nevertheless, the following information is provided to assist with safe use.

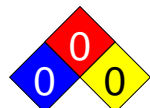
Label elements:

Hazard pictograms Not applicable.

Not applicable.

Hazard statements Not applicable.

NFPA ratings (scale 0 - 4)



Health = 0
Fire = 0
Reactivity = 0

HMIS-ratings (scale 0 - 4)



Health = 0
Flammability = 0
Reactivity = 0

Safety Data Sheet

Printing date 04/13/2018

Version Number 1.0

Reviewed on 04/13/2018

Trade name: *Hydroduct® Waterproofing Products*

(Cont. from page 1)

Other hazards**Results of PBT and vPvB assessment****PBT:** Not applicable.**vPvB:** Not applicable.**3 Composition/information on ingredients****Chemical characterization: Mixture****Hazardous components:** Not applicable.**Additional information:** Non-hazardous ingredients may be listed in Section 15; Right-To-Know disclosure.**4 First-aid measures****Description of first aid measures****General information:** Get medical advice/attention if you feel unwell.**After inhalation:** No special measures required.**After skin contact:** Due to the physical nature of this product adverse effects are not likely.**After eye contact:**

Rinse cautiously with water for several minutes.

If symptoms persist, consult a physician.

After swallowing: Due to physical nature of this product, ingestion is not likely.**Information for doctor:****Most important symptoms and effects, both acute and delayed** No further relevant information available.**Indication of any immediate medical attention and special treatment needed** No further relevant information available.**5 Fire-fighting measures****Special hazards arising from the substance or mixture** No further relevant information available.**Advice for firefighters****Protective equipment:** Wear personal protective equipment.**Additional information** Collect contaminated fire fighting water separately. It must not enter the sewage system.**6 Accidental release measures****Personal precautions, protective equipment and emergency procedures**

Wear protective equipment. Keep unprotected persons away.

Methods and material for containment and cleaning up: No special measures required.**Reference to other sections**

See Section 7 for information on safe handling.

See Section 8 for information on personal protection equipment.

See Section 13 for disposal information.

USGHS

(Cont. on page 3)

Safety Data Sheet

Printing date 04/13/2018

Version Number 1.0

Reviewed on 04/13/2018

Trade name: **Hydroduct® Waterproofing Products**

(Cont. from page 2)

* **7 Handling and storage****Handling:****Precautions for safe handling** For professional use only. Keep out of children's reach.**Conditions for safe storage, including any incompatibilities****Storage:****Information about storage in one common storage facility:** No special measures required.**Further information about storage conditions:** Protect from heat and direct sunlight.**Specific end use(s)** No further relevant information available.* **8 Exposure controls/personal protection****Additional information about design of technical systems:** No further data; see item 7.**Control parameters****Components with limit values that require monitoring at the workplace:**

The product does not contain any relevant quantities of materials with critical values that have to be monitored at the workplace.

Additional information: The lists that were valid during the creation were used as basis.**Exposure controls****Personal protective equipment:****General protective and hygienic measures:** Use good personal hygiene practices.**Breathing equipment:**

Control exposure to ingredients with workplace control parameters if mentioned above. If no ingredients are listed, respiratory protection is generally not required.

If exposure limits are listed and may be exceeded, use approved respiratory protective equipment and filter type appropriate for the listed ingredients. (NIOSH, CEN, etc.).

Protection of hands: No chemical-protective gloves required.**Eye protection:**

Safety glasses with side shield protection.

Body protection: Use personal protective equipment as required.* **9 Physical and chemical properties****Information on basic physical and chemical properties****General Information****Appearance:**

Form:	Solid
Color:	According to product specification
Odor:	Characteristic
Odor threshold:	Not determined.

pH-value (~): Not applicable.**Change in condition**

Melting point/Melting range:	Undetermined.
Boiling point/Boiling range:	Undetermined.

(Cont. on page 4)

USGHS

Safety Data Sheet

Printing date 04/13/2018

Version Number 1.0

Reviewed on 04/13/2018

Trade name: **Hydroduct® Waterproofing Products**

(Cont. from page 3)

Flash point:	Not applicable.
Flammability (solid, gaseous):	Not determined.
Ignition temperature:	Undetermined.
Decomposition temperature:	Not determined.
Auto igniting:	Not determined.
Danger of explosion:	Product does not present an explosion hazard.
Explosion limits:	
Lower:	Not determined.
Upper:	Not determined.
VOC Content (max):	Not determined.
Vapor pressure:	Not applicable.
Density: (~) at 20 °C (68 °F)	1 g/cm ³ (8.3 lbs/gal)
Relative density	Not determined.
Vapor density	Not determined.
Solubility in / Miscibility with Water:	Not miscible or difficult to mix.
Partition coefficient (n-octanol/water):	Not determined.
Viscosity:	
Dynamic:	Not applicable.
Kinematic:	Not applicable.
Molecular weight	Not applicable.
Other information	No further relevant information available.

*

10 Stability and reactivity**Reactivity** Stable under normal conditions.**Chemical stability****Thermal decomposition:** No decomposition if used according to specifications.**Possibility of hazardous reactions** No dangerous reactions known.**Conditions to avoid** No further relevant information available.**Incompatible materials:** No further relevant information available.**Hazardous decomposition products:** Carbon monoxide and carbon dioxide

*

11 Toxicological information**Information on toxicological effects****Acute toxicity:****Primary irritant effect:****on the skin:** No irritating effect expected**on the eye:** No irritating effect expected**inhalation:** No irritating effect expected

(Cont. on page 5)

USGHS

Safety Data Sheet

Printing date 04/13/2018

Version Number 1.0

Reviewed on 04/13/2018

Trade name: **Hydroduct® Waterproofing Products**

(Cont. from page 4)

Additional toxicological information:**Carcinogenic categories****IARC (International Agency for Research on Cancer) Human Carcinogenicity:**
Group 1- Positive, Group 2A- Probable, Group 2B- Possible, Group 3- Not Classifiable

None of the ingredients is listed.

NTP (National Toxicology Program)**K–Known to be carcinogenic, R–May reasonably be anticipated to be carcinogenic**

None of the ingredients is listed.

OSHA-Ca (Occupational Safety & Health Administration)

None of the ingredients is listed.

12 Ecological information**Toxicity****Aquatic toxicity:** No further relevant information available.**Persistence and degradability** No further relevant information available.**Behavior in environmental systems:****Bioaccumulative potential** No further relevant information available.**Mobility in soil** No further relevant information available.**Additional ecological information:****General notes:** Not known to be hazardous to water.**Results of PBT and vPvB assessment****PBT:** Not applicable.**vPvB:** Not applicable.**Other adverse effects** No further relevant information available.**13 Disposal considerations****Disposal methods:**

Consult all regulations (federal, state, provincial, local) or a qualified waste disposal firm when characterizing product for disposal. Dispose of waste in accordance with all applicable regulations.

Recommendation:

Must not be disposed of together with household garbage. Do not allow product to reach sewage system.

Uncleaned packagings:**Recommendation:** Dispose of contents/container in accordance with local/regional/national/international regulations.**14 Transport information****UN-Number****DOT, IMDG, IATA**

Not applicable.

(Cont. on page 6)

USGHS

Safety Data Sheet

Printing date 04/13/2018

Version Number 1.0

Reviewed on 04/13/2018

Trade name: **Hydroduct® Waterproofing Products**

(Cont. from page 5)

UN proper shipping name

DOT, IMDG, IATA

Not applicable.

Transport hazard class(es)

DOT, IMDG, IATA

Class

Not applicable.

Packing group

DOT, IMDG, IATA

Not applicable.

Environmental hazards:

Marine pollutant:

No

Special precautions for user

Not applicable.

Transport/Additional information: Not classified as a dangerous good for transport by road, rail or air.

DOT

Remarks:

Not Regulated.

UN "Model Regulation":

Not applicable.

*

15 Regulatory information**SARA (Superfund Amendments and Reauthorization Act)****Section 302/304 (extremely hazardous substances):**

None of the ingredients is listed.

Section 313 Reportable Ingredients (Chemicals present below reporting threshold are exempt):

None of the ingredients is listed.

SARA Section 312/Tier I & II Hazard Categories: None**North America Chemical Inventory Status****TSCA (Toxic Substances Control Act - United States):**

All ingredients are listed or exempt from listing unless otherwise noted below.

CEPA (Canadian DSL):

All ingredients are listed or exempt from listing unless otherwise noted below.

California Proposition 65: (Substances <0.1% unless noted in Section 3)**Chemicals known to cause cancer:**

None of the ingredients is listed.

Chemicals known to cause reproductive toxicity for females:

None of the ingredients is listed.

Chemicals known to cause reproductive toxicity for males:

None of the ingredients is listed.

Chemicals known to cause developmental toxicity:

None of the ingredients is listed.

Carcinogenicity Categories**TLV-ACGIH (THE American Conference of Governmental Industrial Hygienists)****Human Carcinogen - A1 Confirmed, A2 Suspected, A3 Unknown Relevance, A4 Not Classifiable**

None of the ingredients is listed.

NIOSH-Cancer (National Institute for Occupational Safety and Health)

None of the ingredients is listed.

Volatile Organic Compounds (VOC) reported per the Emission Standards.

If no g/L value is provided this product is not subject to above standard.

USGHS

(Cont. on page 7)

Safety Data Sheet

Printing date 04/13/2018

Version Number 1.0

Reviewed on 04/13/2018

Trade name: *Hydroduct® Waterproofing Products*

(Cont. from page 6)

16 Other information

The data included herein are presented in accordance with various environment, health and safety regulations. It is the responsibility of a recipient of the data to remain currently informed on chemical hazard information, to design and update its own program and to comply with all national, federal, state and local laws and regulations applicable to safety, occupational health, right-to-know and environmental protection.

This SDS is for the following products: Hydroduct® 220, Hydroduct® 225, Hydroduct® 500, Hydroduct® 500 RS, Hydroduct® 550, Hydroduct® 550 RS, Hydroduct® 600, Hydroduct® 600 coil, Hydroduct® 660.

Department issuing SDS:

GCP Applied Technologies

62 Whittemore Avenue

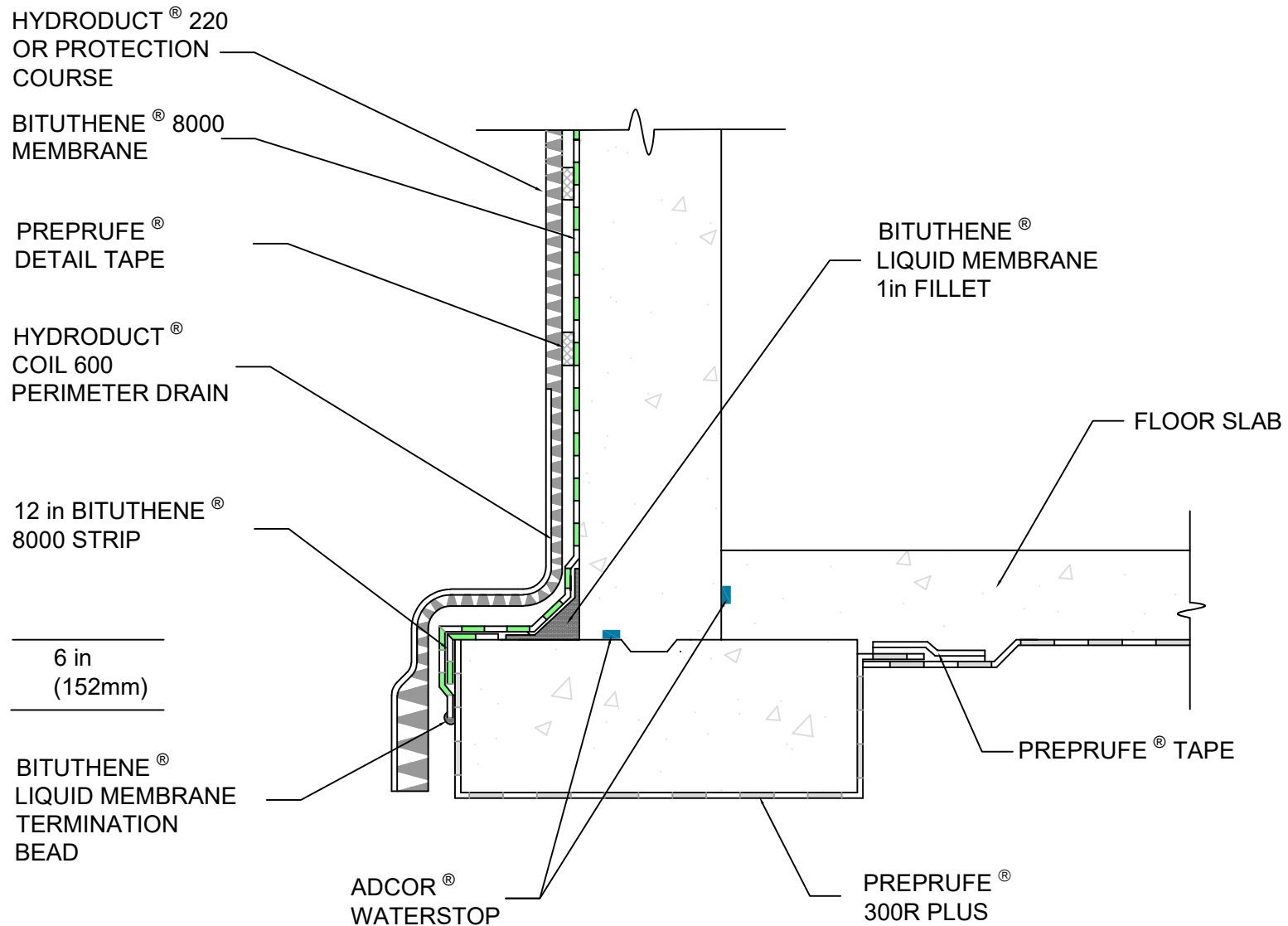
Cambridge, MA 02140 USA

USA: +1-617-876-1400 (24 hours)

+1-800-354-5414

Date of preparation / last revision 04/13/2018 / -**The first date of preparation** 04/13/2018**Number of revision times and the latest revision date** 1.0 / 04/13/2018

USGHS



NOTE: GCP MAY REQUIRE AN ALTERNATE GCP WATERSTOP BASED ON DESIGN CONDITIONS



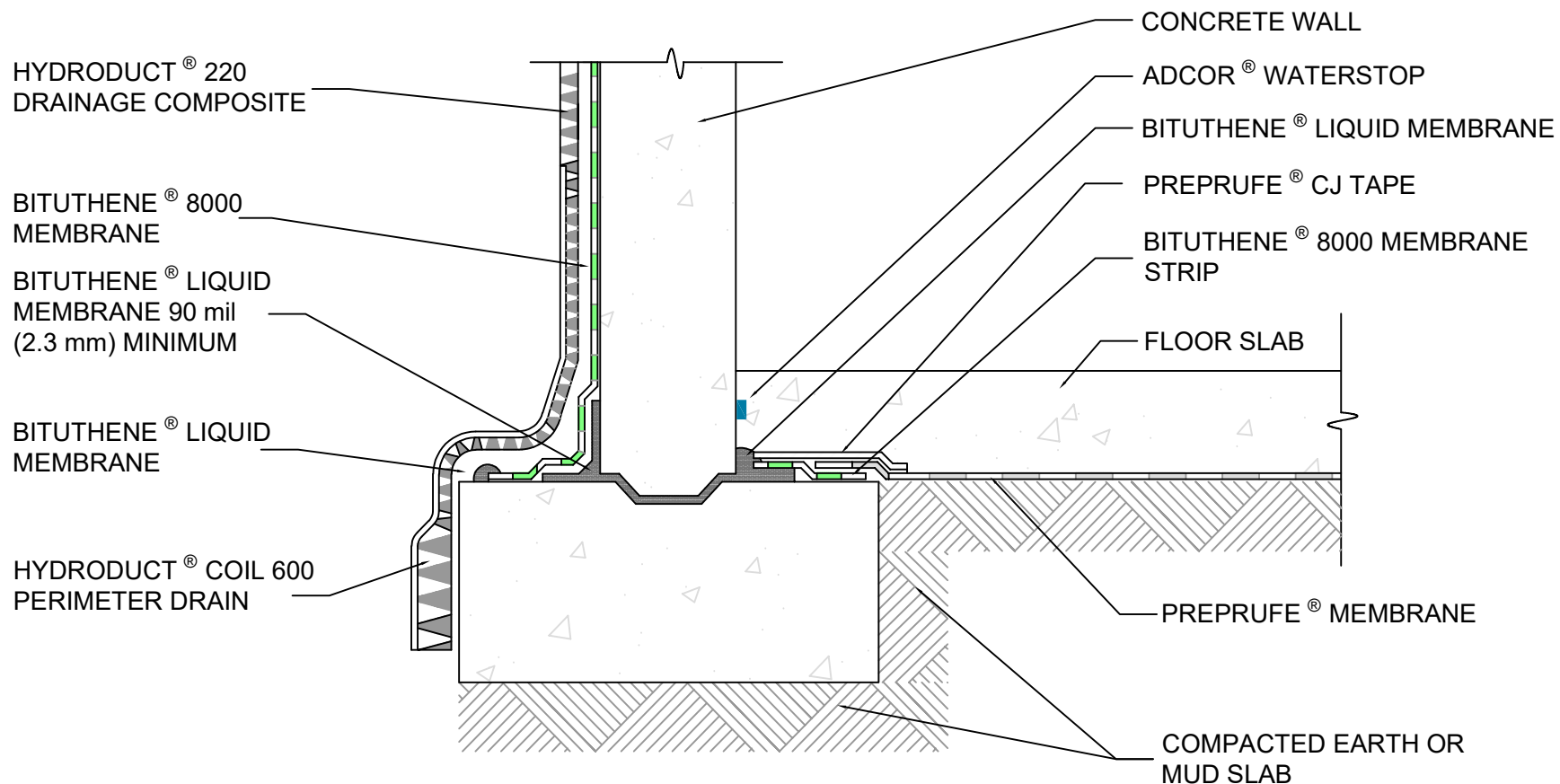
FOUNDATION WALL FLOOR SLAB AT FOOTING LEVEL (OPTION - 2) BITUTHENE® 8000 WATERPROOFING SYSTEM

DRAWING: BIT 8K-002

SCALE: Not to scale

EFFECTIVE DATE: 01/15/2022

SUPERCEDES: N/A



- NOTES:
- THE FOOTING KEYWAY SHOULD BE FORMED TO CREATE A REGULAR AND UNIFORM SHAPE ALLOWING PROPER DETAILING OF THE BITUTHENE LIQUID MEMBRANE.
 - GCP MAY REQUIRE AN ALTERNATE GCP WATERSTOP BASED ON DESIGN CONDITIONS



FOUNDATION WALL FLOOR SLAB AT FOOTING LEVEL (OPTION - 4) BITUTHENE® WATERPROOFING SYSTEM

DRAWING: BIT-8K-004

SCALE: Not to scale

EFFECTIVE DATE: 01/16/2022

SUPERCEDES: N/A

HYDRODUCT® 220 OR
PROTECTION COURSE

BITUTHENE® 8000
MEMBRANE

BITUTHENE® MASTIC
OR BITUTHENE®
LIQUID MEMBRANE

HYDRODUCT® COIL 600
PERIMETER DRAIN

ADCOR®
WATERSTOP

PREPRUFE® WALL TERMINATION
DETAIL PRE039 OR PRE040

ELEVATED FLOOR SLAB

MIN 6 in
(150 mm)

PREPRUFE® 300R PLUS
MEMBRANE

GROUT SOLID

NOTES:

- INTENDED FOR PROJECTS WITH PERMANENT DEWATERING OR NON-HYDROSTATIC CONDITIONS
- GCP MAY REQUIRE AN ALTERNATE GCP WATERSTOP BASED ON DESIGN CONDITIONS



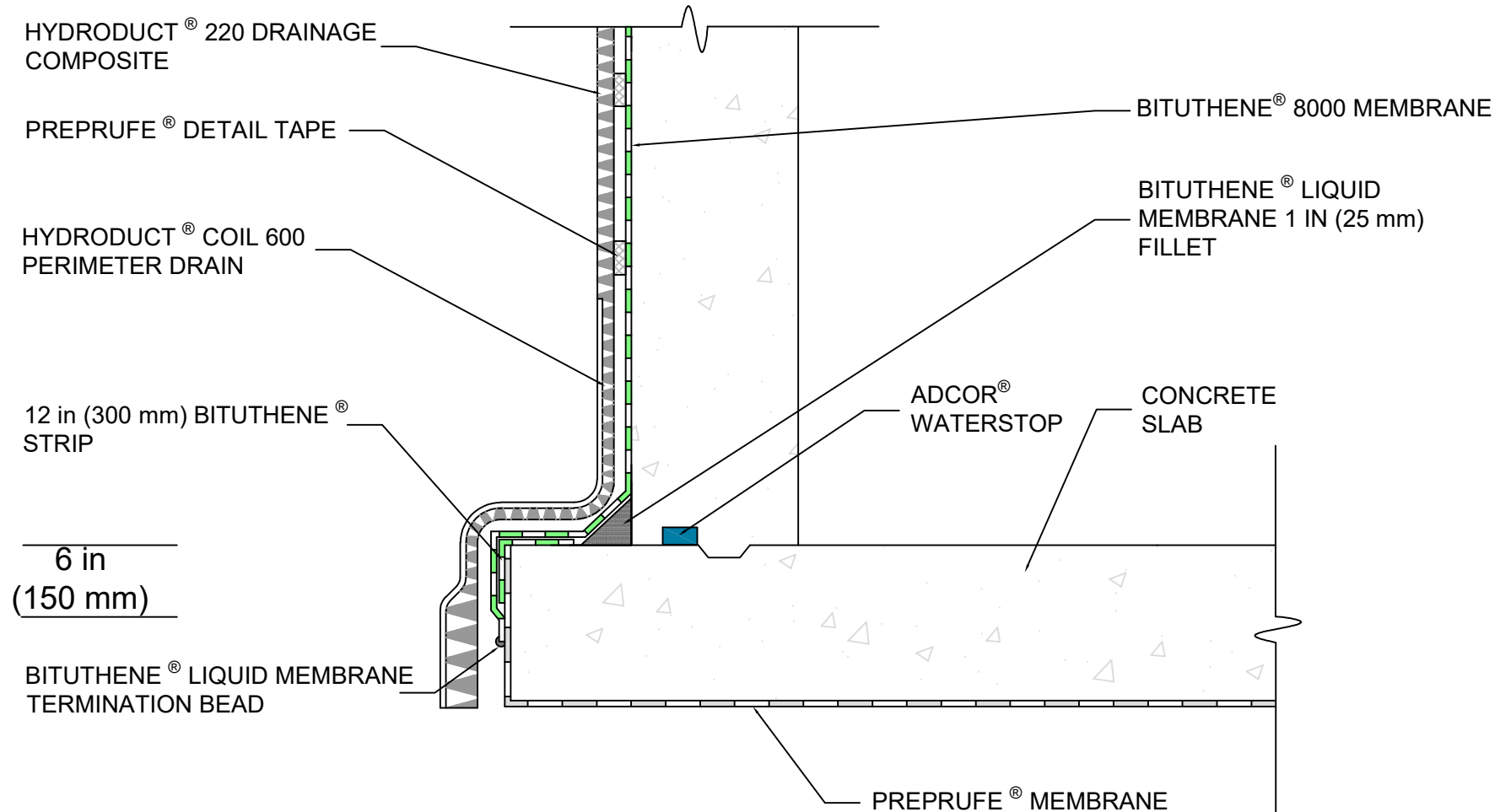
FOUNDATION WALL ELEVATED FLOOR SLAB (OPTION - 2) BITUTHENE® WATERPROOFING SYSTEM

DRAWING: BIT-006

SCALE: Not to scale

EFFECTIVE DATE: 01/16/2021

SUPERCEDES: N/A



NOTE - GCP MAY REQUIRE AN ALTERNATE GCP WATERSTOP BASED ON DESIGN CONDITIONS



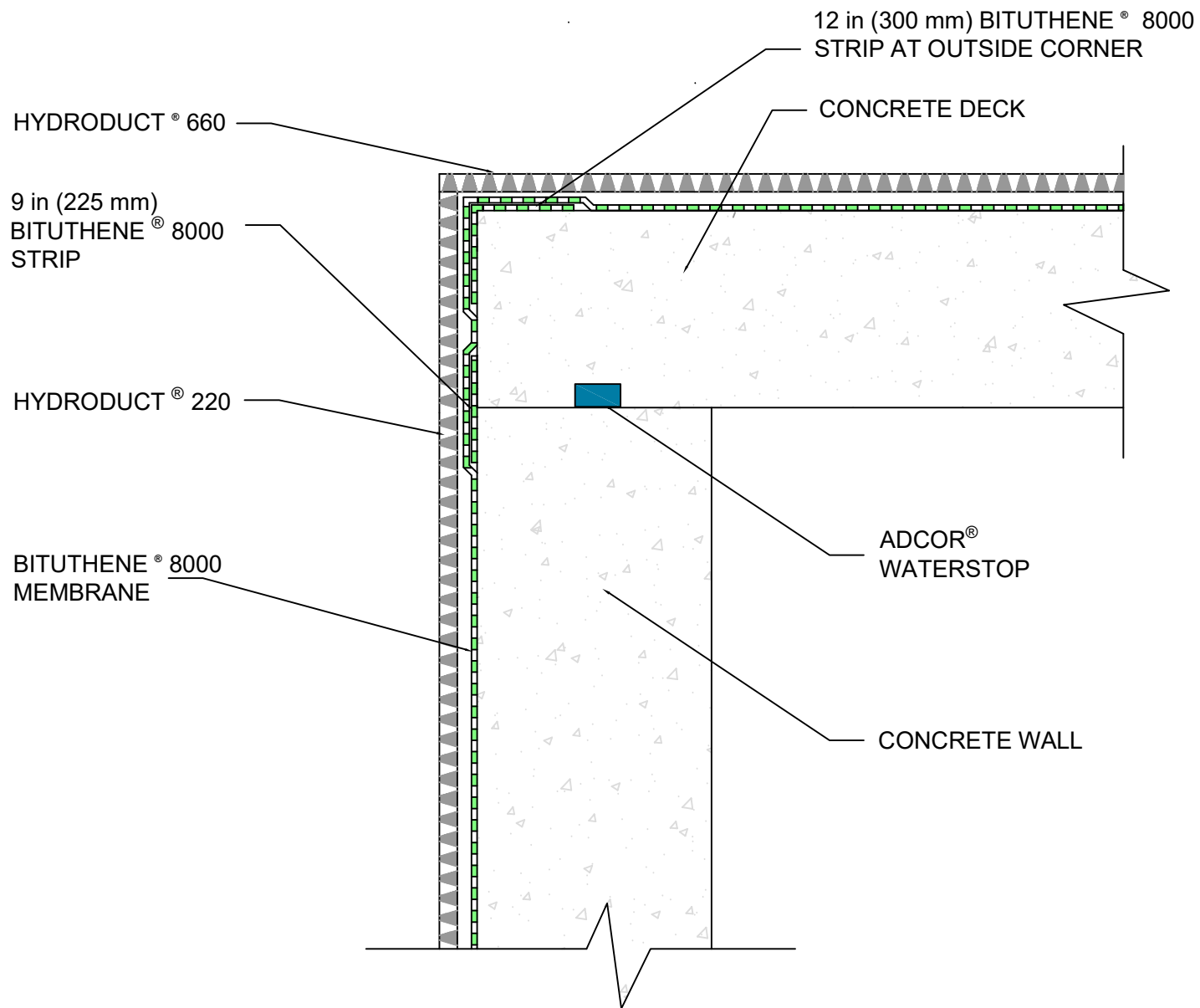
FOUNDATION WALL STRUCTURAL SLAB - OPTION 2 BITUTHENE® WATERPROOFING SYSTEM

DRAWING: BIT-8K-008-A

SCALE: Not to scale

EFFECTIVE DATE: 01/24/2022

SUPERCEDES: N/A



NOTE - GCP MAY REQUIRE AN ALTERNATE GCP WATERSTOP BASED ON DESIGN CONDITIONS



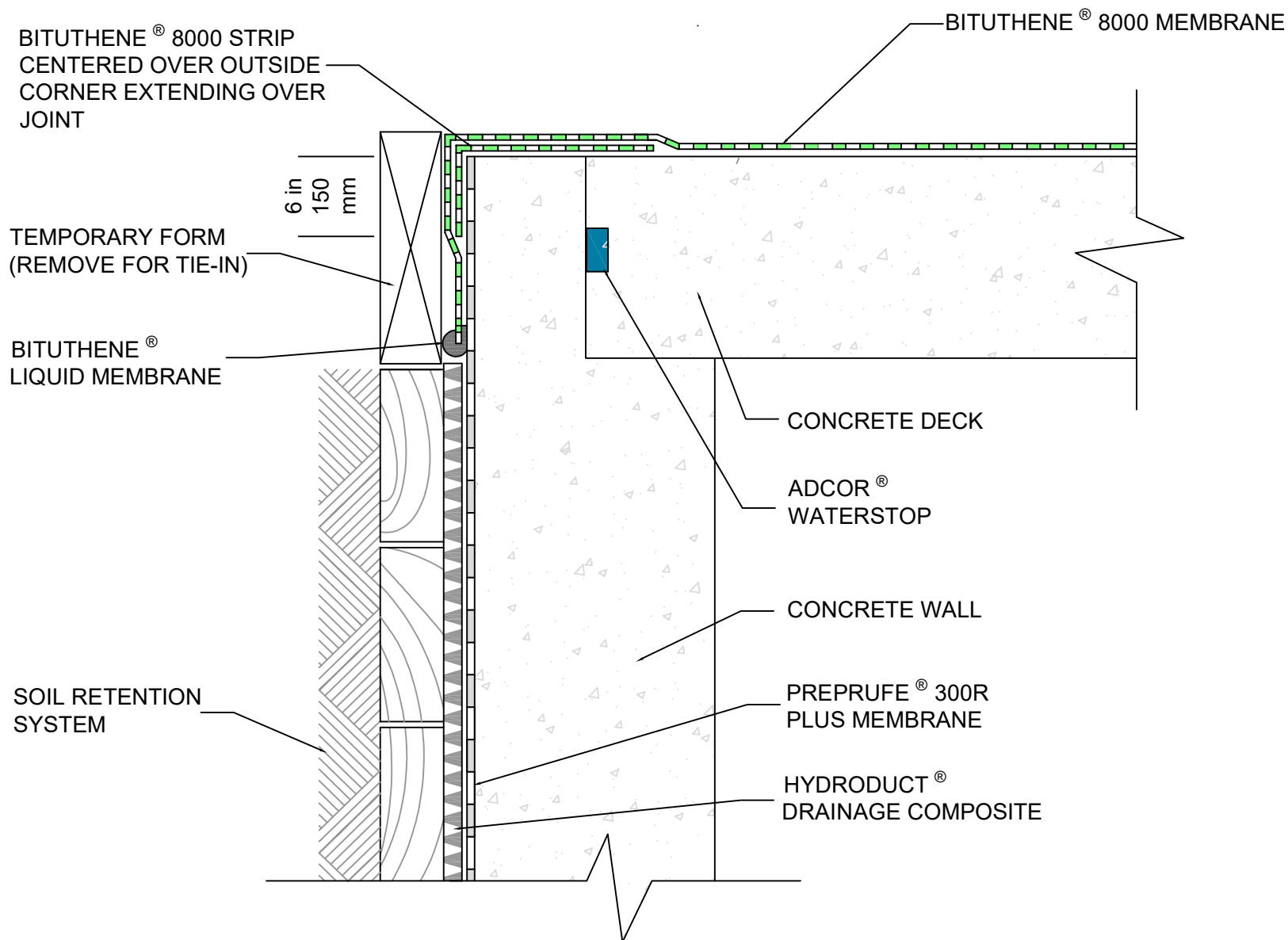
PLAZA DECK TO WALL TIE IN BITUTHENE® WATERPROOFING SYSTEM

DRAWING: BIT-8K-012

SCALE: Not to scale

EFFECTIVE DATE: 01/17/2022

SUPERCEDES: N/A



NOTE - GCP MAY REQUIRE AN ALTERNATE GCP WATERSTOP BASED ON DESIGN CONDITIONS



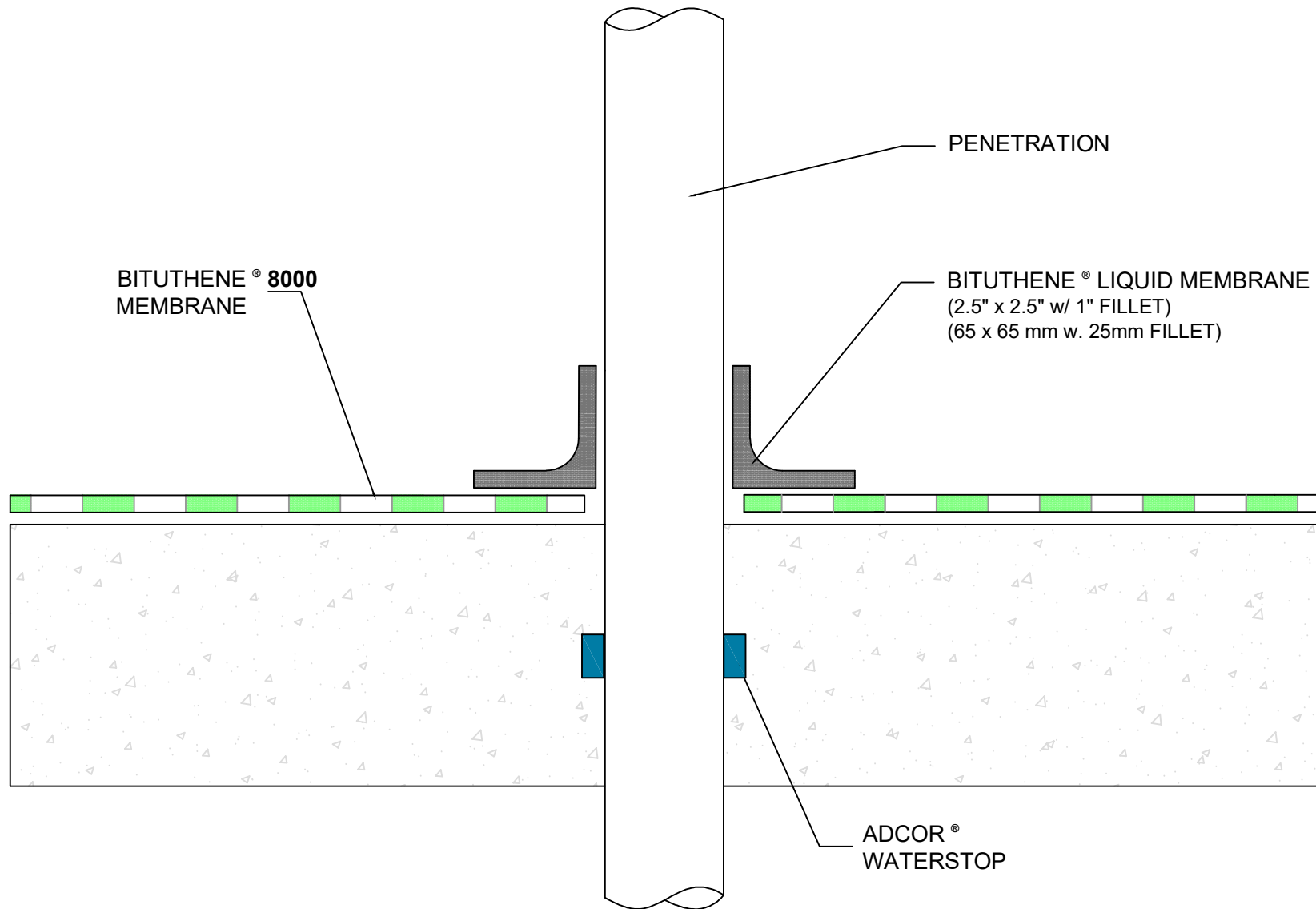
TIE INTO PLAZA DECK WATERPROOFING BITUTHENE[®] WATERPROOFING SYSTEM

DRAWING: BIT-8K-014

SCALE: Not to scale

EFFECTIVE DATE: 01/18/2022

SUPERCEDES: N/A



NOTES - HYDRODUCT® OR APPROVED PROTECTION COURSE NOT SHOWN FOR CLARITY
 - GCP MAY REQUIRE AN ALTERNATE GCP WATERSTOP BASED ON DESIGN CONDITIONS



PENETRATION

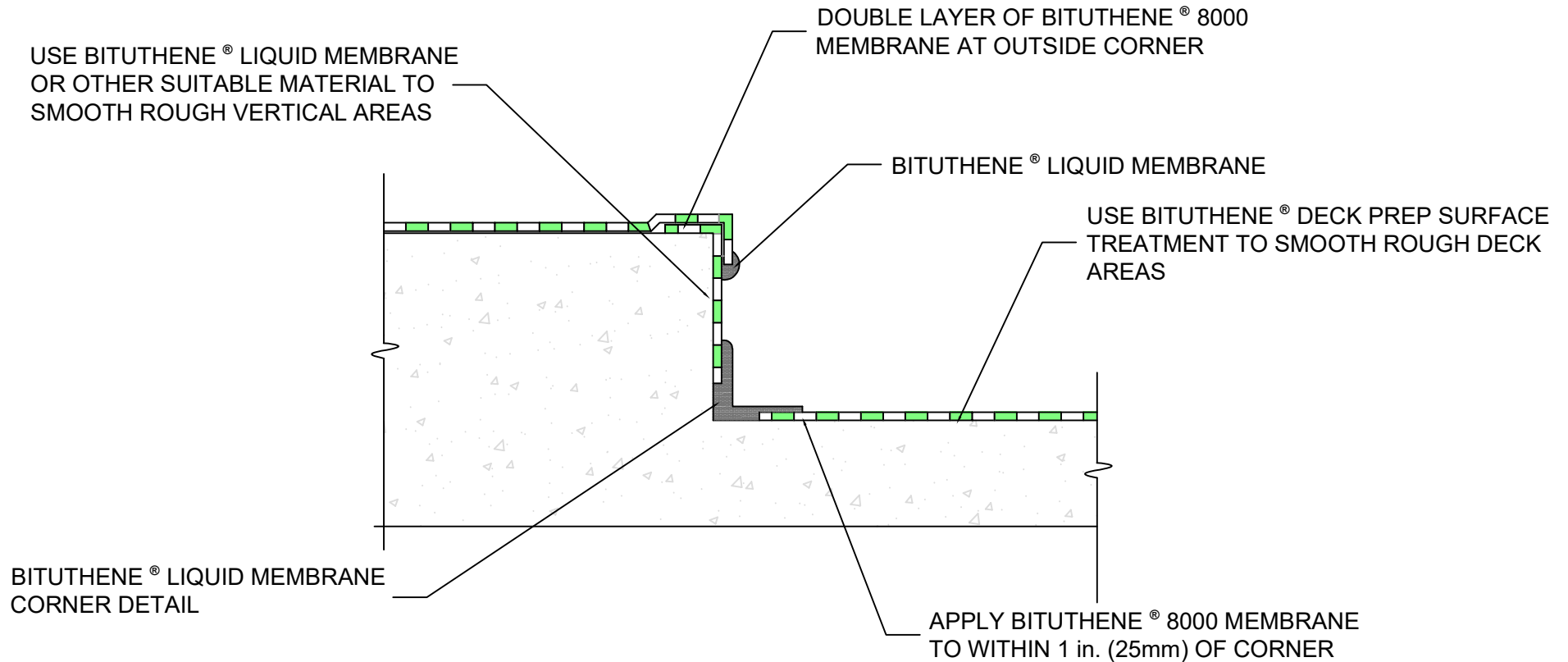
BITUTHENE® WATERPROOFING SYSTEM

DRAWING: BIT-8K-016

SCALE: Not to scale

EFFECTIVE DATE: 01/18/2022

SUPERCEDES: N/A



- NOTE
- HYDRODUCT® OR APPROVED PROTECTION COURSE NOT SHOWN FOR CLARITY
 - BITUTENE® MASTIC OR BITUTHENE® LIQUID MEMBRANE ALL SEAMS WITHIN 12 IN (300 mm) OF CORNER



POOLS, FOUNTAINS, STEPS

BITUTHENE® WATERPROOFING SYSTEM

DRAWING: BIT-8K-017

SCALE: Not to scale

EFFECTIVE DATE: 01/18/2022

SUPERCEDES: N/A

BITUTHENE® MASTIC BITUTHENE®
LIQUID MEMBRANE, OR
TERMINATION BAR

EXTEND BITUTHENE® LIQUID
MEMBRANE A MINIMUM OF 2.5 in
(65 mm) ON HORIZONTAL AND
VERTICAL

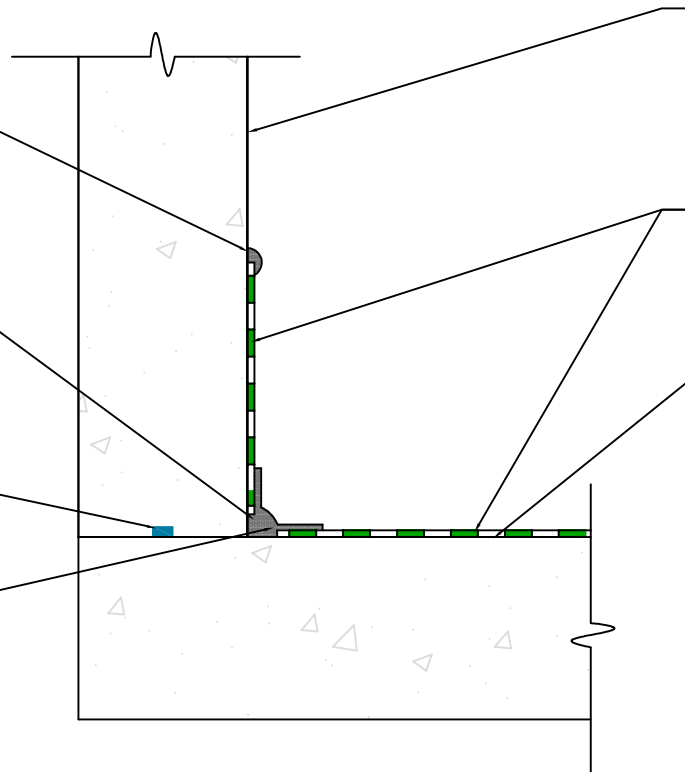
ADCOR®
WATERSTOP

APPLY BITUTHENE® 8000
MEMBRANE TO WITHIN 1in
(25mm) OF CORNER

USE BITUTHENE® LIQUID
MEMBRANE OR OTHER SUITABLE
MATERIAL TO SMOOTH ROUGH
VERTICAL AREAS

BITUTHENE® 8000 MEMBRANE

USE BITUTHENE® DECK PREP
SURFACE TREATMENT TO
SMOOTH ROUGH DECK AREAS



NOTES

- HYDRODUCT® OR APPROVED PROTECTION COURSE NOT SHOWN FOR CLARITY
- GCP MAY REQUIRE AN ALTERNATE GCP WATERSTOP BASED ON DESIGN CONDITIONS
- BITUTENE® MASTIC OR BITUTHENE® LIQUID MEMBRANE ALL SEAMS WITHIN 12 IN (300 mm) OF CORNER



PLAZA DECK DECK TO WALL INSIDE CORNER (OPTION 1) BITUTHENE® WATERPROOFING SYSTEM

DRAWING: BIT-8K-018

SCALE: Not to scale

EFFECTIVE DATE: 01/17/2022

SUPERCEDES: N/A

BITUTHENE® MASTIC, BITUTHENE®
LIQUID MEMBRANE, OR TERMINATION
BAR

USE BITUTHENE® LIQUID MEMBRANE
OR OTHER SUITABLE MATERIAL TO
SMOOTH ROUGH VERTICAL AREAS

ADCOR®
WATERSTOP

BITUTHENE® LIQUID
MEMBRANE FILLET

BITUTHENE® 8000 MEMBRANE

USE BITUTHENE® DECK PREP
SURFACE TREATMENT TO SMOOTH
ROUGH DECK AREAS

BITUTENE® MASTIC OR BITUTHENE® LIQUID
MEMBRANE ALL SEAMS WITHIN 12 IN.
(300 mm) OF CORNER

NOTES - HYDRODUCT OR APPROVED PROTECTION COURSE NOT SHOWN FOR CLARITY
- GCP MAY REQUIRE AN ALTERNATE GCP WATERSTOP BASED ON DESIGN CONDITIONS



PLAZA DECK DECK TO WALL INSIDE CORNER BITUTHENE® WATERPROOFING SYSTEM

DRAWING: BIT-8K-019

SCALE: Not to scale

EFFECTIVE DATE: 01/19/2021

SUPERCEDES: N/A

BITUTHENE® 8000 STRIP
9 in. (225 mm)

USE BITUTHENE® DECK PREP
SURFACE TREATMENT TO SMOOTH
ROUGH AREAS

HYDRODUCT® 660 DRAINAGE COMPOSITE
OR APPROVED PROTECTION COURSE

BITUTHENE LIQUID MEMBRANE® OR
APPROVED SEALANT

BITUTHENE® 8000 MEMBRANE

BACKER ROD

NOTE - FOR JOINT WHERE MOVEMENT IS EXPECTED (ACTIVE JOINTS) SEE
EXPANSION JOINT COVER DETAIL BIT 024.



PASSIVE JOINT COVER

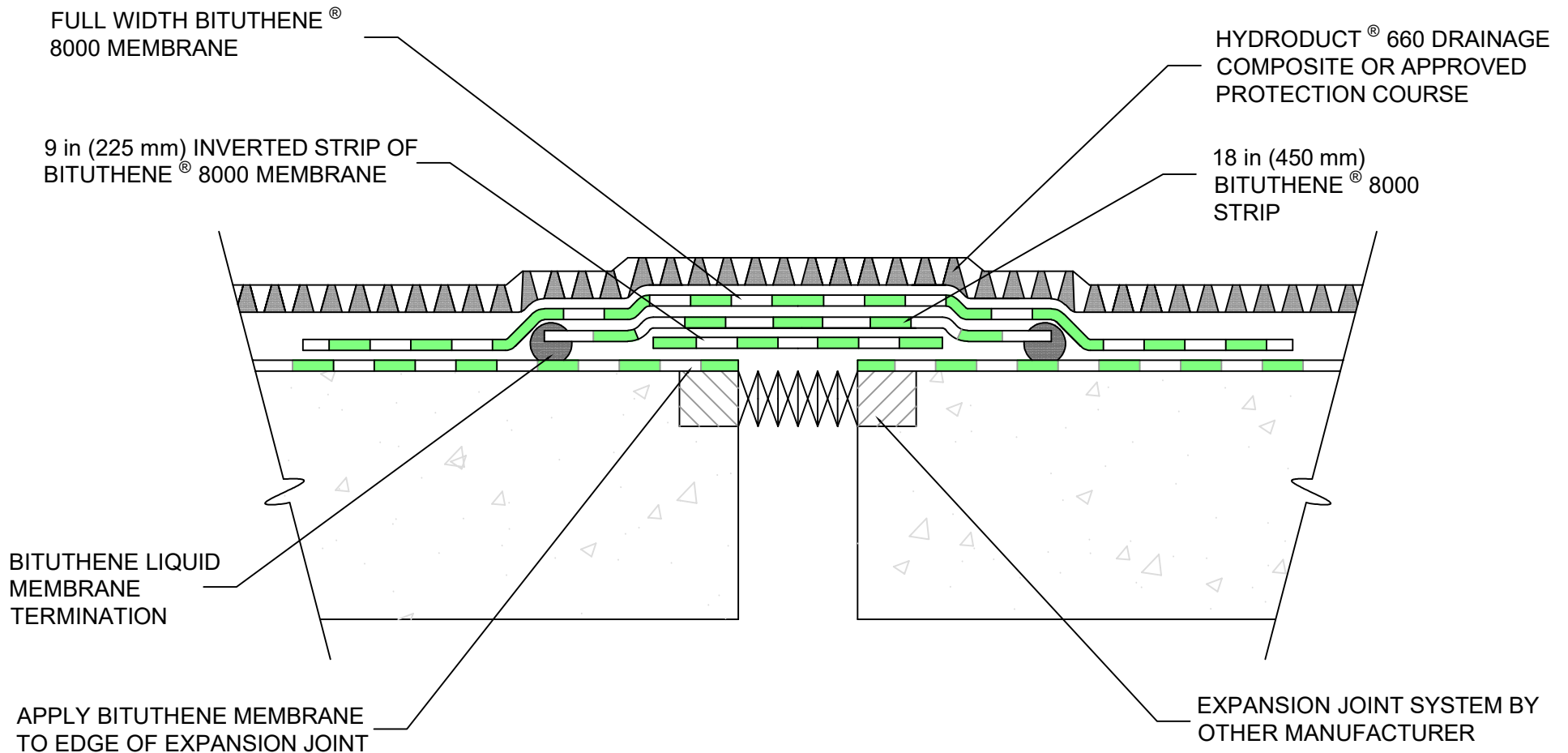
BITUTHENE® WATERPROOFING SYSTEM

DRAWING: BIT-8K- 022

SCALE: Not to scale

EFFECTIVE DATE: 01/23/2022

SUPERCEDES: N/A



- NOTES:
- FOR JOINT WIDTHS UP TO 2 IN. (50 mm) WITH A MAXIMUM OF 1 IN. (25 mm) MOVEMENT FOR JOINTS WITH EXPECTED MOVEMENT OF LESS THAN 0.5 IN. (15 mm) A 6 IN. (150 mm) INVERTED STRIP IS ACCEPTABLE.
 - A WATERPROOF EXPANSION JOINT SYSTEM BY OTHERS MUST BE SELECTED FOR THE WIDTH AND EXPECTED MOVEMENT OF THE JOINT, SEE TECHNICAL LETTER 11 FOR ADDITIONAL INFORMATION.



EXPANSION JOINT COVER DECK OR WALL

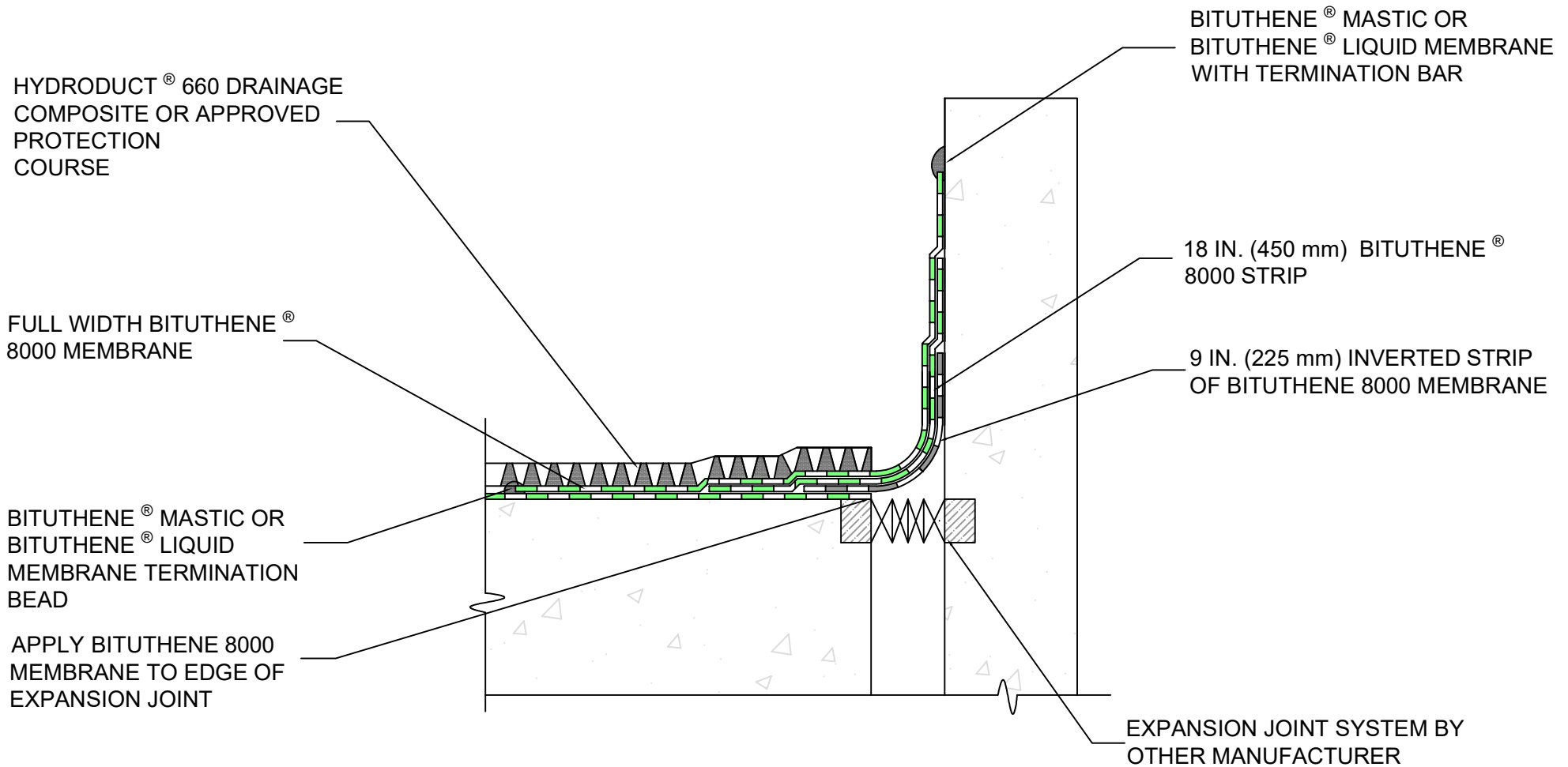
BITUTHENE[®] WATERPROOFING SYSTEM

DRAWING: BIT-8K-024

SCALE: Not to scale

EFFECTIVE DATE: 01/26/2022

SUPERCEDES: N/A



NOTES: - FOR JOINT WIDTHS UP TO 2 IN. (50 mm) WITH A MAXIMUM OF 1 IN. (25 mm) MOVEMENT. IF EXPECTED MOVEMENT IS LESS THAN 0.5 IN. (15 mm) A 6 in. (150 mm) INVERTED STRIP IS ACCEPTABLE
 - A WATERPROOF EXPANSION JOINT SYSTEM BY OTHERS MUST BE SELECTED FOR THE WIDTH AND EXPECTED MOVEMENT OF THE JOINT, SEE TECHNICAL LETTER 11 FOR ADDITIONAL INFORMATION.



EXPANSION JOINT COVER DECK TO WALL JUNCTION

BITUTHENE® WATERPROOFING SYSTEM

DRAWING: BIT-8K-025

SCALE: Not to scale

EFFECTIVE DATE: 01/23/2022

SUPERCEDES: N/A

PENETRATIONS SEALED
WITH BITUTHENE® LIQUID
MEMBRANE

HYDRODUCT® 660 DRAINAGE
COMPOSITE OR APPROVED
PROTECTION COURSE

FINISHED ELEVATION
OF DECK

$\frac{1}{8}$ INCH PER FOOT SLOPE
TO DRAIN MINIMUM

BITUTHENE® 8000
(EXTEND 6 IN ONTO
CONCRETE DECK)

BITUTHENE® 8000
MEMBRANE



DRAIN BITUTHENE® WATERPROOFING SYSTEM

DRAWING: BIT-8K-026

SCALE: Not to scale

EFFECTIVE DATE: 01/25/2022

SUPERCEDES: N/A