

- NOTES:
- A) DO NOT POSITION INJECTION PORT ASSEMBLY DIRECTLY OVER THE SIDE LAP
  - B) IF HYDRODUCT® IS USED AS PART OF THE DRAINAGE SYSTEM, 6 MIL, 1.5 mm POLY IS REQUIRED BETWEEN THE HYDRODUCT® AND THE PREPRUFE® SCS PLUS MEMBRANE



## SIDE LAP

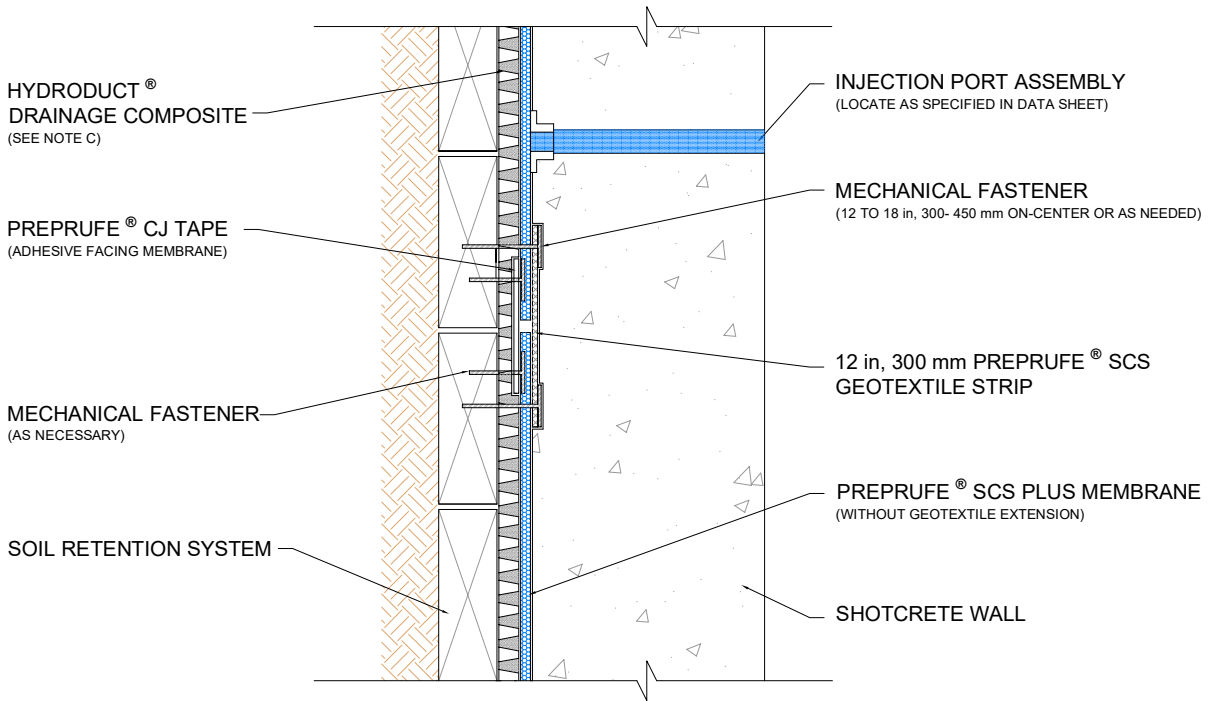
**PREPRUFE® SCS PLUS WATERPROOFING SYSTEM FOR SHOTCRETE**

DRAWING: SCS-001

SCALE: NOT TO SCALE

DATE: 03-01-2025

SUPERCEDES: 06-01-2024



- NOTES: A) USE SEAM ROLLER TO ENSURE PROPER SEAL TO THE INVERTED PREPRUFE® CJ TAPE  
 B) DO NOT POSITION INJECTION PORT ASSEMBLY DIRECTLY OVER THE END LAP  
 C) IF HYDRODUCT® IS USED AS PART OF THE DRAINAGE SYSTEM, 6 MIL, 1.5 mm POLY IS REQUIRED BETWEEN THE HYDRODUCT® AND THE PREPRUFE® SCS PLUS MEMBRANE



## END LAP

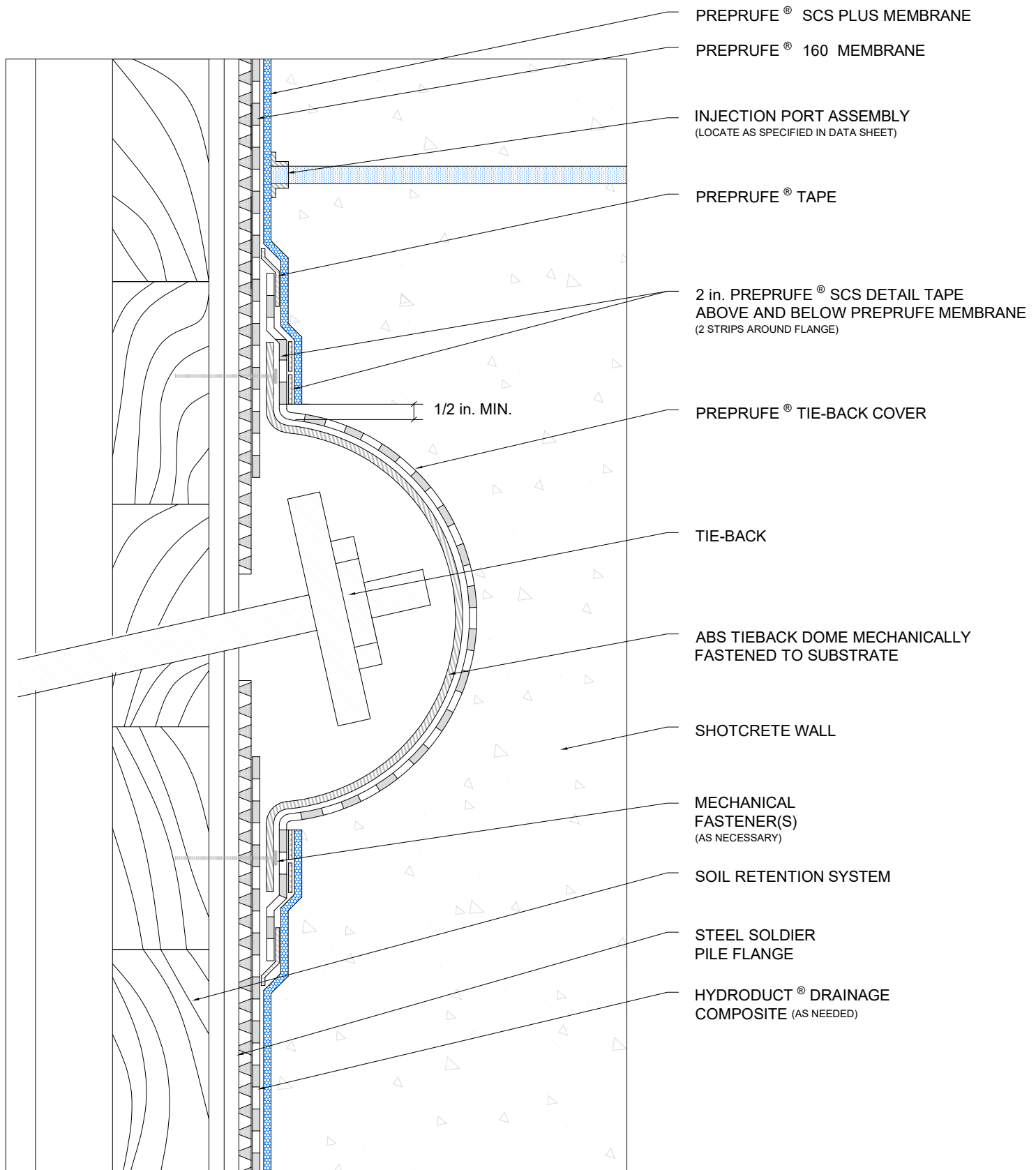
**PREPRUFE® SCS PLUS WATERPROOFING SYSTEM FOR SHOTCRETE**

DRAWING: SCS-002

SCALE: NOT TO SCALE

DATE: 03-01-2025

SUPERCEDES: 06-01-2024



**TIE-BACK COVER**

**PREPRUFE® SCS PLUS WATERPROOFING SYSTEM FOR SHOTCRETE**

DRAWING: SCS-003

SCALE: NOT TO SCALE

EFFECTIVE DATE: 03-01-2025

SUPERSEDES: 09-19-2022

**PREPRUFE<sup>®</sup> MEMBRANE PATCH**  
(EXTENDING 12" FROM O.D. OF PENETRATION)

**HYDRODUCT<sup>®</sup> DRAINAGE COMPOSITE**  
(SEE NOTE B)

**PREPRUFE<sup>®</sup> DETAIL TAPE**  
(2 COURSES MIN 1" SPACING)

**INJECTION PORT ASSEMBLY**  
(LOCATE AS SPECIFIED IN DATA SHEET)

$\frac{1}{2}$  in.  
(15 mm) (TYP)

**ADCOR<sup>®</sup> WATERSTOP**  
(SEE NOTE C)

**PENETRATION**

- SECURELY FIXED TO SUBSTRATE
- FREE OF CONNECTORS, COUPLINGS, ETC., FOR A MIN. OF 6 in, 150 mm FROM THE MEMBRANE

**MECHANICAL FASTENER(S)**  
(AS NECESSARY- TAPE OVER ALL NAIL HEADS WITH 4"x4" PP TAPE OR PREPRUFE LIQUID FLASHING)

**SOIL RETENTION SYSTEM**

**DENEFF SWELLSEAL<sup>®</sup> WA HYDROPHILIC SEALANT**  
(FILL MEMBRANE AFTER TRIMMING GEOTEXTILE FABRIC - SEE NOTE A - STEP 1)

**PREPRUFE<sup>®</sup> SCS PLUS MEMBRANE**

**SHOTCRETE WALL**

- NOTE: A) APPLY PREPRUFE<sup>®</sup> HYDROPHILIC SEALANT IN TWO SEPARATE APPLICATIONS  
STEP 1 - SEAL EDGE OF TRIMMED MEMBRANE TO PENETRATION AS SHOWN ABOVE  
STEP 2 - APPLY 1 in, 25 mm FILLET EXTENDING OVER PREPRUFE<sup>®</sup> SCS PLUS MEMBRANE AS SHOWN ABOVE  
B) IF HYDRODUCT<sup>®</sup> IS USED AS PART OF THE DRAINAGE SYSTEM, 6 MIL 1.5 mm POLY IS REQUIRED BETWEEN HYDRODUCT<sup>®</sup> AND PREPRUFE<sup>®</sup> SCS PLUS MEMBRANE  
C) GCP MAY REQUIRE AN ALTERNATE GCP WATERSTOP BASED ON DESIGN CONDITIONS



**PENETRATION (OPTION - 1)**  
**PREPRUFE<sup>®</sup> SCS PLUS WATERPROOFING SYSTEM FOR SHOTCRETE**

DRAWING: SCS-004 A

SCALE: NOT TO SCALE

DATE: 03-01-2025

SUPERCEDES: 06-01-2024

**PREPRUFE® MEMBRANE PATCH**

(EXTENDING 12" FROM O.D. OF PENETRATION )

**HYDRODUCT® DRAINAGE COMPOSITE**

(SEE NOTE B)

**PREPRUFE® DETAIL TAPE**

(2 COURSES MIN 1" SPACING)

**PENETRATION**

- SECURELY FIXED TO SUBSTRATE
- FREE OF CONNECTORS, COUPLINGS, ETC., FOR A MIN. OF 6 in, 150 mm FROM THE MEMBRANE

**MECHANICAL FASTENER(S)**

(AS NECESSARY- TAPE OVER ALL NAIL HEADS WITH 4"x4" PP TAPE OR PREPRUFE LIQUID FLASHING)

**SOIL RETENTION SYSTEM**

**INJECTION PORT ASSEMBLY**

(LOCATE AS SPECIFIED IN DATA SHEET)

**PREPRUFE® COLLAR PATCH**

(SEE PRE-034)

**PREPRUFE® TAPE**

(SEE PRE-034)

**ADCOR® WATERSTOP**

(SEE NOTE C)

½ in,  
(15 mm) (TYP)

**DENEFF SWELLSEAL®**

WA HYDROPHILIC SEALANT  
(REPLACING LIQUID MEMBRANE CANT IN PRE-034)

**PREPRUFE® SCS PLUS MEMBRANE**

**SHOTCRETE WALL**

- NOTE:
- A) IF HYDRODUCT® IS USED AS PART OF THE DRAINAGE SYSTEM, 6 MIL 1.5 mm POLY IS REQUIRED BETWEEN HYDRODUCT® AND PREPRUFE® SCS PLUS MEMBRANE
  - B) GCP MAY REQUIRE AN ALTERNATE GCP WATERSTOP BASED ON DESIGN CONDITIONS
  - C) REFER TO PRE-034 FOR PREPRUFE® PIPE PENETRATION



**PENETRATION (OPTION - 2)**

**PREPRUFE® SCS PLUS WATERPROOFING SYSTEM FOR SHOTCRETE**

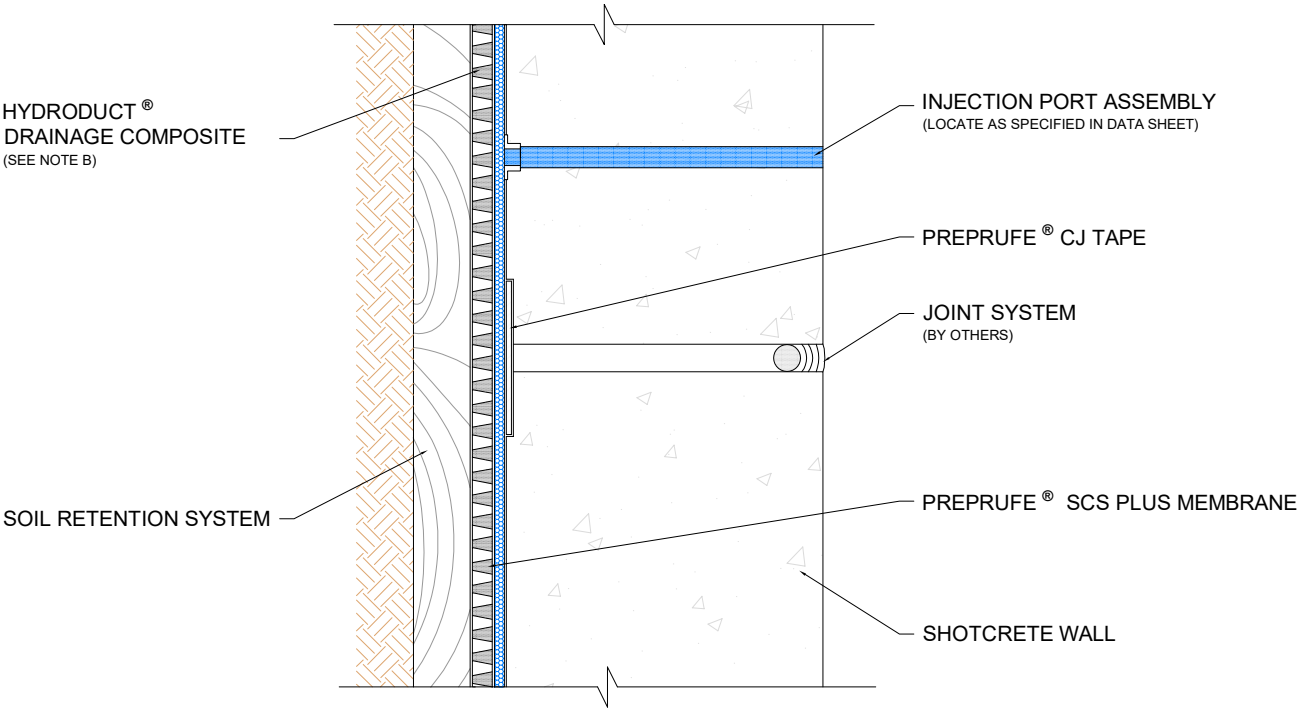
DRAWING: SCS-004 B

SCALE: NOT TO SCALE

DATE: 03-01-2025

SUPERCEDES: 06-01-2024

PLAN VIEW

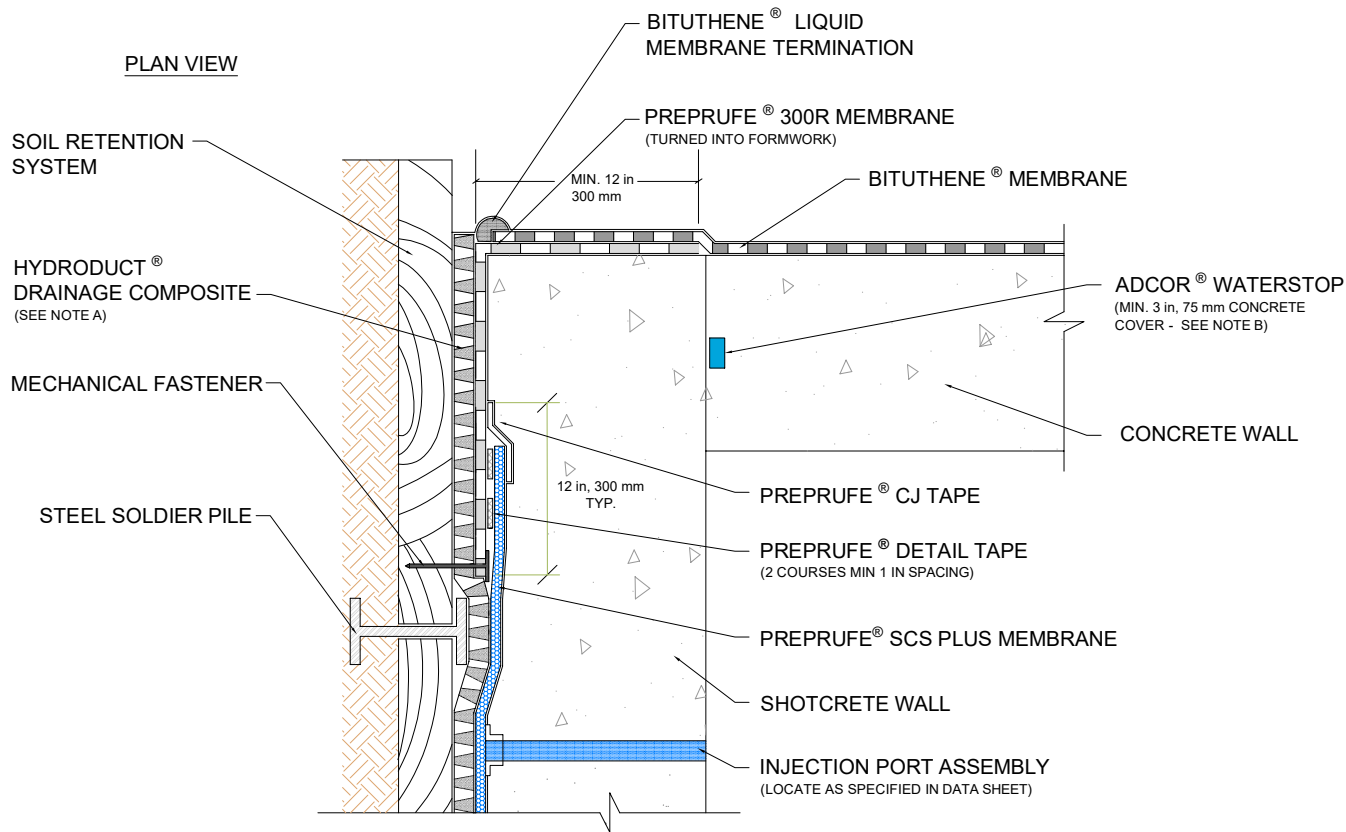


- NOTES:
- A) JOINT WATERPROOFING DESIGN BY OTHERS
  - B) IF HYDRODUCT® IS USED AS PART OF THE DRAINAGE SYSTEM, 6 MIL, 1.5 mm POLY IS REQUIRED BETWEEN THE HYDRODUCT® AND THE PREPRUFE® SCS PLUS MEMBRANE



VERTICAL WALL CONTROL/CONTRACTION JOINT  
PREPRUFE® SCS PLUS WATERPROOFING SYSTEM FOR SHOTCRETE

DRAWING: SCS-005
SCALE: NOT TO SCALE
DATE: 03-01-2025
SUPERCEDES: 06-01-2024



- NOTES: A) IF HYDRODUCT<sup>®</sup> IS USED AS PART OF THE DRAINAGE SYSTEM, 6 MIL, 1.5 mm POLY IS REQUIRED BETWEEN THE HYDRODUCT<sup>®</sup> AND THE PREPRUFE<sup>®</sup> SCS PLUS MEMBRANE
- B) GCP MAY REQUIRE AN ALTERNATE GCP WATERSTOP BASED ON DESIGN CONDITIONS



**TIE INTO BITUTHENE<sup>®</sup> (WALL)**

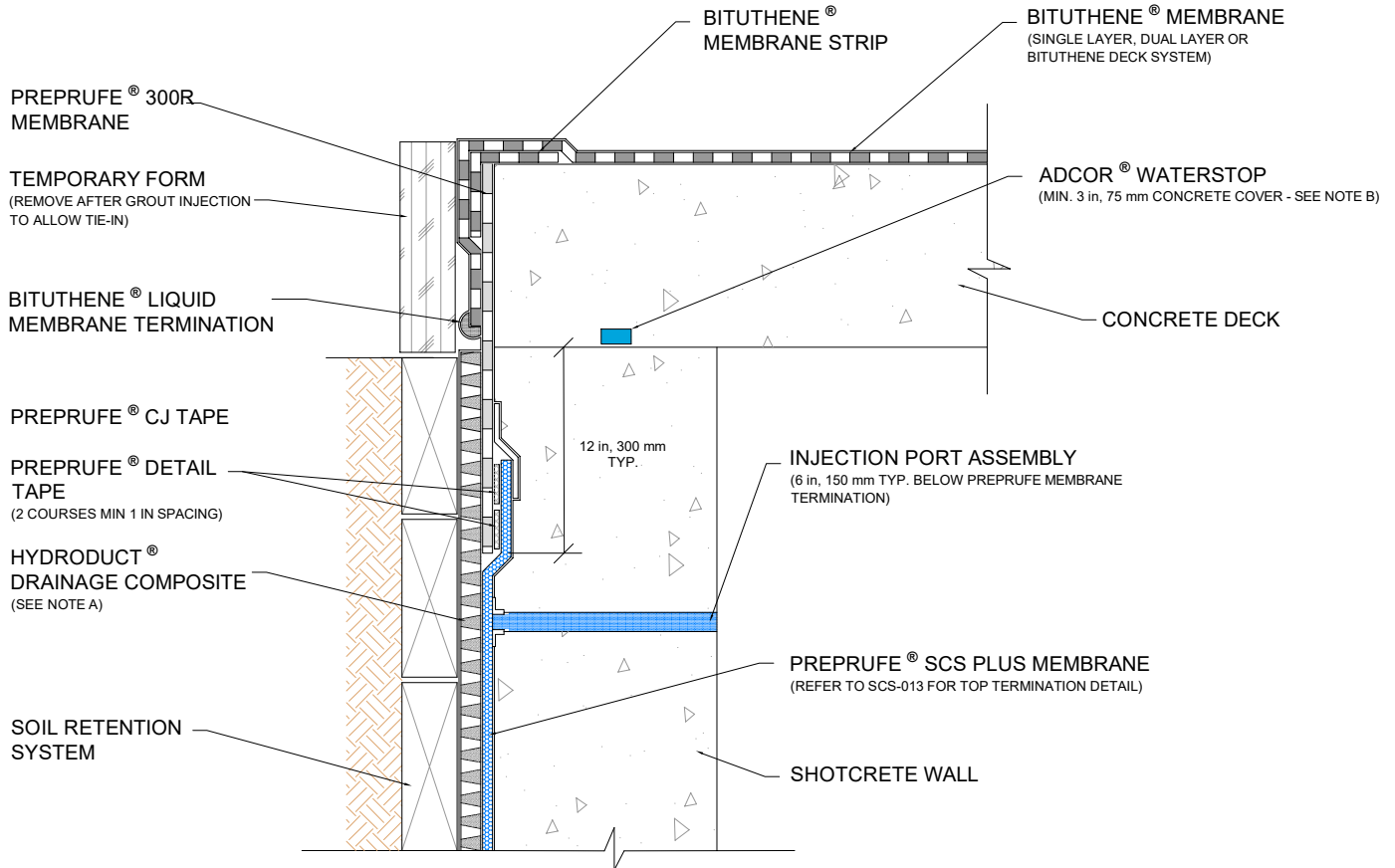
**PREPRUFE<sup>®</sup> SCS PLUS WATERPROOFING SYSTEM FOR SHOTCRETE**

DRAWING: SCS-006

SCALE: NOT TO SCALE

DATE: 03-01-2025

SUPERCEDES: 06-01-2024



- NOTES: A) IF HYDRODUCT® IS USED AS PART OF THE ACTIVE DRAINAGE SYSTEM, 6 MIL 1.5 mm POLY IS REQUIRED BETWEEN THE HYDRODUCT® AND THE PREPRUFE® SCS PLUS MEMBRANE
- B) GCP MAY REQUIRE AN ALTERNATE GCP WATERSTOP BASED ON DESIGN CONDITIONS



## TIE INTO BITUTHENE® (DECK)

### PREPRUFE® SCS PLUS WATERPROOFING SYSTEM FOR SHOTCRETE

DRAWING: SCS-007

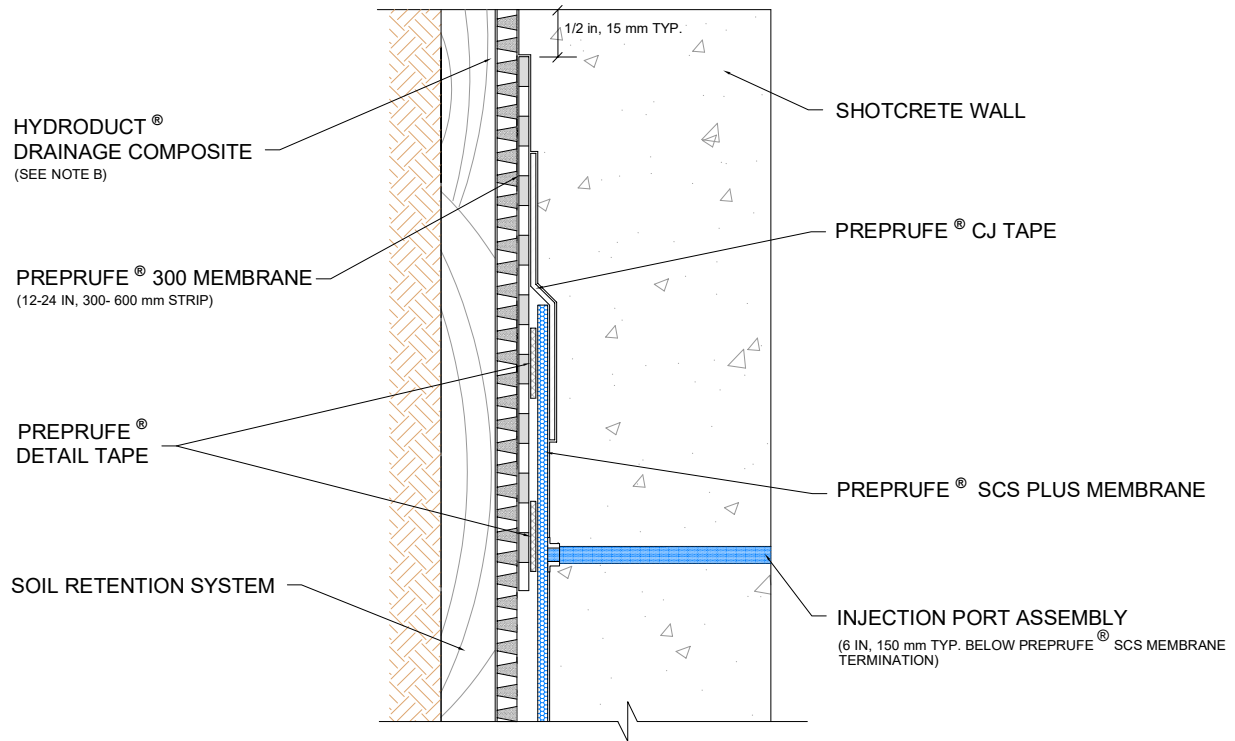
SCALE: NOT TO SCALE

DATE: 03-01-2025

SUPERCEDES: 06-01-2024



# PLAN VIEW



## NOTES:

- A) TRIM GEOTEXTILE EXTENSION FROM EDGE OF THE PREPRUFE® SCS MEMBRANE PRIOR TO SEALING SIDE TERMINATION WITH PREPRUFE® CJ TAPE
- B) IF HYDRODUCT® IS USED AS PART OF THE DRAINAGE SYSTEM, 6 MIL, 1.5 mm POLY IS REQUIRED BETWEEN THE HYDRODUCT® AND THE PREPRUFE® SCS PLUS MEMBRANE



## SIDE TERMINATION

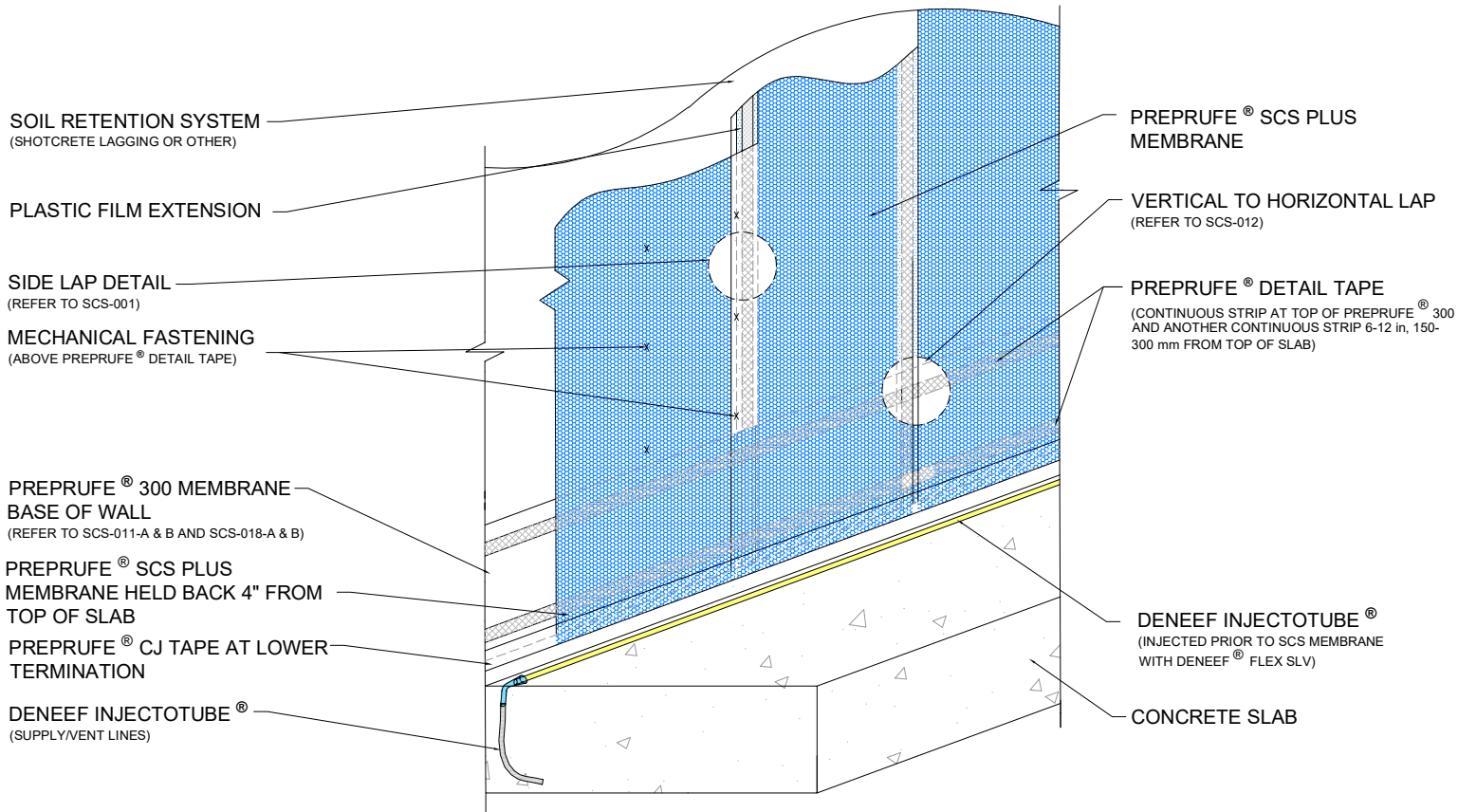
PREPRUFE® SCS PLUS WATERPROOFING SYSTEM FOR SHOTCRETE

DRAWING: SCS-008

SCALE: NOT TO SCALE

DATE: 03-01-2025

SUPERCEDES: 06-01-2024



NOTES:

- A) INJECTION PORT ASSEMBLY NOT SHOWN FOR CLARITY  
 B) HYDRODUCT® OR APPROVED FACING MATERIAL NOT SHOWN ON SOIL RETENTION SYSTEM FOR CLARITY  
 C) IF HYDRODUCT® IS USED AS PART OF THE DRAINAGE SYSTEM, 6 MIL, 1.5 mm POLY IS REQUIRED BETWEEN THE HYDRODUCT® AND THE PREPRUFE® SCS PLUS MEMBRANE  
 D) SEE DETAILS SCS-011-A & B AND SCS-018-A & B FOR SECTION VIEWS AND FURTHER DETAILING INSTRUCTIONS AT BASE OF WALL



**BASE OF WALL - ELEVATION DETAIL**  
**PREPRUFE® SCS PLUS WATERPROOFING SYSTEM FOR SHOTCRETE**

DRAWING: SCS-009

SCALE: NOT TO SCALE

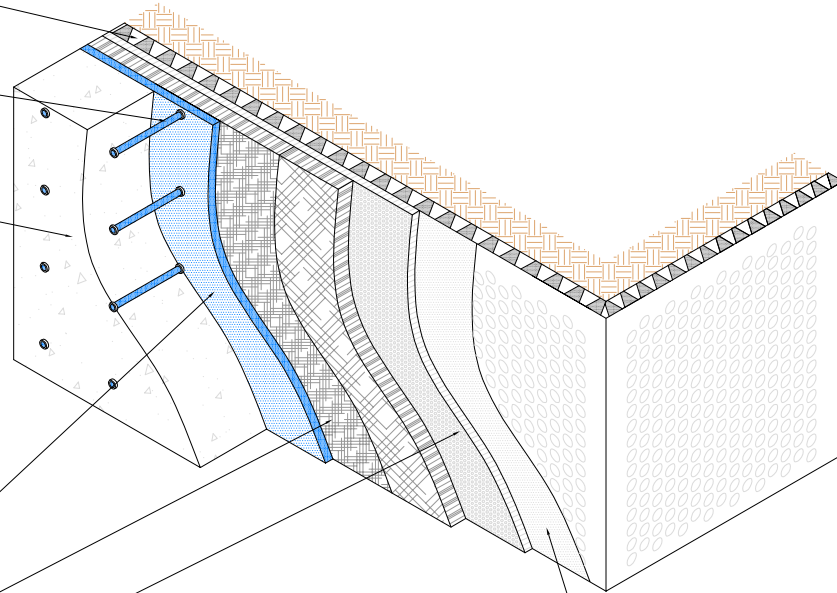
DATE: 03-01-2025

SUPCEDES: 06-01-2024

HYDRODUCT® DRAINAGE  
COMPOSITE

INJECTION  
PORT ASSEMBLY

SHOTCRETE WALL



- \* SCS HYDROPHILIC GROUT  
(WETTED TO SHOTCRETE SURFACE)
- \* SCS GEOTEXTILE FABRIC  
(IMPERMEABLE TO CEMENT PASTE,  
PERMEABLE TO SCS GROUT)
- \* SCS HDPE BACKSHEET

POLY SHEET BETWEEN HYDRODUCT®  
AND PREPRUFE® SCS PLUS  
MEMBRANE  
(6 MIL 1.5 mm )

\* PREPRUFE® SCS PLUS SYSTEM COMPONENTS



PREPRUFE® SCS PLUS  
SYSTEM CROSS SECTION SHOTCRETE WATERPROOFING SYSTEM

DRAWING: SCS-010

SCALE: NOT TO SCALE

DATE: 03/01/2025

SUPERCEDES: 08-01-2016