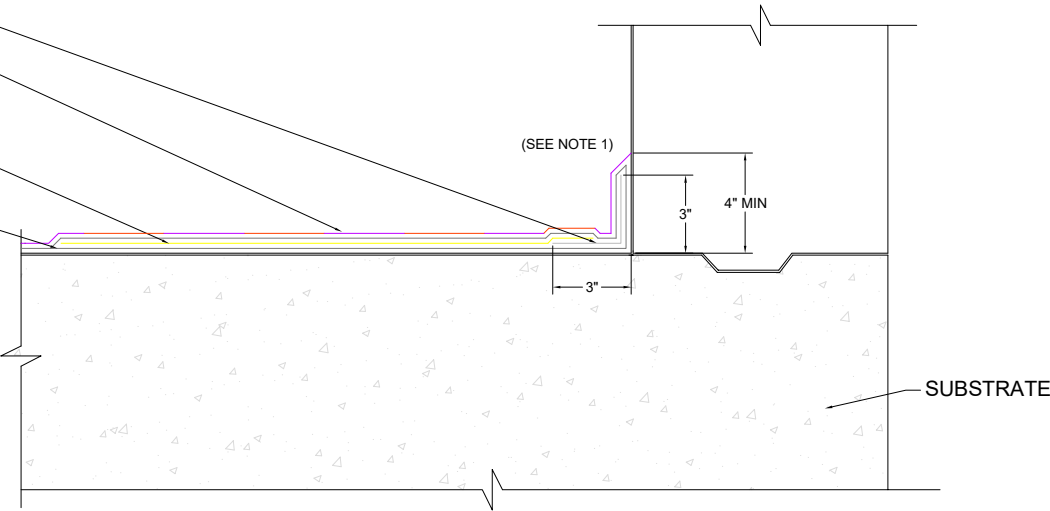


BITUTHENE® HRA NEOPRENE
(OR FABRIC)

BITUTHENE® HRA PROTECTION G
(OR PROTECTION P)

BITUTHENE® HRA FABRIC

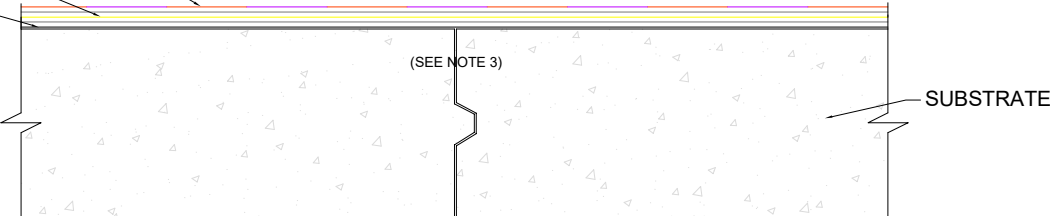
BITUTHENE® HRA



BITUTHENE® HRA PROTECTION G
(OR PROTECTION P)

BITUTHENE® HRA FABRIC

BITUTHENE® HRA



- NOTES:
1. IN COVERED/BURIED CONDITIONS, HRA IS EXTENDED AS CONTINUOUS FLASHING AS HIGH AS POSSIBLE. FLASHING MUST BE TERMINATED AT OVERBURDEN LEVEL AND NO LESS THAN 4" ABOVE THE SUBSTRATE
 2. REGLETS CAN BE CAST/FORMED OR CUT INTO THE CONCRETE. REGLETS SHOULD BE MIN. 1/2" DEEP AND PROVIDE AN EASY TRANSITION FOR THE MEMBRANE FLASHING
 3. ADDITIONAL REINFORCEMENT NOT REQUIRED AT TYPICAL CONSTRUCTION/CONTROL JOINTS WITH THE FABRIC REINFORCED ASSEMBLY



CONCRETE CONSTRUCTION JOINTS

BITUTHENE® HRA WATERPROOFING SYSTEM

DRAWING: HRA-003

SCALE: NOT TO SCALE

EFFECTIVE DATE: 03-01-2025

SUPERCEDES: N/A