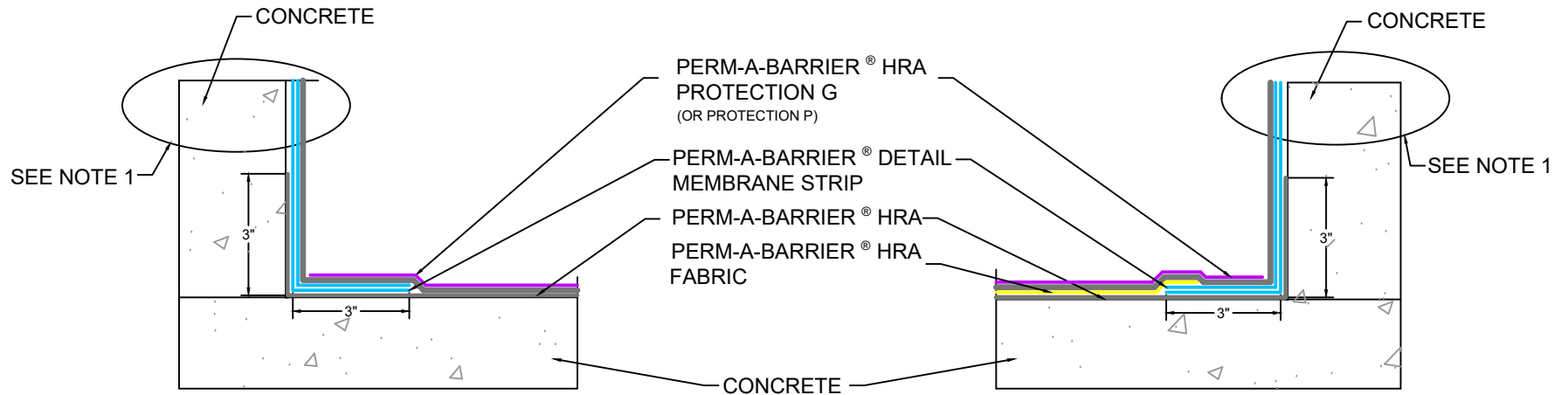
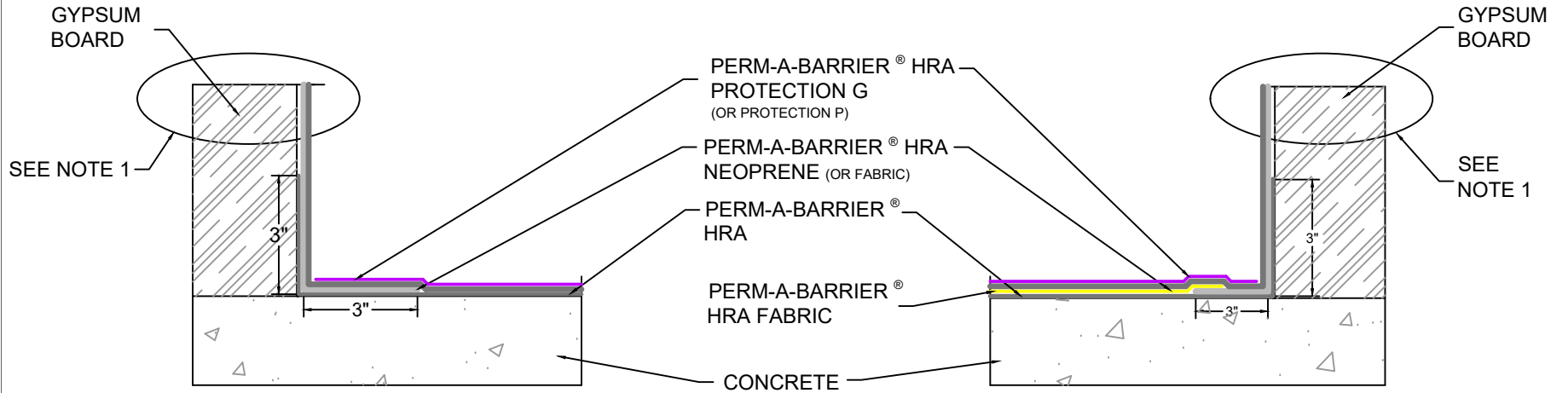


STANDARD ASSEMBLY

FABRIC REINFORCED ASSEMBLY



NOTES
1. CORNER WILL TRANSITION BY DESIGN OF THE WALL, FOLLOW GCP APPROVED TIE-IN DETAIL



CORNER TRANSITION
PERM-A-BARRIER® HRA WATERPROOFING SYSTEM

DRAWING: HRA-012
SCALE: NOT TO SCALE
EFFECTIVE DATE: 07-01-2024
SUPERCEDES: N/A