

PERM-A-BARRIER® HRA
PROTECTION G
(OR PROTECTION P)

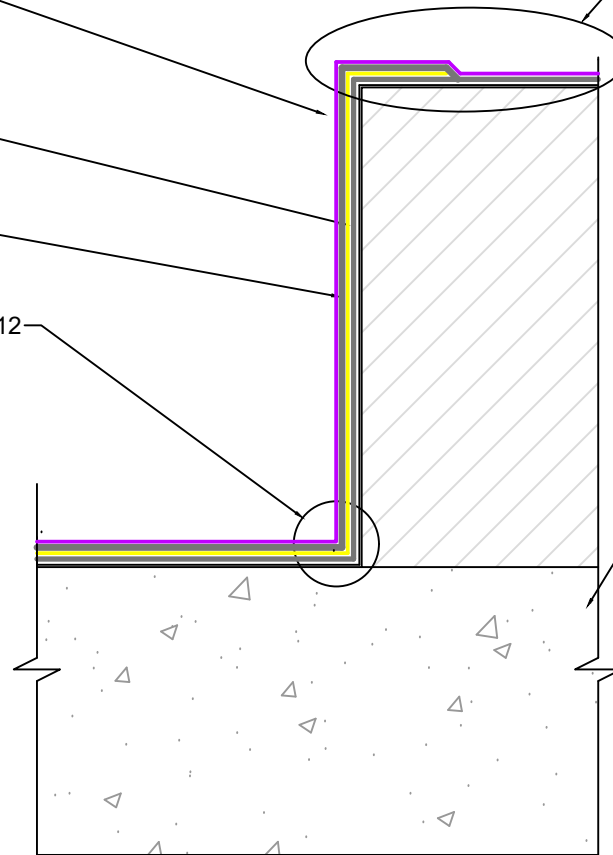
PERM-A-BARRIER® HRA
FABRIC (OR NEOPRENE)

PERM-A-BARRIER® HRA

REFER TO DETAIL HRA-012
FOR CORNER DETAILS

IF PERMANENTLY EXPOSED, USE
PERM-A-BARRIER® HRA CAP SHEET
APPROVED DETAILS

SUBSTRATE



PLANTER

PERM-A-BARRIER® HRA MEMBRANE SYSTEM

DRAWING: HRA-009

SCALE: NOT TO SCALE

EFFECTIVE DATE: 07-01-2024

SUPERCEDES: N/A