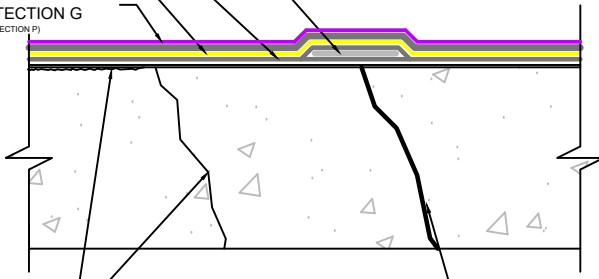


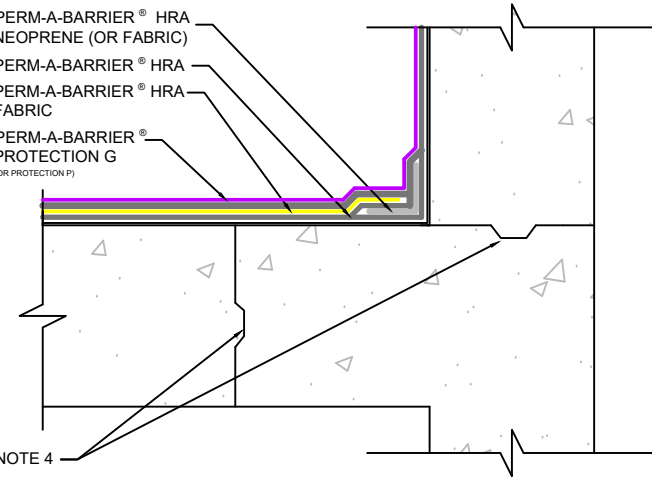
PERM-A-BARRIER® HRA
 NEOPRENE (OR FABRIC)
 PERM-A-BARRIER®
 HRA
 PERM-A-BARRIER®
 HRA FABRIC
 PERM-A-BARRIER®
 PROTECTION G
 (OR PROTECTION P)



SEE NOTES REGARDING
SHRINKAGE CRACKS <math>< \frac{1}{16}</math>"

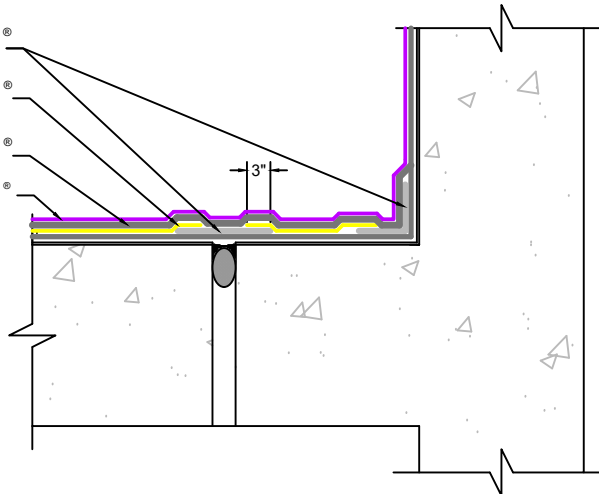
STRUCTURAL CRACKS
>math>\frac{1}{16}</math>" & <math>< \frac{1}{4}</math>" IN WIDTH

PERM-A-BARRIER® HRA
 NEOPRENE (OR FABRIC)
 PERM-A-BARRIER® HRA
 PERM-A-BARRIER® HRA
 FABRIC
 PERM-A-BARRIER®
 PROTECTION G
 (OR PROTECTION P)

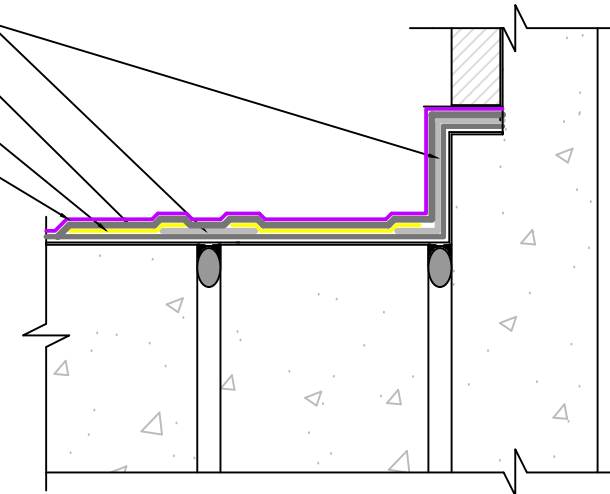


SEE NOTE 4

PERM-A-BARRIER®
 HRA NEOPRENE
 PERM-A-BARRIER®
 HRA FABRIC
 PERM-A-BARRIER®
 HRA
 PERM-A-BARRIER®
 PROTECTION G
 (OR PROTECTION P)



PERM-A-BARRIER®
 HRA NEOPRENE
 PERM-A-BARRIER®
 HRA
 PERM-A-BARRIER®
 HRA FABRIC
 PERM-A-BARRIER®
 PROTECTION G
 (OR PROTECTION P)



NOTES:

1. ADDTL REINFORCEMENT NOT REQUIRED FOR ROUGH CONCRETE OR CRACKS UP TO $\frac{1}{16}$ "
2. EXPANSION JOINTS UP TO 1" IN WIDTH AND MAX 25% MOVEMENT ACCOMMODATION FACTOR (REF. HRA-004)
3. FOR EXPANSION JOINTS GREATER THAN 2", EXPANSION JOINTS ANTICIPATING GREATER THAN 25%
4. CONSTRUCTION JOINTS & AT ALL CHANGES IN PLANE (HRA-003)
5. MOVEMENT ACCOMMODATION FACTOR AND FOR SEISMIC EXPANSION JOINTS, THE USE OF PRE-FABRICATED, PROPRIETARY JOINT SYSTEMS SHOULD BE CONSIDERED



CRACK AND JOINT TREATMENT

PERM-A-BARRIER® HRA WATERPROOFING SYSTEM

DRAWING: HRA-002

SCALE: NOT TO SCALE

EFFECTIVE DATE: 07-01-2024

SUPERCEDES: N/A