

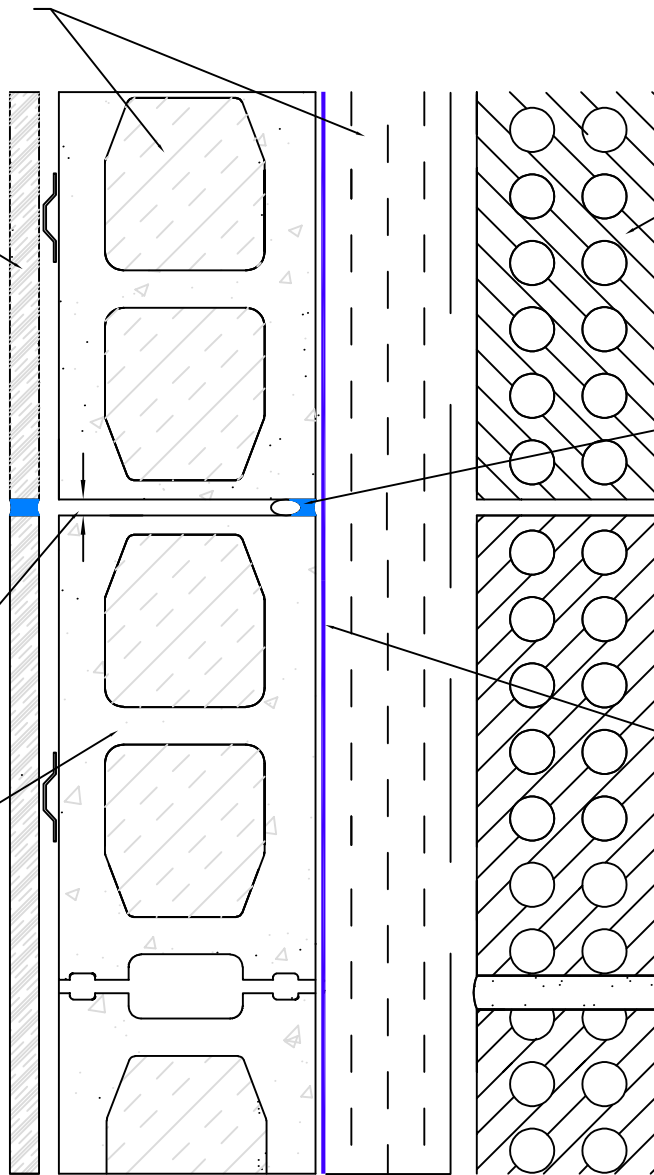
PLAN VIEW

INSULATION TYPE AND PLACEMENT
DETERMINED BY OTHERS
(SEE NOTE A)

GYPSUM BOARD

MAX. 1/2 IN. JOINT CAPABLE OF MAX.
10% MOVEMENT IN COMPRESSION
AND ELONGATION

CMU OR CONCRETE WALL



MASONRY VENEER

BACKER ROD AND PERM-A-BARRIER
UNIVERSAL FLASHING AND SEALANT
APPLIED INTO JOINT

PERM-A-BARRIER® ULTRA

- Important Notes:**
- A. Detail not suitable for all climates. Avoiding excessive moisture accumulation in exterior walls is dependent on many factors including proper placement of insulation and air and vapor barriers in the wall. For assistance with exterior wall design, consult with a building science professional or a GCP representative.
 - B. To ensure a continuous air barrier across the building envelope, a fully continuous connection should be made to the roof system and GCP Waterproofing System.
 - C. Ensure window system is properly aligned with wall insulation and installed per the window manufacturer's recommendations to ensure continuity of the air barrier system.
 - D. Install all GCP products in accordance with GCP Product Data Sheets and GCP recommendations.



**Control Joint
Perm-A-Barrier® ULTRA
Air Barrier System**

DRAWING: PWM - 118

SCALE: Not to scale

EFFECTIVE DATE: 12/10/2023

SUPERSEDES: NEW