

PLAN VIEW

INSULATION, TYPE AND PLACEMENT DETERMINED BY OTHERS (SEE NOTE A)

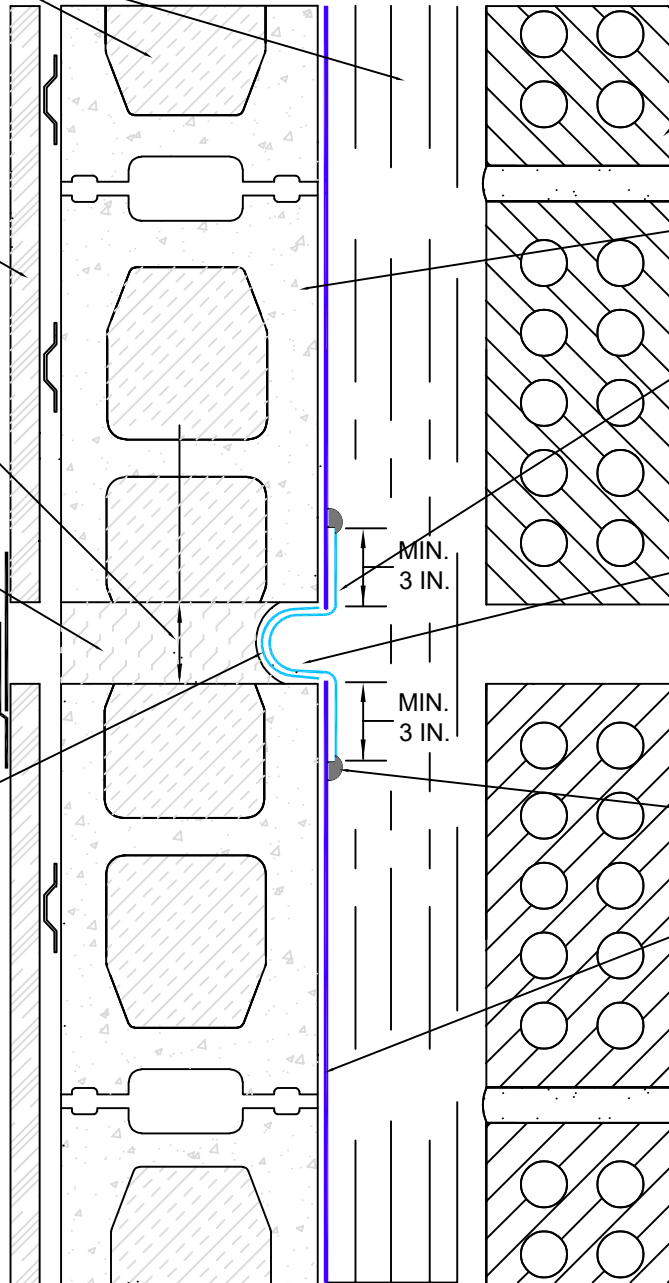
GYPSUM BOARD

MAX. 4 IN. WIDE JOINT CAPABLE OF A MAX. 50% MOVEMENT IN COMPRESSION AND ELONGATION

OPTIONAL COMPRESSIBLE JOINT FILLER BY OTHERS

INVERTED STRIP OF PERM-A-BARRIER® ULTRA, ALUMINUM FLASHING OR DETAIL MEMBRANE

NOTE: WIDTH OF THE INVERTED STRIP SHALL BE TWICE WIDTH OF THE EXPANSION JOINT TO ACCOMMODATE MOVEMENT



MASONRY VENEER

CMU OR CONCRETE WALL

PERM-A-BARRIER® ULTRA, ALUMINUM FLASHING OR DETAIL MEMBRANE ADHERED TO BOTH SIDES OF EXPANSION JOINT WITH ENTIRE INVERTED STRIP OF SAME MATERIAL FOLDED INTO EXPANSION JOINT

NOTE: DO NOT FILL OUTSIDE "U" SHAPED AREA OF THE EXPANSION JOINT FLASHING WITH FILLER

MIN. 3 IN.

MIN. 3 IN.

BITUTHENE® LIQUID MEMBRANE OR UNIVERSAL FLASHING & SEALANT AT EDGES OF EXPANSION JOINT FLASHING

PERM-A-BARRIER® ULTRA

- Important Notes:**
- A. Detail not suitable for all climates. Avoiding excessive moisture accumulation in exterior walls is dependent on many factors including proper placement of insulation and air and vapor barriers in the wall. For assistance with exterior wall design, consult with a building science professional or a GCP representative.
 - B. To ensure a continuous air barrier across the building envelope, a fully continuous connection should be made to the roof system and GCP Waterproofing System.
 - C. Ensure window system is properly aligned with wall insulation and installed per the window manufacturer's recommendations to ensure continuity of the air barrier system.
 - D. Install all GCP products in accordance with GCP Product Data Sheets and GCP recommendations.



Expansion Joint
Perm-A-Barrier® ULTRA
Air Barrier System

DRAWING: PWM - 116r1

SCALE: Not to scale

EFFECTIVE DATE: 12/10/23

SUPERSEDES: PWM - 116