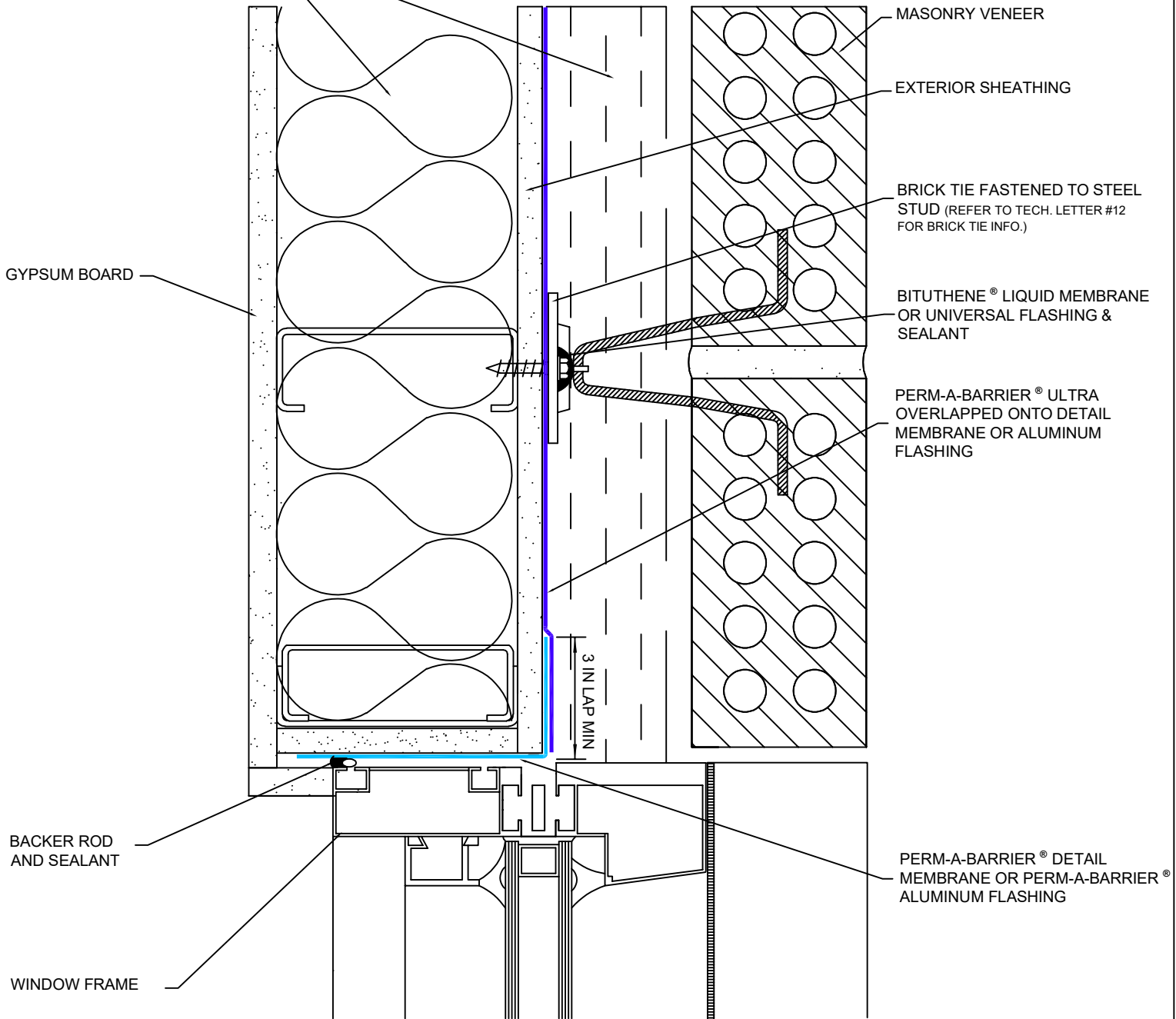


INSULATION TYPE AND PLACEMENT  
DETERMINED BY OTHERS  
(SEE NOTE A)

PLAN VIEW



- Important Notes:**
- A. Detail not suitable for all climates. Avoiding excessive moisture accumulation in exterior walls is dependent on many factors including proper placement of insulation and air and vapor barriers in the wall. For assistance with exterior wall design, consult with a building science professional or a GCP representative.
  - B. To ensure a continuous air barrier across the building envelope, a fully continuous connection should be made to the roof system and GCP waterproofing system.
  - C. Ensure window system is properly aligned with wall insulation and installed per the window manufacturer's recommendations to ensure continuity of the air barrier system.
  - D. Install all GCP products in accordance with GCP Product Data Sheets and GCP recommendations.



Window Jamb - Option B  
Perm-A-Barrier® ULTRA  
Air Barrier System

DRAWING: PWM - 007r1

SCALE: Not to scale

EFFECTIVE DATE: 12/10/23

SUPERSEDES: PWM - 007