

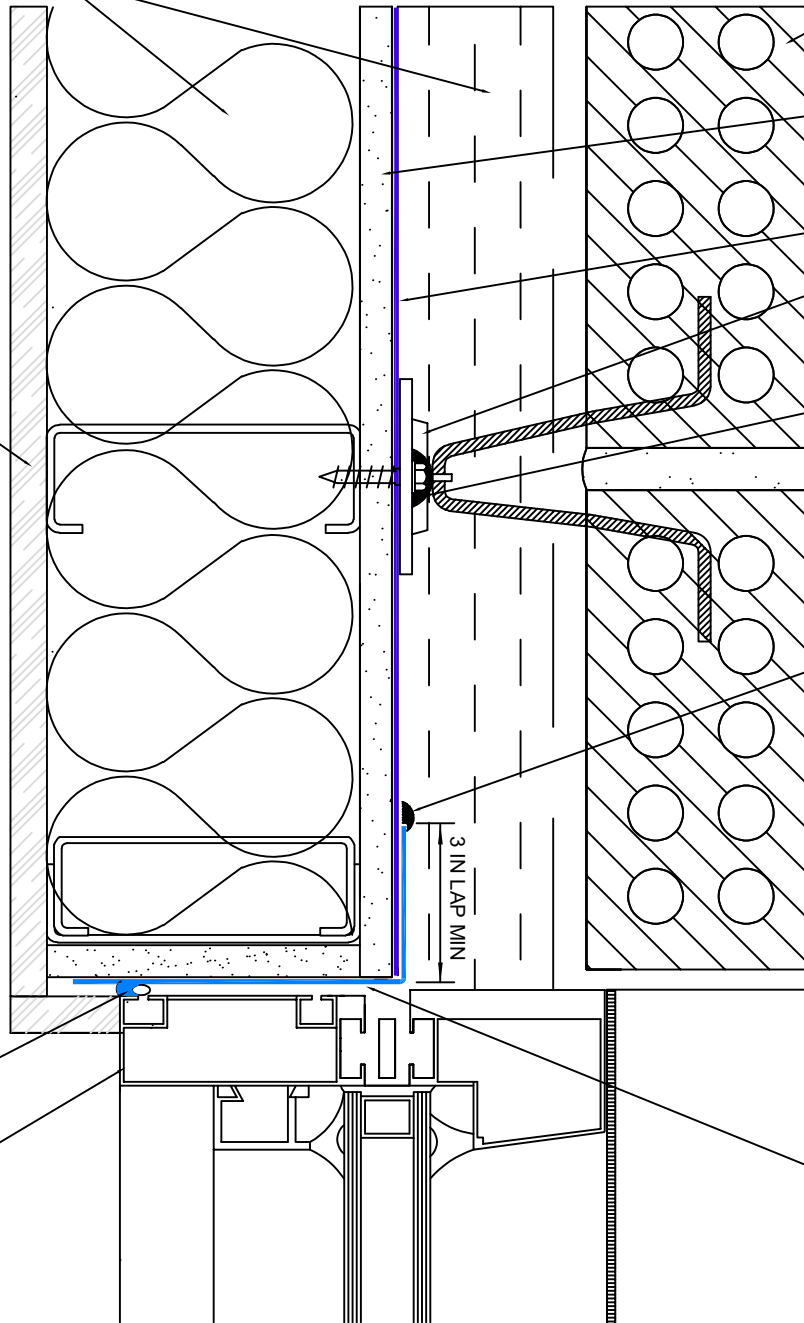
PLAN VIEW

INSULATION TYPE AND PLACEMENT DETERMINED BY OTHERS (SEE NOTE A)

GYPSUM BOARD

BACKER ROD AND PERM-A-BARRIER® UNIVERSAL FLASHING & SEALANT

WINDOW FRAME



MASONRY VENEER

EXTERIOR SHEATHING

PERM-A-BARRIER® ULTRA

BRICK TIE FASTENED TO STEEL STUD (REFER TO TECH. LETTER #12 FOR BRICK TIE INFO.)

BITUTHENE® LIQUID MEMBRANE OR PERM-A-BARRIER® UNIVERSAL FLASHING AND SEALANT

BITUTHENE® LIQUID MEMBRANE OR PERM-A-BARRIER® UNIVERSAL FLASHING AND SEALANT

PERM-A-BARRIER® DETAIL MEMBRANE OR ALUMINUM FLASHING

3 IN LAP MIN

- Important Notes:**
- A. Detail not suitable for all climates. Avoiding excessive moisture accumulation in exterior walls is dependent on many factors including proper placement of insulation and air and vapor barriers in the wall. For assistance with exterior wall design, consult with a building science professional or a GCP representative.
 - B. To ensure a continuous air barrier across the building envelope, a fully continuous connection should be made to the roof system and GCP waterproofing system.
 - C. Ensure window system is properly aligned with wall insulation and installed per the window manufacturer's recommendations to ensure continuity of the air barrier system.
 - D. Install all GCP products in accordance with GCP Product Data Sheets and GCP recommendations.



Window Jamb - Option A
 Perm-A-Barrier® ULTRA
 Air Barrier System

DRAWING: PWM - 003r1

SCALE: Not to scale

EFFECTIVE DATE: 12/10/23

SUPERSEDES: PWM - 003