

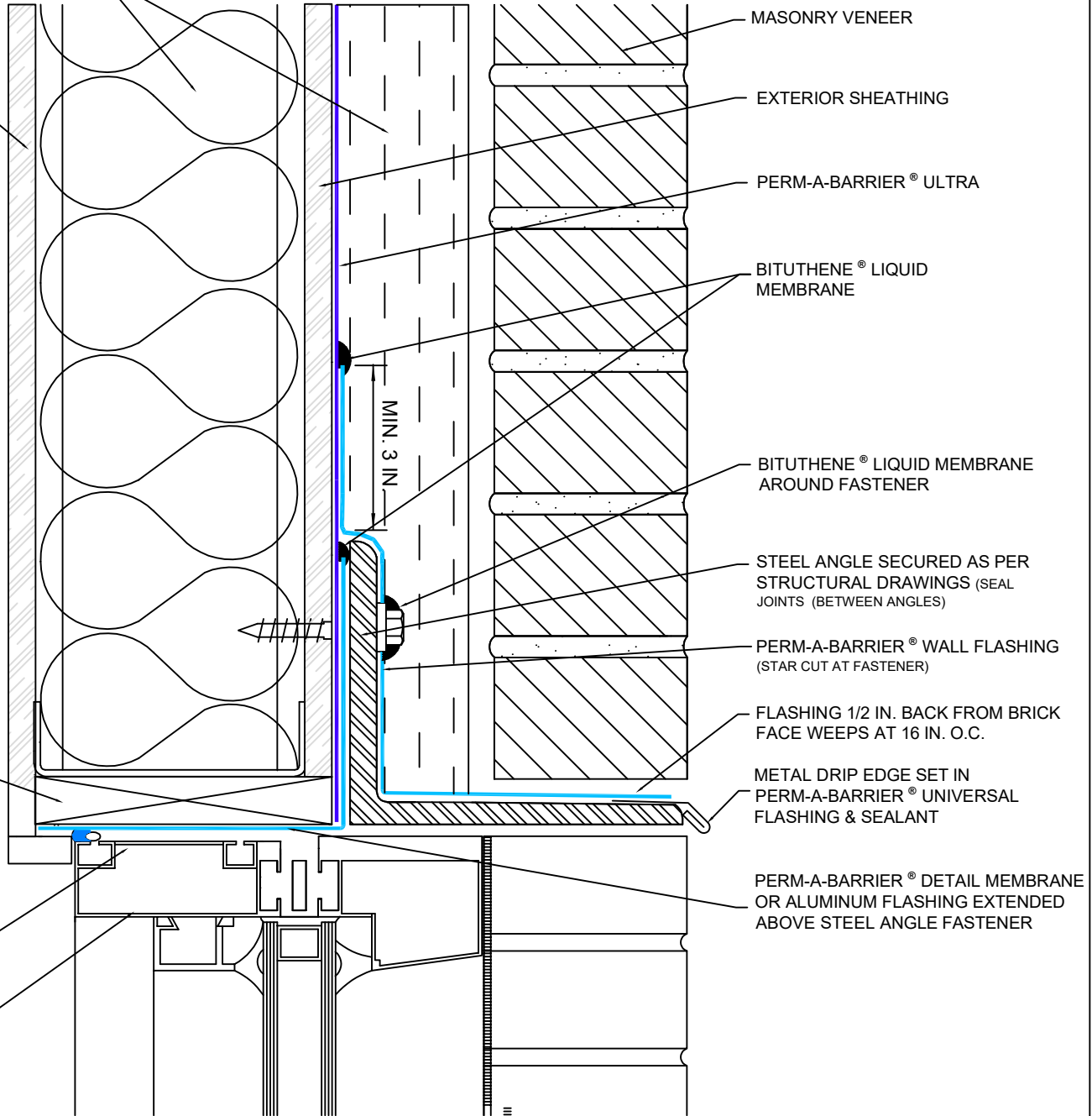
INSULATION, TYPE AND PLACEMENT
DETERMINED BY OTHERS
(SEE NOTE A)

GYPSUM BOARD

WOOD BLOCKING

BACKER ROD AND
PERM-A-BARRIER®
UNIVERSAL FLASHING
& SEALANT

WINDOW FRAME



- Important Notes:**
- A. Detail not suitable for all climates. Avoiding excessive moisture accumulation in exterior walls is dependent on many factors including proper placement of insulation and air and vapor barriers in the wall. For assistance with exterior wall design, consult with a building science professional or a GCP representative.
 - B. To ensure a continuous air barrier across the building envelope, a fully continuous connection should be made to the roof system and GCP Waterproofing System.
 - C. Ensure window system is properly aligned with wall insulation and installed per the window manufacturer's recommendations to ensure continuity of the air barrier system.
 - D. Install all GCP products in accordance with GCP Product Data Sheets and GCP recommendations.



Window Head - Option A

Perm-A-Barrier® ULTRA

Air Barrier System

DRAWING: PWM - 002r1

SCALE: Not to scale

EFFECTIVE DATE: 12/10/23

SUPERSEDES: PWM - 002