

LIST OF DRAWINGS

LEGEND

WINDOW DETAILS AT MASONRY CLADDING

| | | |
|--------------------|---------------------------------|-------------------------|
| VPL50RS-001 | WINDOW HEAD DETAIL | MASONRY CLADDING |
| VPL50RS-002 | WINDOW JAMB DETAIL | MASONRY CLADDING |
| VPL50RS-003 | WINDOW SILL DETAIL | MASONRY CLADDING |
| VPL50RS-003 (3D-1) | WINDOW FLASHING SEQUENCE | SHEET-APPLIED FLASHING |
| VPL50RS-003 (3D-2) | SHEET-APPLIED FLASHING PRESTRIP | |
| VPL50RS-003 (3D-3) | WINDOW FLASHING SEQUENCE | LIQUID-APPLIED FLASHING |

BASE OF WALL DETAILS AT MASONRY CLADDING

| | | |
|---------------------|-------------------------------------|------------------|
| VPL50RS-004 | BASE-OF-WALL DETAIL | MASONRY CLADDING |
| VPL50RS-004 (3D-1) | BASE-OF-WALL FLASHING SEQ. (OPT. 1) | MASONRY CLADDING |
| VPL50RS-004 (ALT 1) | BASE-OF-WALL DETAIL (ALTERNATE 1) | MASONRY CLADDING |
| VPL50RS-004 (ALT 2) | BASE-OF-WALL DETAIL (ALTERNATE 2) | MASONRY CLADDING |

LEDGER DETAILS AT MASONRY CLADDING

| | | |
|--------------------|--------------------------|------------------|
| VPL50RS-005 | FLOOR LINE DETAIL | MASONRY CLADDING |
| VPL50RS-005 (3D-1) | FLOOR LINE FLASHING SEQ. | MASONRY CLADDING |
| VPL50RS-006A | MASONRY ANCHOR DETAIL | CMU SUBSTRATE |
| VPL50RS-006B | MASONRY ANCHOR DETAIL | FRAMED SUBSTRATE |

PARAPET DETAILS AT MASONRY CLADDING

| | | |
|-------------------|----------------|------------------|
| VPL50RS-007 | PARAPET DETAIL | MASONRY CLADDING |
| VPL50RS-007 (ALT) | PARAPET DETAIL | MASONRY CLADDING |

EXPANSION AND CONTROL JOINT DETAILS

| | |
|--------------|---------------------------|
| VPL50RS-008 | EXPANSION JOINT DETAIL |
| VPL50RS-009A | CONTROL JOINT DETAIL |
| VPL50RS-009B | SHEATHING JOINT TREATMENT |

WINDOW DETAILS AT NON-MASONRY CLADDING

| | | |
|-------------|--------------------|----------------------|
| VPL50RS-010 | WINDOW HEAD DETAIL | NON-MASONRY CLADDING |
| VPL50RS-011 | WINDOW JAMB DETAIL | NON-MASONRY CLADDING |
| VPL50RS-012 | WINDOW SILL DETAIL | NON-MASONRY CLADDING |

NON-MASONRY CLADDING DETAILS

| | | |
|-------------|-------------------------------|----------------------|
| VPL50RS-013 | FLOOR LINE DETAIL | NON-MASONRY CLADDING |
| VPL50RS-014 | CONCRETE STEM WALL DETAIL | NON-MASONRY CLADDING |
| VPL50RS-015 | BASE-OF-WALL DETAIL | NON-MASONRY CLADDING |
| VPL50RS-016 | INSIDE CORNER DETAIL | NON-MASONRY CLADDING |
| VPL50RS-017 | OUTSIDE CORNER DETAIL | NON-MASONRY CLADDING |
| VPL50RS-018 | KNIFEPLATE PENETRATION DETAIL | NON-MASONRY CLADDING |
| VPL50RS-019 | PENETRATION DETAILS | NON-MASONRY CLADDING |

CURTAINWALL DETAILS AT NON-MASONRY CLADDING

| | | |
|-------------|-------------------------|----------------------|
| VPL50RS-020 | CURTAINWALL HEAD DETAIL | NON-MASONRY CLADDING |
| VPL50RS-021 | CURTAINWALL JAMB DETAIL | NON-MASONRY CLADDING |
| VPL50RS-022 | CURTAINWALL SILL DETAIL | NON-MASONRY CLADDING |

DEFLECTION JOINT

| | | |
|-------------|------------------|----------------------|
| VPL50RS-023 | DEFLECTION JOINT | NON-MASONRY CLADDING |
|-------------|------------------|----------------------|

GENERAL NOTES

- Detail not suitable for all climates. Avoiding excessive moisture accumulation in exterior walls is dependent on many factors including proper placement of insulation and water, air, and vapor control layers in the wall. Confirm membranes are suitable for project specific service temperatures. For assistance with exterior wall design, consult with a building science professional.
- Install all GCP products in accordance with GCP Product Data Sheets and GCP recommendations.
- GCP products are indicated in the detail legend in **BOLDFACE** font. Detail components by others are indicated in GRAY FONT. Install components per manufacturer and project specific requirements.

*Refer to air barrier system product data sheet for acceptable self-adhered flashing products.



LIST OF DETAILS

PERM-A-BARRIER® VPL 50RS UV Stable

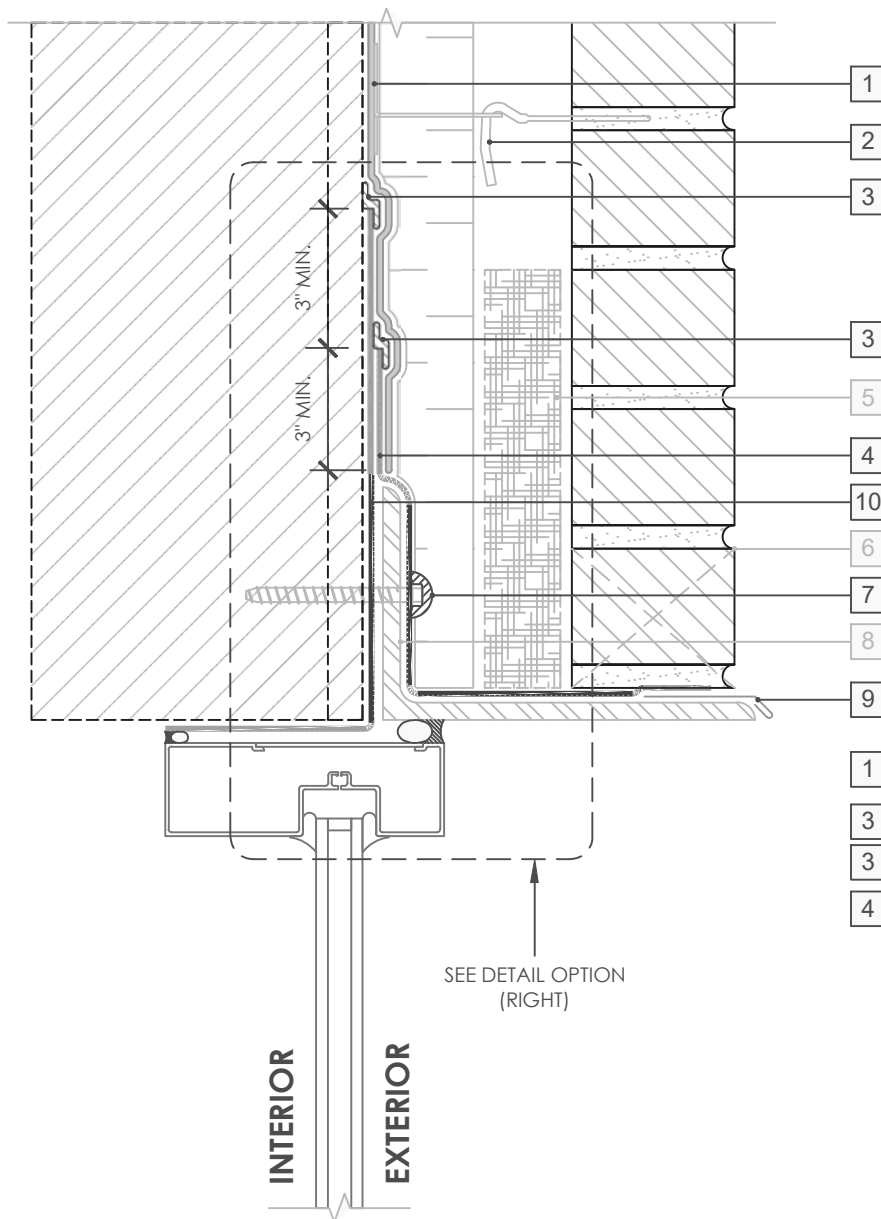
DRAWING: VPL50RS-000

SCALE: 3" = 1'

EFFECTIVE DATE: 2020.05.21

SUPERCEDES: NEW

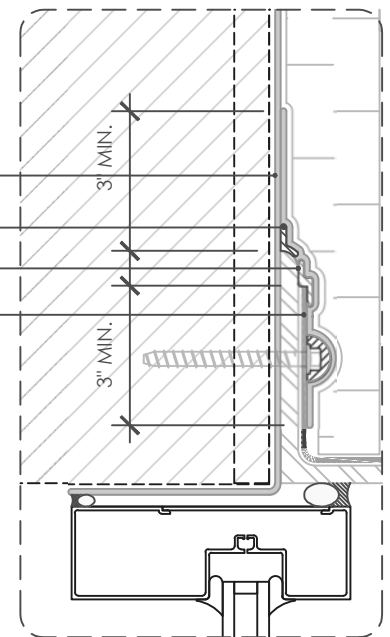
OPTION 1



LEGEND

1. **PERM-A-BARRIER® VPL 50RS UV STABLE MEMBRANE**
2. **MASONRY ANCHOR DETAILING (SEE DRAWING VPL50 RS-006)**
3. **PERM-A-BARRIER® UNIVERSAL FLASHING - 1-INCH WIDE, TOOLED BEAD**
4. **PERM-A-BARRIER® WALL FLASHING (STAR CUT AT BOLT), PRIME SUBSTRATE WHERE REQUIRED**
5. **MORTAR COLLECTION MESH**
6. **MASONRY WEEP/VENT**
7. **PERM-A-BARRIER® UNIVERSAL FLASHING AROUND FASTENER**
8. **CONTINUOUS SHELF ANGLE SUPPORT PER STRUCTURAL**
9. **SHEET METAL FLASHING PER ARCH**
10. **PERM-A-BARRIER® SELF-ADHERED FLASHING***

OPTION 2



GENERAL NOTES

1. Detail not suitable for all climates. Avoiding excessive moisture accumulation in exterior walls is dependent on many factors including proper placement of insulation and water, air, and vapor control layers in the wall. Confirm membranes are suitable for project specific service temperatures. For assistance with exterior wall design, consult with a building science professional.
2. Install all GCP products in accordance with GCP Product Data Sheets and GCP recommendations.
3. GCP products are indicated in the detail legend in **BOLDFACE** font. Detail components by others are indicated in GRAY FONT. Install components per manufacturer and project specific requirements.

*Refer to air barrier system product data sheet for acceptable self-adhered flashing products.



WINDOW HEAD DETAIL - MASONRY CLADDING

PERM-A-BARRIER®
VPL 50RS UV STABLE

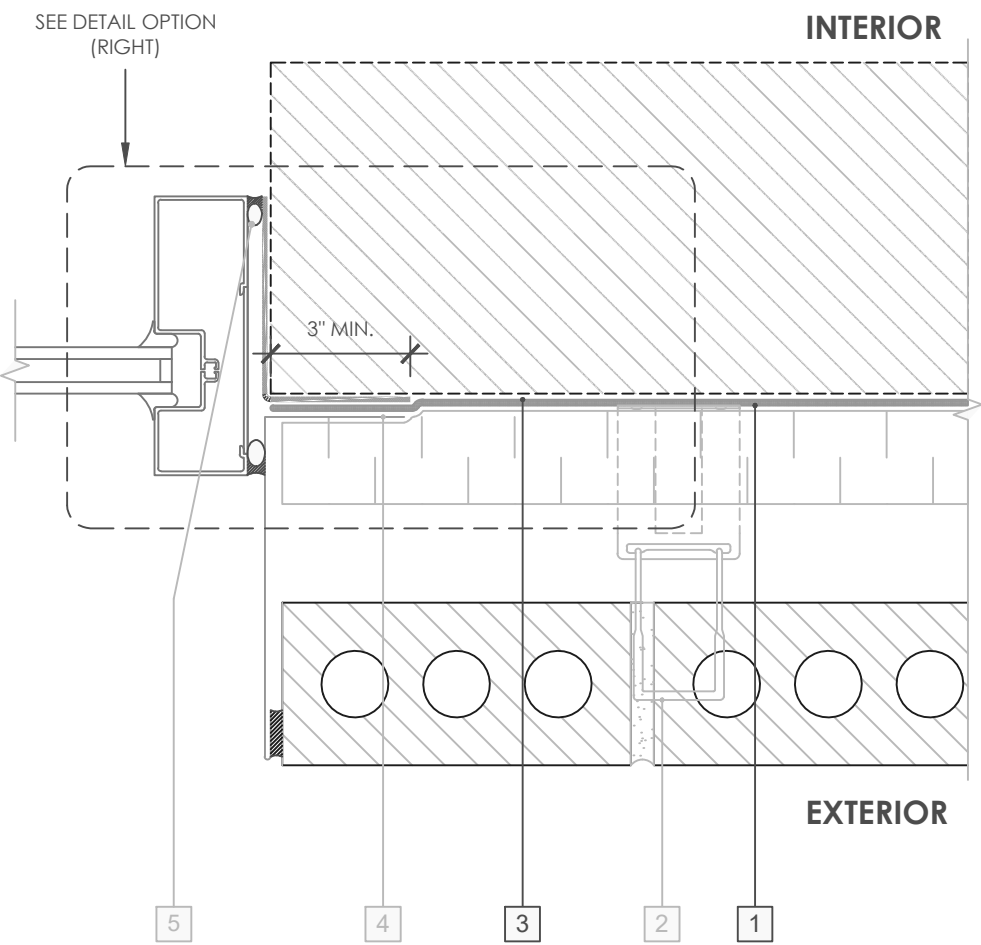
DRAWING: VPL50RS-001

SCALE: 3" = 1'

EFFECTIVE DATE: 2023.04.10

SUPERCEDES: NEW

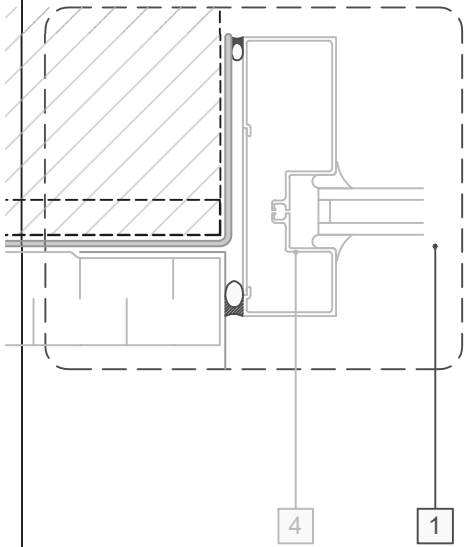
OPTION 1



LEGEND

- 1. **PERM-A-BARRIER® VPL 50RS UV STABLE MEMBRANE**
- 2. **MASONRY ANCHOR DETAILING (SEE DRAWING VPL 50RS UV STABLE-006)**
- 3. **PERM-A-BARRIER® SELF-ADHERED FLASHING* - PRIME SUBSTRATE WHERE REQUIRED**
- 4. SHEET METAL FLASHING PER ARCH
- 5. INTERIOR AIR BARRIER SEALANT OVER BACKER ROD AT WINDOW PERIMETER

OPTION 2



GENERAL NOTES

- 1. Detail not suitable for all climates. Avoiding excessive moisture accumulation in exterior walls is dependent on many factors including proper placement of insulation and water, air, and vapor control layers in the wall. Confirm membranes are suitable for project specific service temperatures. For assistance with exterior wall design, consult with a building science professional.
- 2. Install all GCP products in accordance with GCP Product Data Sheets and GCP recommendations.
- 3. GCP products are indicated in the detail legend in **BOLDFACE** font. Detail components by others are indicated in GRAY FONT. Install components per manufacturer and project specific requirements.

*Refer to air barrier system product data sheet for acceptable self-adhered flashing products.



WINDOW JAMB DETAIL -
MASONRY CLADDING

PERM-A-BARRIER® VPL 50RS UV STABLE

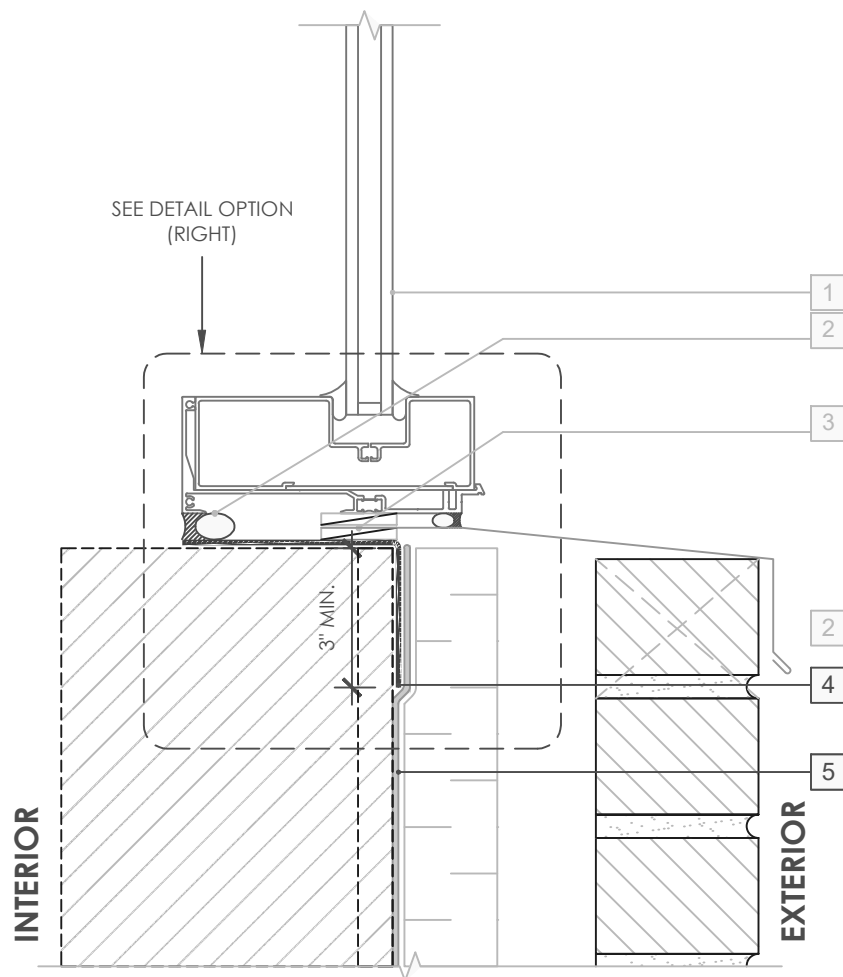
DRAWING: VPL50RS-002

SCALE: 3" = 1'

EFFECTIVE DATE: 2020.05.21

SUPERCEDES: NEW

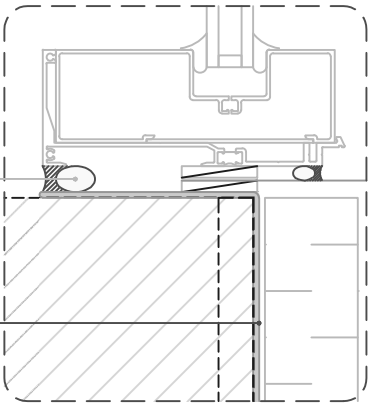
OPTION 1



LEGEND

- 1. NON-FLANGED WINDOW SYSTEM
- 2. INTERIOR AIR BARRIER SEALANT OVER BACKER ROD AT WINDOW PERIMETER
- 3. SHEET METAL FLASHING - SANDWICHED BETWEEN INTERMITTENT SHIMS
- 4. **PERM-A-BARRIER® SELF-ADHERED FLASHING* - PRIME SUBSTRATE WHERE REQUIRED**
- 5. **PERM-A-BARRIER® VPL 50RS UV STABLE MEMBRANE**

OPTION 2



GENERAL NOTES

- 1. Detail not suitable for all climates. Avoiding excessive moisture accumulation in exterior walls is dependent on many factors including proper placement of insulation and water, air, and vapor control layers in the wall. Confirm membranes are suitable for project specific service temperatures. For assistance with exterior wall design, consult with a building science professional.
- 2. Install all GCP products in accordance with GCP Product Data Sheets and GCP recommendations.
- 3. GCP products are indicated in the detail legend in **BOLDFACE** font. Detail components by others are indicated in GRAY FONT. Install components per manufacturer and project specific requirements.

*Refer to air barrier system product data sheet for acceptable self-adhered flashing products.



WINDOW SILL DETAIL -
MASONRY CLADDING

PERM-A-BARRIER® VPL 50RS UV STABLE

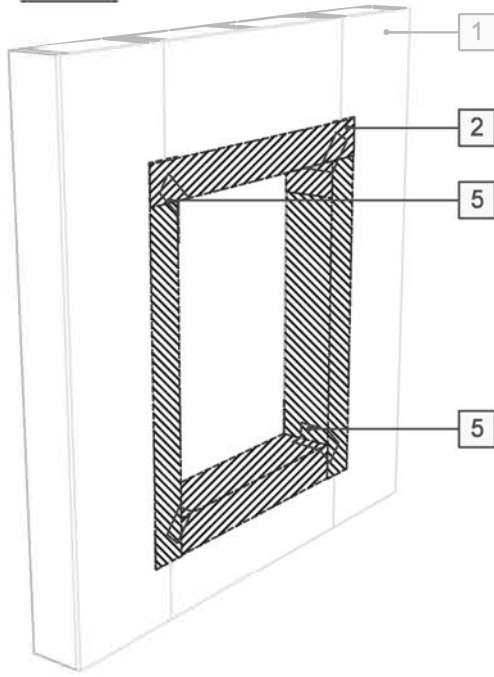
DRAWING: VPL50RS-003

SCALE: 3" = 1'

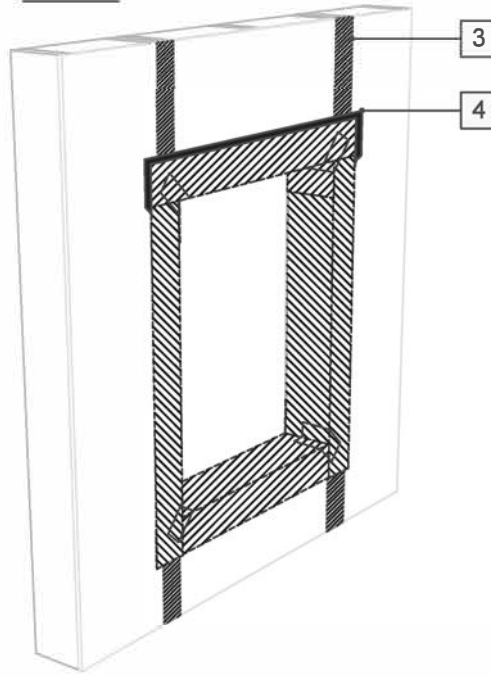
EFFECTIVE DATE: 2023.04.10

SUPERCEDES: NEW

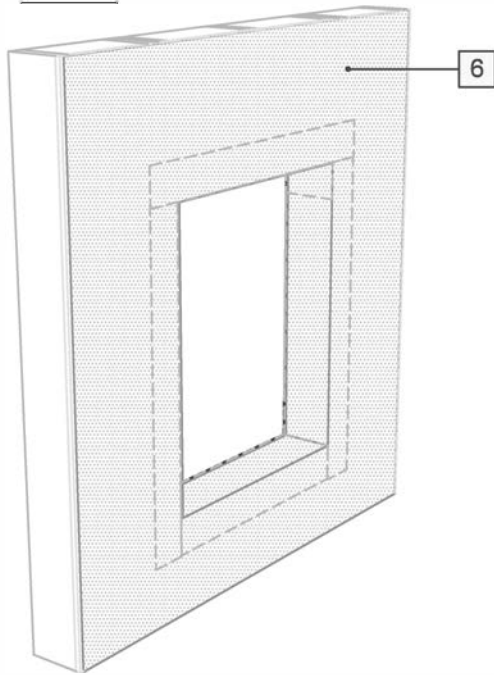
STEP 1



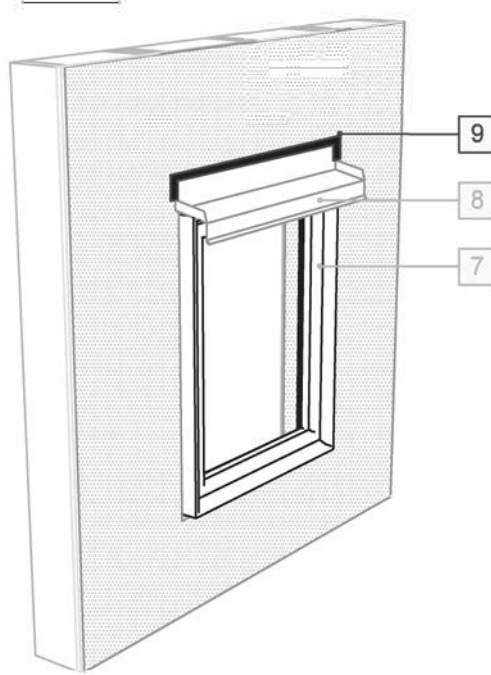
STEP 2



STEP 3



STEP 4



LEGEND

1. SHEATHING SUBSTRATE
2. **PERM-A-BARRIER®** DETAIL MEMBRANE, NPS DETAIL MEMBRANE, ALUMINUM FLASHING, OR WALL FLASHING - PRIME SUBSTRATE WHERE REQUIRED (SEE DRAWING VPL50RS-003 (3D-2) FOR MORE INFORMATION)
3. JOINT TREATMENT PER DETAIL VPL50RS-009B
4. **PERM-A-BARRIER®** S100 SEALANT OR **PERM-A-BARRIER®** LIQUID FLASHING - 1-INCH WIDE TROWELED BEAD
5. CORNER PATCH
6. **PERM-A-BARRIER®** VPL 50RS UV STABLE MEMBRANE
7. WINDOW PER ARCH
8. SHEET METAL HEAD FLASHING PER ARCH.
9. **PERM-A-BARRIER®** S100 SEALANT OR **PERM-A-BARRIER®** LIQUID FLASHING

NOTE

- CONTINUOUS AIR AND WATER SEAL AT PERIMETER OF FENESTRATION, FENESTRATION ATTACHMENT, AND DRAINAGE OF ROUGH OPENING TO BE PER PROJECT SPECIFIC REQUIREMENTS
- SEAL ALL NON-WATER SHEDDING EDGES WITH ACCEPTABLE SEALANT

GENERAL NOTES

1. Detail not suitable for all climates. Avoiding excessive moisture accumulation in exterior walls is dependent on many factors including proper placement of insulation and water, air, and vapor control layers in the wall. Confirm membranes are suitable for project specific service temperatures. For assistance with exterior wall design, consult with a building science professional.
2. Install all GCP products in accordance with GCP Product Data Sheets and GCP recommendations.
3. GCP products are indicated in the detail legend in **BOLDFACE** font. Detail components by others are indicated in GRAY FONT. Install components per manufacturer and project specific requirements.

*Refer to air barrier system product data sheet for acceptable self-adhered flashing products.



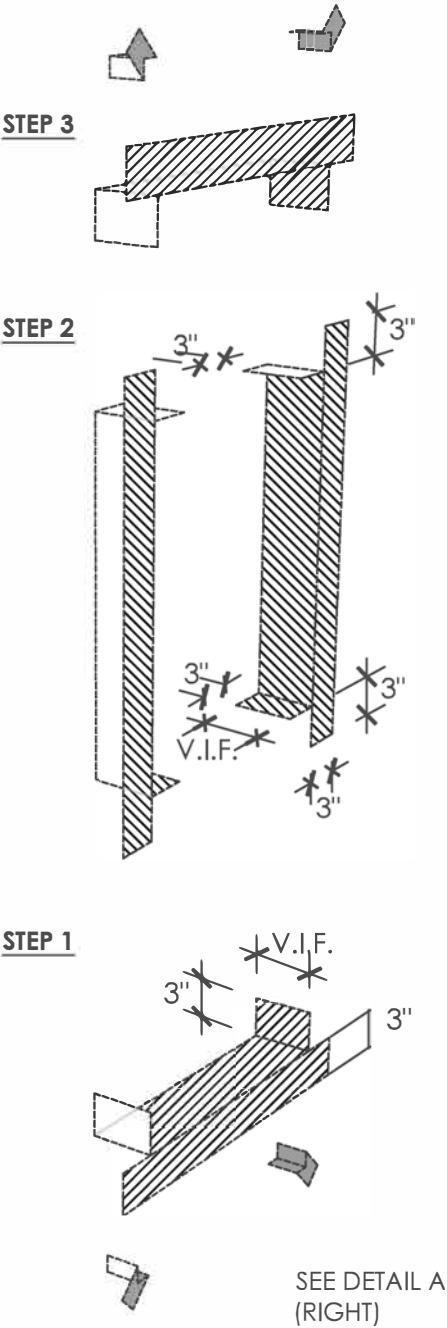
WINDOW FLASHING SEQUENCE - SHEET-APPLIED FLASHING

PERM-A-BARRIER® VPL 50RS UV STABLE

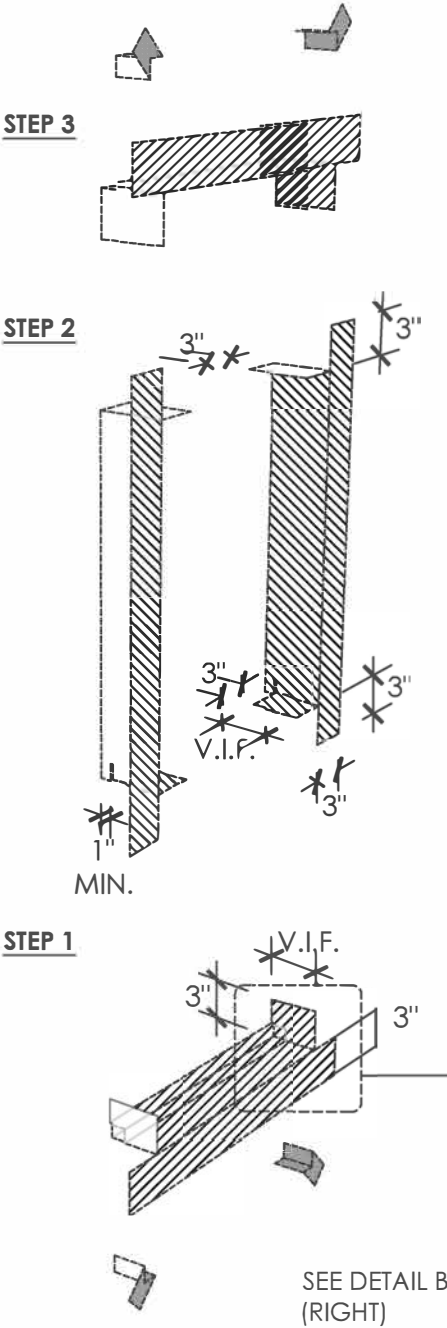
| | |
|-----------------|--------------------|
| DRAWING: | VPL50RS-003 (3D-1) |
| SCALE: | 3" = 1' |
| EFFECTIVE DATE: | 2020.05.21 |
| SUPERCEDES: | VPL50-006-A |

WINDOW PRESTRIP VARIATIONS

A. WITHOUT BACK DAM ANGLE



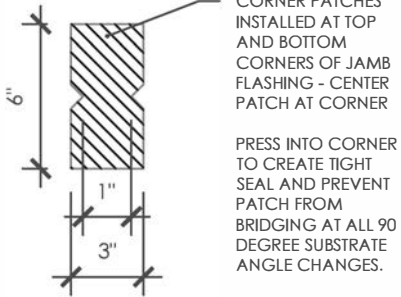
B. WITH BACK DAM ANGLE



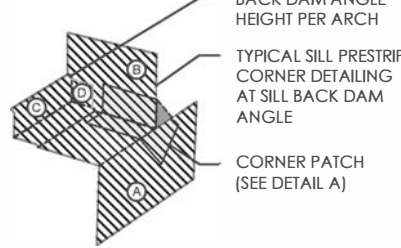
LEGEND

- WINDOW PRESTRIP PERM-A-BARRIER®
DETAIL MEMBRANE, NPS DETAIL
MEMBRANE, ALUMINUM FLASHING,
OR WALL FLASHING
- PRIME SUBSTRATE WHERE REQUIRED

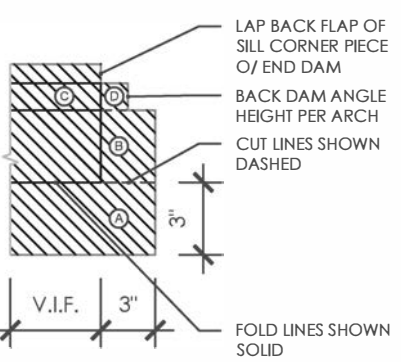
DETAIL A



DETAIL B



FOLDING TEMPLATE



GENERAL NOTES

1. Detail not suitable for all climates. Avoiding excessive moisture accumulation in exterior walls is dependent on many factors including proper placement of insulation and water, air, and vapor control layers in the wall. Confirm membranes are suitable for project specific service temperatures. For assistance with exterior wall design, consult with a building science professional.
2. Install all GCP products in accordance with GCP Product Data Sheets and GCP recommendations.
3. GCP products are indicated in the detail legend in **BOLDFACE** font. Detail components by others are indicated in GRAY FONT. Install components per manufacturer and project specific requirements.

*Refer to air barrier system product data sheet for acceptable self-adhered flashing products.



SHEET-APPLIED FLASHING PRESTRIP

PERM-A-BARRIER® VPL 50RS UV STABLE

DRAWING: VPL50RS-003 (3D-2)

SCALE: 3" = 1'

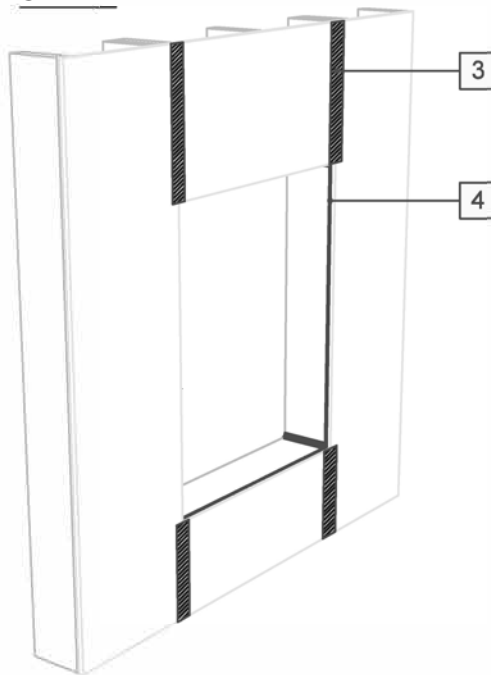
EFFECTIVE DATE: 2020.05.21

SUPERCEDES: VPL50-006-B

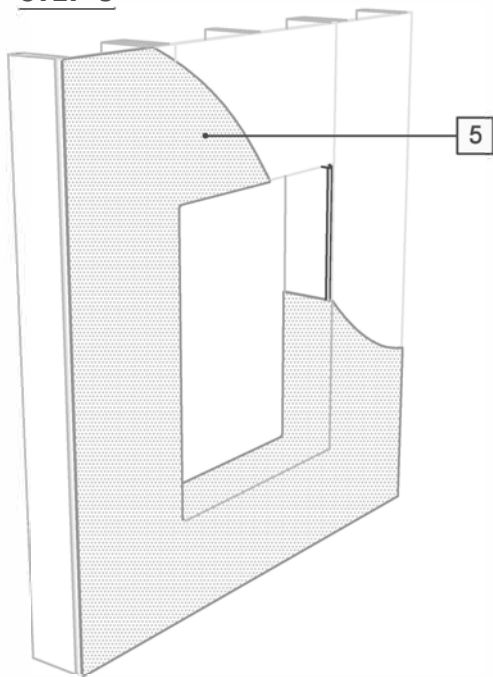
STEP 1



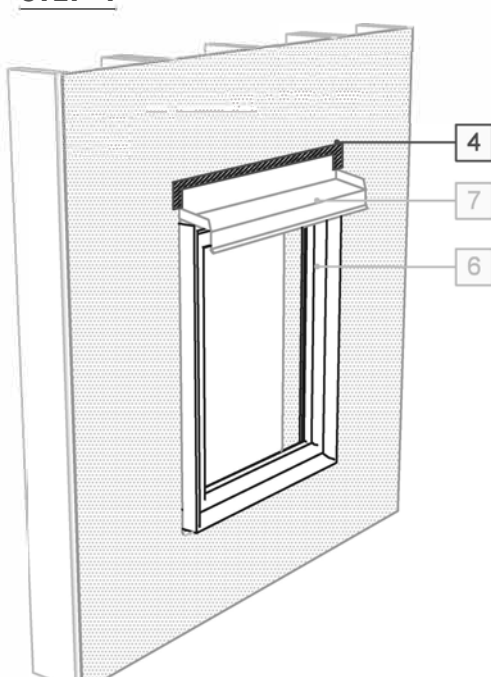
STEP 2



STEP 3



STEP 4



LEGEND

1. SHEATHING SUBSTRATE
2. **PERM-A-BARRIER® PRIMER AT ALL EXPOSED GYPSUM SHEATHING EDGES**
3. **JOINT TREATMENT PER DETAIL VPL50RS-009B**
4. **PERM-A-BARRIER® S100 SEALANT OR PERM-A-BARRIER® LIQUID FLASHING AT ALL TRANSITIONS BETWEEN FRAMING AND SHEATHING**
5. **PERM-A-BARRIER® VPL 50RS UV STABLE MEMBRANE**
6. WINDOW PER ARCH
7. SHEET METAL HEAD FLASHING PER ARCH.

NOTE

- CONTINUOUS AIR AND WATER SEAL AT PERIMETER OF FENESTRATION, FENESTRATION ATTACHMENT, AND DRAINAGE OF ROUGH OPENING TO BE PER PROJECT SPECIFIC REQUIREMENTS

GENERAL NOTES

1. Detail not suitable for all climates. Avoiding excessive moisture accumulation in exterior walls is dependent on many factors including proper placement of insulation and water, air, and vapor control layers in the wall. Confirm membranes are suitable for project specific service temperatures. For assistance with exterior wall design, consult with a building science professional.
2. Install all GCP products in accordance with GCP Product Data Sheets and GCP recommendations.
3. GCP products are indicated in the detail legend in **BOLDFACE** font. Detail components by others are indicated in GRAY FONT. Install components per manufacturer and project specific requirements.

*Refer to air barrier system product data sheet for acceptable self-adhered flashing products.



WINDOW FLASHING SEQUENCE - LIQUID-APPLIED FLASHING

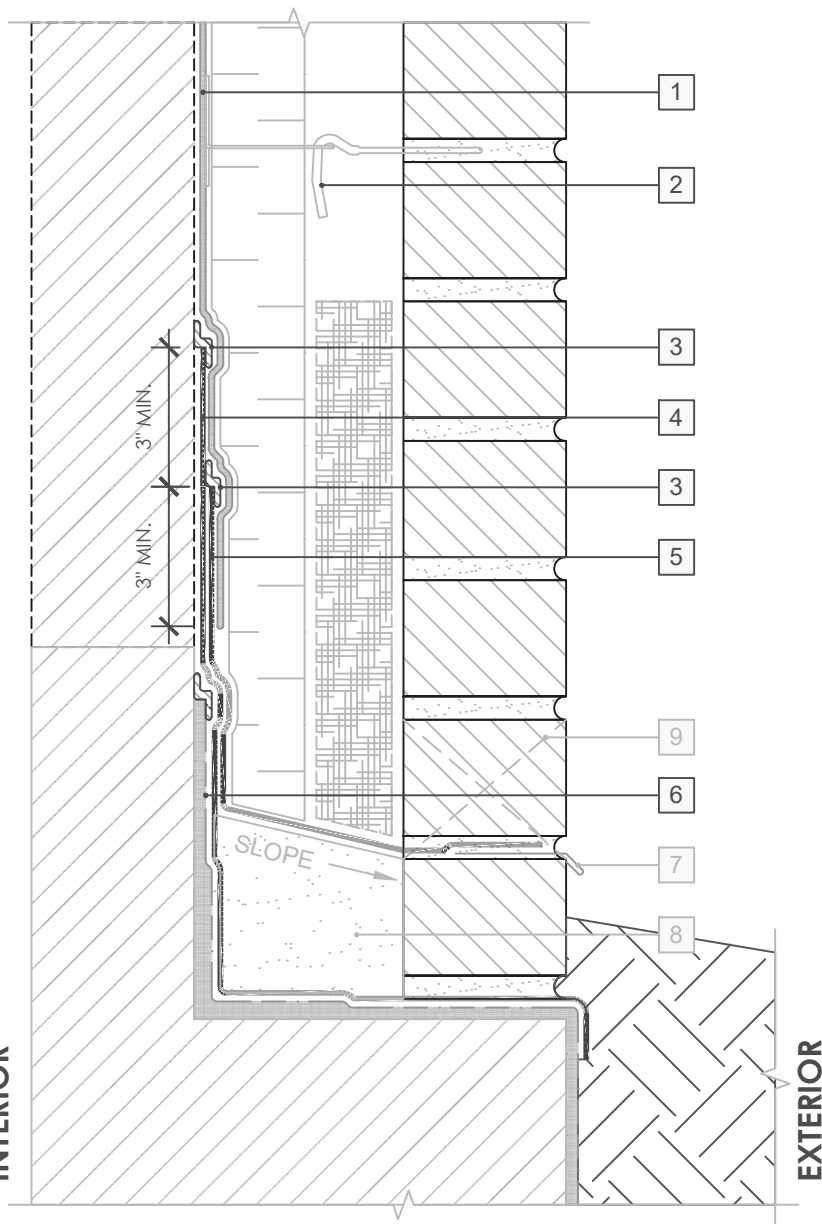
PERM-A-BARRIER® VPL 50RS UV STABLE

DRAWING: VPL50RS-003 (3D-3)

SCALE: 3" = 1'

EFFECTIVE DATE: 2020.05.21

SUPERCEDES: VPL50-006-C



SEE VPL50RS-004 (3D-1) FOR 3D DETAIL

LEGEND

1. **PERM-A-BARRIER® VPL 50RS UV STABLE MEMBRANE**
2. **MASONRY ANCHOR DETAILING (SEE DRAWING VPL50RS-006)**
3. **PERM-A-BARRIER® UNIVERSAL FLASHING - 1-INCH WIDE, TOOLED BEAD**
4. **PERM-A-BARRIER® SELF-ADHERED FLASHING* - PRIME SUBSTRATE WHERE REQUIRED**
5. **PERM-A-BARRIER® WALL FLASHING - PRIME SUBSTRATE WHERE REQUIRED**
6. **BELOW GRADE WATERPROOFING SYSTEM - SEE GCPAT.COM**
7. SHEET METAL FLASHING PER ARCH
8. GROUT SOLID TO HEIGHT OF CURB - SLOPE TOP
9. MASONRY WEEP/VENT

GENERAL NOTES

1. Detail not suitable for all climates. Avoiding excessive moisture accumulation in exterior walls is dependent on many factors including proper placement of insulation and water, air, and vapor control layers in the wall. Confirm membranes are suitable for project specific service temperatures. For assistance with exterior wall design, consult with a building science professional.
2. Install all GCP products in accordance with GCP Product Data Sheets and GCP recommendations.
3. GCP products are indicated in the detail legend in **BOLDFACE** font. Detail components by others are indicated in GRAY FONT. Install components per manufacturer and project specific requirements.

*Refer to air barrier system product data sheet for acceptable self-adhered flashing products.



BASE-OF-WALL DETAIL - MASONRY CLADDING

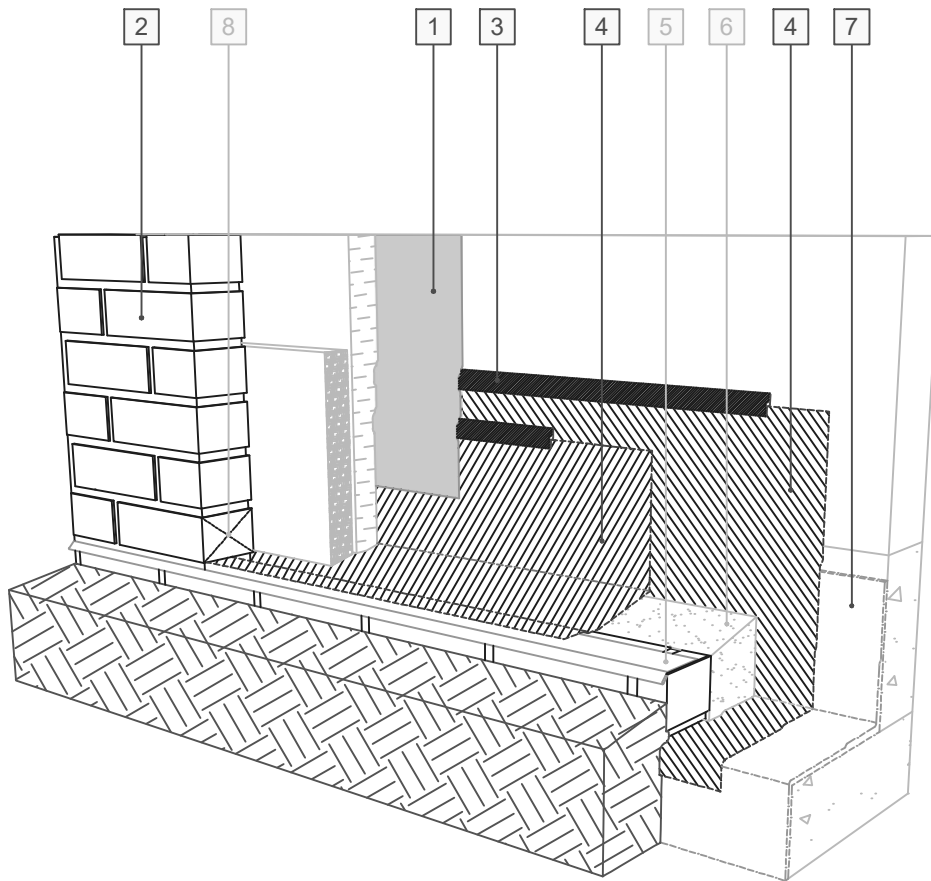
PERM-A-BARRIER® VPL 50RS UV STABLE

DRAWING: VPL50RS-004

SCALE: 3" = 1'

EFFECTIVE DATE: 2023.04.10

SUPERCEDES: NEW



LEGEND

1. **PERM-A-BARRIER® VPL 50RS UV STABLE MEMBRANE**
2. **MASONRY ANCHOR DETAILING (SEE DRAWING VPL50RS-006)**
3. **PERM-A-BARRIER® UNIVERSAL FLASHING - 1-INCH WIDE, TOOLED BEAD**
4. **PERM-A-BARRIER® WALL FLASHING - PRIME SUBSTRATE WHERE REQUIRED**
5. **SHEET METAL FLASHING PER ARCH**
6. **GROUT SOLID TO HEIGHT OF CURB - SLOPE TOP**
7. **BELOW GRADE WATERPROOFING SYSTEM - SEE GCPAT.COM**
8. **MASONRY WEEP/VENT**

SEE VPL50RS-004 (OPTION 1) FOR 2D DETAIL

GENERAL NOTES

1. Detail not suitable for all climates. Avoiding excessive moisture accumulation in exterior walls is dependent on many factors including proper placement of insulation and water, air, and vapor control layers in the wall. Confirm membranes are suitable for project specific service temperatures. For assistance with exterior wall design, consult with a building science professional.
2. Install all GCP products in accordance with GCP Product Data Sheets and GCP recommendations.
3. GCP products are indicated in the detail legend in **BOLDFACE** font. Detail components by others are indicated in GRAY FONT. Install components per manufacturer and project specific requirements.

*Refer to air barrier system product data sheet for acceptable self-adhered flashing products.

BASE-OF-WALL FLASHING SEQUENCE (OPTION 1)

PERM-A-BARRIER® VPL 50RS UV STABLE

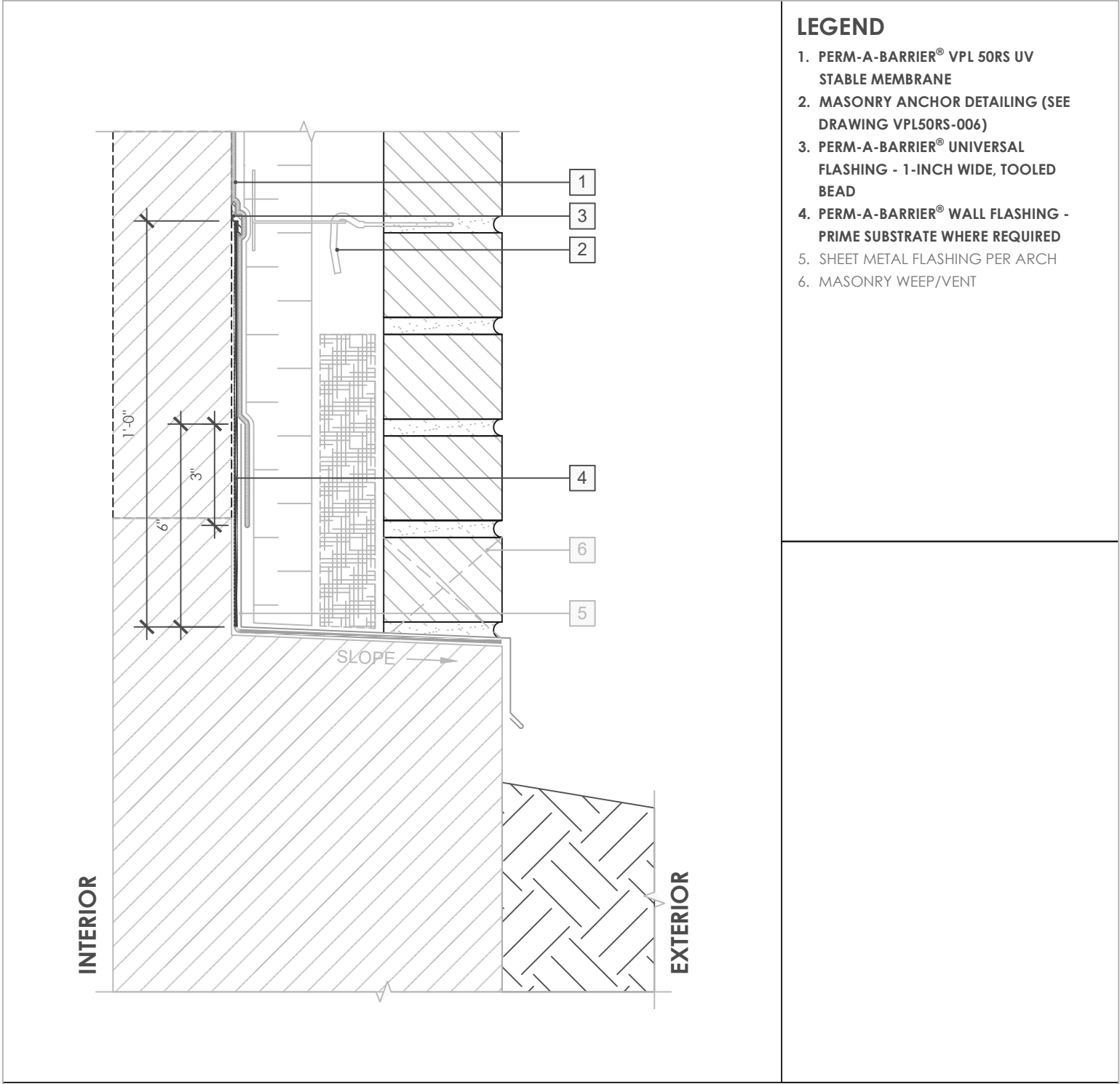
DRAWING: VPL50RS-004 (3D-1)

SCALE: 3" = 1'

EFFECTIVE DATE: 2022.04.25

SUPERCEDES: NEW




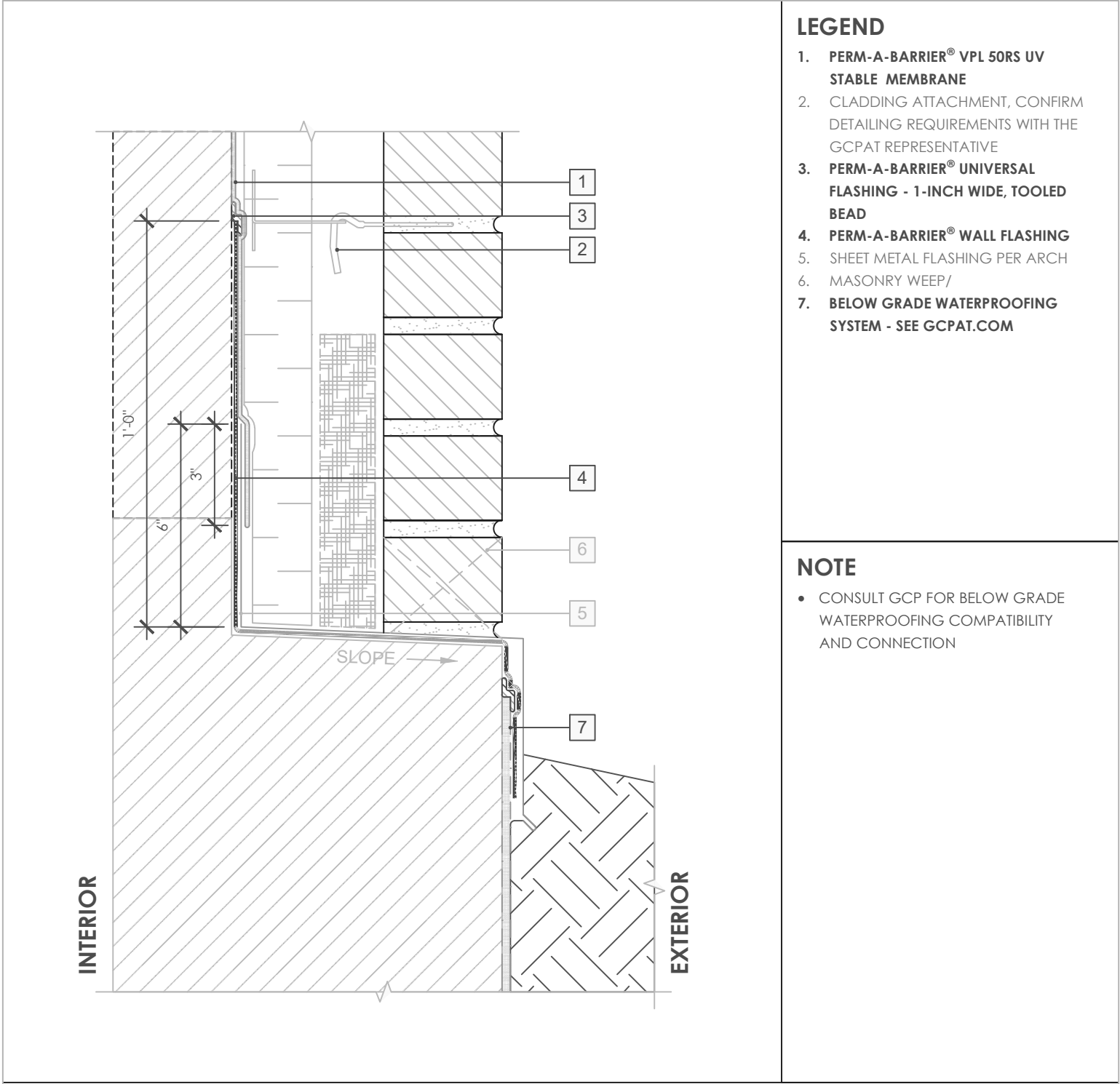


GENERAL NOTES

1. Detail not suitable for all climates. Avoiding excessive moisture accumulation in exterior walls is dependent on many factors including proper placement of insulation and water, air, and vapor control layers in the wall. Confirm membranes are suitable for project specific service temperatures. For assistance with exterior wall design, consult with a building science professional.
2. Install all GCP products in accordance with GCP Product Data Sheets and GCP recommendations.
3. GCP products are indicated in the detail legend in **BOLDFACE** font. Detail components by others are indicated in GRAY FONT. Install components per manufacturer and project specific requirements.

*Refer to air barrier system product data sheet for acceptable self-adhered flashing products.

| | | | |
|--|--|-----------------|---------------------|
|  | BASE-OF-WALL DETAIL - (ALTERNATE 1) | DRAWING: | VPL50RS-004 (ALT 1) |
| | | SCALE: | 3" = 1' |
| | PERM-A-BARRIER® VPL 50RS UV STABLE | EFFECTIVE DATE: | 2023.04.10 |
| | | SUPERCEDES: | NEW |

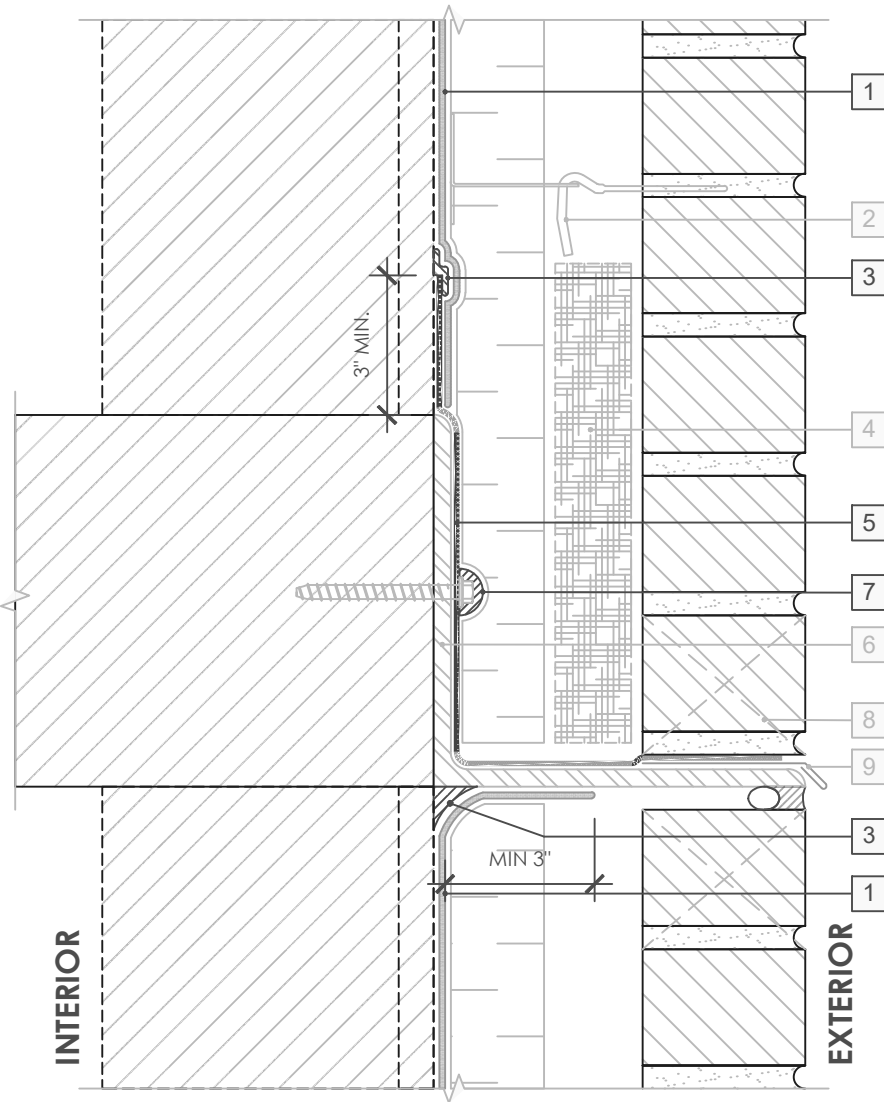


GENERAL NOTES

- Detail not suitable for all climates. Avoiding excessive moisture accumulation in exterior walls is dependent on many factors including proper placement of insulation and water, air, and vapor control layers in the wall. Confirm membranes are suitable for project specific service temperatures. For assistance with exterior wall design, consult with a building science professional.
- Install all GCP products in accordance with GCP Product Data Sheets and GCP recommendations.
- GCP products are indicated in the detail legend in **BOLDFACE** font. Detail components by others are indicated in GRAY FONT. Install components per manufacturer and project specific requirements.

*Refer to air barrier system product data sheet for acceptable self-adhered flashing products.

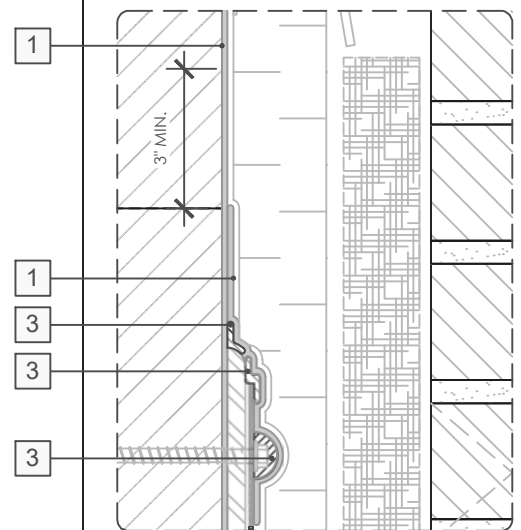
| | | | |
|--|--|-----------------|---------------------|
| | BASE-OF-WALL DETAIL - (ALTERNATE 2) | DRAWING: | VPL50RS-004 (ALT 2) |
| | | SCALE: | 3" = 1' |
| | PERM-A-BARRIER® VPL 50RS UV STABLE | EFFECTIVE DATE: | 2023.04.10 |
| | | SUPERCEDES: | NEW |



LEGEND

1. **PERM-A-BARRIER® VPL 50RS UV STABLE MEMBRANE**
2. **MASONRY ANCHOR DETAILING (SEE DRAWING VPL50RS-006)**
3. **PERM-A-BARRIER® UNIVERSAL FLASHING - 1-INCH WIDE, TOOLED BEAD**
4. **MORTAR COLLECTION MESH**
5. **PERM-A-BARRIER® WALL FLASHING (STAR CUT AT BOLT) - PRIME SUBSTRATE WHERE REQUIRED**
6. **CONTINUOUS SHELF ANGLE SUPPORT PER STRUCTURAL**
7. **PERM-A-BARRIER® UNIVERSAL FLASHING AROUND FASTENER**
8. **MASONRY WEEP/VENT**
9. **SHEET METAL FLASHING PER ARCH**
10. **PERM-A-BARRIER® UNIVERSAL FLASHING**

OPTION 2



SEE VPL50RS-005 (3D-2) FOR 3D DETAIL

GENERAL NOTES

1. Detail not suitable for all climates. Avoiding excessive moisture accumulation in exterior walls is dependent on many factors including proper placement of insulation and water, air, and vapor control layers in the wall. Confirm membranes are suitable for project specific service temperatures. For assistance with exterior wall design, consult with a building science professional.
2. Install all GCP products in accordance with GCP Product Data Sheets and GCP recommendations.
3. GCP products are indicated in the detail legend in **BOLDFACE** font. Detail components by others are indicated in GRAY FONT. Install components per manufacturer and project specific requirements.

*Refer to air barrier system product data sheet for acceptable self-adhered flashing products.



FLOOR LINE DETAIL - MASONRY CLADDING

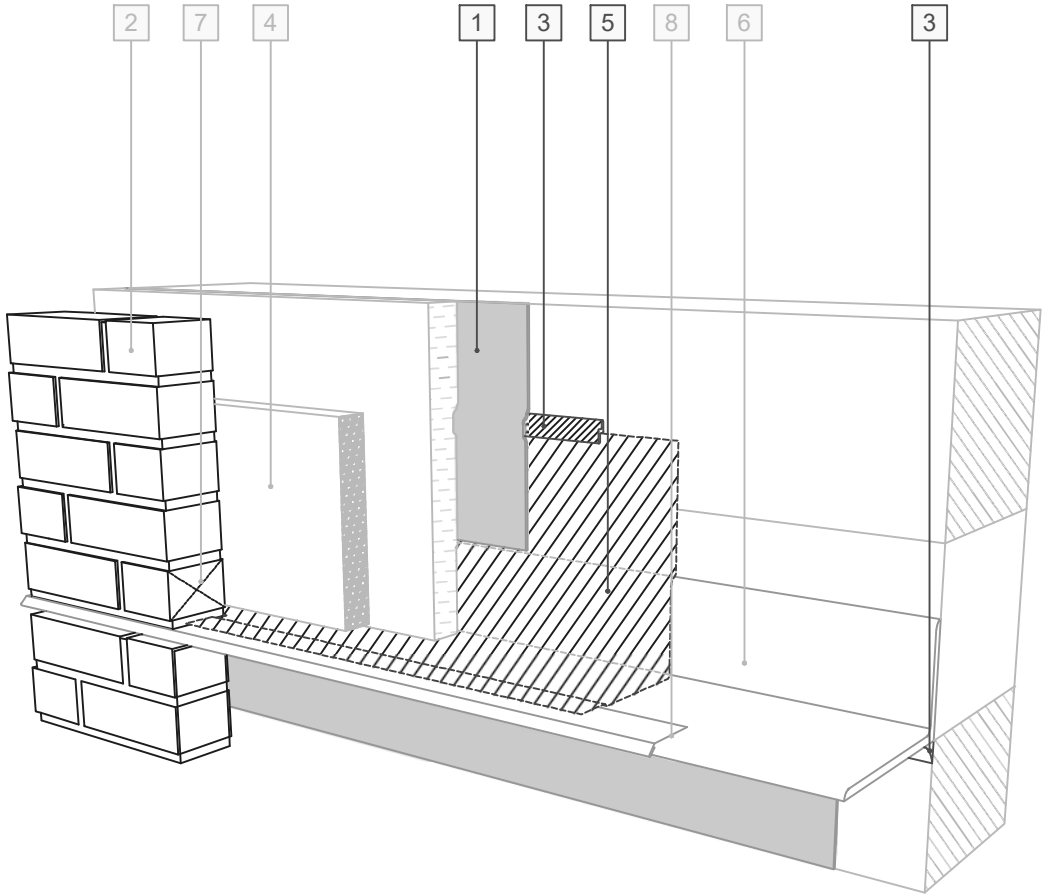
PERM-A-BARRIER® VPL 50RS UV STABLE

DRAWING: VPL 50 RS UV 005

SCALE: 3" = 1'

EFFECTIVE DATE: 2023.04.10

SUPERCEDES: VPL50-001




SEE VPL 50RS-005 (OPTION 1) FOR 2D DETAIL

- LEGEND**
- 1. **PERM-A-BARRIER® VPL 50RS UV STABLE MEMBRANE**
 - 2. **MASONRY ANCHOR DETAILING (SEE DRAWING VPL 50RS-006)**
 - 3. **PERM-A-BARRIER® UNIVERSAL FLASHING - 1-INCH WIDE, TOOLED BEAD**
 - 4. MORTAR COLLECTION MESH
 - 5. **PERM-A-BARRIER® WALL FLASHING - PRIME SUBSTRATE WHERE REQUIRED**
 - 6. CONTINUOUS SHELF ANGLE SUPPORT PER STRUCTURAL
 - 7. MASONRY WEEP/VENT
 - 8. SHEET METAL FLASHING PER ARCH

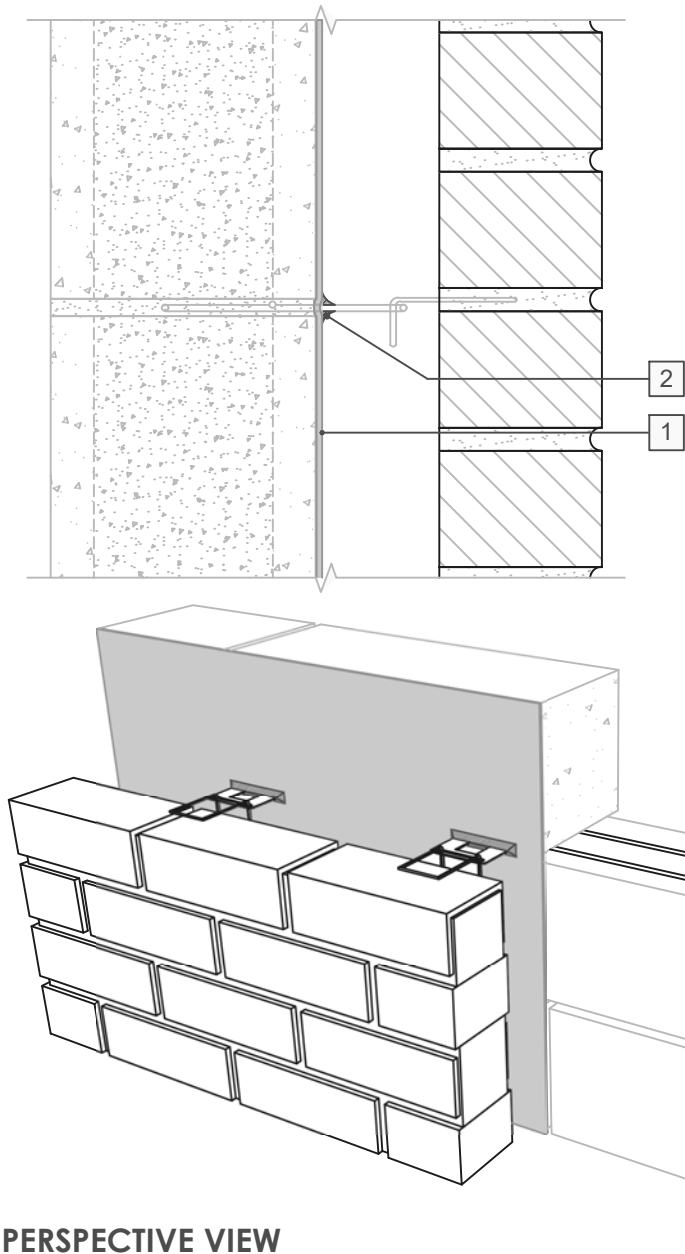
GENERAL NOTES

- 1. Detail not suitable for all climates. Avoiding excessive moisture accumulation in exterior walls is dependent on many factors including proper placement of insulation and water, air, and vapor control layers in the wall. Confirm membranes are suitable for project specific service temperatures. For assistance with exterior wall design, consult with a building science professional.
- 2. Install all GCP products in accordance with GCP Product Data Sheets and GCP recommendations.
- 3. GCP products are indicated in the detail legend in **BOLDFACE** font. Detail components by others are indicated in GRAY FONT. Install components per manufacturer and project specific requirements.

*Refer to air barrier system product data sheet for acceptable self-adhered flashing products.

| | | |
|--|--|--------------------------------|
|  | FLOOR LINE FLASHING SEQUENCE - MASONRY CLADDING | DRAWING: VPL 50RS UV-005 ALT 1 |
| | | SCALE: 3" = 1' |
| | PERM-A-BARRIER® VPL 50RS UV STABLE | EFFECTIVE DATE: 2023.04.10 |
| | | SUPERCEDES: NEW |

SECTION VIEW



PERSPECTIVE VIEW

LEGEND

- 1. PERM-A-BARRIER® VPL 50RS UV STABLE MEMBRANE
- 2. PERM-A-BARRIER® UNIVERSAL FLASHING FILLET SURROUNDING WIRE TIE PENETRATION

NOTE

- ALL CMU JOINTS TO BE STRUCK FULL AND FLUSH

GENERAL NOTES

- 1. Detail not suitable for all climates. Avoiding excessive moisture accumulation in exterior walls is dependent on many factors including proper placement of insulation and water, air, and vapor control layers in the wall. Confirm membranes are suitable for project specific service temperatures. For assistance with exterior wall design, consult with a building science professional.
- 2. Install all GCP products in accordance with GCP Product Data Sheets and GCP recommendations.
- 3. GCP products are indicated in the detail legend in **BOLDFACE** font. Detail components by others are indicated in GRAY FONT. Install components per manufacturer and project specific requirements.

*Refer to air barrier system product data sheet for acceptable self-adhered flashing products.

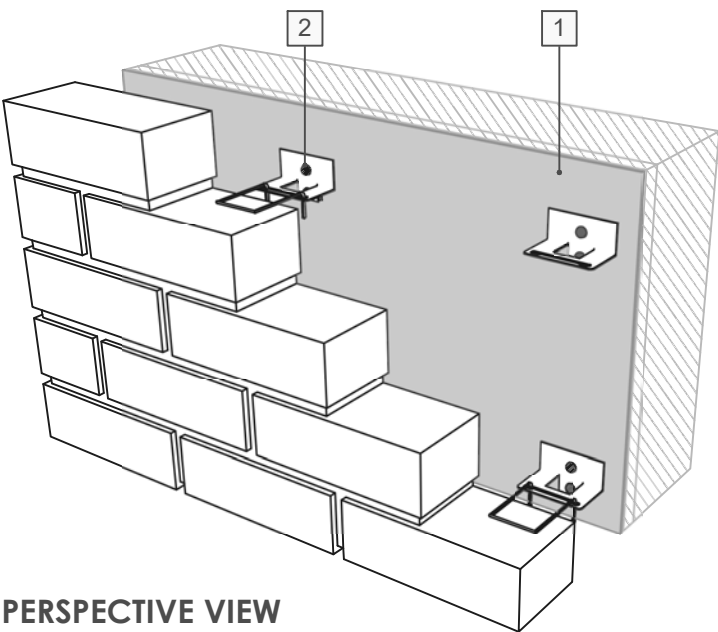
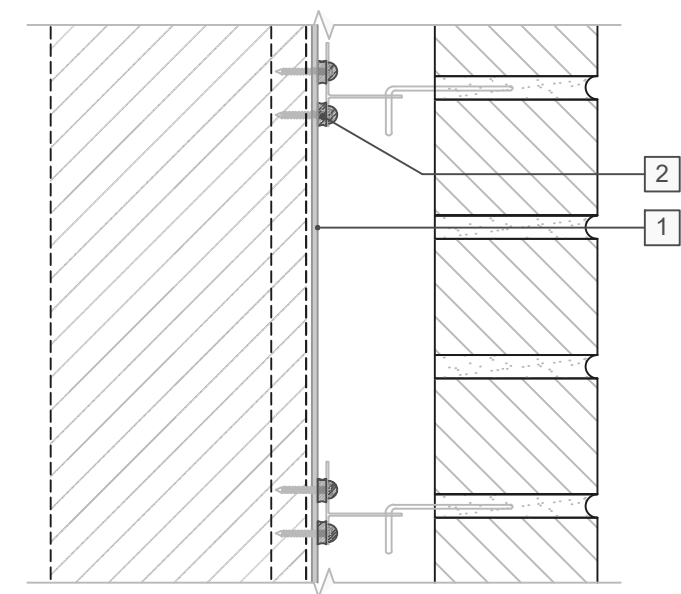


MASONRY ANCHOR OPTION -
CMU SUBSTRATE

PERM-A-BARRIER® VPL 50RS UV STABLE

| | |
|-----------------|--------------|
| DRAWING: | VPL50RS-006A |
| SCALE: | 3" = 1' |
| EFFECTIVE DATE: | 2023.04.10 |
| SUPERCEDES: | NEW |

SECTION VIEW



PERSPECTIVE VIEW

LEGEND

1. PERM-A-BARRIER® VPL 50RS UV STABLE MEMBRANE
2. PERM-A-BARRIER® UNIVERSAL FLASHING AROUND FASTENER AT FRONT AND BACK FACE OF MASONRY ANCHOR

GENERAL NOTES

1. Detail not suitable for all climates. Avoiding excessive moisture accumulation in exterior walls is dependent on many factors including proper placement of insulation and water, air, and vapor control layers in the wall. Confirm membranes are suitable for project specific service temperatures. For assistance with exterior wall design, consult with a building science professional.
2. Install all GCP products in accordance with GCP Product Data Sheets and GCP recommendations.
3. GCP products are indicated in the detail legend in **BOLDFACE** font. Detail components by others are indicated in GRAY FONT. Install components per manufacturer and project specific requirements.

*Refer to air barrier system product data sheet for acceptable self-adhered flashing products.

MASONRY ANCHOR OPTION -
FRAMED SUBSTRATE

PERM-A-BARRIER® VPL 50RS UV STABLE

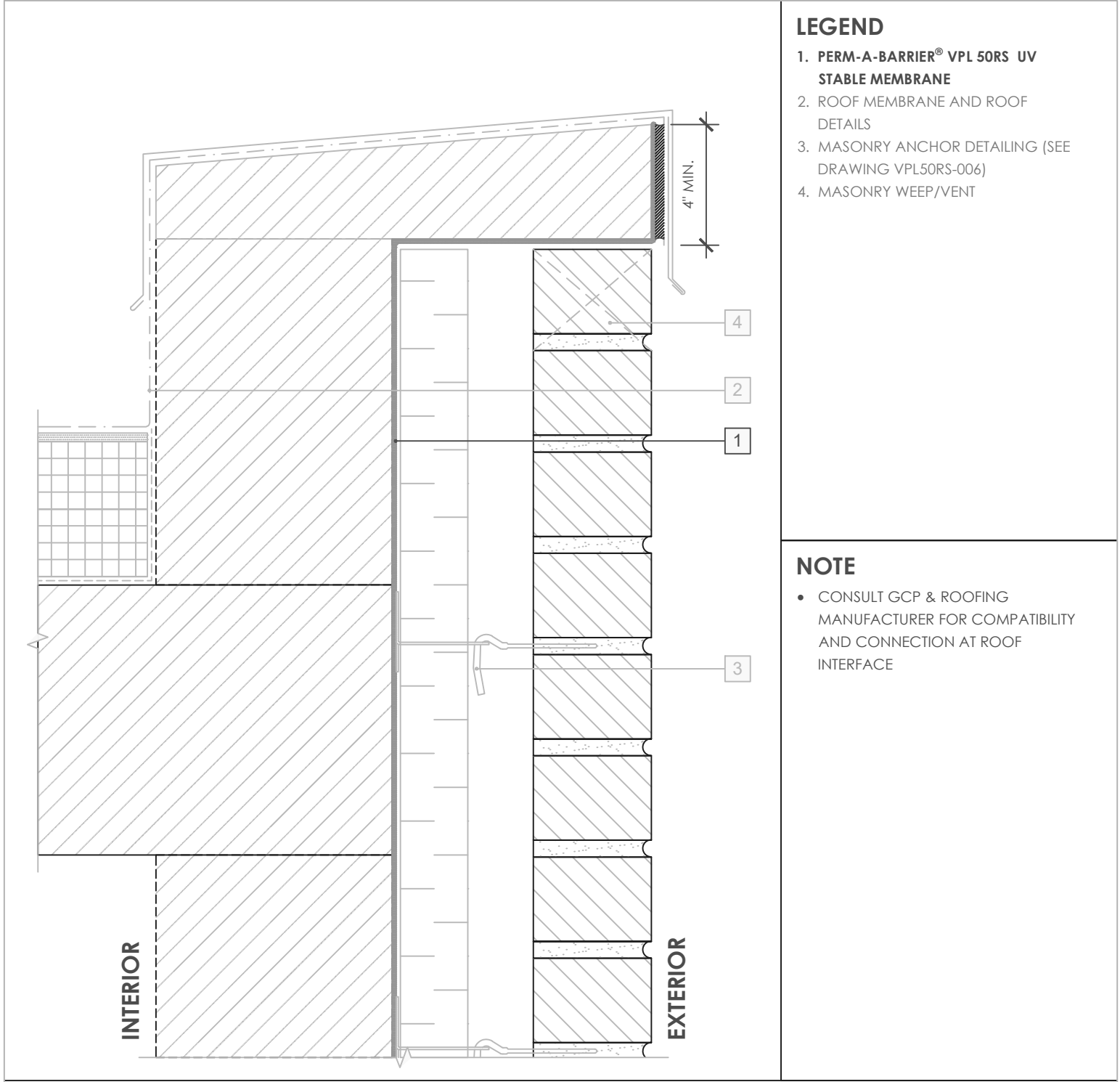
DRAWING: VPL50RS-006B

SCALE: 3" = 1'

EFFECTIVE DATE: 2022.04.25

SUPERCEDES: NEW





LEGEND

- 1. **PERM-A-BARRIER® VPL 50RS UV STABLE MEMBRANE**
- 2. ROOF MEMBRANE AND ROOF DETAILS
- 3. MASONRY ANCHOR DETAILING (SEE DRAWING VPL50RS-006)
- 4. MASONRY WEEP/VENT


NOTE

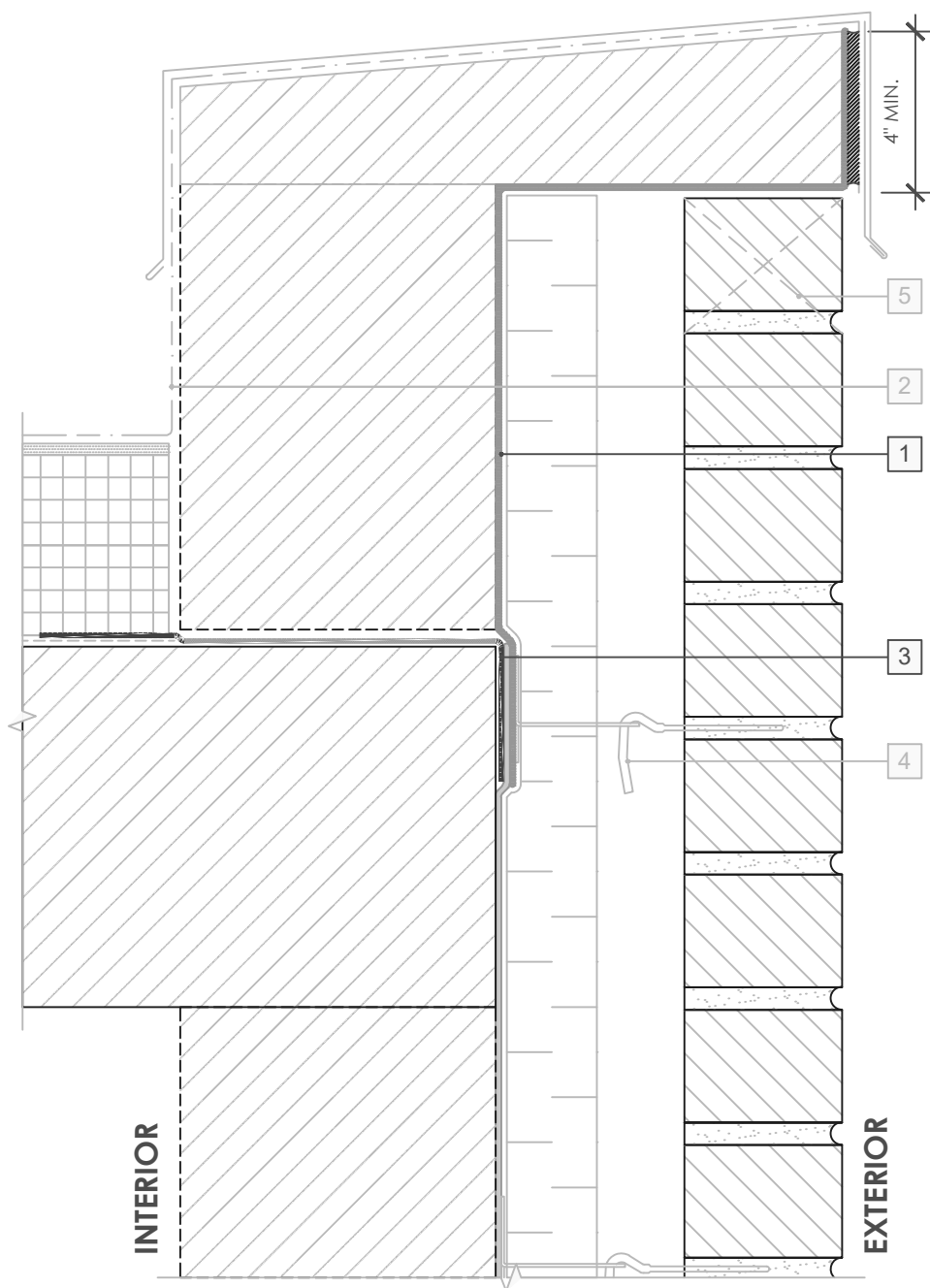
- CONSULT GCP & ROOFING MANUFACTURER FOR COMPATIBILITY AND CONNECTION AT ROOF INTERFACE

GENERAL NOTES

- 1. Detail not suitable for all climates. Avoiding excessive moisture accumulation in exterior walls is dependent on many factors including proper placement of insulation and water, air, and vapor control layers in the wall. Confirm membranes are suitable for project specific service temperatures. For assistance with exterior wall design, consult with a building science professional.
- 2. Install all GCP products in accordance with GCP Product Data Sheets and GCP recommendations.
- 3. GCP products are indicated in the detail legend in **BOLDFACE** font. Detail components by others are indicated in GRAY FONT. Install components per manufacturer and project specific requirements.

*Refer to air barrier system product data sheet for acceptable self-adhered flashing products.

| | | | | |
|--|--|--|-----------------|-------------|
|  | PARAPET DETAIL - MASONRY CLADDING | | DRAWING: | VPL50RS-007 |
| | PERM-A-BARRIER® VPL 50RS UV STABLE | | SCALE: | 3" = 1' |
| | | | EFFECTIVE DATE: | 2023.04.10 |
| | | | SUPERCEDES: | NEW |



LEGEND

- 1. PERM-A-BARRIER® VPL 50RS UV STABLE MEMBRANE**
- ROOF MEMBRANE AND ROOF DETAILS
- 3. PERM-A-BARRIER® SELF-ADHERED FLASHING* - PRIME SUBSTRATE WHERE REQUIRED**
- MASONRY ANCHOR DETAILING (SEE DRAWING VPL50RS-006)
- MASONRY WEEP/VENT

NOTE

- CONSULT GCP & ROOFING MANUFACTURER FOR COMPATIBILITY AND CONNECTION AT ROOF INTERFACE

GENERAL NOTES

- Detail not suitable for all climates. Avoiding excessive moisture accumulation in exterior walls is dependent on many factors including proper placement of insulation and water, air, and vapor control layers in the wall. Confirm membranes are suitable for project specific service temperatures. For assistance with exterior wall design, consult with a building science professional.
- Install all GCP products in accordance with GCP Product Data Sheets and GCP recommendations.
- GCP products are indicated in the detail legend in **BOLDFACE** font. Detail components by others are indicated in GRAY FONT. Install components per manufacturer and project specific requirements.

*Refer to air barrier system product data sheet for acceptable self-adhered flashing products.

PARAPET DETAIL - MASONRY CLADDING (ALTERNATE)

PERM-A-BARRIER® VPL 50RS UV STABLE

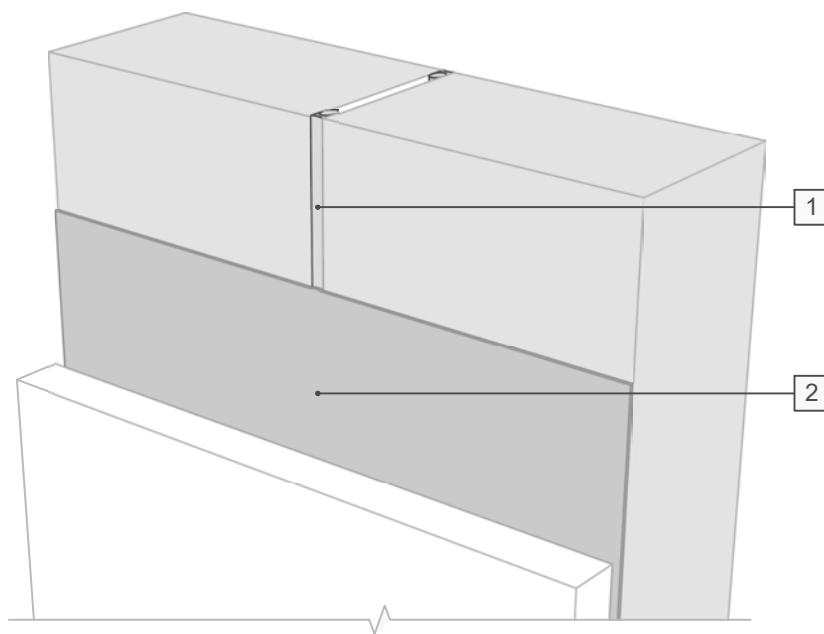
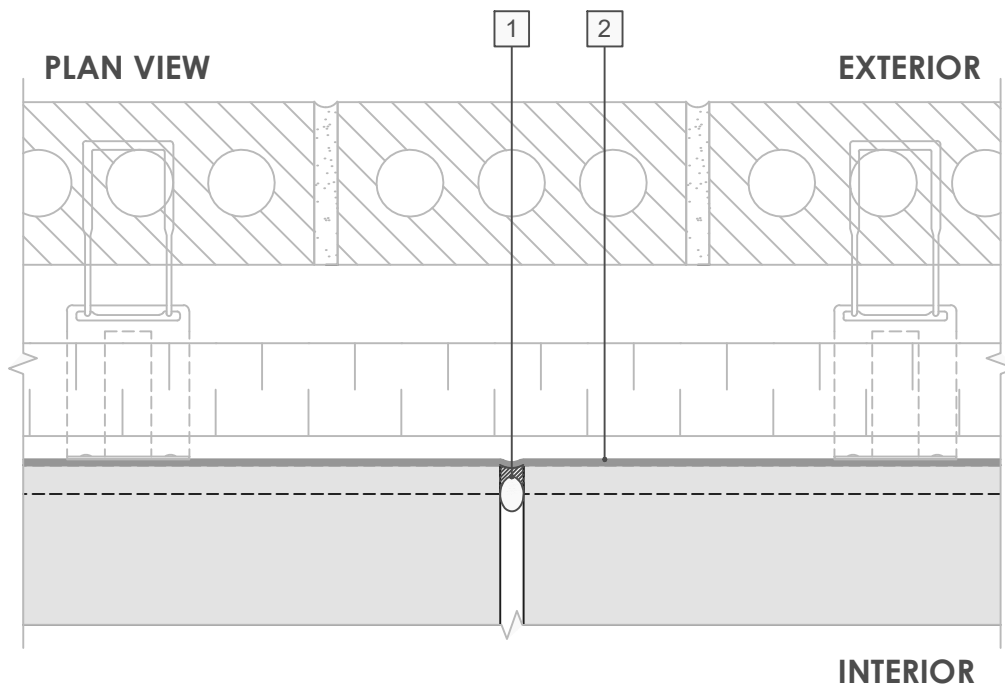
DRAWING: VPL50RS-007 (ALT)

SCALE: 3" = 1'

EFFECTIVE DATE: 2023.04.10

SUPERCEDES: NEW





LEGEND

1. BACKER ROD AND COMPATIBLE SEALANT
2. **PERM-A-BARRIER® VPL 50RS UV STABLE MEMBRANE**

NOTE

- CONSULT GCP TO CONFIRM SEALANT COMPATIBILITY

GENERAL NOTES

1. Detail not suitable for all climates. Avoiding excessive moisture accumulation in exterior walls is dependent on many factors including proper placement of insulation and water, air, and vapor control layers in the wall. Confirm membranes are suitable for project specific service temperatures. For assistance with exterior wall design, consult with a building science professional.
2. Install all GCP products in accordance with GCP Product Data Sheets and GCP recommendations.
3. GCP products are indicated in the detail legend in **BOLDFACE** font. Detail components by others are indicated in GRAY FONT. Install components per manufacturer and project specific requirements.

*Refer to air barrier system product data sheet for acceptable self-adhered flashing products.



CONTROL JOINT DETAIL

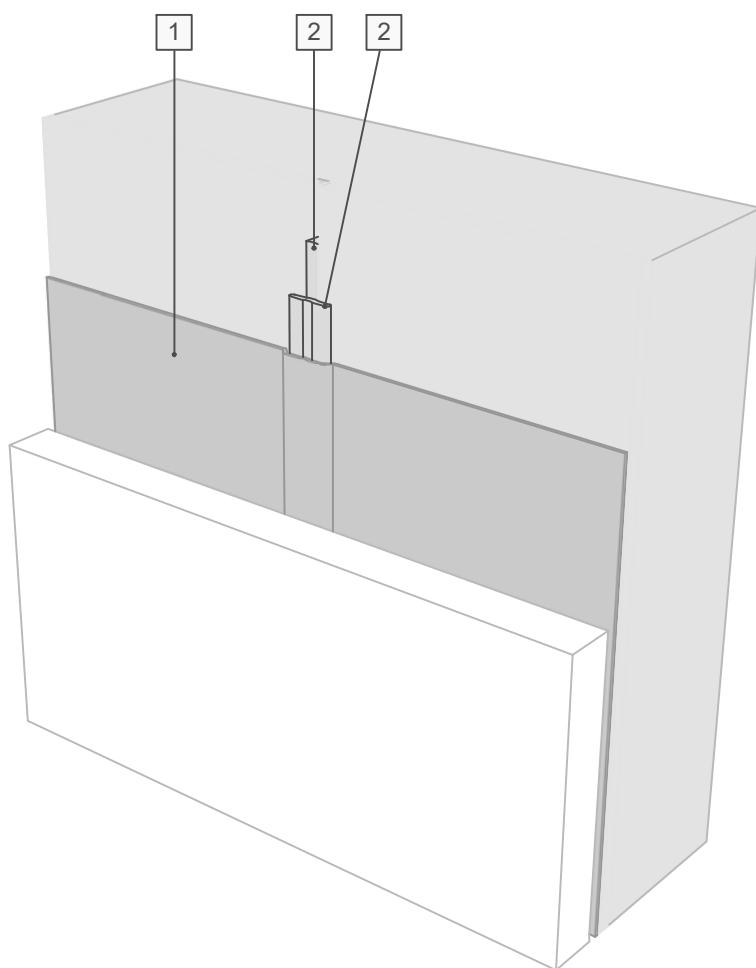
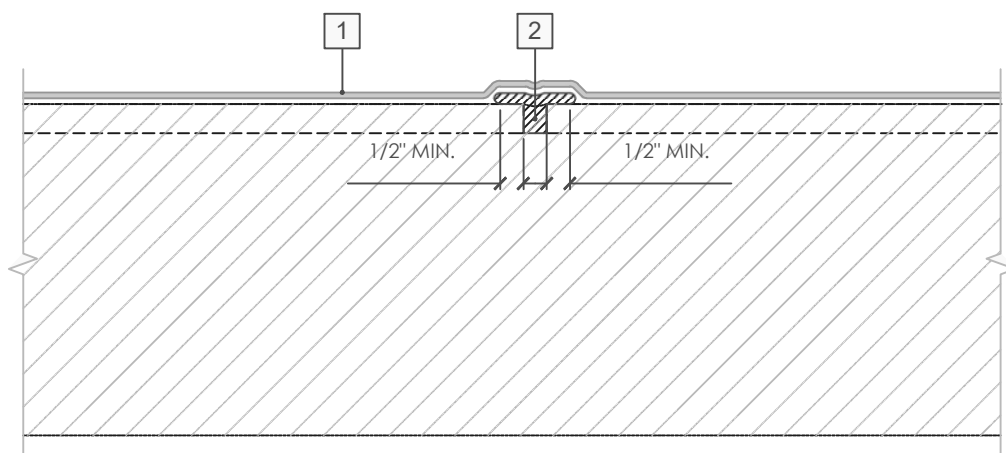
PERM-A-BARRIER® VPL 50RS UV STABLE

DRAWING: VPL50RS-009A

SCALE: 3" = 1'

EFFECTIVE DATE: 2023.04.10

SUPERCEDES: NEW



LEGEND

1. **PERM-A-BARRIER® VPL 50RS UV STABLE MEMBRANE**
2. **PERM-A-BARRIER® UNIVERSAL FLASHING**

GENERAL NOTES

1. Detail not suitable for all climates. Avoiding excessive moisture accumulation in exterior walls is dependent on many factors including proper placement of insulation and water, air, and vapor control layers in the wall. Confirm membranes are suitable for project specific service temperatures. For assistance with exterior wall design, consult with a building science professional.
2. Install all GCP products in accordance with GCP Product Data Sheets and GCP recommendations.
3. GCP products are indicated in the detail legend in **BOLDFACE** font. Detail components by others are indicated in GRAY FONT. Install components per manufacturer and project specific requirements.

*Refer to air barrier system product data sheet for acceptable self-adhered flashing products.

SHEATHING JOINT TREATMENT

PERM-A-BARRIER® VPL 50RS UV STABLE

DRAWING: VPL50RS-009B

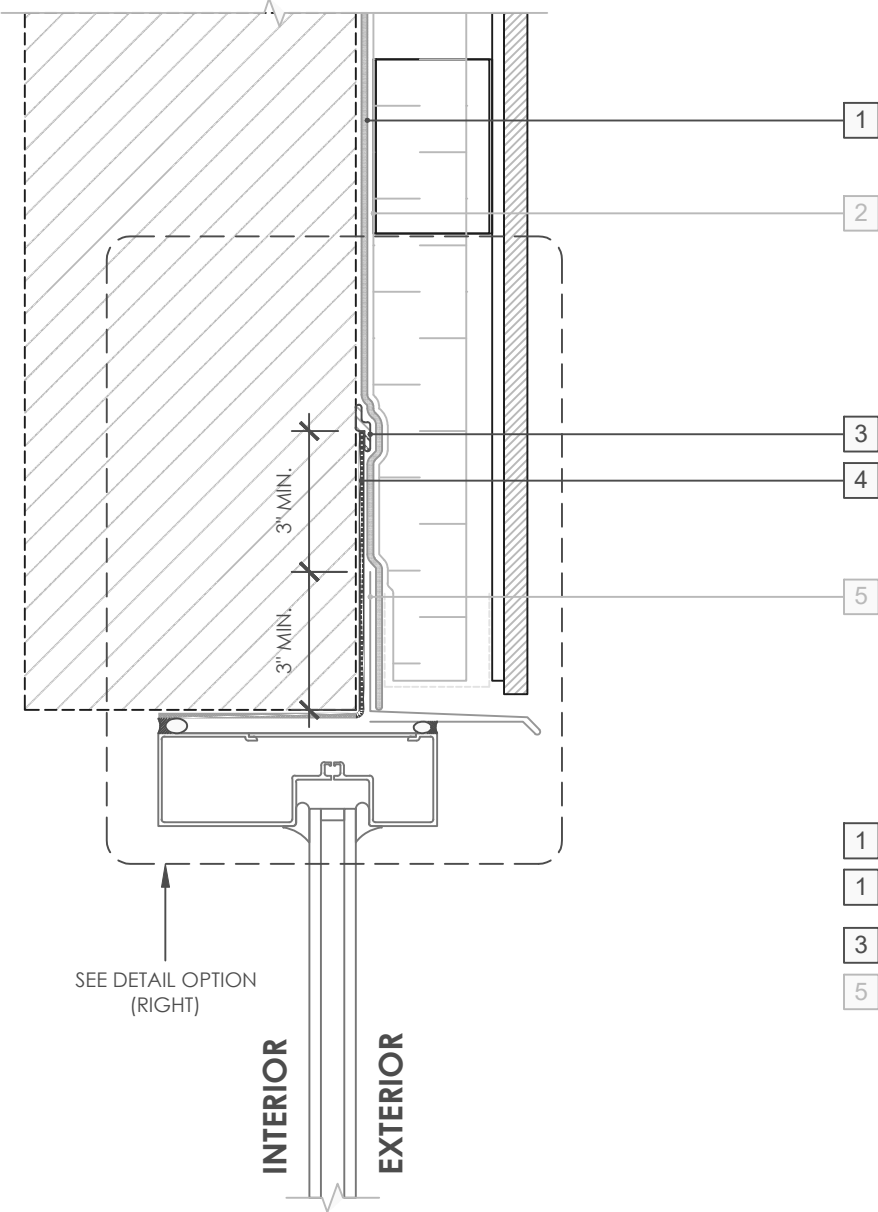
SCALE: 3" = 1'

EFFECTIVE DATE: 2022.04.25

SUPERCEDES: VPL50-007



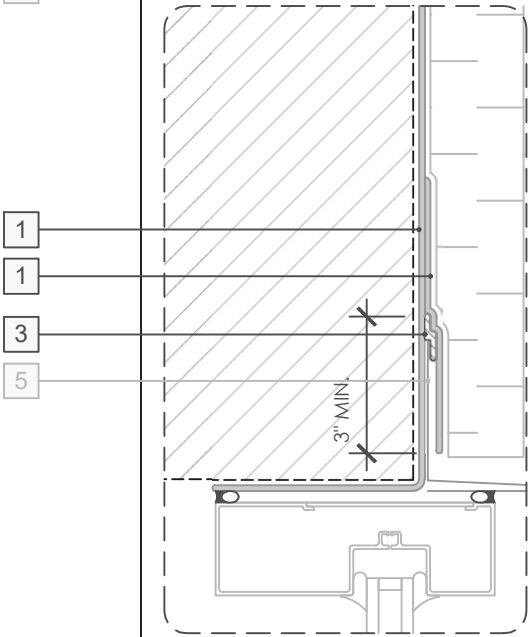
OPTION 1



LEGEND

- 1. **PERM-A-BARRIER® VPL 50RS UV STABLE MEMBRANE**
- 2. CLADDING ATTACHMENT, CONFIRM DETAILING REQUIREMENTS WITH THE GCPAT REPRESENTATIVE
- 3. **PERM-A-BARRIER® UNIVERSAL FLASHING - 1-INCH WIDE, TOOLED BEAD**
- 4. **PERM-A-BARRIER® SELF-ADHERED FLASHING***
- 5. SHEET METAL FLASHING PER ARCH

OPTION 2



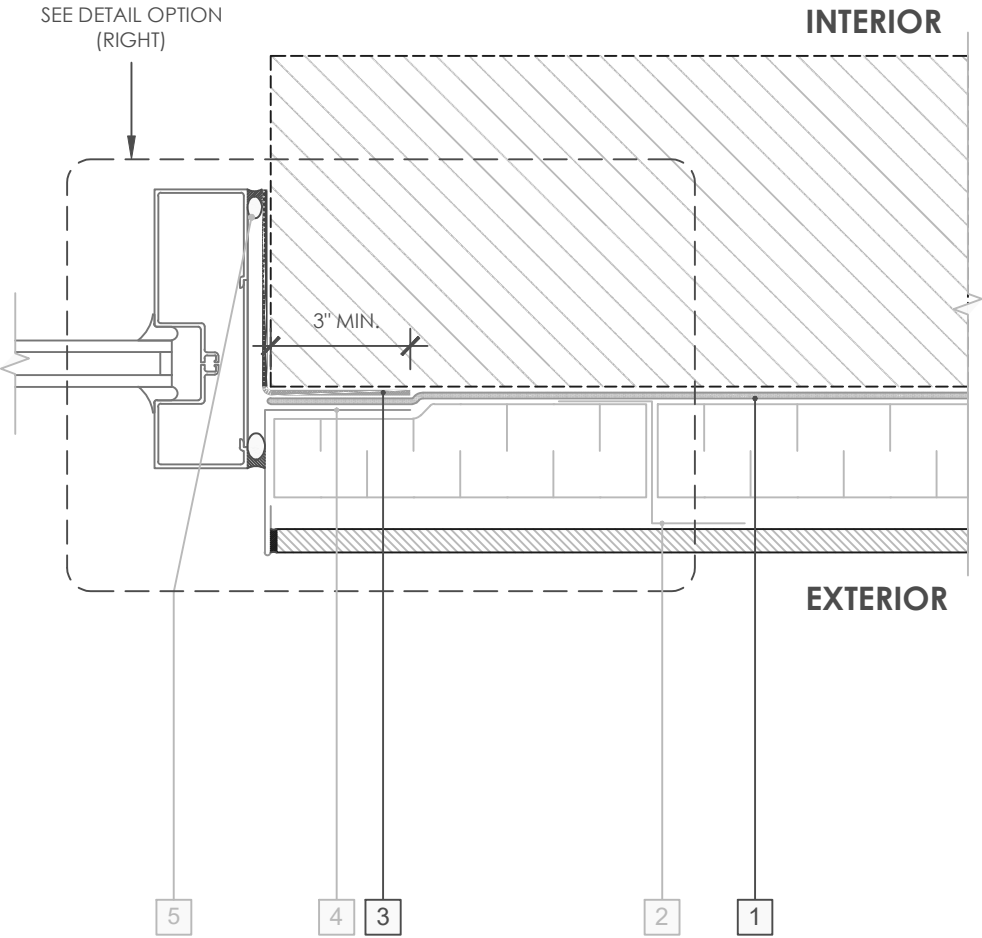
GENERAL NOTES

- 1. Detail not suitable for all climates. Avoiding excessive moisture accumulation in exterior walls is dependent on many factors including proper placement of insulation and water, air, and vapor control layers in the wall. Confirm membranes are suitable for project specific service temperatures. For assistance with exterior wall design, consult with a building science professional.
- 2. Install all GCP products in accordance with GCP Product Data Sheets and GCP recommendations.
- 3. GCP products are indicated in the detail legend in **BOLDFACE** font. Detail components by others are indicated in GRAY FONT. Install components per manufacturer and project specific requirements.

*Refer to air barrier system product data sheet for acceptable self-adhered flashing products.

| | | | |
|--|--|-----------------|------------------|
|  | WINDOW HEAD DETAIL - NON-MASONRY CLADDING | DRAWING: | VPL 50 RS UV-010 |
| | | SCALE: | 3" = 1' |
| | PERM-A-BARRIER® VPL 50RS UV STABLE | EFFECTIVE DATE: | 2023.04.10 |
| | | SUPERCEDES: | NEW |

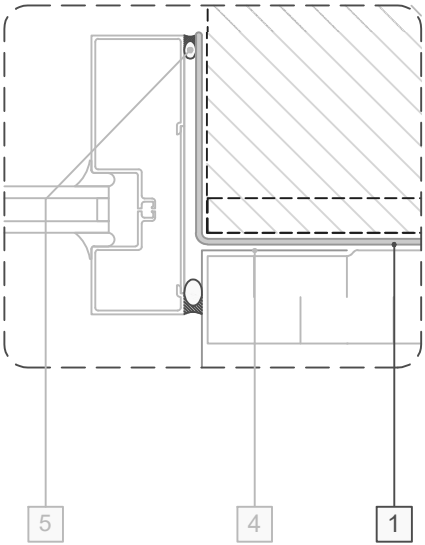
OPTION 1



LEGEND

1. **PERM-A-BARRIER® VPL 50RS UV STABLE MEMBRANE**
2. CLADDING ATTACHMENT, CONFIRM DETAILING REQUIREMENTS WITH THE GCPAT REPRESENTATIVE
3. **PERM-A-BARRIER® SELF-ADHERED FLASHING***
4. SHEET METAL FLASHING PER ARCH
5. INTERIOR AIR SEALANT OVER BACKER ROD

OPTION 2



GENERAL NOTES

1. Detail not suitable for all climates. Avoiding excessive moisture accumulation in exterior walls is dependent on many factors including proper placement of insulation and water, air, and vapor control layers in the wall. Confirm membranes are suitable for project specific service temperatures. For assistance with exterior wall design, consult with a building science professional.
2. Install all GCP products in accordance with GCP Product Data Sheets and GCP recommendations.
3. GCP products are indicated in the detail legend in **BOLDFACE** font. Detail components by others are indicated in GRAY FONT. Install components per manufacturer and project specific requirements.

*Refer to air barrier system product data sheet for acceptable self-adhered flashing products.

WINDOW JAMB DETAIL -
NON-MASONRY CLADDING

PERM-A-BARRIER® VPL 50RS UV STABLE

DRAWING: VPL 50 RS UV-011

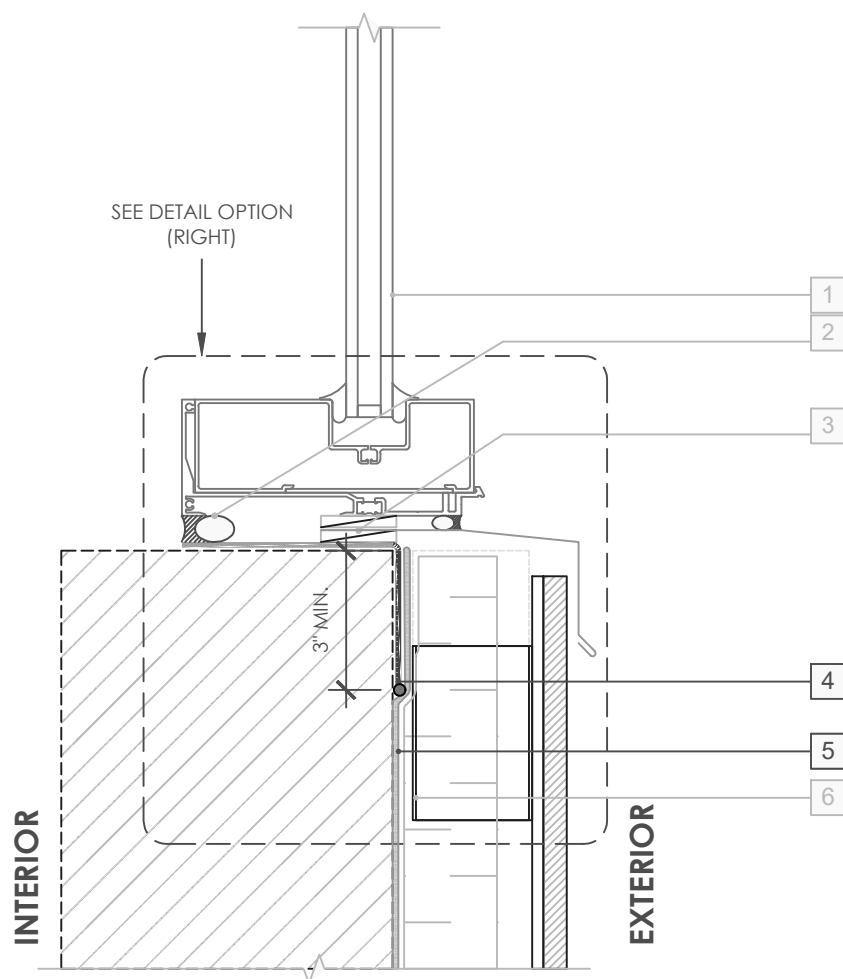
SCALE: 3" = 1'

EFFECTIVE DATE: 2023.04.10

SUPERCEDES: NEW



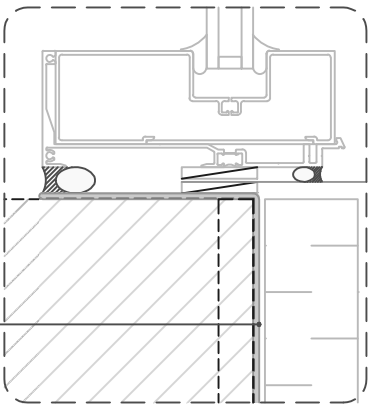
OPTION 1



LEGEND

- 1. NON-FLANGED WINDOW SYSTEM
- 2. INTERIOR AIR SEALANT OVER BACKER ROD
- 3. SHEET METAL FLASHING SANDWICHED BETWEEN 1/4" SHIMS
- 4. **PERM-A-BARRIER® SELF-ADHERED FLASHING* (RAW EDGE SEALED WITH UNIVERSAL FLASHING)**
- 5. **PERM-A-BARRIER® VPL 50RS UV STABLE MEMBRANE**
- 6. CLADDING ATTACHMENT, CONFIRM DETAILING REQUIREMENTS WITH THE GCPAT REPRESENTATIVE

OPTION 2



GENERAL NOTES

- 1. Detail not suitable for all climates. Avoiding excessive moisture accumulation in exterior walls is dependent on many factors including proper placement of insulation and water, air, and vapor control layers in the wall. Confirm membranes are suitable for project specific service temperatures. For assistance with exterior wall design, consult with a building science professional.
- 2. Install all GCP products in accordance with GCP Product Data Sheets and GCP recommendations.
- 3. GCP products are indicated in the detail legend in **BOLDFACE** font. Detail components by others are indicated in GRAY FONT. Install components per manufacturer and project specific requirements.

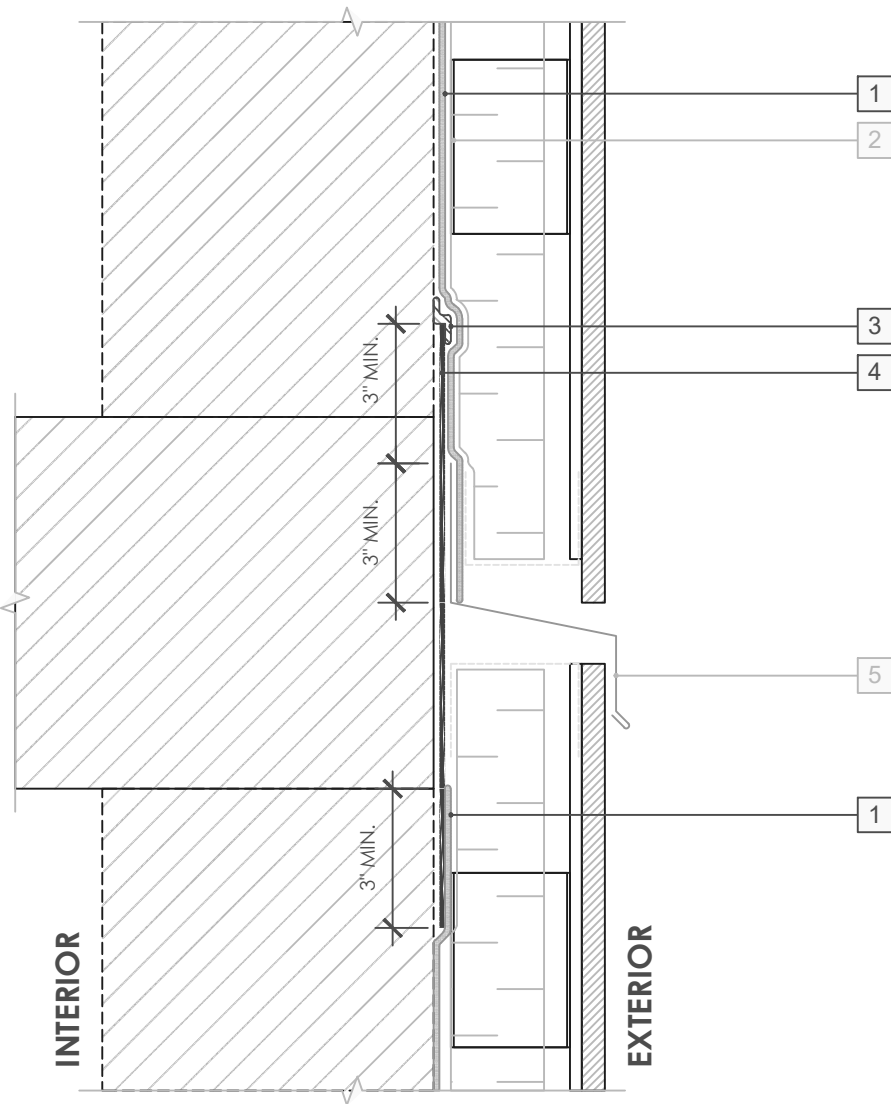
*Refer to air barrier system product data sheet for acceptable self-adhered flashing products.



WINDOW SILL DETAIL -
NON-MASONRY CLADDING

PERM-A-BARRIER® VPL 50RS UV STABLE

| | |
|-----------------|-----------------|
| DRAWING: | VPL 50 RSYV-012 |
| SCALE: | 3" = 1' |
| EFFECTIVE DATE: | 2023.04.10 |
| SUPERCEDES: | NEW |



LEGEND

1. **PERM-A-BARRIER® VPL 50RS UV STABLE MEMBRANE**
2. CLADDING ATTACHMENT, CONFIRM DETAILING REQUIREMENTS WITH THE GCPAT REPRESENTATIVE
3. **PERM-A-BARRIER® UNIVERSAL FLASHING - 1-INCH WIDE, TOOLED BEAD**
4. **PERM-A-BARRIER® SELF-ADHERED FLASHING***
5. SHEET METAL FLASHING PER ARCH

GENERAL NOTES

1. Detail not suitable for all climates. Avoiding excessive moisture accumulation in exterior walls is dependent on many factors including proper placement of insulation and water, air, and vapor control layers in the wall. Confirm membranes are suitable for project specific service temperatures. For assistance with exterior wall design, consult with a building science professional.
2. Install all GCP products in accordance with GCP Product Data Sheets and GCP recommendations.
3. GCP products are indicated in the detail legend in **BOLDFACE** font. Detail components by others are indicated in GRAY FONT. Install components per manufacturer and project specific requirements.

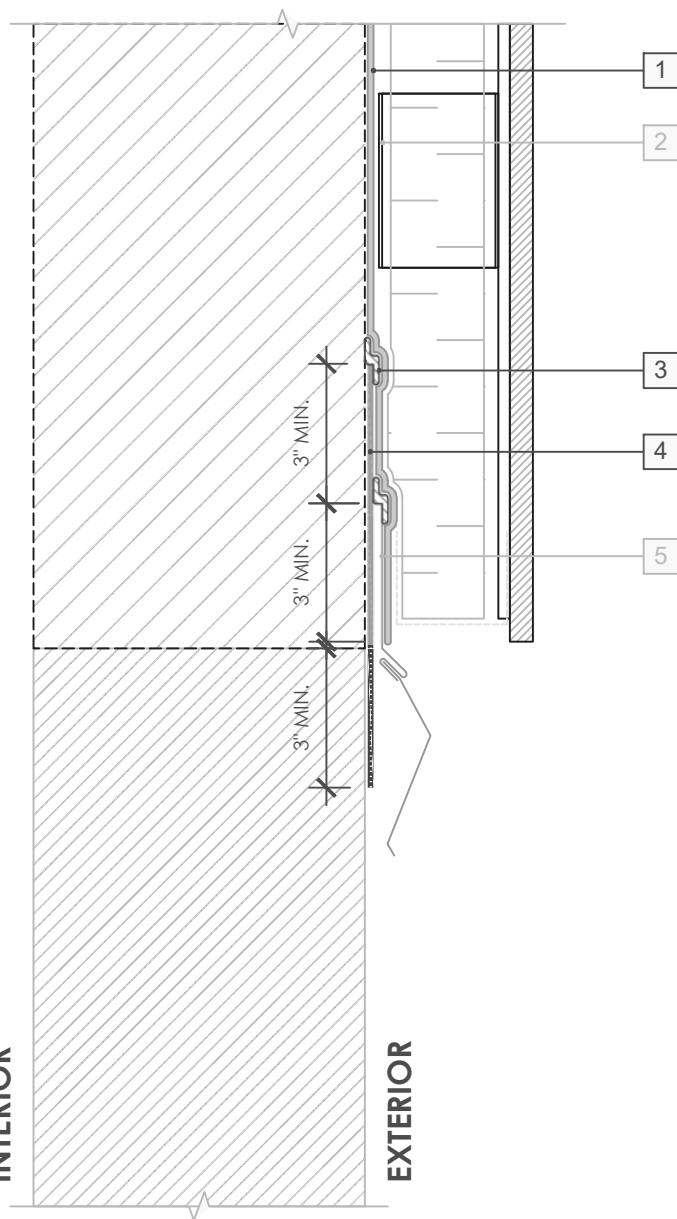
*Refer to air barrier system product data sheet for acceptable self-adhered flashing products.

FLOOR LINE DETAIL - NON-MASONRY CLADDING

PERM-A-BARRIER® VPL 50RS UV STABLE

| | |
|-----------------|-----------------|
| DRAWING: | VPL 50 RSUV-013 |
| SCALE: | 3" = 1' |
| EFFECTIVE DATE: | 2023.04.10 |
| SUPERCEDES: | NEW |





LEGEND

1. **PERM-A-BARRIER® VPL 50RS UV STABLE MEMBRANE**
2. CLADDING ATTACHMENT, CONFIRM DETAILING REQUIREMENTS WITH THE GCPAT REPRESENTATIVE
3. **PERM-A-BARRIER® UNIVERSAL FLASHING - 1-INCH WIDE, TOOLED BEAD**
4. **PERM-A-BARRIER® SELF-ADHERED FLASHING***
5. TWO-PIECE SHEET METAL FLASHING PER ARCH

NOTE

- CONFIRM MAXIMUM SERVICE TEMPERATURE OF PERM-A-BARRIER PRODUCTS DIRECTLY UNDER EXPOSED METAL FLASHING

GENERAL NOTES

1. Detail not suitable for all climates. Avoiding excessive moisture accumulation in exterior walls is dependent on many factors including proper placement of insulation and water, air, and vapor control layers in the wall. Confirm membranes are suitable for project specific service temperatures. For assistance with exterior wall design, consult with a building science professional.
2. Install all GCP products in accordance with GCP Product Data Sheets and GCP recommendations.
3. GCP products are indicated in the detail legend in **BOLDFACE** font. Detail components by others are indicated in GRAY FONT. Install components per manufacturer and project specific requirements.

*Refer to air barrier system product data sheet for acceptable self-adhered flashing products.

CONCRETE STEM WALL - NON-MASONRY CLADDING

PERM-A-BARRIER® VPL 50RS UV STABLE

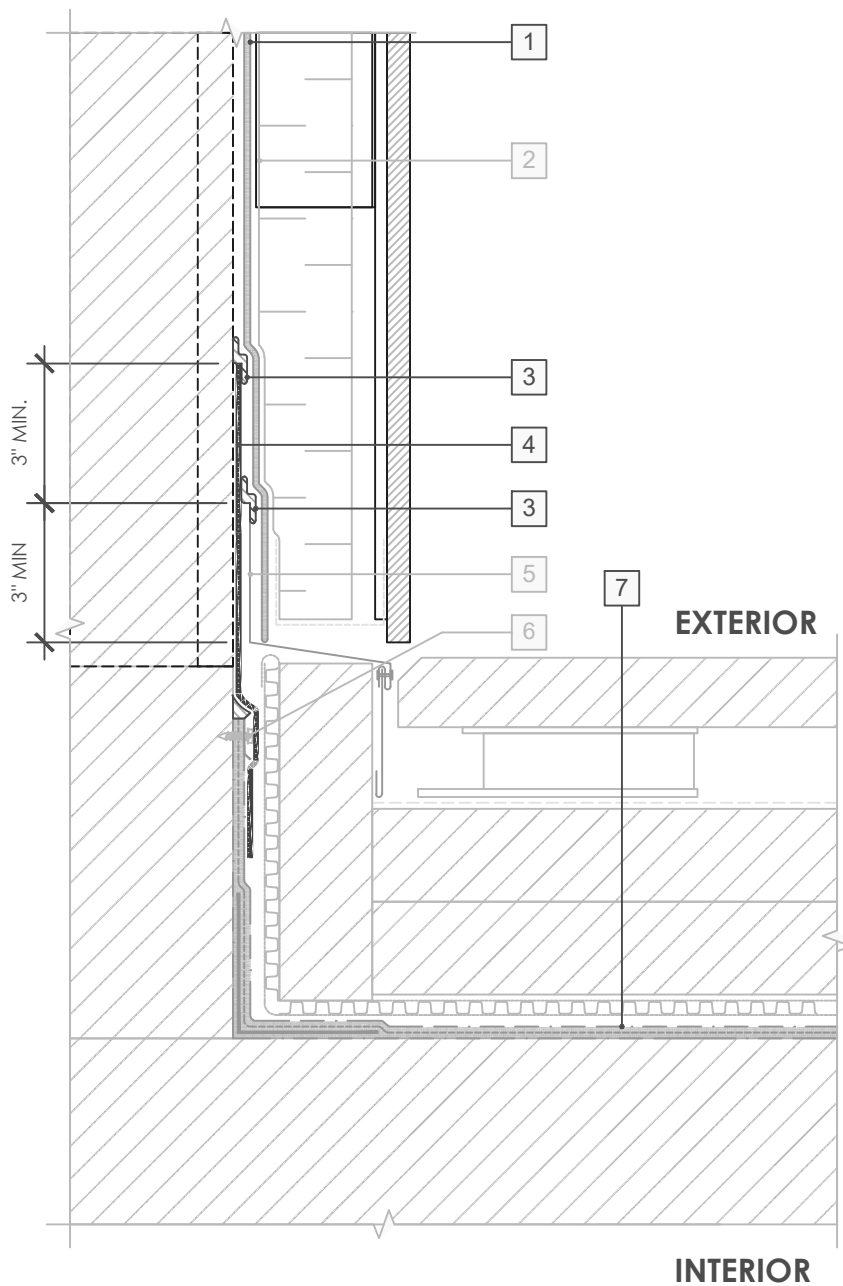
DRAWING: VPL 50 RSUV-014

SCALE: 3" = 1'

EFFECTIVE DATE: 2023.04.10

SUPERCEDES: NEW





LEGEND

1. **PERM-A-BARRIER® VPL 50RS UV STABLE MEMBRANE**
2. CLADDING ATTACHMENT, CONFIRM DETAILING REQUIREMENTS WITH THE GCPAT REPRESENTATIVE
3. **PERM-A-BARRIER® UNIVERSAL FLASHING - 1-INCH WIDE, TOOLED BEAD**
4. **PERM-A-BARRIER® SELF-ADHERED FLASHING***
5. SHEET METAL FLASHING PER ARCH
6. TERMINATION PER HORIZONTAL WATERPROOFING SYSTEM MANUFACTURER
7. **HORIZONTAL WATERPROOFING SYSTEM - SEE GCPAT.COM**

NOTE

- CONSULT GCP FOR HORIZONTAL WATERPROOFING COMPATIBILITY AND CONNECTION

GENERAL NOTES

1. Detail not suitable for all climates. Avoiding excessive moisture accumulation in exterior walls is dependent on many factors including proper placement of insulation and water, air, and vapor control layers in the wall. Confirm membranes are suitable for project specific service temperatures. For assistance with exterior wall design, consult with a building science professional.
2. Install all GCP products in accordance with GCP Product Data Sheets and GCP recommendations.
3. GCP products are indicated in the detail legend in **BOLDFACE** font. Detail components by others are indicated in GRAY FONT. Install components per manufacturer and project specific requirements.

*Refer to air barrier system product data sheet for acceptable self-adhered flashing products.

BASE-OF-WALL DETAIL - NON-MASONRY CLADDING

PERM-A-BARRIER® VPL 50RS UV STABLE

DRAWING: VPL 50RS UV-015

SCALE: 3" = 1'

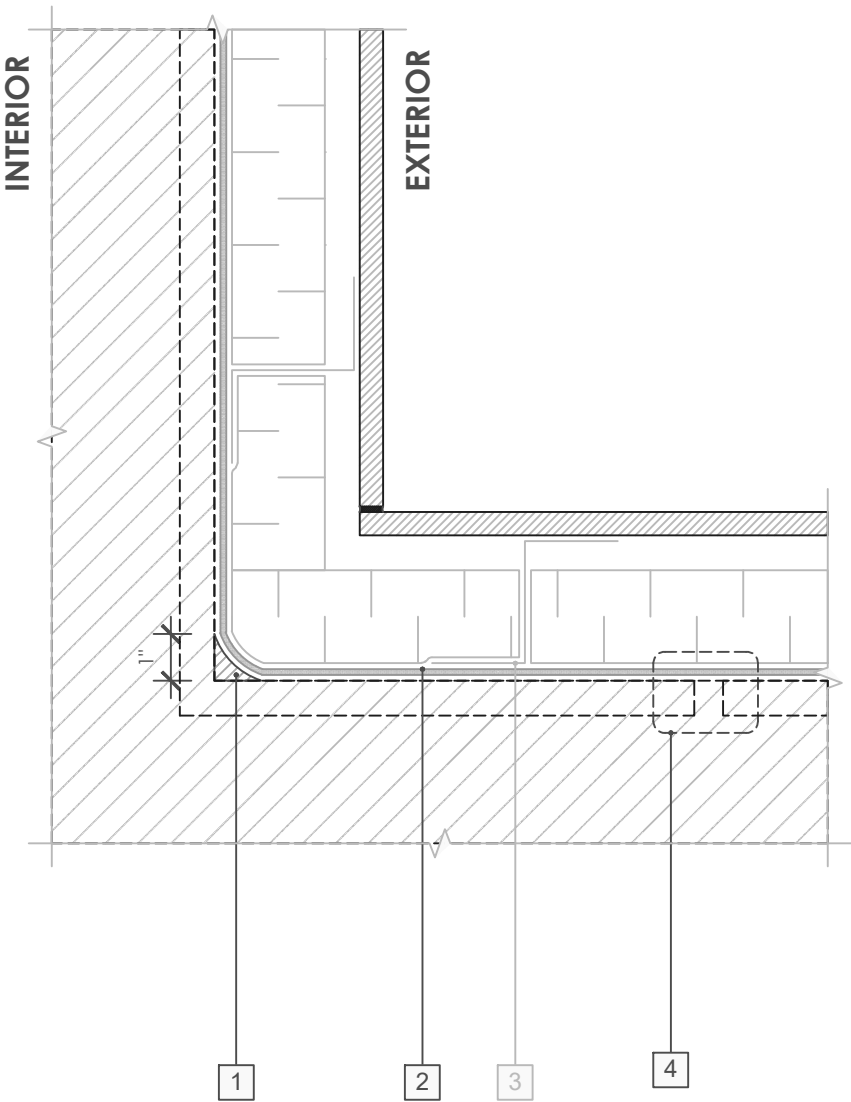
EFFECTIVE DATE: 2023.04.10

SUPERCEDES: VPL50-004



LEGEND

- 1. **PERM-A-BARRIER® UNIVERSAL FLASHING - 1-INCH WIDE, TOOLED BEAD**
- 2. **PERM-A-BARRIER® VPL 50RS UV STABLE MEMBRANE**
- 3. CLADDING ATTACHMENT, DETAIL PER GCPAT REQUIREMENTS
- 4. **JOINT TREATMENT PER DRAWING VPL50RS-009B**



GENERAL NOTES

- 1. Detail not suitable for all climates. Avoiding excessive moisture accumulation in exterior walls is dependent on many factors including proper placement of insulation and water, air, and vapor control layers in the wall. Confirm membranes are suitable for project specific service temperatures. For assistance with exterior wall design, consult with a building science professional.
- 2. Install all GCP products in accordance with GCP Product Data Sheets and GCP recommendations.
- 3. GCP products are indicated in the detail legend in **BOLDFACE** font. Detail components by others are indicated in GRAY FONT. Install components per manufacturer and project specific requirements.

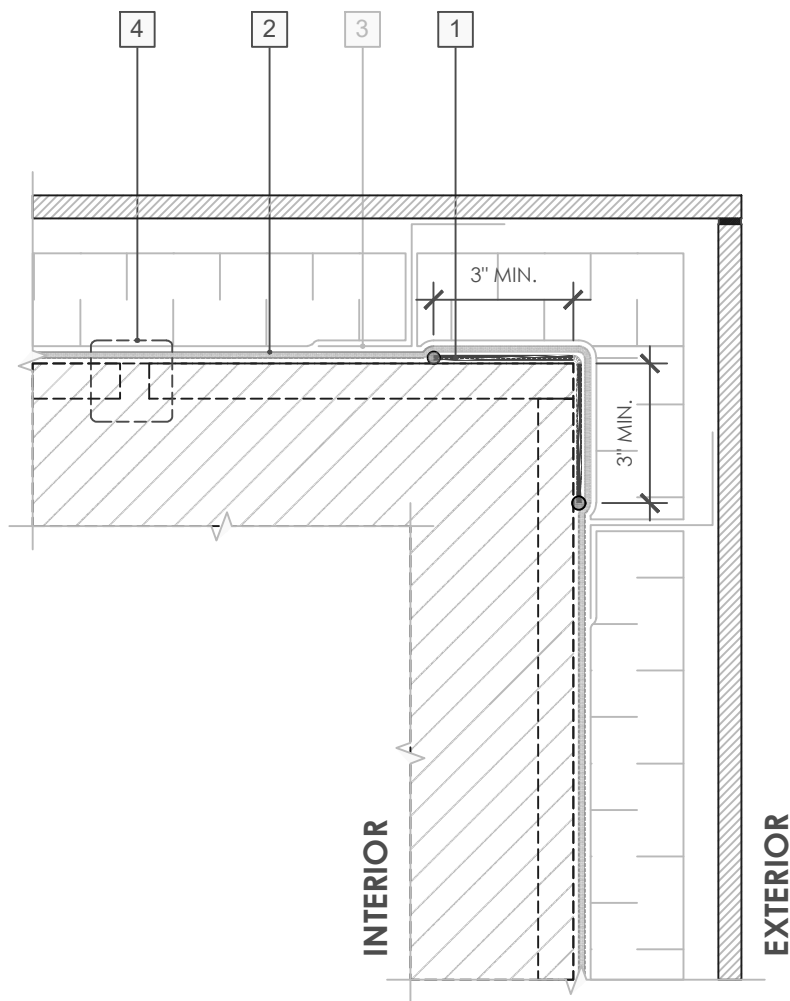
*Refer to air barrier system product data sheet for acceptable self-adhered flashing products.

INSIDE CORNER -
NON-MASONRY CLADDING

PERM-A-BARRIER® VPL 50RS UV STABLE



| | |
|-----------------|-----------------|
| DRAWING: | VPL 50RS UV-016 |
| SCALE: | 3" = 1' |
| EFFECTIVE DATE: | 2023.04.10 |
| SUPERCEDES: | VPL50-002 |



LEGEND

1. **PERM-A-BARRIER® SELF-ADHERED FLASHING (RAW EDGE TERMINATED WITH UNIVERSAL FLASHING)**
2. **PERM-A-BARRIER® VPL 50RS UV STABLE MEMBRANE**
3. CLADDING ATTACHMENT, DETAIL PER GCPAT REQUIREMENTS
4. **JOINT TREATMENT PER DRAWING VPL50RS-009B**

NOTE

- AT CMU OR CAST-IN-PLACE CONCRETE CONSTRUCTION, SELF ADHERED FLASHING AT OUTSIDE CORNERS IS OPTIONAL PROVIDED SUBSTRATE ALLOWS FOR CONTINUOUS AND REQUIRED SYSTEM THICKNESS

GENERAL NOTES

1. Detail not suitable for all climates. Avoiding excessive moisture accumulation in exterior walls is dependent on many factors including proper placement of insulation and water, air, and vapor control layers in the wall. Confirm membranes are suitable for project specific service temperatures. For assistance with exterior wall design, consult with a building science professional.
2. Install all GCP products in accordance with GCP Product Data Sheets and GCP recommendations.
3. GCP products are indicated in the detail legend in **BOLDFACE** font. Detail components by others are indicated in GRAY FONT. Install components per manufacturer and project specific requirements.

*Refer to air barrier system product data sheet for acceptable self-adhered flashing products.



OUTSIDE CORNER - NON-MASONRY CLADDING

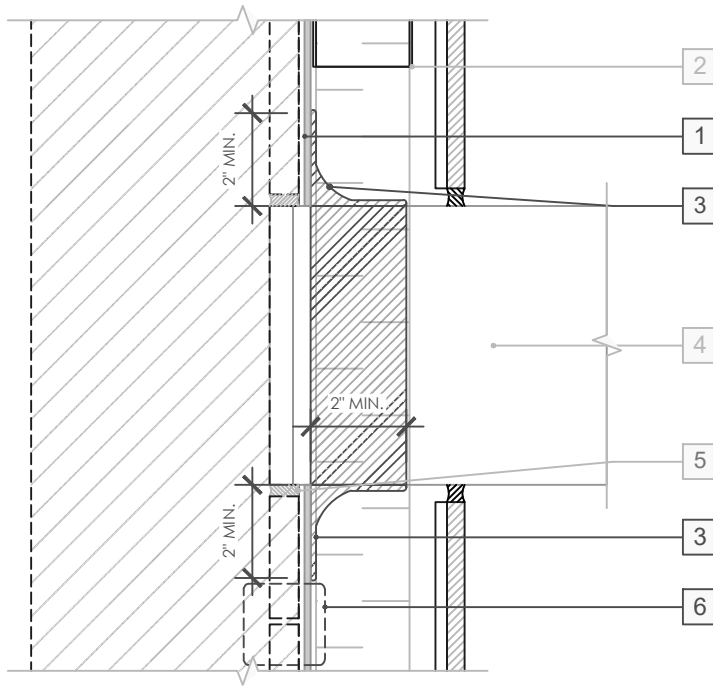
PERM-A-BARRIER® VPL 50RS UV STABLE

DRAWING: VPL 50RS UV-017

SCALE: 3" = 1'

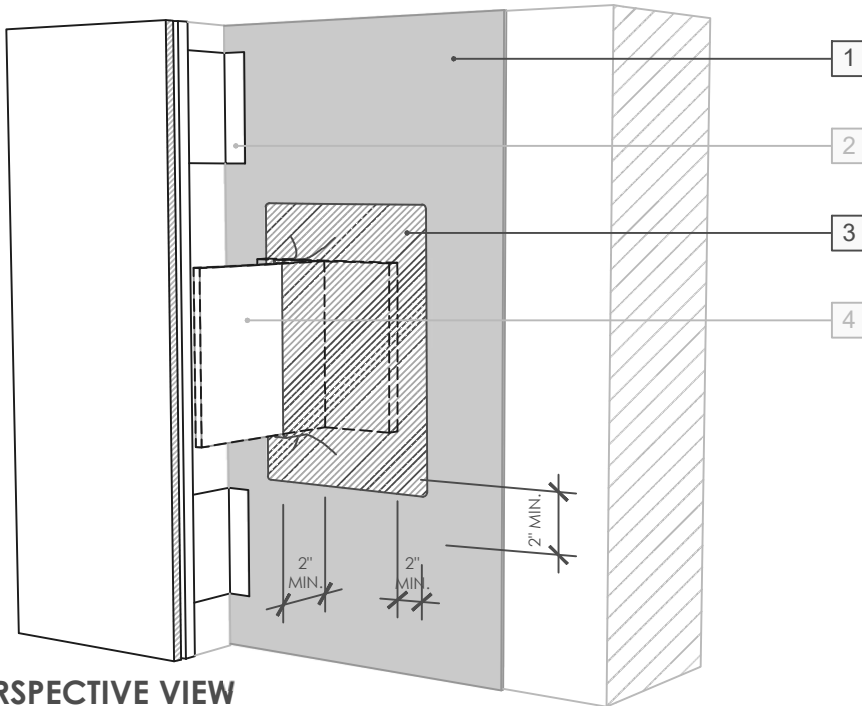
EFFECTIVE DATE: 2023.04.10

SUPERCEDES: VPL50-003



LEGEND

1. **PERM-A-BARRIER® VPL 50RS UV STABLE MEMBRANE**
2. CLADDING ATTACHMENT - CONFIRM DETAILING REQUIREMENTS WITH THE GCPAT REPRESENTATIVE
3. **PERM-A-BARRIER® UNIVERSAL FLASHING AND CANT SEAL**
4. KNIFE PLATE PENETRATION
5. GCP APPROVED SEALANT OR NON-SHRINK GROUT PER BACKUP WALL TYPE
6. **JOINT TREATMENT PER DETAIL VPL50RS-009B**



PERSPECTIVE VIEW

GENERAL NOTES

1. Detail not suitable for all climates. Avoiding excessive moisture accumulation in exterior walls is dependent on many factors including proper placement of insulation and water, air, and vapor control layers in the wall. Confirm membranes are suitable for project specific service temperatures. For assistance with exterior wall design, consult with a building science professional.
2. Install all GCP products in accordance with GCP Product Data Sheets and GCP recommendations.
3. GCP products are indicated in the detail legend in **BOLDFACE** font. Detail components by others are indicated in GRAY FONT. Install components per manufacturer and project specific requirements.

*Refer to air barrier system product data sheet for acceptable self-adhered flashing products.

KNIFE PLATE PENETRATION DETAIL - NON-MASONRY CLADDING

PERM-A-BARRIER® VPL 50RS UV STABLE

DRAWING: VPL 50RS UV-018

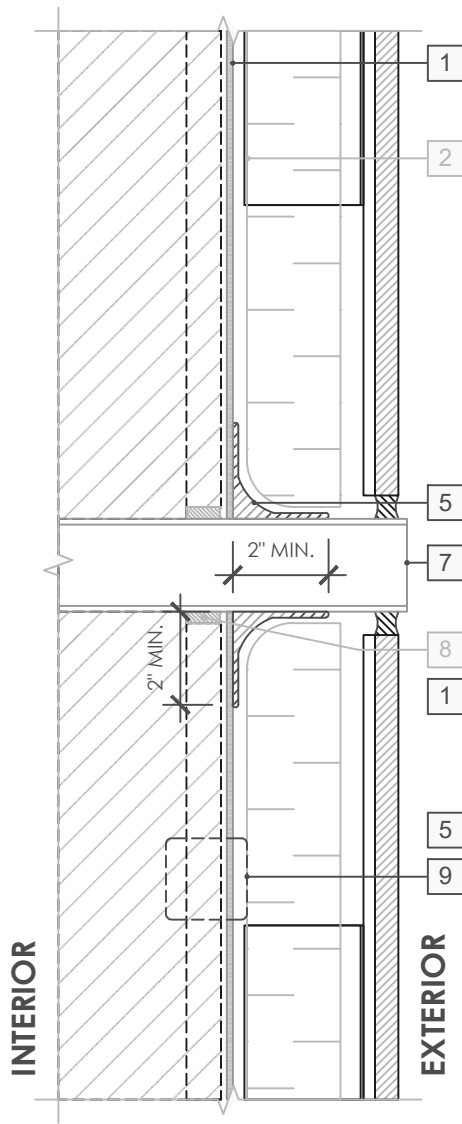
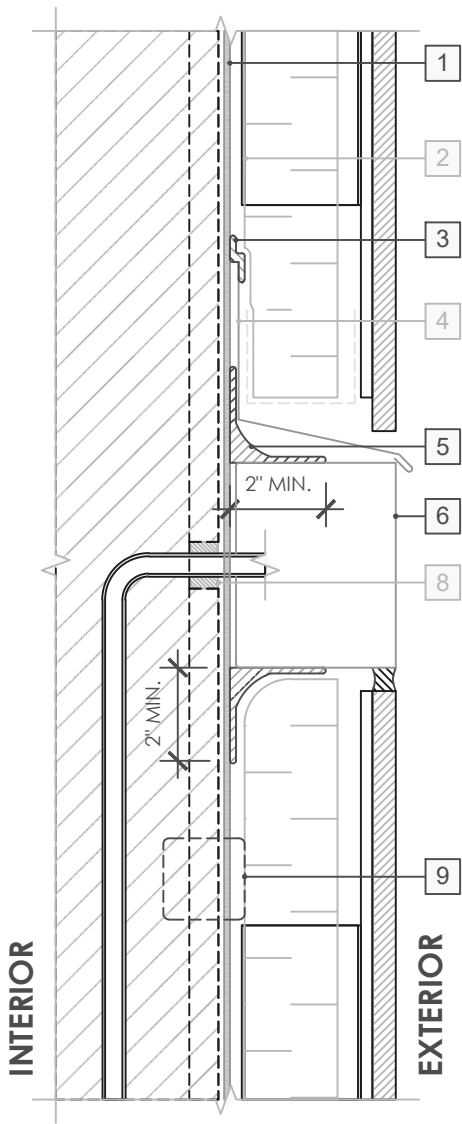
SCALE: 3" = 1'

EFFECTIVE DATE: 2023.04.10

SUPERCEDES: NEW



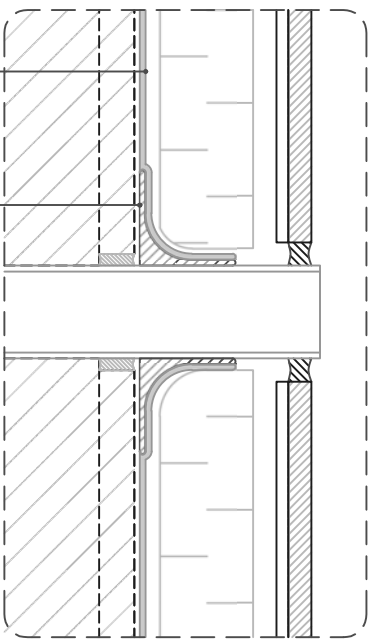
OPTION 1



LEGEND

- 1. **PERM-A-BARRIER® VPL 50RS UV STABLE MEMBRANE**
- 2. CLADDING ATTACHMENT, CONFIRM DETAILING REQUIREMENTS WITH THE GCPAT REPRESENTATIVE
- 3. **PERM-A-BARRIER® UNIVERSAL FLASHING - 1-INCH WIDE, TOOLED BEAD**
- 4. SHEET METAL FLASHING PER ARCH
- 5. **PERM-A-BARRIER® UNIVERSAL FLASHING AND CANT SEAL**
- 6. AIR AND WATER TIGHT BOX AND PENETRATION
- 7. AIR AND WATER TIGHT PIPE PENETRATION
- 8. GCP APPROVED SEALANT OR NON-SHRINK GROUT PER BACKUP WALL TYPE
- 9. JOINT TREATMENT PER DETAIL ISO 009-B

OPTION 2



GENERAL NOTES

- 1. Detail not suitable for all climates. Avoiding excessive moisture accumulation in exterior walls is dependent on many factors including proper placement of insulation and water, air, and vapor control layers in the wall. Confirm membranes are suitable for project specific service temperatures. For assistance with exterior wall design, consult with a building science professional.
- 2. Install all GCP products in accordance with GCP Product Data Sheets and GCP recommendations.
- 3. GCP products are indicated in the detail legend in **BOLDFACE** font. Detail components by others are indicated in GRAY FONT. Install components per manufacturer and project specific requirements.

*Refer to air barrier system product data sheet for acceptable self-adhered flashing products.

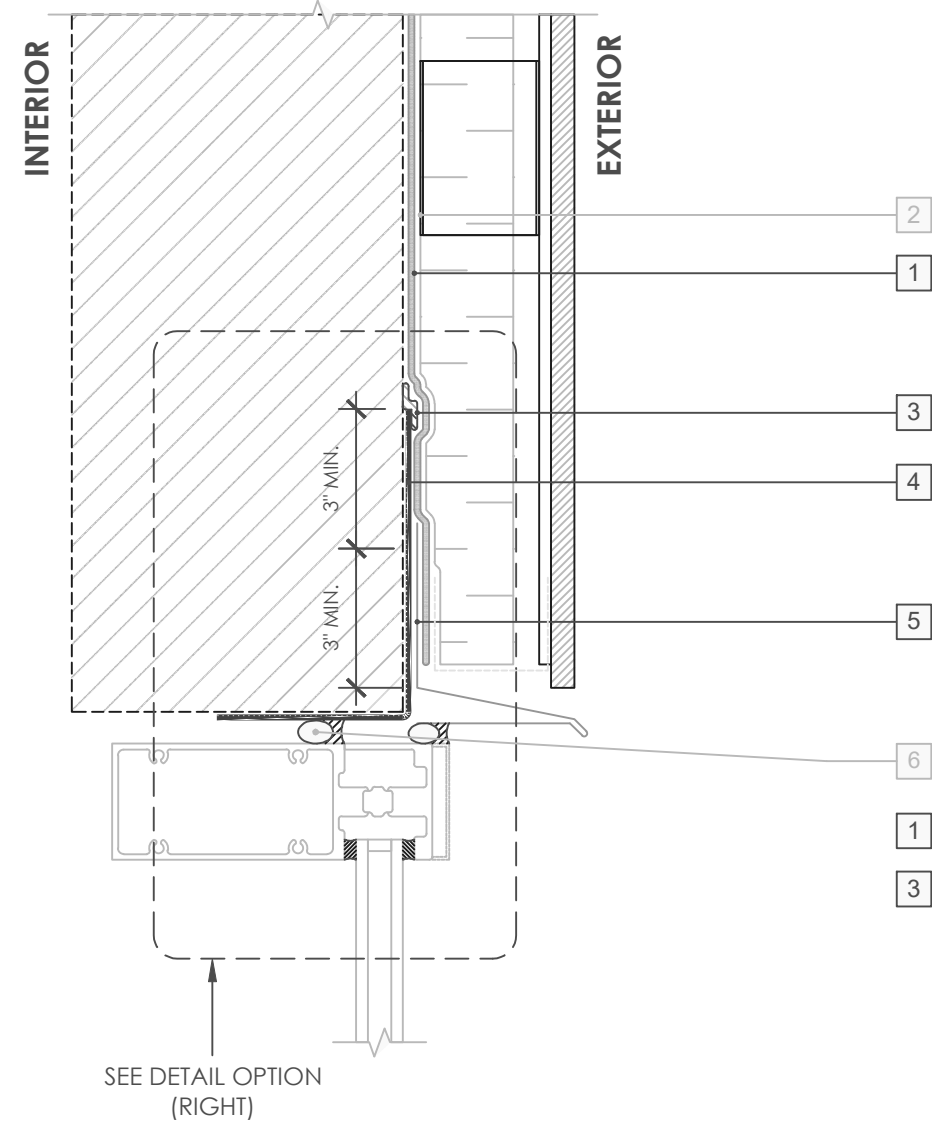


PENETRATION DETAILS -
NON-MASONRY CLADDING

PERM-A-BARRIER® VPL 50RS UV STABLE

| | |
|-----------------|-----------------|
| DRAWING: | VPL 50RS UV-019 |
| SCALE: | 3" = 1' |
| EFFECTIVE DATE: | 2023.04.10 |
| SUPERCEDES: | VPL50-005 |

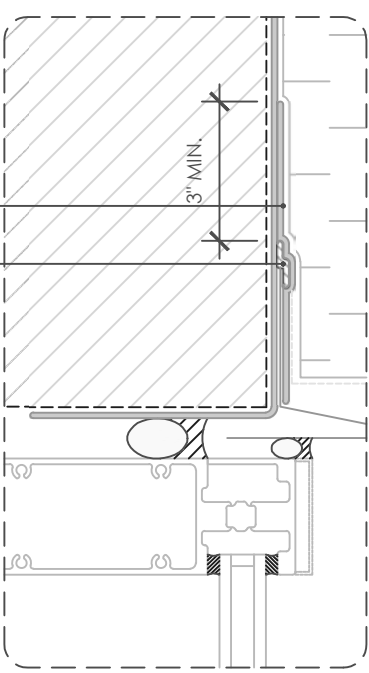
OPTION 1



LEGEND

1. **PERM-A-BARRIER® VPL 50RS UV STABLE MEMBRANE**
2. CLADDING ATTACHMENT, CONFIRM DETAILING REQUIREMENTS WITH THE GCPAT REPRESENTATIVE
3. **PERM-A-BARRIER® UNIVERSAL FLASHING - 1-INCH WIDE, TOOLED BEAD**
4. **PERM-A-BARRIER® SELF-ADHERED FLASHING***
5. SHEET METAL FLASHING PER ARCH
6. INTERIOR AIR SEALANT OVER BACKER ROD

OPTION 2



GENERAL NOTES

1. Detail not suitable for all climates. Avoiding excessive moisture accumulation in exterior walls is dependent on many factors including proper placement of insulation and water, air, and vapor control layers in the wall. Confirm membranes are suitable for project specific service temperatures. For assistance with exterior wall design, consult with a building science professional.
2. Install all GCP products in accordance with GCP Product Data Sheets and GCP recommendations.
3. GCP products are indicated in the detail legend in **BOLDFACE** font. Detail components by others are indicated in GRAY FONT. Install components per manufacturer and project specific requirements.

*Refer to air barrier system product data sheet for acceptable self-adhered flashing products.

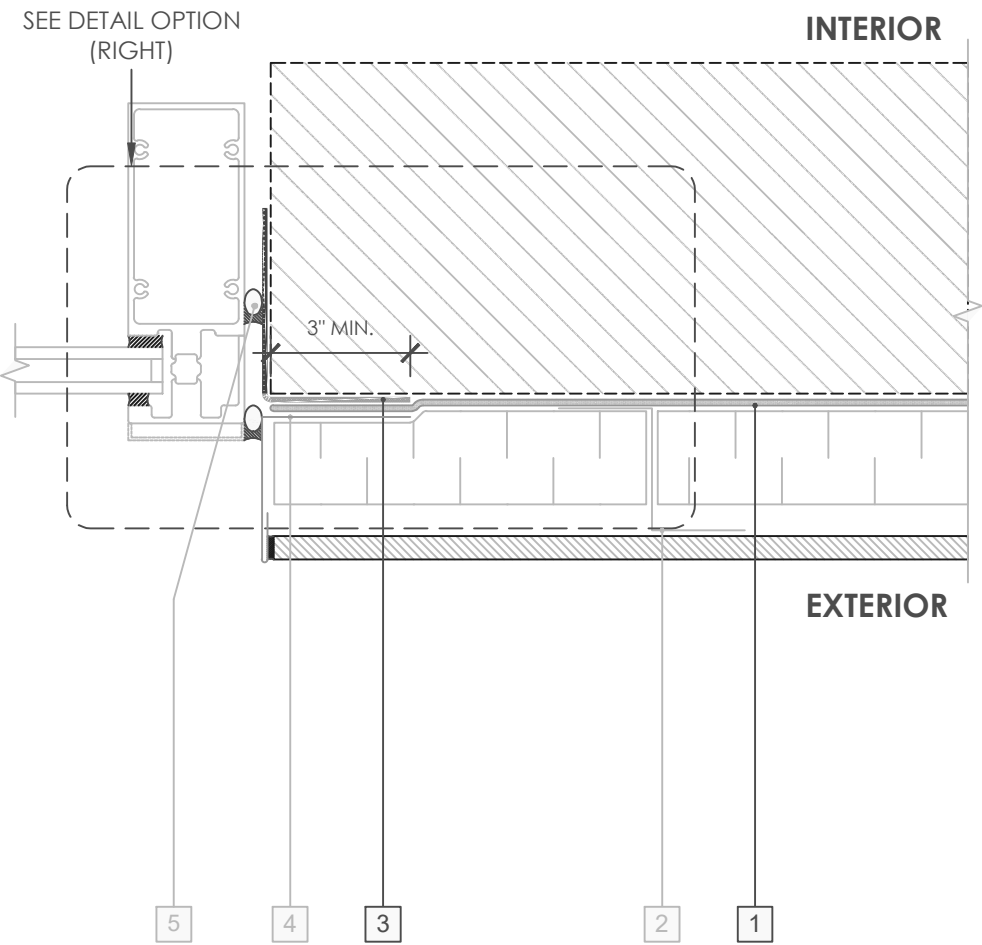


CURTAINWALL HEAD DETAIL -
NON-MASONRY CLADDING

PERM-A-BARRIER® VPL 50RS UV STABLE

| | |
|-----------------|-----------------|
| DRAWING: | VPL 50RS UV-020 |
| SCALE: | 3" = 1' |
| EFFECTIVE DATE: | 2023.04.10 |
| SUPERCEDES: | NEW |

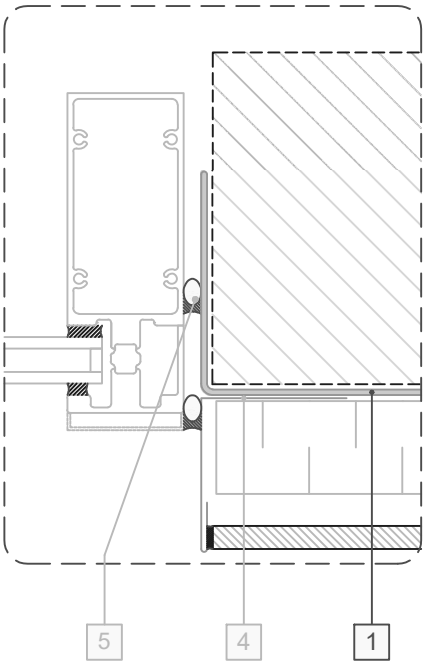
OPTION 1



LEGEND

1. **PERM-A-BARRIER® VPL 50RS UV STABLE MEMBRANE**
2. CLADDING ATTACHMENT, CONFIRM DETAILING REQUIREMENTS WITH THE GCPAT REPRESENTATIVE
3. **PERM-A-BARRIER® UNIVERSAL FLASHING ***
4. SHEET METAL FLASHING PER ARCH
5. INTERIOR AIR SEALANT OVER BACKER ROD

OPTION 2



GENERAL NOTES

1. Detail not suitable for all climates. Avoiding excessive moisture accumulation in exterior walls is dependent on many factors including proper placement of insulation and water, air, and vapor control layers in the wall. Confirm membranes are suitable for project specific service temperatures. For assistance with exterior wall design, consult with a building science professional.
2. Install all GCP products in accordance with GCP Product Data Sheets and GCP recommendations.
3. GCP products are indicated in the detail legend in **BOLDFACE** font. Detail components by others are indicated in GRAY FONT. Install components per manufacturer and project specific requirements.

*Refer to air barrier system product data sheet for acceptable self-adhered flashing products.

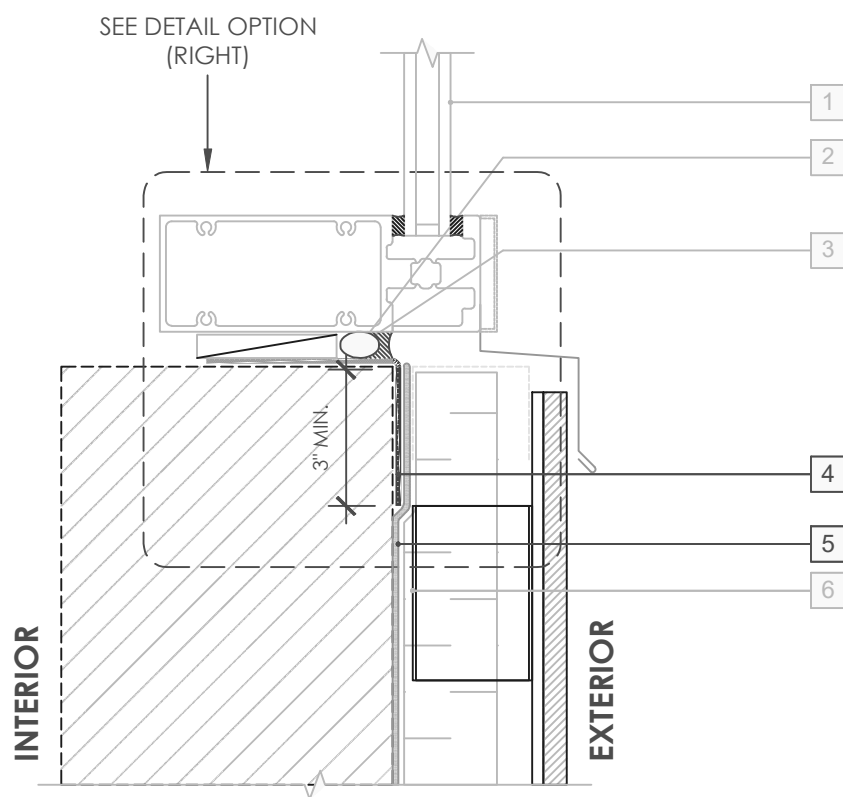


WINDOW JAMB DETAIL -
NON-MASONRY CLADDING

PERM-A-BARRIER® VPL 50RS UV STABLE

| | |
|-----------------|-----------------|
| DRAWING: | VPL 50RS UV-021 |
| SCALE: | 3" = 1' |
| EFFECTIVE DATE: | 2023.04.10 |
| SUPERCEDES: | NEW |

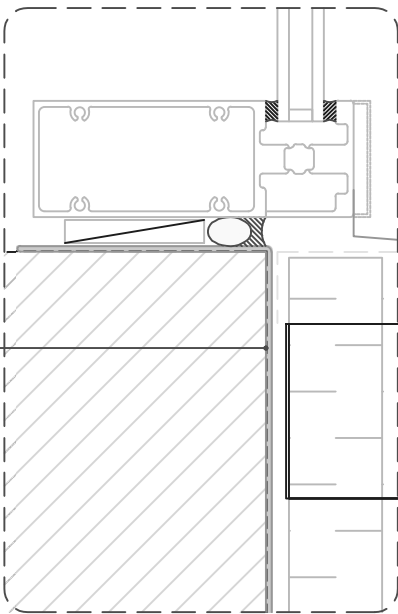
OPTION 1



LEGEND

- 1. CURTAINWALL SILL OVER STARTER TRACK
INTERIOR AIR SEALANT OVER BACKER ROD
- 2. SHEET METAL FLASHING
SANDWICHED BETWEEN 1/4" SHIMS
- 3. **PERM-A-BARRIER® UNIVERSAL FLASHING ***
- 4. **PERM-A-BARRIER® VPL 50RS UV STABLE MEMBRANE**
- 5. CLADDING ATTACHMENT, CONFIRM
DETAILING REQUIREMENTS WITH THE
GCPAT REPRESENTATIVE


OPTION 2



GENERAL NOTES

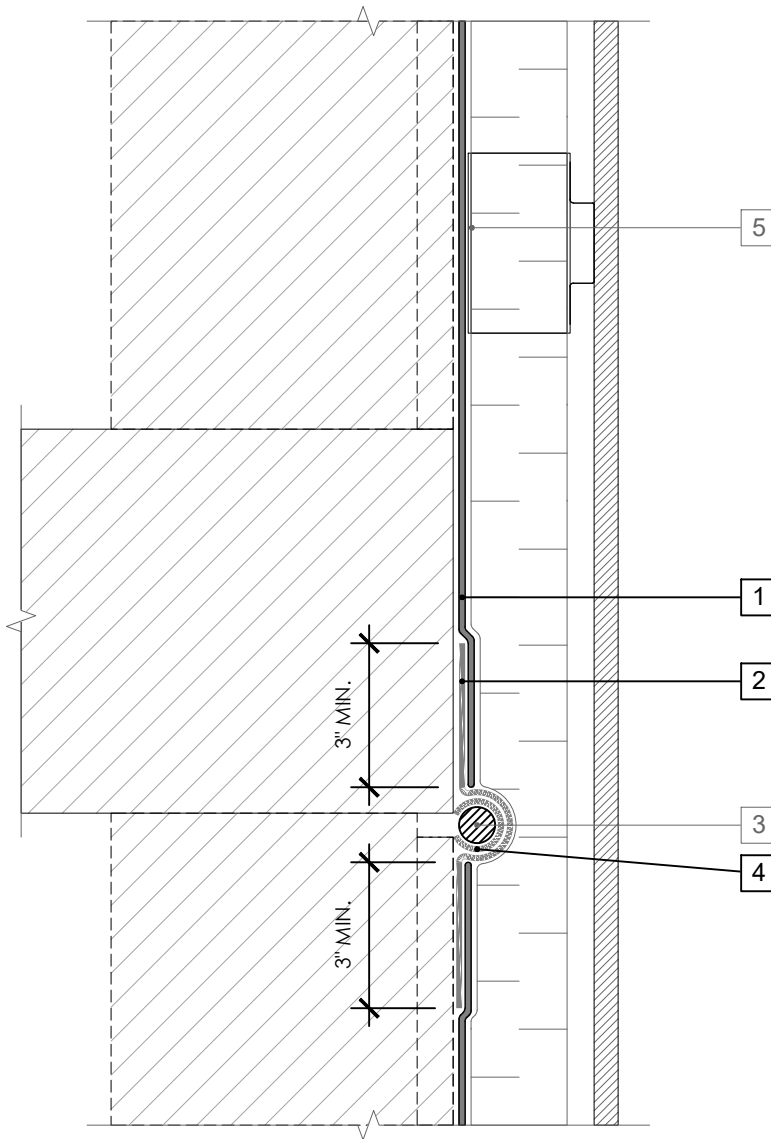
- 1. Detail not suitable for all climates. Avoiding excessive moisture accumulation in exterior walls is dependent on many factors including proper placement of insulation and water, air, and vapor control layers in the wall. Confirm membranes are suitable for project specific service temperatures. For assistance with exterior wall design, consult with a building science professional.
- 2. Install all GCP products in accordance with GCP Product Data Sheets and GCP recommendations.
- 3. GCP products are indicated in the detail legend in **BOLDFACE** font. Detail components by others are indicated in GRAY FONT. Install components per manufacturer and project specific requirements.

*Refer to air barrier system product data sheet for acceptable self-adhered flashing products.

| | | | |
|--|---|-----------------|-----------------|
|  | CURTAINWALL SILL DETAIL - NON-MASONRY CLADDING | DRAWING: | VPL 50RS UV-022 |
| | | SCALE: | 3" = 1' |
| | PERM-A-BARRIER® VPL 50RS UV STABLE | EFFECTIVE DATE: | 2023.04.10 |
| | | SUPERCEDES: | NEW |

LEGEND

1. **PERM-A-BARRIER® VPL 50RS MEMBRANE**
2. **PERM-A-BARRIER® SELF-ADHERED FLASHING***
3. MINIMUM 3/4" BACKER ROD
4. **PERM-A-BARRIER DETAIL MEMBRANE INVERTED STRIP SUFFICIENT IN SIZE TO COVER BACKER ROD**
5. CLADDING ATTACHMENT, CONFIRM DETAILING REQUIREMENTS WITH THE GCPAT REPRESENTATIVE



GENERAL NOTES

1. Detail not suitable for all climates. Avoiding excessive moisture accumulation in exterior walls is dependent on many factors including proper placement of insulation and water, air, and vapor control layers in the wall. Confirm membranes are suitable for project specific service temperatures. For assistance with exterior wall design, consult with a building science professional.
2. Install all GCP products in accordance with GCP Product Data Sheets and GCP recommendations.
3. GCP products are indicated in the detail legend in **BOLDFACE** font. Detail components by others are indicated in **GRAY FONT**. Install components per manufacturer and project specific requirements.

*Refer to air barrier system product data sheet for acceptable self-adhered flashing products.



DEFLECTION JOINT

PERM-A-BARRIER® VPL 50RS UV Stable

DRAWING: VPL50RS-023

SCALE: 3" = 1'

EFFECTIVE DATE: 2020.05.21

SUPERCEDES: NEW