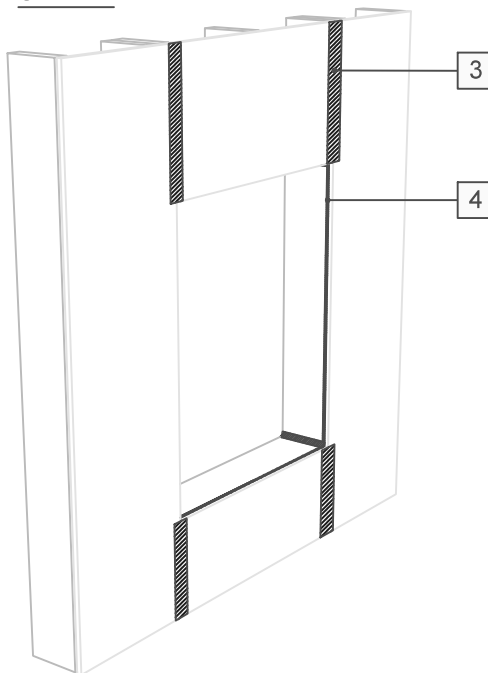


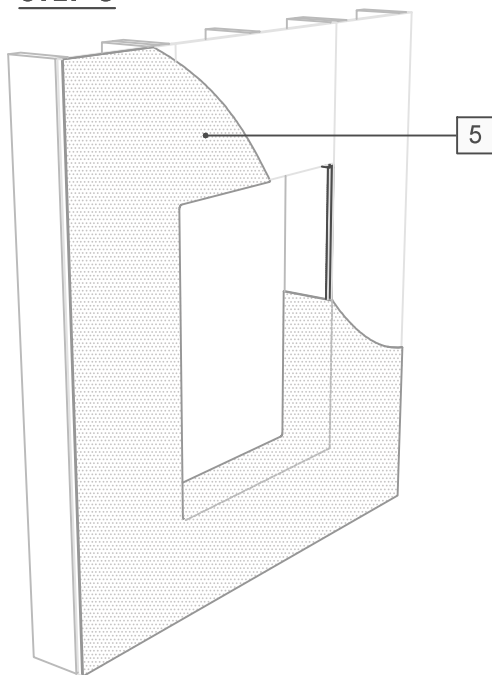
## STEP 1



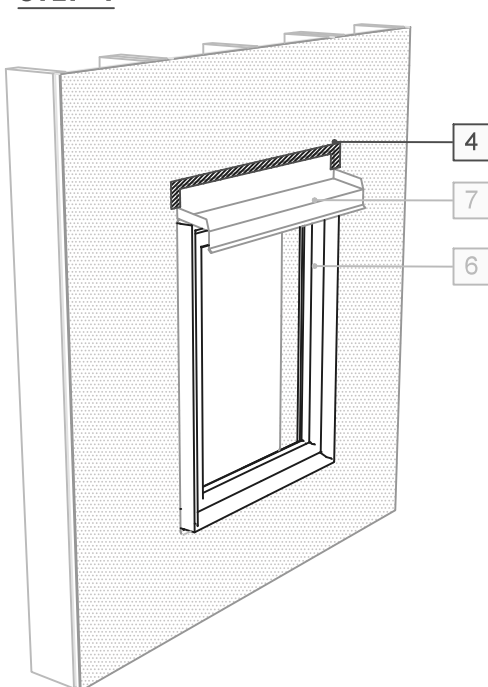
## STEP 2



## STEP 3



## STEP 4



## LEGEND

1. SHEATHING SUBSTRATE
2. **PERM-A-BARRIER®** PRIMER AT ALL EXPOSED GYPSUM SHEATHING EDGES
3. JOINT TREATMENT PER DETAIL VPL50RS-009B
4. **PERM-A-BARRIER®** S100 SEALANT OR **PERM-A-BARRIER®** LIQUID FLASHING AT ALL TRANSITIONS BETWEEN FRAMING AND SHEATHING
5. **PERM-A-BARRIER®** VPL 50RS UV STABLE MEMBRANE
6. WINDOW PER ARCH
7. SHEET METAL HEAD FLASHING PER ARCH.

## NOTE

- CONTINUOUS AIR AND WATER SEAL AT PERIMETER OF FENESTRATION, FENESTRATION ATTACHMENT, AND DRAINAGE OF ROUGH OPENING TO BE PER PROJECT SPECIFIC REQUIREMENTS

## GENERAL NOTES

1. Detail not suitable for all climates. Avoiding excessive moisture accumulation in exterior walls is dependent on many factors including proper placement of insulation and water, air, and vapor control layers in the wall. Confirm membranes are suitable for project specific service temperatures. For assistance with exterior wall design, consult with a building science professional.
2. Install all GCP products in accordance with GCP Product Data Sheets and GCP recommendations.
3. GCP products are indicated in the detail legend in **BOLDFACE** font. Detail components by others are indicated in GRAY FONT. Install components per manufacturer and project specific requirements.

\*Refer to air barrier system product data sheet for acceptable self-adhered flashing products.



## WINDOW FLASHING SEQUENCE - LIQUID-APPLIED FLASHING

**PERM-A-BARRIER®** VPL 50RS

DRAWING: VPL50RS-003 (3D-3)

SCALE: 3" = 1'

EFFECTIVE DATE: 2020.05.21

SUPERCEDES: VPL50-006-C