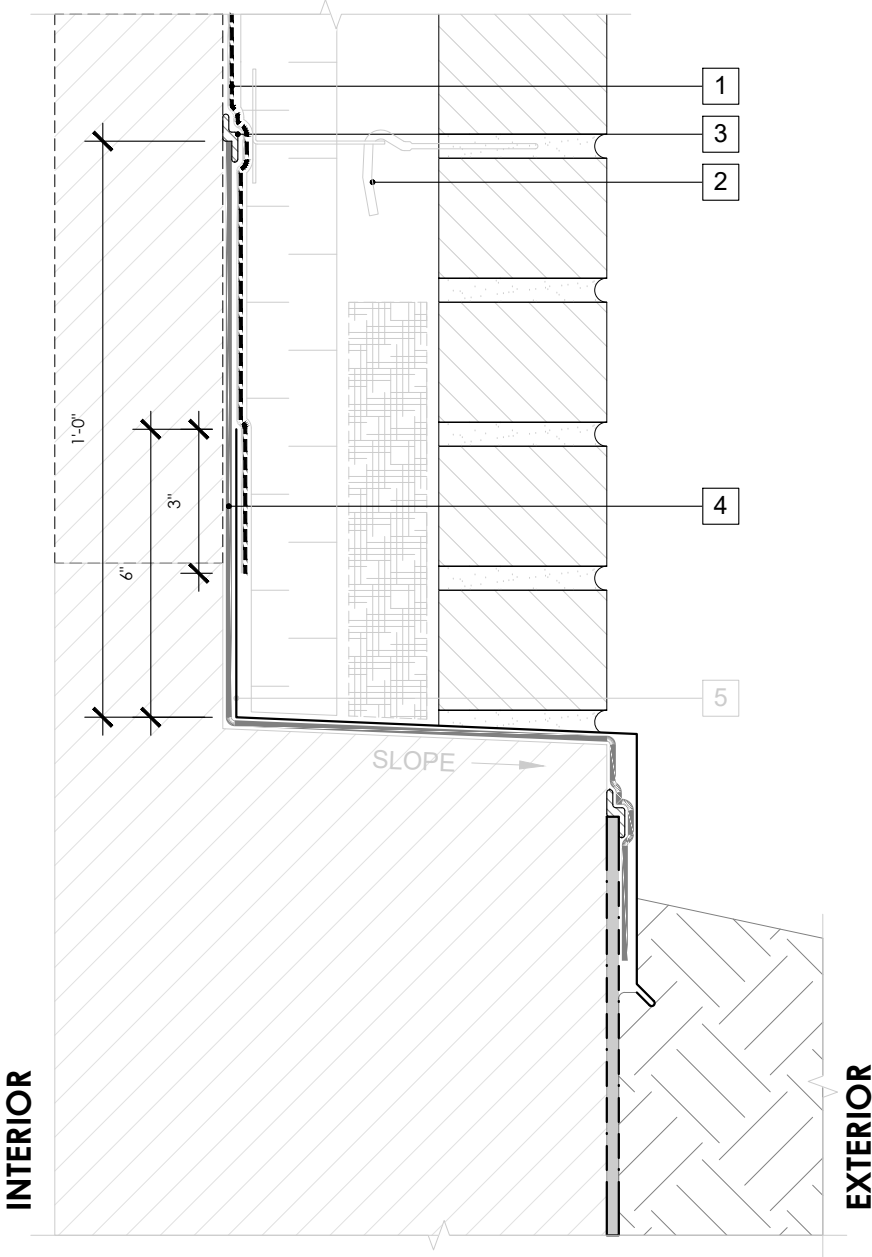


**LEGEND**

- 1. PERM-A-BARRIER® VPS 30 MEMBRANE
- 2. MASONRY ANCHOR DETAILING (SEE DRAWING VPS30-006)
- 3. BITUTHENE MASTIC, BITUTHENE LIQUID MEMBRANE, OR GCP APPROVED SEALANT, 1-INCH TROWELED BEAD
- 4. PERM-A-BARRIER® WALL FLASHING
- 5. SHEET METAL FLASHING PER ARCH

**NOTE**

- CONSULT GCP FOR BELOW GRADE WATERPROOFING COMPATIBILITY AND CONNECTION



**GENERAL NOTES**

- 1. Detail not suitable for all climates. Avoiding excessive moisture accumulation in exterior walls is dependent on many factors including proper placement of insulation and water, air, and vapor control layers in the wall. Confirm membranes are suitable for project specific service temperatures. For assistance with exterior wall design, consult with a building science professional.
- 2. Install all GCP products in accordance with GCP Product Data Sheets and GCP recommendations.
- 3. GCP products are indicated in the detail legend in **BOLDFACE** font. Detail components by others are indicated in GRAY FONT. Install components per manufacturer and project specific requirements.

\*Refer to air barrier system product data sheet for acceptable SELF-ADHERED FLASHING\* products.



**BASE OF WALL DETAIL (ALTERNATE 2) - MASONRY CLADDING**

PERM-A-BARRIER® VPS 30

DRAWING:	VPS30-004 (ALT 2)
SCALE:	3" = 1'
EFFECTIVE DATE:	2020.05.21
SUPERCEDES:	NEW