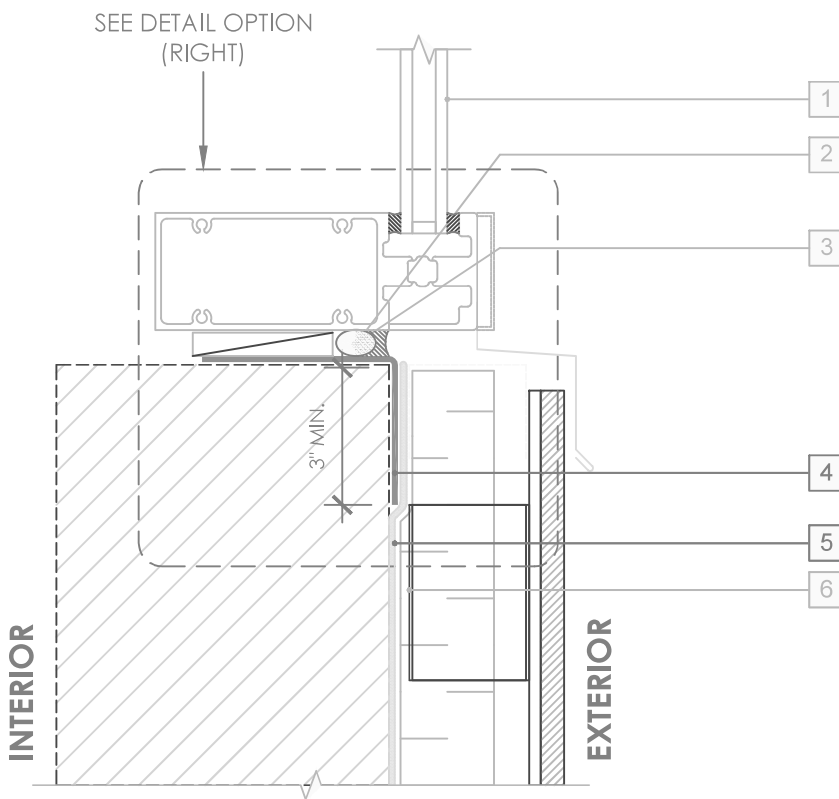


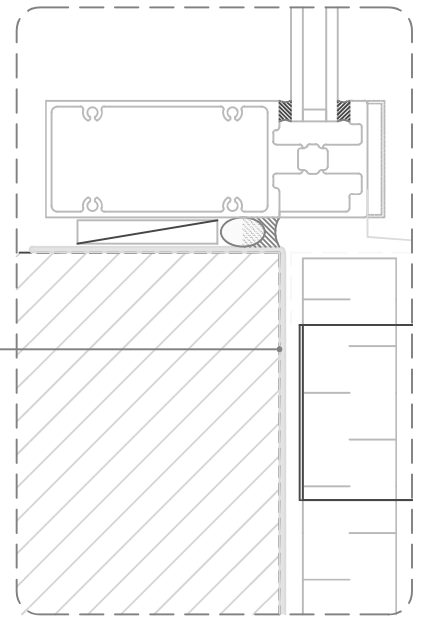
OPTION 1



LEGEND

1. CURTAINWALL SILL OVER STARTER TRACK INTERIOR AIR SEALANT OVER BACKER ROD
2. SHEET METAL FLASHING SANDWICHED BETWEEN 1/4" SHIMS
- 3. PERM-A-BARRIER® UNIVERSAL FLASHING & SEALANT***
- 4. PERM-A-BARRIER® VPL 50RS UV STABLE MEMBRANE**
5. CLADDING ATTACHMENT, CONFIRM DETAILING REQUIREMENTS WITH THE GCPAT REPRESENTATIVE

OPTION 2



GENERAL NOTES

1. Detail not suitable for all climates. Avoiding excessive moisture accumulation in exterior walls is dependent on many factors including proper placement of insulation and water, air, and vapor control layers in the wall. Confirm membranes are suitable for project specific service temperatures. For assistance with exterior wall design, consult with a building science professional.
2. Install all GCP products in accordance with GCP Product Data Sheets and GCP recommendations.
3. GCP products are indicated in the detail legend in **BOLDFACE** font. Detail components by others are indicated in GRAY FONT. Install components per manufacturer and project specific requirements.

*Refer to air barrier system product data sheet for acceptable self-adhered flashing products.



CURTAINWALL SILL DETAIL - NON-MASONRY CLADDING

PERM-A-BARRIER® VPL 50RS UV STABLE

DRAWING: VPL 50RS UV-022

SCALE: 3" = 1'

EFFECTIVE DATE: 2023.09.12

SUPERCEDES: NEW