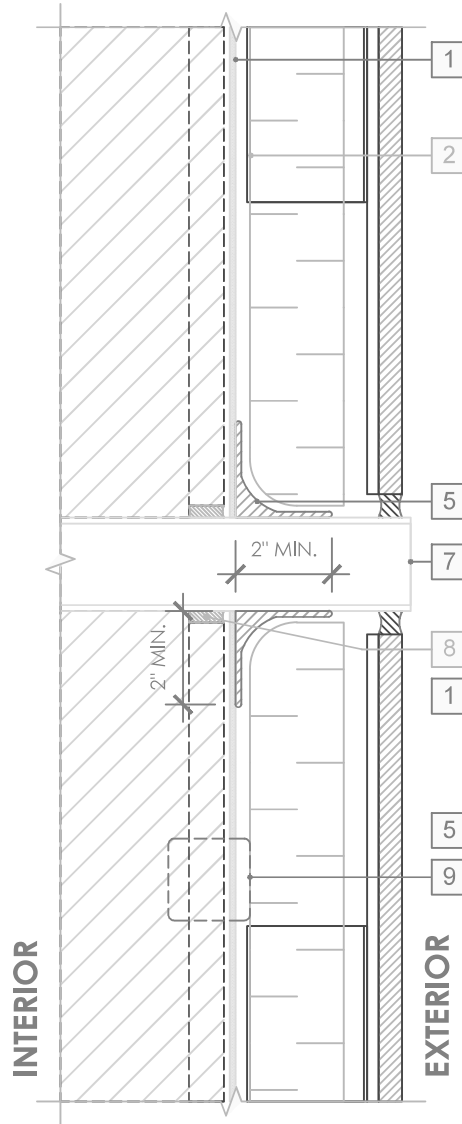
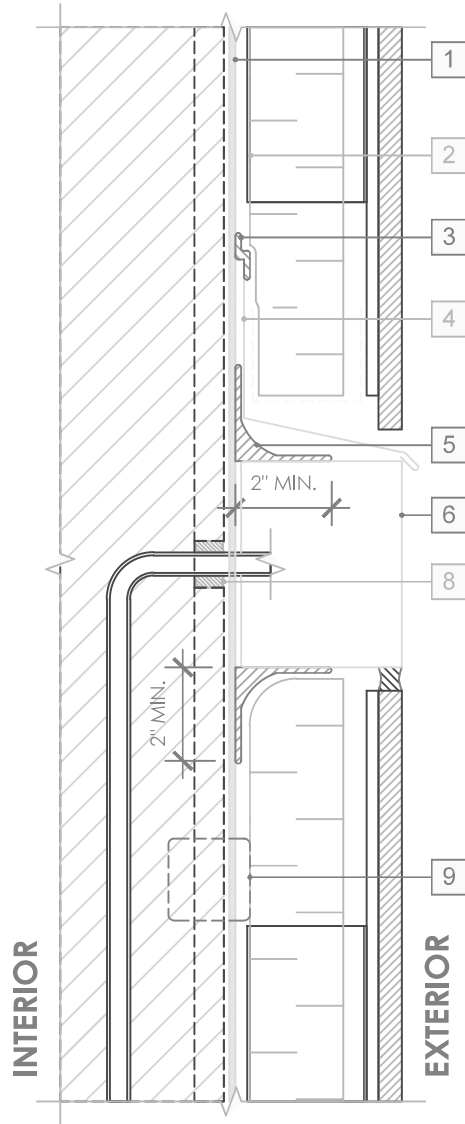


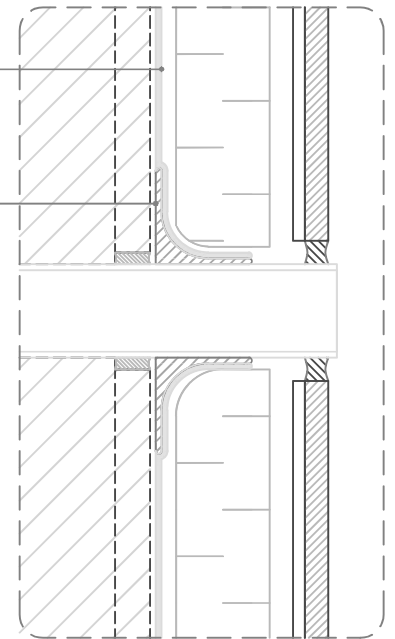
OPTION 1



LEGEND

1. **PERM-A-BARRIER® VPL 50RS UV STABLE MEMBRANE**
2. CLADDING ATTACHMENT, CONFIRM DETAILING REQUIREMENTS WITH THE GCPAT REPRESENTATIVE
3. **PERM-A-BARRIER® UNIVERSAL FLASHING & SEALANT - 1-INCH WIDE, TOOLED BEAD**
4. SHEET METAL FLASHING PER ARCH
5. **PERM-A-BARRIER® UNIVERSAL FLASHING & SEALANT AND CANT SEAL**
6. AIR AND WATER TIGHT BOX AND PENETRATION
7. AIR AND WATER TIGHT PIPE PENETRATION
8. GCP APPROVED SEALANT OR NON-SHRINK GROUT PER BACKUP WALL TYPE
9. JOINT TREATMENT PER DETAIL ISO 009-B

OPTION 2



GENERAL NOTES

1. Detail not suitable for all climates. Avoiding excessive moisture accumulation in exterior walls is dependent on many factors including proper placement of insulation and water, air, and vapor control layers in the wall. Confirm membranes are suitable for project specific service temperatures. For assistance with exterior wall design, consult with a building science professional.
2. Install all GCP products in accordance with GCP Product Data Sheets and GCP recommendations.
3. GCP products are indicated in the detail legend in **BOLDFACE** font. Detail components by others are indicated in GRAY FONT. Install components per manufacturer and project specific requirements.

*Refer to air barrier system product data sheet for acceptable self-adhered flashing products.



PENETRATION DETAILS - NON-MASONRY CLADDING

PERM-A-BARRIER® VPL 50RS UV STABLE

DRAWING: VPL 50RS UV-019

SCALE: 3" = 1'

EFFECTIVE DATE: 2023.09.12

SUPERCEDES: VPL50-019