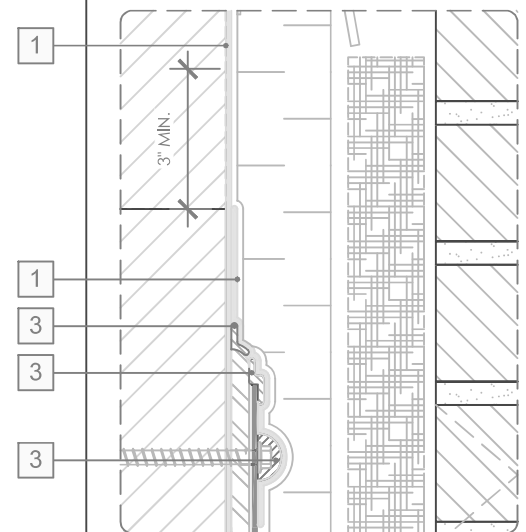


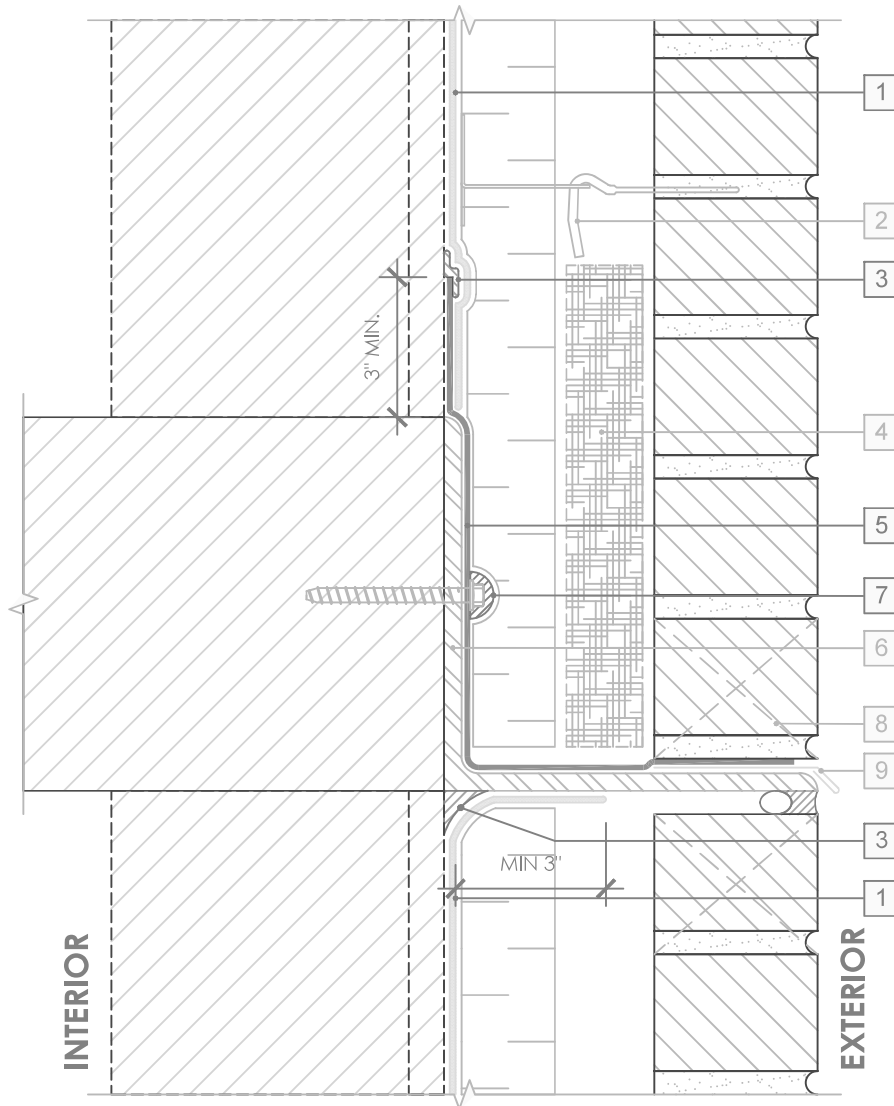
LEGEND

1. **PERM-A-BARRIER® VPL 50RS UV STABLE MEMBRANE**
2. **MASONRY ANCHOR DETAILING (SEE DRAWING VPL50RS-006)**
3. **PERM-A-BARRIER® UNIVERSAL SEALANT & FLASHING - 1-INCH WIDE, TOOLED BEAD**
4. MORTAR COLLECTION MESH
5. **PERM-A-BARRIER® ULTRA (STAR CUT AT BOLT) - PRIME SUBSTRATE WHERE REQUIRED**
6. CONTINUOUS SHELF ANGLE SUPPORT PER STRUCTURAL
7. **PERM-A-BARRIER® UNIVERSAL SEALANT & FLASHING AROUND FASTENER**
8. MASONRY WEEP/VENT
9. SHEET METAL FLASHING PER ARCH
10. **PERM-A-BARRIER® UNIVERSAL SEALANT & FLASHING**

OPTION 2



SEE VPL50RS-005 (3D-2) FOR 3D DETAIL



GENERAL NOTES

1. Detail not suitable for all climates. Avoiding excessive moisture accumulation in exterior walls is dependent on many factors including proper placement of insulation and water, air, and vapor control layers in the wall. Confirm membranes are suitable for project specific service temperatures. For assistance with exterior wall design, consult with a building science professional.
2. Install all GCP products in accordance with GCP Product Data Sheets and GCP recommendations.
3. GCP products are indicated in the detail legend in **BOLDFACE** font. Detail components by others are indicated in GRAY FONT. Install components per manufacturer and project specific requirements.

*Refer to air barrier system product data sheet for acceptable self-adhered flashing products.

FLOOR LINE DETAIL - MASONRY CLADDING

PERM-A-BARRIER® VPL 50RS UV STABLE

DRAWING: VPL 50 RS UV 005

SCALE: 3" = 1'

EFFECTIVE DATE: 2023.09.12

SUPERCEDES: VPL50-005

