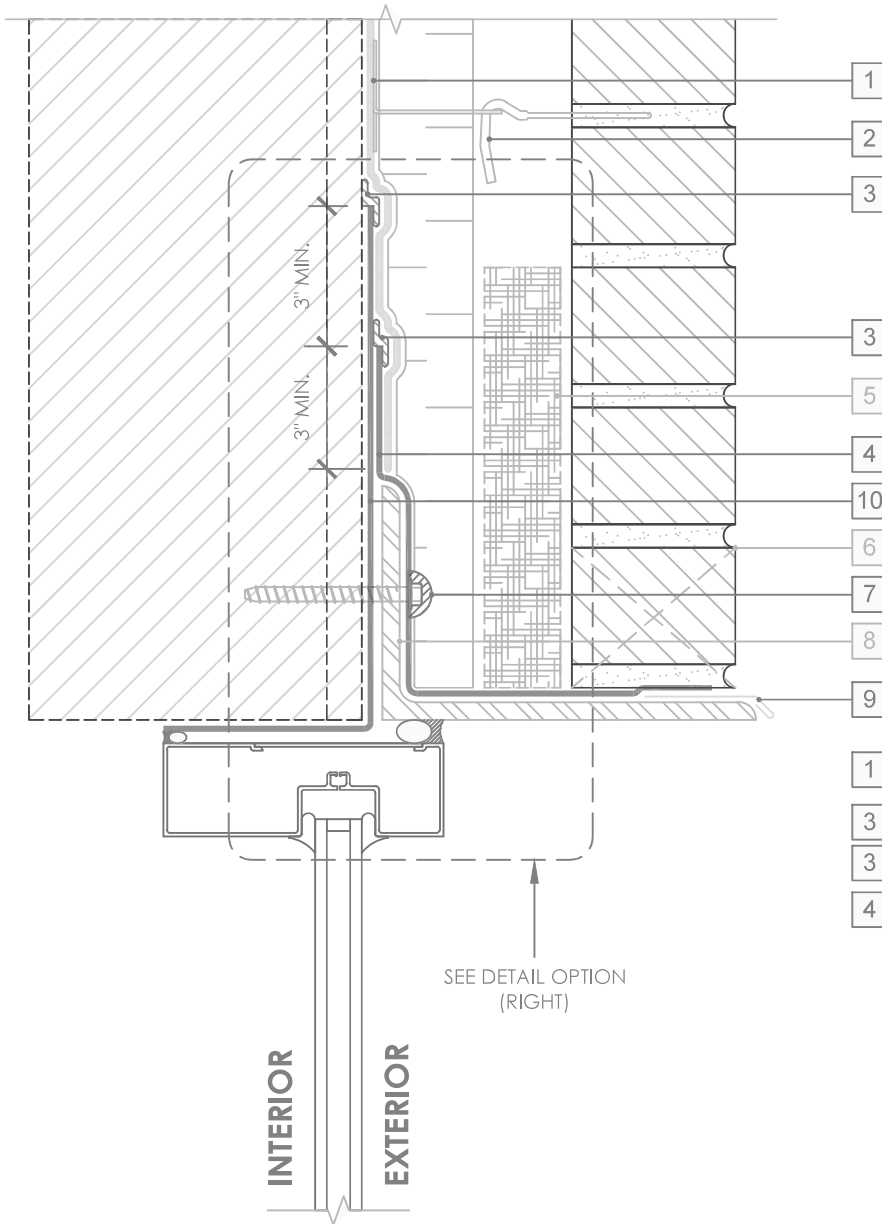


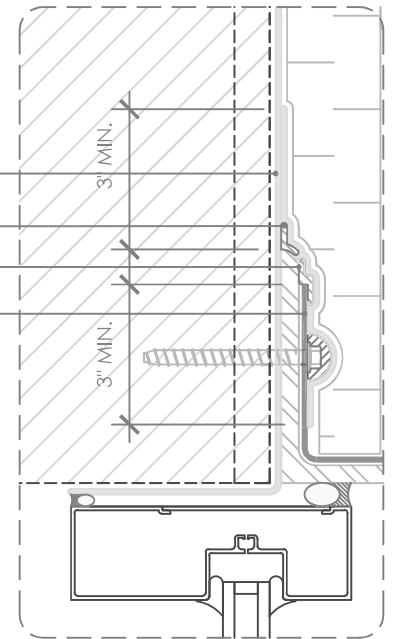
OPTION 1



LEGEND

1. **PERM-A-BARRIER® VPL 50RS UV STABLE MEMBRANE**
2. **MASONRY ANCHOR DETAILING (SEE DRAWING VPL 50RS UV STABLE-006)**
3. **PERM-A-BARRIER® UNIVERSAL FLASHING & SEALANT - 1-INCH WIDE, TOOLED BEAD**
4. **PERM-A-BARRIER® ULTRA (STAR CUT AT BOLT), PRIME SUBSTRATE WHERE REQUIRED**
5. MORTAR COLLECTION MESH
6. MASONRY WEEP/VENT
7. **PERM-A-BARRIER® UNIVERSAL FLASHING AROUND FASTENER**
8. CONTINUOUS SHELF ANGLE SUPPORT PER STRUCTURAL
9. SHEET METAL FLASHING PER ARCH
10. **PERM-A-BARRIER® ULTRA***

OPTION 2



GENERAL NOTES

1. Detail not suitable for all climates. Avoiding excessive moisture accumulation in exterior walls is dependent on many factors including proper placement of insulation and water, air, and vapor control layers in the wall. Confirm membranes are suitable for project specific service temperatures. For assistance with exterior wall design, consult with a building science professional.
2. Install all GCP products in accordance with GCP Product Data Sheets and GCP recommendations.
3. GCP products are indicated in the detail legend in **BOLDFACE** font. Detail components by others are indicated in GRAY FONT. Install components per manufacturer and project specific requirements.

*Refer to air barrier system product data sheet for acceptable self-adhered flashing products.



WINDOW HEAD DETAIL - MASONRY CLADDING

PERM-A-BARRIER® VPL 50RS-UV

DRAWING: VPL 50RS-UV-002

SCALE: 3" = 1'

EFFECTIVE DATE: 2023.09.08

SUPERCEDES: NEW