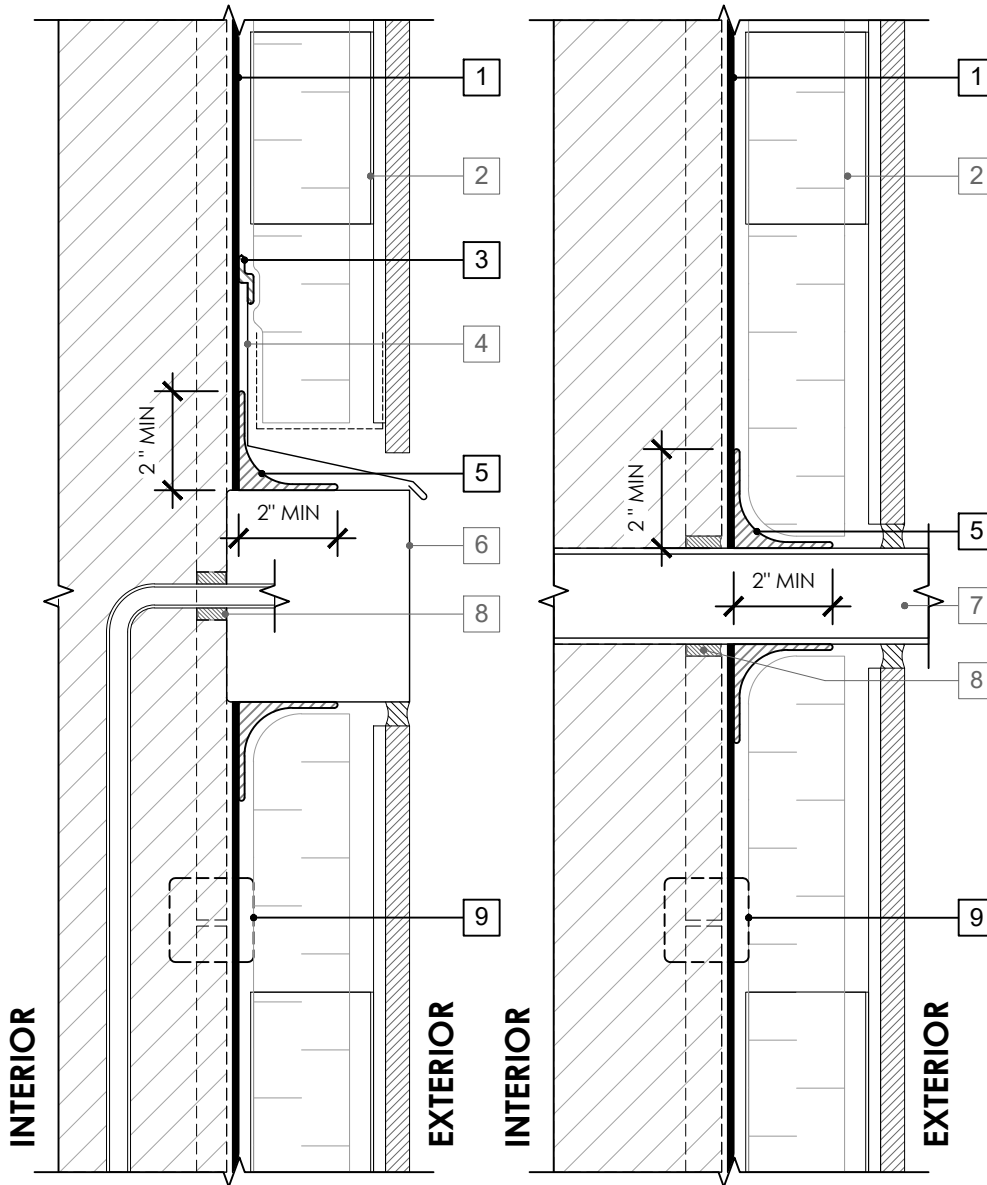


LEGEND

1. PERM-A-BARRIER® LIQUID
2. CLADDING ATTACHMENT - CONFIRM DETAILING REQUIREMENTS WITH THE GCPAT REPRESENTATIVE
3. PERM-A-BARRIER® S100 SEALANT - 1-INCH WIDE TROWELED BEAD
4. SHEET METAL FLASHING PER ARCH
5. PERM-A-BARRIER® S100 SEALANT, FLASHING AND CANT SEAL
6. AIR AND WATER TIGHT BOX PENETRATION
7. AIR AND WATER TIGHT PIPE AND PENETRATION
8. GCP APPROVED SEALANT OR NON-SHRINK GROUT PER BACKUP WALL TYPE
9. JOINT TREATMENT PER DETAIL PLQ-009B



GENERAL NOTES

1. Detail not suitable for all climates. Avoiding excessive moisture accumulation in exterior walls is dependent on many factors including proper placement of insulation and water, air, and vapor control layers in the wall. Confirm membranes are suitable for project specific service temperatures. For assistance with exterior wall design, consult with a building science professional.
2. Install all GCP products in accordance with GCP Product Data Sheets and GCP recommendations.
3. GCP products are indicated in the detail legend in **BOLDFACE** font. Detail components by others are indicated in GRAY FONT. Install components per manufacturer and project specific requirements.

*Refer to air barrier system product data sheet for acceptable self-adhered flashing products.



PENETRATION DETAILS - NON-MASONRY CLADDING

PERM-A-BARRIER® LIQUID
AIR BARRIER SYSTEM

DRAWING: PLQ-019

SCALE: 3" = 1'

EFFECTIVE DATE: 2020.05.21

SUPERCEDES: NEW