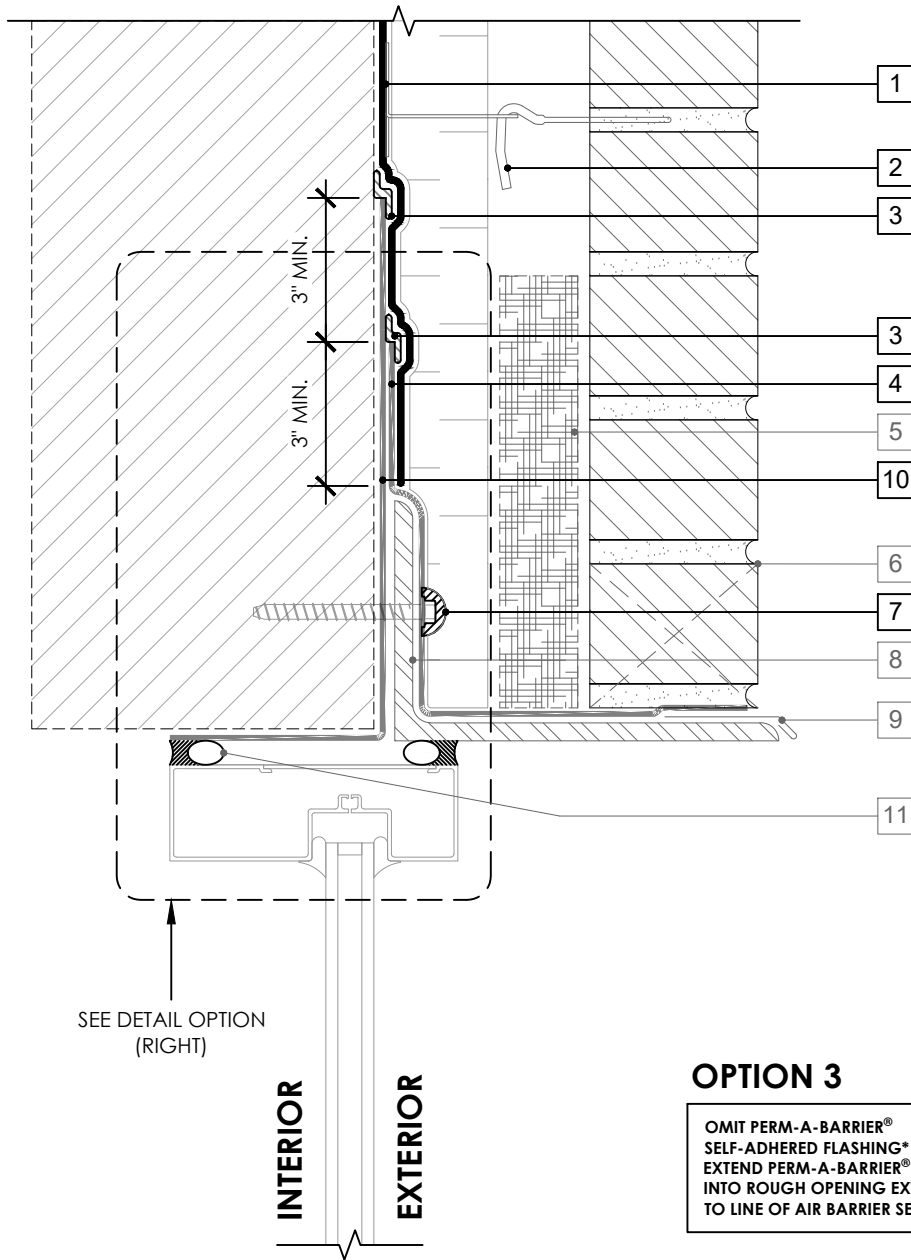


## OPTION 1



SEE DETAIL OPTION  
(RIGHT)

**INTERIOR**  
**EXTERIOR**

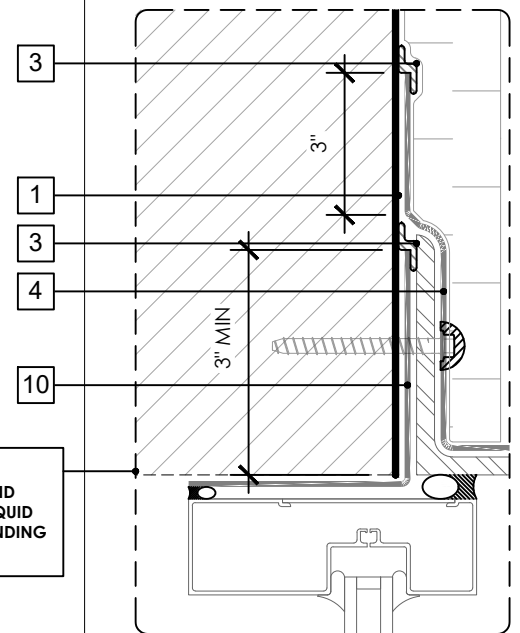
## OPTION 3

OMIT PERM-A-BARRIER®  
SELF-ADHERED FLASHING\* AND  
EXTEND PERM-A-BARRIER® LIQUID  
INTO ROUGH OPENING EXTENDING  
TO LINE OF AIR BARRIER SEAL

## LEGEND

1. PERM-A-BARRIER® LIQUID
2. MASONRY ANCHOR DETAILING (SEE DRAWING PLQ-006)
3. PERM-A-BARRIER® S100 SEALANT - 1-INCH WIDE TROWELED BEAD
4. PERM-A-BARRIER® WALL FLASHING (STAR CUT AT BOLT) - PRIME SUBSTRATE WHERE REQUIRED
5. MORTAR COLLECTION MESH
6. MASONRY WEEP/VENT
7. PERM-A-BARRIER® S100 SEALANT AROUND FASTENER
8. CONTINUOUS SHELF ANGLE SUPPORT PER STRUCTURAL
9. SHEET METAL FLASHING PER ARCH
10. PERM-A-BARRIER® SELF-ADHERED FLASHING\* - PRIME SUBSTRATE WHERE REQUIRED
11. INTERIOR AIR BARRIER SEALANT OVER BACKER ROD AT WINDOW PERIMETER

## OPTION 2



## GENERAL NOTES

1. Detail not suitable for all climates. Avoiding excessive moisture accumulation in exterior walls is dependent on many factors including proper placement of insulation and water, air, and vapor control layers in the wall. Confirm membranes are suitable for project specific service temperatures. For assistance with exterior wall design, consult with a building science professional.
2. Install all GCP products in accordance with GCP Product Data Sheets and GCP recommendations.
3. GCP products are indicated in the detail legend in **BOLDFACE** font. Detail components by others are indicated in GRAY FONT. Install components per manufacturer and project specific requirements.

\*Refer to air barrier system product data sheet for acceptable self-adhered flashing products.



## WINDOW HEAD DETAIL - MASONRY CLADDING

PERM-A-BARRIER® LIQUID  
AIR BARRIER SYSTEM

DRAWING: PLQ-001

SCALE: 3" = 1'

EFFECTIVE DATE: 2020.05.21

SUPERCEDES: NEW