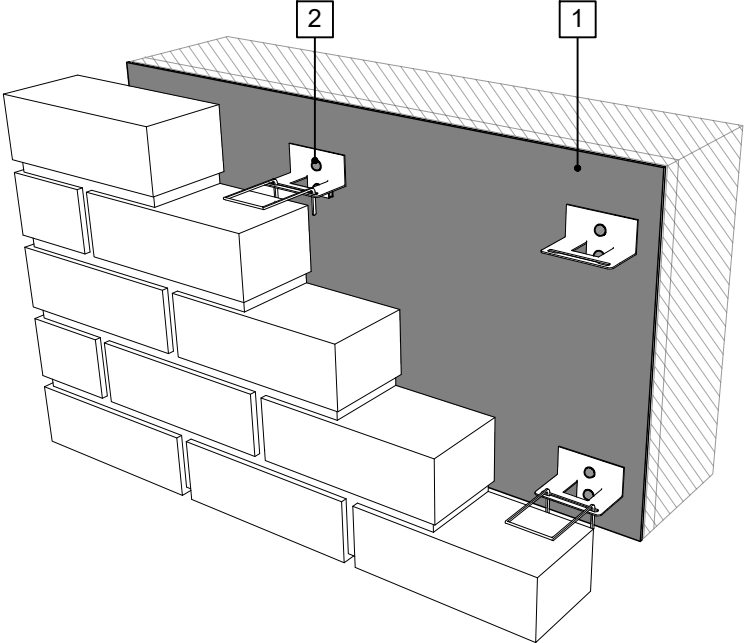
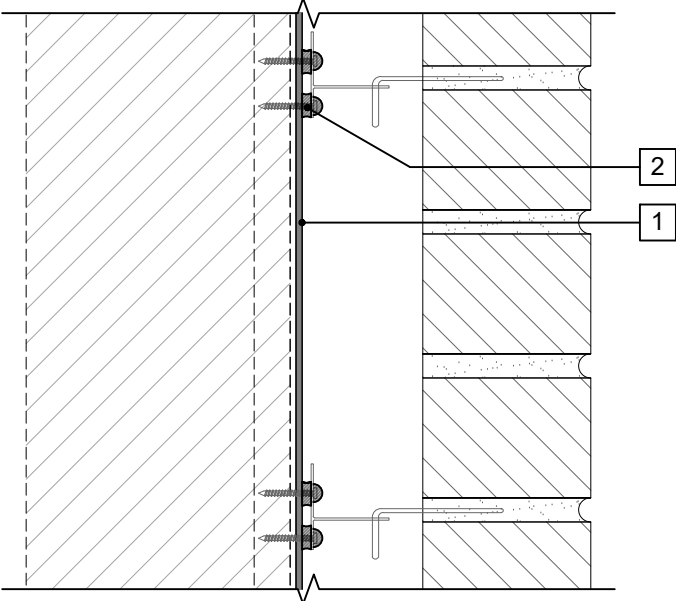


LEGEND

- 1. PERM-A-BARRIER® NPL 10
- 2. PERM-A-BARRIER® S100 SEALANT AROUND FASTENER AT FRONT AND BACK FACE OF MASONRY ANCHOR

SECTION VIEW



GENERAL NOTES

- 1. Detail not suitable for all climates. Avoiding excessive moisture accumulation in exterior walls is dependent on many factors including proper placement of insulation and water, air, and vapor control layers in the wall. Confirm membranes are suitable for project specific service temperatures. For assistance with exterior wall design, consult with a building science professional.
- 2. Install all GCP products in accordance with GCP Product Data Sheets and GCP recommendations.
- 3. GCP products are indicated in the detail legend in **BOLDFACE** font. Detail components by others are indicated in GRAY FONT. Install components per manufacturer and project specific requirements.

*Refer to air barrier system product data sheet for acceptable self-adhered flashing products.



**MASONRY ANCHOR DETAILING -
FRAMED SUBSTRATE**

**PERM-A-BARRIER® NPL AIR
BARRIER SYSTEM**

DRAWING:	NPL-006B
SCALE:	3" = 1'
EFFECTIVE DATE:	2020.05.21
SUPERCEDES:	NEW