



BXUV.N777

Design/System/Construction/Assembly Usage Disclaimer

- Authorities Having Jurisdiction should be consulted in all cases as to the particular requirements covering the installation and use of UL Certified products, equipment, system, devices, and materials.
- Authorities Having Jurisdiction should be consulted before construction.
- Fire resistance assemblies and products are developed by the design submitter and have been investigated by UL for compliance with applicable requirements. The published information cannot always address every construction nuance encountered in the field.
- When field issues arise, it is recommended the first contact for assistance be the technical service staff provided by the product manufacturer noted for the design. Users of fire resistance assemblies are advised to consult the general Guide Information for each product category and each group of assemblies. The Guide Information includes specifics concerning alternate materials and alternate methods of construction.
- Only products which bear UL's Mark are considered Certified.

BXUV - Fire Resistance Ratings - ANSI/UL 263 Certified for United States

BXUV7 - Fire Resistance Ratings - CAN/ULC-S101 Certified for Canada

See General Information for Fire-resistance Ratings - ANSI/UL 263 Certified for United States Design Criteria and Allowable Variances

See General Information for Fire Resistance Ratings - CAN/ULC-S101 Certified for Canada Design Criteria and Allowable Variances

Design No. N777

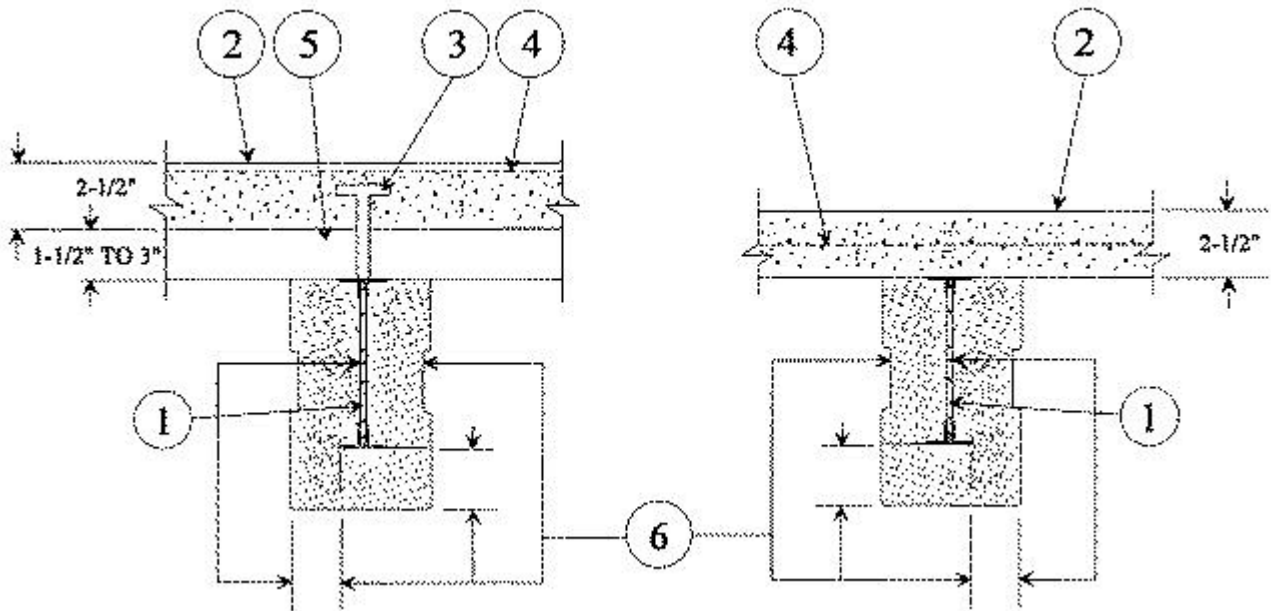
February 05, 2014

Restrained Beam Ratings — 1, 1-1/2, 2 or 3 Hr (See Items 6& 7)

Unrestrained Beam Ratings — 1, 1-1/2, 2 or 3 Hr (See Items 6 & 7)

This design was evaluated using a load design method other than the Limit States Design Method (e.g., Working Stress Design Method). For jurisdictions employing the Limit States Design Method, such as Canada, a load restriction factor shall be used — See Guide BXUV or BXUV7

*** Indicates such products shall bear the UL or cUL Certification Mark for jurisdictions employing the UL or cUL Certification (such as Canada), respectively.**



1. **Steel Joist** — Composite or non-composite min 10K1, min 10 in. deep, welded or bolted to end supports. May be uncoated or provided with a shop coat of paint. Designed per S.J.I specifications for a max tensile stress of 30,000 psi. Top chords shall consist of two angles measuring 1-1/4 by 1-1/4 by 0.135 in. thick, min. Bottom chords shall consist of two angles measuring 1 by 1 by 0.115 in. thick, min. The first diagonal web member at each end shall consist of a min 0.595 in. diam round bar. All remaining web members shall consist of 0.50 in. diam round bars, min. Bridging per S.J.I specifications when non-composite joists are used.

2. **Normal Weight or Lightweight Concrete** — Min compressive strength of 3000 psi. For normal weight concrete, either carbonate or siliceous aggregate may be used. Unit weight, 145 +/- 3 pcf. For lightweight concrete, unit weight may range from 104 to 120 pcf.

3. **Shear Connector** — (Optional) — Studs, min 1/2 in. diam headed type or equivalent per A.I.S.C. specifications. Welded to the top chord of joist through the steel floor units. Stud welding, as recommended by the stud manufacturer, should be followed.

4. **Welded Wire Fabric** — Min 6x6-W1.4xW1.4.

5. **Steel Floor and Form Units** — 1-1/2 to 3 in. deep fluted or cellular units, welded to joist.

6. **Spray-Applied Fire Resistive Materials*** — Applied by mixing and spraying in more than one coat to joist surfaces which must be clean and free of dirt, loose scale and oil. When fluted steel floor units are used, crest areas shall be filled with Spray-Applied Fire Resistive Materials above the joist. Thickness of protection on bridging bars or bridging angles same as on joist chords or webs. Min avg and min ind density of 15/14 pcf respectively. For method of density determination, refer to Design Information Section.

**Spray Applied Fire Resistive Mtl
Thkns In. For Joist Spaced**

Restrained Beam Rating Hr	Unrestrained Beam Rating Hr	More Than 4 Ft OC	4 Ft or Less OC
1	1	7/8	7/8
1-1/2	1	1-3/16	1-3/16
1-1/2	1-1/2	1-5/16	1-5/16
2	1	1-7/8	1-7/8
2	2	2-3/16	1-7/8

3	3	3-1/2	2-13/16
---	---	-------	---------

ARABIAN VERMICULITE INDUSTRIES — Types MK-6/HY, MK-6/HY Extended Set, MK-10 HB, MK-10 HB Extended Set, MK-6/HB, MK-6s, MK-6 GF, MK-6 GF Extended Set, MK-1000/HB, MK-1000/HB Extended Set.

GCP KOREA INC — Types MK-6/HY, MK-6/HY Extended Set, MK-10 HB, MK-10 HB Extended Set, MK-6/HB, MK-6s, MK-6 GF, MK-6 GF Extended Set, MK-1000/HB, MK-1000/HB Extended Set.

GCP APPLIED TECHNOLOGIES INC — Types MK-6/HY, MK-6/HY Extended Set, MK-10 HB, MK-10 HB Extended Set, MK-6/HB, MK-6s, MK-6 GF, MK-6 GF Extended Set, RG, MK-1000/HB, MK-1000/HB Extended Set.

6A. Alternate Spray-Applied Fire Resistive Materials* — Applied by mixing with water and spraying in one or more coats to a final thickness as shown in the tables below to steel beam surfaces which must be clean and free of dirt, loose scale and oil. When fluted steel floor units are used, crest areas shall be filled with Spray-Applied Fire Resistive Materials above the joist. Min avg and min ind density of 22/19 pcf, respectively. Min avg and min individual density of 40/36 pcf respectively for Types Z-146, Z-146T, and Z-146PC. Min avg and min ind density of 50/45 pcf respectively for Types Z-156, Z-156T, and Z-156PC. For method of density determination, refer to Design Information Section.

**Spray Applied Fire Resistive Mtl
Thkns In. For Joist Spaced**

Restrained Beam Rating Hr	Unrestrained Beam Rating Hr	More Than 4 Ft OC	4 Ft or Less OC
1	1	7/8	7/8
1-1/2	1	1-3/16	1-3/16
1-1/2	1-1/2	1-5/16	1-5/16
2	1	1-7/8	1-7/8
2	2	2-3/16	1-7/8
3	3	3-1/2	2-13/16

ARABIAN VERMICULITE INDUSTRIES — Types Z-106, Z-106/G, Z-106/HY, Types Z-146, Z-146T, Z-146PC, Z-156, Z-156T, Z-156PC investigated for exterior use.

GCP KOREA INC — Types Z-106, Z-106/G, Z-106/HY, Types Z-146, Z-146T, Z-146PC, Z-156, Z-156T, Z-156PC investigated for exterior use.

GCP APPLIED TECHNOLOGIES INC — Types Z-106, Z-106/G, Z-106/HY, Types Z-146, Z-146T, Z-146PC, Z-156, Z-156T, Z-156PC investigated for exterior use.

7. Metal Lath — (Not Shown) — (Required on both sides of joists with Z-146, Z-146T, Z-146PC, Z-156, Z-156T and Z-156PC, otherwise optional) — Metal lath may be used to facilitate the spray application of spray-applied resistive material on steel bar joists and trusses. The diamond mesh, 3/8 in. expanded steel lath, 1.7 to 3.4 lb/sq yd is secured to one side of each steel joist with No. 18 SWG galv steel wire at joist web and bottom chord members, spaced 15 in. O.C. max. When used, the metal lath is to be fully covered with spray-applied resistive material with no min thickness requirements for material applied onto the lath between chords and between web members.

7A. Non-Metallic Fabric Mesh — (Optional) — As an alternate to metal lath, glass fiber fabric mesh, weighing approximately 2.5 oz/sq yd, polypropylene fabric mesh, weighing approximately 1.25 oz/sq yd or equivalent, may be used to facilitate the

spray application. The mesh is secured to one side of each joist web member. The method of attaching the mesh must be sufficient to hold the mesh and the spray-applied resistive material in place during application until it has cured. An acceptable method to attach the mesh is by embedding the mesh in min 1/4 in. long beads of hot melted glue. The beads of glue shall be spaced a max of 12 in. O.C. along the top chord of the bar joist. Another method to secure the mesh is by 1-1/4 in. long by 1/2 in. wide hairpin clips formed from No. 18 SWG or heavier steel wire.

*** Indicates such products shall bear the UL or cUL Certification Mark for jurisdictions employing the UL or cUL Certification (such as Canada), respectively.**

Last Updated on 2014-02-05

The appearance of a company's name or product in this database does not in itself assure that products so identified have been manufactured under UL's Follow-Up Service. Only those products bearing the UL Mark should be considered to be Certified and covered under UL's Follow-Up Service. Always look for the Mark on the product.

UL permits the reproduction of the material contained in the Online Certification Directory subject to the following conditions: 1. The Guide Information, Assemblies, Constructions, Designs, Systems, and/or Certifications (files) must be presented in their entirety and in a non-misleading manner, without any manipulation of the data (or drawings). 2. The statement "Reprinted from the Online Certifications Directory with permission from UL" must appear adjacent to the extracted material. In addition, the reprinted material must include a copyright notice in the following format: "© 2020 UL LLC"