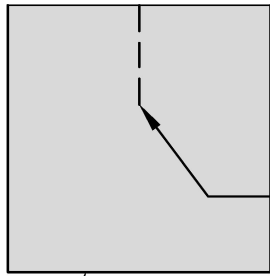
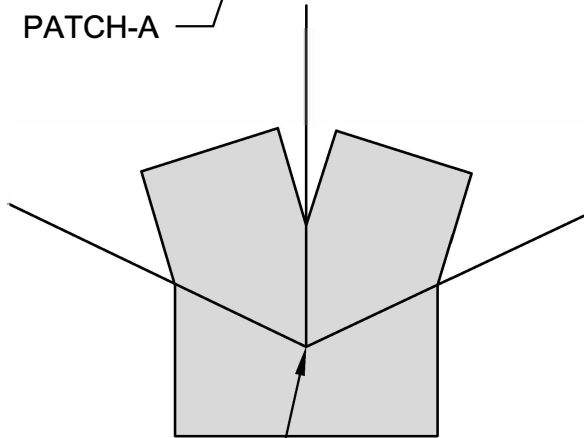


OPTION - A



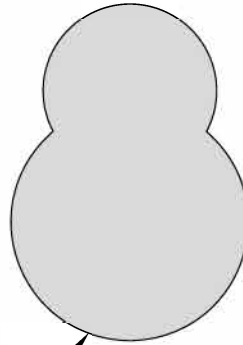
RELIEF CUT

PATCH-A

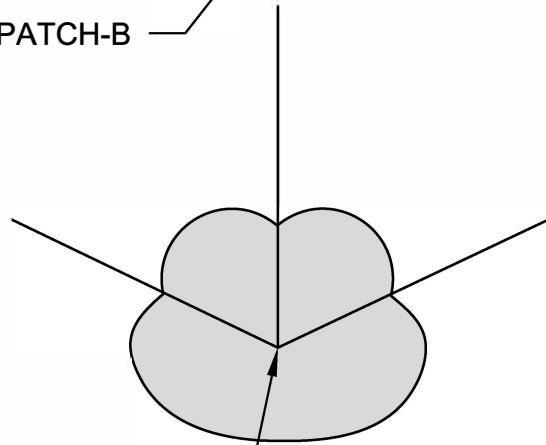


PATCH-A
INSTALLED AT CORNER

OPTION - B

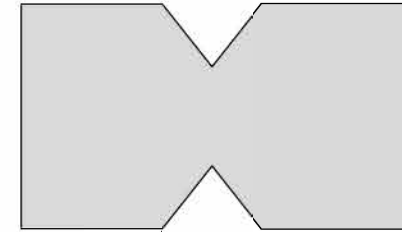


PATCH-B

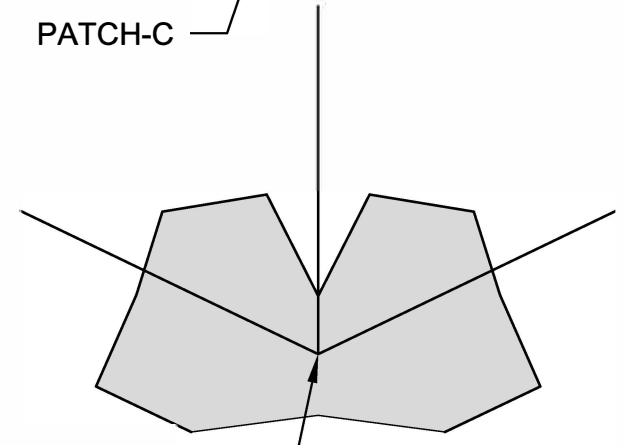


PATCH-B
INSTALLED AT CORNER

OPTION - C



PATCH-C



PATCH-C
INSTALLED AT CORNER

NOTES:

- A. VISIT GCPAT.COM FOR THE MOST CURRENT DETAILS AND INSTALLATION VIDEO
- B. REFER TO PRODUCT DATA SHEETS ON WEB SITE FOR FURTHER INFORMATION
- C. REMOVE RELEASE PAPER AT TIME OF INSTALLATION OF CORNER PATCH
- D. NOMINAL PATCH SIZE IS 6" x 6"
- E. FOR SEVERE WEATHER CLIMATES, PATCH SIZE IS 12" x 12" MINIMUM



CORNER DETAILING PATCH OPTIONS

GRACE ICE & WATER SHIELD®

Drawing: IWSDET-111

Scale: Not to Scale

Effective Date: 01/22/18

Supersedes: 05/16/06